
User's Guide

O&O BlueCon XXL Administrator's Suite

Designed for Windows NT 4, Windows 2000, and Windows XP



O&O Software GmbH

O&O BlueCon – User's Guide
Rev# 2003-02-2

©2002-02 O&O Software GmbH • Am Borsigturm 48 • 13507 Berlin • Germany
<http://www.oo-software.com>

Text, illustrations, and examples have been produced with great care. The publisher is neither legally nor in any other way liable for incorrect information given and its possible consequences.

This document is protected by copyright. All rights reserved. Without written approval from the publisher, no part of this document may be reproduced through photocopying, microfilming or any other procedure, nor may it be translated into a language used by machines, especially data-processing equipment. Rights are likewise reserved for quotation in lectures, on radio and television.

Microsoft Windows, Windows NT, Windows 2000, and Windows XP are registered trademarks of Microsoft Corporation, Redmond, USA. O&O and the O&O-logo are registered trademarks of the O&O Software GmbH, Berlin.

Contents

Introduction	1
Welcome to O&O BlueCon XXL Administrator's Suite!.....	1
Upgrading to O&O BlueCon Full Version.....	3
Installation and Registration	5
Overview	5
System requirements	5
Installing O&O BlueCon	5
Registering O&O BlueCon	6
Unregistered Trial Version Dialog	7
Registration Dialog.....	7
Finishing Registration.....	8
Uninstalling O&O BlueCon.....	8
Concepts	11
O&O BlueCon	11
Boot Process.....	12
Accessing Multiple Boot Systems	12
Password Recovery and Security	13
Using O&O BlueCon	15
Console Interface.....	15
O&O BlueCon Control Applet.....	16
Settings	16
Backup	17
Autoexec	18
Backup and Restore of System Configuration	19
Batch Processing	20
Editing the Registry	20
Device and Service Configuration.....	21
Delete data permanently and securely.....	21
Restore deleted data.....	22
Booting O&O BlueCon from Disk	22
Creating Bootable Disks	23
O&O BootWizard.....	23
Select Boot Device.....	23
Select Source Folder.....	24
Select Target Folder.....	25

Select Options (Windows NT 4 only)	26
Choose Driver Support.....	26
Additional Tools.....	27
Locating Service Pack (Windows NT 4 only)	27
Password Protection	28
Copy Setup Files.....	29
Finished.....	30
Recording the CD-R from an ISO-Image	30

O&O BlueCon Commands 31

Command Index.....	31
attrib	31
backup.....	31
bgcolor	32
cd	33
chkdsk	33
cls.....	33
convert	33
copy.....	34
del	34
deltree	34
device.....	35
dir	35
edlin.....	36
exit.....	36
fgcolor	36
format.....	37
ftdisk	37
help	38
info	38
keyb.....	38
mkdir	38
passwd.....	39
radd.....	39
rcd	39
rdel	40
rdeltree	40
rdir	40
reboot.....	41
redit	41
regedit	41
rename	41
restore	42
rexit	42
rhelp	42
rmdir	43
rtype	43
safeerase	43
scopy.....	45
service.....	45
type	45
unerase	46

user	48
ver	48
vmap	49
xcopy	49
Support	51
Online Resources	51
Technical Support	51
Software License Agreement	53
License Agreement for O&O BlueCon XXL Administrator's Suite (EULA)	53

Introduction

Welcome to O&O BlueCon XXL Administrator's Suite!

Thank you for choosing O&O BlueCon XXL! Allow us to introduce this new version of our software, which enables you to restore, rescue and secure data from your NT 4, Windows 2000 und Windows XP systems.

With this program, you can carry out administrative changes to Windows and gain access to your data even during the system start-up. In this way you can restore defective systems, save valuable data and restore accidentally deleted files. For the first time, you can also safely and permanently delete entire partitions and hard disk volumes. O&O BlueCon XXL helps you to save essential time and money!

The new version is even easier and more comfortable to use than its predecessors. See for yourself how easy it is to configure O&O BlueCon XXL and create boot disks to save systems that won't boot anymore! Just a few clicks of the mouse and you have everything you need. Here are some highlights of O&O BlueCon XXL Administrator's Suite:

- **Restore deleted data** - O&O BlueCon XXL enables you to rescue important files and data that have been deleted from the hard disk by accident, by a virus, or by defective software. With your O&O BlueCon boot data carrier you can start up your PC, search the hard disk and restore the data without the risk of overwriting it at any point.
- **Delete data securely and permanently** - O&O BlueCon XXL facilitates a genuinely secure and permanent erasure of files, folders, entire partitions or whole volumes - all with scientifically recognized methods.
- **Restore passwords** - O&O BlueCon XXL is a powerful tool for the resetting or changing of local users' passwords, giving you back access to your PC.
- **Easy, comfortable use of the BootWizard** - O&O BlueCon XXL and the accompanying BootWizard are even easier to use! Create your own O&O BlueCon boot data disk for Windows XP in just a few steps.
- **Start O&O BlueCon from a floppy disk/CD-rom** – One of the real bonuses of O&O BlueCon XXL is the possibility of starting a Windows PC from a floppy or CD-rom. You therefore gain access to your drives even if Windows won't start up anymore. Perhaps you just want to gain access to data on your system

without risking making any changes - this is particularly useful where damaged data systems, deleted files or defective hard disks are concerned.

- **Password protection for O&O BlueCon boot disks and CDs** – We have integrated extra protection against unauthorized use of start-up floppy disks/CD-roms into the new version: You can specify a password that must be entered when the floppy disk/CD-rom is used. In this way you ensure that only authorized users have access to the O&O BlueCon boot data carrier.

We have done our utmost to make O&O BlueCon XXL an indispensable part of your Windows tool collection. If you have any questions about our product, or require help in a particular situation, don't hesitate to contact us.

We wish you enjoyment and success with O&O BlueCon XXL and look forward to receiving your feedback!

Regards,

the O&O Software Team

<http://www.oo-software.com>

Upgrading to O&O BlueCon Full Version

Happy with the Trial Version of O&O BlueCon and want to get the full version? This full version offers you an easy and efficient way to get your systems back up and running. All commands are enabled to allow you access to volumes and systems whilst writing data.

O&O BlueCon offers the complete set of functions to easily administer your NT/2000/XP system in the Blue Screen. There are many situations in which O&O BlueCon can save the day:

- **Repair crashed NT/2000/XP-installations**
- **Rescue data from defect system**
- **Deactivate malfunctioning drivers and system services**
- **Edit the registry**
- **Edit ASCII-files like BOOT.INI**
- **Get access without administrator password**
- **Check drives**
- **Format partitions**
- **Restore deleted data**
- **Securely erase data**
- **And many more...**

Please contact our local reseller for details or purchase online from our web site <http://www.oo-software.com>

Installation and Registration

Overview

O&O BlueCon is available in two different versions: the Trial Version demonstrates the functionality of O&O BlueCon XXL and only allows read access to your partitions. In the registered version, read and write access are enabled and you can manipulate files, services, and drivers to get your system back up and running.

You can test the Trial Version of O&O BlueCon XXL absolutely for free without registering it. If you decide to purchase O&O BlueCon XXL Administrator's Suite with all features enabled, you will receive a license key to unlock the Trial Version.

If you want to remove O&O BlueCon from your computer, please follow the instructions given in the Uninstalling O&O BlueCon section.

System requirements

The requirements below list the minimal configuration. Any better hardware or newer software may be used. If you nevertheless experience problems, please do not hesitate to contact us.

Hardware

- Intel 486-processor (Pentium recommended) or similar processor
- 16 MB RAM (32 MB recommended)
- 10 MB of free disk space for installation
- CD-ROM-drive for installation (installation over a network is also possible)
- VGA graphics adapter with at least 640x480 / 16 colors
- Keyboard and mouse devices

Software

- Windows NT 4.0 Workstation or Server (SP 4 or higher), Terminal Server
- Windows 2000 Professional, Server, or Advanced Server
- Windows XP Professional or Home Edition

Installing O&O BlueCon

O&O BlueCon offers two different installation methods for administrators and users. During Setup, you will be asked to choose one of the following installations:

- **Complete**, which is recommended for administrators and includes all features of O&O BlueCon like the Control Applet and the BootWizard.
- **Backup Only**, which installs BlueCon only for backup of the system configuration. This is recommended for users who want to make backups of their registry regularly. No additional functionality like the Control Applet or the BootWizard will be installed. However, an administrator can boot O&O BlueCon from disk or CD-ROM and restore the saved system configuration. Also, upgrading with the complete installation is possible. Setup will automatically configure automatic backup at system startup. It will perform an incremental backup of the registry files. A maximum of 10 backups is kept (history). The default backup destination path is %SystemRoot%\system32\bluecon.bak. If this folder does not exist, it will be created automatically. Be sure to use this folder for the restore command.

Installing O&O BlueCon is a very easy and quick process. Please follow the steps outlined below:

- 1) Boot the computer on which you want to install O&O BlueCon.
- 2) Start Windows NT/2000/XP and log on as a local administrator or use an account with similar privileges.
- 3) Insert the CD-ROM in your CD-ROM-drive. If the AutoRun-option for CD-ROM is enabled, Setup will launch automatically. Otherwise you have to launch Setup manually:
 - a) Open the Start-menu and choose "Run..."
 - b) Enter the drive letter of your CD-ROM-drive, followed by a backslash '\' and the name of the installation program 'Setup.exe', e.g. 'D:\Setup.exe'
 - c) Press 'OK' to start the Setup.
- 4) During the initialization of the Setup program, the following error messages may occur:
 - a) **Unsupported Operating System** - O&O BlueCon may only be run on Windows NT 4, Windows 2000, or Windows XP. It cannot be used with Windows 95/98/ME or any other operating system.
 - b) **Unknown Operating System** - Setup cannot determine the type of operating system you are running. This is a serious error, which could be caused by a corrupted installation of your operating system. Please contact your system administrator and/or our support for further help.
- 5) After the successful initialization of the Setup program, please follow its instruction dialogs to complete the installation. When the Setup completes successfully, you may run O&O BlueCon as described in the section Using O&O BlueCon.

Registering O&O BlueCon

After installation has been completed, the new O&O Registration Wizard will be launched automatically. All you need is the registration code you received when you purchased the product. This registration code is also referred to as the Serial Number.

You can either register right after the installation or afterwards at any time when launching O&O BootWizard or opening the Control Panel Applet.

Unregistered Trial Version Dialog

The unregistered trial version dialog is always displayed if:

- you are using the unregistered trial version,
- you have entered a wrong registration code; please check your code and retry to register the product.

You can choose to **enter the registration code** and unlock the trial to become a full version. Or you **continue with the unregistered trial version** and can enter the code the next time you start O&O BlueCon. If you decide to purchase this product, just select **Buy now** and you will be redirected to our website, where you can get more information on how to purchase our products.

After selecting one of the options, please press 'Next' to proceed. You can abort the Registration Wizard at any time by pressing 'Cancel'.

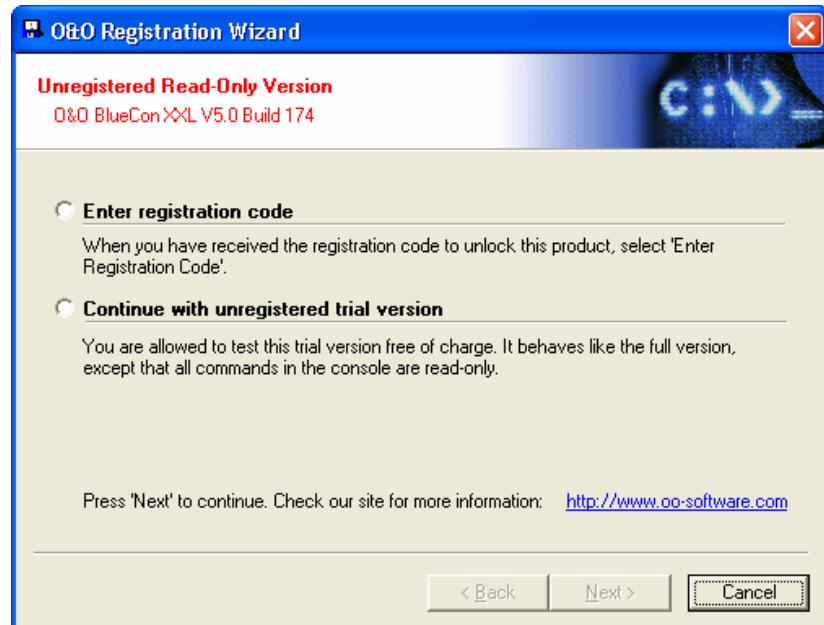


Figure 1 Unregistered Trial Version Dialog

Registration Dialog

In the registration dialog, you can enter the registration code provided to you when you purchased O&O BlueCon.

Enter your name, the name of your company and your Serial Number. Enter it exactly as stated on your license document or in your license mail! Please ensure you did not mix Os and zeros, also check that you do not enter spaces.

Press 'Next' to proceed, or 'Cancel' to dismiss the dialog without entering the information.

If you experience problems with the registration code, please contact our Technical Support.

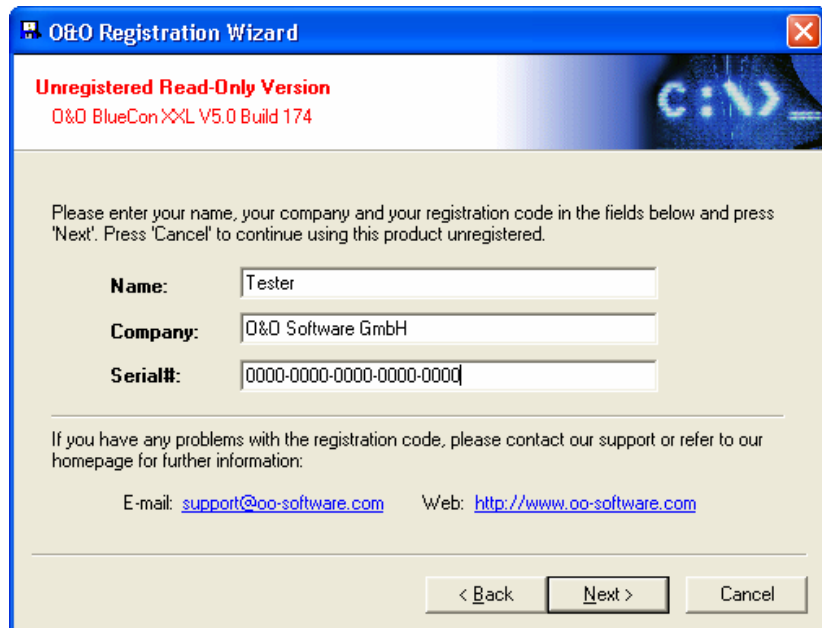


Figure 2 Registration dialog of O&O BlueCon

Finishing Registration

When you have entered the correct license code, the registration will be completed. You can now immediately register your product online and receive several benefits, e.g. technical support and discounted upgrades. See our website for more information on how to register your product!

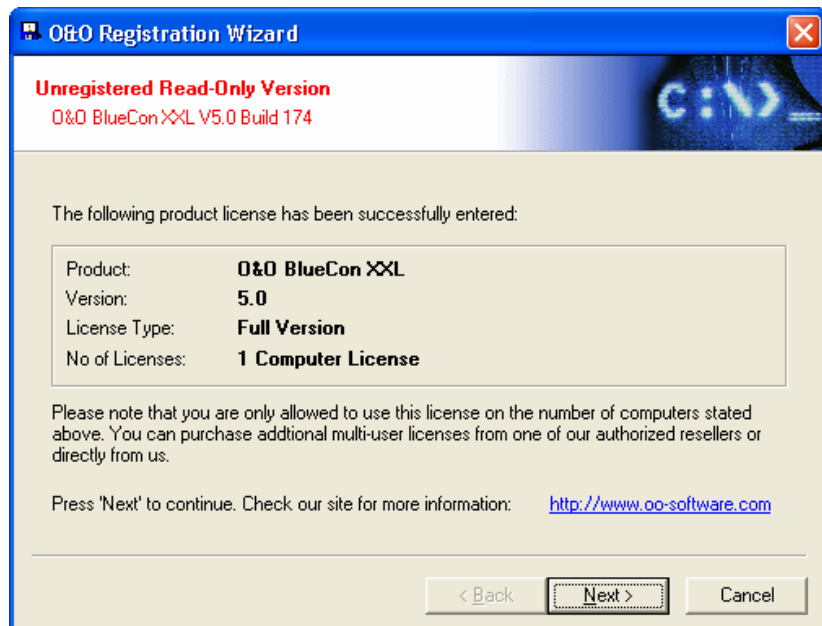


Figure 3 Finishing Registration

Uninstalling O&O BlueCon

In order to uninstall O&O BlueCon, start the Control Panel from Settings in the start menu, choose 'Add/Remove Programs', select 'O&O BlueCon' in the software list and press the 'Add/Remove...'-button.

Alternatively, you can run O&O BlueCon Setup from the O&O BlueCon program group in your start menu. If you have selected the standard installation, O&O BlueCon will be placed into a subfolder of O&O Software.

The Uninstall Wizard of InstallShield will be started. Confirm the uninstallation and proceed. No program components are being removed yet!

Select the kind of uninstallation and proceed. All program files and items will be removed from your system. If you decide not to remove O&O BlueCon, click 'Cancel'.

When finished, you will be informed about the success of the uninstallation procedure.

Concepts

O&O BlueCon

O&O BlueCon offers you a convenient way to administer your Windows NT/2000/XP in the Blue Screen. You can fix bugs during system startup or rescue data from malfunctioning hard drives. Also, you can boot NT/2000/XP from floppy disk, giving you access to systems where you have forgotten the password(s).

Every administrator's nightmare is a crash of a NT/2000/XP system. When neither a reboot nor "last known configuration" help, it is mostly too late. As Windows NT/2000/XP itself cannot be booted from disk, the usual way to restore the system used to be to create a parallel NT/2000/XP installation. Painstaking hours of setting up the machine and recovering its data can result in despair. But this is over now! O&O BlueCon not only offers a variety of specialized tools to resolve NT/2000/XP problems, it also can boot Windows NT/2000/XP from disk! Its user interface is quite similar to the well-known DOS-prompt, except that it runs in the blue screen of Windows NT/2000/XP before malfunctioning drivers, services or programs are started.

O&O BlueCon provides standard commands like DIR, COPY, DEL etc. as well as a lot of additional commands to help you restoring your Windows NT/2000/XP installation have been implemented. They give you the chance to individually activate and deactivate drivers and system services. Also, you can replace these drivers with newer versions.

Now you can restore non-functioning NT/2000/XP installations, rescue data from damaged hard disk drives, reset a forgotten administrator password and much more. A very special highlight is the ability to boot O&O BlueCon from floppy disk or CD-ROM. This enables you to access systems that have a damaged hard disk drive. Saved data will not be overwritten by a parallel NT/2000/XP installation and you can rescue your valuable data from this system. The accompanying BootWizard for O&O BlueCon leads you step by step through the creation process of boot disks or CD-ROMs and makes it as easy as creating NT/2000/XP Setup Disks.

There are many situations in which O&O BlueCon can help you. We have listed the most common to give you an overview of the power of O&O BlueCon.

- **Repair crashed Windows installations** - O&O BlueCon helps you get to the heart of the problem. Restore your configuration, even if the system crashes before you can log on. Delete malfunctioning drivers, services or programs and replace them with newer versions.

- **Rescue data from defect system** - Copy your data from a defective hard disk drive. You can access your system without the need to write to it - this ensures no data will be lost. Just boot your O&O BlueCon from floppy disk and access all your partitions!
- **Deactivate malfunctioning drivers and system services** - One of the most common reasons for system crashes are malfunctioning drivers or services. But these are loaded before the user can log on - so you do not have a chance to remove or replace them. Deactivate the driver or service by using O&O BlueCon driver and service configuration - or replace these drivers with newer versions.
- **Edit the registry** - The registry is the central storage for all system and user configuration. Errors or defects in the registry can cause your system to stop working properly. Also, wrong parameters for drivers or services can cause severe problems. A command-line-oriented registry editor included in O&O BlueCon allows you to change and to correct entries in the registry.
- **Edit ASCII-files like the BOOT.INI** - The EDLIN-tool allows you to edit ASCII-files as known from good old DOS. So you can edit all ASCII-files on your system, e.g. if you are replacing your IDE-drives with SCSI-drives, you can change BOOT.INI for correct settings of the boot path.
- **Get access without administrator password** - Without your password, you will not get access to your NT/2000/XP system. If you lose or forget it, you can only reinstall NT/2000/XP in order to gain access again. O&O BlueCon offers a tool to reset or change the password of local user accounts in order to give you access to your machine again.
- **Restore deleted data** - O&O BlueCon XXL enables you to rescue important files and data that have been deleted from the hard disk by accident, by a virus, or by defective software. With your O&O BlueCon boot data carrier, you can start up your PC, search the hard disk and restore the data without the risk of overwriting it at any point.

Boot Process

O&O BlueCon runs in the Blue Screen part of the boot process of Windows NT/2000/XP. This ensures that malfunctioning programs, drivers and services are not started yet. When O&O BlueCon is launched from hard disk, the user can decide whether he wants to launch the console mode or continue with booting NT/2000/XP. A password check prevents unauthorized users from accessing the computer. However, if you run O&O BlueCon from floppy disk, it will switch into console mode. File system drivers are loaded, enabling access to your FAT- and NTFS-partitions. An interactive user interface familiar from DOS-prompt allows you to enter commands with their arguments.

Accessing Multiple Boot Systems

Most computers have only one operating system installed. In some cases, it might be useful to have a second or more operating systems installed, e.g. when developing applications for different platforms or when using multiple applications that support only specific platforms. Systems with more than one operating system are called multiple boot systems.

O&O BlueCon can handle multiple boot systems. However, there are some points you should keep in mind when accessing a multiple boot system with O&O BlueCon.

Note: Please consider that boot managers operate with the hiding of partitions. O&O BlueCon has no or only very limited access to those partitions. Please check the appropriate type of every partition you want to access.

Installing O&O BlueCon

In order to access O&O BlueCon in the Blue Screen, it must be installed on the system. If you have multiple systems installed, you must install O&O BlueCon for each system individually.

Logon

You must log on into O&O BlueCon using the local administrator account. Keep in mind that this account and its password might be different on multiple operating systems.

Booting from Disk/CD-ROM

You can boot O&O BlueCon from floppy disk or CD-ROM. On a multiple boot system, there is more than one account database and registry. When using the `passwd`, `service` or `regedit` commands, you must specify the system on which the changes will be applied. Therefore, O&O BlueCon will list all installed operating systems and let you choose the system by entering a number.

Important note: When booting from disk, you can use the registry editor `regedit` to change registry keys and values. If you apply changes on the `SYSTEM` hive, all changes will be discarded at next reboot. However, changes to the `LOCAL_SYSTEM` hive will be stored in the registry of the selected operating system.

Using `regedit`, `service`, and `device` commands

When using `service` and `device` commands on a multiple boot system, you must select the system to apply the changes first. Once you have applied any changes to a system, you must reboot to use `regedit` on a different system. However, if you want to use `regedit` for the same system, this is still possible.

Password Recovery and Security

Windows NT/2000/XP provides several ways to ensure system security. The user has to log on before he can access system and user files, NTFS provides file security, files critical for system stability cannot be changed or deleted during run-time, e.g. registry files and the pagefile.

Logging on with O&O BlueCon

O&O BlueCon has a certain impact on system security. As it runs in the Blue Screen of Windows NT/2000, users are not usually required to log on before they can access files. However, to ensure system security, O&O BlueCon requires the built-in administrator account and password of the booted Windows NT/2000/XP configuration, if O&O BlueCon is installed on the local hard disk.

If you create a bootable floppy disk or CD-ROM, you can choose whether you want to use a password to protect it against unauthorized use. This password can be chosen independently of your Windows password. If you do not provide a password, you can gain access to the system without any further restrictions. Please note that

the password will be encrypted, so no one can read your password on the disks/CD-ROM.

Important note: Please always remember that a physically accessible system can be booted from floppy disk or CD-ROM and give unauthorized persons access to your system. Even with the normal Windows NT/2000 Setup, you can create a parallel installation and access all files on the local hard disks. If you store sensitive information on your system, we suggest using encryption software and/or hardware to restrict access.

Changing or resetting passwords

O&O BlueCon also provides the `PASSWD` command to change or to reset user passwords. The same restrictions mentioned before apply, as you have to log on to the system from a local installation or do not need any account information when booting from disk.

Changing or resetting passwords should always be the last choice of action to get access to a system. O&O BlueCon cannot crack an existing password. It only can change it to a new one or reset it to an empty password.

Using O&O BlueCon

Console Interface

O&O BlueCon behaves in much the same way as the DOS-Prompt from Windows. You can enter commands and its parameters and execute the command by hitting **Enter**. However, there is a restricted set of commands available. You can find a complete list in the section BlueCon Commands or by typing **help** at the command prompt of O&O BlueCon. Help will also display a short description of the command's function.

```
O&O BlueCon Pro U4.0 Build 436 - English keyboard
IMPORTANT: Please use the system built-in administrator account to log in.
Account: administrator
Password: ****
C:\>_
(c) 1999 - 2002 O&O Software GmbH. All rights reserved.
```

Figure 4 O&O BlueCon after it has been started

When you execute commands, the output will be printed to the Blue Screen (e.g. device).

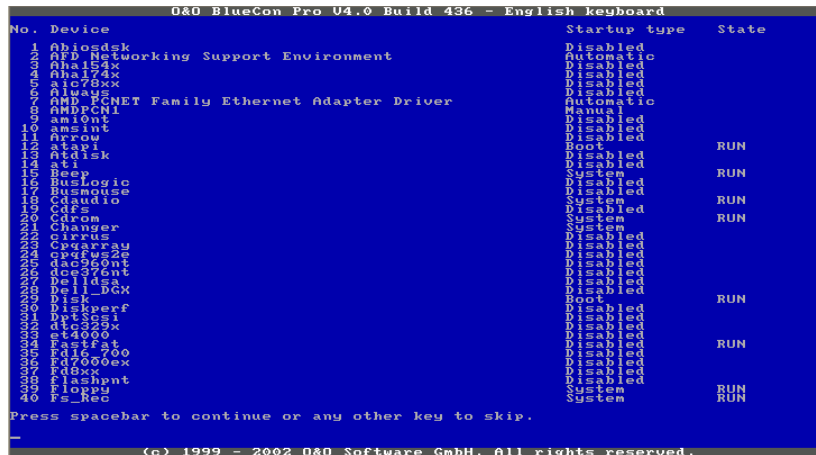


Figure 5 the device-command has stopped output and waits for the user to continue

Please note that it will automatically scroll if the end of the screen is reached. Some commands offer options to stop scrolling and continue only if you hit a key (e.g. dir /p).

O&O BlueCon Control Applet

You can change the settings of O&O BlueCon by using the corresponding Control Panel Applet. You can invoke it by choosing 'O&O BlueCon Config' from the O&O BlueCon-program group.

There are several options you can use to configure O&O BlueCon. In the following, we will provide a short description of each topic.

Settings

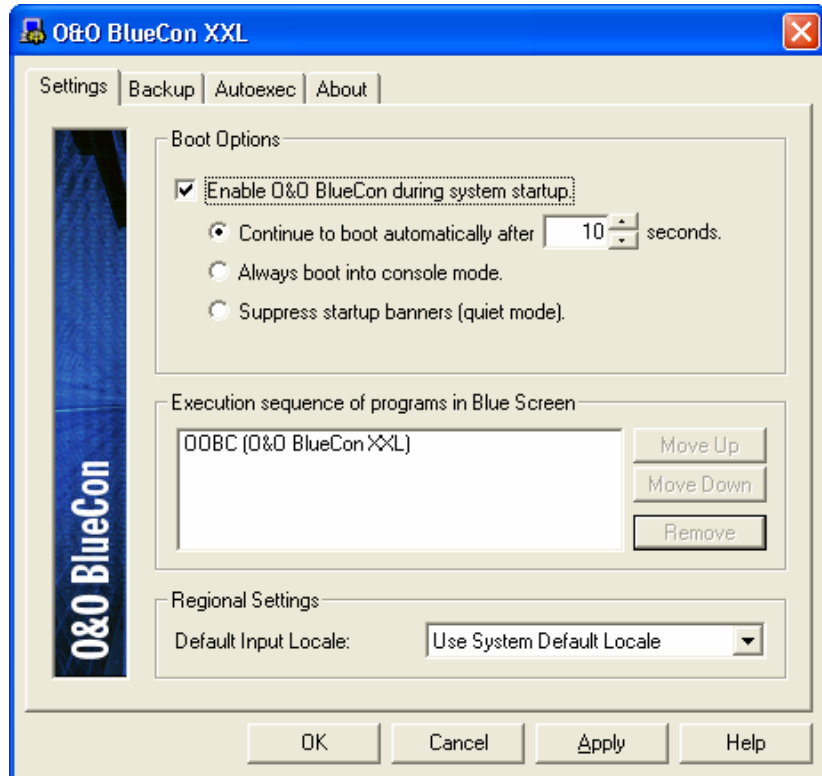


Figure 6 Settings

Boot Options

With the boot options you can either disable or enable O&O BlueCon by checking the appropriate radio button. When you enable O&O BlueCon, it will be launched during the system boot process. Also, you can choose the start mode of O&O BlueCon.

Continue to boot automatically - You can specify a time in seconds after which O&O BlueCon automatically continues to boot Windows NT/2000/XP. It is quite similar to the waiting time while the boot options during system startup are displayed. If you press space, O&O BlueCon will be invoked. Any other key skips O&O BlueCon before the waiting time has expired.

Always boot into O&O BlueCon - During every system startup, O&O BlueCon will be started.

Quiet mode - do not display welcome notices - O&O BlueCon runs during system startup, but will not display any messages. You can press space to start up O&O BlueCon within the first three seconds of the Blue Screen, otherwise NT/2000/XP will continue to boot. This is useful if you want to install O&O BlueCon on user machines, but do not want to confuse users by displaying the welcome message.

Execution sequence of programs in Blue Screen

This list box shows commands that are stored in HKLM\SYSTEM\CurrentControlSet\Control\SessionManager. These commands are worked off automatically at Windows NT/2000/XP startup. As O&O BlueCon initializes the registry at startup, problems might occur e.g. with chkdsk entries. Through this list box you can modify the order of commands.

Regional Settings

O&O BlueCon supports two keyboard layouts: US English and German. You can choose between these two layouts by selecting the appropriate **Default Input Locale**.

If you use the System Default Locale, O&O BlueCon will determine the keyboard layout from your system's Regional Settings. Please note: if you have an input locale, e.g. French, which is currently not supported by O&O BlueCon, US English is chosen by default.

Additionally, you can switch the layout while working in O&O BlueCon. See the KEYB command for further details.

Backup

The backup options of O&O BlueCon provide you with an easy way to backup your critical system configuration data at startup. You can later restore them with O&O BlueCon in case of a system crash or if you want to undo incorrect settings on your machine, e.g. malfunctioning drivers.

O&O BlueCon offers several backup options to customize the backup process.

Complete or Incremental Backup

You can choose between a complete backup of all files at startup or let O&O BlueCon backup those files that have been changed since last backup. The latter option is useful if you have a limited amount of free disk space available. No matter which option you choose, O&O BlueCon can restore the complete last configuration by applying the most recent backups to your system. Please refer to the restore command for more details.

System configuration

The system configuration includes all registry files.

Backup History

You can define a maximum number of backups O&O BlueCon will keep on your disk. If the maximum number is reached, the oldest backup will be overwritten. The number may range between 0 and 999, where 0 means an unlimited number of backups. If you select this option, please ensure that enough disk space is available or manually remove old backup files from time to time.

Destination Folder

Defines a folder where all backup files will be stored. Please note that this cannot be a network folder, as network support is not available while backup runs in the Blue Screen. Click **Browse** to open a browse dialog for choosing the folder. **Create new folder** shows a dialog to create a new folder relative to the current destination folder.

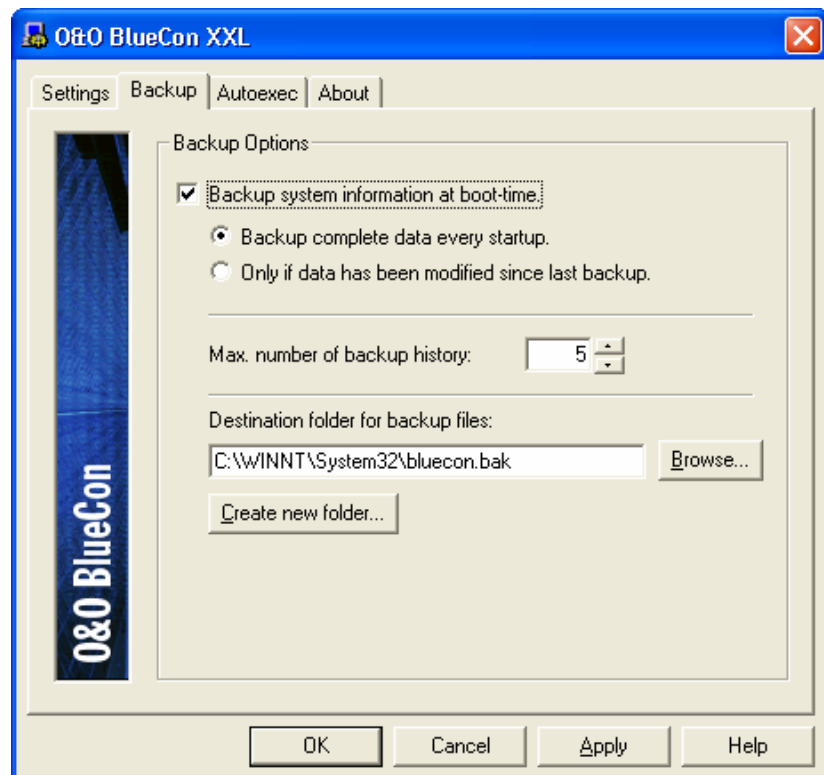


Figure 7 Backup

Autoexec

O&O BlueCon can automatically execute commands at startup. These commands are read from the AUTOEXEC.BC file, which is located in the directory %SystemRoot%\system32.

All commands are processed before the user can log on to O&O BlueCon. You can use all commands as described in the BlueCon Commands section. Please read also the Batch Processing section for further information.

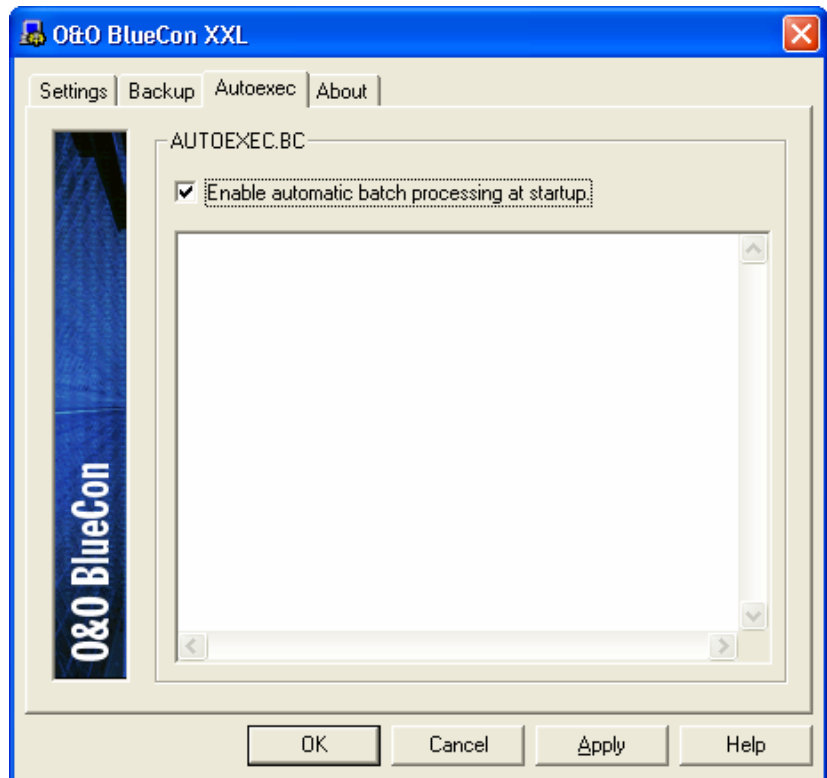


Figure 8 Autoexec

Backup and Restore of System Configuration

O&O BlueCon offers a great new feature: backup and restore of system configuration files. In case that your system fails due to a misconfigured application, service or device, you can restore the previous system state and get your system back up running with minimal efforts. Backup behaves much the same way NT/2000/XP's rdisk does, except that it places the backup files on your local hard disk and not on a floppy disk. If your system fails, you can boot O&O BlueCon from disk or CD-ROM and start the restore procedure to recover your system.

Backup

The backup command copies the content of the %SystemRoot%\system32\config to the given destination folder. This is actually the registry including the local machine, software and account database. Within the destination folder it creates a new subfolder with the current date and an index as its name. In this folder, the backup files will be stored. If you decide to do incremental backups, only files modified since last backup will be copied into a subfolder called 'incr'. This saves disk space and time during start-up. The history option /h:<number> lets you decide, how many backups O&O BlueCon shall keep until the oldest ones are overwritten.

You can configure backup either through the Control Panel Applet from BlueCon's command line. See the corresponding sections for further information.

Restore

Restore replaces your current system configuration with a saved one created with the backup command. This is very useful in case your registry is defective or you want to undo some failed modifications like installation or uninstallation of software. You must provide the same path you used for backup in order to locate the saved

files. The restore command will list all available backups and you can choose one to restore.

Important note for users with multiple boot systems: Please make sure that you do not write a NT 4.0 registry file onto a Windows 2000/XP system! After restoring the configuration, you must reboot the computer in order to have the changes applied. See the restore documentation for further details.

Batch Processing

O&O BlueCon offers batch processing. This is useful for repeating command sequences you do not want to enter manually. It works quite the same way the batch processing of the DOS-prompt does. Please follow the steps outlined below:

1. Create an ASCII file with a text editor like NOTEPAD.
2. Enter the commands - only one command per line - with the required arguments. Commands will be executed as entered at the command prompt. Output will be also printed to the Blue Screen.
3. When finished, save the file with the .BAT-extension. We suggest an 8.3-name convention, as you can easier access short filenames from the console interface.

Now you can execute the batch file from O&O BlueCon. Go to the directory where the batch file is located and type its name (the .BAT-extension will be added automatically). Check whether all commands are executed successfully.

Automatic Batch Processing

O&O BlueCon can use automatic batch processing at system startup. It is quite similar to AUTOEXEC.BAT known from MS-DOS.

Important Note: If you use commands that need parameters (dir/p, edlin, regedit etc.) during the automatic batch processing, the system will wait until they are confirmed locally from the console.

O&O BlueCon uses the file AUTOEXEC.BC that is located in the directory %systemroot\System32. You can use a text editor (such as Notepad) or the Control Applet to edit AUTOEXEC.BC.

Important note: If you enable automatic batch processing at system startup, all commands will be executed without any prior checking, i.e. malicious commands can do harm to your system integrity and stability. You must ensure that the file autoexec.bc cannot be accessed and/or modified by unauthorized users. Please set appropriate write permissions if the file resides on an NTFS volume. Refer to your NT/2000/XP documentation for further instructions on how to set file permissions.

Editing the Registry

The registry is the central storage for all system and user configuration. Errors or defects in the registry can cause your system to stop working correctly. Also wrong parameters for drivers or services can cause severe problems. A registry editor named regedit included in O&O BlueCon allows you to change and correct entries in the registry. There are several commands to add, change or delete a key or value.

Using regedit is quite similar to navigating through a hard disk volume. By starting regedit, O&O BlueCon switches into registry editing mode. Following commands are available then:

Regedit Commands

Command	Description
radd	Adds a key or value to the registry.
rcd	Changes the level in the registry hive.
rdel	Deletes a key or value.
rdir	Lists all keys and values of the current registry hive.
redit	Edits a registry value.
regedit	Starts the registry editor.
rexit	Quits the registry editor.
rhel	Lists all available regedit commands with short descriptions.
rtype	Lists the content of a registry value.

Device and Service Configuration

One of the most common reasons for system crashes are malfunctioning drivers or services. But these are loaded before the user can log on - so you do not have a chance to remove or to replace them. Deactivate the driver or service by using O&O BlueCon driver and service configuration so you can log on to the system again. Then you will have the chance to investigate the reason for the problem and solve it.

The service command lists all installed services and allows the disabling or enabling of them.

If you have a malfunctioning service that crashes your system before you can log on, start O&O BlueCon and execute the service command. You will receive a list of all services like the following one:

```
...
30 UPS Manual
31 Windows Management Automatic
32 Remote Control Agent Automatic
...
```

If the Remote Control Agent is responsible for the crash, you can disable it by simply entering

```
C:\>service 32 disabled
```

The next time the system is booted, the service will not be started. You can now safely log on and install an updated driver or replace a corrupted file.

The device command can be used the same way to enable or disable devices.

Delete data permanently and securely

O&O BlueCon XXL allows you a genuinely secure and permanent erasure of data.

Important firm or private data which no unauthorized person should be able to access can be restored by special programs (such as this one) even after their “normal” erasure by Windows.

Only repeated overwriting of the relevant data can prevent this restoration.

O&O SafeErase erases data with scientifically recognized methods. However, only data that are not currently being accessed can be deleted with O&O SafeErase- and with Windows, some data are always accessed. Deleting the page files or registry under Windows is therefore not possible. However, with O&O BlueCon XXL you can erase files and folders, entire partitions or even hard disk drives.

Use the **safeerase** command in combination with the parameters described in the commands chapter.

Restore deleted data

O&O BlueCon XXL allows you to rescue important files and data which have been deleted by accident, by a virus or by defective software. Windows-based programs for the restoration of data (eg O&O UnErase) have the disadvantage that they do not possess exclusive read and write privileges on the respective hard drive. Therefore there is always a danger that the operating system or another application writes data to the very position that the deleted data occupied. Thus, a complete restoration of the data becomes impossible. With the Boot CD from O&O BlueCon XXL you now have the possibility of searching your hard disk without risk and restoring the data.

Use the **unerase** command in connection with the parameters described in the command chapter.

Booting O&O BlueCon from Disk

One of the most powerful aspects of O&O BlueCon is its ability to boot a Windows NT/2000/XP machine from disk. You can access your volumes even if the installed NT/2000/XP won't start anymore. Or you simply want to access the data on your system without the risk of changing anything. This is especially useful for corrupted file systems or malfunctioning hard drives.

In order to get full access to your FAT and NTFS partitions on different hardware platforms, O&O BlueCon uses the standard Windows NT/2000/XP Setup and patches its startup sequence. This ensures that even with different operating systems (Workstation or Server) in different languages the tool works correctly.

Important note: When booting from disk, you can use the registry editor regedit to change registry keys and values. If you apply changes on the SYSTEM hive, all changes will be discarded at next reboot. However, changes to the LOCAL_SYSTEM hive will be stored in the registry of the selected operating system.

Creating Bootable Disks

O&O BootWizard

To ease the process of creating and patching the Setup disks, O&O BootWizard for BlueCon is provided with all editions. You may launch O&O BootWizard from the O&O BlueCon program group.

Select Boot Device

You can choose either to create an ISO-Image or floppy disks. Please ensure that you have access to the i386-installation directory of Windows NT/2000/XP. This can be either located on a CD-ROM or in a directory on your local machine or a network server.

- **ISO-Image** – A ready-to-go ISO-Image will be created, required to create a bootable CD-ROM. This image can be easily used to create a bootable CD-ROM with any CD-writing software. Therefore you need a CD-writer, a blank CD-Record able and additional software to create a bootable CD-ROM. Also, you need the Windows Setup files on a CD-ROM or stored in a local or network folder. These items are not part of O&O BlueCon and must be purchased separately.
- **Floppy disks** - You need at least three formatted and empty floppy disks for creating a set of boot disks. If you are running Windows 2000, you will need at least four formatted and empty floppy disks. Windows XP requires at least six floppy disks.

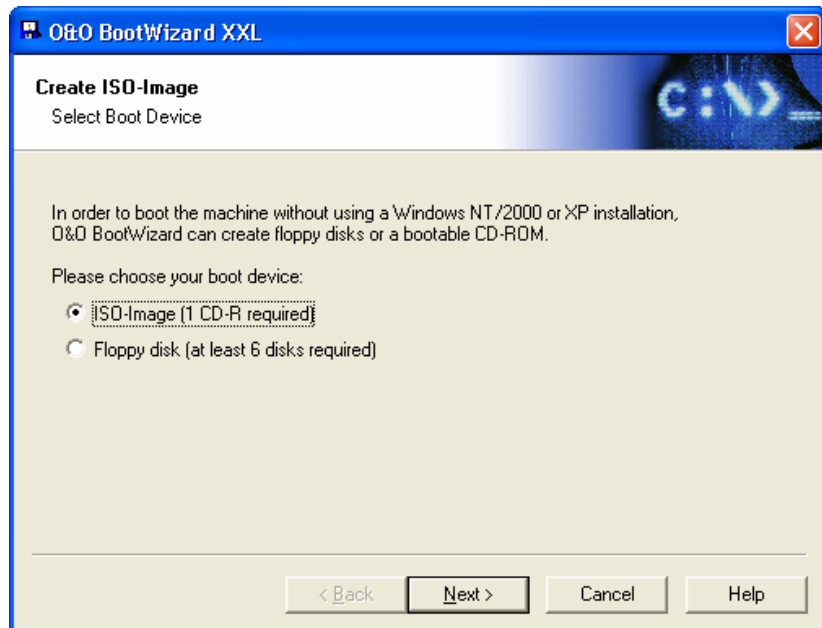


Figure 9 O&O BootWizard – Select Boot Device

Select Source Folder

In order to create a bootable disk set, you must specify the source location of your Windows Setup files. O&O BootWizard will use these files to create a special Setup during which O&O BlueCon can be run. This ensures maximum compatibility with your existing Windows installation.

The folder can be a CD-ROM, a local or a network folder. When you have selected a valid folder, BootWizard will display the contained Windows Setup type. You can proceed by clicking on 'Next'.

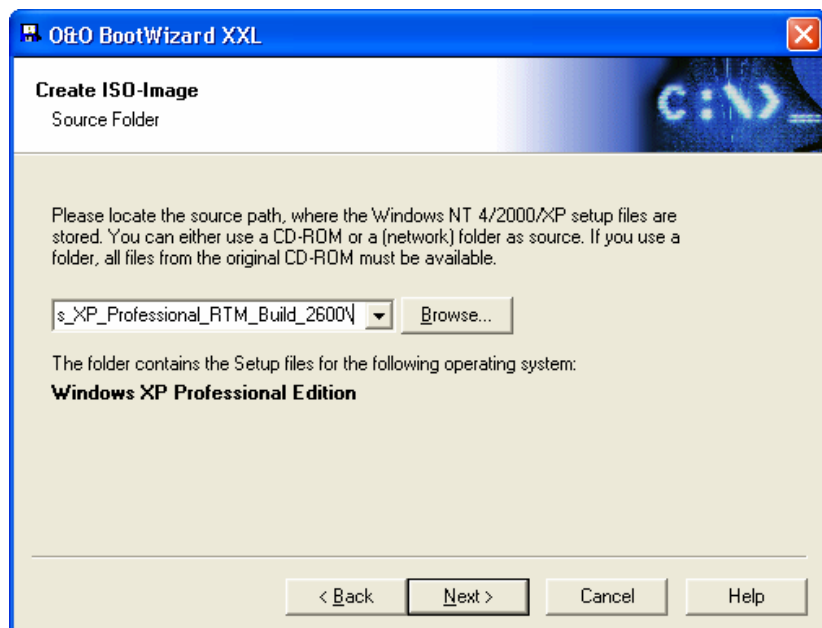


Figure 10 Source Folder

Select Target Folder

Now select a target folder for your ISO-image, CD-ROM or Floppy Disk files. Please note that you have to provide a **folder** for CD-ROM and Floppy Disk and a **filename** for the ISO-Image. The ISO-Image filename should end with .iso

Note: Target folder should be empty. Files are not removed, but might be overwritten by the newly created files. So there might be more files than actually required. We recommend creating a new target folder for your installation.

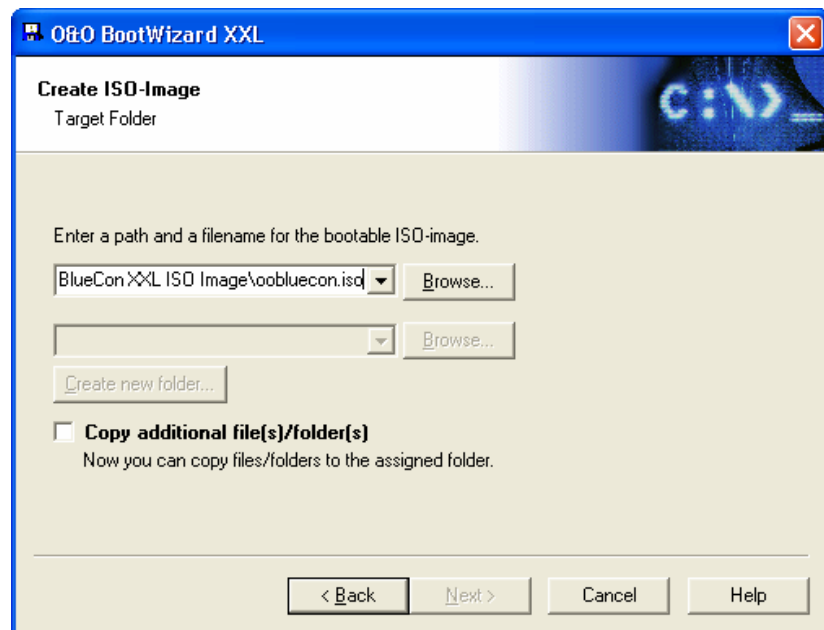
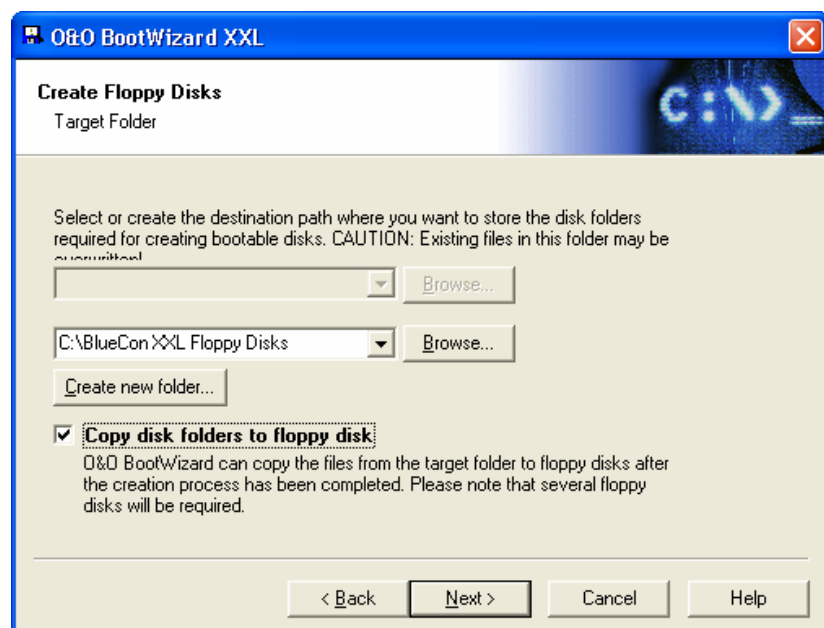


Figure 11 Target Folder for ISO-Image

When you create a floppy disk set, the files will be copied to a folder. In this folder, O&O BootWizard will create subfolders named disk1, disk2, ..., diskN where the files of the corresponding floppy disk are stored. You can instruct BootWizard to copy these files to disks after the copy process has finished. Therefore, check the option **Copy disk folders to floppy disk** and proceed.



Select Options (Windows NT 4 only)

In order to provide you with full access to your FAT- and NTFS-partitions, O&O BlueCon uses the Setup of Windows. This avoids problems with different operating systems (Workstation or Server) in different languages.

Use updated ATAPI driver

If you have Service Pack 4 (SP4) or better installed on your local machine, O&O BootWizard can automatically update the ATAPI-driver which provides you access to hard disks larger than 8 GByte. If you do not have SP4, this option will be disabled.

Use new NTFS5 driver

If you have a parallel Windows 2000 installation on your target machine, you must use the new NTFS5 driver to access these volumes. O&O BootWizard can extract all required files from a Service Pack installation and copy them to disk.

NOTE: Service Pack 4 or higher is required for this option. You must either have a folder with the uncompressed files or uncompress the installation archive to a new folder.



Figure 13 Selecting options (Windows NT 4)

Choose Driver Support

If you are using a hardware controller that is not natively supported by Windows NT 4, Windows 2000, or Windows XP, you can choose to use drivers provided by the manufacturer.

Add them by enabling the 'Use OEM Controller Drivers' option and click on 'Add' to add OEM drivers to your setup. These are usually .sys-files provided by the manufacturer of the corresponding hardware. For further information, please read the manufacturer's documentation.

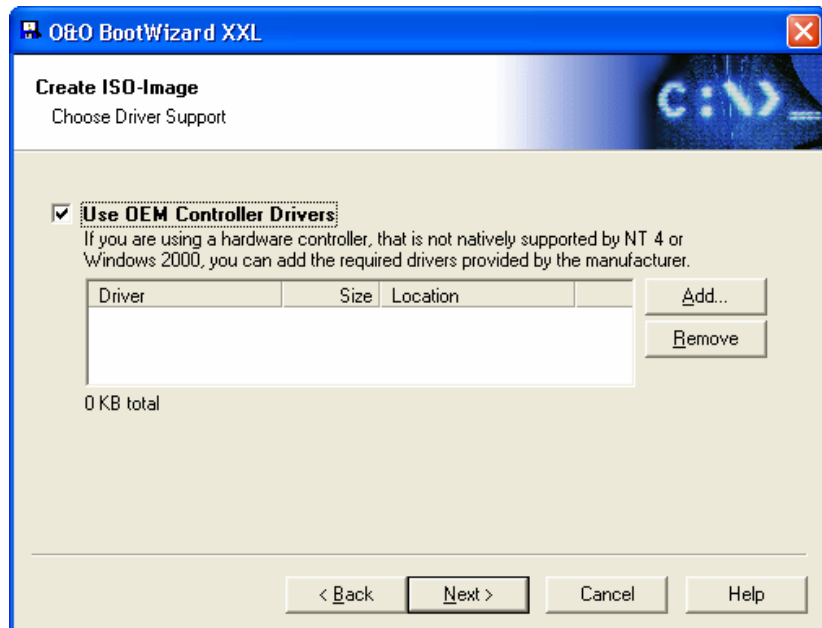


Figure 14 Choose Driver Support

Additional Tools

O&O BlueCon enables you to use the additional commands `chkdsk`, `convert` and `format` (Windows 2000/XP only). These commands are copied to your disk set/CD-ROM and can be used like the other O&O BlueCon command at the console.

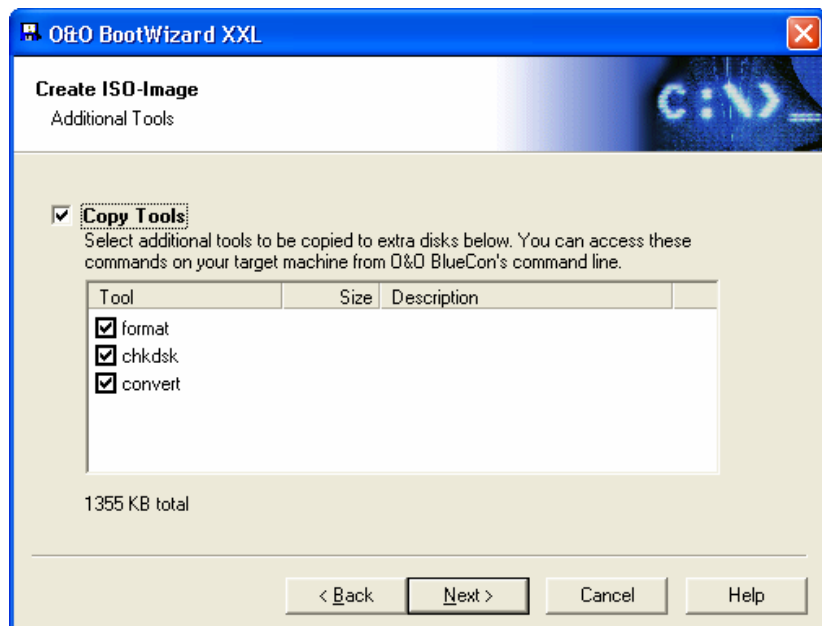


Figure 15 Additional tools

Locating Service Pack (Windows NT 4 only)

In order to use the new NTFS5 driver on your boot disks, some required files must be copied from a Service Pack installation to disk. Therefore, you can locate the folder with the uncompressed installation files. However, if you only have the

compressed Setup executable, O&O BootWizard can help you extracting the files. Click on the button and follow the instructions.

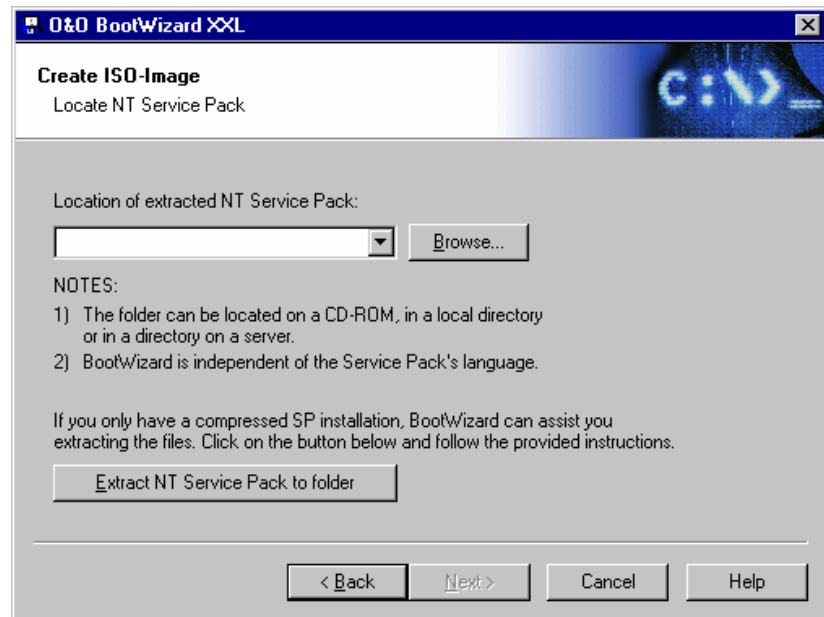


Figure 16 Locating Windows NT Service Pack

NOTE: Service Pack 4 or higher is required for this option. You must either have a folder with the uncompressed files or uncompress the installation archive to a new folder.

Password Protection

With the new password protection, you can protect the bootable disk set against unauthorized use. Every time, you boot from disk, you must provide this password to get access to the system.

We encourage you not to use your Windows account password! This password is completely independent from your account password!

It must be at least 4 characters long and should be hard to guess. The password will be stored encrypted on your disk set and therefore cannot be recovered by you or by anyone else. Please remember this password well!

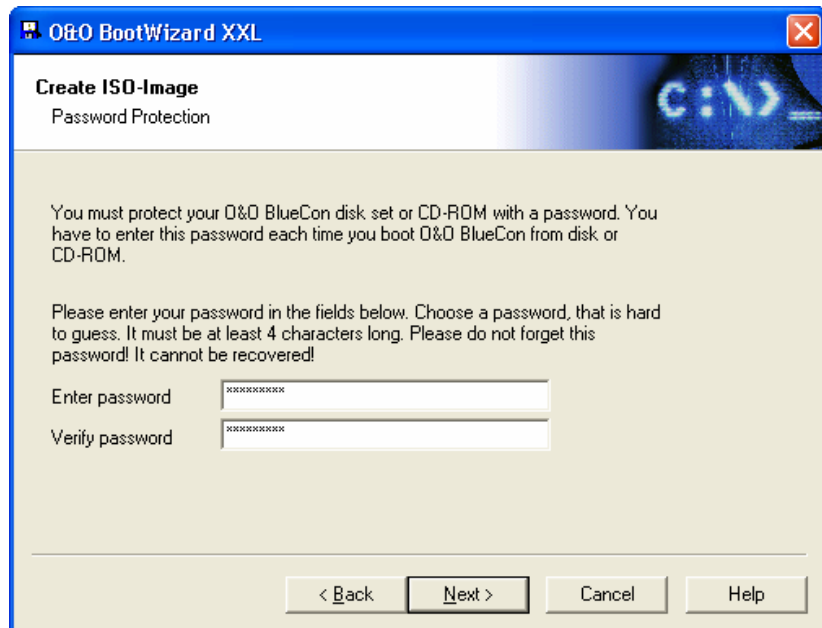


Figure 17 Password Protection

Copy Setup Files

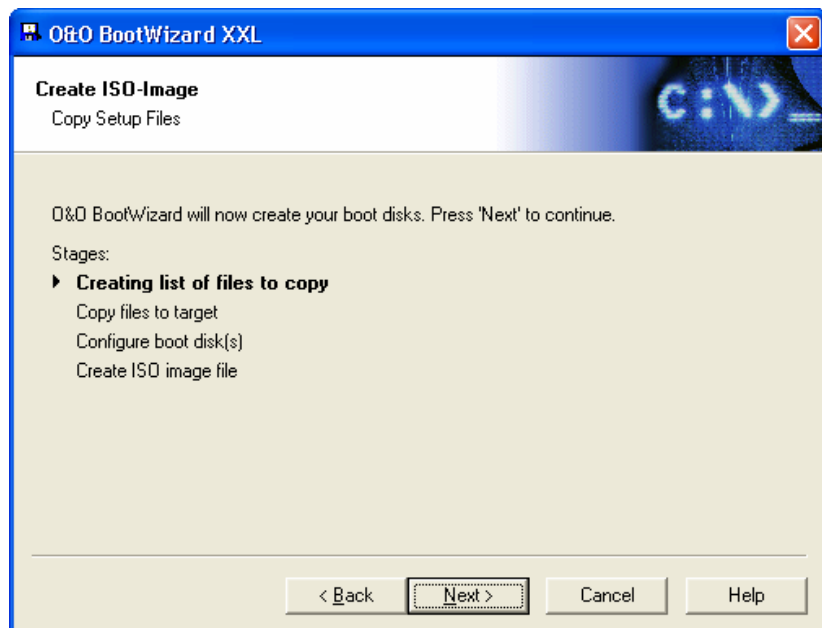


Figure 18 Copying files

O&O BootWizard will now copy all files from the Setup folder. O&O BootWizard will prompt you to insert any required disks during the copy process. Just follow the instructions.

Finished

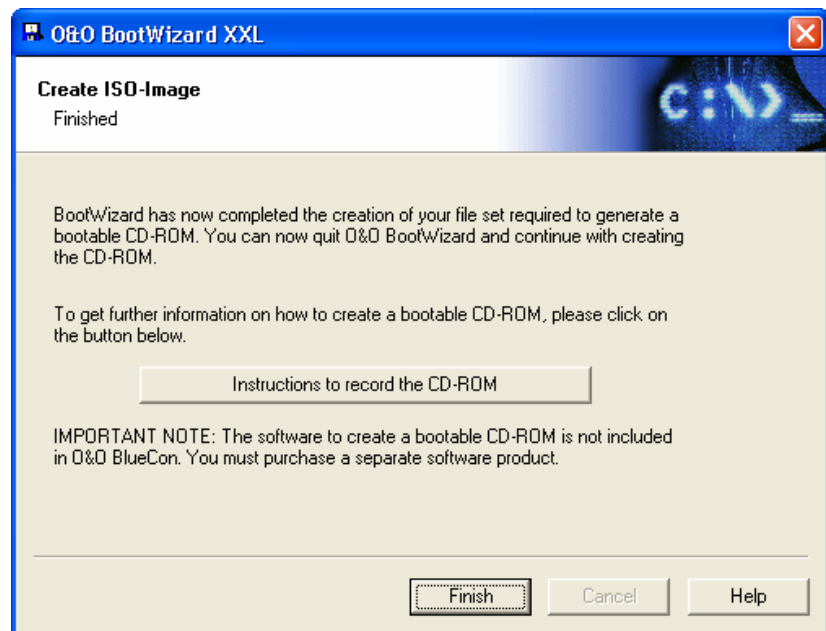


Figure 19 ISO-Image creation finished

After the copy process has successfully finished, you can record your CD-R.

Recording the CD-R from an ISO-Image

The ISO file you have created with the aid of O&O BootWizard meets the ISO9660 standard. You can write this file to a CD-R or CD-RW with every CD recording software that supports this feature. For further instructions concerning the ISO9660 file, please consult the documentation of the software concerned.

O&O BlueCon Commands

Command Index

O&O BlueCon offers commands you already know from MS-DOS or the DOS-prompt in Windows NT/2000/XP. The Command Index lists all commands, their syntax and parameters. If you need help on a particular command, you can use the `/?` switch to display a short description of the syntax and the command's purpose.

attrib

Displays or changes file attributes. This command displays, sets, or removes the read-only, archive, system, hidden, and compressed attributes assigned to files or directories.

Syntax	attrib [+ -] [rshc] [<drive:>][<path>]<filename>
---------------	--

Parameters

<drive:>	Specifies the location and name of the directory, file, or set of files you want to process.
<path>	
<filename>	
+	Sets the specified attributes.
-	Clears the specified attributes.
r	Read-only file attribute.
a	Archive file attribute.
s	System file attribute.
h	Hidden file attribute.

backup

Backups your registry. You can restore it by using the restore command.

Note: If you run O&O BlueCon from disk, backup will immediately perform a backup operation. However, if you run O&O BlueCon from your local installation, backup will not save any data. Instead, it will configure automatic backup at system startup. Every time you start your computer, the backup will be run. See also the Control Panel section for further information on how to configure backup at startup.

Syntax `backup /off | { /system [/c] [/h:<number>] [<drive:>][<path>] }`

Parameters

<code>/off</code>	Disables backup at next system startup.
<code>/system</code>	Backups the registry.
<code>/c</code>	Incremental backup. Only modified files will be backed up. Default is full backup.
<code>/h:<number></code>	Number of backups to keep (history). Default is unlimited.
<code><drive:></code> <code><path></code>	Specifies the location and name of the directory, where you want to store the backup files. This directory must be existing and empty.

See also Restore
Backup and Restore of System Configuration

Example: `backup c:\Winnt\system32\bluecon.bak`

bgcolor

Sets the background color.

Syntax `bgcolor [color]`

Values

Black	0
Green	1
Blue	2
Grey	3
Red	4
Dark yellow	5
Purple	6
Sea	7
Dark grey	8
Light green	9
Light blue	10
White	11
Light red	12
Yellow	13
Pink	14
Cyan	15

Example: `bgcolor 5`

cd

Displays the name of the current directory or changes the current directory.

Syntax `cd [[<drive:>]<path> | ..]`

Parameters

None	Used without parameters, cd displays the names of the current drive and directory.
<drive:> <path>	Specifies the drive (if different from the current drive) and directory to which you want to change.
..	Specifies that you want to change to the parent directory.

Example: `C:\>Windows\test>cd ..`

chkdsk

Note: This command is only available if you have copied it to the disk set. See Additional Tools for more information.

Checks the disk and displays a status report.

Syntax `chkdsk drive: [/F] [/R] [/I] [/C]`

Parameters

/F	Fixes errors on the disk.
/R	Locates bad sectors and recovers readable information.
/I	NTFS only: performs a less vigorous check of index entries.
/C	NTFS only: skips checking of cycles within the folder structure.

Example: `chkdsk c: /F`

cls

Clears the screen. The cleared screen shows only the command prompt and cursor.

Syntax `cls`

Parameters None

convert

Note: This command is only available, if you have copied it to the disk set. See Additional Tools for more information.

Converts FAT volumes to NTFS.

Syntax `convert drive: /FS:NTFS [/V]`

Parameters

/FS:NTFS	Specifies that the volume has to be converted to NTFS.
/V	Specifies that convert should be run in verbose mode.

Example: convert c: /fs:ntfs

copy

Copies one or more files to another location.

Syntax `copy <source> <destination>`

Parameters

<source>	Specifies the location and name of a file or group of files you want to copy. Source can consist of a drive letter and colon, a directory name, a filename or a combination. To specify a group of files, you may use wildcards.
<destination>	Specifies the location and name of a file or group of files to which you want to copy. Destination can consist of a drive letter and colon, a directory name, a filename, or a combination. To specify a group of files, you may use wildcards.

Example: copy c:\test d:\test

del

Deletes specified files.

Syntax `del [<drive:>][<path>]<filename>`

Parameters

<drive:>	Specifies the location and name of the file or set of files you want to delete. Multiple filenames can be used. Filenames can be separated by spaces, commas or semicolons.
<path>	
<filename>	

Example: del c:\test.txt

deltree

Deletes specified directory.

Syntax `deltree [<drive:>]<path>`

Parameters

<drive:>	Specifies the location and name of the directory you want to delete. Subdirectories and files in this directory will also be deleted.
<path>	

Example: `deltree c:\Windows\test*.*`

device

Device configuration manager. You can use device to list installed devices and change their startup modes.

Syntax	<code>device [<device#> { boot system auto manual disabled }]</code>
---------------	---

Parameters

None	Used without parameters, device lists all installed devices. Displays one screen of the listing at a time. To see the next screen, press SPACE or any other key to abort listing.
<device#>	Specifies the number of the device whose startup mode you want to change.
Boot	Sets the startup mode to Boot. Device will start before any other device starts. Used for essential system devices.
System	Sets the startup mode to System. Device will start after all Boot devices have been started.
Auto	Sets the startup mode to Automatic. Device will start after all Boot and System devices have been started.
Manual	Sets the startup mode to Manual. Device will not be started. User can manually start after logon.
Disabled	Sets the startup mode to Disabled. Device will not be started.

See also [Accessing Multiple Boot Systems](#)

Example: `device`
`device 6 disabled`

dir

Displays a list of a directory's files and subdirectories.

Syntax	<code>dir [/p] [[<drive:>][<path>]<filename>]</code>
---------------	--

Parameters

None	Used without parameters or switches, dir displays the disk's volume label and serial number; one directory or filename per line, including the filename extension, the file size in bytes, the date and time the file was last modified; and the total number of files listed, their total size, and the free space (in bytes) remaining on the disk.
/p	Displays one screen of the listing at a time. To see the next screen, press any key.
<drive:>	Specifies the drive and directory of which you want to see a listing.
<path>	

<filename> Specifies a particular file or group of files of which you want to see a listing. Multiple filenames can be used. Filenames can be separated by spaces, commas, or semicolons.

Example: dir /p

edlin

Important note: Do not edit binary files with edlin! This leads to corrupted files and may make your system unbootable and/or unstable.

Starts edlin, a line-oriented text editor which can create and change ASCII files. Edlin numerates each line of the text file that is located in the memory. You can insert, modify, copy, move, and delete lines of the file.

Syntax edlin [<drive:>][<path>]<filename>

Parameters

<drive:> Specifies the location and name of the file you want to edit. If the file already exists, it will be opened. If it does not exist, edlin creates a new file in memory and saves it to the specified location when exiting edlin.

<path>

<filename>

Commands

F1 Show command help

F2 Save changes

F3 Show file content

F4 Edit current line

F5 Insert new line after current line

F6 Insert new line before current line

F7 Delete current line

F10 Save and exit

ESC Exit without saving

Example: edlin c:\test\test.txt

exit

Quits O&O BlueCon and continues to boot Windows NT/2000/XP. If O&O BlueCon was booted from disk, the system will be automatically rebooted.

Syntax Exit

Parameters None

fgcolor

Sets the foreground color.

Syntax fgcolor [color]

Values

Black	0
Green	1
Blue	2
Grey	3
Red	4
Dark yellow	5
Purple	6
Sea	7
Dark grey	8
Light green	9
Light blue	10
White	11
Light red	12
Yellow	13
Pink	14
Cyan	15

Example: fgcolor 7

format

Note: This command is only available, if you have copied it to the disk set. See Additional Tools for more information.

Formats a disk. This command is only available under Windows 2000

Syntax format drive: [/FS:filesystem] [/Q] [/C]

Parameters

/FS:filesystem	Specifies the type of the file system (FAT, FAT32 or NTFS)
/Q	Performs a quick format.
/C	Files created on the new volume will be compressed by default.

Example: format c:\

ftdisk

Loads and initializes fault-tolerant disk support.

Syntax ftdisk

Parameters None

help

Lists all available commands with short descriptions. If you need help on a particular command, you can use the `/?` switch to display a short description of the syntax and the command's purpose.

Syntax	Help
Parameters	None

info

Displays information about the file system and volumes.

Syntax	Info [hdd <drive:>]
---------------	--------------------------------

Parameters

Hdd	Displays information about available drives including hard drives, floppy disks, CD-ROMs etc.
<drive:>	Specifies the drive from which you want to receive information (MFT location, cluster size, number of sectors etc.)

keyb

Changes the codepage used for keyboard input. When O&O BlueCon is executed locally, settings are stored in the registry and will be used in future sessions.

Syntax	keyb [SYSTEM US GR]
---------------	----------------------------------

Parameters

SYSTEM	Uses the Default System Locale as defined in "Regional Settings". Please note that currently only US English and German keyboard layouts are supported. Therefore, unknown locales will be reset to US English.
US	US English keyboard layout (QWERTY). Codepage 437
GR	German keyboard layout (QWERTZ). Codepage 850

mkdir

Creates a directory or subdirectory.

Syntax	mkdir [<drive:>]<path>
---------------	-------------------------------

Parameters

<drive:>	Specifies the drive on which you want to create the new directory.
<path>	Specifies the name and location of the new directory. The

maximum length of any single path is determined by the file system.

Example: `mkdir C:\test`

passwd

Changes or removes the password for a user account.

Syntax `passwd <user account> [<password>]`

Parameters

<code><user account></code>	The user account whose password will be changed or removed.
<code><password></code>	The new password for the user account. An empty password resets the current password, i.e. the password becomes empty.

Example: `passwd administrator test`

radd

Note: This command is only available in regedit-mode. See also regedit for further information on how to use the registry editor.

Adds a key or value to the registry.

Syntax `radd { key | value } <name>`

Parameters

<code>key</code>	Creates a new key <name> in the current registry hive level.
<code>value</code>	Creates a new value <name> in the current registry hive level.
<code><name></code>	The name for the key or value to create. If it contains spaces you must enclose the name with quotation marks (").

See also `rcd, rdel, rdir, reedit, regedit, rexit, rhelp, rtype`

rcd

Note: This command is only available in regedit-mode. See also regedit for further information on how to use the registry editor.

Changes the level of the registry hive; similar to the cd command.

Syntax `rcd <key>`

Parameters

<key> Specifies the key to which you want to change.
.. Specifies that you want to change to the parent key.

See also radd, rdel, rdir, redit, regedit, rexit, rhelp, rtype

rdel

Note: This command is only available in regedit-mode. See also regedit for further information on how to use the registry editor.

Deletes a key or value.

Syntax rdel <name>

Parameters

<name> The name for the key or value to delete. If it contains spaces you must enclose the name with quotation marks ("").

See also radd, rcd, rdir, redit, regedit, rexit, rhelp, rtype

rdeltree

Note: This command is only available in regedit-mode. See also regedit for further information on how to use the registry editor.

Deletes a key.

Syntax rdeltree <name>

Parameters

<name> The name for the key to delete. If it contains spaces you must enclose the name with quotation marks ("").

See also radd, rcd, rdel, rdir, redit, regedit, rexit, rhelp, rtype

rdir

Note: This command is only available in regedit-mode. See also regedit for further information on how to use the registry editor.

Lists all keys and values of the current registry hive.

Syntax rdir

Parameters None

See also radd, rcd, rdel, redit, regedit, rexit, rhelp, rtype

reboot

Exits BlueCon and restarts the system.

Syntax	reboot
---------------	---------------

Parameters	None
-------------------	------

redit

Note: This command is only available in regedit-mode. See also regedit for further information on how to use the registry editor.

Edits a registry value. You can edit DWORD, string and multi-string values. Binary values cannot be edited.

Syntax	Redit <value>
---------------	----------------------------

Parameters

<value>	Specifies the value you want to edit.
---------	---------------------------------------

See also	radd, rcd, rdel, rdir, regedit, rexit, rhelp, rtype
-----------------	---

regedit

Starts the registry editor. If you have a multiple boot system, you will be asked for the registry to edit. Navigation through the registry is quite similar to navigating through a file system. You can use rcd and rdir to change and list registry hives and radd, rdel and rtype to add, remove or view keys and its values. At any time, you can press F1 to get a list of available commands and a short explanation.

Syntax	Regedit
---------------	----------------

Parameters	None
-------------------	------

See also	Editing the Registry Accessing Multiple Boot Systems radd, rcd, rdel, rdir, redit, rexit, rhelp, rtype
-----------------	--

rename

Changes the name of a file. You cannot use the **rename** command to rename files across drives or to move files to a different directory location.

Syntax	rename [<drive:>][<path>]<old> <new>
---------------	---

Parameters

<drive:>	Specifies the drive on which you want to rename the specified file.
----------	---

<path>	Specifies the location of the file to be renamed. The maximum length of any single path is determined by the file
--------	---

	system.
<old>	Specifies the name of the file you want to rename.
<new>	Specifies the new name for the file. You cannot specify a new drive or path.

Example: rename c:\test\test.txt test1.txt

restore

Restores configuration data that has been saved with the backup command.

Note: If you run O&O BlueCon from your local installation, restoring your system configuration will force a reboot in order to apply all changes. This is not required if you boot O&O BlueCon from disk or CD-ROM.

Syntax	restore { /system } [<drive:>][<path>]
---------------	---

Parameters

/system	Restores the registry.
<drive:>	Specifies the location and the name of the directory, where the backup files are stored. This directory must be the same you provided when using the backup command.
<path>	

See also Backup
Backup and Restore of System Configuration

Example: restore c:\winnt\system32\bluecon.bak

rexit

Note: This command is only available in regedit-mode. See also regedit for further information on how to use the registry editor.

Quits the registry editor.

Syntax	rexit
---------------	--------------

Parameters	None
-------------------	------

See also radd, rcd, rdel, rdir, redit, regedit, rhelp, rtype

rhelp

Note: This command is only available in regedit-mode. See also regedit for further information on how to use the registry editor.

Lists all available regedit commands with short descriptions. If you need help on a particular command, you can use the `/?` switch to display a short description of the syntax and the regedit command's purpose.

Syntax	rhelp
Parameters	None
See also	radd, rcd, rdel, rdir, redit, regedit, rexit, rtype

rmdir

Deletes (removes) a directory.

Syntax	rmdir [<drive:>]<path>
Parameters	
<drive:>	Specifies the drive on which you want to delete the specified directory.
<path>	Specifies the name and location of the directory to be deleted. The maximum length of any single path is determined by the file system.

rtype

Note: This command is only available in regedit-mode. See also regedit for further information on how to use the registry editor.

Displays the content of a registry value.

Syntax	rtype <value>
Parameters	
<value>	Specifies the value you want to display.
See also	radd, rcd, rdel, rdir, redit, regedit, rexit, rhelp

safeerase

Securely deletes files or volumes.

Syntax	safeerase [/<security level>] [/output <file>] [/verbose] [/silent] [/help] [/showdisks] [/matchfile] [/matchfolder] [/matchall] [/volume <drive>] [/disk <hard drives#>] [/freespace <drive>] [/y]
Parameter	
None	Help text will be displayed.
/highestsecurity	The available security levels. They refer to the deletion methods described. If no security level is chosen, the default is /highest security.
/highsecurity	

<code>/mediumsecurity</code>	
<code>/lowsecurity</code>	
<code>/lowestsecurity</code>	
<code>/output <Datei></code>	Saves the output additionally to a file.
<code>/verbose</code>	Detailed output will be shown.
<code>/silent</code>	Screen output will not be shown.
<code>/help, /?</code>	Help will be shown.
<code>/showdisks</code>	Shows drive and hard disk information. The disks will be numbered so that the numbers can be used with the command <code>/disk</code> .
<code>/matchfile</code>	Only matching files will be deleted. (Standard) Use the 'match' command in combination with a file filter (e.g. <code>*.txt</code> , <code>a?c.exe</code>)
<code>/matchfolder</code>	Only matching folders will be deleted.
<code>/matchall</code>	Matching files and folders will be deleted.
<code>/volume <Laufwerk></code>	Deletes the entire content of the drive.
<code>/disk <Festplatten#></code>	Deleted the entire hard disk.
<code>/freespace <Laufwerk></code>	Deletes free space on the drive.
<code>/y</code>	All security checks will be suppressed.

Examples:

`safeerase beispiel.txt /output test.log`

– *The text file is deleted with the highest security method and the output saved in the file test.log.*

`safeerase /matchfile *.txt /silent /mediumsecurity`

– *All text files in the current folder are deleted with the medium security level without output to screen.*

`safeerase /freespace c: /verbose`

– *The free space on c: is deleted with the highest security method and detailed output.*

`safeerase /volume d: /y /lowsecurity`

– *The content of the drive d: is deleted with the low security level and without security checks.*

`safeerase /disk 0`

– *All partitions on the first hard disk are completely deleted.*

All parameters, apart from `/help` and `/showdisks`, can be combined with one another.

scopy

Copies one or more files to another location. If the files are located on an NTFS volume, security and ownership attributes will be preserved.

Syntax `scopy <source> <destination>`

Parameters

<code><source></code>	Specifies the location and the name of a file or group of files you want to copy. Source can consist of a drive letter and colon, a directory name, a filename, or a combination. To specify a group of files, you may use wildcards.
<code><destination></code>	Specifies the location and name of a file or group of files to which you want to copy. Destination can consist of a drive letter and colon, a directory name, a filename, or a combination. To specify a group of files, you may use wildcards.

service

Service configuration manager. You can use service to list installed services and change their startup modes.

Syntax `service [<service#> { auto | manual | disabled }]`

Parameters

none	Used without parameters, service lists all installed services. Displays one screen of the listing at a time. To see the next screen, press SPACE or any other key to abort listing.
<code><service#></code>	Specifies the service for which you want to change startup mode.
auto	Sets the startup mode to Automatic (service will be started).
manual	Sets the startup mode to Manual (service will start on demand).
disabled	Sets the startup mode to Disabled (service will not start).

See also [Accessing Multiple Boot Systems](#)

Example: `service 12 disabled`

type

Displays the contents of a text file. Use the type command to view a text file without modifying it.

Syntax `Type [<drive:>][<path>]<filename>`

Parameters

<code><drive:></code>	Specifies the location and name of the file you want to view.
<code><path></code>	If using long filenames and if the filename contains spaces, you must enclose the filename within quotation marks (") or
<code><filename></code>	

use the short (8.3 style) filename.

Example: type c:\test\test.txt

unerase

Restores deleted files. Can be carried out in either Wizard or Expert mode.

Example: unerase c:\Eigene Dateien\abcd.txt restores the file *abcd.txt*.

The **WIZARD MODE** offers you a step-by-step guide to restoring files. Example:

1. Drive display:

```
C: System          (NTFS) Size: 10236 MB Free: 4587 MB
D: Data           (NTFS) Size: 14998 MB Free: 13519 MB
```

2. Choose the drive where the deleted data are to be found: C:

Searched drive C: - SYSTEM (NTFS): 3653 deleted file(s) found

3. Enter the file filter: *.txt

1 deleted file(s) found

4. Do you want to see the file list (Y/N)? y

Nr.	Name	Size	Date	Path	Rating
1.	beispiel.txt	36	28.10.02	C:\???\	100%

5. Do you want to enter another file filter (Y/N)? N

6. Enter the target drive and directory (". " for the current list): d:\

7. Restore: C:\???\beispiel.txt -> d:\beispiel.txt

Are you sure (Y/N/All/ESC)? Y

After successfully restoring file(s), the program will exit. It can be ended at any time with ESC.

The **Expert mode (COMMAND MODE)** is the highest-performance mode. This mode allows you to scan one or several drives and filter the files. There are also additional filtering, sorting or restoring features.

After starting up, the input request looks like this: **Command 0/0>** The first number stands for the number of files in the filtered file list and the second for the number in the main list.

The main list contains all deleted files that were found when the drive is scanned. With the command 'Filter', you can copy files meeting the relevant criteria from the main list to the filtered list. The filtered list can only include files that are also in the main list. If the main list is deleted, for example if you start a new scan, the filtered list will automatically be empty. If a second drive is scanned, the files found will be added to the main list.

The lists can be displayed and sorted according to various criteria.

Amongst others, there is the unique command 'DeleteDoubles', which deletes older versions of duplicated files from the relevant list. Then the files you have entered can be restored.

At the end of the general parameter list you will find an overview of the available commands. You can use either the full or the abbreviated form (in brackets).

Syntax **unerase** [/scan] [/cmdmode] [/wizard] [<File filter>] [<Target directory>] [/p] [/y] [/help] [/?] [/fullname] [/silent] [/output <file>]

Parameters

None	Help text will be displayed.
/scan	Search for deleted files, does not restore. You can use <File filter> (".\" for the current directory), otherwise the entire drive will be scanned.
/cmdmode	Use expert mode
/wizard	Use assistant mode
/fullname	Show complete file and path names. If this option is turned off, file names that are too long will be shortened in order to retain the table format.
<File filter>	All files (complete path) which match this Wildcard Filter will be selected. You can enter any number of wildcards (there are two types): ? stands for a single character * stands for any number of characters (can also be zero) e.g.: *.txt, a?c.txt
<Target directory>	Enter a target directory for restoring or scanning. Otherwise, the file will be saved in the current directory or the entire current drive will be searched. If the file is to be saved on the original drive, a security check will be shown. We recommend you save the file on another partition to avoid possible data loss.
/p	Pause in the output after each page
/output <file name>	Save output to a file
/silent	Suppress output to screen
/y	Suppress security checks
/help, /?	Show help

COMMAND MODE Command (Parameters in square brackets are optional)

Options:	
<List>	(M)ain or (F)ilter
<Type>	(F)ile, (P)ath, FullFile(FF), (D)ate, (S)ize, (R)ate
	File means 'FullFile' Path and file name. 'Rate' is the percentage of restorable data.
<Operation>	=, ! (ungleich), <, >, <=, >=, * (Wildcard)

(L)ist	Show usable drives.
(S)can <Drive>	Search the selected drive and adds the files to the main list. (e.g. scan D – without colon)
(R)estore <List> [<Nr.>] [<Nr.>] [-] [<Nr.>] ...	Restore files from the entered list. Indices can be entered in order to restore selected files from the list.
(V)iew <List> [<Start number>]	Show the entered list, a start number can also be entered.
(N)ext	Show the next page of the currently displayed list.
(P)rev	Show the previous page of the currently displayed list.
(C)lear <List>	Delete the entered list.
(F)ilter <List> [<Typ> <Operation>] <Filter>	Copy elements of the entered list that match the criteria to the filtered list. If type and operation are not entered, FullFile/Wildcard are used (normal file filter).
DeleteDoubles(DD) <Liste>	Remove duplicated files from the entered list, just keep the newest version of the file.
Sort(St) <List> [<Typ>] [(D)own]	Search the entered list by type. If no type is entered, Fullfile will be used for sorting. "(D)own", unlike Standard, sorts downwards.
(D)estDir [<Target directory>]	Show or enter target directory. You can enter '.' for the current directory or '..' for the next directory.
FullName(FN) ON/OFF	Switch complete file name display on or off. If this option is turned off, file name that are too long will be shortened in order to preserve the table format. Standard: off
PagePrint(PP) ON/OFF/<Line>	Set page size of the output, switch output on or off. Standard: On, 40 lines
E(x)it	End program.

user

Displays a list of all local user accounts.

Syntax	user
Parameters	None

ver

Displays the version number of O&O BlueCon.

Syntax	ver
Parameters	None

vmap

Lists all mounted volumes, their mappings and additional information.

Syntax	vmap
---------------	-------------

Parameters	None
-------------------	------

xcopy

Copies files and directories, including subdirectories.

Syntax	xcopy [/e] [/s] <source> <destination>
---------------	---

Parameters

/e	Copies all subdirectories, even if they are empty.
/s	If the files are located on an NTFS volume, security and ownership attributes will be preserved.
<source>	Specifies the location and the name of a file or group of files you want to copy. Source can consist of a drive letter and colon, a directory name, a filename or a combination. To specify a group of files, you may use wildcards.
<destination>	Specifies the location and name of a file or group of files to which you want to copy. Destination can consist of a drive letter and colon, a directory name, a filename, or a combination. To specify a group of files, you may use wildcards.

Example:	<code>xcopy c:\windows\test*. * d:\test\</code>
-----------------	--

Support

Online Resources

For more information about O&O BlueCon, please visit our web site <http://www.oo-software.com> which offers up-to-date information about the latest development of our products. There are also regularly updated FAQs and Knowledge Bases to answer the most common questions and problems about our products.

Technical Support

All registered customers of O&O products will receive free installation and product support for 90 days from the date of registration. Please do not forget to give your registration code (see the Product ID in the About box) when contacting our support!

However, we also provide limited support by e-mail for users of the unregistered version. As we receive a large number of requests every day, please allow some days for an answer.

Please read the Frequently Asked Questions (FAQ) on our Internet site (see below) before contacting our support, as there might already be a solution for your problem.

O&O Software GmbH

Internet: <http://www.oo-software.com>

Support: support@oo-software.com

Sales: info@oo-software.com

Am Borsigturm 48, 13507 Berlin, Germany

Tel. +49-(0)30-430343-00

Fax: +49-(0)30-430343-99

Software License Agreement

License Agreement for O&O BlueCon XXL Administrator's Suite (EULA)

IMPORTANT - PLEASE READ CAREFULLY

This end-user license agreement is a legal contract between yourself (either as a natural or a legal person) and O&O Software GmbH for the above-mentioned software product. By installing the software product you agree to be bound by the terms of this license agreement.

If you do not accept the provisions of this license agreement, you are not authorized to install or use the software product. In this case, send the data medium and all other parts of the acquired product (including all written material, delivered hardware and packaging) back to O&O, or the dealer it was bought from, without delay. The full cost of purchase will be reimbursed.

The software product is protected both by copyright laws and international copyright agreements and by other laws and agreements on intellectual property.

1. Subject of the agreement

This agreement concerns the computer program recorded on the data carrier, the program description and operating instructions, and all other accompanying written material. These are referred to from hereon as "software".

O&O would like to point out that, due to the current state of technology, it is not possible to produce computer software than will function in all applications and configurations without any errors at all. Therefore, only software that is used according to program description and instructions of use is subject to this agreement.

2. Extent of use

For the duration of this agreement O&O grants you the simple, not exclusive, personal right (referred to as 'license' in the following) to

use the enclosed copy of O&O software on a single computer and in one place only. If the computer is a system for multiple users, the right to use applies to all its users.

As licensee, you may transfer substantial software (i.e. stored on a data carrier) from one computer to the other, on the condition that is deleted from the computer on which the it was initially used. Further use, especially the repeated installing and uninstalling on different computers (floating license), is not permitted.

a) O&O BlueCon XXL Administrator's Suite – Administrator license

You are permitted to install and use the software product on one single computer. An administrator (licensee) may use the bootable data medium for system rescue (O&O BlueCon-Boot-CD) that can be created by using the software product on any appropriate computer inside one company or a comparable organizational unit. A licensed full version on the target computer is not required. IMPORTANT: THIS LICENSE IS BOUND TO A NATURAL PERSON (ADMINISTRATOR). IF DIFFERENT ADMINISTRATORS ARE TO USE THE O&O BLUECON BOOT-CD, YOU MUST PURCHASE SEVERAL ADMINISTRATOR LICENSES.

b) O&O BlueCon XXL Administrator's Suite – Consultant license

You are permitted to install and use the software product on one single computer. A consultant (licensee) may use the bootable data medium for system rescue (O&O BlueCon-Boot-CD) that can be created by using the software product on any appropriate computer. A licensed full version on the target computer is not required. IMPORTANT: THIS LICENSE IS BOUND TO A NATURAL PERSON (CONSULTANT). IF DIFFERENT CONSULTANTS ARE TO USE THE O&O BLUECON BOOT-CD, YOU MUST PURCHASE SEVERAL CONSULTANT LICENSES.

c) O&O BlueCon V4 XXL Administrator's Suite – Test license

You are permitted to install and use the software product for evaluation purposes without charge for an unlimited period. Provided that you verify that you are distributing the read-only version, you are licensed to make as many copies of the read-only version of this software product and documentation as you wish; give exact copies of the original trial version to anyone; and distribute the read-only version of the software and documentation in its unmodified form via electronic means. There is no charge for any of the above.

You are specifically prohibited from charging, or requesting donations, for any such copies, however made; and from distributing the software and/or documentation with other products (commercial or otherwise) without prior written permission by O&O Software GmbH.

Backup copies: You are also entitled to produce copies of the software product required for backup and archiving purposes.

3. Special restrictions

The licensee is prohibited from:

- a) entrusting the software or the accompanying written material with a third party, or making it accessible for him/her without written approval from O&O,
- b) transferring the software from one computer to another via a network or data transferring channel,
- c) altering, translating, deconstructing the development, decompiling or disassembling the software without former written permission from O&O,
- d) producing works resembling the software or duplicating written material, from translating or altering the program or creating versions of written material

4. Rights of Ownership

With the purchase of this product, you are only entitled to the possession of the physical software data medium on which the software is recorded. This does not include the acquisition of rights to the software itself. O&O reserve the right to publicize, reproduce, alter or exploit the software.

5. Reproduction

The software and accompanying written manual is protected by copyright. If the software does not include copy protection, its reproduction is only permitted when for security purposes. You are obliged to include the O&O copyright annotation with the security copy. No copyright statement or included registration number from the software may be removed. The copy or reproduction of the software and its written accompaniment is strictly forbidden, be this in whole or part, in original or changed form, merged together with or enclosed in other software.

6. Transference of right to use

The right to use the software can only be passed on to a third party with written consent from O&O and in accordance with the terms of this agreement. Giving the software away, hiring or lending it out is strictly forbidden.

7. Agreement validity

This agreement is valid indefinitely. Should the licensee violate a condition of the agreement, his/her right to use the software automatically lapses without prior notice. On the termination of the right to use (s)he is obliged to destroy the original data medium as well as the copies (including those modified) of the software and written material.

8. Recovery of damages to the agreement

O&O point out that you will be held liable for any violation of the copyright terms.

9. Updates

O&O are entitled to update software at their own discretion. They are not obliged to make program updates available to those licensees who have either not signed the registration card sent back to O&O, or not paid the update fee.

10. O&O guarantee and liability

a) O&O ensures the original licensee that the data carrier, which the software is recorded on, and the accompanying hardware are free from defects when subject to normal operating conditions and looked after throughout performance.

b) Should the data medium be faulty, the acquirer can demand compensation delivery as long as the guarantee is valid (up to 24 months following delivery). For this, the data medium must be returned to either O&O or the dealer it was bought from, along with its possibility accompanying hardware, the security copy, written material and duplicate of the receipt/bill.

c) If a fault, as defined in 10b, is not made good by replacement delivery within a reasonable length of time, the customer can either demand a reduction: the purchase price, or contract rescission.

d) For the reasons mentioned above and in paragraph 1, O&O do not assume liability for errors made by the software. Above all O&O take no responsibility for the software being sufficient for the acquirer's demands and purposes, or for it working with other programs chosen by her/himself. The purchaser alone carries responsibility for the consequences of using the software, as well as for intended or achieved results. The same applies to written material accompanying the software. If the software cannot be used as defined in note 1 the purchaser has the right to countermand the agreement. O&O have the same right when the software serviceable, as defined in note 1, cannot be manufactured at affordable cost.

e) O&O is not liable for damage unless it is caused with intent or by gross negligence on their part. Liability for gross negligence is impossible for merchants. Liability for possible guaranteed features of O&O is not affected. Liability for damage caused by defects not covered by the guarantee is not possible.

11. Competency

When the licensee is a qualified merchant, the law concerned in this agreement applies to the Federal Republic of Germany. Be this the case, the competency of the regional and federal courts in Germany is understood.

In the event of queries about the O&O-Software license agreement, or if you would like to talk with O&O, please contact O&O Software GmbH.