



 O&O BlueCon 7

O&O BlueCon 7
Rev. 2007-11-16

© 1999-2007
O&O Software GmbH • Am Borsigturm 48 • 13507 Berlin • Germany

Text, illustrations and examples have been produced with great care. The editor is neither legally nor in any other way liable for incorrect information given and its possible consequences.

This document is protected by copyright. All rights reserved. Without written approval no part of this document may be reproduced through photocopying, microfilming or any other procedure, nor may it be translated into a language used by machines, especially data-processing plants. Rights are likewise reserved for quotation in lectures, on radio and television.

Microsoft, Windows, Windows NT, Windows 2000, Windows XP, Windows Vista and Windows 2003 are registered trademarks of Microsoft Corporation, Redmond, USA. O&O and the O&O-logo are registered trademarks of the O&O Software GmbH, Berlin

Table of Contents

About O&O BlueCon 7	1
Welcome to O&O BlueCon 7!	1
General Definitions	1
The O&O BlueCon CD	1
Drive	1
System Requirements	2
O&O BlueCon Tools	2
The O&O BlueCon 7 Concept	3
Common Applications	5
Problem 1: Forgotten password	5
Problem 2: Backup data externally	5
Problem 3: Restore the system	6
Problem 4: Completely delete data	6
Problem 5: Reconstruct deleted data	7
Getting Started	8
Start the O&O BlueCon CD	8
Load Drivers	10
Start programs in O&O BlueCon	11
Close O&O BlueCon	12
O&O FileExplorer	13
Introduction	13
Search for files and directories	13
Copy, move or delete files and directories	14
Build a network drive connection	14
View Drive/file properties and NTFS access permissions	14
O&O DeviceManager	15
Introduction	15
Driver Manager	15
Service Management	16
O&O CheckDisk	17
Introduction	17
O&O CheckDisk Wizard	17
O&O SRP-Manager	19
Introduction	19
O&O Wizard for System Restoration	20
O&O EventViewer	22
Functions	22
Application protocol	22
Security protocol	23

System protocol	23
Protocol features	23
Update protocols	23
Delete event list	24
O&O RegEditor	25
Introduction	25
Important information regarding O&O RegEdit	26
Create new keys with values	27
Browse the Registry Database	27
Change values	27
Manage rights	27
Export keys with values as*.reg files	27
Import keys with values as*.reg files	27
O&O UserManager	29
Introduction	29
Change user accounts (i.e. passwords, names, properties)	29
Create new user	30
Create new user group	31
O&O DiskManager	32
Functions	32
Delete a Drive	32
Create a new Drive	33
Recognize new Volumes	33
Display Properties	33
Rename a Drive	33
Format a Drive	33
O&O Prompt	34
Introduction	34
Batch processing	34
Command Index	35
O&O SystemInfo	46
Introduction	46
Edit system parameters	47
Deactivate system parameters	47
Delete system parameters	47
Control Panel	48
Functions	48
WebBrowser	49
Functions	49
O&O Notepad	50
Functions	50

O&O Calc	51
Functions	51
O&O Data Recovery Suite	52
Introduction	52
Differences between O&O DiskRecovery, O&O FormatRecovery, and O&O UnErase	52
Starting the programs in Windows	53
About O&O UnErase	53
Main View	54
Searching for Deleted Files and Folders	56
Canceling a Search	57
Deleted Files and Folder Designations	57
Restoring Files and Folders	57
Advanced Searches	58
About O&O FormatRecovery	60
Main View	61
Selecting a Drive	61
Data Recovery Settings	62
Additional Recovery Settings	63
Running and Interrupting a Scan	64
Selecting Files for Restoration	64
Selecting a Target Folder	65
Creating a Report	66
Saving Files	66
Completing the Data Recovery	66
About O&O DiskRecovery	66
Starting O&O DiskRecovery	67
Selecting a Drive	67
O&O DiskRecovery Scan Settings	68
Running and Interrupting a Scan	69
Selecting Files for Restoration	70
Selecting a Target Folder	72
Saving Files	72
Completing the Data Recovery	73
About O&O SafeErase	74
Introduction	74
Important Note before Program Use	74
The O&O SafeErase Wizard	75
Securely Erasing Files and Folders	75
Securely Erasing a Hard Disk Partition	76
Retrospective secure deletion of already deleted data	76
Testing Whether O&O SafeErase Really Deleted All the Data	76
Setting the Deletion Method	76
Highest Security (35 Cycles)	77
High Security (7 Cycles)	77
Moderate Security (6 Cycles)	78
Low Security (3 Cycles)	78
Lowest Security (1 Cycle)	78

About O&O DiskImage	79
Introduction	79
General Terms and Definitions	80
Image	80
Image File	80
Incremental Image	80
Base Image	80
Create an Image	81
Carry out an Incremental Imaging	83
Copy a Drive	83
Restore an Image	84
O&O Support and Contact	86
Software License Agreement	87

About O&O BlueCon

Welcome to O&O BlueCon 7!

Thank you for putting your trust in our software. We are very pleased to introduce you to O&O BlueCon.

O&O BlueCon empowers users, administrators and service technicians with a new collection of high-power tools to repair damaged Windows-based systems without reinstalling the operating system software. The user interface is meant to give the look and feel similar to that of Windows, making O&O BlueCon easier to use than ever.

The following chapters will give you an overview of how best to use O&O BlueCon and guide you through the first steps with this software.

We hope you enjoy using O&O BlueCon. Should you have any questions regarding our products or licensing, please do not hesitate to contact us. We look forward to assisting you.

Your O&O Software Team
www.oo-software.com

General Definitions

The O&O BlueCon CD

The O&O BlueCon CD is a bootable CD, from which all programs can be launched. For this reason, it is not necessary to first run a Windows installation before using O&O BlueCon on your computer.

The O&O BlueCon CD is based on Windows PE, or Windows Preinstallation Environment.

Drive

A drive is a reserved area on a hard disk. There can be several drives on a hard disk. The term "Drive" will be used here to define single partitions as well as logical drives on advanced partitions.

System Requirements

- System with an Intel® Pentium III or equivalent processor
- 512 MB RAM is required for the basic O&O BlueCon functionality. For using the advanced functions, e.g. the O&O data recovery products, we recommend 1 GB RAM.
- Bootable CD or DVD drive
- VGA graphics card with 800x600 resolution at 256 colors
- Keyboard and Mouse
- Windows Operating System: Windows Vista/XP/2003/2000
- Windows File System: FAT12/FAT16/FAT32/NTFS4/NTFS5



Note:

To use the O&O BlueCon CD, your computer must have a CD/DVD drive. It may be necessary to make changes to your computer's BIOS settings. More information can be found by consulting the documentation from your motherboard's manufacturer.

O&O BlueCon Tools

O&O BlueCon 7 consists of the following high-power programs:

- NEW: O&O DiskManager: Manages your disk: For example, you can load new drives and delete or rename existing drives.
- NEW: O&O SafeErase 3: Securely delete data. Now even easier to use thanks to the new O&O SafeErase Wizard.
- NEW: O&O DiskImage 2 (only with O&O BlueCon 7 Tech Edition): Backup data with just a few mouse clicks!
- NEW: Full support for Microsoft Windows Vista Operating System.
- O&O FileExplorer: Find files and directories. Copy or move items to external storage media.
- O&O DeviceManager: Disable or enable drivers and services.
- O&O CheckDisk: Run a diagnostic of the data and structural integrity of connected drives.
- O&O SRPManager: Restore the system to a previous functioning condition.
- O&O EventViewer: View all system event logs.
- O&O RegEditor: Access the Windows Registry Database.
- O&O UserManager: Manage local user accounts.
- O&O Prompt: Operate the software through command-line-based input.
- O&O SystemInfo: View your system's parameters.
- Control Panel: Activate a network connection or select an operating system.
- O&O Notepad: View and Edit text files.
- O&O Calc: Calculate basic mathematical operations and perform conversions between common number system.
- FireFox® Web Browser: Access internet-based content.*

Additional integration of the following data rescue products:

- O&O DiskRecovery 4
- O&O FormatRecovery 4
- O&O UnErase 4



***Note:**

To use the Web Browser, it is necessary to be connected to a Local Area Network (LAN) with access to the internet.

The O&O BlueCon 7 Concept

A total Windows system crash is every administrators worst nightmare. If a new start or restoring the old settings doesn't help then it is mostly too late. Endless hours spent resetting the computer or recovering data can drive one to despair. But not anymore! O&O BlueCon provides a whole range of refined tools for solving problems. With our program you can repair broken-down Windows installations, rescue data lost through error or virus attack, change a forgotten password and much, much more. A particular highlight is the ability to start O&O BlueCon from CD ROM with no prior installation. This enables you to access systems that cannot be started anymore from the hard disk. This prevents data being damaged by additional or new installations of Windows.

There are many situations in which O&O BlueCon can help you. We have listed the most common for you here to give you an idea of O&O BlueCon's performance range:

- **Windows-based interface** – With O&O BlueCon the user has a task bar, Start menu and all appropriate program buttons at their disposal. This enables access without entering command lines and with just a few simple mouse clicks. Navigation, like in Windows, is also with the mouse. For execution, editing or creation of basic files users have a command-line editor at their fingertips.
- **Rescue crashed Windows installations** - O&O BlueCon helps you get to the root of the problem. With the O&O SRPManager you can recover your old Windows Vista/XP system. You can scan for defective drivers or system services in the smallest detail and restore them to their previous condition. (see O&O SRPManager)
- **Backup data from defective systems** – Copy data from defective systems to external storage media. You can access your system without having to write to it – this gives you the security of knowing no data will be lost. Simply start the O&O BlueCon CD and access all partitions! (see O&O FileExplorer)
- **Deactivate defective drivers and system services** – Amongst the most common causes of a system crash are defective drivers or system services. These are loaded before the user can log on, giving them no opportunity to remove or replace them. With O&O BlueCon you can simply deactivate the driver or service, or replace them with a new version! (see O&O DeviceManager)
- **Edit the Registry** – The registry is the central filing system for all systems and user settings. Any errors here can prevent your system from running correctly. False driver or service parameters can also cause severe problems. The O&O RegEditor enables you to change or correct entries in the registry. (see O&O RegEditor)
- **Gain access without an administrator password** – You cannot log on to your Windows system without a password. If you forget or lose this password you have to install Windows anew in order to gain system access. O&O BlueCon provides you with a tool to delete or change passwords for local user accounts so that they can access their systems again. (see O&O UserManager)

- **Securely delete data** – With O&O BlueCon you can delete data, partitions, harddisks or entire systems beyond any chance of recovery using the technology of O&O SafeErase. Using five different methods of deletion it is possible to overwrite data up to 35 times! (see O&O ComandPrompt/Safeerase)
- **Data recovery with the O&O RescueBox 4 included** - O&O BlueCon 7 contains the complete O&O data recovery portfolio consisting of: O&O DiskRecovery, O&O Format-Recovery and O&O UnErase. This enables a data recovery in almost every software related data loss situation, be that through formatted storage media, loss through error or virus attack. With the O&O product line, data recovery was never so easy, quick and affordable.
- **Data Backup with O&O DiskImage** (only with O&O BlueCon 7 Tech Edition): You can start O&O DiskImage without installation direct from the O&O BlueCon CD and backup single partitions or an entire system. You can also use the incremental Image method to save only the changes made since the last image. This saves you both time and system performance.
- **and much, much more ...**

Common Applications

Problem 1: Forgotten password

A user has forgotten his password, and cannot log on anymore. You as administrator are asked to help.

Solution:

1. Start O&O BlueCon.
2. Open the O&O UserManager by navigating to **UserManager** under **Start/Programs/AdministrativeTools**.
3. Click on the **Switches to User Accounts View** icon in the toolbar.
4. Choose the user who has forgotten their password from the list.
5. Click on **Change Password** and follow the instructions in the pop-up window.
6. Close O&O BlueCon. Once the computer is restarted the user can log on using his new password.

Important:

- If you have changed passwords with O&O BlueCon, you will have **no further access** to encrypted data. The coding cannot be deciphered after a password change!

Note:

It is **not** possible to decipher used passwords. You can however change passwords, even when you do not know what the password is. This is recommended when, for example, a user has forgotten their password.

Problem 2: Backup data externally

You urgently require data from your system. Right at this moment your system crashes and will not restart. Because you don't know the cause, the very least you wish to do is restore the data to an external storage medium.

Solution:

1. Connect an external storage medium, i.e. USB or hard drive to your computer.
2. Start the O&O BlueCon CD.
3. Open the **O&O FileExplorer** by selecting **FileExplorer** under **Start/Programs**.
4. Browse the hard disk for files or directories.
5. Copy the data to the external storage medium.

Note:

External storage media must be connected to the computer before O&O BlueCon is started, otherwise the system will not recognize them.

Problem 3: Restore the system

You have installed a new program, for example a driver. Your system crashes immediately afterwards and will not restart.

Solution:

1. Start O&O BlueCon.
2. Open **O&O SRP-Manger** by selecting SRP-Manager under **Start/Programs/System-Recovery**. O&O SRP-Manager is recommended in cases where numerous programs are simultaneously responsible for a system error, or you are unable to clearly identify the defective program. An alternative solution for problems with drivers would be to use the O&O DeviceManager.
3. Take a look at the saved SRP and restore your system to the stage just before you installed the program.
4. The files are now "unregistered". The SRP-Manager is by design unable to delete files that were produced after the creation of a restoration point. This includes program files (e.g. drivers). Restoring to a SRP with O&O BlueCon simply undoes changes made to the Registry database since the SRP's date of creation. In doing so, for instance, a defective driver hindering successful system startups will no longer be loaded at the next system startup.
5. After cleansing the Registry database using O&O BlueCon and enabling a normal system startup, it is then possible to run the system restoration function in Windows.
6. Restoring to the same SRP in Windows will lead to the deletion of the defective or changed files left behind by O&O BlueCon.



Note:

The O&O Wizard for System Restoration only functions when your target system is running Windows XP. SRPs will not be detected on systems running other operating systems.



Note:

If a SRP is listed as <linked>, it is linked to a SRP of the same name. You can choose whether you would like to restore both SRPs or just one.

Problem 4: Completely delete data

Moving files to the Recycle Bin and subsequently emptying it does not delete data from the hard disk. If you want to delete data from your computer securely and beyond further recovery, than you need to use the O&O SafeErase Wizard.

Solution:

1. Start O&O BlueCon.
2. Open O&O SafeErase.
3. Select the required task in O&O SafeErase Wizard and follow the instructions in the popup window.

Problem 5: Reconstruct deleted data

A user has inadvertently deleted a very important folder. He also emptied the Recycle Bin shortly afterwards. Because he needs the data urgently it must be quickly recovered.

Solution:

1. Start O&O BlueCon.
2. Open **O&O UnErase** under **Start/Programs/FileRecovery**.
3. Select the drive where you wish to recover data from. Click on the main display to select it.
4. Select from the file menu the command **Search** for deleted files. If the target files can be located then they will appear in the file list on the right hand side marked with a red arrow.
5. Select the file and then choose the option from the file menu entitled **Restore**.
6. Choose a target directory. This may not be on the same drive as the one you are making the recovery from.
7. After completion of the recovery you can open the file in the target directory.

Getting Started

Start the O&O BlueCon CD

Make sure that your system can be started from the CD. The appropriate settings can be carried out in BIOS: For further information, please contact your Motherboard manufacturer.

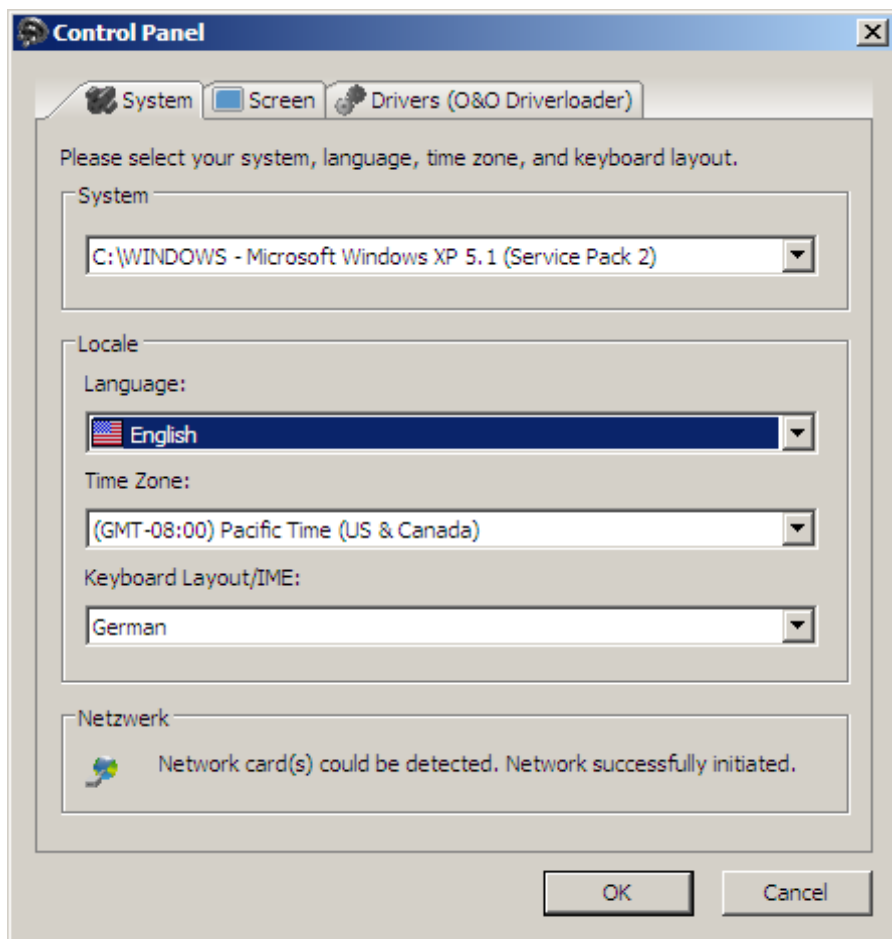
1. Place the O&O BlueCon CD in your computers CD/DVD drive.
2. Start the computer anew.
3. Follow the instructions for starting the CD. O&O BlueCon will start from the CD. This procedure can take a few minutes. At this stage the Network Connection is initialized. If a network connection cannot be initialized, it means your network card is not supported.




Press any key to boot from CD or DVD.._

Instructions for starting O&O BlueCon

4. The system settings will subsequently appear in the window. Select from the menu **System** your target system. This selection is particularly important when several operating systems are installed on the computer.



System Settings

 **Note:**
O&O BlueCon and the programs contained in it will only apply themselves to the target system that you have selected!

Should no system be displayed, it will default to Windows PE.

You can then further select language, time, country and keyboard layout.

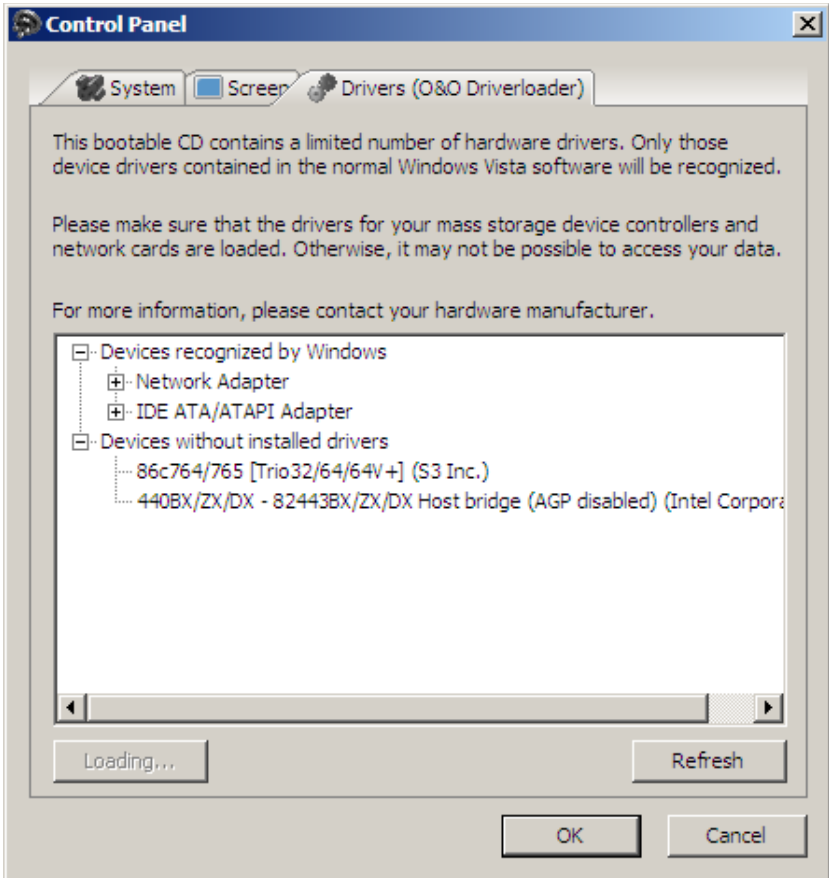
Load Drivers

In order that O&O BlueCon can recognize every connected hard disk, drivers can be installed before starting O&O BlueCon. Where PE could still not find drivers for certain devices, you can load them under the section Drivers. That also applies to network card drivers



Note:

Under certain circumstances you may receive a message requiring you to re-start if you have loaded an additional driver under Windows PE. This message is automatically generated by Windows PE but is irrelevant when starting from CD. Simply decline the request and follow the next instructions in the pop-up window.



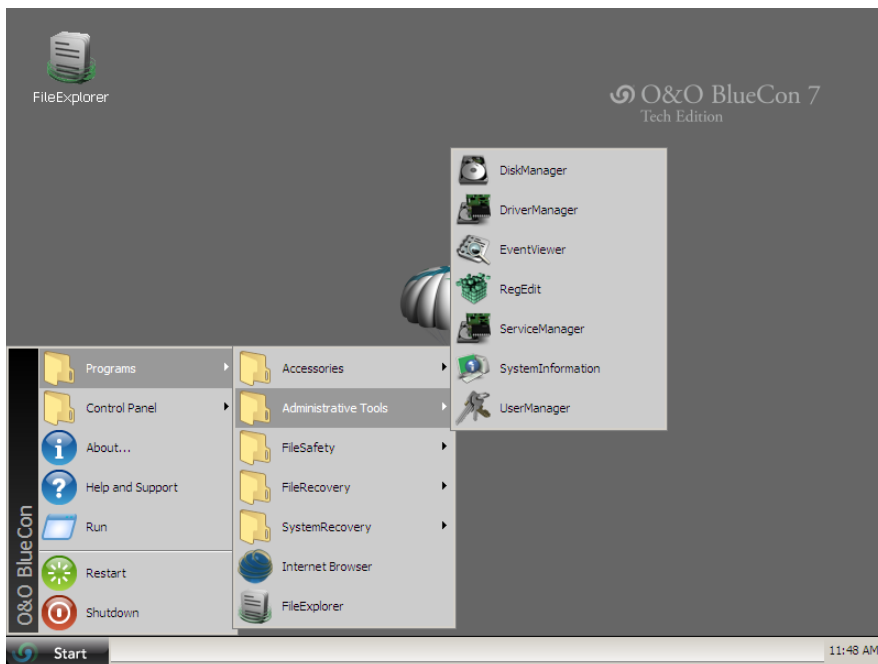
Load Drivers

After confirming licence terms and conditions, O&O BlueCon will start.

Note:
O&O BlueCon does not support encrypted drives!

Start programs in O&O BlueCon

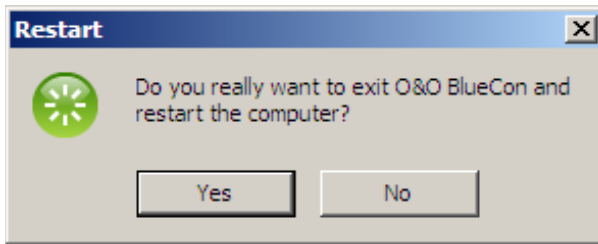
Click on the Start bottom left and then start a program from the O&O BlueCon Start menu. You can also access online help by clicking on Help and Support in the Start menu.



O&O BlueCon user interface

Close O&O BlueCon

To close O&O BlueCon, click on **Start** and select **Restart**. After confirming the command O&O BlueCon will close down and your computer will restart.



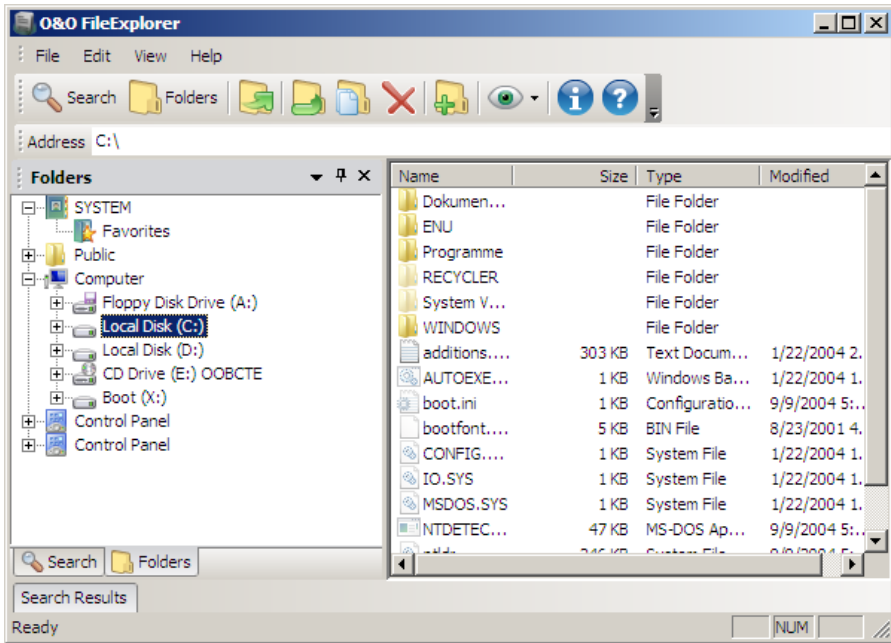
Restart your Computer

O&O FileExplorer

Introduction

If your system is damaged you have practically no chance of accessing your files in order to back them up. The O&O FileExplorer in O&O BlueCon 7 enables you to navigate through your computers entire file system.

- To open the O&O FileExplorer click on **Start/Programs** and then **FileExplorer**.



O&O FileExplorer

Search for files and directories

1. Click on the **Search** in the menu.
2. Enter the required file or directory name. You can refine your search by entering further search criteria in the search menu.

Copy, move or delete files and directories

Files and directories can be copied, moved or deleted through the context menu. Alternatively you can also use the appropriate instructions in the Toolbar.



Note:

If you wish to copy or move files to external storage media, these must be connected when you start the computer. Media connected after the start will not be recognized by the system.

Build a network drive connection

A special feature of the O&O FileExplorer is the direct connection of network drives to other servers.

1. In the file menu on **O&O FileExplorer**, click on **Network Drive Connection**.
2. A free drive-letter will be selected and you can enable the UNC Path.
3. A field will appear for registering on the target system, for which you will need an account.

O&O FileExplorer does not offer a separation of network drives. This is rarely needed, but can be done using the Windows PE Program **NET USE <Drive>: /DELETE**.

View Drive/file properties and NTFS access permissions

Permissions

To view access permissions, select Permissions from either the file menus or respective context menu.

File Properties

File properties can be managed over the context menu. File information can be read, file attributes changed or NTFS rights managed.



Warning:

- Removing NTFS Rights can prevent access to files. It is not possible to retrospectively add NTFS Rights under O&O BlueCon.

Drive Properties

Under Drive **Properties** you can find information regarding capacity as a whole as well as on free and occupied drive capacity.

O&O DeviceManager

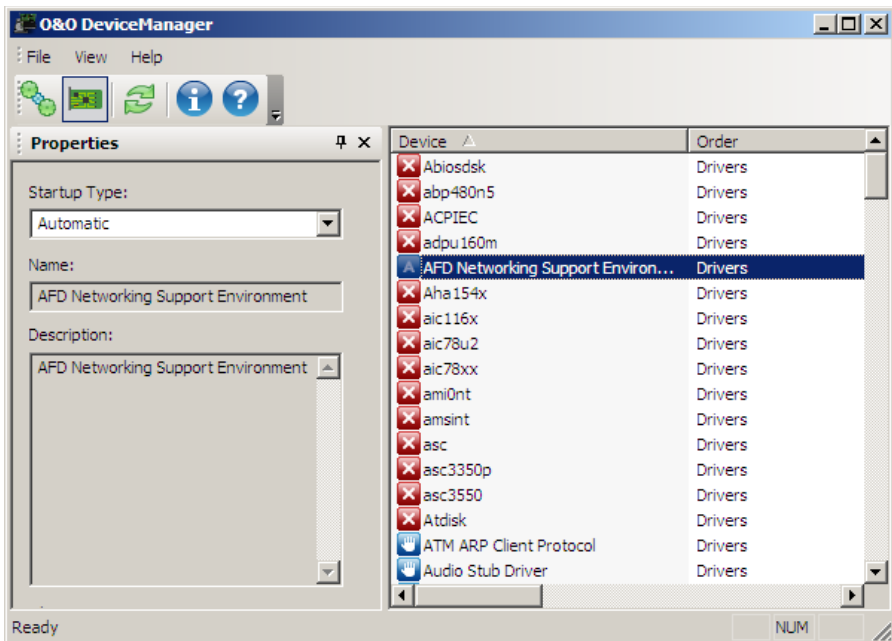
Introduction

The O&O DeviceManager provides the best possible overview of the installed hardware. This program consists of two functions:

- Driver Management: To open the Driver Management function in the O&O Device-Management, click on **Start/Programs/AdministrativeTools** and then DriverManager.
- Service Management: To open the Service Management function in the O&O Device-Management, click on **Start/Programs/AdministrativeTools** and then ServiceManager.

Driver Manager

The DriverManager in the O&O DeviceManager can control the startup settings of hard and software drivers. This function is particularly helpful when defective drivers are affecting system starts.

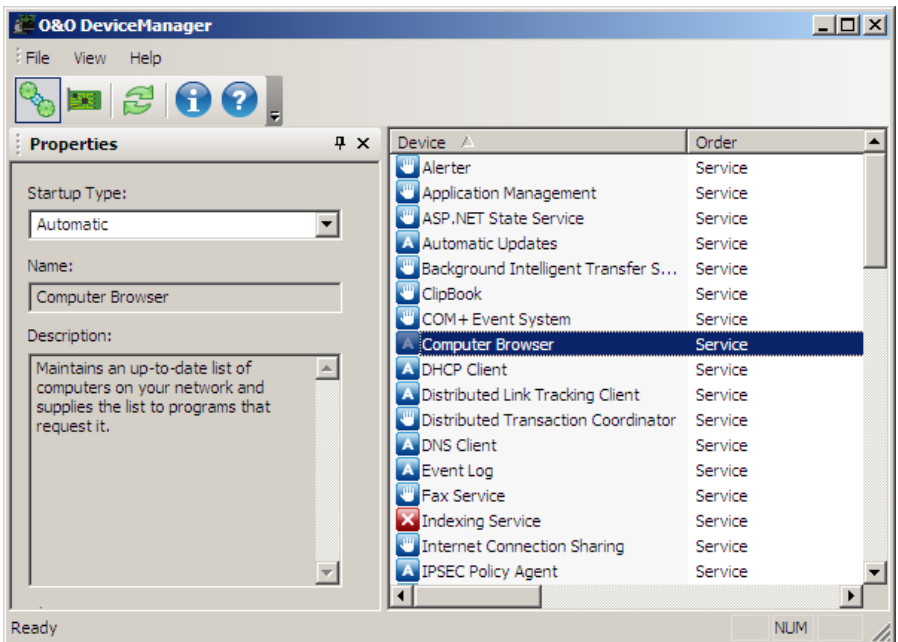


Driver Manager

1. Select the **Drivers** icon.
2. You can now highlight a driver from the list. There are various options available to determine the settings of each respective driver.
 - Disabled: Sets the startup type to Disabled. The driver will not be loaded. To disable a driver, select disabled from the Startup Type menu.
 - Boot: Sets the startup type to Boot. The device starts before all others. The driver is loaded and started whilst Windows boots up.
 - System: Sets the startup type to System. The device starts after all boot devices have been started. The driver will be started by the system at a defined time. This does not necessarily have to be during the system startup.
 - Auto: Sets the startup type to Automatic. The device starts only after all boot and system devices have been started.
 - Manual: Sets the startup type to Manual. The device will not start. The user can start it up manually after logging on.

Service Management

You can find Services next to the Driver Management icon in the toolbar. The Service Management function in the O&O DeviceManager can customize the startup type of Windows services. This means defective or superfluous services can be disabled and thus enabling a system start again. Proceed in the same way as with Driver Management.



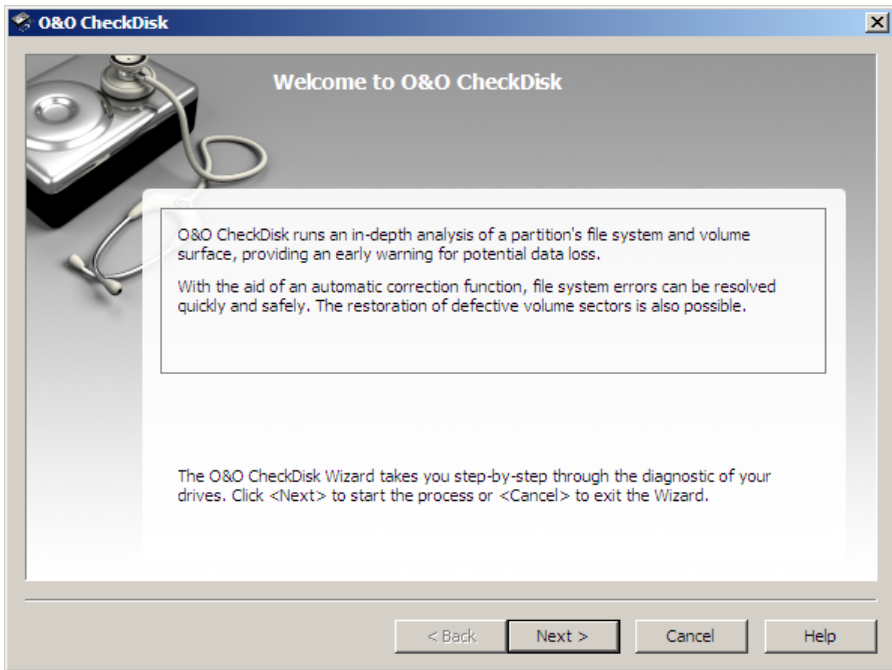
Service Management

O&O CheckDisk

Introduction

O&O CheckDisk makes an exhaustive check of the file system and the storage medium interface and by doing so protects them against possible loss of data.

To open O&O CheckDisk, click on **Start/Programs/SystemRecovery** and then **CheckDisk**.



O&O Checkdisk

O&O CheckDisk Wizard

O&O CheckDisk is a Wizard that guides you step-by-step through the monitoring of your drives.

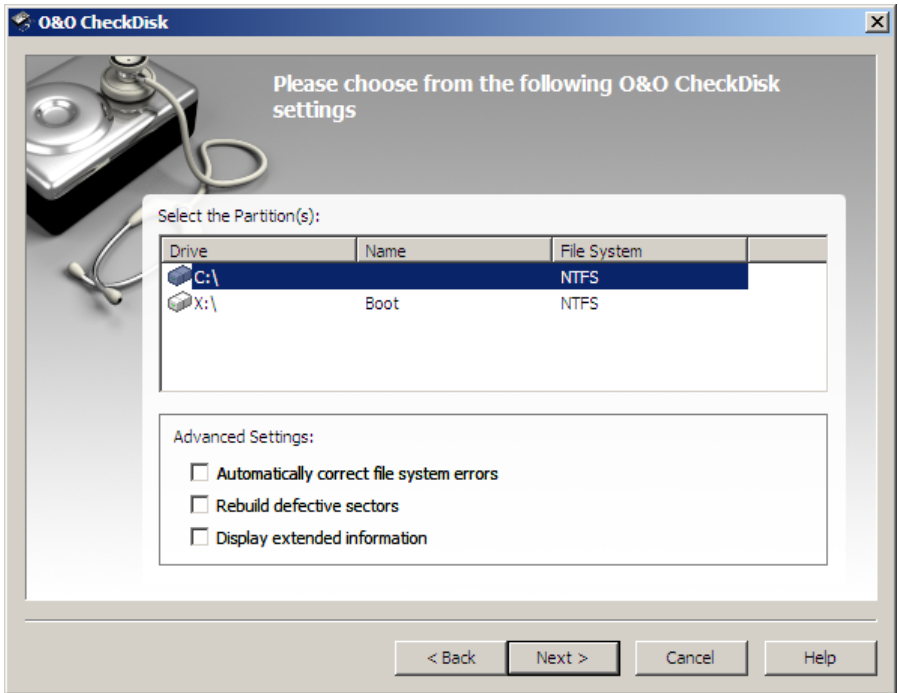
1. After starting O&O CheckDisk click on **Next**.
2. In the second stage, select the drive you wish to analyze.

You will have available the following options:

- **Automatically correct file system errors** – This carries out an automatic error correction. File system errors are remedied quickly and easily.
- **Rebuild defective sectors** – With this function O&O CheckDisk checks your disk for damaged sectors and then moves them to intact sectors.
- **Display extended information**

Should you not choose an option a protocol of the analysis will be created.

In the next stage the analysis will be carried out. While O&O CheckDisk is going to work, you can monitor the progress on two progress bars. All program messages will appear in the window.



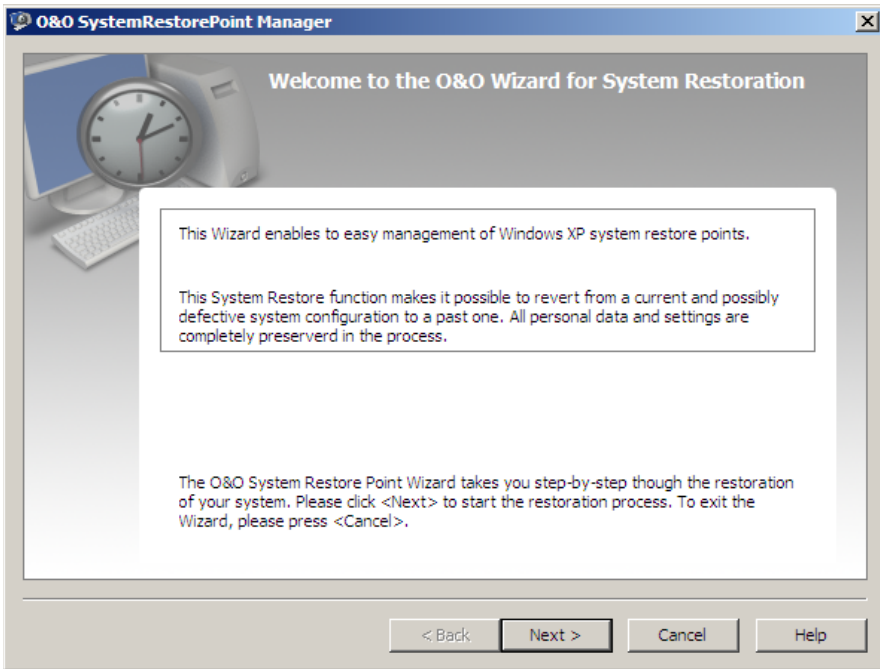
Select a Drive

O&O SRP-Manager

Introduction

O&O SRP-Manager allows for the easy access, management and restoration of Windows System Restore Points (SRP). SRPs enable you to revert back to previously saved system configuration, even when the system is damaged or Windows will not start. Restoring SRPs makes changes to system-related files only. Personal files and directories, such as text files, photos or passwords remain completely preserved.

- To open the O&O SRP-Manager, click **Start/Programs/SystemRecovery** and then **SRP-Manager**.



O&O SRP Wizard for System Restoration

Note:

The O&O Wizard for System Restoration only functions when your target system is running Windows XP. SRPs will not be detected on systems running other operating systems.

Information regarding system restoration from Windows: Windows system restoration monitors system changes and automatically creates system restore points. System restore points are points whereby the condition of your computer is stored. They enable you to restore your system to a previous state. As a rule, Windows creates system restore points daily, automatically and when important system events occur, e.g. when a driver is installed. You too can create and name your own system restore points under Windows. You can learn more under the system restoration help section in Windows.

O&O Wizard for System Restoration

The O&O SRP Wizard for System Restoration guides you step-by-step through the restoration of your system.

1. Click Next to proceed to the next step.
2. Select a Restoration Mode:

With **Standard Mode** you will be required to confirm your selection once more. Your system will then be reset back to the chosen SRP.

Under **User Defined Mode** you can carry out further settings. Here it is possible to just restore files or the registry database. You can also exclude individual files in the list from the restoration.

After making your mode selection, the next step will be to select the specific SRP from list organized by date in calendar form.

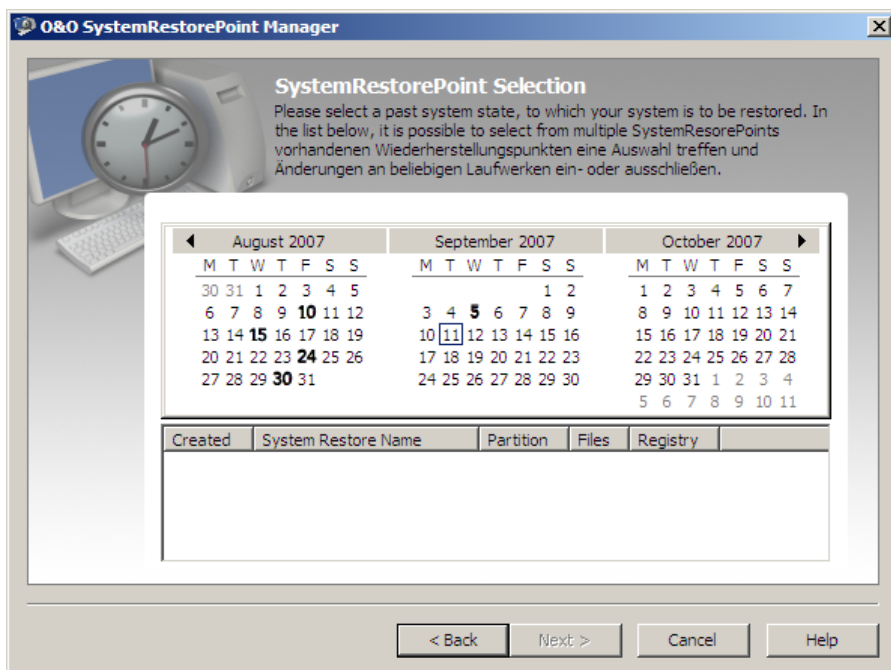
3. First, select a date. A list of available SRPs will be displayed in the bottom pane for the selected date. Those dates that appear in bold text contain SRPs.
4. Select the SRP, to which you would like to restore your system.
5. Confirm to apply your selected settings.



Note:

If a SRP is listed as <linked>, it is linked to a SRP of the same name. You can choose whether you would like to restore both SRPs or just one.

The O&O SRPManager is not designed to delete files created since the creation of a restore point. This includes program files (e.g. drivers). The O&O SRPManager simply undoes the registry in the registry database. This manifests itself whereby a defective driver that prevents a system start will not be loaded at the next start procedure. By cleaning up the registry database, the O&O SRPManager enables you to again use the system restoration integrated in Windows. By the renewed use of the system restore points, you can also delete those files left behind.



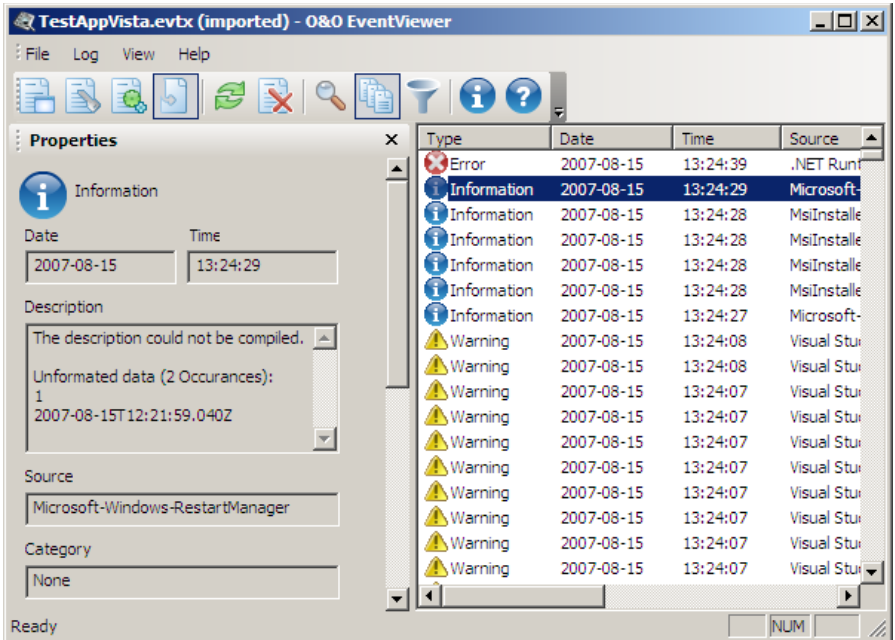
O&O SRPManager, Calendar

O&O EventViewer

Functions

The O&O EventViewer allows you to identify error sources and problems. The O&O EventViewer itemizes all events that are logged by the system and applications. The events can be managed in application, security and system protocols.

- To open O&O EventViewer, click on **Start/Programs/AdministrativeTools** and then **EventViewer**.



O&O EventViewer

Application protocol

The application protocol contains events from applications or programs, i.e. file errors.

Security protocol

The security protocol contains events such as valid and invalid log-in attempts, as well as resource usage events, e.g. creation, opening or deletion of files.

System protocol

The system protocol contains events that are logged by the Windows system components, for example failed driver installations.

Protocol features

Information	Definition
Date	Date the event occurred.
Time	Time the event occurred
Description	Description of event.
Source	The software that protocols the event is named as the source. It can be an application name or a system/program component, i.e. a driver name.
Category	Events are categorized according to source.
Event ID	The number which represents the respective event type. The first number of the description normally contains the event type name. The event ID and source assist service technicians in solving problems.
User	Name of the user where the event occurred.
Computer	Name of the computer where the event occurred.

Update protocols

To keep the event list under each protocol up-to-date, click on **Refresh** in the Toolbar.

Delete event list

By hitting **Delete** in the Toolbar you can empty the event list in the respective protocol. It is only possible to delete the entire list – deleting single events is not possible.

O&O RegEditor

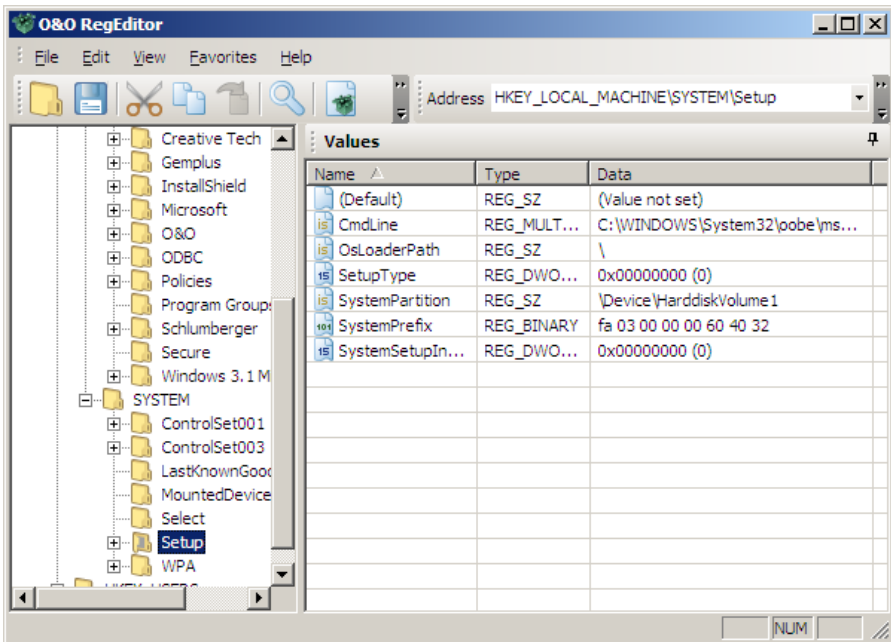
Introduction

The O&O RegEditor is similar in structure to the well-known Windows RegEdit. The O&O Reg-Editor provides full access to the Windows registry database. The settings for numerous Windows applications, drivers and services are saved here.

- To open O&O RegEditor, click on **Start/Programs/AdministrativeTools** and then RegEdit.

Warning!

- The incorrect use of O&O RegEditor can cause severe problems affecting the whole system and may necessitate reinstalling the operating system. Before making changes to the Registry database in Windows, you should make a backup copy of all important computer information with an imaging program, such as O&O DiskImage. O&O cannot guarantee that problems caused by the incorrect use of O&O RegEditor will be reparable. You accept full responsibility for using O&O RegEditor.



O&O RegEdit

Important information regarding O&O RegEdit

The correct functioning of Windows systems relies strongly on information saved in the registry database. Incorrect information in this database can cause the total crash of a Windows system.

O&O RegEditor allows for the reading and editing of the maintenance system of the registry database, even when the maintenance system is no longer operational.

Navigation is over a tree structure in the left-hand window, just as in Windows. The two main keys "HKEY_LOCAL_MACHINE" for computer-specific data and "HKEY_USERS" for user-specific data are displayed here.

In the user-specific area "HEKY_USERS", unlike in Windows, all user profiles of the maintenance system are displayed, not just the loaded user profiles.

The root Key normally found under Windows "HKEY_CURRENT_USER" does not exist as no current user is registered. You can reach these entries under "HKEY_USERS", followed by the key with the appropriate user name.

The Root Key normally found under Windows "HKEY_CLASSES_ROOT" does not exist but can be opened over the key "HKEY_LOCAL_MACHINE\SOFTWARE\CLASSES".

The root Key "HKEY_LOCAL_MACHINE\SYSTEM\CurrentControlSet" for service and driver configuration also does not exist, as the maintenance system has not loaded a current ControlSet. To reach the ControlSet, under "HKEY_LOCAL_MACHINE\SYSTEM" you can find several ControlSets (ControlSet001, ControlSet002, etc.). The current one is listed under "HKEY_LOCAL_MACHINE\SYSTEM\Select\Current". It is normally ControlSet001.

The root Key normally found under Windows "HKEY_CURRENT_CONFIG" does not exist but can be opened over the key "HKEY_LOCAL_MACHINE\SYSTEM\ControlSetXXX\Hardware Profiles\Current". XXX is listed as the value from "HKEY_LOCAL_MACHINE\SYSTEM\Select\Current".

Before changes can be made it is recommended that an Export (REG file) of the relevant key is made so that in any later import the changes can be made retrospectively. The exported REG files are compatible with the Windows REG files.

A special feature of O&O RegEditor is the direct navigation over the address line.

RegEditor also allows for the editing, adding or deleting of keys and values. All data types recognized by Windows can be processed:

REG_SZ: String
REG_DWORD: DWORD numerical value, 32 Bit long
REG_MULTI_SZ: Several Strings
REG_EXPAND_SZ: Expandable strings (environment variables are replaced)
REG_BINARY: Binary values
REG_QWORD: QWORD numerical value, 64 Bit long.

When changing values, various entry formats can be used. Figures can be entered in hexadecimal, decimal or binary formats.

Create new keys with values

1. Open **O&O RegEditor**.
2. In the file menu you will find various operations such as **New Key** or **New Value**.

Browse the Registry Database

1. Open **O&O RegEditor**.
2. Click on **Search** in the ToolBar and you have access to entries in the registry database.
3. In the search field, enter the string, value or key that you wish to search for.
4. Check the appropriate tick-box such as key, value or data.

Change values

1. Open **O&O RegEditor**.
2. Double-click in the value list on the value to be changed. An editing window will appear underneath. Here you can change the values, i.e. vary, deactivate or delete the path.

Manage rights

1. Öffnen Sie den **O&O RegEditor**.
2. Under Edit in the file menu you will see the menu item Rights. Here you can add, delete or move rights.

Export keys with values as*.reg files

1. Open **O&O RegEditor**.
2. Click in the file menu on Export.
3. Select the *.reg file you wish to export and click on Open.

Import keys with values as*.reg files

1. Open **O&O RegEditor**.
2. Click in the file menu on Import.
3. Select the *.reg file you wish to import and click on **Open**.

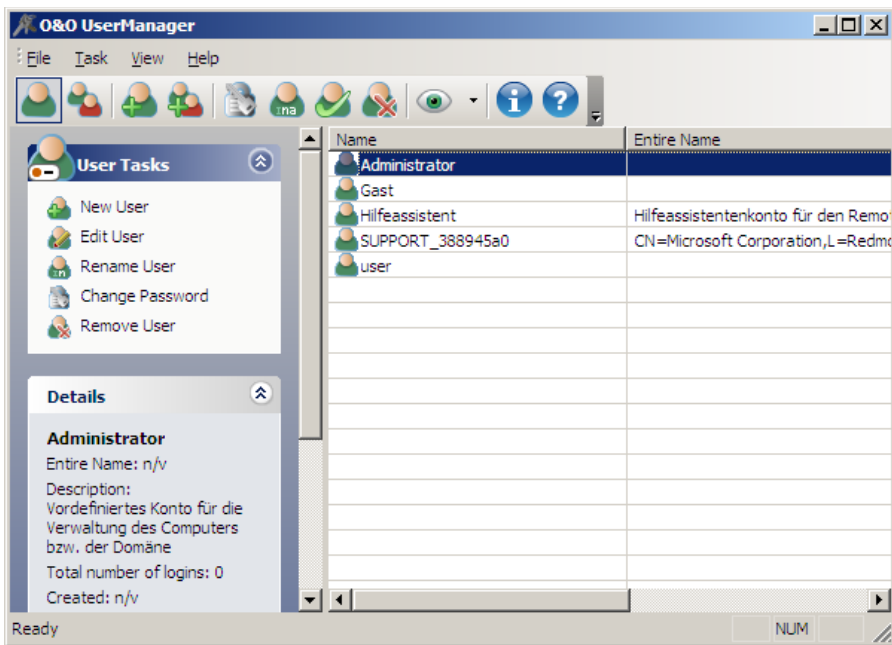
O&O UserManager

Introduction

The O&O UserManager lets you control the local user management of your Windows systems.

- To open the O&O UserManager, click on Start/Programs/AdministrativeTools and then UserManager.

Note:
O&O UserManager can only manage local user accounts. No changes can be made to a domain controller.



O&O UserManager

Change user accounts (i.e. passwords, names, properties)

Click on the Switches to User Accounts View icon in the top left of the screen.

1. Select the user you wish to change from the list.
2. Then select the required modification from the User Tasks list, i.e. Change password, Rename User.

Important:

- If you have changed passwords with O&O BlueCon, you will have no further access to encrypted data. The coding cannot be deciphered after a password change!

Note:

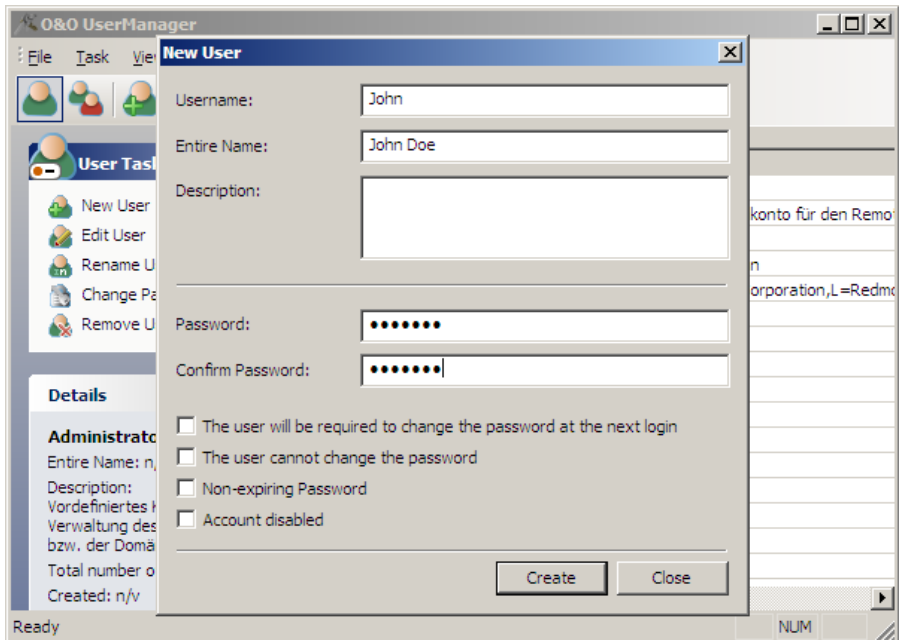
It is **not** possible to decipher used passwords. You can however change passwords, even when you do not know what the password is. This is recommended when, for example, a user has forgotten their password.

Create new user

1. Click on the Switch to User Accounts View icon in the top left of the screen.
2. In the User Tasks menu you can select New User to create a new account.
3. The new user will then appear in the list on the right.

Note:

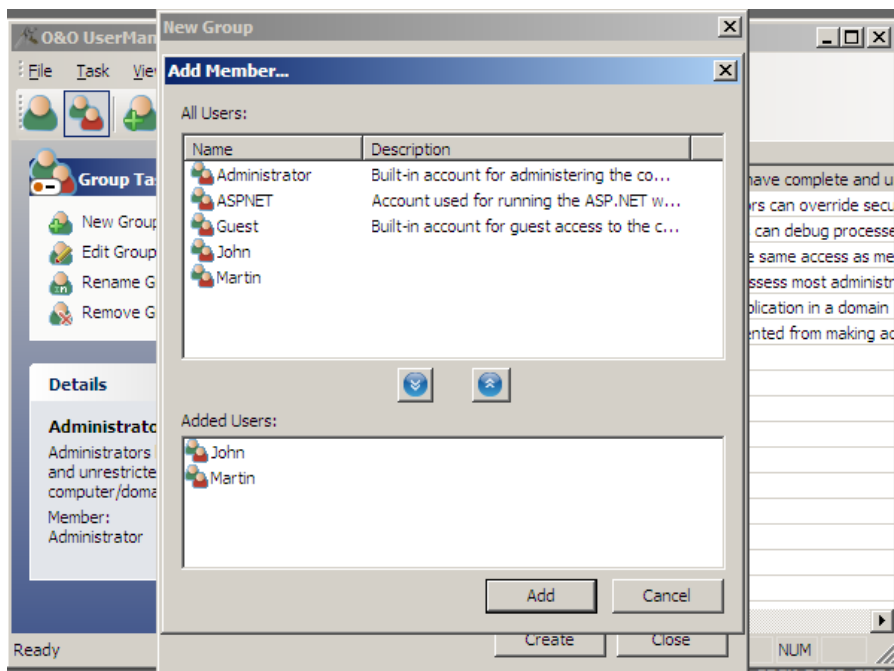
A newly created user does not by default belong to a group.



O&O UserManager: Create a new User

Create new user group

1. Click on the Switch to Group View icon in the top left of the screen.
2. In the Group Tasks menu select **New Group**.
3. You can assign users to the group under **Add**.



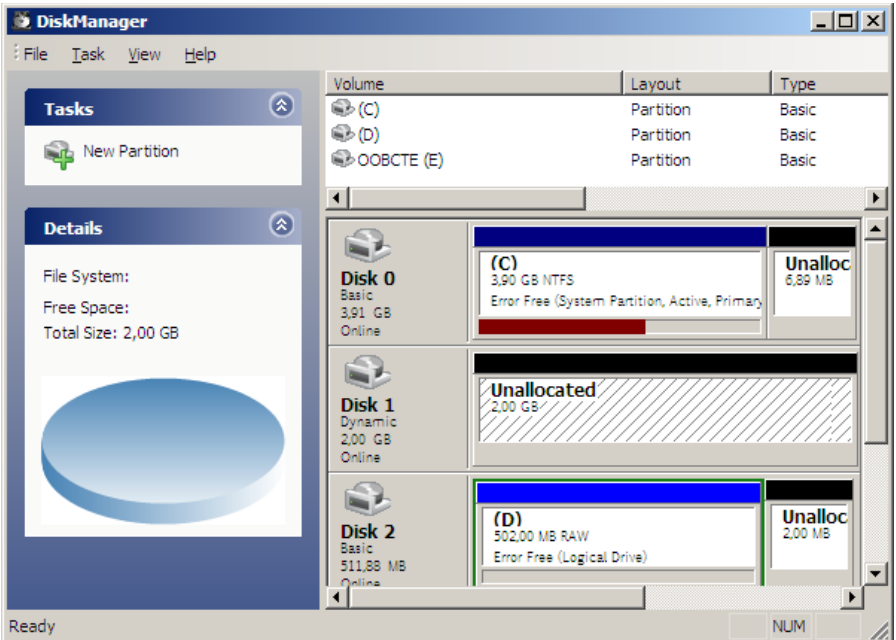
Create a new Group

O&O DiskManager

Functions

The O&O DiskManager allows you to manage your hard disks. You can load new drives, delete and rename them. As a rule you will find all options listed in the context menu of the respective drive.

- To open O&O DiskManager click on **Start/Programs/Administrative Tools** and then **O&O DiskManager**



O&O DiskManager

Delete a Drive

You can delete an existing drive either over the context menu or under Task in the menu bar.

Note:

When deleting a drive, all data on the drive is deleted. We recommend first creating a backup of the volume content, using O&O DiskImage for example.

Create a new Drive

You can create a new drive in a free area of the hard disk. The list of functions is found in the respective context menu or under **Task** in the Menu Bar. You must then format the new drive in order to save data onto it.

Recognize new Volumes

If newly connected storage volumes, e.g. USB Sticks, are not immediately recognized, you can update the volume display under **Task/Rescan Volume**.

Display Properties


You can find more information on the respective drive by clicking on it, whereby a detailed pop-up-window is displayed

Rename a Drive

You can change the description of a drive under **Change Drive Letters and Paths**.

Format a Drive

You can format selected drives either under **Format** in the context menu or under **Tasks** in the Menu bar.

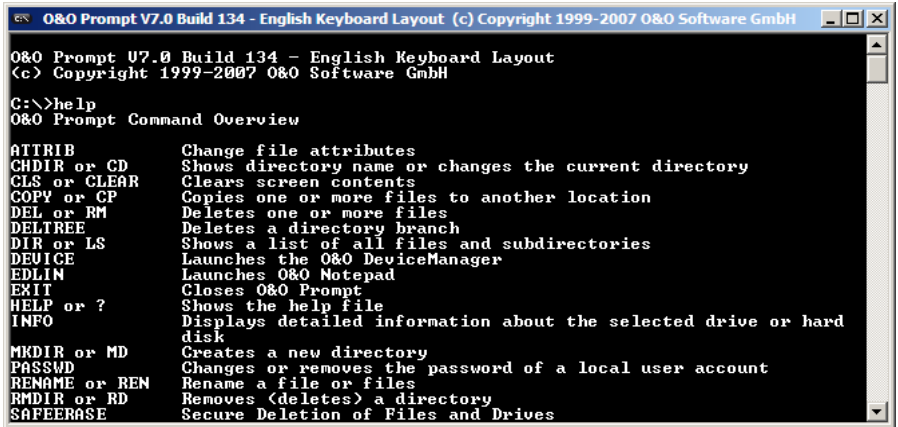
 **Note:**
Data on the drive you wish to format will be lost when formatting. We recommend first creating a backup of the volume content, using O&O DiskImage for example.

O&O Prompt

Introduction

Command-line-based input, such as the kind offered by O&O Prompt, gives you the ability to control the software through the direct entry of commands. This simplifies certain processes, not the least of which is the running of multiple commands, or Batches.

- To open the O&O Prompt, click **Start/Programs/Accessories** and then **CommandPrompt**.



```

O&O Prompt V7.0 Build 134 - English Keyboard Layout
(c) Copyright 1999-2007 O&O Software GmbH

C:\>help
O&O Prompt Command Overview

ATTRIB          Change file attributes
CHDIR or CD     Shows directory name or changes the current directory
CLS or CLEAR    Clears screen contents
COPY or CP      Copies one or more files to another location
DEL or RM       Deletes one or more files
DELTREE         Deletes a directory branch
DIR or LS       Shows a list of all files and subdirectories
DEVICE          Launches the O&O DeviceManager
EDLIN           Launches O&O Notepad
EXIT            Closes O&O Prompt
HELP or ?      Shows the help file
INFO            Displays detailed information about the selected drive or hard
                disk
MKDIR or MD     Creates a new directory
PASSWD          Changes or removes the password of a local user account
RENAME or REN   Rename a file or files
RMDIR or RD     Removes (deletes) a directory
SAFEERASE       Secure Deletion of Files and Drives

```

O&O CommandPrompt

The HELP command displays a list of all valid commands and their functions. Please note that O&O Prompt's screen automatically scrolls down when the end of the screen is reached. Many of the commands offer the option of stopping the scroll at the end of the screen and continuing when any key on the keyboard is pressed. E.g. dir /p.

A more detailed description of the commands can be found in the **Command Index** below.

Batch processing

O&O Prompt makes it easy to process batch commands. This can be very useful when you want to repeat command sequences without having to enter them one-by-one. This function is similar to the batch command function in the Windows Command Prompt. Please complete the following steps.

1. Create an ASCII file with a text editor such as O&O Notepad.
2. Enter the commands - only one command per line - with the required arguments.
3. When finished, save the file with the .BAT extension. We suggest an 8.3-name convention, as you can easier access short filenames from the console interface.

4. Open the file in the O&O Prompt, for example, c: test.bat. The contained commands will be executed in the order they were saved.

If you would like to prematurely abort a batch operation, press Strg+C.

Command Index

O&O Prompt offers you the ability to control O&O BlueCon with command-line-based instructions similar to those from MS-DOS or the command prompt in Window 2000/XP/Vista. The Command Index below lists all commands, their syntax and parameters. If you need help on a particular command, you can use the /? switch to display a short description of the syntax and the command's purpose.

attrib	
Displays or changes file attributes. This command displays, sets, or removes the read-only, archive, system, hidden, and compressed attributes assigned to files or directories.	
Syntax	attrib [+ -][rashc][<drive:>][<path>]<filename>
Parameters	
<drive:>	Specifies the location and name of the directory, file, or set of files you want to process.
<path>	
<filename>	
+	Sets the specified attributes.
-	Clears the specified attributes.
r	Read-only file attribute.
a	Archive file attribute.
s	System file attribute.
h	Hidden file attribute.

cd	
Displays the name of the current directory or changes the current directory.	
Syntax	cd [[<drive:>]<path> ..]
Parameters	
None	Used without parameters, cd displays the names of the current drive and directory.
<drive:> <path>	Specifies the drive (if different from the current drive) and directory to which you want to change.
..	Specifies that you want to change to the parent directory.
Example:	C:\>Windows\test>cd ..

cls	
Clears the screen. The cleared screen shows only the command prompt and cursor.	
Syntax	cls
Parameters	None

copy	
Copies one or more files to another location.	
Syntax	copy <source> <destination>
Parameters	
<source>	Specifies the location and name of a file or group of files you want to copy. Source can consist of a drive letter and colon, a directory name, a filename or a combination. To specify a group of files, you may use wildcards.
<destination>	Specifies the location and name of a file or group of files to which you want to copy. Destination can consist of a drive letter and colon, a directory name, a filename, or a combination. To specify a group of files, you may use wildcards.
Example:	copy c:\test d:\test

del	
Deletes specified files.	
Syntax	del [<drive:>][<path>]<filename>
Parameters	
<drive:>	Specifies the location and name of the file or set of files you want to delete. Multiple filenames can be used. Filenames can be separated by spaces, commas or semicolons.
<path>	
<filename>	
Example:	del c:\test.txt

deltree	
Deletes specified directory.	
Syntax	deltree [<drive:>]<path>
Parameters	
<drive:> <path>	Specifies the location and name of the directory you want to delete. Subdirectories and files in this directory will also be deleted.
Example:	deltree c:\Windows\test*.*

device/service	
Entering the command 'device' oder 'service' launches the O&O DeviceManager, giving you access to a list of all devices and drivers installed on your system. It is also possible to configure the startup settings (Please see O&O DeviceManager).	

dir	
Displays a list of a directory's files and subdirectories.	
Syntax	dir [/p] [[<drive:>][<path>]<filename>]
Parameters	
None	Used without parameters or switches, dir displays the disk's volume label and serial number; one directory or filename per line, including the filename extension, the file size in bytes, the date and time the file was last modified; and the total number of files listed, their total size, and the free space (in bytes) remaining on the disk.
/p	Displays one screen of the listing at a time. To see the next screen, press any key.
<drive:> <path>	Specifies the drive and directory of which you want to see a listing.
<filename>	Specifies a particular file or group of files of which you want to see a listing. Multiple filenames can be used. Filenames can be separated by spaces, commas, or semicolons.
Example:	dir /p

edlin	
Entering the command 'edlin' will launch the O&O Notepad. O&O Notepad is a basic text editor that allows you to view, edit and save text files. Files in ASCII and Unicode may be edited using O&O Notepad.	

Exit	
Closes O&O Prompt.	
Syntax	Exit
Parameters	None

help	
Lists all available commands with short descriptions. If you need help on a particular command, you can use the /? switch to display a short description of the syntax and the command's purpose.	
Syntax	Help
Parameters	None

info	
Displays information about the file system and volumes.	
Syntax	info [hdd <drive:>]
Parameters	
Hdd	Displays information about available drives including hard drives, floppy disks, CD-ROMs etc.
<drive:>	Specifies the drive from which you want to receive information (MFT location, cluster size, number of sectors etc.)

mkdir	
Creates a directory or subdirectory.	
Syntax	mkdir [<drive:>]<path>
Parameters	
<drive:>	Specifies the drive on which you want to create the new directory.
<path>	Specifies the name and location of the new directory. The maximum length of any single path is determined by the file system.
Example:	mkdir C:\test

passwd	
Changes or removes the password for a user account.	
Syntax	passwd <user account> [<password>]
Parameters	
<user account>	The user account whose password will be changed or removed.
<password>	The new password for the user account. An empty password resets the current password, i.e. the password becomes empty.
Example:	passwd administrator test

rename	
Changes the name of a file. You cannot use the rename command to rename files across drives or to move files to a different directory location.	
Syntax	rename [<drive:>][<path><old> <new>
Parameters	
<drive:>	Specifies the drive on which you want to rename the specified file.
<path>	Specifies the location of the file to be renamed. The maximum length of any single path is determined by the file system.
<old>	Specifies the name of the file you want to rename.
<new>	Specifies the new name for the file. You cannot specify a new drive or path.
Example:	rename c:\test\test.txt test1.txt

rmdir	
Deletes (removes) a directory.	
Syntax	rmdir [<drive:>]<path>
Parameters	
<drive:>	Specifies the drive on which you want to delete the specified directory.
<path>	Specifies the name and location of the directory to be deleted. The maximum length of any single path is determined by the file system.

safeerase	
Securely deletes files or volumes.	
Syntax	safeerase [/<security level>] [/output <file>] [/verbose] [/silent] [/help] [/showdisks] [/matchfile] [/matchfolder] [/matchall] [/volume <drive>] [/disk <hard drives#>] [/freespace <drive>] [/y]
Parameters	
None	Help text will be displayed.
/highestsecurity /highsecurity /mediumsecurity /lowsecurity /lowestsecurity	The available security levels. They refer to the deletion methods described. If no security level is chosen, the default is /highest security.
/output <Data>	Saves the output additionally to a file.
/verbose	Detailed output will be shown.
/silent	Screen output will not be shown.
/help, /?	Help will be shown.
/showdisks	Shows drive and hard disk information. The disks will be numbered so that the numbers can be used with the command /disk.
/matchfile	Only matching files will be deleted. (Standard) Use the 'match' command in combination with a file filter (e.g. *.txt, a?c.exe)
/matchfolder	Only matching folders will be deleted.
/matchall	Matching files and folders will be deleted.
/volume <drive>	Deletes the entire content of the drive.
/disk <hard disk#>	Deleted the entire hard disk.
/freespace <drive>	Deletes free space on the drive..
/y	All security checks will be suppressed.

Examples:

safeerase beispiel.txt /output test.log

The text file is deleted with the highest security method and the output saved in the file test.log.

safeerase /matchfile *.txt /silent /mediumsecurity

All text files in the current folder are deleted with the medium security level without output to screen.

safeerase /freespace c: /verbose

The free space on c: is deleted with the highest security method and detailed output.

safeerase /volume d: /y /lowsecurity

The content of the drive d: is deleted with the low security level and without security checks.

safeerase /disk 0

All partitions on the first hard disk are completely deleted.

All parameters, apart from /help and /showdisks, can be combined with one another.

scopy	
Copies one or more files to other locations. If the files lie on an NTFS Drive, they retain the security and ownership attributes.	
Syntax	scopy <Source> <Target>
Parameter	
<Source>	Specifies the path and name of a file or file group which will be copied from. <Source> can consist of drive name and colon, directory name, file name or a combination thereof. To indicate a group of files, wildcard characters can be used.
<Target>	Specifies the path and name of a file or file group which will be copied to. <Target> can consist of drive name and colon, directory name, file name or a combination thereof.

type	
Displays the contents of a text file. Use the type command to view a text file without modifying it.	
Syntax	type [/p] [<drive:>][<path>]<filename>
Parameter	
<drive:> <Path>	Specifies the location and name of the file you want to view.
<Filename>	If using long filenames and if the filename contains spaces, you must enclose the filename within quotation marks ("") or use the short (8.3 style) filename.
Example:	type c:\test\test.txt

user	
Displays a list of all local user accounts.	
Syntax	user
Parameters	None

ver	
Displays the version number of O&O BlueCon.	
Syntax	ver
Parameters	None

vmap	
Lists all mounted volumes, their mappings and additional information.	
Syntax	vmap
Parameters	None

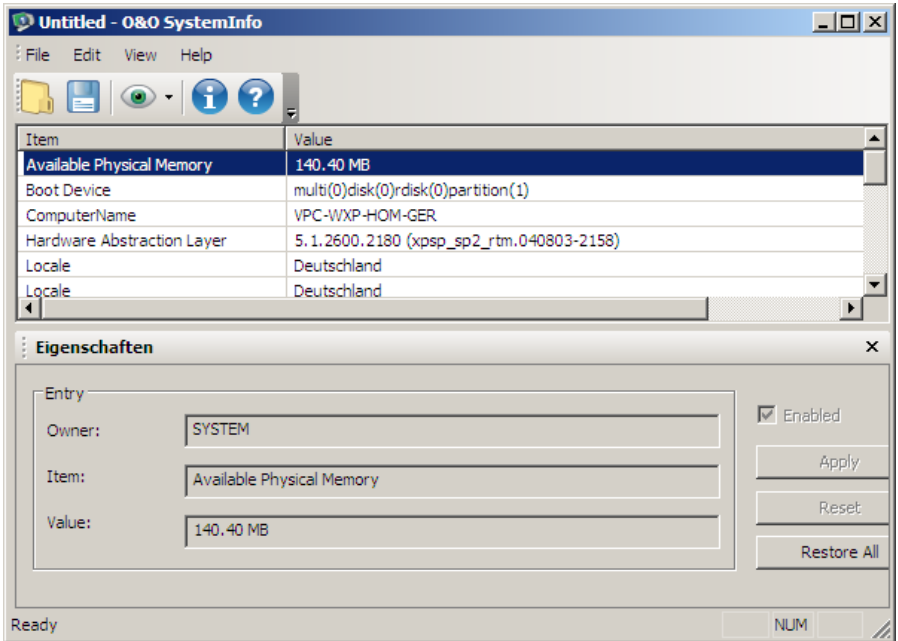
xcopy	
Copies files and directories, including subdirectories.	
Syntax	xcopy [/e] [/s] <Source> <destination>
Parameters	
/e	Copies all subdirectories, even if they are empty.
/s	If the files are located on an NTFS volume, security and ownership attributes will be preserved.
<source>	Specifies the location and the name of a file or group of files you want to copy. Source can consist of a drive letter and colon, a directory name, a filename or a combination. To specify a group of files, you may use wildcards.
<destination>	Specifies the location and name of a file or group of files to which you want to copy. Destination can consist of a drive letter and colon, a directory name, a filename, or a combination. To specify a group of files, you may use wildcards.
Example:	<code>xcopy c:\windows\test*. * d:\test\</code>

O&O SystemInfo

Introduction

O&O SystemInfo gives you the best possible overview of the system settings in your Windows operating system. Here you can delete, deactivate or change system parameters.

- To open O&O SystemInfo, click on **Start/Programs/AdministrativeTools** and then **System-Information**.



O&O SystemInfo

Note:

The Boot Configuration Data (BCD) for Windows Vista and newer operating systems is only supported to a limited degree. BCD Store cannot be manipulated and is only shown for control purposes.

SystemInformation displays:

- Configuration of the win.ini files
- Configuration of the system.ini files
- Configuration of the boot.ini files
- Autostart entries
- Environmental variables

A further important aspect of O&O SystemInfo is the presentation of a list of Autostart entries. Programs from the Autostart Program group are displayed as well as the most important Autostart areas from the registry database, including:

HKEY_LOCAL_MACHINE\SOFTWARE\Microsoft\Windows\CurrentVersion\Run

HKEY_CURRENT_USER\SOFTWARE\Microsoft\Windows\CurrentVersion\Run

These areas are also favored by virus programs as storage locations for viruses, Trojans or Spyware. The Autostart entries can be deactivated and/or activated with SystemInfo. This prevents starting damaged or infected programs.

Edit system parameters

1. Select a configuration or entry.
2. To edit a system parameter, select one from the list on the right.
3. A window will appear where you can edit.

Deactivate system parameters

1. Select an entry from a configuration.
2. Delete the checkmark next to "activate".
3. The element and its value are now deactivated.

Delete system parameters

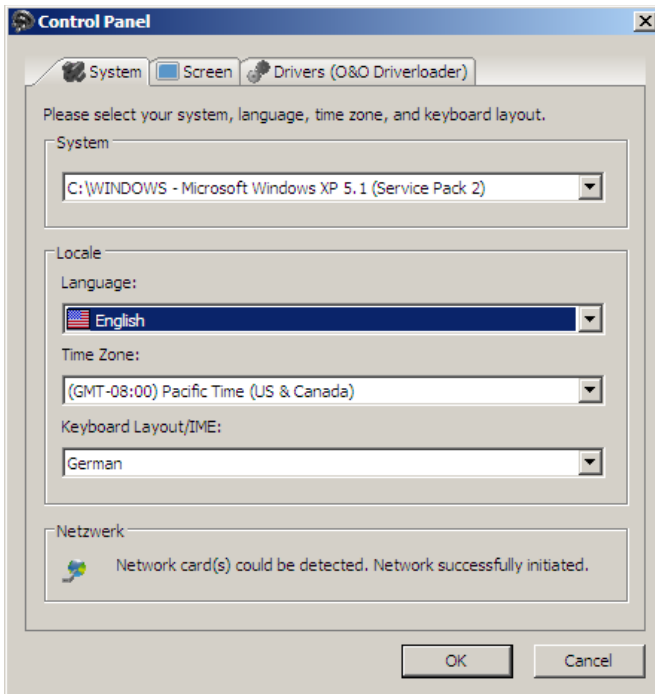
1. Click on a system parameter so that its value is displayed in an editing window.
2. You can now delete the parameter.

Control Panel

Functions

With the Control Panel you can set parameters, screen resolution, language and keyboard settings, time zones, activate the network and select the operating system. The last function is particularly important in cases where the target computer has several operating systems installed. This selection defines which system database O&O BlueCon should communicate with. All the O&O BlueCon tools executing system-dependant information will automatically access the selected system. It is possible to change the target system or activate the network retrospectively whilst O&O BlueCon is running using the Control Panel.

- To open the O&O System Settings click on **Start/Settings** and then **Control Panel**.




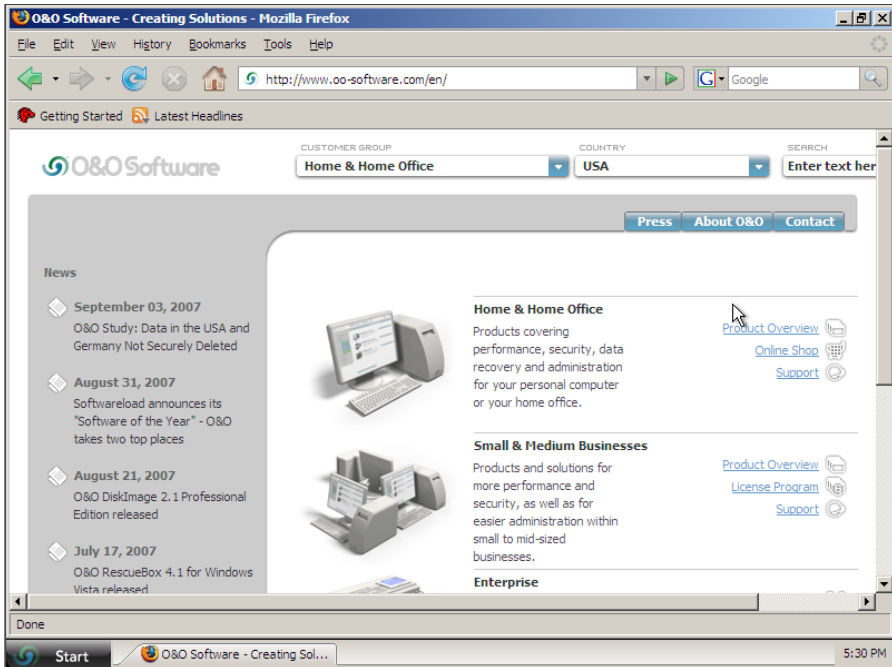
System Settings

WebBrowser

Functions

The integrated FireFox® Web Browser makes it possible to view internet-based content. This allows you to research problems on the internet or download files that may be useful to correcting a problem.

 **Note:**
To use this feature, it is necessary to be connected to a Local Area Network (LAN) with access to the internet.



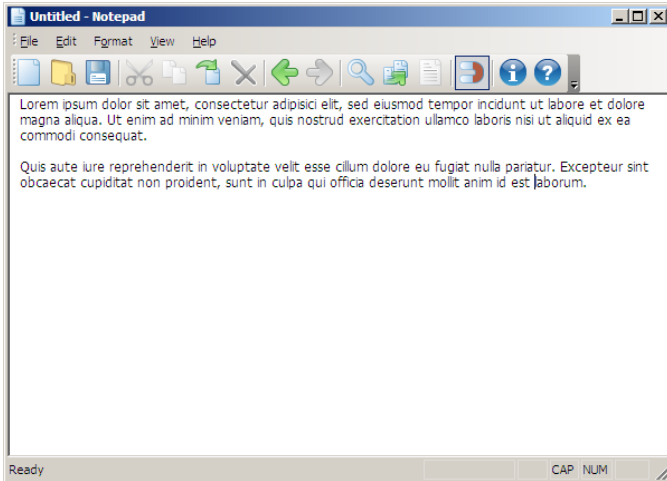
WebBrowser

O&O Notepad

Functions

O&O Notepad is a basic text editor that allows you to view, edit and save text files. Files in ASCII and Unicode may be edited using O&O Notepad.

- To open O&O Notepad, click on **Start/Programs/Accessories** and then **Notepad**.



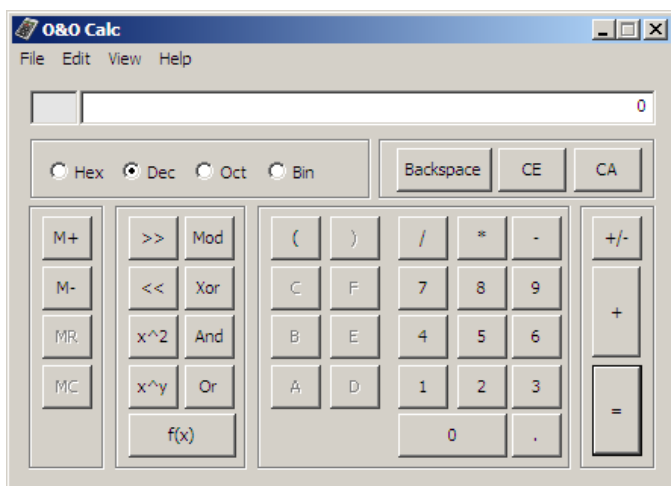
O&O Notepad

O&O Calc

Functions

O&O Calc, O&O BlueCon's built-in calculator, makes it possible to perform basic arithmetic as well as conversions between commonly used number formats (Decimal, Hexadecimal, Octal and Binary). Additionally, O&O Calc is able to calculate equations.

- To open the O&O Calc, click on **Start/Programs/Accessories** and then **Calculator**.



O&O Calculator

O&O Data Recovery Suite

Introduction

Licensees of the O&O BlueCon 7 Tech and Admin Editions have access to the following professional-grade data recovery products:

- O&O UnErase 4.1
- O&O FormatRecovery 4.1
- O&O DiskRecovery 4.1

These programs offer an excellent addition to the other high-power tools included in O&O BlueCon 7. With these solutions, you will be prepared for virtually any type of data loss.

The following chapters will give you an overview of how best to use these additional products and guide you through the first steps with this software.

Differences between O&O DiskRecovery, O&O FormatRecovery and O&O UnErase

O&O DiskRecovery, O&O FormatRecovery, and O&O UnErase are three separate software products that are designed to compliment each other.

If **O&O UnErase** is unable to find your missing data, O&O FormatRecovery or O&O DiskRecovery could still possibly be of help. Here are a few typical application examples to illustrate the differences between the software programs.

	O&O UnErase	O&O Format-Recovery	O&O Disk-Recovery
Files were accidentally deleted from the Recycle Bin.	x	x	x
A virus or malicious software caused damage to some data and now some files or folders are missing.	x	x	x
A drive was formatted.		x	x
Windows is saying that the drive has to be reformatted.		x	x
The storage volume was reformatted and the files were heavily fragmented.		x	

O&O UnErase did not produce the desired results.		x	
Windows can no longer access the hard drive.			x
No file system is present on the drive.		x	x
O&O FormatRecovery and O&O UnErase did not product the desired results.			x
A new operating system was accidentally installed.			x
Data recovery with O&O products is not possible. The storage volume is defective.	Contact O&O Services by e-mail at: www.oo-services.com		

Starting the programs in Windows

The programs O&O UnErase, O&O DiskRecovery and O&O FormatRecovery can all be launched and run in Windows without prior installation directly from the O&O BlueCon CD. To do so, simply insert the O&O BlueCon CD into your CD ROM drive and after Windows has started. If O&O BlueCon does not start automatically, it is possible that the Windows Autoplay function is disabled. Make sure this function is activated and try inserting the CD again.

About O&O UnErase

Whether it be those accidentally deleted text documents or those great photos from you last vacation: With its Explorer-like file structure, O&O UnErase enables you to navigate through your deleted files as if they had never been deleted. With one click of the mouse you can restore single files or entire folders. Never before was the restoration of deleted files so easy and intuitive to operate. O&O UnErase can restore all data stored on drives recognized and monitored by Windows.

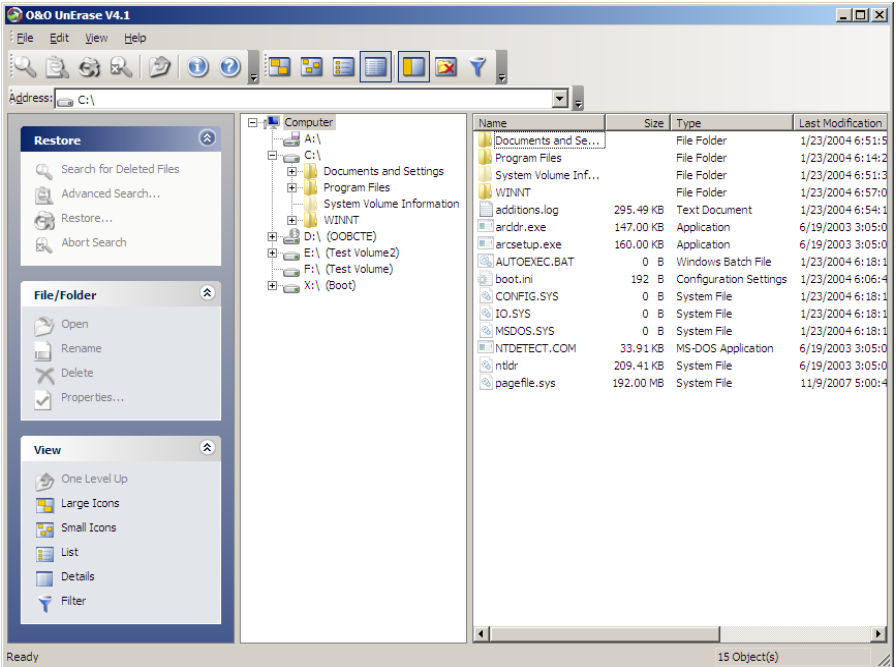
The online software documentation is your best source for all details regarding the operation of O&O UnErase. Access to this documentation can be made through the program group in the Start Menu or through the Help menu in O&O UnErase itself. The software's internal Help file can also be reached by hitting the F1 key while the O&O UnErase is running.

Main View

The Main View in O&O UnErase behaves very similarly to Windows Explorer, enabling you to easily use the program with only little or no previous knowledge.

The Main View is divided into three vertically tiled panes:

- Frequently used commands and settings are accessible through the pane on the left. These commands are also accessible through the Toolbar or the Context Menu.
- The List of drives and directories in the middle pane enables an easy navigation through existing and already-deleted files very similar to Windows Explorer.
- The List of Folders and Files on the right-hand side gives you all pertinent file information regarding the selected existing and deleted files.



Main View of O&O UnErase 4.1

Status Bar

At the very bottom of the Main View the Status Bar can be found in which the progress of all running searches and other status reports are displayed.

Toolbar

The Toolbar is the fastest way to access the most important functions of O&O UnErase. All commands, however, can be accessed through the pull-down menus at the top of the Main View. Through the View menu you can customize the composition of the Toolbar to meet your needs.



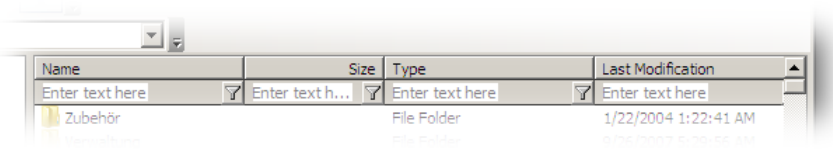
All Toolbars Including the Quick Search Bar

Displayed from left to right:

- Search for a drive on the system.
- Open the Advanced Search dialog.
- Restore deleted files.
- Cancel current search.
- Go up one level.
- View Help.
- View program information.
- Switch views.
- Tiles
- Icons
- List
- Details
- Toggle task list.
- Displays only deleted files and folders.
- Toggle Filter function.

Filter

If you would like to limit the files displayed in the file list on the right-hand side, it is possible to use the Filter function. This feature may be activated through the View menu or by pressing the Filter icon in the Toolbar. When activated, a series of fields will appear in which specific text may be entered to narrow down the number of files displayed. As before, it is possible here to use place holders.



File List with Activated Filter Function



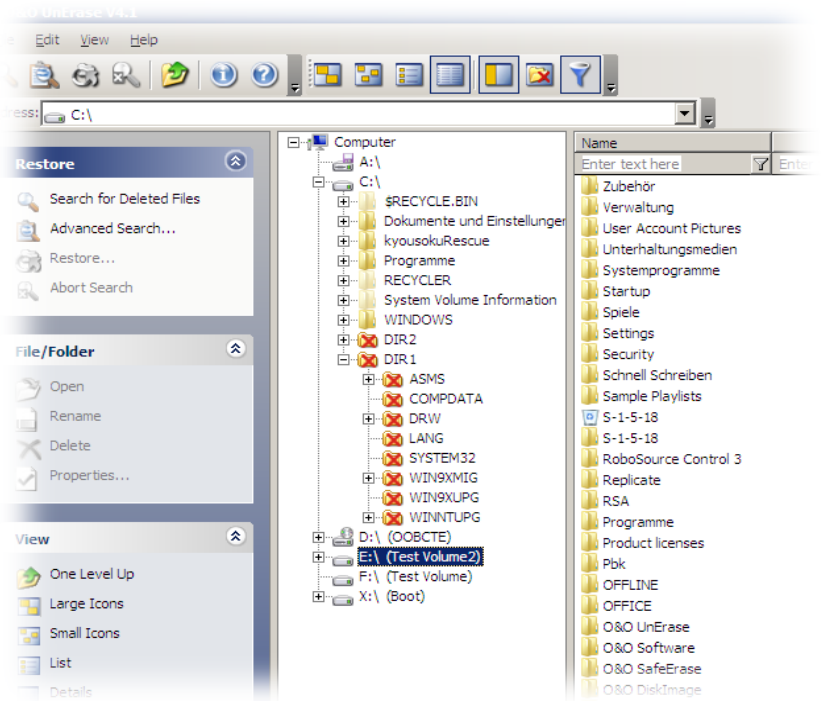
Tip:

In general, it is easier and faster to just use the Advanced Search function to find and display a specific set of files.

Searching for Deleted Files and Folders

To find deleted files and folders on a drive, please follow the directions below:

1. Select from the list of drives on the system the drive which you would like to search.
2. From the File menu at the top of the screen select the command Search for deleted files.
3. The search will now be initialized. You can follow the progress of the running search in the Status Bar at the bottom of the screen.
4. After the search is completed, the files and folders found during the search will be marked in both the list of drives and files with a red "X" or arrow.



Main View with Deleted Files and Folders



Tip:

You can also execute a Quick Search by way of the Search field in the Toolbar. Just enter the drive letter and the path of the directory you would like to search and press Enter on your keyboard.

Canceling a Search

If you would like to cancel a Search, select **Cancel search** from the **File** menu or press the corresponding icon in the Toolbar. The search will then be canceled and the files and folders that have already been found will be displayed.



Cancel Search Icon in the Toolbar during a Search






Tip:

Alternatively you can use the keyboard shortcut Ctrl+Esc to interrupt a running search.

Deleted Files and Folder Designations

The red "X" indicates a file or folder is deleted. A small "X" displayed with a folder indicates that deleted files have been found in this folder, although the folder itself is still intact.

Icon	Definition
	The folder has been completely deleted (large red "X")
	The folder contains deleted files or folders (small red "X")
	This file has been deleted and can probably be restored (red arrow).

Normally the original filenames of the deleted files can be restored. However, if this is not possible, the folders and files will be generically numbered and named by O&O UnErase.

Restoring Files and Folders

The next step after deleted files or folders have been found is to restore the ones you need (if this is possible).



Tip:

Please note that in the middle pane of the Main View only one single folder may be selected for restoration. In the right-hand pane it is possible to select more than one file for restoration by pressing the Ctrl key on the keyboard while selecting multiple files. To select all files in a specific folder, use the keyboard shortcut Ctrl+A.

1. Files and/or folders you wish to restore can be selected in either the middle or right-hand panes of the Main View.
2. Press the Restore icon on the Toolbar or select the corresponding heading in the Context Menu.

3. It is now possible to select where the restored files are to be saved. As your target directory, you may create a new folder or select one that already exists.
4. In order to avoid any possibility of data loss, it is advised that you save the newly restored files onto a different partition than the one where the files were originally stored. Please be aware that it is possible to store the files onto a network drive as well.

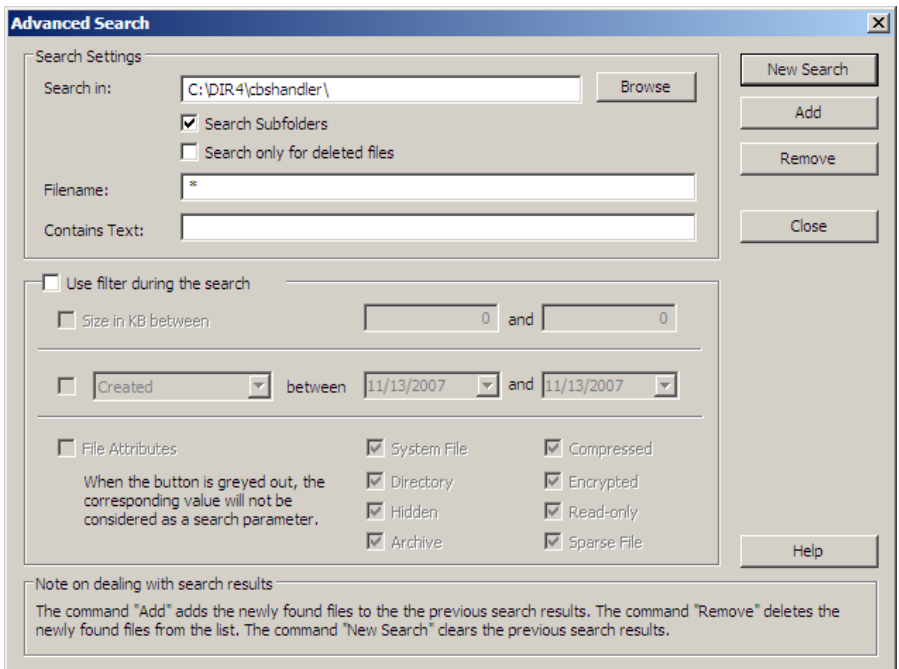


Tip:

It is also possible to simply drag-and-drop deleted files and folders you would like to restore into a directory displayed in the Main View. The restoration of the deleted files will automatically follow.

Advanced Searches

With the O&O UnErase's Advanced Search function, you possess a powerful tool for quickly and securely finding deleted files. Through a series of user-defined search parameters it is possible to considerably increase the precision of your search result.



Advanced Search Dialog

Search Settings

The search settings dialog enables you to define the drive or folder to be searched. If you would like to also search subfolders, select the option with the same name.

It is also a possibility to expand the search to include files that have not been deleted. To do so, please uncheck the option **Only search** for deleted files. If this option remains selected, only deleted files will appear in the search results.

Filename

In the field called **Filename**, you can either enter an exact filename or a filename containing a placeholder. For example, "*.BMP" would indicate you only wanted to search for Bitmap images.

Letter capitalizations are not considered in by the search function. You can use the special characters "*" and "?". "*", however, can be used for multiple characters, whereas "?" may only stand for a single character.

Contained Text

An especially powerful option is searching for text contained in the file. If you are looking for a file but only can remember a fragment of its name or contents, then this could be very useful to you.

Using the Filter When Searching

In order to customize your search further, it is possible to use the Filter function.

File Size

Here you can limit the size of the files that are to be searched. Just enter a range in Kbytes in which the desired file might fit.

Date

This option allows you to enter a range of dates pertaining to the file and defining how that date range is to be applied during the search:

- **Created** – Date when the file was first created
- **Modified** – Date when the file was last saved
- **Accessed** – Date when the file was last accessed

File Attributes

The search can also be narrowed down to looks for specific attributes of the desired file. You can select from three options regarding each specific attribute:

- **Marked (Checked)** – The file must exhibit this attribute.
- **Unmarked (Empty)** – The file may not exhibit this attribute.
- **Marked Green** – This attribute will not be considered as a search parameter.

Running an Advanced Search

To Run an Advanced Search you have three options:

- **New Search** – A search will be initialized and all previous search results will be lost.
- **Add** – The search will be initialized and the search results will be added to the search results already displayed.
- **Remove** – The search will be initialized and those search results found will be filtered out of the list of search results already displayed.

You may repeat the search function as many times as you like, adding or removing the results from the displayed list of search results as you go. While the search is running, the search dialog box will remain closed.

When you no longer would like to run a search, you can close the search dialog by pressing the Close button.

About O&O FormatRecovery

It's happened to the best of us: your hard disk is mistakenly formatted and important files can be deleted and presumed lost forever. Whether the result of a computer virus, a software error, or user error, this can be devastating. Important documents and business data aside, in the age of digital photography the loss of an captured moment can be irreplaceable.

When such a disaster strikes, what can be done? Many users cut their losses and accept that their files are lost. However, this is not necessarily the way it has to be. Even when Windows does not offer a viable solution for the recovery of lost data (i.e. the Recycle Bin), there still is hope with O&O FormatRecovery, an easy and secure way to recover data you had thought was deleted. Accompanied by an on-screen assistant, you are guided through the data recovery process, step-by-step. When all is finished you will be able to use the once-deleted data just as before.

The online software documentation is your best source for all details regarding the operation of O&O FormatRecovery. Access to this documentation can be made through the program group in the Start Menu or through the Help menu in O&O FormatRecovery itself. The software's internal Help file can also be reached by hitting the F1 key while the O&O FormatRecovery is running

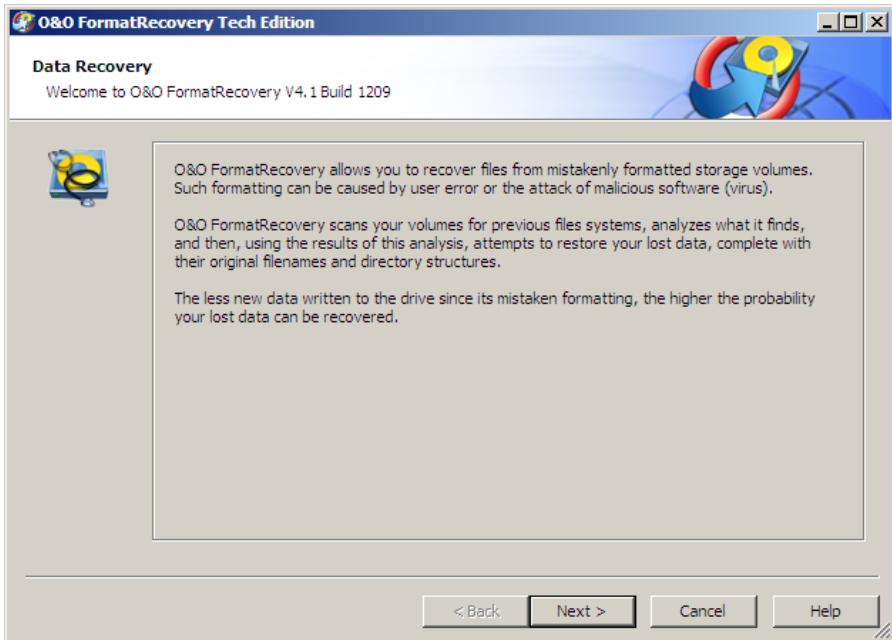
Main View

As soon as O&O FormatRecovery starts, it is possible to begin a new data recovery session or continue one you have saved. Clicking Next will take you to the Drive Selection dialog box. O&O FormatRecovery may be Cancelled at any time.

Loading a Saved Data Recovery

- Select Load Data Recovery and select the data recovery file. Such a file generally has the extension FRD.
- The data recovery information will be loaded and you will then be able to continue with your saved settings.

If the data volume on which you would like to recover data is not present on your system, an error message will appear.



O&O FormatRecovery Startup Dialog Box

Selecting a Drive

Select the drive where you would like to scan for deleted data. It is possible to select a partition (e.g. C: or D:) or an entire hard disk drive. In addition you can select any storage media, from USB sticks memory cards for digital cameras. Clicking **Next** will conclude the drive selection dialog.

By default, the unpartitionable areas of a hard drive, or those located past the partitioned areas of the disk, are hidden.

If you would like to add drives after O&O FormatRecovery has been loaded (e.g. USB stick or digital camera), click on **Update Drives**. The newly connected hardware will be loaded and displayed in the list of drives.

Drives can be scanned for previous partitions and files systems. This is necessary is, for example, if a partition has been deleted or a volume has been reformatted with a different files system. To start the analysis of your storage volumes, click "**Analyze Drive**".



Note:

Regardless of the size of the storage volume, this analysis could take some time.

Data Recovery Settings

After the drive has been selected, you have the opportunity to select some options that will affect the precision and duration of the scanning process. In most cases, the default settings are sufficient and do not require any modification.

Restore Empty Folders

With this option, you can have folders restored, even if they do not contain any data. This allows for the restoration of complicated directory structures containing multiple intertwined folders.

Restore Empty Files

With this option, you can have files restored, even if they do not contain any data.

Restore system and hidden files as they are

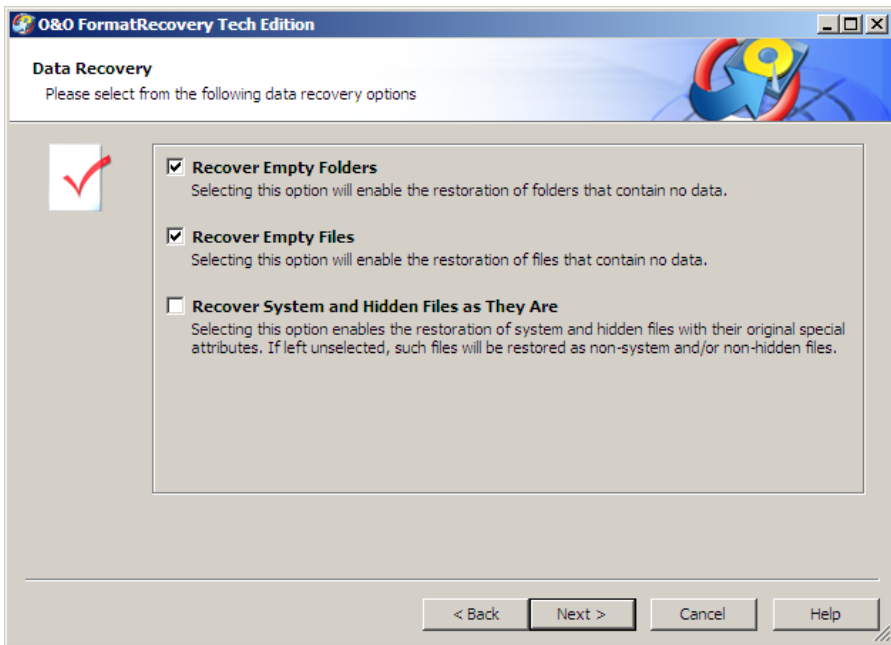
This option allows for the restoration of system files and hidden files with their original attributes intact.

When this option is not selected, these files would be restores as "normal" files (Not system files, and not hidden).



Note:

Please consult your folder options in Windows when modifying this setting. It is possible that files will not be visible after they have been restored.



Selection Data Recovery Options

Additional Recovery Settings

Drive Errors

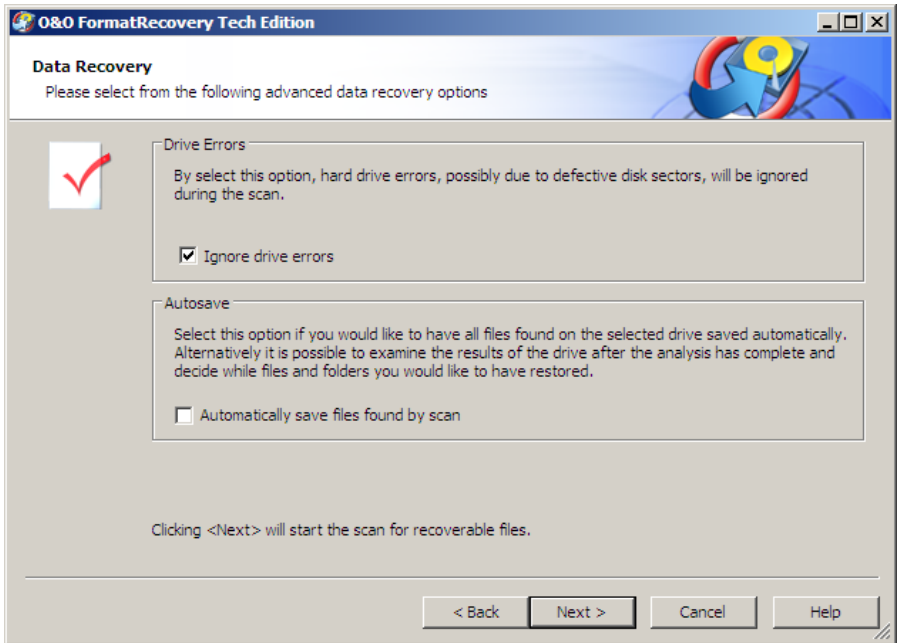
This option allows you to instruct the software to ignore areas of the storage volume where drive errors have occurred.

Automatically Saving Files After They Are Found

If you would like to execute an unsupervised scan, it is possible to instruct O&O FormatRecovery to save and restore all of the scan results automatically. This can save time. If you would like to select this option, your next step will be to define a target folder. Once this is completed, the scan will be initiated. More information on this can be found in the section entitled "Saving Files".

Note:

This function is not available in the trial version of the software.



Selection Data Recovery Options

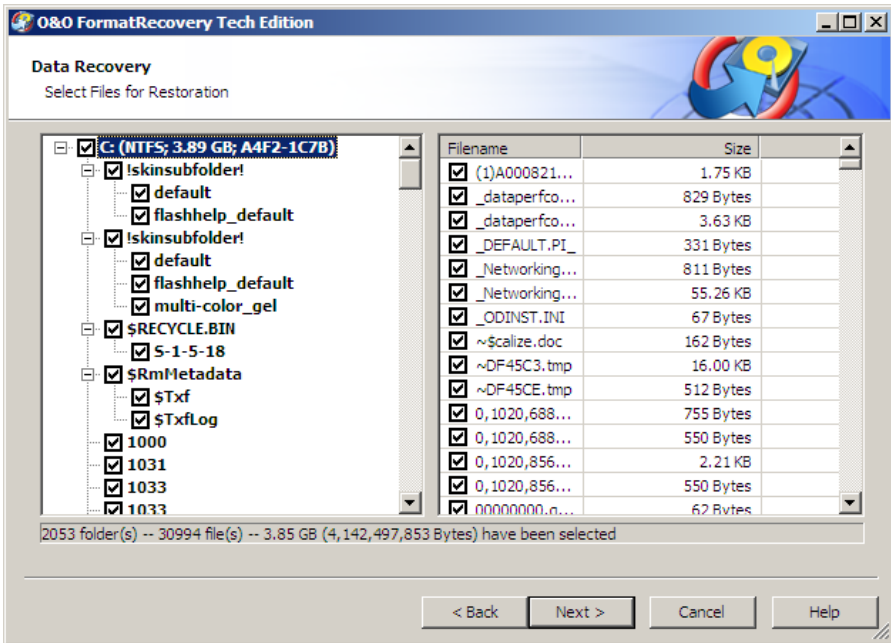
Running and Interrupting a Scan

During the scan you will receive information regarding the O&O FormatRecovery scan by way of a status dialog box. In it you will find the overall progress of the scan and the number of files found to this point.

O&O FormatRecovery can be **Minimized** in to the System Tray. Pressing **Cancel** will interrupt the scan. When the scan is interrupted you will be returned to the previous page of the assistant where you will be given the option of resuming the scan or running it again.

Selecting Files for Restoration

After the scan has been completed, all found files, regardless of their respective save locations, are displayed on the left-hand side. When you are finished selecting the files for restoration, click **Next** to continue. Click the check-box next to the drive's letter to have all of the contained files restored. In some circumstances, the sorting and listing of a large number of files can take some time.



Selecting Files

Note:

ALL found files on the scanned drive are displayed here in the list. These consists of all files and folders visible to Windows. This list does not indicate, however, whether specific files or folder restorable or not.

Selecting a Target Folder

To recover selected files you need to enter a saving location. By default your 'My Documents' folder, but any folder, including network folders, may be selected for this. O&O FormatRecovery automatically creates a subfolder into which the recovered files are saved. Because an individual subfolder is created for every file type recovered, it is advised that you select a target folder that is new or empty. In addition, it is possible to create a report regarding the completed data recovery.

Please note that you will not be able to save the recovered files onto the same partition where the deleted data was originally located. Also do not forget to make sure you have enough storage capacity on disk to facilitate the newly recovered files.

Click **Next** to initiate the recovery of data.

Creating a Report

Activating this option will enable you to view a detailed report regarding the completed data recovery session. You can have this report saved to a different target folder as that in which the recovered files are to be saved. By default, the report will have the filename "oofr_report.rtf".

The reports are saved in Rich Text Format (RTF) and can be viewed and printed with the help of applications such as WordPad, Microsoft Word, or any other text editing programs.

Saving Files

While the recovered files are being saved to their target folder, O&O FormatRecovery keeps you up-to-date by way of a convenient dialog box. Information, such as overall progress and the total size of the saved files, is displayed in real-time as the operation progresses.

The elapsed time, as well the estimated time remaining, can also be found here.

O&O FormatRecovery can be **Minimized** in to the System Tray. Pressing **Cancel** will interrupt the saving operation. When the operation is interrupted you will be returned to the previous page of the assistant where you will be given the option of changing the target directory and reselect the files to be recovered. Please note that all files that have already been successfully saved will be unselected so that you can continue to save files where you left off.

Completing the Data Recovery

After the successful recovery of files is completed, a summary of the data recovery will appear. From here you can Open Target Folder and immediately access the restored files.

By clicking Finish O&O FormatRecovery will be closed.

About O&O DiskRecovery

It's happened to the best of us: with the blink of an eye important files can be deleted and presumed lost forever. Whether the result of a computer virus, a software error, or user error, this can be devastating.

When such a disaster strikes, what can be done? Many users cut their losses and accept that their files are lost. However, this is not necessarily the way it has to be. Even when Windows does not offer a viable solution for the recovery of lost data (i.e. the Recycle Bin), there is hope with O&O DiskRecovery, an easy and secure way to recover data you had thought were lost. O&O DiskRecovery intensely combs storage volumes for lost data and can restore files other software programs cannot.

The online software documentation is your best source for all details regarding the operation of O&O DiskRecovery. Access to this documentation can be made through the program group in the Start Menu or through the Help menu in O&O DiskRecovery itself. The software's internal Help file can also be reached by hitting the F1 key while the O&O DiskRecovery is running.

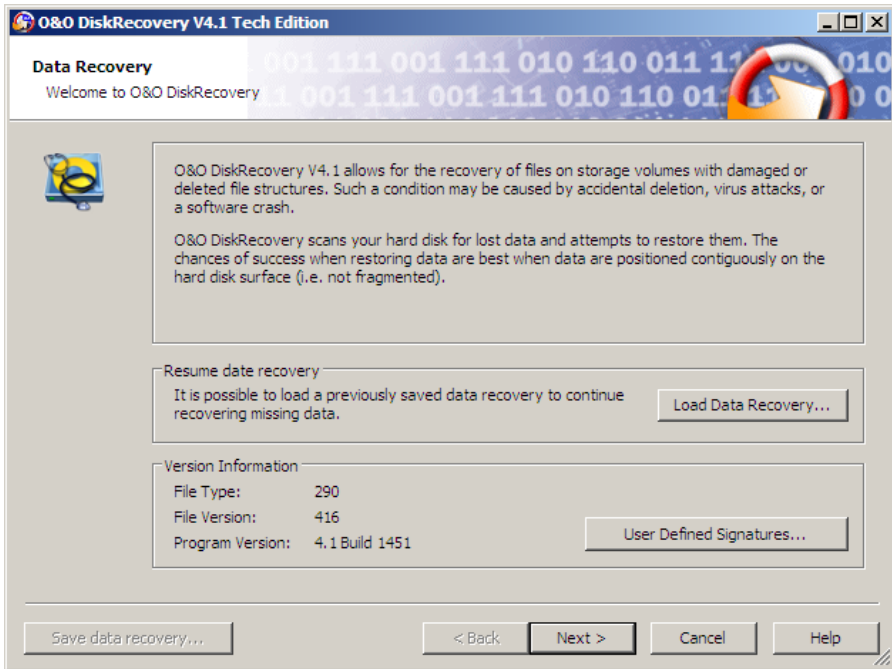
Starting O&O DiskRecovery

As soon as O&O DiskRecovery starts, it is possible to begin a new data recovery session or continue one you have saved. Clicking **Next** will take you to the Drive Selection dialog box. O&O DiskRecovery may be **Cancelled** at any time.

Loading a Saved Data Recovery

- Select Load Data Recovery and select the data recovery file. Such a file generally has the extension DRD.
- The data recovery information will be loaded and you will then be able to continue with your saved settings.

If the data volume on which you would like to recover data is not present on your system, an error message will appear.



O&O DiskRecovery Startup Dialog Box

Selecting a Drive

Select the drive where you would like to scan for deleted data. It is possible to select a partition (e.g. C: or D:) or an entire hard disk drive. In addition you can select any storage media, from USB sticks memory cards for digital cameras. Clicking **Next** will conclude the drive selection dialog.

By default, the unpartitionable areas of a hard drive, or those located past the partitioned areas of the disk, are hidden. To reverse this, unselect the option **Hide unpartitionable areas**.

Differing from unpartitionable areas, unpartitioned areas on the hard disk can also exist under some circumstances. Although these areas on the disk cannot be accessed by Windows, O&O DiskRecovery is able to scan these regions. These areas are listed in the list of partitions as RAW or "unpartitioned".

If you would like to add drives after O&O DiskRecovery has been loaded (e.g. USB stick or digital camera), click on **Update Drives**. The newly connected hardware will be loaded and displayed in the list of drives.

O&O DiskRecovery Scan Settings

After drive selection you will be able to define the settings that will have a huge effect on the precision and length of the scan. In addition you can lay down a minimum length for text files. If a device, such as a hard drive or USB stick, has been selected and not a partition, the options **O&O SmartScan** and **O&O RawScan** are supported and cannot be selected. However, the default settings are generally sufficient for most cases and therefore probably do not need to be changed.

Maximum Scan Depth for Recovering Data (O&O DeepScan)

Activate this option when you are scanning for especially small files. Please note that the O&O DeepScan requires more time to be completed.

Ignoring Existing Files (O&O SmartScan)

A common problem that occurs with data recovery is that not only deleted files are recovered. In addition, existing files are recovered which can mean tedious work for you when you have to filter through those files that already exist on your system. The O&O SmartScan takes over this job for you so that only deleted files are found and restored. This can greatly accelerate the data recovery process, depending on the settings.

Please note that this option is only available when scanning partitions and not entire devices.

Leaving Out the File System During the Scan (O&O RawScan)

If the partition on which you would like to recover data has been formatted (possibly with another file system), O&O DiskRecovery can be triggered to not scan the file system. This can increase the duration of the scan.

Please note that this option is only available when scanning partitions and not entire devices.

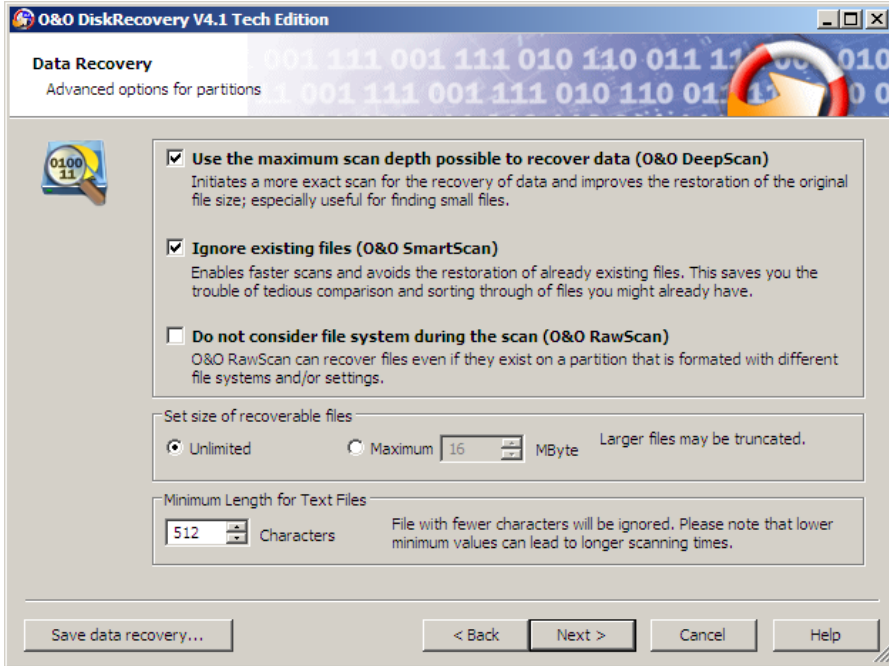
Limiting the Scan to File of a Specific Size

This function limits the scanning sequence to notice only files to files smaller than a set number of Megabytes. This maximum value can be set anywhere between 1 and 1024 MB.

By default, all recoverable files, regardless of their size, are scanned. Using this function will conserve system resources and possibly accelerate the entire scanning operation.

Minimum Length for Text Files

O&O DiskRecovery can recognize a number of different text files (HTML, source text files etc.). The default value of 512 characters means that all text files that consist of 512 characters or less will not be picked-up by the scan. If you would like to set this value lower, you can do so here. Please note that the minimum value is 16 characters; the smaller the value, the longer the scan duration.



Defining the Scan Settings

Running and Interrupting a Scan

During the scan you will receive information regarding the O&O DiskRecovery scan by way of a status dialog box. In it you will find the overall progress of the scan, the progress pertaining to a specific file, and the number of files found to this point.

The elapsed time, as well the estimated time remaining, can also be found here.

O&O DiskRecovery can be **Minimized** in to the System Tray. Pressing **Cancel** will interrupt the scan. When the scan is interrupted you will be returned to the previous page of the assistant where you will be given the option of resuming the scan or running it again

Selecting Files for Restoration

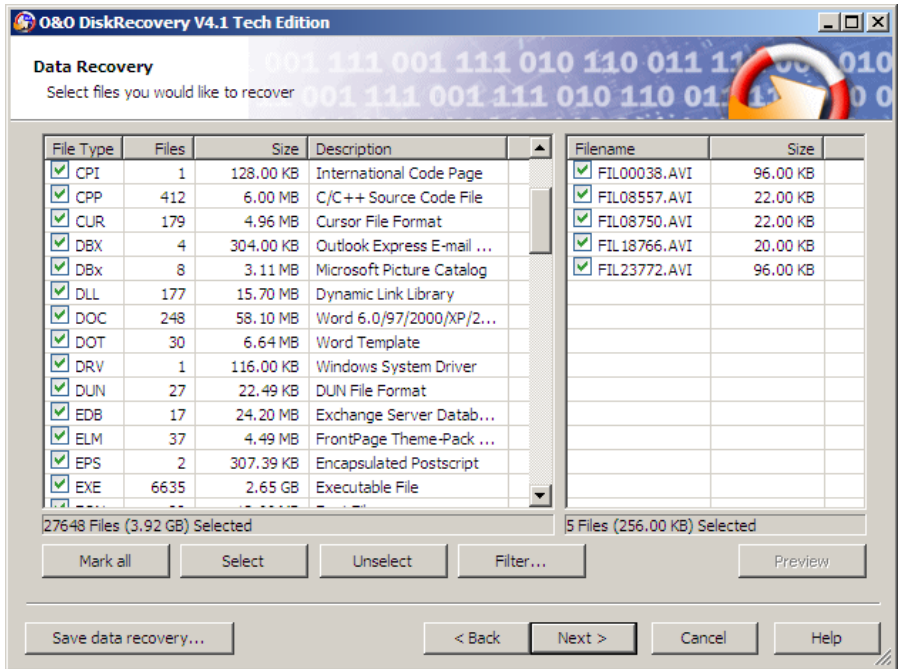
After the scan has been completed, the files found will be displayed in two lists; the list to the left displaying the types of files found, the one on the right showing the actual files of this type found. By selecting a specific file type on the left, the corresponding list on the right will change. Depending on which list is activated, the commands Select All, Select, and Unselect can be used.

When your selections are made, click on Next to continue to the next step.



Note:

In the Personal Edition the maximum number of files that may be restored in a single data recovery is 100. In both the Admin and Tech Editions of the software there is no limit to the number of files restored in a single data recovery.

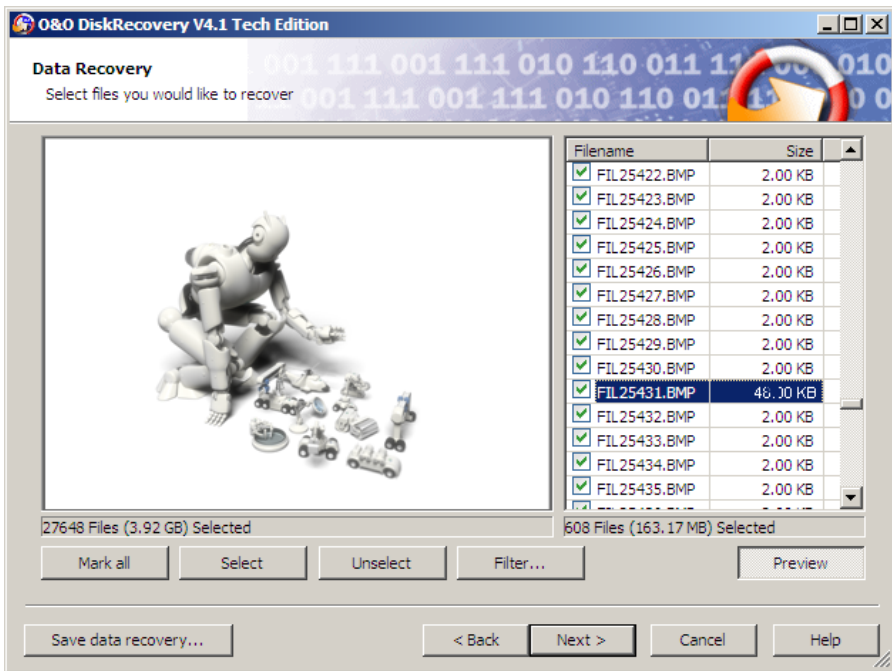


Selecting Files

For many image and text files, it is possible to view an preview before they are restored.

The preview must be activated. First select to the left a file type group and then click Preview. If the button is grayed-out, these types of files cannot be previewed.

With the preview function active, click on the file you would like to preview. The preview will appear in the space to the left of the file list.



Preview (Image File)

To deactivate the preview function, simply click **Preview** one more time.

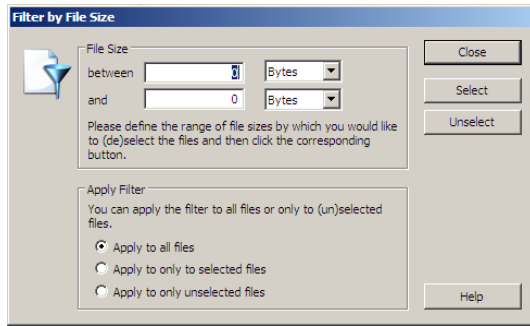
Note:

The fact that a preview is not available for some files does not rule out the chance for a successful and flawless restoration of those files. This function should not be seen as a way to judge the quality of a pending restoration, but rather as a means to make the file identification process easier.

Filter

With the Filter option it is possible to include or exclude specific files from the list depending on their size. To do so, enter the size range in which the desired files should fall. You can also stipulate whether the filter should consider all files, only those previously selected, or only those you previously left unselected.

The command **Select** highlights all corresponding files for restoration. **Unselect**, in contrast, removes those highlights.



Applying a filter

Selecting a Target Folder

To recover selected files you need to enter a saving location. By default your 'My Documents' folder, but any folder, including network folders, may be selected for this. O&O DiskRecovery automatically creates a subfolder into which the recovered files are saved. Because an individual subfolder is created for every file type recovered, it is advised that you select a target folder that is new or empty. In addition, it is possible to create a report regarding the completed data recovery.

Please note that you will not be able to save the recovered files onto the same partition where the deleted data was originally located. Also do not forget to make sure you have enough storage capacity on disk to facilitate the newly recovered files.

Click **Next** to initiate the recovery of data.

Creating a Report

Activating this option will enable you to view a detailed report regarding the completed data recovery session. You can have this report saved to a different target folder as that in which the recovered files are to be saved. By default, the report will have the filename "DiskRecoveryReport.rtf".

The reports are saved in Rich Text Format (RTF) and can be viewed and printed with the help of applications such as WordPad, Microsoft Word, or any other text editing programs.

Saving Files

While the recovered files are being saved to their target folder, O&O DiskRecovery keeps you up-to-date by way of a convenient dialog box. Information, such as overall progress and the total size of the saved files, is displayed in real-time as the operation progresses.

The elapsed time, as well the estimated time remaining, can also be found here.

O&O DiskRecovery can be **Minimized** in to the System Tray. Pressing **Cancel** will interrupt the saving operation. When the operation is interrupted you will be returned to the previous page of the assistant where you will be given the option of changing the target directory and reselect the files to be recovered. Please note that all files that have already been successfully saved will be unselected so that you can continue to save files where you left off.

Completing the Data Recovery

After the successful recovery of files is completed, a summary of the data recovery will appear. From here you can **Open Target Folder** and immediately access the restored files.

By clicking **Finish**, O&O DiskRecovery will be closed.

About O&O SafeErase

Introduction

O&O SafeErase 3 offers you a simple and effective solution for the secure deletion of files: Simply select the files for deletion and, with the click of the mouse, overwrite the data multiple times.

Your computer then can be easily sold, given away, or recycled with the secure feeling that no data will be reconstructed or accessed.

O&O SafeErase 3 enables you to choose between a number of different algorithmic methods for the deletion of files; from the US Department of Defense (DoD) recommended method to that recommended by the German Federal Office of Information Security (BSI), a high standard in security. Using the method of deletion developed by Peter Gutmann, a renowned expert in data security, it is even possible for you to overwrite your deleted files 35 times. By today's scientific standards, this is the most secure method to delete your files giving data thieves absolutely no chance.

Important Note before Program Use

When using O&O SafeErase 3 from the O&O BlueCon CD, the following program functions are not available:

- Secure deletion over context menu
- Secure moving
- Securely emptying the recycle bin
- O&O TotalErase

Please bear in mind that data deleted with O&O SafeErase are **no longer restorable!** Please make sure that before you delete anything, that you really would like to delete the data or that you have saved a back-up copy in another location (security copy).

Data deleted just once with O&O SafeErase can never be reconstructed. Not even the use of O&O UnErase, O&O DiskRecovery, or through the application of special data recovery hardware can be used to restore this data.

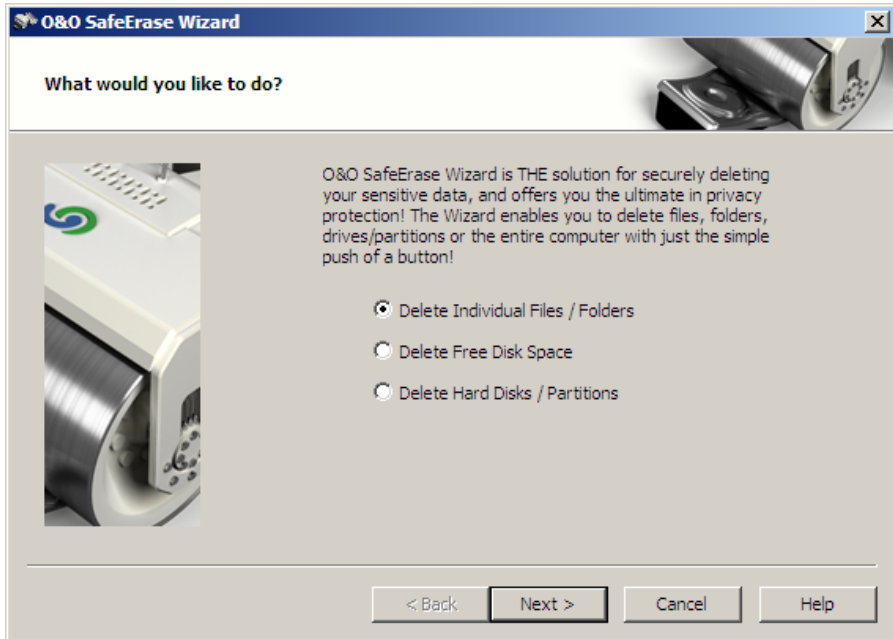
If there is even a possibility that you might need a specific piece of data, it is strongly advised that you make a back-up copy **prior to** deletion. Otherwise this data will be lost.

O&O SafeErase is not a toy to be used "just for fun". This program works and will definitely delete your data.

The O&O SafeErase Wizard

The O&O SafeErase Wizard leads you through all the program functions meaning you don't waste any time searching. You can thus delete entire directories and drives with just a few clicks of the mouse. You can also delete free disk space, so that data you presumed was already deleted can be overwritten retrospectively.

Alternatively, you can also use SafeErase over the command line. Read more on this subject in the Chapter "O&O Prompt/Command Index".



O&O SafeErase Wizard

Securely Erasing Files and Folders

1. Select Delete Individual Files/Directories in O&O SafeErase Wizard
2. In the pop-up Window, select the file or folder for deletion.
3. Then select a deletion method. Read more in the Chapter "Deletion Methods".
4. After confirmation, the selected data will be securely deleted.

Securely Erasing a Hard Disk Partition

With O&O SafeErase 3 it is now possible to securely erase entire hard disk partitions.

1. Select **Delete Hard Disks/Partitions** in **O&O SafeErase Wizard**.
2. In the pop-up Window, select the disk or partition for deletion.
3. Then select a deletion method. Read more in the Chapter “Deletion Methods”.
4. After confirmation, the selected disk/partition will be securely deleted.

Retrospective secure deletion of already deleted data

Data deleted before the installation of O&O SafeErase using Windows' standard delete function can be securely disposed of using a process dubbed Free Space Wiping. Through this process all free disk space is overwritten and already deleted files annihilated, making it possible to remove any trace of sensitive data you though had already been erased.

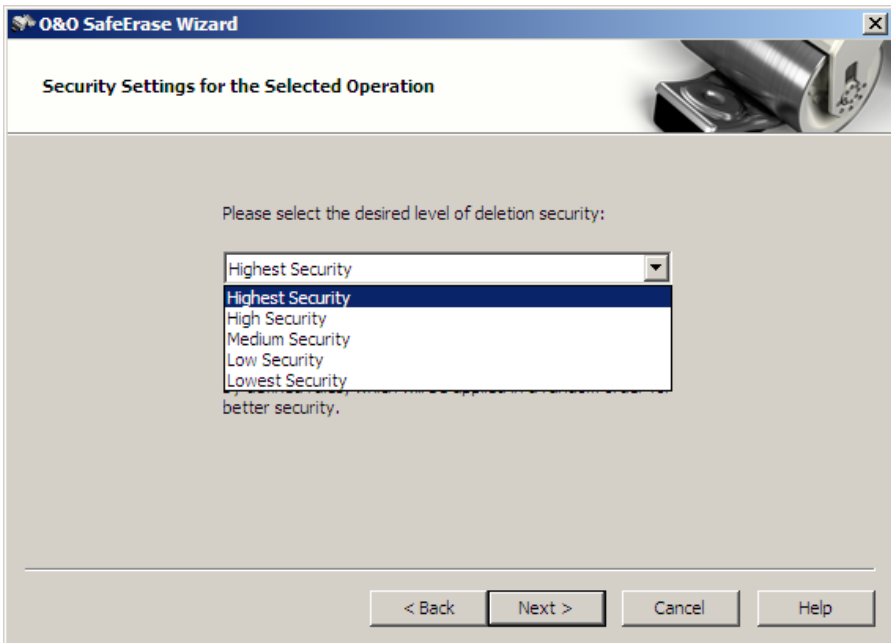
Testing Whether O&O SafeErase Really Deleted All the Data

Unless data is securely erased, the data is visible. However, to test the success of this product, it is possible to find products that can help you with this. For example, you can download the test version of O&O UnErase that specializes in finding deleted data and restoring them. It can be found on our website and is free to try.

Setting the Deletion Method

Depending on the importance of you files and then amount of time you have available to you, you can select one of five deletion processes, all offering a different level of security. The method with the highest level of security (Level 1) is set as the default.

Please note that the higher level require a longer amount of deletion time as the lower levels. The higher the level is, the higher number of deletion cycles have to be completed.



Selection of Deletion Method

Highest Security (35 Cycles)

The method that offers the highest level of security is based on a process developed by Peter Gutmann and presented in his article "Secure Deletion of Data from Magnetic and Solid-State Memory". In this method, deleted data are overwritten by a series of 35 different deletion cycles that are executed in a random order.

High Security (7 Cycles)

The method for high security is based on the January 1995 'National Industrial Security Program Operating Manual' by the DoD. In this seven cycle variation (DoD 5220.22-M ECE), data is first overwritten three times with DoD 5220.22-M (E) Standards, then with a specific random value, and finally once again with DoD 5220.22-M (E).

Moderate Security (6 Cycles)

This method for moderate security conforms to the standards of the German BSI as described in the "BSI IT Baseline Protection Manual". Data are overwritten with a random value and then with this values compliment. This procedure is completed with new random values three times.

Low Security (3 Cycles)

The method for low security but for high execution speed is based on the January 1995 'National Industry Security Program Operating Manual' from the DoD (US DoD 5220.22-M). The variation (DoD 5220.22-M E) offers 3 cycles in which the data are overwritten with first a set value, then its compliment, and then a random value.

Lowest Security (1 Cycle)

The fifth method is the fastest but offers the most limited security against unwanted data restoration. Here the data are overwritten with only a single random value in one cycle.

About O&O DiskImage

Introduction

O&O DiskImage gives you a quick and easy method of preventing any kind of data loss. With O&O DiskImage you can create regular image files of your drives, avoiding any future loss of your precious data.

O&O DiskImage enables the convenient duplication or archiving of entire operating systems and individual partitions. It even supports dynamic drives and RAID systems.

You can customize the imaging methods to suit your own individual needs. The so-called forensic imaging method lets you make a 1 to 1 image of your system. You can also analyze even unassigned sectors for deleted data at a later time. The remaining methods enable the imaging of only used sectors and exclude unimportant files from the image. Another highlight of O&O DiskImage is the incremental imaging method. This creates an image only of implemented changes to the base image. Incremental images can also be merged at a later date to form a new and current image. Because this saves a substantial amount of computer performance, you are left free to continue working on your PC parallel to the imaging!

With O&O DiskImage you can save an entire functional operating system environment, and use it on several computers. Administrators of larger networks will especially appreciate the value of this function. Software developers also use this tool regularly to test new programs on defined, standardized operating system environments.

The following chapters will explain how you can get the optimum usage from O&O DiskImage and how to get started.

We hope you enjoy our product and that it saves you valuable time, both at work and at home!

Your O&O Software GmbH Team
www.oo-software.com

Note :

When using O&O DiskImage in O&O BlueCon: O&O DiskImage is only included in the Tech Edition. A detailed user's guide can be accessed in the program itself.

Important features at a glance

- Native support of Windows x64 versions
- Utilizes the speed advantages of multi-core and multiprocessors
- High compression levels with minimum CPU demand
- Burn images to CD/DVD
- Supports all common removable data storage media

- Checks image files and drives for damage
- Native support of dynamic drives
- Secure encryption of your data (AES with up to 256-bit)
- Images can be used as virtual drives
- Checksum function for checking and distinguishing sums of images and originals
- Windows PE Version: Also starts without an operating system
- Make direct copies of drives

General Terms and Definitions

Image

An Image is a “Copy” of your drive or partition. This “Copy” contains all information from the original. A special feature of an image is that the file format is specially compressed and takes up much less disk space than the original. The more you make images of your drive, the less you need worry about data loss. Should data on the original drive be lost or damaged, with just a few mouse clicks you can restore your last image with all data onto your computer, thus recovering the original state of your drive before the last imaging.

Image File

An image can be made up of many image files (*.omg). For instance, if the storage medium you wish to put the image on is not large enough, you can split the image onto different storage media. You can also manually set the number of MB per Storage medium. When you wish to split an image onto several storage media, a new image file is created on each medium that forms part of one Image. It is vital that the media (CD/DVD) are numbered in case you wish to use the image to recover a drive or as a base image for an incremental imaging.

Incremental Image

An incremental image can be created using the Incremental Imaging Method (see also Image Options/Image Methods). Only changes to the base image are saved. A base image has to have been made previously from the drive you wish to now image incrementally (see Base Image). This method saves you time and computer performance as the image only contains recent changes. Should you have built up a number of incremental images, you can combine them to form a Base image.

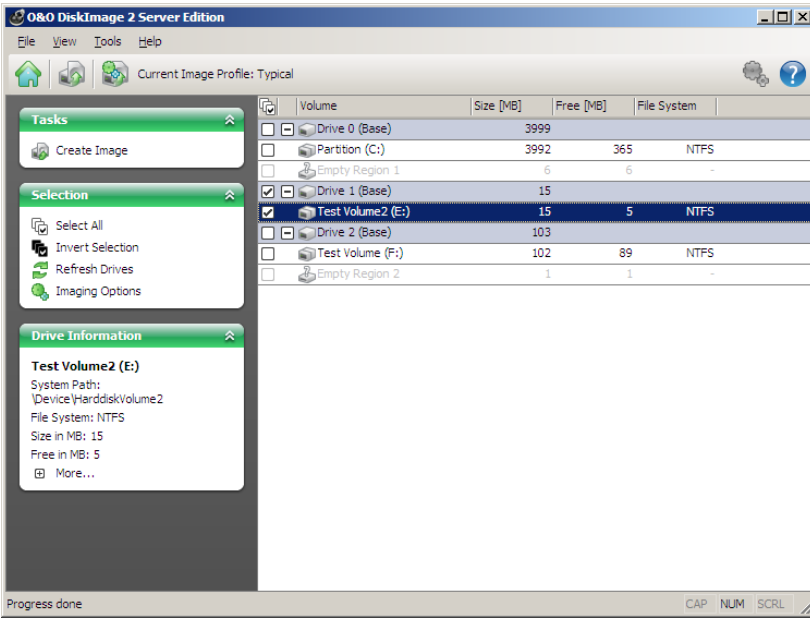
Base Image

A Base Image is an image of your drive that can be created using all imaging methods. It serves as a basis for the creation of incremental images. An incremental image can also be applied as a base image, but only when the option **Data Comparison with Checksums** under **Image Options/Advanced** is selected when creating the last incremental image. This option is a standard setting. To create an incremental image you require only the last incremental image as a basis. To restore an image you will require the entire base image as well as all the subsequent incremental images.

Create an Image

To create an Image of one or more drives, please follow the instructions below:

1. In the start screen or file menu, click on Image.

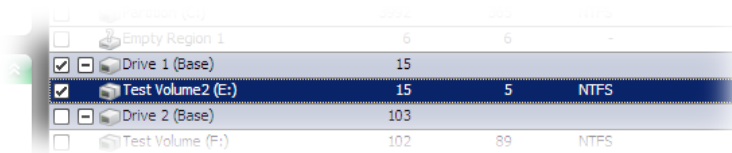


Program window for creating an Image

Note:

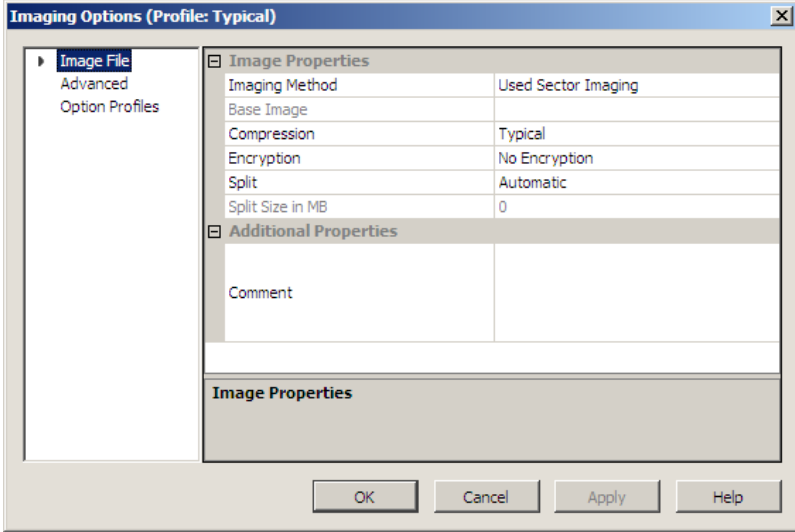
If you wish to save an image to an external hard disk, connect this to your computer before starting O&O DiskImage. It will then be displayed as a drive.

2. Select the drive for imaging by ticking the box next to it.



Select drive

3. You can create advanced settings for your image under Options.



Imaging Options

4. Click on Create Image, once you have completed the required settings.
5. Enter the target path of the drive you wish the image to be saved to. You can either accept the suggested path or select another location.
6. The Image is automatically named after the creation date. You can however enter a name manually. All information from the image will be saved, which you can later access through Image Information in the Tools list.
7. Select Start. The image file will now be created.

 **Note:**
Further settings options, i.e. Imaging Methods, can be found in the Chapter **Imaging Options**.

 **Note:**
If a drive is not large enough to store an image you will be prompted to select another. You can also at this stage rename the file, i.e. 2_Test.omg.

 **Note:**
Should not all connected drives be displayed, under **Selection** click on **Refresh Drives**.

Carry out an Incremental Imaging

An incremental image is recommended when you have already made several images of your drive. When creating an incremental image, only an image of the changes to the base image is made.

To create an incremental image, you must have first created a Base Image of the respective drive. As a base image you can use either a “complete” image, using the methods “Used Sector Imaging”, “Forensic” or “Direct Forensic”, or by using a previously created incremental image. The last option is only possible when the option **Data Comparison with Checksums** was selected when creating the last incremental image. This option is a standard setting. An incremental image can then be applied as a base image.

Follow the instructions below:

1. Please make sure that the drive containing the base image is connected to your computer.
2. Click on **Incremental Image** in the start screen of O&O DiskImage.
3. A pop-up window will open where you can select your base image. You can find all details of the Image under **Image Information** and the related **Drive Information**.
4. Click then on **Create Image**.
5. Click the button to the right and the available drives will be displayed. The last image file in the drive is normally displayed automatically. If not, please enter the target path manually or browse through the other drives.
6. The Image is automatically named after the creation date. You can however enter a name manually. All information from the image will be saved, which you can later access through **Image Information** in the Tools list.
7. Now click on **Open** and then on **Start**. An incremental image will be created from the base image. The Imaging Method of the original “complete” image, e.g. Used Sector Imaging, remains the same and cannot be amended.

Note:

An incremental image can only be used as a base image when Data Comparison with Checksums is set. See Image Options/Advanced.

Note:

If the drive with your base image is not displayed, under Select click on Refresh Drives.

Copy a Drive

This function enables you to take a copy of an entire drive with all the saved data, and without having to create image files. The drive is then saved on a selected storage medium as a proper drive without compression.

The “advantage” of a copy as opposed to the creation of an Image is that you cut out the diversion through the image file. You can directly access the copy of the drive without having to restore the drive itself. You do however require much more disk space for a copy as you do for an image.



Important:

- When copying your Drive (Source Drive) the selected target drive will be overwritten. You should therefore save your copy on an external hard disk, for example, either in a free area or overwrite a previously selected drive purely for this purpose.
1. Select Copy Drive from the start page.
 2. Select from the list the drive you wish to copy.
 3. Select a location for the copy from the right-hand column.
 4. Click on Start Copy and confirm your entries.

You can also “reverse” your copy in exactly the same fashion.



Note:

You can apply further settings for the copy process under **Copying Options**. See also the Chapter **Copying Options**.

Restore an Image

If you wish to transfer an existing image to your computer, click on Restore on the home-page or in the file menu. Advanced settings can be found under Options.



Important:

- During restoration, the image overwrites your selected drive with the drive data contained within the image. All data on the target drive is lost and replaced by the image. Please therefore make absolutely certain that you wish to overwrite the target drive.

You can access all information on your newly created image in **Image Information** and the related **Drive Information**. You can also apply further settings under **Restoration Options**.

To restore an Image, please follow the instructions below:

1. Please make sure that the drive containing the image is connected to your computer.
2. Under Tasks click on Select Image.
3. A window appears with the drive and image file. Should the image file presented not match the one required, browse through your drives and enter the path to the image file. (*.omg).
4. Select Open.
5. Now click on either Select Target or Suggest Target.
6. Select a target drive for the image file. You can either replace an existing volume or create a new volume with a new name.
7. Now click on Restore Image.
8. Click on Start in the program window. The image file will now be transferred to the computer.



Note:

If you split your image onto various storage media, all such media will be required for a restoration. If you have opted to make an incremental image, all images from the original base image to all subsequent incremental images will be required.



Note:

When you wish to restore a system drive, you must use the O&O DiskImage Start CD and start the restoration from there.



Note:

Should the drive containing the image files not be displayed, under Selection click on Refresh Drives.

O&O Support and Contact

Technical Support

To receive more information about O&O BlueCon, please visit our website, www.oo-software.com, and get the latest information about product developments and support. Also included on our website are regularly updated FAQs and Knowledge Bases that offer the most common problems and questions regarding our products.

All registered customers receive installation and product support free of charge for the first 90 days after registration. When contacting our support department, please do not forget to have your registration code ready.

In addition, it may be helpful to read our frequently asked questions (FAQ) section of our website before you contact our support department. It is always possible that your specific question or problem may have already been addressed.

Authorized Resellers

For answers to all questions regarding the licensing and purchase of our software products, our authorized reseller partners in over 30 countries stand ready to assist you. Their names and addresses may be found at our website under the 'Purchase' heading. We would also be more than happy to assist you in finding the partner closest to you.

O&O Software GmbH
Am Borsigturm 48
13507 Berlin
Germany

Tel +49 (0)30 4303 4303

Fax +49 (0)30 4303 4399

E-mail info@oo-software.com

sales@oo-software.com

Web www.oo-software.com

Software License Agreement

IMPORTANT – PLEASE READ CAREFULLY

This end user license agreement is a legally binding contract between yourself (as a natural or a legal person) and the company O&O Software GmbH (O&O) for the software product named herein. By installing the software product, you declare your agreement with all conditions of the license agreement.

If you do not agree with the conditions of the license agreement, you are not entitled to use the software product. Should this be the case, you can return the software product along with a copy of the invoice or receipt to the distributor from whom the product was purchased in exchange for a full refund.

The software product is protected by copyright laws and international copyright contracts as well as other laws and agreements concerning intellectual property.

IMPORTANT NOTE

The Microsoft® Windows® Preinstallation Environment 2.0 software included with this device or software may be used for boot, diagnostic, setup, restoration, installation, configuration, test or disaster recovery purposes only.

NOTE:

THIS SOFTWARE CONTAINS A SECURITY FEATURE THAT WILL CAUSE END USER'S SYSTEM TO REBOOT WITHOUT PRIOR NOTIFICATION TO THE END USER AFTER 72 HOURS OF CONTINUOUS USE.

1. Subject of the contract

The subject of this contract is the computer program, the description thereof and the user manual as well as any other accompanying written material. This will henceforth also be referred to as "software".

O&O wishes to point out that, at the current state of technology, it is not possible to create software that works perfectly in all applications and combinations. The subject of this contract is therefore a software program that is fundamentally fit for the purposes detailed in the description and the user manual.

2. License granting

For the duration of this contract, O&O grants you the simple, non-exclusive and personal right (henceforth referred to as "license") to use a copy of the software on a single computer. Repeated and deliberate installation, use, and subsequent uninstallation on various computers (floating license) is prohibited, unless otherwise explicitly authorized.

This software product may only be used in accordance with the guidelines set out for each license purchased. The following licenses exist for O&O BlueCon 7:

(a) O&O BlueCon 7 Admin Edition

You are authorized to install and use the software product on all computers a) in the possession of the company (legal person or natural person(s) in the case of corporations) owning the license and b) all located at a single site. This license is bound to a single natural person and is non-transferable, unless the transfer is a long-term transfer as stipulated in section 3.

(b) O&O BlueCon 7 Tech Edition

You are authorized to install and use the software product on all computers. This includes computers that do not belong to the company owning the license (a.k.a. Service Technician's License). This license is bound to a single natural person and is non-transferable, unless the transfer is a long-term transfer as stipulated in section 3.

3. Description of further rights and limits

The license-holder is prohibited from:

- (a) altering, translating, reverse-developing, decompiling or disassembling the software without the advance written permission of O&O,
- (b) creating products derived from the software or making copies of the written material, translating or altering the written material or creating products derived from the written material,
- (c) distributing copies of the software to third parties,
- (d) changing or removing the copyright mark on the copies of the software,
- (e) renting out, leasing out - or lending of the software.

The license holder is permitted to transfer all rights from this license agreement permanently to another person, provided that the recipient also agrees to all conditions of this license.

The license holder must use the software only in compliance with all relevant laws and international treaties

4. Ownership of rights

Any ownership rights applying to the software, including but not limited to copyright laws, belong to O&O as well as to the Rights Owners of products included and/or integrated in the Software. All rights not otherwise stated belong to O&O as well as the rights of the owners of products included and/or integrated in the software.

The purchase of a license for a product simply grants a right to use the software as described in the conditions of the license agreement. This does not imply a right to the software itself. In particular, O&O reserves all publication, multiplication, processing and utilization rights to the software.

5. Reproduction

The software and accompanying written material are protected by copyright laws. The user has the right to create copies of the software for back-up and archiving purposes. He or she is thereby also obliged to reproduce O&O's copyright mark on the physical medium or in the program. A copyright mark present in the software may not be removed. Copying or reproducing the software in original or altered form, or merged with or included in other software, is explicitly forbidden.

6. Length of the agreement

This agreement is valid indefinitely. The right of a license-holder to use this software is removed automatically and without notice if he or she violates one of the terms of this agreement. At the end of the period of right to use, the license-holder is obliged to destroy the software, all copies of the software, and the written material.

7. Compensation for breach of contract

O&O would like to point out that you are responsible for any damages arising from breach of copyright if you violate these contract terms.

8. Changes and Updates

O&O is entitled to update the software as it wishes. O&O is not obliged to make updated versions available to license holders who have not registered their product with O&O, or who have not paid the update fee. Any additional software code that is made available to you as an update is considered a part of the software and is therefore subject to the terms of this agreement.

9. O&O's Guarantees and Responsibility

- (a) O&O guarantees the original license-holder that the data medium carrying the software is free of errors at the point of delivery, assuming normal operating conditions and a normal level of maintenance.
- (b) If the delivered data carrier is faulty, the purchaser can demand a replacement during the 24-month warranty period. For this, he or she must return the data carrier, any back-up copies and the written material along with a copy of the invoice or receipt to O&O or to the dealer where the product was purchased.
- (c) If a fault as described in clause 9 b is not corrected by means of a replacement delivery within a reasonable time period, the purchaser can demand either that the sale price be reduced or that the contract be cancelled.
- (d) For these reasons and for those mentioned in clause 1 of this contract, O&O accepts no responsibility for mistakes in the software. In particular, O&O does not guarantee that the software will meet the particular requirements and demands of the purchaser or that it will function together with other software he or she has chosen. The purchaser is responsible for the correct choice of software and the consequences of the use of that software, as well as the results aimed at or intended. The same principle applies to the written material that accompanies the software. If the software is fundamentally unfit for use as described in clause 1, the customer has the right to cancel the contract. O&O has the same right should the creation of software that is fundamentally fit for use as described in clause 1 not be practically possible.

(e) O&O is not responsible for any damages, unless such damages are caused deliberately or arise from gross negligence on the part of O&O. In contracts with traders, an assumption of responsibility for gross negligence is excluded. This does not apply to assurances by O&O that refer to specific characteristics. Responsibility for damages not included in such an assurance will not be accepted.

10. Competency

The Laws of the Federal Republic of Germany apply to this contract. Court of Jurisdiction is Berlin.

If you have any questions regarding the licensing of O&O software or you wish to contact O&O, please get in touch with us as follows:

O&O Software GmbH
Am Borsigturm 48
13507 Berlin
Germany

Tel +49 (0)30 4303 4303

Fax +49 (0)30 4303 4399

E-mail info@oo-software.com

sales@oo-software.com

Web www.oo-software.com