

 O&O DiskImage 5

Copyrights

Text, illustrations and examples have been produced with great care. The editor is neither legally nor in any other way liable for incorrect information given and its possible consequences.

This document is protected by copyright. All rights reserved. Without written approval no part of this document may be reproduced through photocopying, microfilming or any other procedure, nor may it be translated into a language used by machines, especially data-processing plants. Rights are likewise reserved for quotation in lectures, on radio and television.

Microsoft, Windows 2000, Windows XP, Windows Vista, Windows 7, Windows 2003, Windows 2008 und Windows 2008 R2 sind eingetragene Warenzeichen der Firma Microsoft Corp., Redmond, WA, USA. O&O and the O&O-logo are registered trademarks of the O&O Software GmbH, Berlin.

Rev. 1/8/2010 1:28 PM

©2005-2010 O&O Software GmbH • Am Borsigturm 48 • 13507 Berlin • Germany

<http://www.oo-software.com>

Contents

About O&O DiskImage 5	1
Features at a glance.....	1
Differences between the three Editions.....	4
Additional properties of the Workstation and Server Editions.....	5
System requirements	6
Installation	7
Information about licensing.....	7
Enter license.....	7
Uninstallation.....	8
Updates for O&O DiskImage.....	9
Online registration	10
What are the advantages of registering online?.....	10
How do I register online?.....	11
General Terms and Definitions	12
Drive/Partition.....	12
Image.....	12
Image File.....	12
Complete image.....	13
Image of the changes.....	13
Differential Images.....	13
Incremental Images.....	13
Base Image.....	14
Getting started	15
One-click imaging - Create an image of the entire computer.....	16
Create an Image of your drive.....	17
DiskView.....	19

Image restoration.....	19
Create image of the changes.....	21
Cloning a drive.....	21
Start O&O DiskImage directly from CD.....	24
Loading drivers.....	25
Program settings.....	27
General - Change default settings.....	28
Security - Network authentication.....	29
Reset security confirmations.....	30
Explanation: Password management.....	30
Network authentication.....	31
Settings for notification.....	32
Security - Change default settings and behavior.....	33
Changing behavior for Restoration.....	34
Changing behavior for Cloning.....	35
Change behavior for jobs.....	36
Settings for reports.....	36
TrayIcon.....	37
Tools.....	39
Mount virtual drive.....	39
Unmount drive.....	41
Convert image file.....	41
Merging images (OMG).....	41
Handling virtual hard disks(VHD).....	41
Merge incremental images.....	42
Validate image file.....	42
Check for drive errors.....	43

Save images onto CD/DVD.....	43
Map/Disconnect Network Drive.....	44
Change computer properties.....	45
Settings for restoration on different hardware.....	46
Schedule functions.....	48
Creating a job – General information.....	48
Scheduling.....	49
Notification.....	50
Settings for a Job.....	51
Disable user inquiries while job is being run.....	52
Abort entire job when an error occurs.....	53
Run after job is completed.....	53
Characteristics of an imaging job.....	53
Create a job for incremental or differential imaging.....	53
Run commands before and after a job.....	54
Job information.....	54
Editing jobs.....	54
Checking a job.....	55
Delete Job.....	55
Run jobs.....	55
Export jobs.....	55
Import jobs.....	55
Reports.....	55
Image settings.....	57
Selecting imaging methods.....	58
Used sector imaging.....	58
Image of the changes.....	58

Forsensic Imaging.....	58
Direct Forensic.....	59
Specify the size of an image file.....	59
Encrypting image.....	59
Compress image.....	59
Exclude files from an image.....	60
Exclude data from compression.....	60
Lock a drive.....	61
Ignoring bad sectors.....	62
Data comparison with checksums.....	62
Create an image profile.....	62
Restoration options.....	63
Write over unused sectors.....	63
Creating a restoration profile.....	64
Force writing method.....	64
Settings for cloning drives.....	65
Set read method.....	66
Lock a drive.....	66
Ignoring bad sectors.....	66
Write over unused sectors.....	66
Force writing method.....	66
Create a profile for cloning.....	67
Frequently asked questions.....	68
Frequent questions on authentication.....	70
Behavior when receiving error notices.....	73
Support and Contact.....	75
Authorized resellers.....	75

About O&O DiskImage 5

Thank you for choosing O&O DiskImage!

This is something you probably know all too well: how suddenly important data can be lost as a result of a system crash or viral attack. O&O DiskImage is the ideal tool for quickly and easily taking the trouble out of such inconveniences! O&O DiskImage enables the convenient duplication or archiving of entire operating systems and individual disks. It even supports dynamic drives and RAID systems.

Create image files of your drives on a regular basis and you'll be fully protected against data loss!

You can customize the imaging methods to suit your own individual needs. Even a 1:1 image of your system or user-defined images are possible. O&O DiskImage features many other options for creating and restoring images exactly the way you'd like. As a result of the special O&O DiskImage program settings, a substantial amount of computer performance is saved, allowing you to continue working on your PC parallel to the imaging!

The following chapters will explain how you can get started and obtain the optimum usage from O&O DiskImage.

We hope you enjoy our product and that it saves you valuable time, both at work and at home!

Yours O&O Software

<http://www.oo-software.com>

Quick Start

- [One-click imaging - Create an image of the entire computer](#)
- [Create an image of your drive](#)
- [Image restoration](#)
- [Save images onto CD/DVD](#)
- [Create new job](#)
- [Mount image file as a drive](#)
- [O&O DiskImage direkt von CD starten](#)

Note: The Start CD, designed for running O&O DiskImage without an operating system and for restoring a system partition, is not included in the Special Edition.

Features at a glance

O&O DiskImage is a reliable and affordable solution for protecting your personal and professional data. It offers everything needed to protect your data the best way possible. You have it all: from the imaging and restoration of entire server systems to the restoration of individual files.

Along with a finer tuning of existing program components, you'll find quite a number of new and helpful features waiting for you in Version 5.

NEW: One-click-imaging

One-click imaging is the fastest and easiest way of creating a complete image of all your data and settings, including the system partition. One-click imaging is especially useful if you are using O&O DiskImage for the very first time or have never created an image of your computer.

NEW: M.I.R.- Machine Independent Restoration

The Machine Independent Restoration technology allows you to perform restoration of system images on differing types of hardware. This means that a restoration of a system images or clones can be carried out not only on devices with identical hardware, but on ones where, for example, the motherboard or processor has been replaced. You can read more about this in the document "Machine Independent Restoration".

NEW: Email notification about the running of tasks

The notification feature is an option that will keep you informed about the status of a task such as the running of a job. You'll also be immediately notified about errors so that you can identify and resolve them faster.

NEW: Improved user guidance with the Information Bar

The Information Bar guides you through selected tasks and lets you know what to do next. It'll also provide important information about the running of tasks. You also have the option of hiding the Information Bar.

Imaging while system is in operation

Up until now, the kind of maintenance needed for imaging could take up to half a day and prevent your server or computer from running at full capacity. O&O DiskImage now allows you to create reliable images of individual disks and entire systems without interfering in server operation* or the user's activity. The Snapshot function with integrated buffer memory guarantees that imaged data remains exactly the way it was when the image was created: Changes to the data made by applications or users will have no effect on the image being created. This is the only way to ensure consistent images from systems that must be available without interruption on a permanent basis.

After imaging, all your data and installation environments will be ready for you whenever there's a serious problem with your workstations or servers. And thanks to the O&O DiskImage Start CD (BareMetal-Technology), without the need for any previous installation as well.

* The imaging and restoration of server systems is only possible with the O&O DiskImage Server Edition.

Imaging methods for all purposes

Various imaging methods allow the image to be adapted for use as the need arises. You get a space-saving image by selecting the setting "Used sector". On the other hand, if you want to rescue data from a damaged hard disk, we recommend a forensic image whereby all sectors will be imaged exactly as they are allocated, including their contents. This will allow you to recover data later, using special software such as O&O DiskRecovery, without affecting the original disk.

After creating a base image, you can then create incremental or differential images to save any changes made since the last image.

Conveniently work across a network

O&O DiskImage gives you the option of saving an image on network drives. All you have to do is make a network authentication.

The truly special feature of the O&O DiskImage Workstation and Server Editions is their interface with O&O Enterprise Management Console. You can install and plan your jobs for O&O DiskImage from one central location within the network. Further information can be found in the chapter [Additional properties of the Server and Workstation Editions](#).

Clone drive

This feature will allow clones of entire disks or individual drives to be used in place of their originals. Cloning will give you exact replicas of disks or individual drives, including the data stored on them, but without creating any image files. A clone does, however, require considerably more storage space than an image.

Unlike images, no incremental or differential clone can be created as a way of reducing the data volume. What's more, a clone cannot be compressed and/or encrypted to make data unusable for non-authorized users, the way images can.

Job management for automated, periodic imaging

O&O DiskImage lets you schedule tasks very easily. With the help of a clearly laid-out Wizard, you can arrange for your data to be imaged automatically at specific intervals.

Restoration of entire computers and individual drives

Restoring your data is just as easy as creating an image. To restore data drives, just start O&O DiskImage under Windows. If you want to restore an entire computer, including its operating system and all applications, run O&O DiskImage directly from the Start CD. The supplementary, integrated system recovery tools even offer you the chance to restore the original system and identify errors.

A functioning operating system is not needed for starting O&O DiskImage directly from CD. The CD includes a bootable Windows operating system, including all the required standard drivers. Whenever special hardware is not recognized, a Wizard will help you load additional drivers, e.g. for controllers or network cards.

Restoration of individual files

You can also quickly and easily restore single files from an image. Just mount drives from the image as virtual drives. Doing this will allow you to copy files and folders from the image onto existing drives. Making changes to the image, however, such as deleting or adding files, is not possible.

Transfer system environment onto a new computer

O&O DiskImage can also make your life easier when installing/configuring newly acquired computers. After you've setup your computer, image the entire system and then transfer this image onto all additional machines.

Using the Command Interpreter (Script capability)

The O&O DiskImage Command Interpreter allows you to manage disks, partitions, volumes, and/or images using command files. All scenarios directly or indirectly depicted by O&O DiskImage can be re-enacted in that way. This function is only available for the **Workstation and Server Editions**. The PDF about the Command Interpreter is included with delivery, and provides an overview of all commands and their possible uses.

Supports the most current technologies

O&O Software is always right on track with the latest developments in technology. All current Windows systems and 64-bit versions are supported, which means the creation and restoration of images can be done even faster.

DiskView

A new interactive graphical display provides an overview of the entire hard disk. Both free and used disk space will be visible, as will the size of any individual partitions.

Compression types

Along with LZNT1 compression, it's now possible to use BZIP2 on the image.

Handling of virtual hard disks (VHD)

To make working with Microsoft Virtual PCs (VPC) easier, you can now convert image files into virtual drives (VHD). The converted image can be integrated as a virtual drive in the VPC, without having to install O&O DiskImage. In a similar way, images (OMG) can be created from virtual drives (VHD) of VPCs, or can be restored directly.

Integrated Burner

In addition to CD/DVDs, the integrated burner of O&O DiskImage also supports Blu-Ray Disks and HD/DVD's.

Change computer properties

O&O DiskImage will let you change the identity of your computer to avoid authentication problems, i.e., when the same computer identity already exists in the network. This can be useful when creating several system images in a network.

TrayIcon

The new TrayIcon monitors the service status and keeps you informed about active program functions. This will help prevent you from unintentionally aborting an O&O DiskImage task that is being run in the background.

Validation

A checksum comparison of the data will also be performed while the image is being checked.

Additional features:

- Reporting (Job/Parameter/Timing)
- Supports Windows Vista and Server 2008 R2 (Server Edition only)
- Base operating system with integrated system recovery tools for starting directly from CD, without Windows.
- Secure encryption of your data (AES with up to 256-bit)
- Integrated burn function for archiving images on CD/DVD
- Check drives and images for errors and inconsistencies
- Exclude Files
- Convert Image
- Utilizes the speed advantages of multi-core and multiprocessors
- Images of hard disks can be saved on standard removable drives
- Checksum function for checking the identity of images and originals
- Native support of dynamic drives
- And much, much more...

Differences between the three Editions

O&O DiskImage 5 is available in three Editions:

About O&O DiskImage 5

- O&O DiskImage 5 Professional Edition
- O&O DiskImage 5 Workstation Edition and
- O&O DiskImage 5 Server Edition

The Professional Edition is intended for imaging a desktop computer or individual drives. It cannot be used on a server operating system and has no network capabilities.

The Workstation Edition contains interfaces for running O&O DiskImage across a network in conjunction with O&O Enterprise Management Console 2. The Workstation Edition can only be applied on desktop computers.

The Server Edition contains interfaces for running O&O DiskImage across a network in conjunction with O&O Enterprise Management Console. It can be used on both servers and workstations, the latter making more sense when the administrator wishes to control and monitor the defragmentation process from his computer.

Additional properties of the Workstation and Server Editions

You can run the following network functions when using O&O DiskImage Workstation and Server Editions in conjunction with O&O Enterprise Management Console:

- Images of the entire business network
- Manage your computers in sites
- Define settings for sites
- Plan a schedule for the automatic imaging of computers or sites across a network, with just a few clicks of the mouse
- Automatic remote installation of O&O DiskImage on network computers
- Execute Windows commands (batches) before and after the running of a job across a network

The O&O Enterprise Management Console is part of your software delivery when you have acquired licenses in the O&O EasyLicensing volume license program. We will happily advise you on applying O&O Enterprise Management Console in your company.

E-Mail: sales@oo-software.com

System requirements

- The system requirement of each operating system have to be fulfilled
- 30 MB free hard disk space
- Supported by 32 Bit/64 Bit
- Windows® 2000 till Windows® Server 2008 R2 (all Editions):

	Professional Edition/ Special Edition	Workstation Edition	Server edition
Windows® 7	yes	yes	yes
Windows® Vista®	yes	yes	yes
Windows® XP	yes	yes	yes
Windows® 2000 Professional	yes	yes	yes
Windows® 2000 Server	no	no	yes
Windows® Server 2003	no	no	yes
Windows® Server 2008	no	no	yes
Windows® Server 2008 R2	no	no	yes

Note: For booting with the Start CD at least 1GB RAM is necessary.

Permissions

In order to install and register O&O DiskImage you must be a member of a local administrator group or possess an equivalent level of permissions. Domain Administrators normally already possess these permissions.

Installation

Note: Please make sure that no other backup or imaging software is installed on your computer when installing or working with O&O DiskImage. This can lead to complications with the filter driver, especially when different software is working simultaneously on the same drive.

Installing O&O DiskImage is very straight forward. Please follow the steps below:

- Start the computer on which you would like to install O&O DiskImage.
- Login as local administrator or as a user possessing comparable permissions.
- Start the installation file (SETUP.EXE) from O&O DiskImage, which you have either downloaded from our server or have on your personal CD ROM.
- After the setup program has been successfully initialized, please follow the installation dialog.
- When prompted, restart your computer.

Information about licensing

You can test O&O DiskImage for 30 days free of charge and with no obligation. The remaining trial period will be displayed each time you start the program.

If you would like to implement O&O DiskImage in your company or as a technician for your customers, then please contact our resellers or distributors.

Enter license

Note: In order to activate the product after installation or to gain access to the Full Version at a later time, you must possess a valid license key. This license key is also called a registration code, serial number, or product ID. If you do not enter a valid license key, you can still use O&O DiskImage as a fully functional trial version for up to a maximum of 30 days. Should you have any questions, please contact our Support Team.

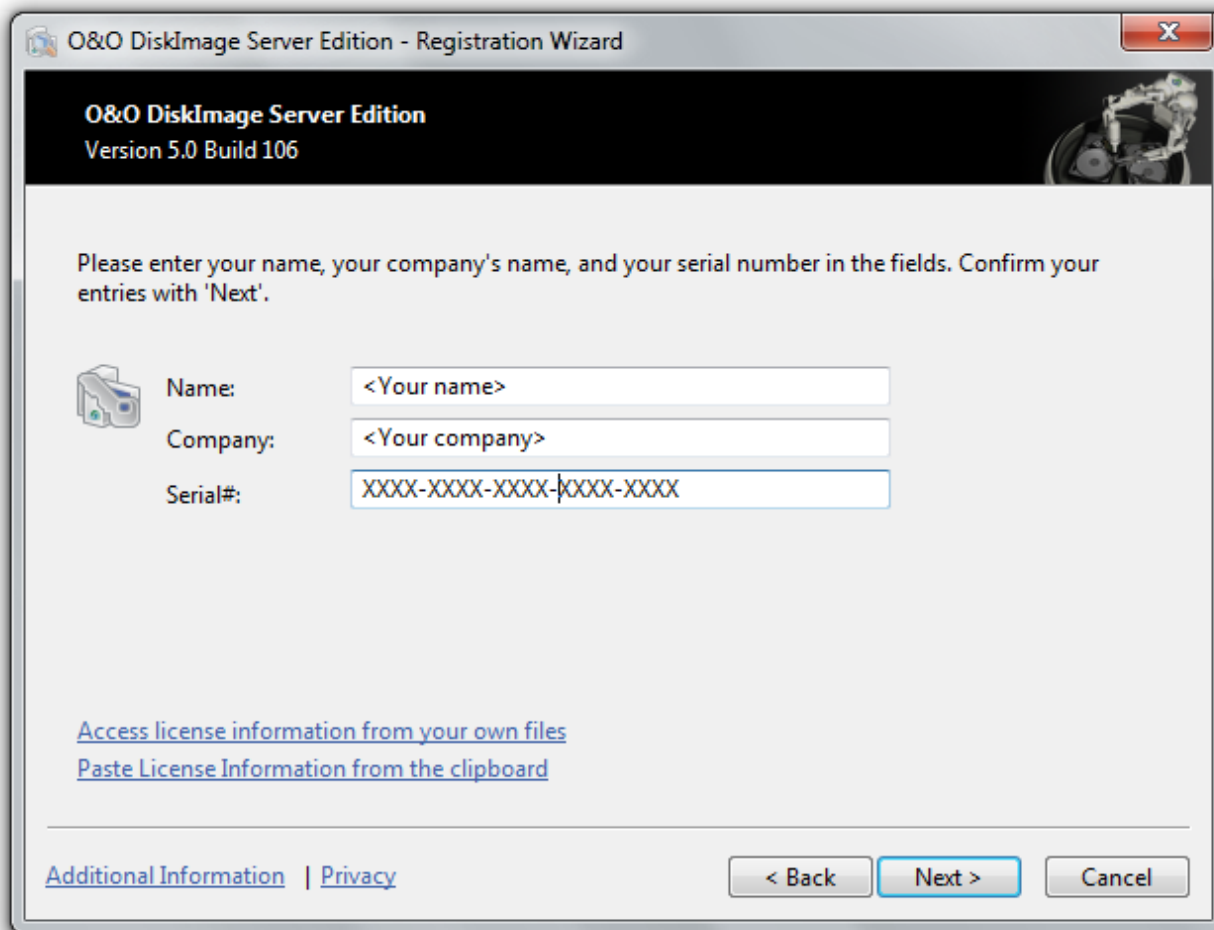
The dialog for registration always appears automatically at the start to guide you if you are using an unregistered version or have entered the registration code incorrectly.

The registration wizard allows for a simple registration process.

When you select the option **Enter your registration code**, a dialog box will appear where you can enter the registration code you received when purchasing the software.

- If you have purchased the software **as download**, please enter the license information ("Name", "Company" and License key), just as they are written in the confirmation E-Mail you received.
 - If you have purchased the software as **Box version**, please enter the license key as it is written on the license card included. In addition, please enter the your name and if needed your company.
1. Please make sure that you do not confuse the digit "1" with "l" or enter any empty spaces where they don't belong.
 2. Press **Next** to save the registration data or **Cancel** to leave the dialog window without saving the data.
 3. When you have correctly entered the license code you will receive a confirmation in the dialog window.

Should you run into any problems when entering your registration code, please contact our Support Team.



Registration wizard: Enter the license key

Uninstallation

To remove O&O DiskImage from your computer, please follow the instructions below:

1. Open the **Control Panel** from the **Start menu** and select **Software**.
2. Select **O&O DiskImage** from the list of installed software programs and then click **Change**. In the InstallShield Wizard click **Next**.
3. In the next dialog select the option **Remove program**.
4. Enable **Remove the O&O DiskImage user data** if you want these to be removed during uninstallation.
5. Confirm the uninstallation of O&O DiskImage with **Remove**. You'll receive a confirmation notice when uninstallation is completed.
6. When prompted, you'll have to restart the computer in order to apply all settings after a successful uninstallation.

Updates for O&O DiskImage

If you want to update O&O DiskImage to a newer version, you'll need the license key. Please follow the following directions:

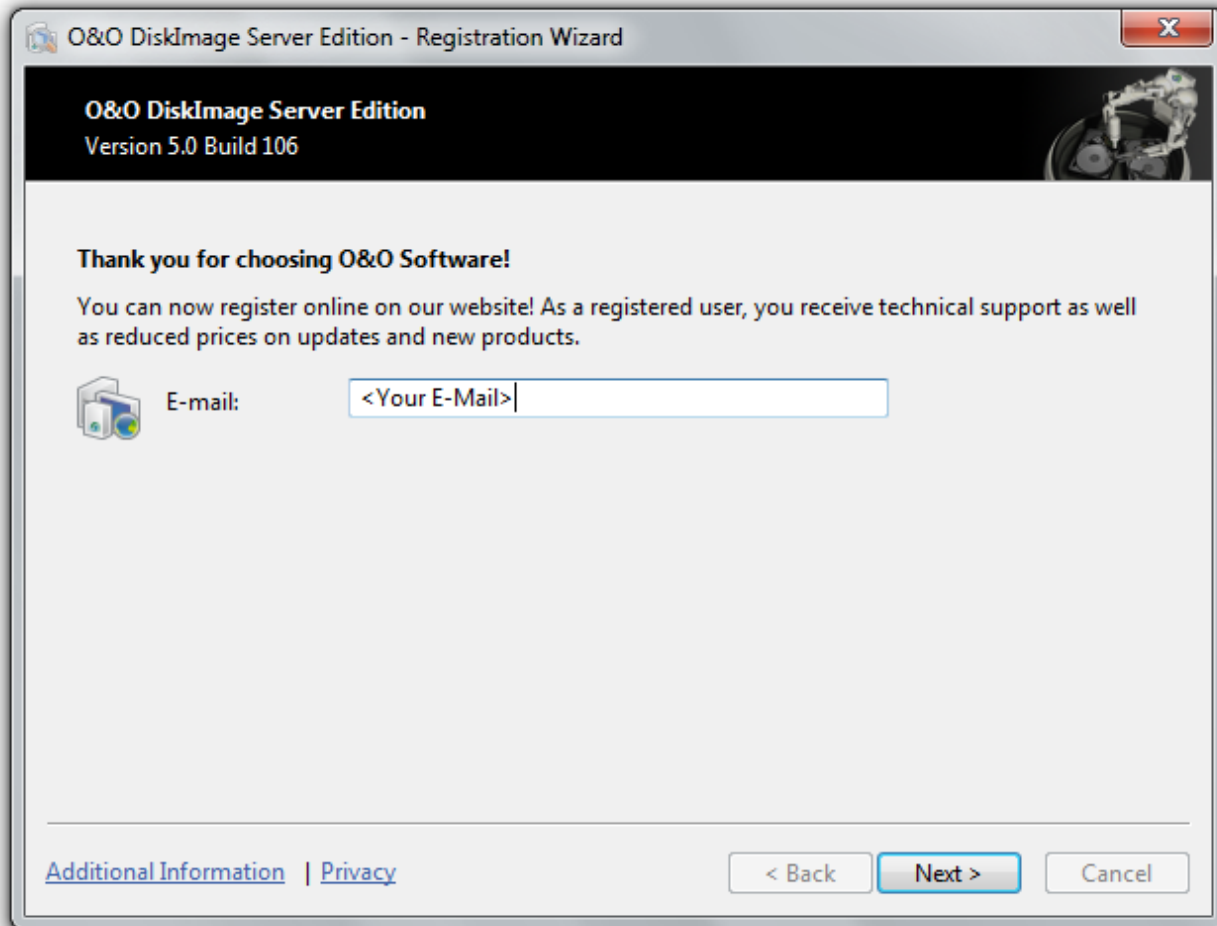
1. First uninstall the previous version of O&O DiskImage.
2. Start the O&O DiskImage installation.
3. Complete the O&O DiskImage installation in the normal way.
4. Once finished, the new version is fully installed.
5. Restart the computer, when asked to do so.

Important! Only when using O&O DiskImage in the network: When performing a major update, then you will have to secure the password file (copy) if the authentication data will be adopted. After a full installation and the restart, you have to place the password file in the standard directory of O&O DiskImage. Afterwards, the password management has to be started after the restart and the password has to be entered for the password file. The needed initialisations will be run and the automatic authentication is still possible.

Online registration

In order to register online, you will need the license key, which you have received when you purchased the program.

If you'd like to register online, start the O&O program. The questions related to online registration always appear at the start, provided you haven't registered online.



Online registration

More:

[What are the advantages of registering online](#)

[How do I register online?](#)

What are the advantages of registering online?

Online registration gives you the benefit of having your customer data kept safely in our files, which means we can provide you with even better service. This comes in very handy if, for example, you're unable to find the access code to

Online registration

your product. You can then quickly and easily request it from us. You will need the license key for updates or if you reinstall your O&O programs because you had to set up your computer again.

Further advantages will let you:

- Be supplied with the latest information about our products
- Make free updates on new versions of purchased items (minor updates)
- Upgrade to a new version at a special discount price (major update)
- Obtain support from our customer service
- And much, much more...

How do I register online?

If your O&O program was purchased on our Online Shop, you've automatically registered with us. If it was purchased through a dealer, you'll be asked during installment if you'd like to register. You then have the option of either registering immediately or at another time. All you'll need is a functioning Internet connection and a valid license key.

You may also complete the registration form right here:

<http://www.oo-software.com/register>

Just return the completed online form by clicking "Send" and you'll be eligible to take full advantage of our O&O Customer Service.

General Terms and Definitions

To simplify working with O&O DiskImage, certain terms will be explained in the following chapters:

[Drive/Partition](#)

[Image](#)

[Image File](#)

[Complete Image](#)

[Image of the changes](#)

[Base Image](#)

Drive/Partition

A drive is a reserved area of the hard disk. Multiple drives can be found on a hard disk. In the following text, the term "drive" will be used to depict (single) partitions as well as logical drives in expanded partitions and volumes.

Drives are used, for example, to separate documents from programs. A division in two partitions has become generally accepted:

- Drive C: for operating systems and programs
- Drive D: for documents, e.g. photos, Office documents, music, etc.

This makes it easier to image data using data imaging products such as O&O DiskImage.

Image

An image is a "copy" of your drive or partition. This "copy" contains all information taken from the original. A special feature of an image is that the file format is especially compressed and takes up much less disk space than the original. The more often you create images of your drive, the less you need worry about data loss. Should data on the original drive be lost or damaged, you can restore your last image with all its data onto your computer. With just a few clicks of the mouse, you can recover the original status of your drive before the last imaging.

An image can be made up of many [image files](#) (*.omg). For example then, when a storage medium cannot hold an image, and it will have to be stored on two storage media.

Image File

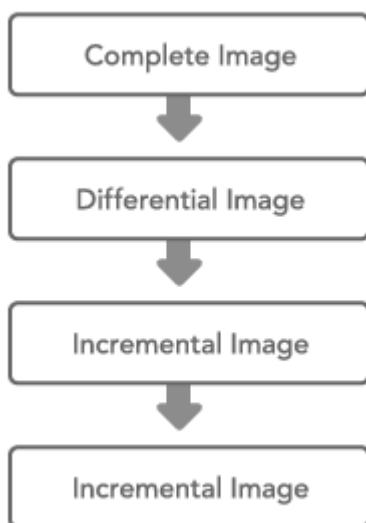
An image can be made up of many image files (*.omg). For instance, if the storage medium you wish to put the image on is not large enough, you can split the image onto different storage media. When you wish to split an image onto several storage volumes, a new image file is created on each volume that forms part of one image. It is vital that the volumes (CD/DVD) are numbered in case you wish to recover a drive with the image or use it as a base image for an incremental imaging.

Complete image

Using the Complete image method, the data selected for imaging will be imaged all over again and stored in a folder on the target disk . Complete images can be created using the "Used sector", "Forensic", or "Direct forensic" methods.

Image of the changes

If you only want to image the changes made to your hard disk or data drives, you must have at least one [complete image](#) of these drives available. The changes can be saved as [differential](#) and [incremental](#) images.



Correlation between image types

More:

[Differential Images](#)

[Incremental Images](#)

Differential Images

Differential images compare present data with the last complete image and store only the changes. The first "successive" image after the complete image is always a differential image. To restore a differential image, you will need both the complete image and the differential image.

Incremental Images

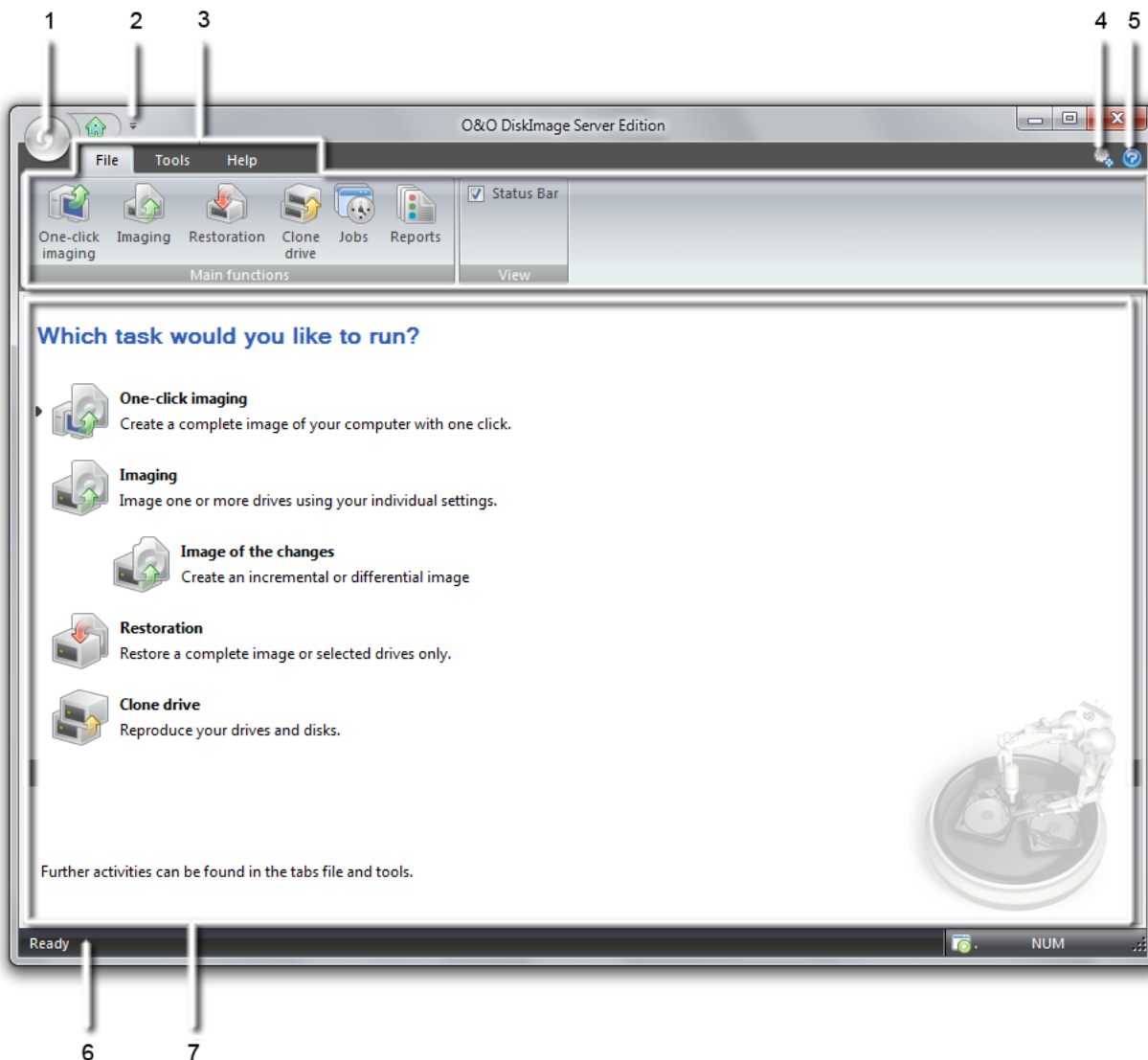
Incremental images only store the changes made since the last [base image](#). As a rule, data is compared using checksums in O&O DiskImage, so that the incremental image does not require a [complete image](#) as base image. the last incremental or differential image is sufficient for this. To restore an incremental image, you need the last complete image as well as all the following images recording any changes.

Base Image

A base image is an image that serves as a basis for any further image of the changes. Differential images require a complete image as a base image. Incremental images can usually be made using the last image of the changes as their base image. It's possible, for example, to use a differential image as a base image for an incremental image. In this way, an incremental image can also serve as base image for further incremental images. Compare to picture in chapter [Image of the changes](#).

Getting started

In this section we will explain how, after successfully installing O&O DiskImage, you can take images of drives or your entire computer and restore them back to your computer. Start O&O DiskImage either from an icon on the Desktop or under **Start/Programs/O&O Software/O&O DiskImage**. You can also have online help displayed by clicking **Help** or pushing **F1**.



Start page of O&O DiskImage

Caption:

1. Application menu
2. Quick Access Toolbar and possibilities to adapt
3. Ribbon Bar: Variable content, depending on process chosen

Getting started

4. Program settings
5. Program Help
6. Status bar
7. Activity window: Variable content, depending on action

Tip: If you have selected an activity, it will be explained on the right side of the window in the information bar, and it will guide you in the following steps.

More:

[General Terms and Definitions](#)

[Create an image of your drive](#)

[Image restoration](#)

[Only make images of the changes](#)

[Cloning a drive](#)

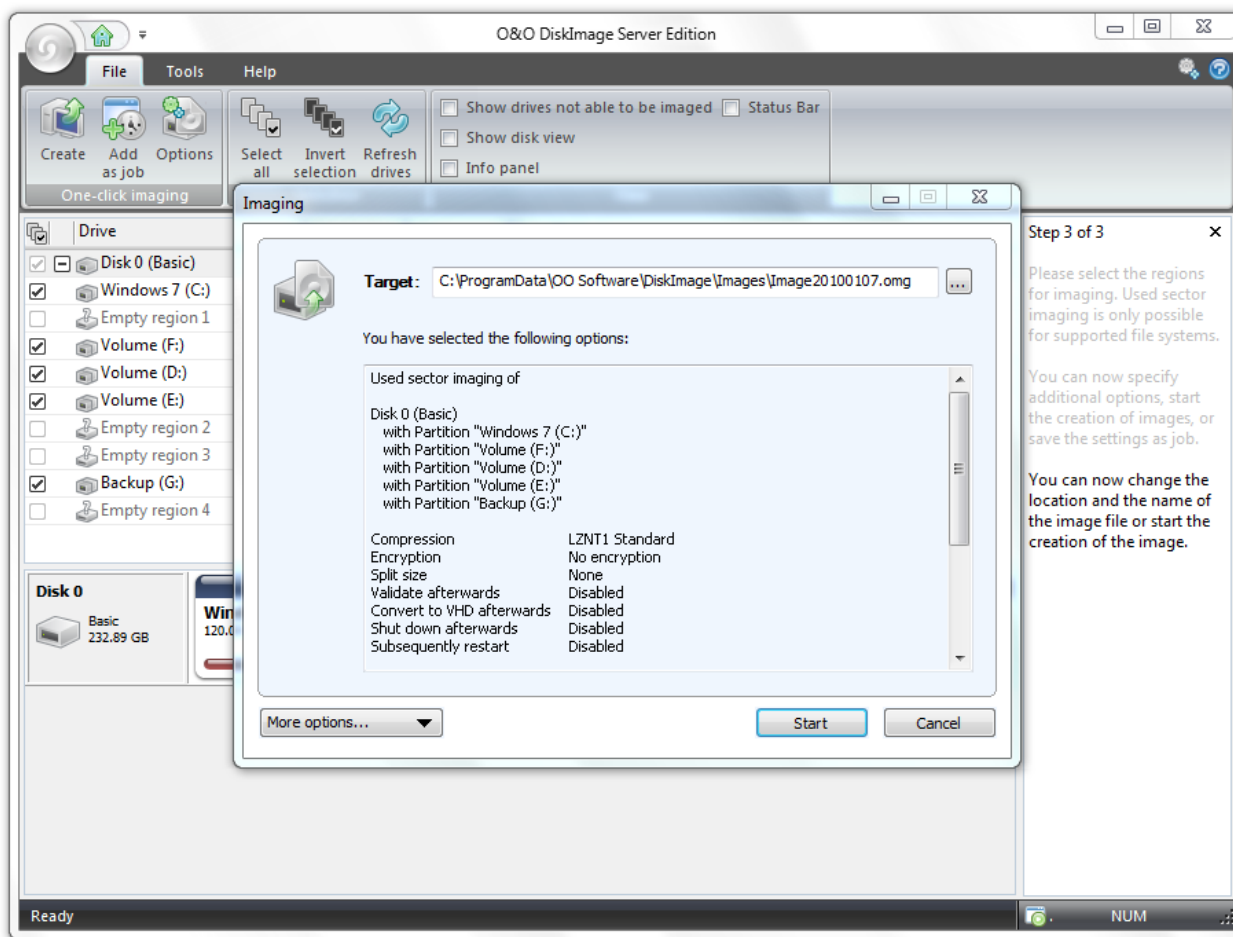
One-click imaging - Create an image of the entire computer

One-click imaging is the fastest and easiest way to create a complete image of all your data and settings. One-click imaging is especially useful if you are using O&O DiskImage for the first time or if you have not creates an image of your computer yet. Your entire computer including the system partitions are imaged with one click. The compression method (LZNT1) and the imaging method (imaging used sectors) are set as default.

Note: We recommend the use of an external storage volume, e.g. a USB hard disk or a network drive, as target for the One-click imaging.

1. Start O&O DiskImage and select **One-click imaging** on the Start page.
2. Please check, if the target path leads to your desired target location for the image.
3. Click on **Start** to initiate the imaging process. The imaging process can take up some time depending on the size of the hard disk(s).

Getting started



One-click imaging settings

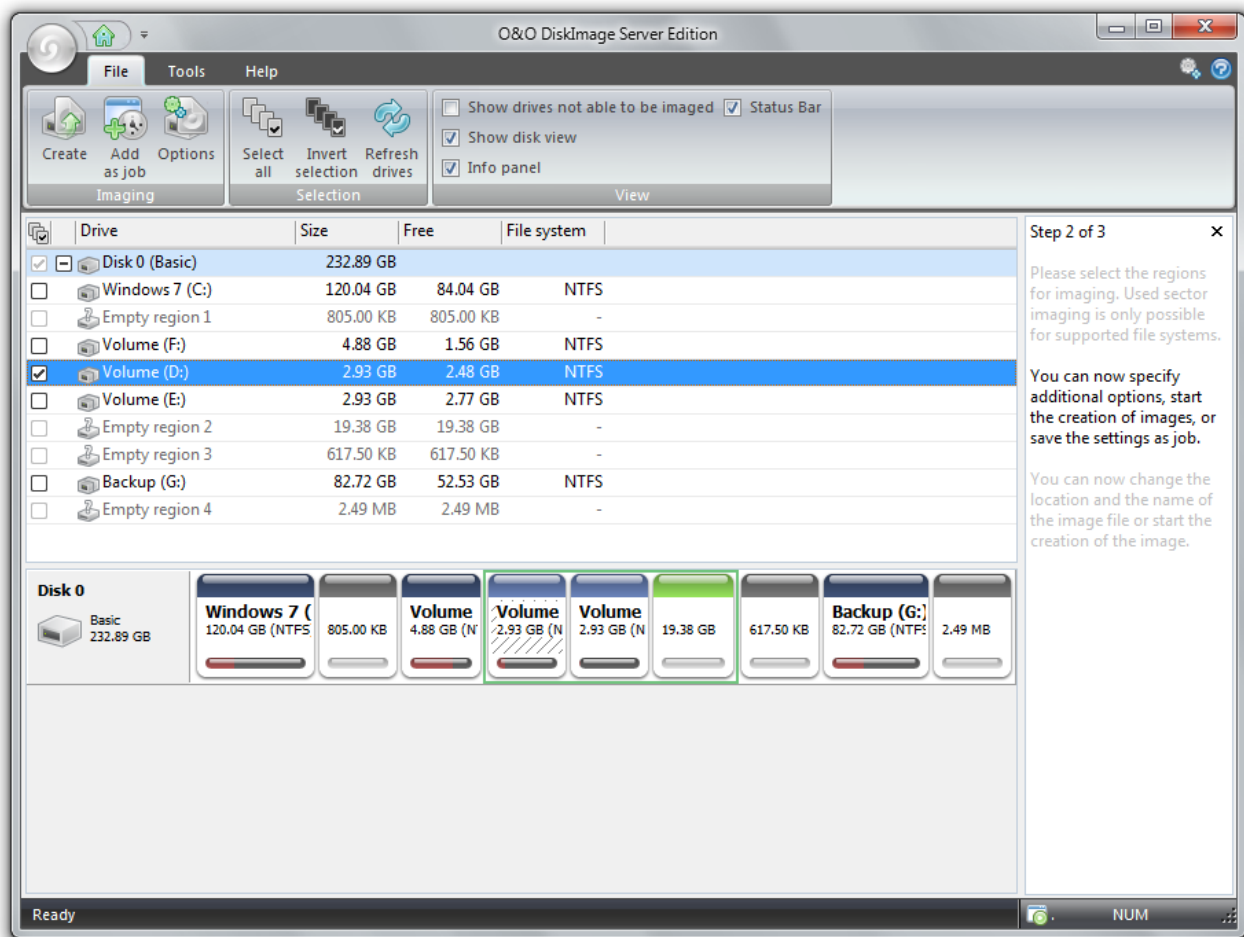
Tip: Further settings can be specified in the dialog **More options**.

Create an Image of your drive

To create an image ([complete image](#)) of one or more drives, please follow the instructions below:

- In the start screen or file menu, click on **Imaging**. Afterwards, the selection possibilities for creating images will appear in the activity window. Please take note of the instructions in the Information bar (to the right).

Getting started



Activity window for creating Images

1. Select the drive for imaging by ticking the box next to it.
2. You can set further settings under [Options](#).
3. Afterwards, click on **Create**.
4. Enter the target path of the drive on which you want to save the image. You can either accept the suggested default path or select another location. Under [Program settings](#), you can also select individual default paths.
5. The image is automatically named after the date of creation. You can, however, enter a name manually. All information from the image will be saved and can later be accessed through Image Information.
6. Select **Start**. The image file will now be created.

Note: if one storage volume is not large enough to save an entire image, you will be prompted to enter a new target path.

Note: Should not all connected drives be displayed, click on **Imaging** in the Ribbon bar and select **Refresh drives**.

More:

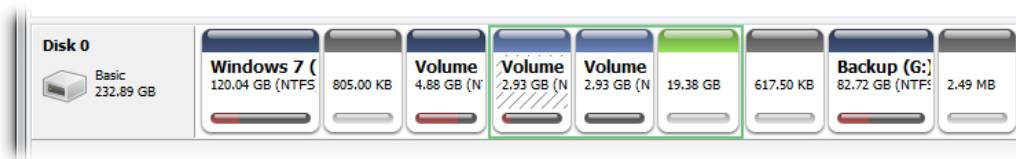
[DiskView](#)

DiskView

The interactive graphical display, which provides an overview of the entire hard disk. Free and used space, as well as the size of the partitions are displayed.

The DiskView of O&O DiskImage also shows all empty areas. These empty areas occur due to the alignment of the partitions or volumes. Applications like O&O PartitionManager or the Windows data manager do not show empty spaces, if they are smaller than the smallest partitionable area - smaller than 8 MByte.

Since O&O DiskImage creates images of hard disks, it is important to also consider these small areas, if the entire hard disk is selected as source. These areas can also be made visible indirectly with the Microsoft program "DiskPart". If the hard disks were chosen based on the command "SELECT", then it is possible to list these areas with "LIST PARTITION". Not only the size, but also the Offset, where the partition is located on the hard disk is displayed. It may be necessary to consider possible rounding differences, since the display is rounded to the thousands.



DiskView

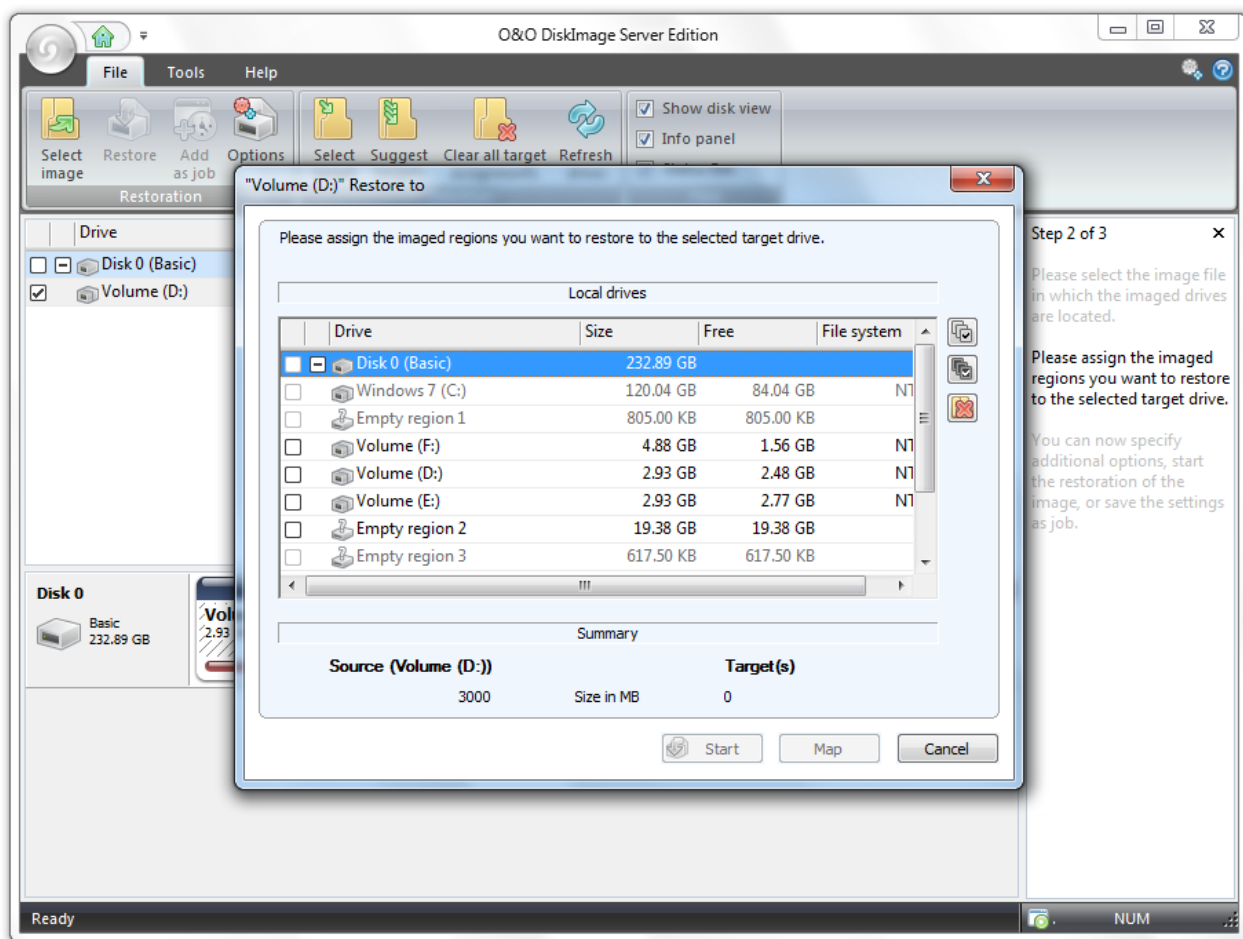
Image restoration

If you wish to restore an existing image to your computer, click **Restoration** on the Start page of O&O DiskImage or in the file menu.

You can access all information on your newly created image in **Image information** and display the related Drive Information. You can also apply further settings under **Options**.

Note: If you want to restore your entire system or a system partition, you will have to start your computer using the Start CD of O&O DiskImage and start the restoration from there. See [Start O&O DiskImage directly from CD](#).

Getting started



Activity window for the restoration of images.

To restore an image, please follow the instructions below:

1. Please make sure that the drive containing the image is connected to your computer.
2. Select **Restoration** on the Start page.
3. Click on the tab **Start** and then on **Select image**.
4. A window appears with the drive and image file (*.omg) or (*.vhd) Should the image file presented not match the one required, browse through your drives and enter the path to the image file.
5. Select **Open**.
6. Set the check in the box of the drive you want to restore, and select a target drive for the image in the following dialog. You can either replace an existing drive or create a new drive, for example, in an empty sector.
7. Click on **Map**, if you want to continue setting links or directly on **Start**, if you want to begin directly with the restoration.

Important: During restoration, the image overwrites your selected drive with the data of the drive contained within the image. All data on the target drive is thereby lost and replaced by that of the image.

Note: If you are not restoring the image onto the original hard disk, the memory of the hard disk you're using must have at least as much storage capacity as the original one. This is extremely important, e.g. when imaging an entire hard disk.

Note: If you split your image onto various storage volumes, all such storage volumes will be required for a restoration. If you have created incremental images, then all images made since the first complete image will be needed.

Note: The Start CD, designed for running O&O DiskImage without an operating system and for restoring a system partition, is not included in the Special Edition.

Create image of the changes

With **Image of the changes**, an image will be created that contains only those changes that have occurred since the last [base image](#) was made. As a rule, an image of the changes requires less disk space than a [complete image](#).

To execute an image of the changes, you must have at least one complete image of the respective drive available. A base image can be either a "complete" image (created using the "Used Sector", "Forensic" or "Direct forensic" imaging methods), or an already existing [incremental /differential image](#).

Follow the instructions below:

1. Make sure that the drive containing the base image is connected to your computer.
2. On the Start page of O&O DiskImage, click **Image of the changes**.
3. Select your base image in the browser window.
4. Check details of the image under **Image information** and the corresponding **Drive information**.
5. Then click **Create**.
6. You will now be able to select either the default drive for saving the image of the changes, or manually enter another target path. For greater clarity, it's advisable to store the base image and its respective incremental/differential image file on the same drive. You may, however, use any drive you wish.
7. The image is automatically named after the creation date but you can enter another name manually.
8. Now click **Open** and then **Start**. An incremental/differential image will be created from the base image. The imaging method of the original "complete" image, e.g. Used Sector, remains the same and cannot be changed.

Note: The option **Use checksums to manage unchanged data** is set as default. For creating incremental images, the last incremental image created is enough to use as a base image. If **Use Checksums to manage unchanged data** is not set, you will need the last base image and all existing incremental images because all of these will have to be accessed during the imaging process.

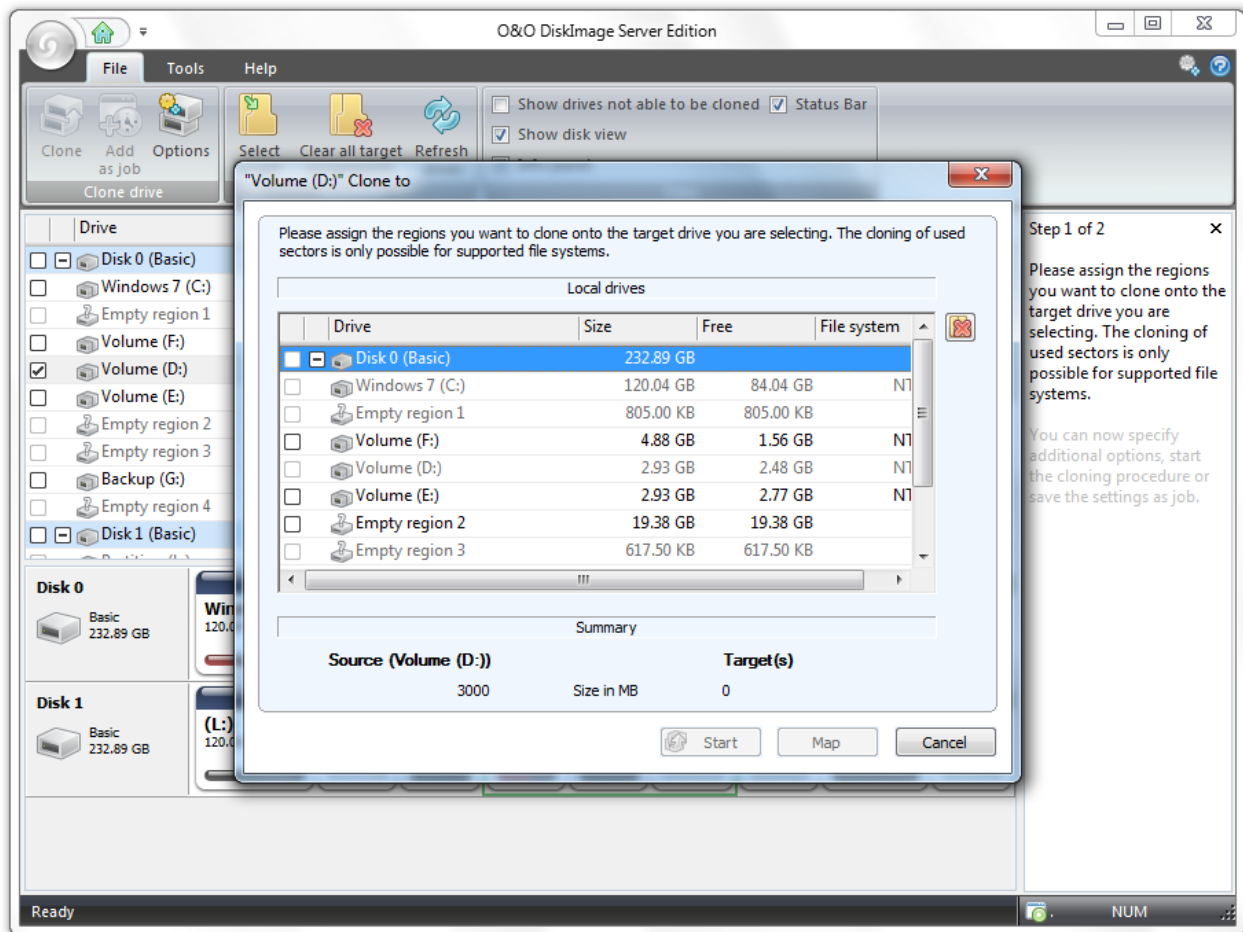
Cloning a drive

Entire storage volumes or individual drives can be cloned, which in turn can be used instead of the originals. With this function you can clone a drive with all its saved data without creating image files. No changes will be made to the source storage volumes / source drives so that they will remain unchanged.

Please bear in mind, that you will need much more space when cloning your drive as for an image.

Getting started

No incremental or differential follow up image can be done with a clone, which would lessen the data volume. Also, copy **cannot** be compressed and/or encrypted, which would render the data useless for third persons or other unauthorized access.



Activity window for cloning drives.

1. Select **Clone drive** in the Start page or the Application menu.
2. Select the drive for imaging by ticking the box next to it.
3. Afterwards a dialog will appear, where you must select a target drive.
4. Click on **Map**, if you want to set further drives or directly **Start**, if you want to begin the cloning immediately.
5. You can also "reverse" your clone in exactly the same fashion.

Important! When cloning your Drive (Source Drive), the selected target drive, i.e. the place chosen for the clone to be stored, will be overwritten. All data stored on it will be deleted and replaced by the clone! You should therefore save the cloned image on, for example, an external hard disk chosen for this purpose.

Note: When making a cloned image of the drive, you should adjust the features of the target drive for future application. Make sure, for example, that the system partitions of the cloned image will be able to boot.

Note: Under **Options** you can specify more settings for cloning, See chapter [Settings for cloning drives](#).

Start O&O DiskImage directly from CD

If you run O&O DiskImage directly from CD, you will have all functions at your disposal. The Windows PE based Start CD is especially suitable, for example, if you restore your entire computer or the system partition, but only if you have created a corresponding image before. You can use the CD even if your Windows doesn't start up anymore due to a software failure. The CD holds various other system rescue tools besides O&O DiskImage. These tools will try to start Windows successfully without having to restore from an image. More information is available in the program help of each integrated tool.

To run O&O DiskImage directly from CD (Windows PE Version) it is not necessary to previously install it. For starting from the CD, proceed as follows:

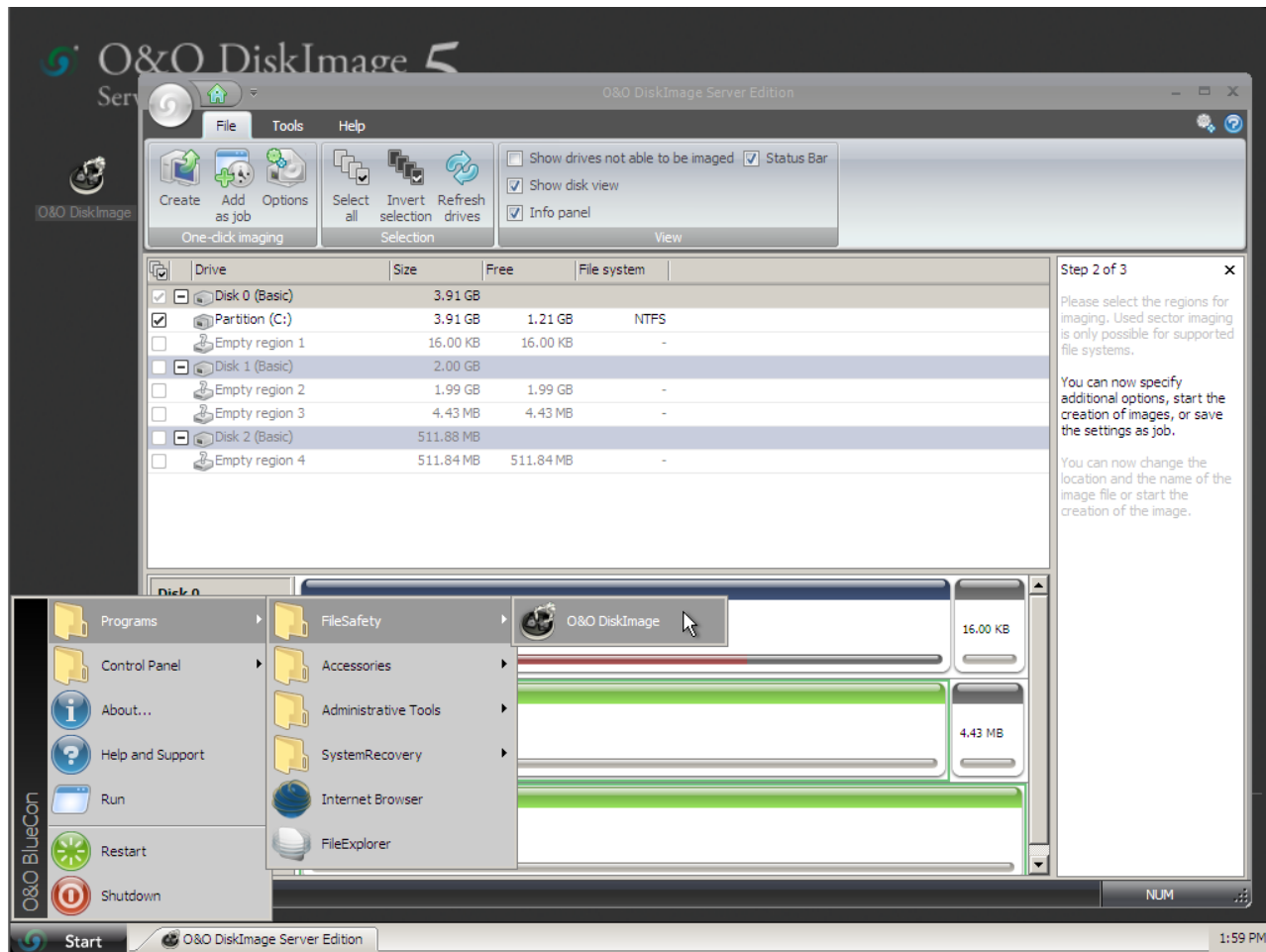
1. Make sure that your system is able to be started from a CD. You can place the appropriate settings in BIOS. Further information can be obtained from your motherboard manufacturer.
2. Put the O&O DiskImage Start CD in your computer's CD/DVD drive.
3. Restart the computer. Follow the instructions at the start of the CD.

A screenshot of a boot screen with a black background and white text. The text reads "Press any key to boot from CD or DVD..._" with a cursor at the end of the line.

4. The system settings will subsequently appear in the window. Select a language and region.
5. At the next stage you can load drivers for those devices where no drivers under Windows PE were initially found, see also chapter [Load Drivers](#).
6. O&O DiskImage will start after confirmation of the license regulation.

Tip: To restore your entire computer or your system partition, go to chapter [Image restoration](#) and follow the instructions given. Please note the instructions in the dialogs regarding the restoration of a system partition.

Start O&O DiskImage directly from CD



Start O&O DiskImage under Windows PE

Note: The Start CD, designed for running O&O DiskImage without an operating system and for restoring a system partition, is not included in the Special Edition.

Note: If you want to run the restoration on a computer with differing hardware, then please read more on the separate PDF document "Restoration on differing Hardware" (Machine independent restoration).

More:

[Load drivers](#)

Loading drivers

Whenever a device, e.g., hard disk or network card, isn't automatically recognized by O&O DiskImage (Windows PE version), it may be the necessary controller driver (e.g., for RAID controllers) is missing. In such cases, it's now possible to manually load the drivers from disks, CDs, DVDs, or USB sticks even before the program starts.

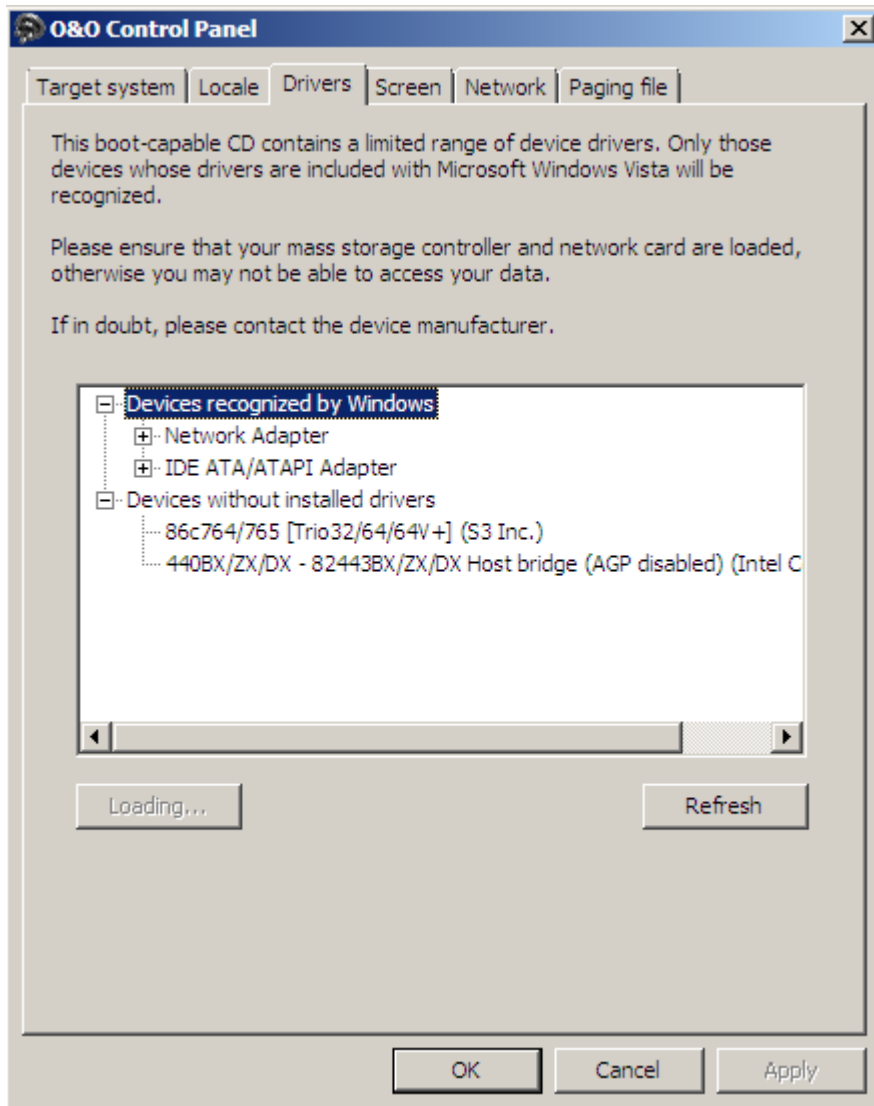
- Under **Drivers** in the system settings, you can load drivers for those devices still unable to be found under PE.

Start O&O DiskImage directly from CD

Note: Please keep in mind when doing so that you will need the driver for Windows Server 2008 32 Bit. The driver for Windows Vista 32 Bit might work as well.

Note: Under certain circumstances, you may receive a notice requiring you to restart if you have loaded an additional driver under Windows PE. This message is automatically generated by Windows PE but is irrelevant when starting from a CD. Simply reject the request and follow the further instructions in the pop-up window.

Note: Encrypted drives are not supported by O&O DiskImage under Windows PE!

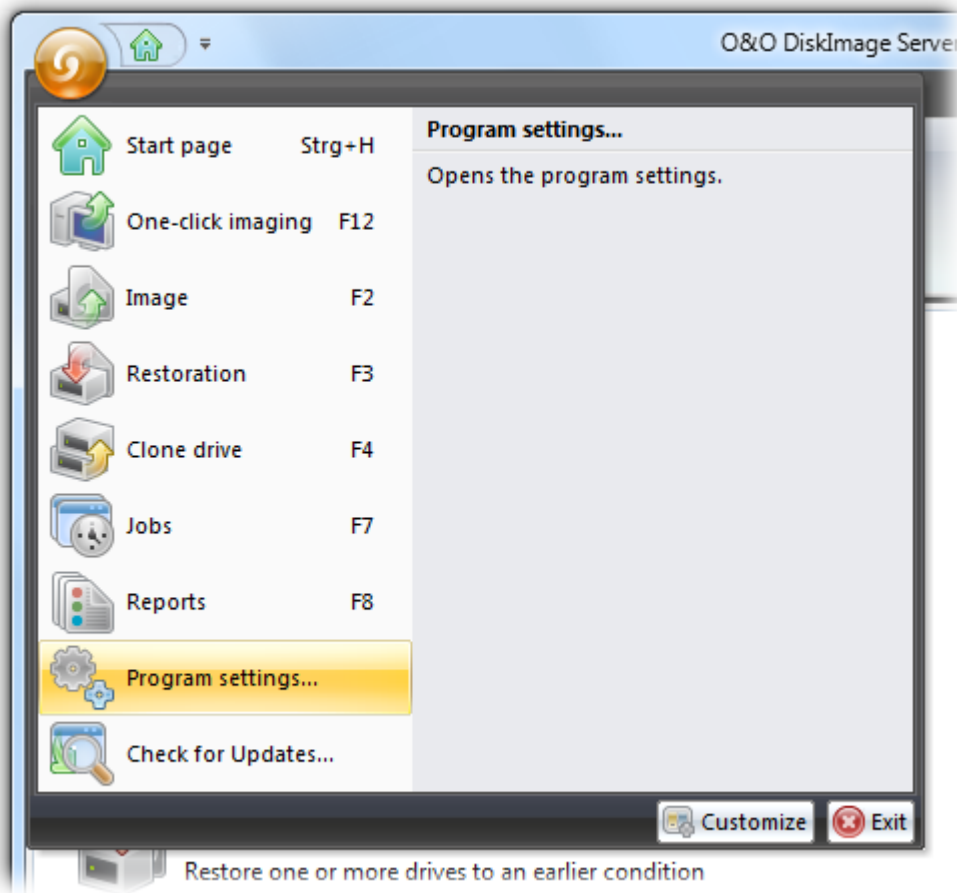


Loading drivers

Program settings

Under **Program settings** in the top right of the ribbon bar, you can customize O&O DiskImage to suit your own requirements. Here it's possible to specify, for example, whether created settings should be saved and applied as preferred settings when you start the program the next time.

Note: If you're starting O&O DiskImage directly from CD, the tabs for General, Security, and Email notification are not available.



Button for program settings in the application menu

More:

[General - change default settings](#)

[Security - Network authentication](#)

[Imaging - Change Default settings and Behavior](#)

[Change behavior for restoration](#)

[Change behavior for cloning](#)

[Change behavior for jobs](#)

[Settings for reports](#)

General - Change default settings

The options for selecting the program page displayed at the start of O&O DiskImage can be found under **General** in the **Program settings**. You can, for example, specify that the "Imaging" page appears whenever you start the program.

Customize user interface

Under **Appearance and behavior** you can adjust the display of the user interface. There is a choice between "Modern" (default) or "Classic".

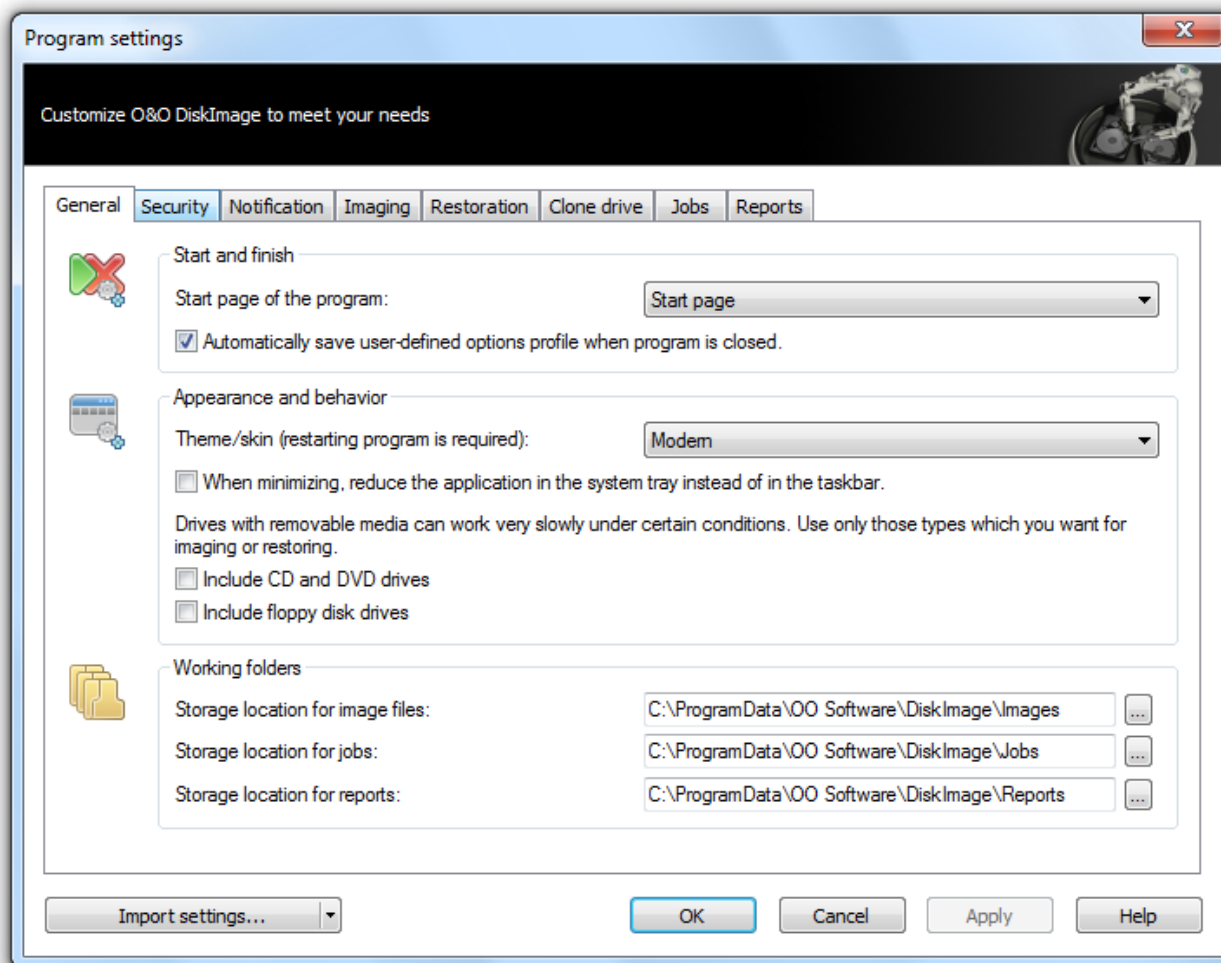
Accessing removable drives

Under **Appearance and behavior** you can decide whether removable drives should be accessed when creating images or during restoration. As these removable drives tend to work very slowly under certain conditions, it is advisable to use only those types which you would want for imaging or restoring.

Default settings for storage locations

Under **Working folders** you can specify and change the folder where images are being saved by default. The path entered (target path) will be saved and applied to every data imaging by default.

The storage location for jobs and reports can be similarly specified.



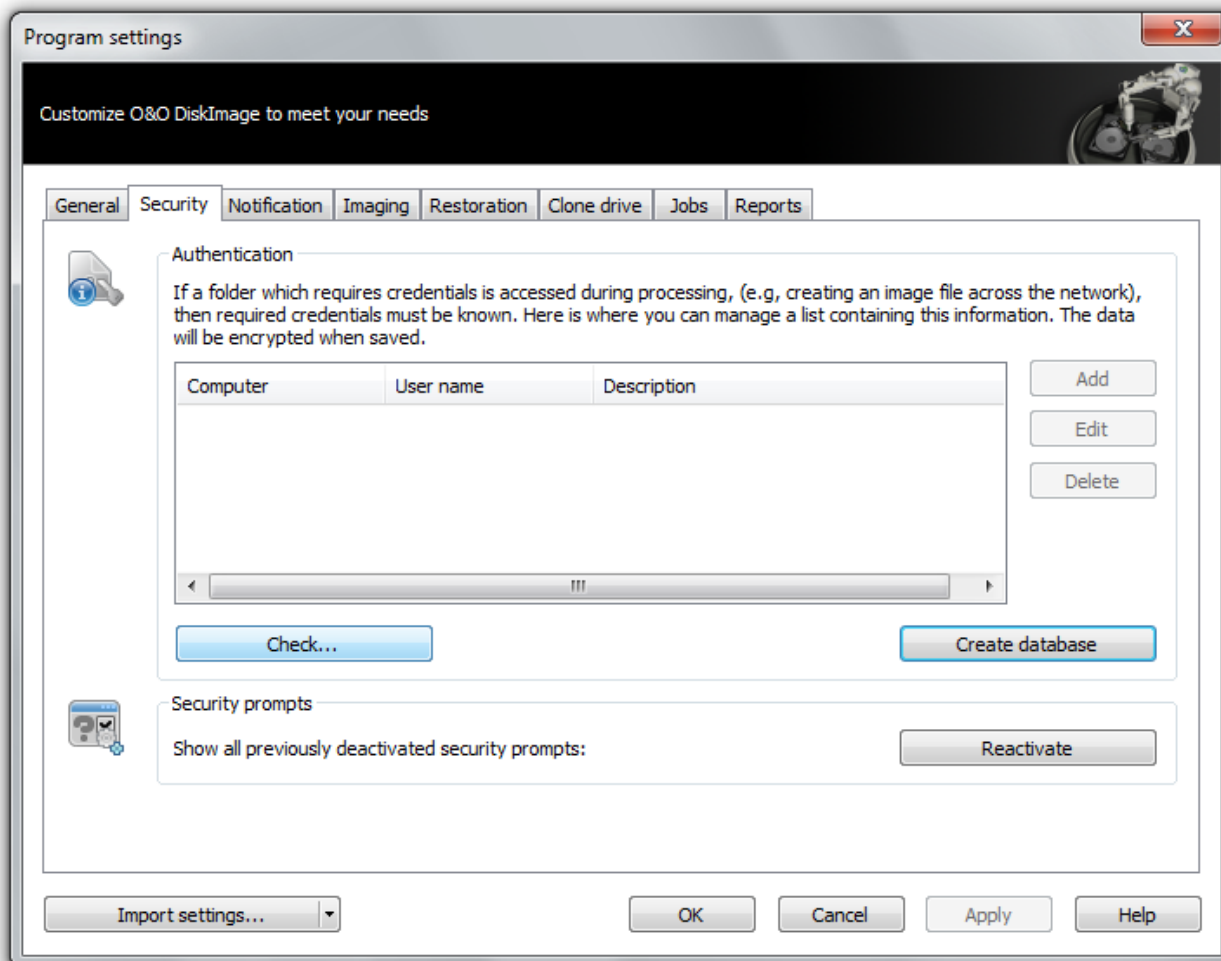
General program settings

Security - Network authentication

To login locally or to a network, e.g., for accessing protected folders, you will need to authenticate. Authentication is made through your user account. The user account is composed primarily of the user name and corresponding password, and can be coupled with additional permissions and sharing rights. When working with O&O DiskImage, for example, it's possible to store images on network drives and access them whenever needed.

Please use the password manager of O&O DiskImage for automatic authentication.

Program settings



Authentication in a network

More:

[Explanation: Password Manager](#)

[Network authentication](#)

Reset security confirmations

Most of the security confirmations of O&O DiskImage can be deselected. Once deactivated, they will be suppressed and not be displayed anymore. If you want all the security confirmations to be displayed just like when the program first started, click under **Program settings/Security** on **Reactivate**.

Explanation: Password management

Managing the password is a program function, which allows you to store authentication data encrypted and to manage it. These data is compresses in the password file, using the Advanced Encryption Standard-Algorithm and then

Program settings

stored. In addition, the order of the data sets is chosen at random.

A public and a private key are used to encrypt the password. The public key is preset and can be changed in the Registry under „O&O DiskImage\Edition“. Please bear in mind that the key has to hold a value. An empty key will not be accepted. The private key is preset to a size of 64 Byte.

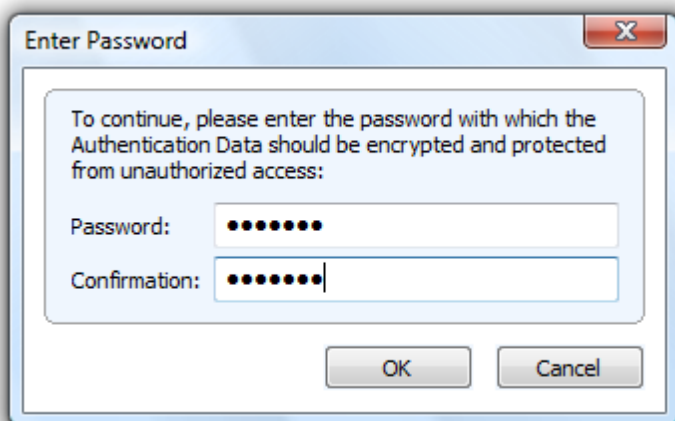
Important! Changes in the Registry may cause severe problems affecting the entire system and may cause the need to reinstall the complete operating system. Before making changes in the Windows Registry database, you should create an image of all the important data on your computer using O&O DiskImage.

Note: If you make changes in the Registry, it will require loading the database again.

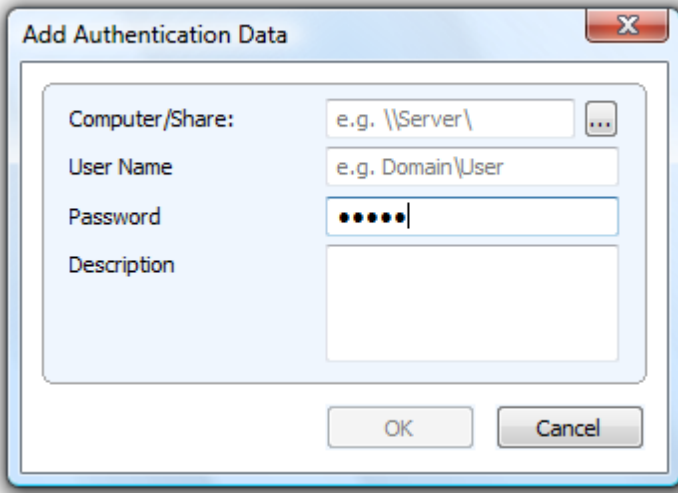
Network authentication

Enter the following settings under **Program settings/Security**:

1. If you have not yet created a database, click on **Create database**.
2. Enter a password of your choice and confirm your entry. This password will be encrypted. The key for this password is composed of a public key and a private key, so that the password file will only be opened and read by you or O&O DiskImage.



3. Afterwards, click on **Add** in the security dialog in the program settings.
4. Under **Computer/Folder** enter the path under which the image is to be saved, or from where it is supposed to be loaded from: \\Computer name\Folder name or Domain name\Folder name\User name. Alternatively, you can also enter the computer name only, if all the sharing options can be opened by the selected user.
5. You have to enter a qualified name of a user account while entering the user name. For example, the corresponding domain for the specific domain account has to be entered and covered, e.g. domain\user1 or User1@domain
6. Enter the network password of the user, or of his user account. Please keep in mind that the user under which you login has to hold access rights for the target or original folder. You can check for them under Properties in the corresponding target directory under Security.



7. Optionally, you can also add descriptions to the credentials.
8. After the authentication, you can, for instance, enter a new "network path" as saving location and also restore an image from there.

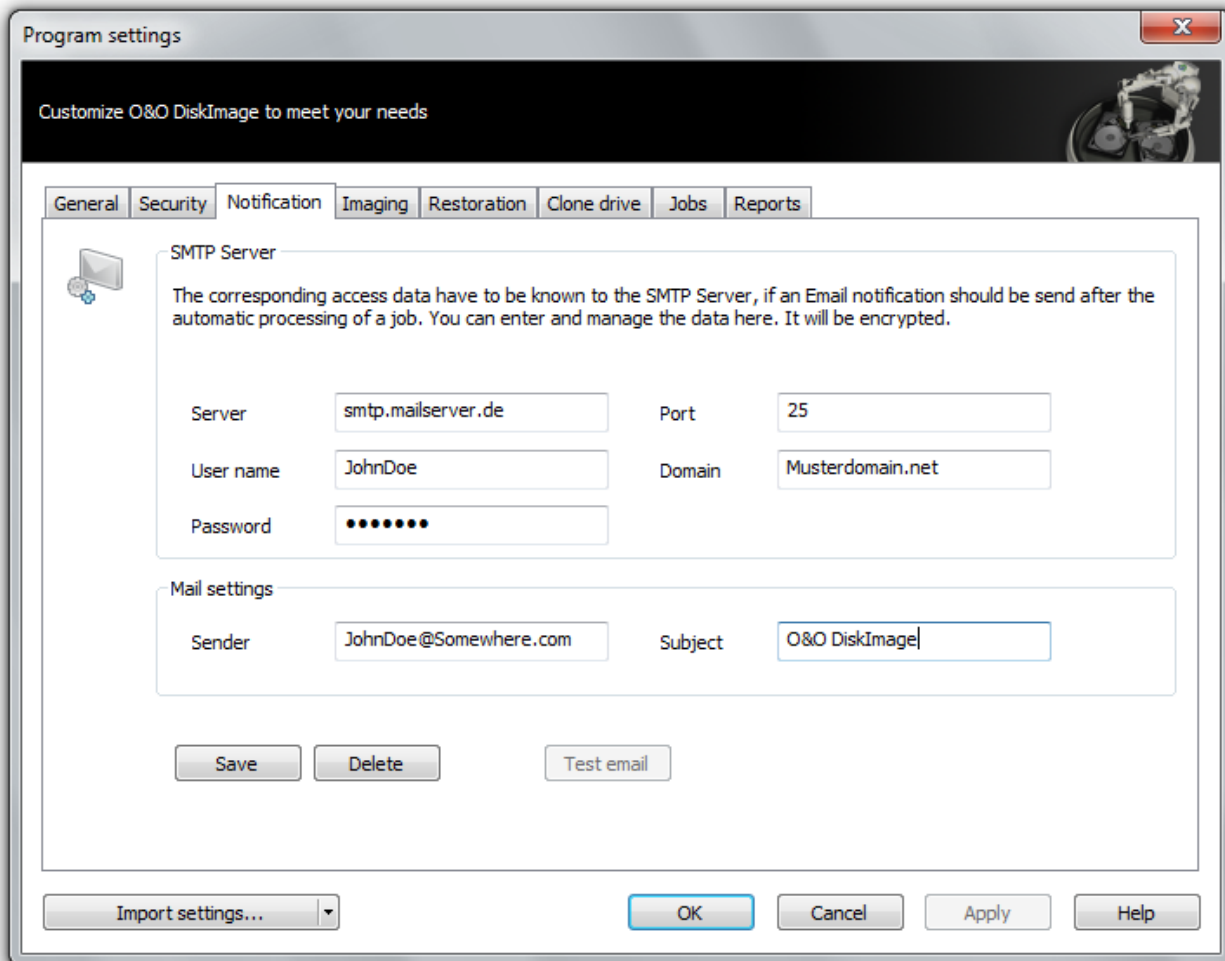
Additional information is available in chapter [Frequent questions on authentication](#).

Settings for notification

To receive email notification about the running of a job, you'll have to enter the corresponding login data in the SMTP server. You will also need to enter the sender data.

- Execute the relevant actions in **Program settings** under **Notification**.

Only after completing these actions will you be able to successfully enter your email address in the Job assistant as a recipient for [Notification](#).



SMTP settings for notification

Suggestion: Try sending yourself a test email to make sure your entries are correct.

Security - Change default settings and behavior

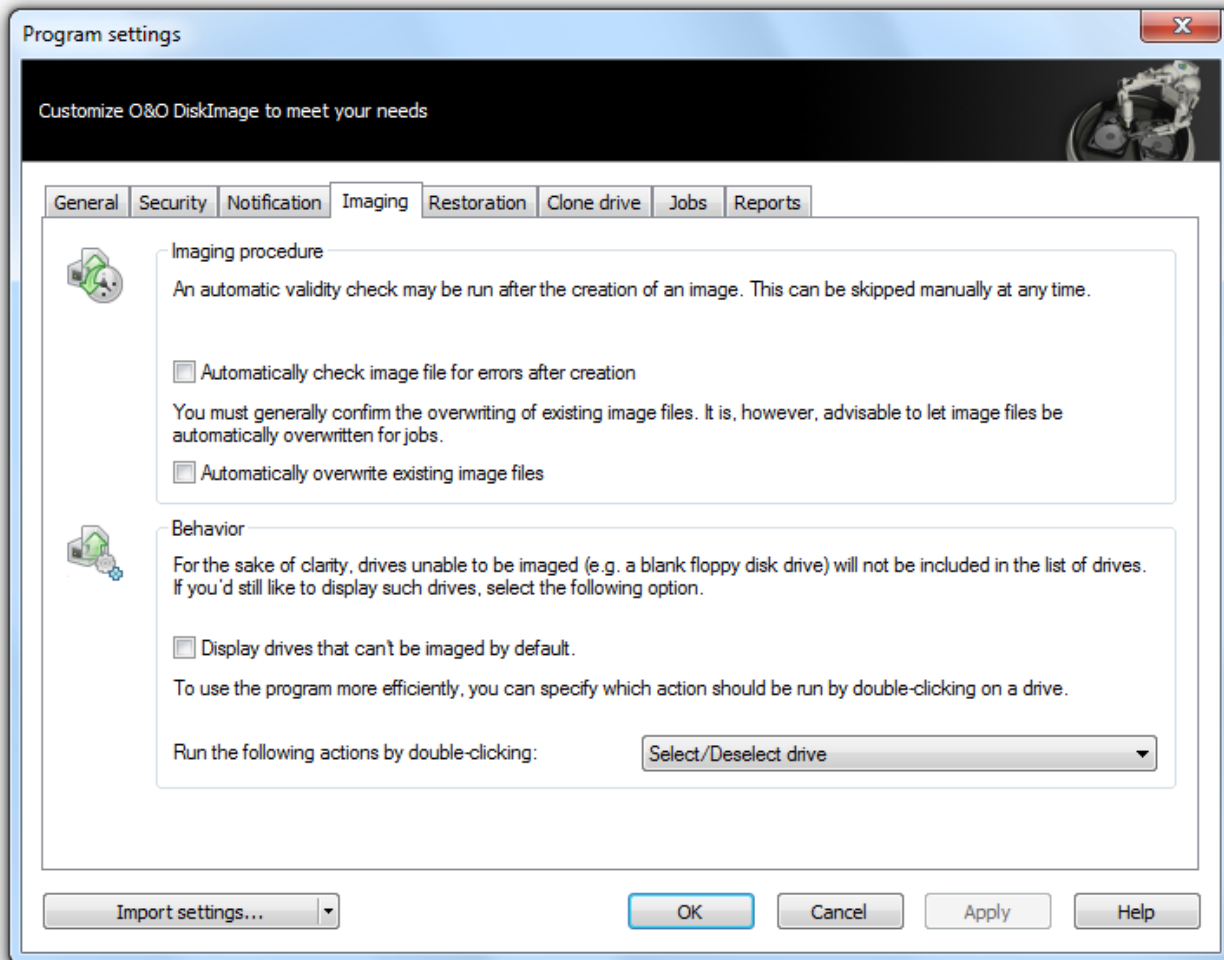
Under **Imaging** in the **Program settings** you can set specific settings for imaging.

Under the option **Automatically check image file for errors after creation** you can specify whether image files should be checked for errors immediately after they are created.

Program settings

When you enable **Overwrite existing image files**, the prompting for overwriting image files with the same name will be suppressed during the creation of new images. This function is very useful when, for example, you're imaging data a number of times daily, and the image is automatically being named after the Day/Month/Year.

Under **Behavior** there is the option of having the program window also display invisible drives such as empty card readers or disk drives, the "Microsoft reserved partition" on GPT drives, OEM BIOS partitions on DELL and IBM, or the system sectors on base disks.



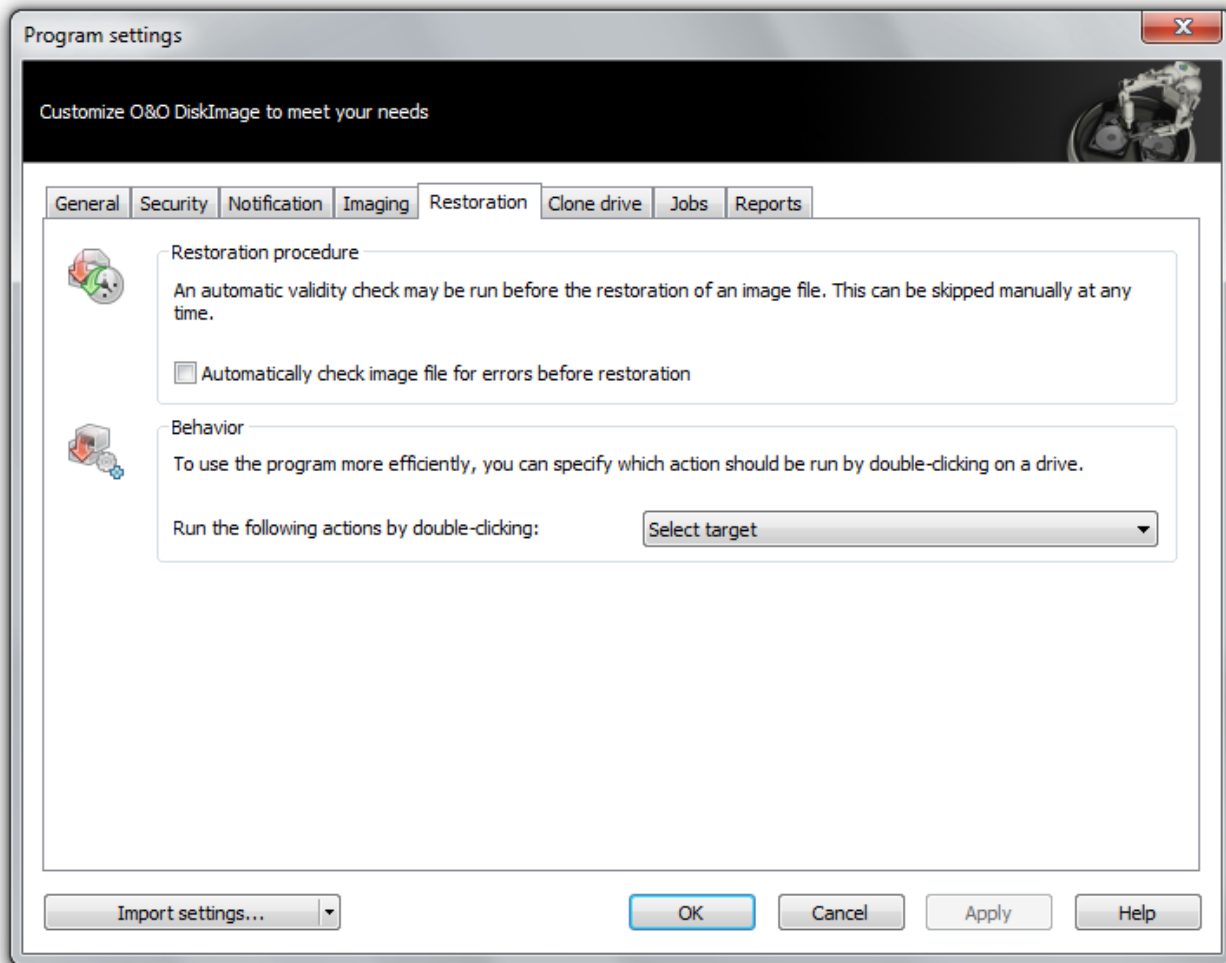
Program settings: Imaging

Changing behavior for Restoration

You can establish the default settings for behavior during restoration under **Restoration** in the **Program settings**.

You have the option of deciding whether a validity check of the image should be conducted by default prior to restoration.

You can also control a drive's **Behavior** by double-clicking it in the "Restoration" activity window.



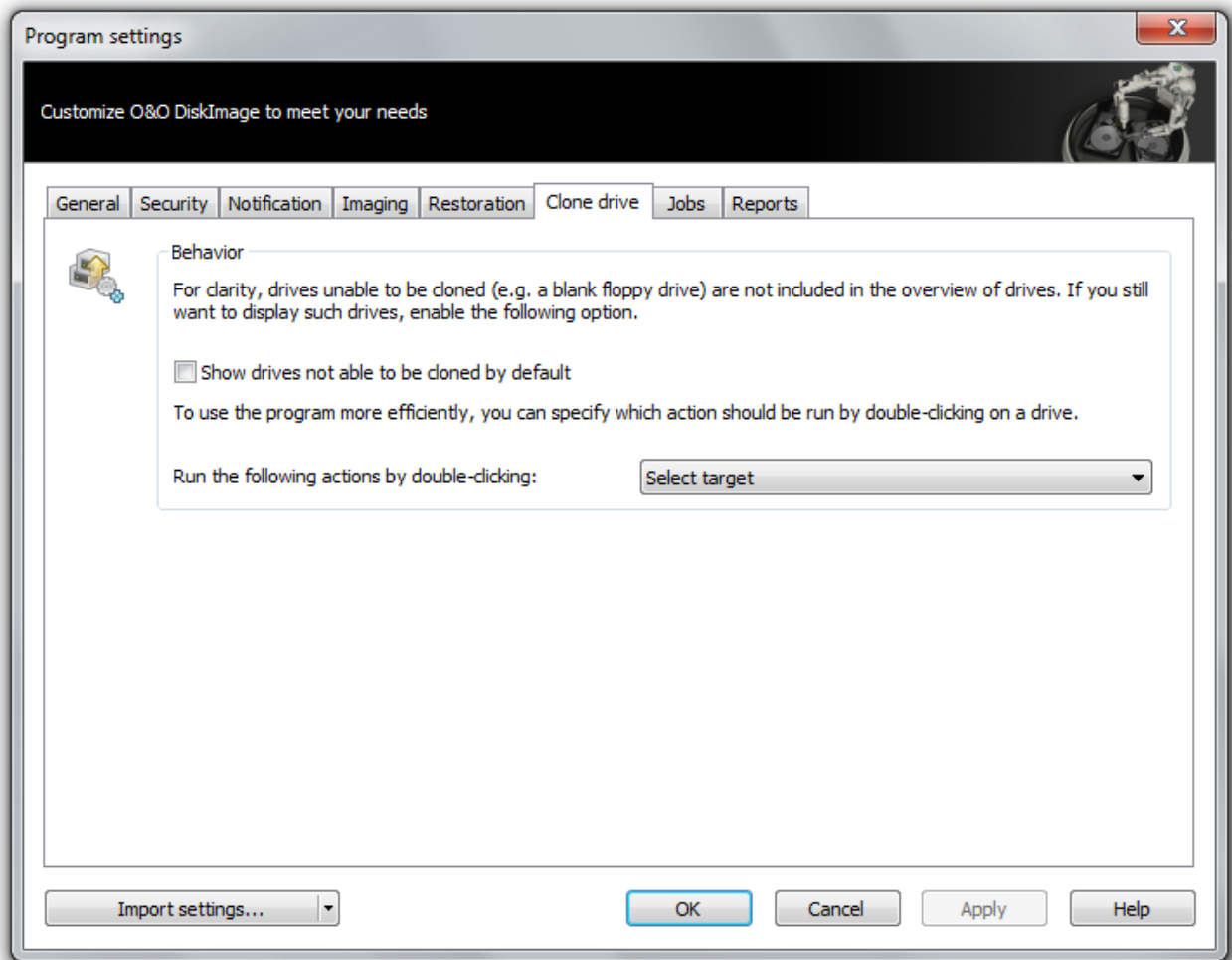
Program settings: Security

Changing behavior for Cloning

If you're looking to change or enable the default settings for cloning, click **Clone drive** in **Program settings**

You can also decide whether drives unable to be cloned (e.g., a CD/DVD drive or empty disk drive) should be displayed by default in the "Clone drive" activity window.

In addition, you can control a drive's behavior by double-clicking it in the "Clone drive" activity window.



Program settings: Clone drive

Change behavior for jobs

If you want to specify or change the default settings for the jobs, click **Program settings** and then **Jobs**.

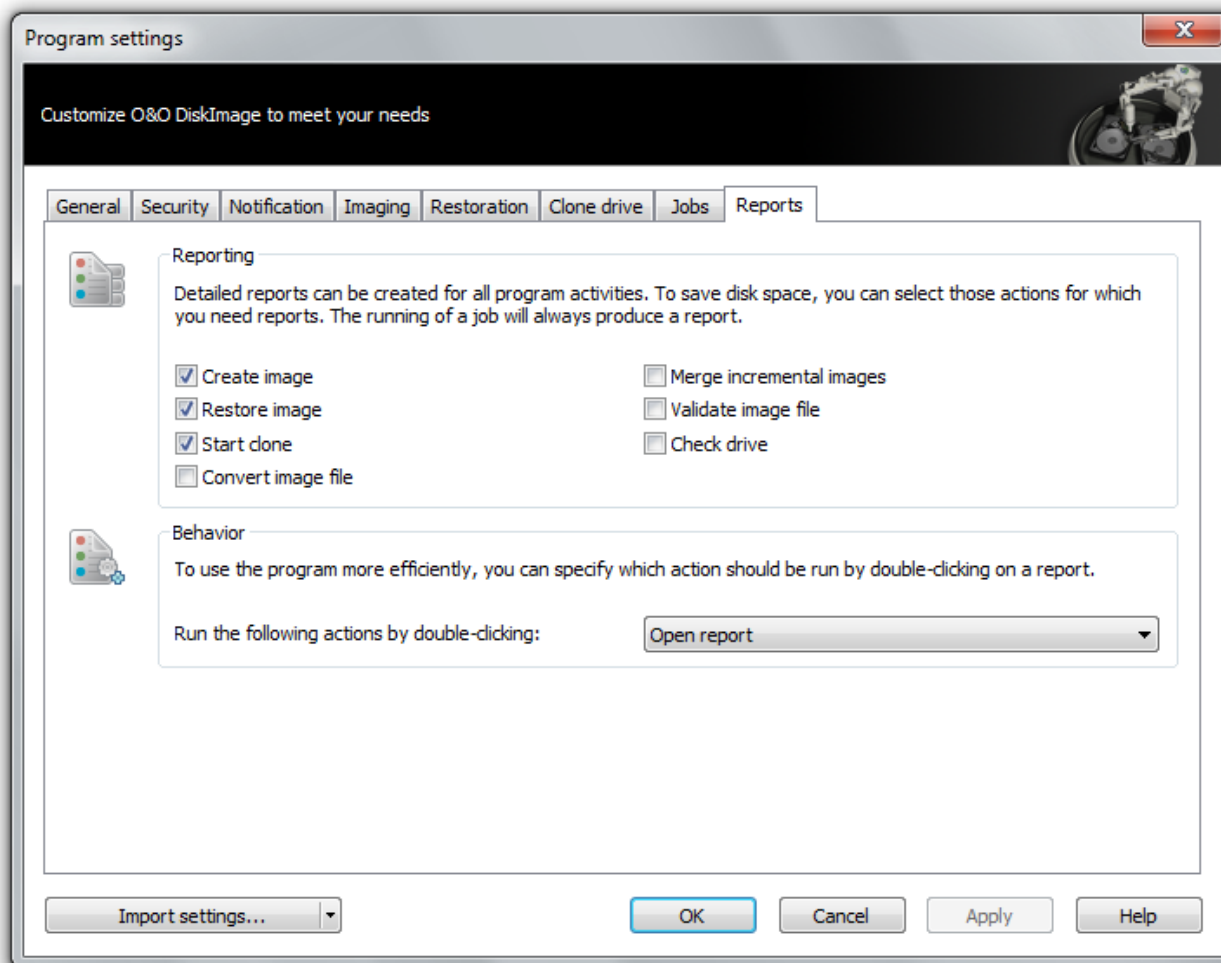
Under **Behavior** you can specify which activities to run, if you double-click on a job in the job list.

- To change the settings, click on **Program settings** on **Jobs** and decide on an activity from the list.

Settings for reports

Detailed reports can be created for all the program activities. To save space, you can select the activities, which are necessary for the reports. Running a job always creates a report.

In addition, you can set the behavior with a double-click in a report in the report list.



Change settings for reports

TrayIcon

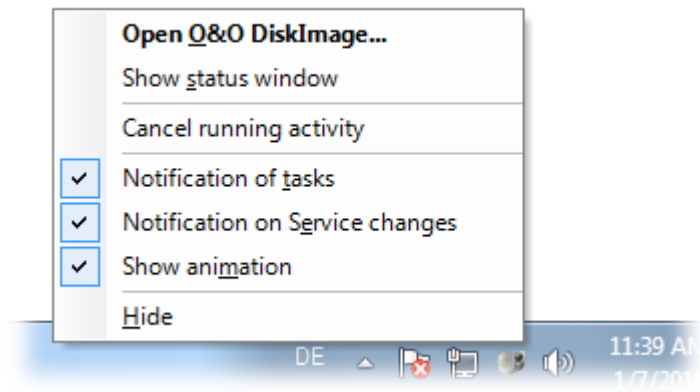
After a successful installation, the O&O DiskImage icon will be displayed in the notification area of the task tray by default. The tray icon will indicate whether O&O DiskImage is currently enabled. The icon will be animated while an action is being processed, otherwise, the tray icon will remain still.

Right-clicking the tray icon will show you various control options for O&O DiskImage. You'll be able to open the O&O DiskImage program interface, cancel a running action, hide the tray icon, or suspend the animation.

You'll also be able to switch email notification about the running of a job or a service alteration on and off.

Our suggestion: If you'd like to have the tray icon permanently disabled (hidden), do so using the menu **Start/All programs/O&O Software/O&O DiskImage/O&O DiskImage Tray**. The same path can be used for reversing the process whenever you want the icon to be shown.

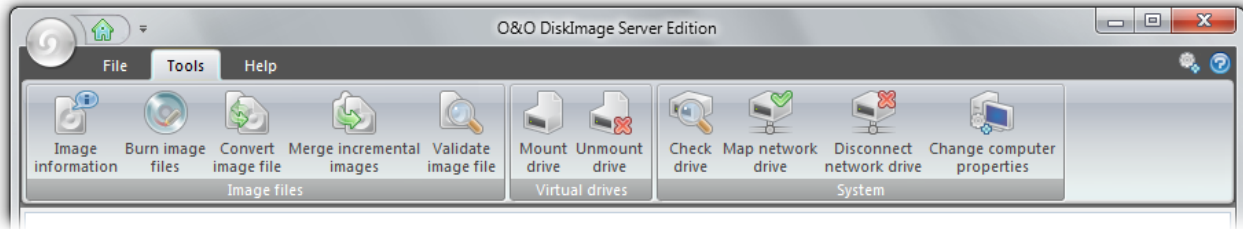
Program settings



O&O DiskImage's right click menu during an action

Tools

This chapter will show you the tasks you can run on a created image. The various imaging tasks can be found under **Tools** in the ribbon bar.



Selection of tools for a task

More:

[Mount image as a drive](#)

[Unmount drive](#)

[Convert image file](#)

[Merge incremental images](#)

[Validate image file](#)

[Check for drive errors](#)

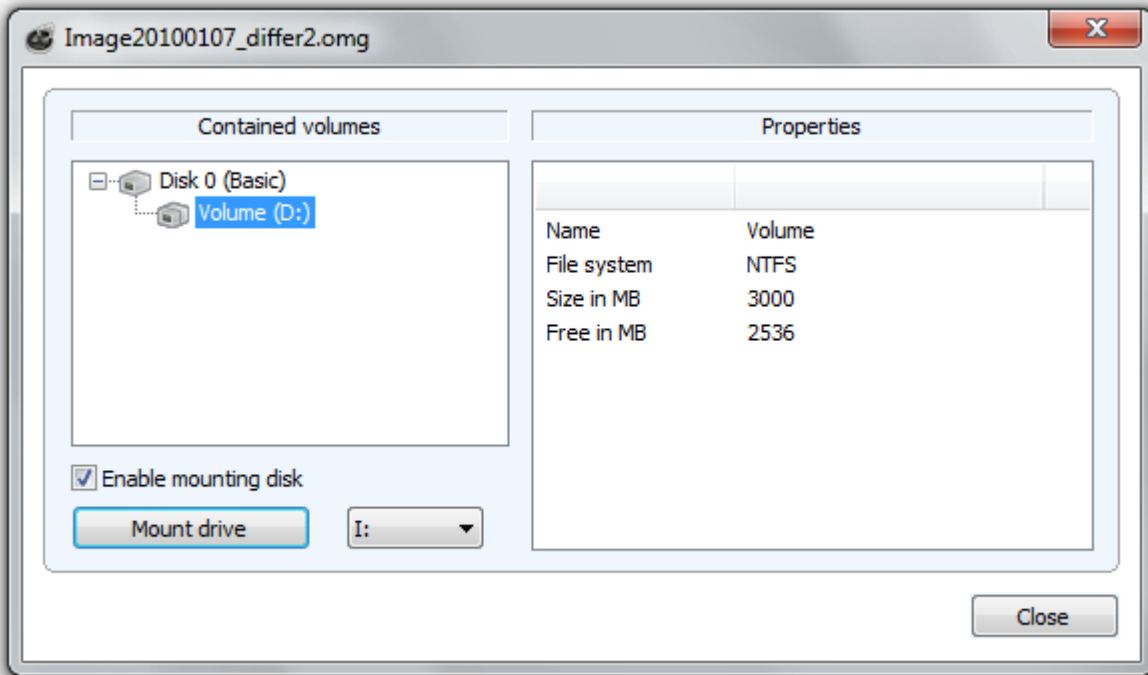
[Burn image on CD/DVD](#)

[Map/Disconnect network drive](#)

[Change computer properties](#)

Mount virtual drive

You can have your created image file displayed in Windows Explorer as a virtual drive. This allows you to copy files or directories from the image file onto existing hard disks. Making changes to the mounted virtual hard disk of the image file, such as deleting or adding files, however, is not possible.



Mount Image File as a Drive

1. Open **Tools** and select the option **Mount drive**.
2. Select the image file (*.omg) from the dialog window, from which you want to mount the drive. If you are not sure, you can look up the details of the image under **Image information**.
3. After selecting the image file, all drives included in the image will be listed in the program window.
4. Select the displayed drive as image. Here in the example "Volume (E:)" .
5. Afterwards, you can select any name from the drive list (e.g. G:) for the drive from the image.
6. Then click on **Mount drive**. If the mounting process was successful, you will see the virtual drive from the image displayed as drive (G:) in Windows Explorer.

Please note that you may only access sectors which contain image files. Refreshing can take a few moments.

Note: A notification to restart your computer may appear by the initial mounting of an image file under Windows 2000. Cancel this in order to mount the image as a drive.

Technical limitations

Refreshing under Windows: If you are working over a remote desktop connection, you must restart your computer to display the newly created drive.

Loading images, which are larger than 2TB, are not supported by Windows 2000 and Windows XP (32-Bit).

For forensic purposes only:

Initialising an entire hard disk as a virtual drive can lead to problems of recognition for the virtual storage volume, if the imaged hard disk contains one of the following:

- a damaged partition table

- partitioning process not supported by your operating system (e.g. GPT)
- a RAID System component, where only one physical hard disk was imaged
- a dynamic drive
- encrypted hard disk

Unmount drive

If you no longer want to display a virtual drive you've mounted from an image file, click under **Tools** on **Unmount drive** and remove the drive in the program window

Convert image file

The tool **Convert image file** allows you to change the properties and content of existing images (OMG) or a virtual hard disk (VHD). It creates a copy of the image file (OMG) or virtual hard disk (VHD), so that the original image remains intact.

Further settings like compression, encryption, or splitting images into several image files with a certain size are also possible. Please note the limitations for [Handling virtual hard disks\(VHD\)](#).

More:

[Handling virtual hard disks](#)

[Specify the size of an image file](#)

[Encrypting an image](#)

[Compress an image](#)

Merging images (OMG)

In Tools under **Convert image file/Add** you can select the drives for merging.

This enables separate image files to be merged. Only image files of similar types can be merged: that means only forensic, direct forensic or used sector images can be combined.

- Simply add the drive from the list.

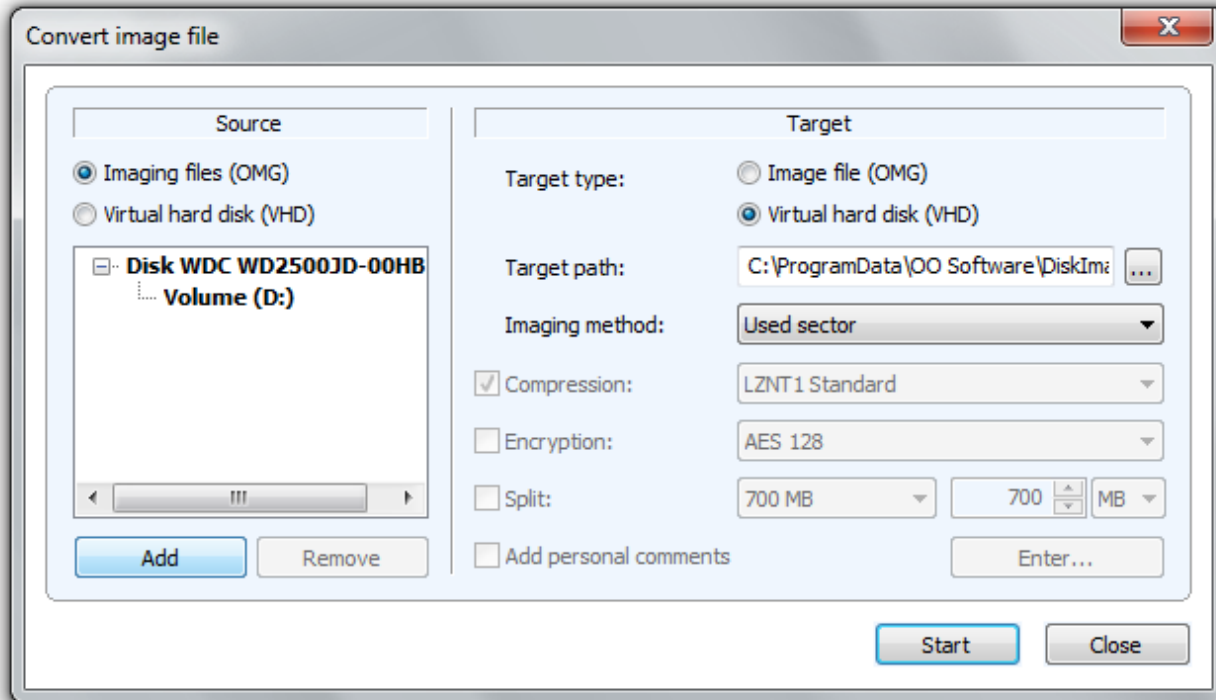
Handling virtual hard disks(VHD)

To simplify working with Microsoft Virtual PCs (VPC), you can now convert image files into virtual drives (VHD). The converted image can be integrated as a virtual drive in the VPC, without having to install O&O DiskImage there. In a similar way, images (OMG) can be created of virtual hard disks (VHD).

1. To convert an image to a virtual drive file (VHD), click **Convert image file** in the Tools menu.
2. Select **Image file(OMG)** as source in the Convert image file dialog and attach the desired image file.
3. Enter **Virtual hard disk (VHD)** as target and click **Start**.

You can also convert virtual hard disks(VHD) into an image file (OMG).

Note: The following options **cannot** be selected for a VHD: Compression, Encryption, and Split. In addition, only the following imaging methods are available "Only used sectors" or "Forensic" .



Sicherung in VHD konvertieren

Merge incremental images

If you have already created several incremental images, you can merge these to form a new base image. The newly created base image is now a "complete" image. Older images that contained only changes can be deleted once the merging has been completed.

1. Make sure that your computer will be able to access all drives where the base and incremental images are located.
2. In the menu bar under **Tools** click **Merge**.
3. A program window will appear where you can select and merge the existing image files.

Note: Only consecutive image files (Image of the changes) with the same base image may be merged together. By clicking **Image information** and the corresponding **Drive information** you will be able to view all of details regarding the image.

Validate image file

Under **Tools** is a function called **Validate image file**. This function checks the structural integrity of an image file. It determines whether the logical structure is intact. Such damage can be caused by virus attacks or defective hardware. In

addition, encrypted and/or compressed images will be checked to determine if decryption or decompression is possible without error.

Reasons for an abortive validation:

- Encryption and decryption are not functioning
- Compression and decompression are not functioning (Windows API/System interfaces)
- The user has changed the image file
- Image has been changed by a program driver (e.g. anti-virus software)
- Image is stored on a defective volume

Note: To make sure your image is created or restored without error, keep the validation process running until the imaging or restoration is completed. If you choose to "Skip" or "Abort", there's no guarantee that your image will be created or restored intact.

Check for drive errors

Under Tools is the function **Check drive**, which runs an intensive analysis of the file system and data storage interface to protect yourself against any possible loss of data.

CheckDisk is an assistant that leads you step-by-step through the examination of your drives. Simply follow the instructions in the dialog window and select your drive.

In the next stage the analysis is carried out. You can monitor progress by means of a progress bar where all the program status messages are listed.

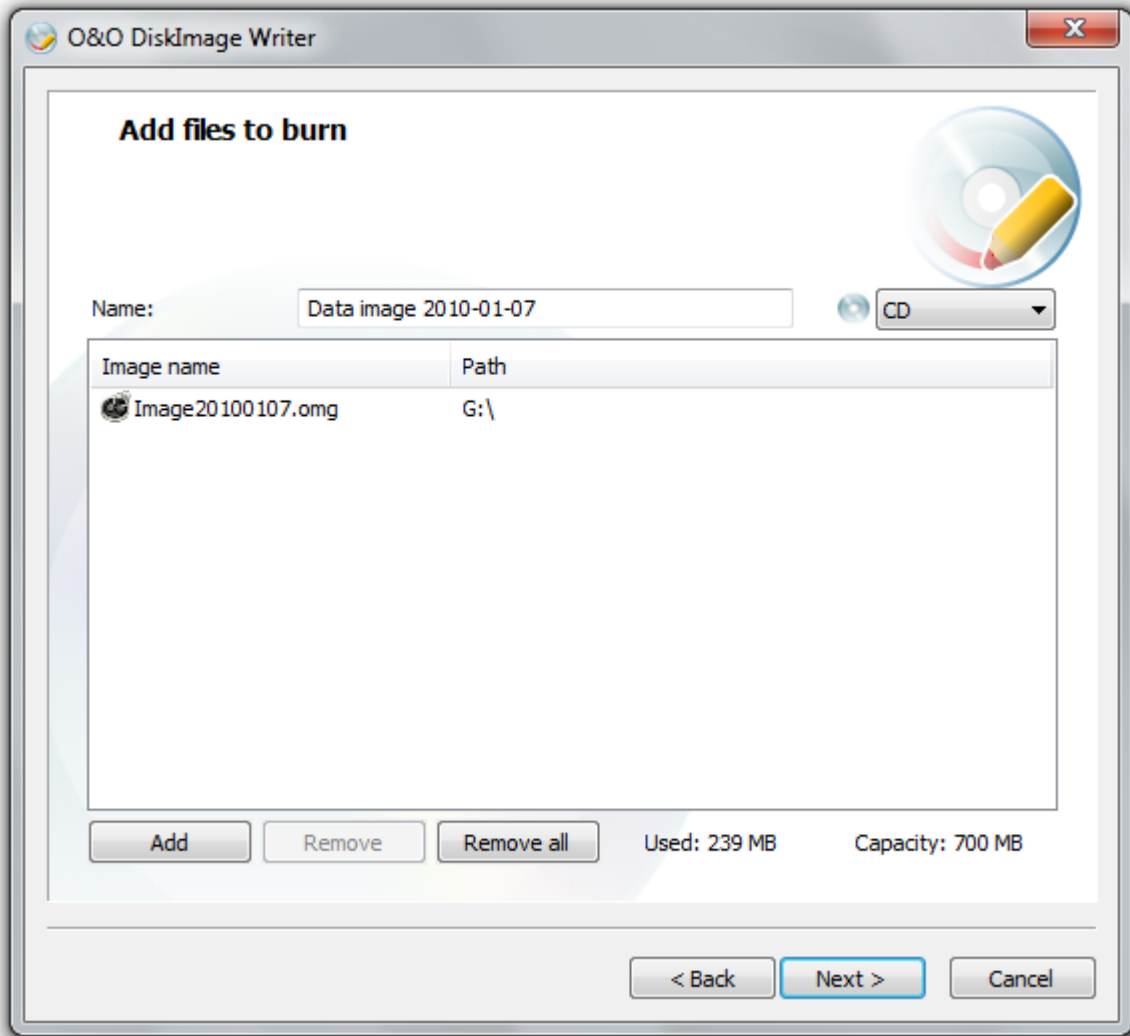
Save images onto CD/DVD

To save your image to CD/DVD, it is necessary to have first created an image, as described in the section entitled "Creating an image". The image file(s) must be stored on an internal or external drive. Only then will it be possible to save your image files (*.omg) or your virtual hard disk(*.vhd) to CD/DVD. Images (*.omg) or virtual hard disks (*.vhd) cannot be saved directly on CD/DVD without having first been saved on an external or internal drive.

1. Under **Imaging/Options/Image file/File size** limit the image files to the size of your blank CD/DVD. The image will then be split into multiple image files. The splitting of the image file at a later time is also possible, (See "Converting Image File").
2. Under **ToolsselectBurn image files**.
3. Follow the instructions in the dialog window.

Tip: Besides CD/DVDs the program also supports Blu-Ray Disks and HD/DVDs.

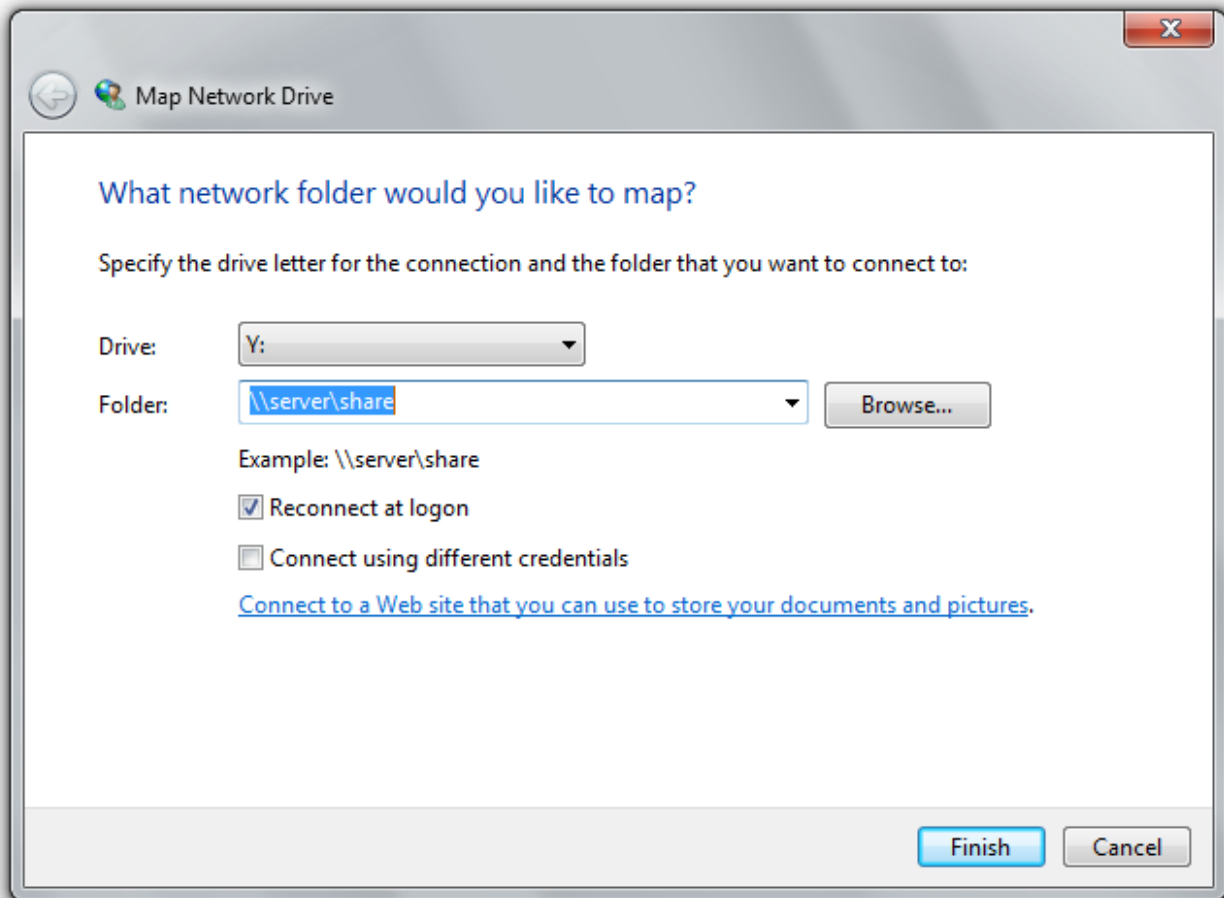
Note: When renaming individual parts of the image, it is recommended to keep the "number portion" of the filename (the number in parentheses) so that you can trace the order of the files and avoid problems when restoring the images at a later time.



Burn assistant

Map/Disconnect Network Drive

Under Tools in the ribbon bar, you can select the setting **Map Network Drive**. **Disconnect Network Drive** allows you to disable the connection.



Map Network Drive

Note: To access network drives for storing images or to restore from them, you have to authenticate yourself in the network. Read more about it in the chapter [Authentication within the network](#).

Change computer properties

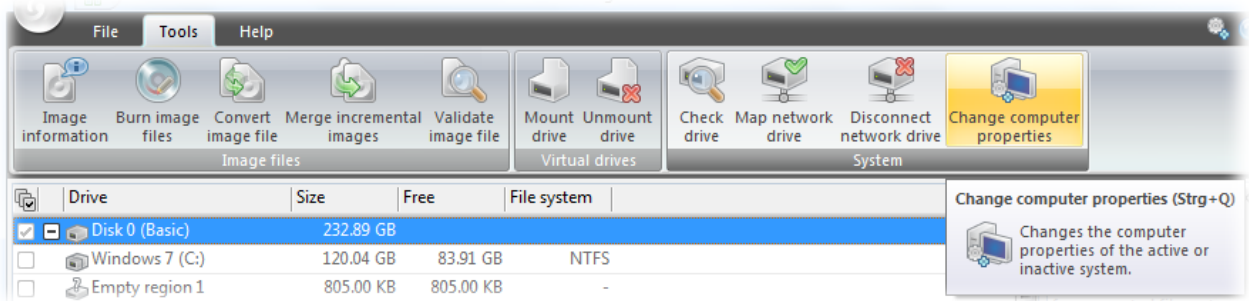
You can change the identity of your computer to avoid authentication problems when similar computer identities exist within a network. This can be helpful, whenever a system image is created on several computers within the network. The disk of a fully installed and configured Windows computer is transferred onto another computer.

Although this cloning method does save time and effort the problem that each cloned system has an identical computer SID might arise. This influences the security in working group environments. In addition, the security of transfer media might be inhibited in networks with many computer SIDs.

To avoid this problem, O&O DiskImage offers an option for changing the identity of the computer.

Note: If an error occurs while changing the current computer SID, then we recommend to reset the registration structures SECURITY and SAM.

1. Under **Tools** click **Change computer properties**.
2. Load the computer's inactive Windows system.
3. Then enter a computer name for your computer (Give new name). **Change** saves your settings and the computer identity is changed according to your entries. **Close** cancels the dialog without applying any changes.



Change computer properties

More:

[Settings for the restoration of differing hardware](#)

[Network authentication](#)

Settings for restoration on different hardware

O&O DiskImage gives you the option of restoring the image or clone of your system partition on a machine with different hardware than the one used for imaging/cloning. The M.I.R. feature can always be used when you've changed hardware, and these changes affect the functionality of the Windows operating system being started.

O&O DiskImage makes the adaptation automatically in three consecutive steps. As a rule, there's no need to change any of the default settings but you may enable/disable any of the individual steps. The following will explain the normal three steps of M.I.R.:

Note: You can read more about M.I.R. in the document "Machine Independent Restoration".

Replace hardware abstraction layer (HAL)

Windows operating systems have to be adjustable for a large number of hardware platforms. This adaptability is achieved through a special layer which "seals off" hardware architecture and other machine-specific details such as I/O interfaces, interrupt controller, and multiprocessor, etc. from the operating system. On a standard Windows, this layer is permanently installed and adjusted to the current hardware. Whenever the hardware is changed, this layer has got to adapted or replaced so that any programs installed on it will be able to again function without any problem.

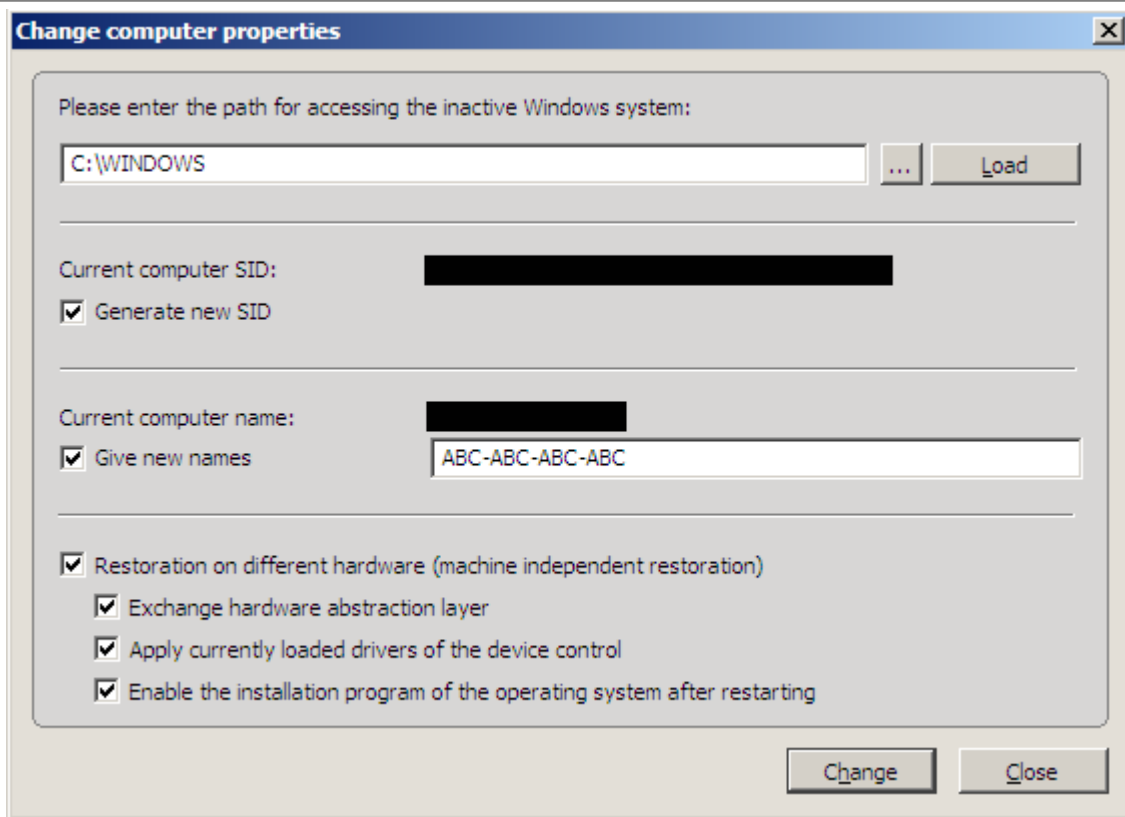
Transfer currently loaded"device control driver

Device drivers also involve an interface between the I/O manager and the corresponding hardware. Device drivers are not accessed directly, but rather, indirectly via the hardware abstraction layer. After replacement, the corresponding driver of new hardware has got to be installed in order to make sure it can work properly with this layer.

Enable the setup of the operating system after restart

In order for the Windows operating system to adjust automatically to modifications as well as to complete registration of the new hardware, this step instructs the Windows operating system that internal finalization of any information received is to be carried out at the next start.

Note: Starting with O&O DiskImage 5, adjustment to the new target system takes place automatically. If you're using an image that was created on an earlier version, you may have to enable certain settings manually. You can change settings under **Tools/Change computer properties**.



Change computer properties

Schedule functions

The Job Assistant makes it possible for program functions to be run automatically and on a regular basis. You can, for example, plan to have your data drives imaged once a week.

Note: If you're starting O&O DiskImage directly from a CD, scheduling and notification will not be available.

More:

[Create a job](#)

[Plan a schedule](#)

[Settings for a job](#)

[Create a job for incremental imaging](#)

[Run commands before and after a job](#)

[Job information](#)

[Editing jobs](#)

[Reports](#)

Creating a job – General information

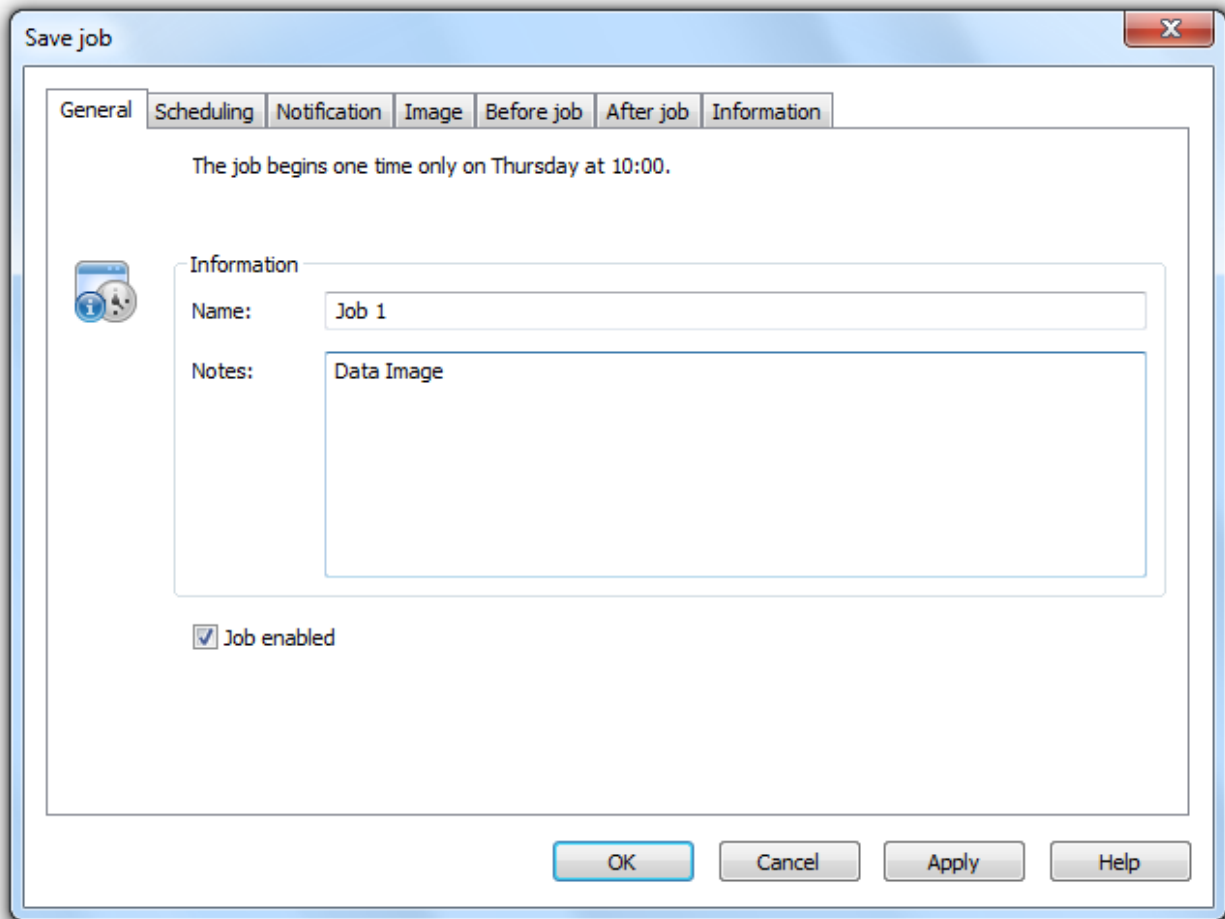
Before setting up a job, you'll have to select the corresponding activity.

1. Once the Start page is opened, click the activity desired, for example **Imaging**, **Clone drive** or **Restoration**.
2. Select a drive, or for the restoration, an image.
3. If you want to specify certain settings for a job, such as the imaging method, encryption or compression, click **Options**. Your settings will then be saved and applied to the subsequent job.
4. Afterwards, click **Add as job**.
5. Enter the name of your job in the dialog. This will be later used for preparing the report and will serve as information regarding the activity this job will run. The name of the job has only symbolic meaning and can also be applied to other jobs.
6. Specify further settings under [Scheduling](#), Notification or [Image](#) in Add as job.

In the field **Notes** you may enter text that can provide a few details about the job.

Job enabled

If you want to leave out a job for a short period of time, but don't wish to delete it altogether, you can disable it. In this way, the job will not be run until you once again enable it.

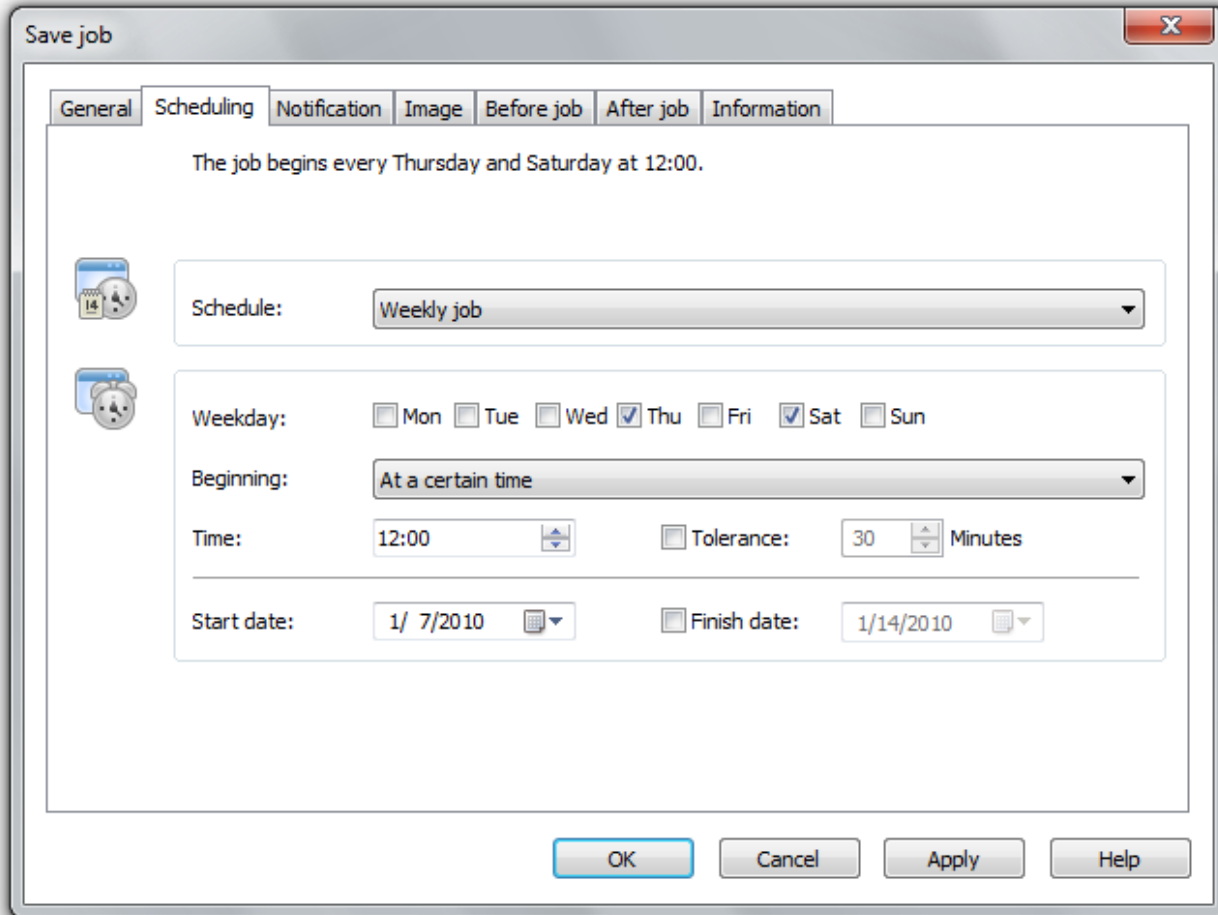


Job assistant general information

Scheduling

Under Scheduling in the Job assistant, you can specify the exact moment when the job should be run. A job can be performed one time only or repeatedly. The options for execution (date, day of the week) will change along with the corresponding selection.

Schedule functions



Execute once only:

- Choose the start event
- Time

Repeated execution:

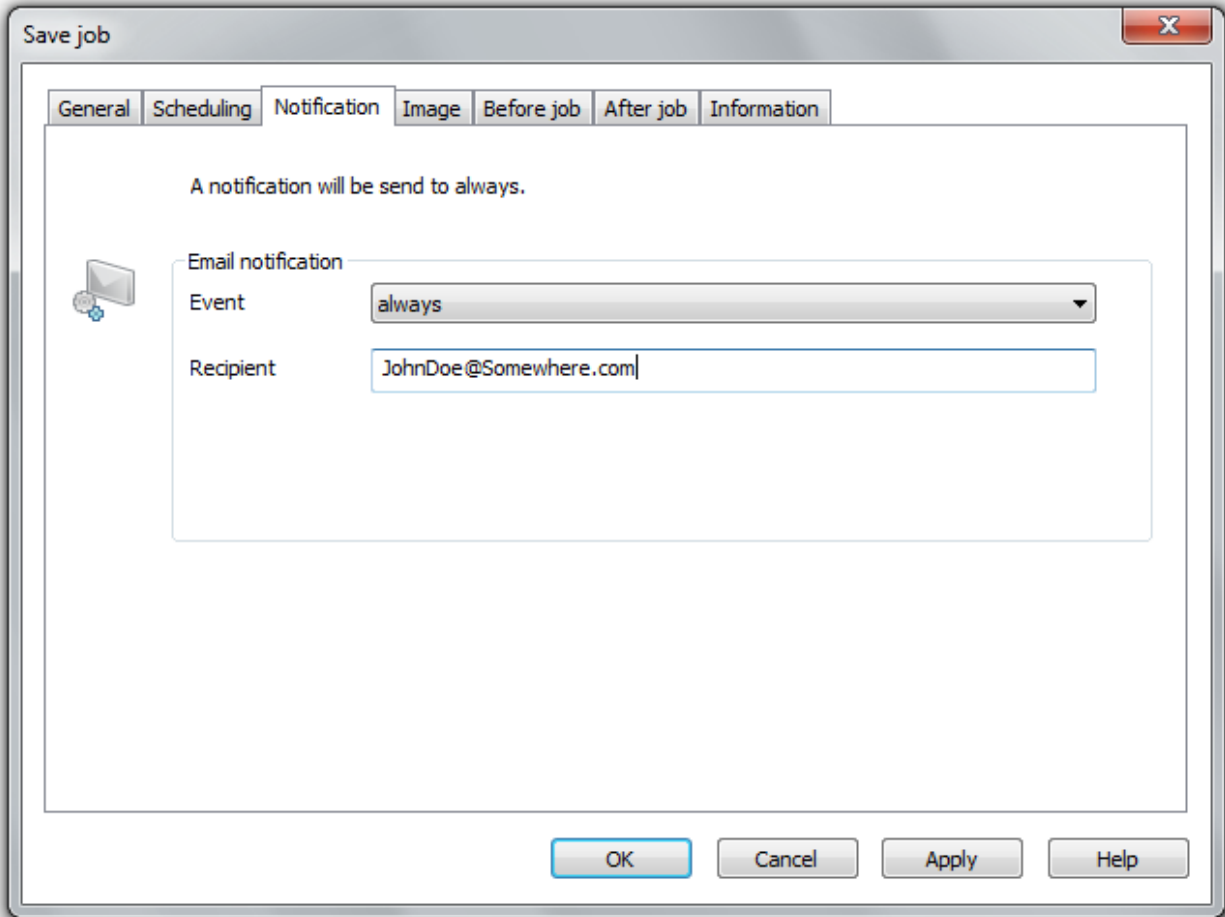
- Selection of weekday, date, and time
- Selection of start and finish dates interval The job will be performed, for example, five weeks in a row, once a week.

Notification

In the **Job assistant** under **Notification**, you can arrange to be notified by email about the running of tasks during events.

- If you want to be notified about the running of a job, select an event and enter your email address in the field for recipient.

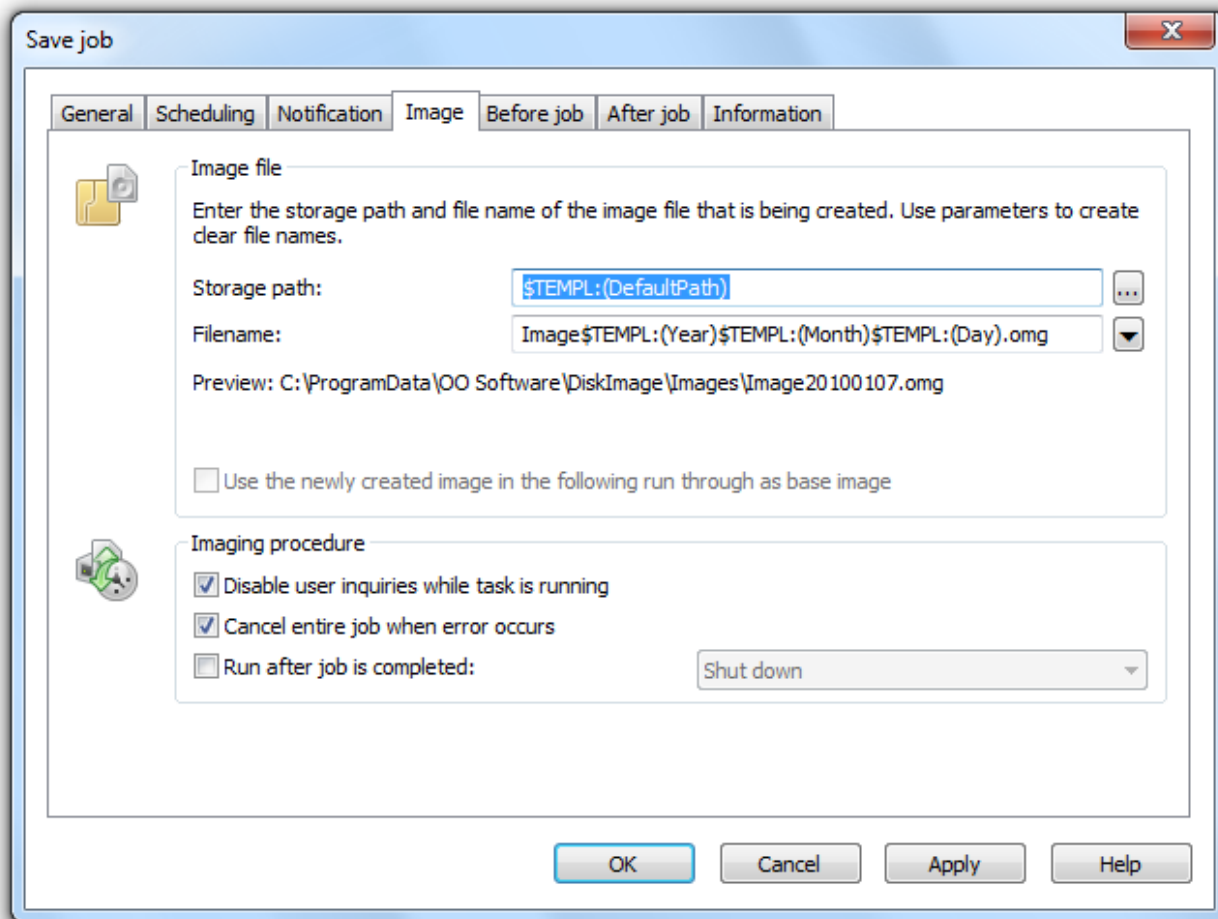
Note: In order for your entry to be successfully processed, you'll have to set the sender data of your email server in **Program settings** under [Notification](#).



Job: Notification

Settings for a Job

You can set additional options for your job in the third tab (**Image**) of the Job assistant. The choice of settings is based on your selected activity. For an imaging activity, you could, for example, enter a storage location and a name for the image.



Job assistant: Imaging

More:

[Disable User Inquiries while job is being run](#)

[Abort entire job when an error occurs](#)

[Run after job is completed](#)

[Characteristics of an Imaging Job](#)

Disable user inquiries while job is being run

User inquiries are questions that can arise during the normal course of running a job. The job will thereby be interrupted because the user either has to make a decision or additional information is required for continuing.

Schedule functions

There might, for instance, be a confirmation dialog if there's already a file name being used for the image.

Should this interactive option be turned off, in a worst case scenario there will be no confirmation dialog while the job is being run and it will be aborted by default and logged as an error.

Abort entire job when an error occurs

The job will be aborted whenever an error occurs.

Run after job is completed

Here you can choose between **Restart** and **Shut Down**. If you don't select anything, the computer will return to its condition prior to imaging. It will usually just remain on.

Characteristics of an imaging job

Target path

The target path to the storage location of the image will be applied to the program settings by default. You may, however, select or enter a new path manually.

Apply dynamically generated file names

For a file name, the terms "Image" and the dynamically mounted parameters "year", "month", and "day", will be used by default. In addition, you can select from a list of alternative parameters. If you're making, for example, a number of images on a single day, it's advisable to include the "time" in the file name. Otherwise, files with the same name would emerge and that could lead to the imaging process being aborted.

Note: If you're using O&O DiskImage on a computer in a network, the data from the computer will be automatically read and file names will be dynamically generated. You could, for example, add the "Computer Name" to the image name for use in a network.

Create a job for incremental or differential imaging

In order to create a differential or incremental imaging job, you'll need a [complete](#) or [base image](#) that was previously created. This complete image will serve as a base for creating differential/ incremental imaging jobs. The first image after the complete image is always a [differential image](#). Successive incremental images can use differential or other [incremental images](#) for the base image.

1. Select **Image of the changes** from the O&O DiskImage Start Page.
2. Enter the base image you want to use in the dialog window.
3. Then click **Add as job** in the ribbon bar.
4. Enter the name and the schedule for the imaging in the job dialog.
5. Under **Imaging** you can either use the standard path or manually enter another storage location for the image.

The option **Use created image as base image for the following execution** is enabled by default. [Incremental images](#) will always be created based on the last image of changes. As a result of this, the data volume of the incremental image will end up being very small. All previous cumulative images and the last complete image will be needed for restoration. We recommend saving the complete image as well as any successive image of the changes in one folder.

Schedule functions

If this is not possible, the default check has to be removed from **Disable user inquires while task is running**. The process runs only partially automatic because every time an imaging takes place, any previous images will be requested. If these are not entered, the job will be aborted as a result of error.

If you don't enable the check for the option **Use created image as base image for the following execution**, differential images will be created based on the last complete image. Restoration will only require the last differential image and the complete image. Incremental images that were created in the meantime can be deleted. The data volume of this differential image is larger than an image created using the option mentioned above.

Run commands before and after a job

Carrying out commands before and/or after a job can allow you to stop certain Windows services and then restart them again afterwards. If you're using O&O DiskImage on a Microsoft Exchange or SQL-Server, you could stop these services beforehand, create the image and then have them automatically start again once the imaging is done. You no longer need to create a script to do this.

Run commands before a job

If you select this option, the commands entered in the text field will be carried out before the job begins. You can also import existing command files so that their contents will be shown in the text field. Just click on **Import** and replace and select the file in the dialog (.BAT, .CMD or .TXT). Confirm with **OK**.

Note: Please make sure that all commands exist and are able to be carried out on the target computer. All commands will be carried out under the SYSTEM User and his permissions.

Run commands after a job

If you select this option, the commands entered in the text field will be carried out when the job is completed. Entry and application is similar to the command instructions in "Before Job".

Note: Please make sure that all commands exist and are able to be carried out on the target computer. All commands will be carried out under the SYSTEM User and his permissions.

Job information

The precise settings of a job are listed under **Information** in the Job assistant. The view provides information only; you will not be able to make any changes there.

Editing jobs

1. To edit a job, select **Jobs** on the Ribbon Bar in the Start Page of O&O DiskImage.
2. You can edit a job by making a check on your selection in the job list.
3. Then click on **Edit**. The Job assistant will then appear with the settings of the job.
4. Make the desired changes in the properties and confirm the changes with **OK**.
5. If you decide not to apply the changes, then click on **Cancel**.

For selected tasks, e.g. deleting or importing/exporting of one or several jobs, you have to check the desired jobs in the list. Afterwards, you can run desired tasks on all selected jobs.

Schedule functions

More:

[Create job](#)

[Checking a job](#)

[Delete Job](#)

[Run jobs](#)

[Export jobs](#)

[Import jobs](#)

Checking a job

To check if the settings for a job are valid, i.e., to check if its content and syntax can be executed on a local system, select **Jobs** in the file menu on the Start page of O&O DiskImage.

Then select the job you want to check and click **Check**.

Delete Job

To delete a job, select **Jobs** in the file menu on the Start page of O&O DiskImage.

Mark the job you wish to delete with a check and then click on **Delete**.

Run jobs

To carry out a job, select **Jobs** in the file menu on the Start page of O&O DiskImage.

Start will begin the selected activity after a security question is answered.

Export jobs

To export a job, select **Jobs** in the file menu on the Start page of O&O DiskImage. Mark the job selected in the job list and then select **Export**. Save the job file (*.xml) on an external storage volume so that it can be applied again to another computer (see "Import jobs").

Import jobs

To import a job, select **Jobs** in the file menu on the Start page of O&O DiskImage und select the function **Import**. Select the desired job in the dialog window. This will then be added to the Job List.

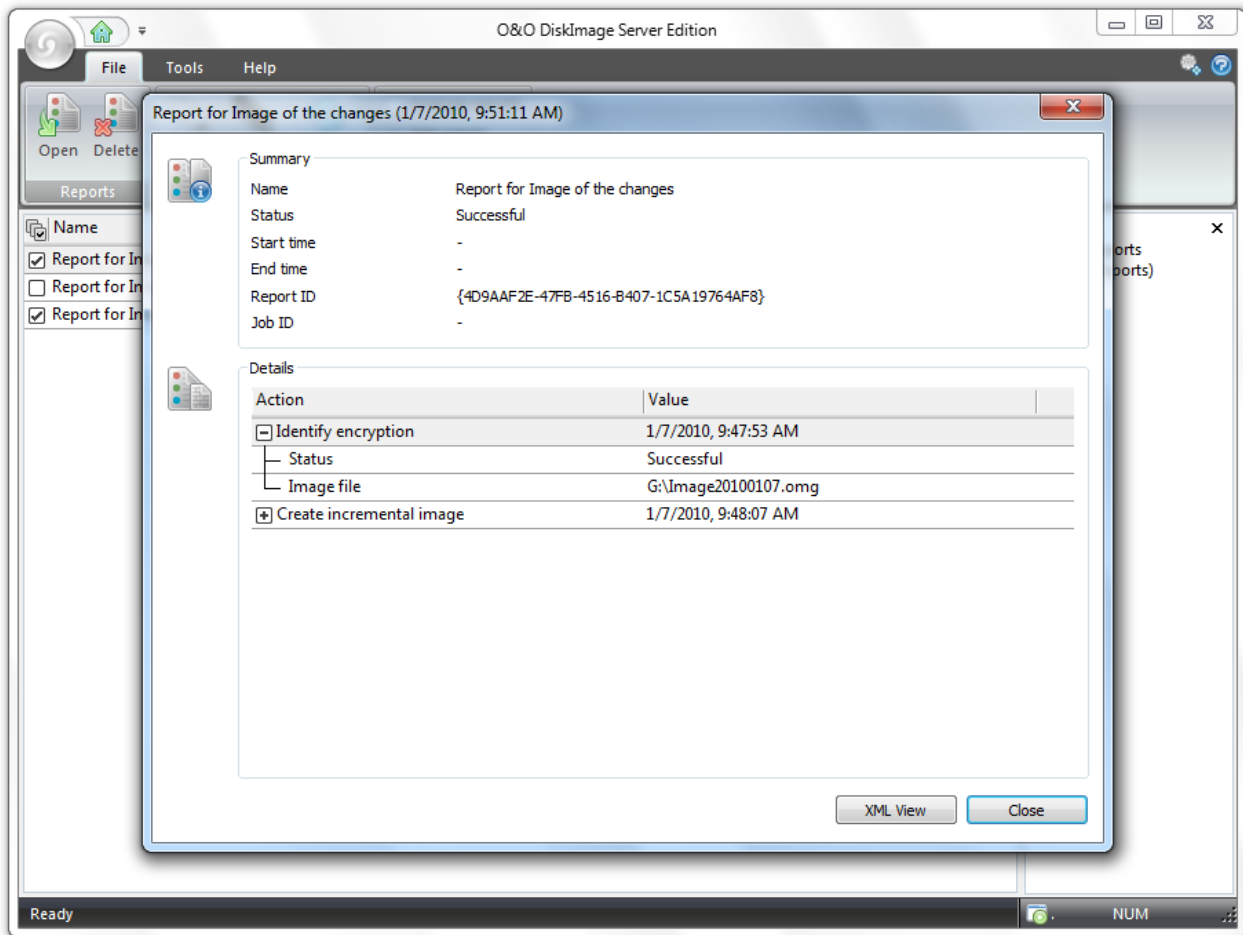
You can then transfer the created job from one computer to another, without having to make new settings for the job.

Reports

A status report will be created for every action performed by O&O DiskImage. It can be accessed as an XML document over **Reports** in the **Application menu** on the Start page.

Schedule functions

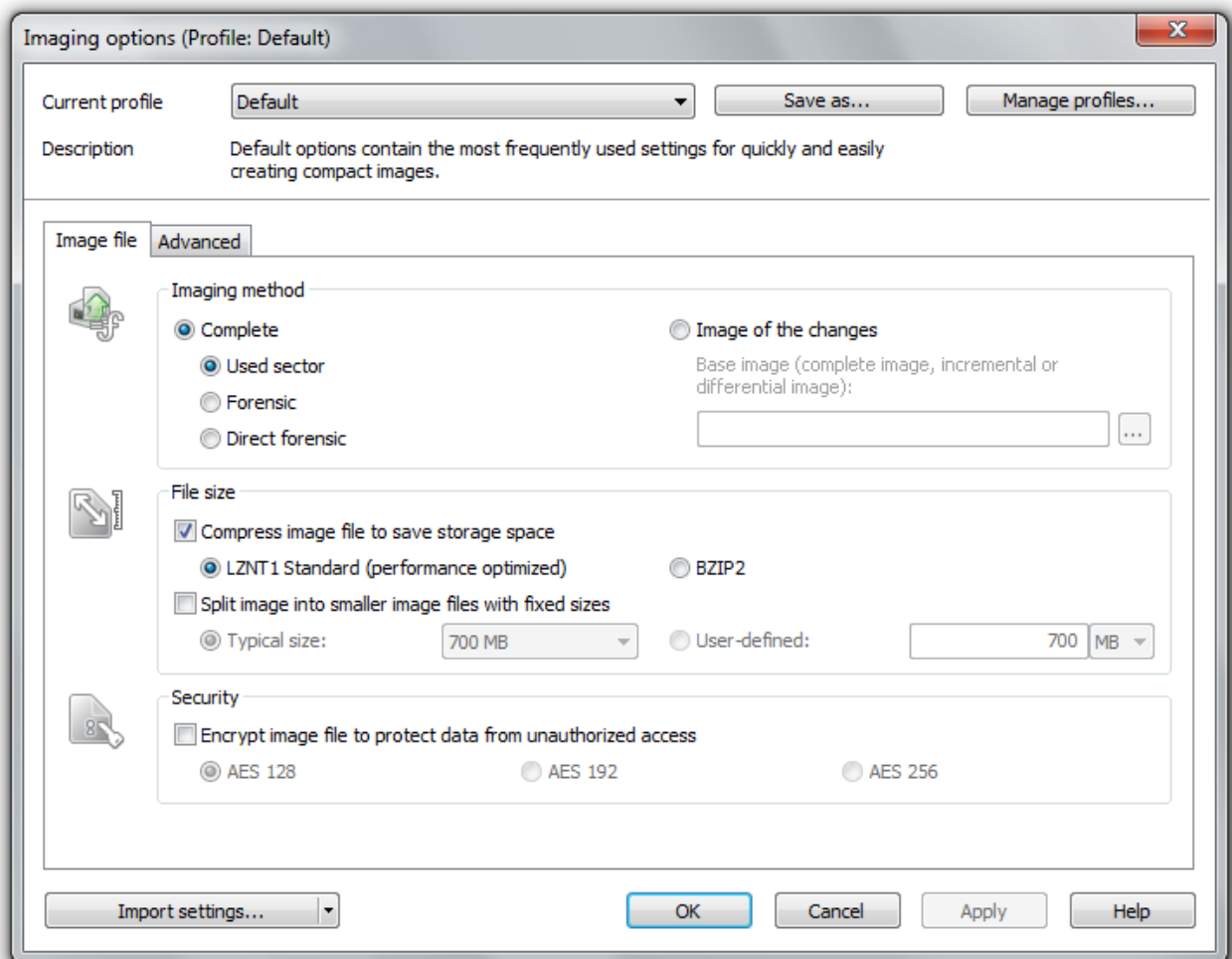
In the report you will find all information about the progress of an installation or a job. You can execute further operations for reports, such as **Delete** or **Refresh**.



Reports

Image settings

Under the menu heading Imaging, you can implement settings for your image by clicking on **Options**. All image files will then be created by using these settings by default. To specify the settings, you need to open the Imaging options window.



Imaging options

More:

[Selecting imaging methods](#)

[Specify the size of an image file](#)

[Encrypting image](#)

[Compress image](#)

[Exclude files from an Image](#)

[Exclude data from compression](#)

[Lock a drive](#)

[Data comparison with checksums](#)

[Creating an image profile](#)

Selecting imaging methods

Under **Imaging/Options/Image file** you can specify which imaging method should be applied as standard to every new image. In most cases, the default option **Used sector** is recommended.

More:

[Used sector imaging](#)

[Images of changes](#)

[Forsensic imaging](#)

[Direct Forensic imaging](#)

Used sector imaging

Using this imaging method will limit the imaging process to only used sectors on a drive. This method will let save time, computer performance and disk space, and is the program's default imaging method.

Image of the changes

If you only want to save changes made since the last imaging, select **Image of the changes** as task on the Start page of O&O DiskImage. This will allow you to create an image that saves only those changes that have occurred since the last [base image](#). These [incremental/differential](#) images generally require less hard disk space than a [complete image](#).

Note: if you want to create an image of the changes, you will need to have an existing complete image of the respective drive available to use as a base image. Afterwards, the image of the changes that you created can also serve as a new base image.

Note: the option **Compare data with checksums** is always set by default. The last incremental/differential image created is enough to serve as the base image when creating an **Image of the changes**. If Use checksums to manage unchanged data is not set, you will need the last base image and all existing incremental images because all of them will be needed as part of the imaging process.

Forsensic Imaging

The imaging method is especially useful when creating images of non-supported files system or when, for example, you would like to recover deleted data from a source drive with special data recovery software. With this method, an exact sector-level copy of the source drive is made. By saving all sectors of a partition or drive, the unoccupied and deleted portions of file systems can be imaged in their entirety.

Direct Forensic

The direct forensic image method, though similar to the forensic imaging method mentioned above, is able to carry out a very special function. The direct forensic image method, though similar to the forensic imaging method mentioned above, is able to carry out a very special function. The difference, however, is that data are read through low-level system interface. This makes it possible to create an image that includes encrypted and hidden files, when encryption software is in use on a system, for example,

Specify the size of an image file

An image can be split into multiple image files. If a storage volume lacks the needed space to contain a full image of your selected drives, you will automatically be requested to enter another target location. It is also possible to manually set the maximum size of an image file before creating the image. If the image being created is larger than the entered file size, an additional image file will be created.

This function is especially useful when you plan to burn your image onto a CD/DVD at a later time. Sometimes a CD/DVD is not large enough to contain the entire image file. For this reason, it is recommended to limit image files to the size of the blank CD/DVD onto which you will be writing your images.

The image file can also be split at a later time using the [Convert image file](#) function. It is, however, recommended to split images at the time they are created to avoid any confusion that may arise.

- Under **Imaging/Options/Image file/Split image into smaller image files with fixed sizes** you can specify the size and limit the amount of image files.

Encrypting image

Encryption based on the AES Algorithm is possible up to 256 Bit. This provides your image with optimal protection against attacks by third parties.

- You can select the encryption grade for your files under **Imaging/Options/Image file/Security**.
- You will then be asked to enter a password at the **Create image** stage.

Also, an additional splitting of the image is possible under [Convert image file](#).

Compress image

Under **Imaging/Options/Image file** you can find **Compress image, which will let you save storage space**. You can choose from the LZNT1 standard or the BZIP2 process.

LZNT1: A compression type based on the Lempel-Ziv algorithm, which is laid out on a real time application. The speed is preferred over the rate of data compression.

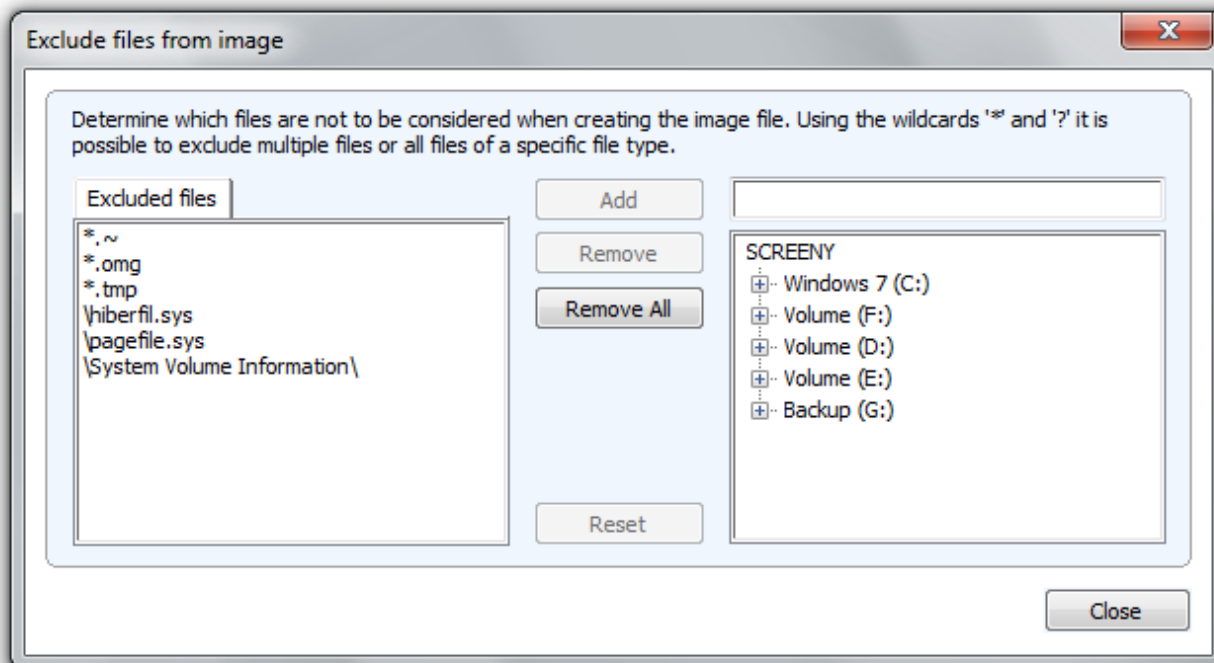
BZIP2: is a block type compression process, as a result, the compression rate is preferred over the actual velocity and time it takes.

You can also run a compression of the image under **Convert image file** in the Tools menu.

Note: Compression increases the time required to create an image file. However, the file then requires less disk space on the storage volume.

Exclude files from an image

Note: Several minutes may be needed for excluding files, depending on the amount of data on the hard disk.



Exclude files from an image

Exclude files from an Image When using the imaging method Used Sector Imaging you have the option of excluding data from the image or compression. Please follow these instructions for excluding data:

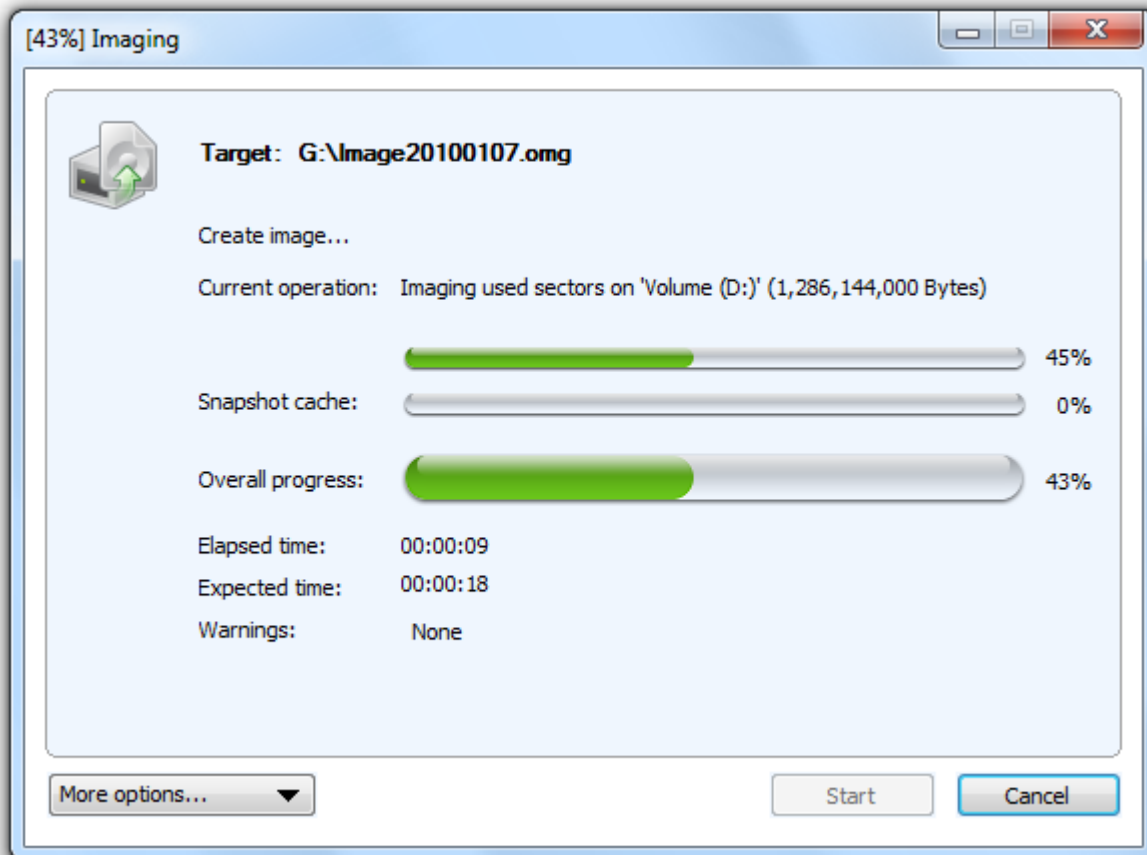
1. Mark the drive you wish to image with a tick.
2. Make sure you have selected the method **Used sector** under **Imaging/Options**.
3. Click **Advanced** to open the dialog to exclude files.
4. In the right hand window select the files and directories you wish to exclude from the imaging and confirm this with **Add**. Only the data on your selected drives will be excluded.
5. You can close the window after your settings are made. The changes you made will then be applied.

Exclude data from compression

Data that are already compressed, e.g.*.rar or *.zip files, will not be further compressed during the imaging process and, for this reason, may be excluded from the compression process. To exclude data from compression, please follow the procedure laid down in [Exclude files from an image](#).

Lock a drive

You can lock the drive you wish to image during the imaging process. This prevents any changes being made to the drive during creation of an image. The drive will no longer be displayed in Explorer and all applications will be closed. The drive is not locked by default.



Snapshot cache view(here an empty cache)

- To lock a drive, under **Imaging/Options/Advanced** select **Imaging procedure/Lock drive during imaging**.

If you leave a drive unlocked during an imaging, for instance, because you want to continue working on the drive, the original status will be "cached", i.e. stored in the working memory buffer. The working memory buffer is however restricted. You can see how much is available in the Memory buffer display.

Note: It is not possible to lock a system partition.

Please note: Should you exceed the available working memory, the original data sectors will no longer be saved and included in the image. This makes the image inconsistent and may render it unusable. In this case, you should, after imaging, mount the image (Mount the image as a drive) and check its accuracy.

Note: To avoid overloading the memory buffer, close or stop all write procedures on the source drive, for example, running a defragmentation.

Ignoring bad sectors

Should an error occur, you can specify under **Imaging/Options/Advanced** whether the read process should be aborted or continued. If continued, the bad sector will be saved in the image as an unused sector. The remaining data that are still readable will be present in the image.

Data comparison with checksums

Unaltered data resulting from incremental images is saved using checksums by default. These files are fractionally larger. It is sufficient when, at the next incremental imaging, you use a previous incremental image (with checksums) as the base image. This function is activated by default. If you save all images to a single directory, you might consider deactivating this function. Your images will then take up less space on disk.

- Make sure the setting, **Use checksums to manage unchanged data**, is enabled under **Imaging/Options/Advanced**.

Create an image profile

Under **Imaging/Options,Current profile**, you can reset the current settings to **Default**, or select an already existing profile.

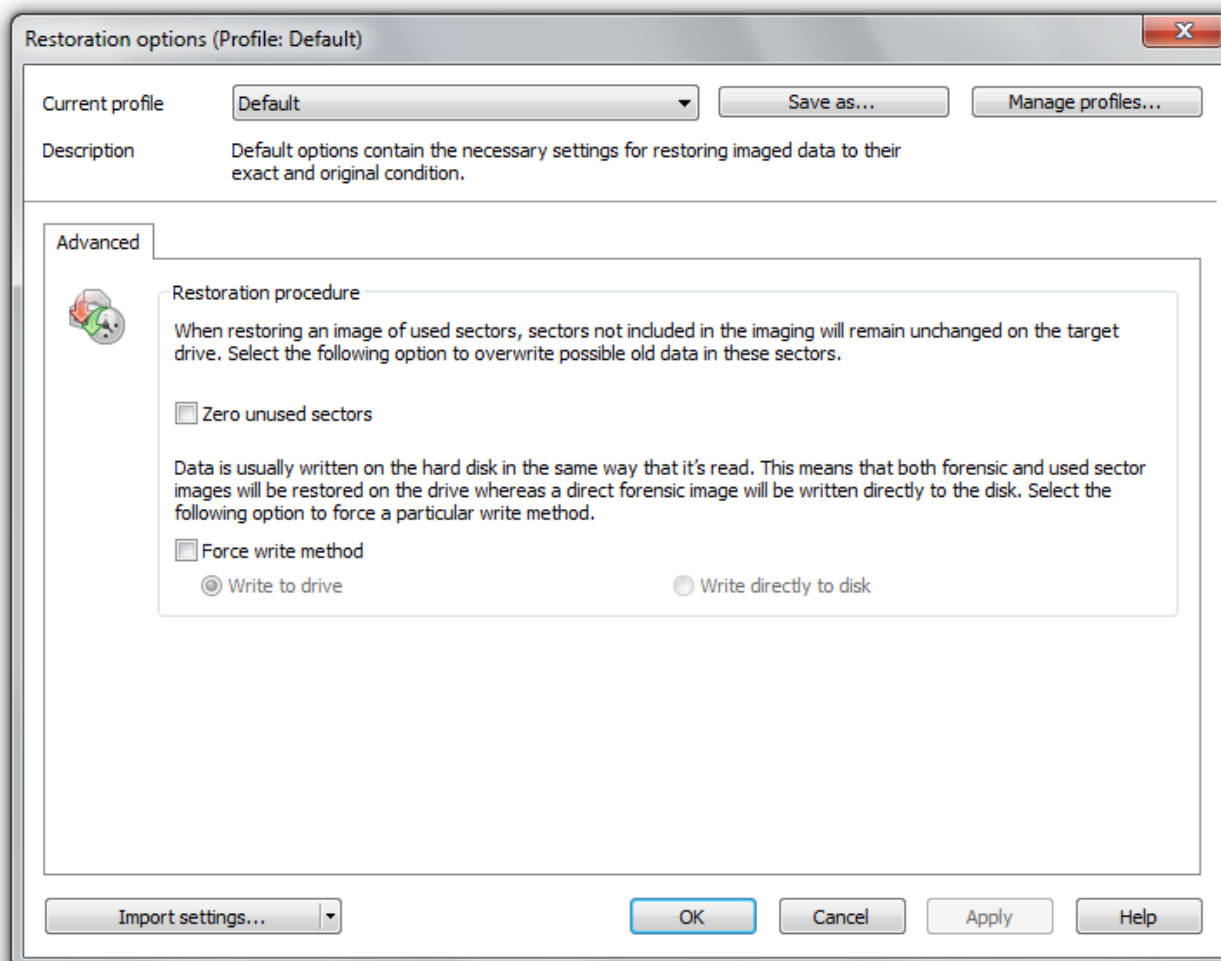
Under **Current profile** you can select a preset Multimedia or Archive profile. The Multimedia profile automatically excludes already compressed music and video data (i.e. *.avi, *.mp3, *.mpeg) from the compression. The Archive Profile excludes other compressed data such as *.zip or *.rar.

If you would like to save your user-defined settings, please follow these instructions:

1. Enable your settings under **Imaging/Options**.
2. Select under **Imaging/ Options/ Save as**.
3. Give your newly created profile a name in the dialog window and confirm.
4. Under Manage Profiles you can change or delete an existing profile.

Restoration options

Under **Restoration/Options**, you can specify the settings for restoring data images. To specify the settings, you need to open the Restoration options window.



Restoration options

More:

[Overwrite unused sectors](#)

[Creating a restoration profile](#)

[Write directly to disk](#)

Write over unused sectors

Under **Restoration/Options** you can select **Zero unused sectors** should you wish to overwrite unused sectors with zeros: After overwriting, not even special data recovery software will be able to restore these deleted data.

Creating a restoration profile

Under **Restoration/Options** you can return the current settings for an imaging back to their default settings or select an already created profile.

Under **Current profile** you can choose between **Default** and **User-defined**.

If you want to save your User-Defined settings, then do the following:

1. Activate your settings under Restoration Options
2. Select **Save as**
3. Give your newly created profile a name in the dialog window and confirm.

Under **Manage profiles** you can change or delete an existing profile.

Force writing method

You can force a writing method under **Restoration/Options/Advanced**. "Write to drive" is the default writing method used during restoration of images created with the "Used sector" or "Forensic" methods. The writing method "Write directly to disk" is only used with "Direct forensic" imaging. You can, however, also force a user-defined writing method.

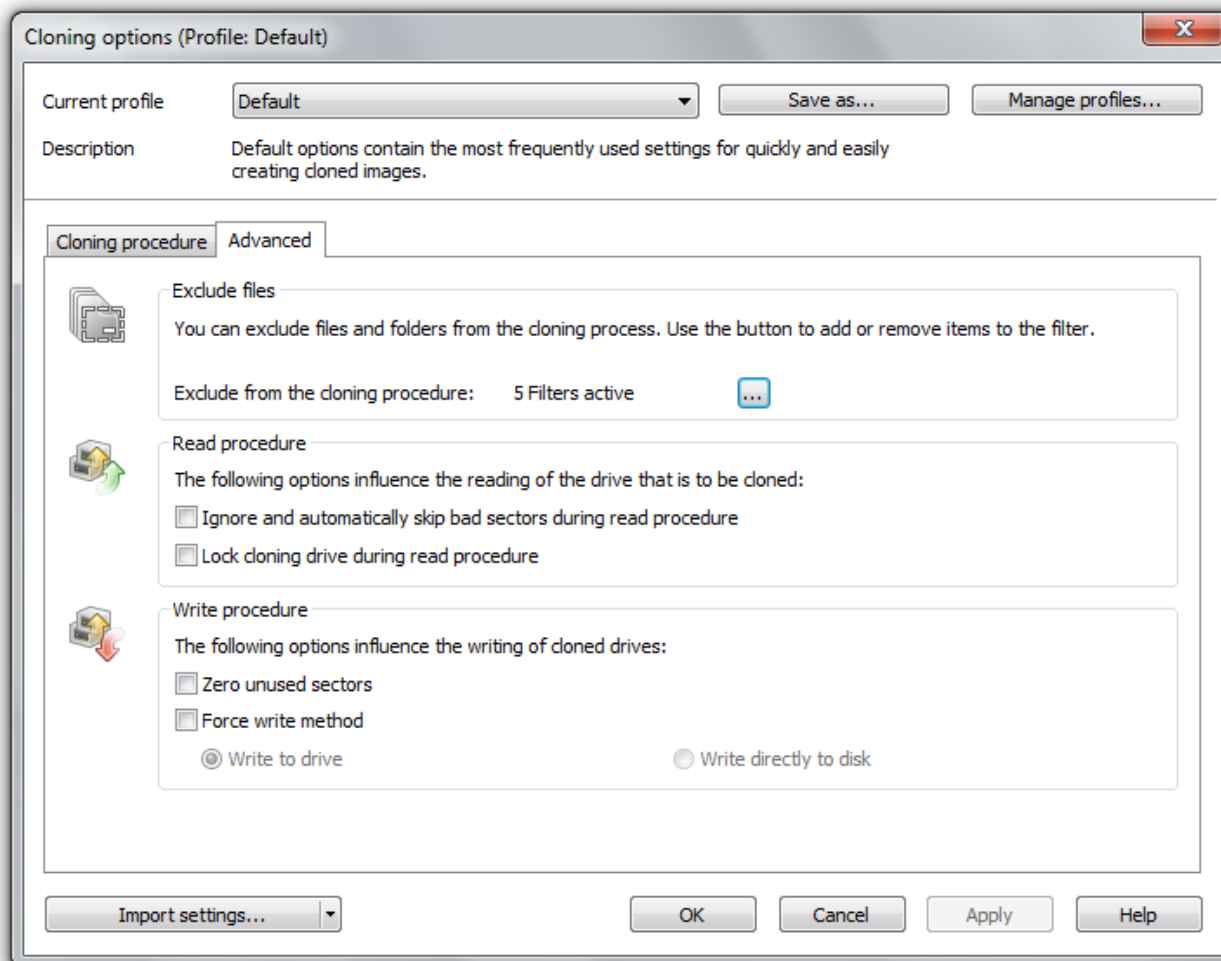
- Enable **Force writing method** and select the respective method.

Using the option **Write to drive**, data will be written to the drive with help from the operating system, and not from the offset to the disk.

With the option **Write directly to disk**, you can decide whether a restoration should be written directly to a disk, bypassing the file system driver. This function applies especially to encrypted disks and is required for restoring any such disks that were imaged using the direct forensic method.

Settings for cloning drives

Under **Clone Drive/Options**, you can specify the settings for cloning drives. To specify the settings, you need to open the Cloning options window.



Settings for cloning drives

More:

[Set a cloning method](#)

[Lock a drive](#)

[Ignoring bad sectors](#)

[Overwrite unused sectors](#)

[Write directly to disk](#)

[Set a copy profile](#)

Set read method

Just as you can when creating an image, under **Clone drive/Options**, you can set your individual read method (Cloning method). The cloning methods are constructed in a way similar to the imaging methods.

You can choose between the "Used sector", "Forensic" or "Direct forensic" methods. You can read more about this under [Image options](#).

Lock a drive

During the cloning process you can lock the drive from where you wish to clone an image. This prevents interim changes to the drive being made during creation. The drive will no longer be displayed in Explorer and all applications will be closed. The drive is not locked by default.

1. To lock a drive, activate it under **Clone drive/Options/Advanced**
2. If you leave a drive unlocked during an imaging, because, for instance, you want to continue working on the drive, the original status will be "cached", i.e. stored in the working memory buffer. The working memory buffer is however restricted. You can see how much is available in the Memory buffer display.

Please note: Should you exceed the available working memory, the current changes will be written directly to the target drive. This makes the image inconsistent and may render it unusable.

Note: To avoid overloading the memory buffer, close or stop all write procedures on the source drive, for example, running a defragmentation.

Ignoring bad sectors

Should an error occur, you can specify under **Clone drive/Options/Advanced** whether the read process should be aborted or continued. If continued, the bad sector will be saved in the copy as an unused sector. The remaining data that are still readable will be present in the image.

Write over unused sectors

Under **Clone Drive/Options/Advanced**, you can select **Zero unused sectors** should you wish to overwrite unused sectors with zeros. Data that were once saved there will now be permanently deleted. After overwriting, not even special data recovery software will be able to restore these deleted data.

Force writing method

Under **Clone drive/Options/Advanced** you can force a writing method. "Write to drive" is the default writing method used for the "Used sector" and "Forensic" cloning methods. "Write directly to disk" is the only writing method used during "Direct Forensic" cloning. You can, however, force a user-defined writing method.

- Enable **Force writing method** and select the respective method.

Settings for cloning drives

Using the option **Write to drive**, data will be written to the drive with help from the operating system, and not from the offset to the disk.

Using the option **Write directly to disk**, you can decide whether restoration should be done directly to disk, by-passing the file system driver. This function applies especially to encrypted disks and is required for restoring any such disks that have been imaged using the direct forensic method.

Create a profile for cloning

Under **Clone Drive/Options**, you can reset the default settings for cloning or select an existing profile.

Under **Current profile** you can choose between **Default** or **User-defined**. If you wish to save your user-defined settings for cloning, please follow the instructions below:

- Select **Save as** and enter a name for the new profile.
- Under **Manage profiles** you can change or delete an existing profile.

Frequently asked questions

When and how often should I make images?

We recommend imaging on a regular basis (at least once a month). The more regularly it's performed, the more up-to-date the data contained within those images will be. As a guiding rule, you should always image an intact system.

Which drives should I image?

You should generally image all drives, meaning the system drive (Windows), primarily Drive C, and all remaining data drives where private and business data, e.g. customer data, photo collections or music are stored.

Where should I store my image?

Don't save the image on the same hard disk where the imaged drive is located. It should be ideally stored on an external hard disk or a CD/DVD.

I just bought myself a new computer. If I take a complete image of my old computer, can I restore it to my new one?

Restoring data drives is not a problem even with differing hardware. However, system partitions can only be restored on differing hardware using the Start CD and the integrated M.I.R. function (Migration Independent Restoration). For further information, please read the PDF document "Migration Independent Restoration".

Do I have unlimited use of all functions with the trial version?

The trial version is not restricted – all program functions are fully operational. You should note, however, that restoring a system partition is only possible with the bootable O&O DiskImage CD, included when you purchase the product.

When do I need the bootable CD from O&O DiskImage?

You will need the Start CD, if you want to restore your entire computer or a system partition. The Start CD can also be used, if the operating system doesn't start up anymore.

How do I save an image to CD/DVD?

1. You must create an image file(s) and save it to your hard disk before you can write it to CD/DVD.
2. When creating the image, under **Imaging/Options/File size**, you should restrict the maximum image file size to the size of the intended removable medium where it will be saved.
3. Should the image exceed the selected maximum file size, it will be split into several image files.
4. You can then burn the image files to CD/DVD.
5. Select **Tools** on the Start page, then on **Burn image files** and follow the instructions.

What do I do when my image is too big for a CD/DVD?

1. If the Image you already saved to your hard disk is too big for the blank CD/DVD, you can, of course, still split the image file.
2. Under **Tools**, open up **Convert image file**.
3. Select the Image you wish to change by using **Add**.
4. Then select **Split** and enter the required maximum file size of the individual parts.
5. During conversion, one copy of the Image will be made while the original remains unchanged.

I have split the image and saved it on various storage volumes (CD/DVD).

Frequently asked questions

I want to:

- restore this image
- display drives from the image
- use the image as a base image for incremental imaging purposes
- Merge Incremental Images
- convert the image file

Before you go ahead with any of the above named steps, we strongly advise you to save all parts of the Image in a folder on your hard disk. Please ensure the folder is not on the drive to where you wish to restore the Image. Once you have done this you can complete the steps outlined above by simply following the instructions in the corresponding chapters of the User's Guide.

Can I continue working during the imaging process?

You can continue working and making changes without any problem.

The working memory buffer is however restricted. You can see how much is available in the Memory buffer display. See Chapter „Lock a Drive“.

Can I still change the image retrospectively?

Under Tools you can find the function Convert Image File. This enables you to change certain properties and contents of the image retrospectively.

I have created an image of several drives. Can I extract the image from just one of those drives and store it separately?

Follow the instructions below:

1. Under **Tools** select **Convert image file**.
2. Select the image using **Add** and then select the drive you wish to separately image.
3. Click **Open** and select a drive. After confirming with OK, click Start.
4. After confirming with (OK) click on **Start**.
5. The old image remains unaltered.

What is the difference between a clone and an image?

Using the **Clone drive** function, you can make a 1:1 copy of a drive including all its stored data, without producing any image files. The storage volume /drive is saved directly without compression. The advantage of a clone as opposed to an image is that the detour through an image file is avoided. You can directly access the drive's clone without having to restore the drive itself. You do, however, require a lot more storage space for a clone than for an image.

Important! When cloning your drive (source drive) the selected target drive will be overwritten. You should therefore save your copy on an external hard disk, either in an unused region or overwrite a previously selected drive purely for this purpose.

Why are temporary files created?

Frequently asked questions

If you leave a drive unlocked during an imaging because, for instance, you want to continue working on that drive, the original status will be "cached", i.e. stored in the working memory buffer. "Temporary files" are created in the process. The working memory buffer is however restricted. You can see how much is available in the Memory buffer display.

What is the advantage of an incremental image?

An incremental image normally has a smaller data volume as a base image. In addition, you can ascertain the differences, more precisely, the changes made since the base image was created.

My incremental image is not smaller than my base image. What is the reason for this?

This can occur if you have, for example, defragmented your computer in the meantime. The newly structured file segments will then be recognized as "changes" and imaged as new files.

What does "Drive cannot be locked" mean? Does this affect the data imaging?

Because of the constantly running system processes, your system partitions cannot normally be locked. You get this notification even when you want to image a data drive and this is directly integrated into the system processes. The notification doesn't generally have an effect on the imaging process; this is still able to be run without a problem. To be totally sure, shut down all running system applications, e.g. defragmentation or cloning processes, before imaging.

While imaging, O&O DiskImage reports that the target volume is too small although the source drive is smaller than the target volume. What is the reason for this?

Make sure you haven't selected the entire hard disk as your source. Example:

You have a hard disk with 100GB that is divided into two partitions:

- System partition (20GB)
- Data partition (80GB)
- While trying to save the system partitions on an external 40GB hard disk, O&O DiskImage reports that the target volume is too small.

By just making a check, you can select the system partitions as your only source, and not the entire hard disk.

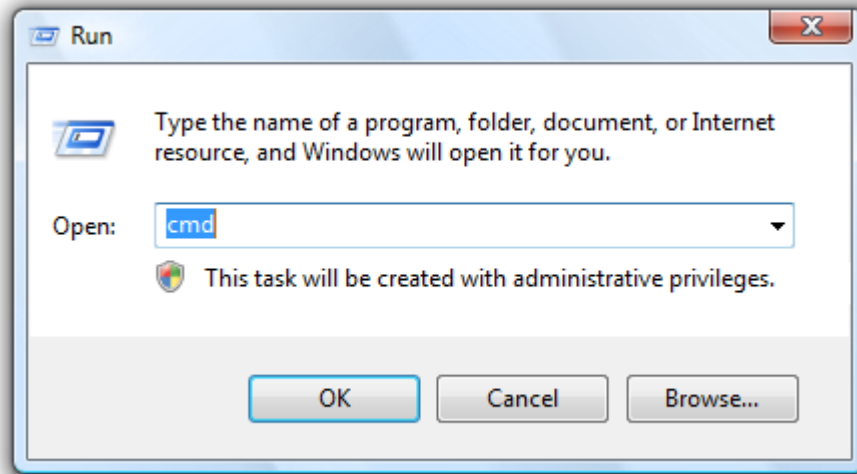
Frequent questions on authentication

Where do I find the domain and user name which I can use for authentication?

If you are not sure, please proceed as follows:

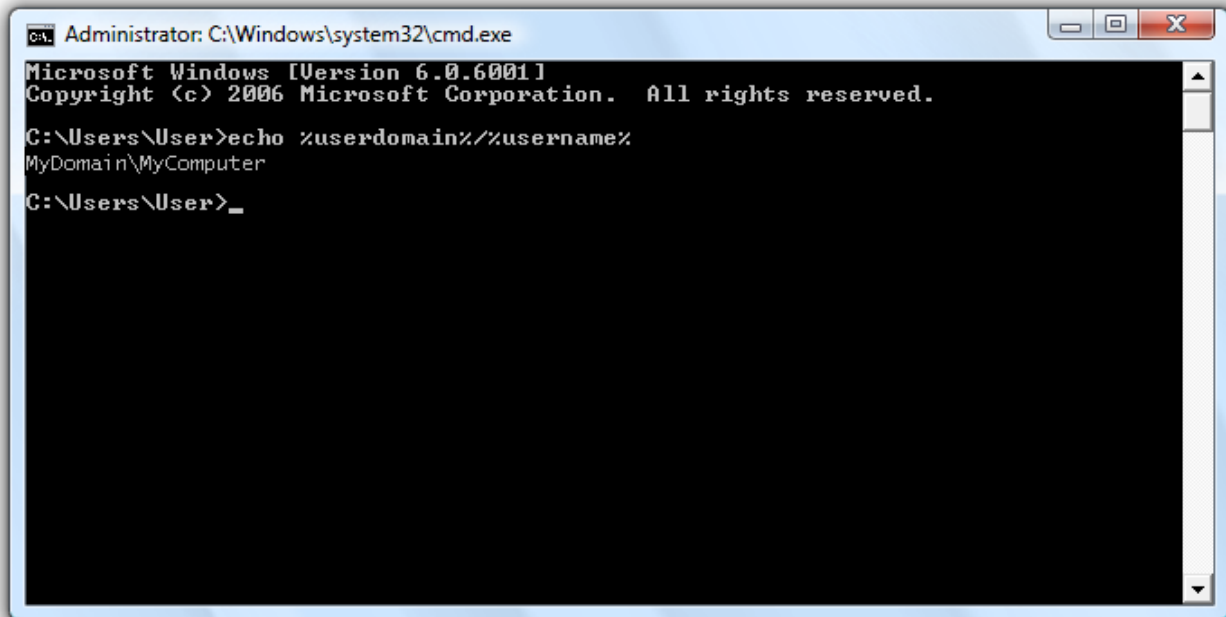
- Call the command line under **Run...** in the Start menu. Enter the command `cmd` in the dialog.

Frequently asked questions



Call the command line

Enter the command: `echo %userdomain%\%username%` into the command line and confirm your entry with Enter. If your computer is not signed on to a domain, your computer name will appear instead of the domain name.



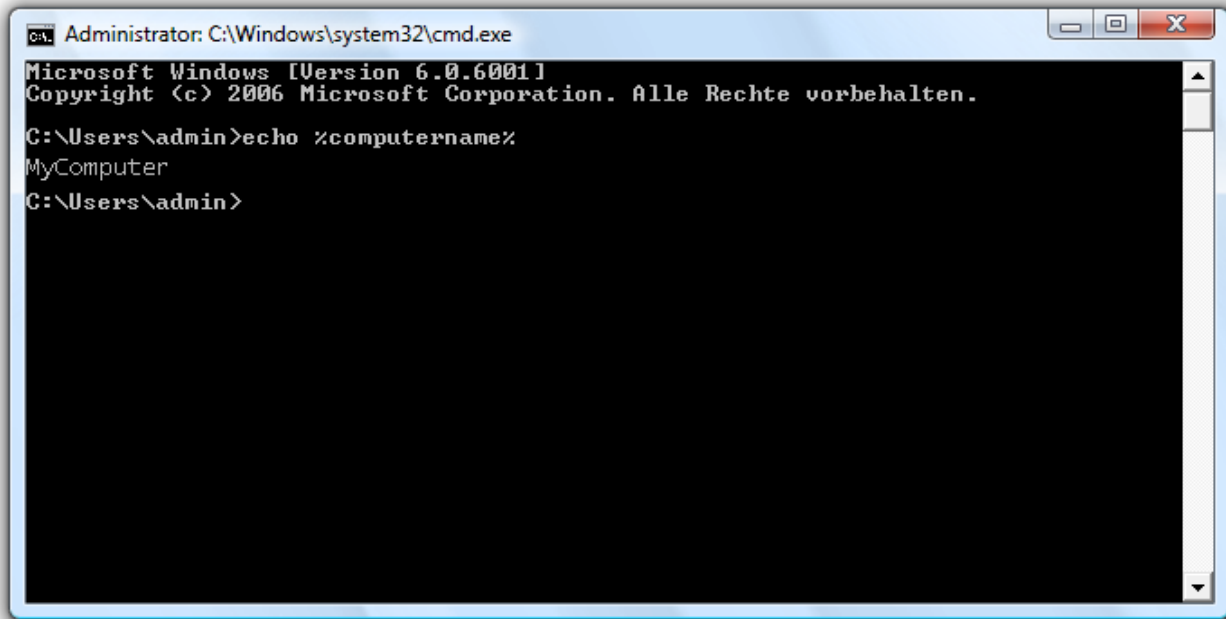
Call the user name in the command name.

Where do I find the computer name, from which I can run activities?

If you are not sure, please proceed as follows:

- Call the command line by typing `cmd` in the start menu under Run.
- Enter the command: `echo %computername%` and confirm your entry with Enter.

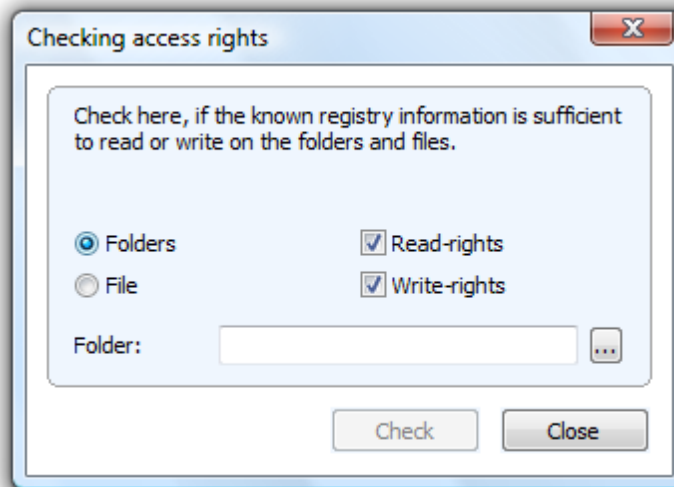
Frequently asked questions



Call the computer name in the command name.

How can I check my access rights on the target computer or the target folder?

If you are not sure if your entries are correct, you can view them under **Program settings/Security** and recheck them.



Checking access rights in O&O DiskImage

Or you can your access rights on the target computer under Properties in the corresponding target folder under "Security".

Frequently asked questions

- Click in the context menu of the folder on **Properties** and then on **Security**. All user will be listed that have access to the folders.

Behavior when receiving error notices

Various error notices may appear while working with O&O DiskImage. These can either be displayed in dialogs or seen in reports.

Error notice	Description
IDS_ERROR_LOGON_FAILURE Registration has failed on account of invalid user name or authentication information.	User name and/or password is false. Where required, consult your system administrator.
IDS_ERROR_ACCOUNT_RESTRICTION The authentication information entered is valid but restrictions on the user account have prevented a successful authentication.	Change the settings of the respective user account. It's possible that there is a restriction such as "read only" enabled there.
IDS_ERROR_INVALID_LOGON_HOURS The user account is subject to time limitations and is therefore not available for registration at this time.	Maximum login time has expired. Please login again.
IDS_ERROR_PASSWORD_EXPIRED The password for the user account has expired.	Your password has expired. Please enter a new password.
IDS_ERROR_ACCOUNT_DISABLED The account referred to is currently disabled and cannot be accessed for registration.	User account was disabled. When applicable, consult your system administrator.
IDS_ERROR_ACCOUNT_LOCKED_OUT The user account has been automatically blocked because too many invalid registration attempts have been made.	User account was blocked. When applicable, consult your system administrator.

Internal error codes

The internal error code (individually designed error code) is the last digit in the error code after the last period.

Frequently asked questions

Error notice	Description
0x385	Invalid job or script.
0x387	Unsupported task or incorrectly written job / script
0x388	Parameter is false or is not supported by the task.
0x38A	An obligatory parameter is missing.
0x70	Invalid or damaged installation.
0x7D1	Unknown Host
0x7D2	Invalid Host Port
0x6A6	Invalid password file
x6A9	Invalid keyword in parameter (registry)
0x6AA	No password file registered
0x6AA	A target folder is missing in the password file.

Windows errors / Microsoft error definitions (primary value)

Error notice	Description
C0000240	Prompting was canceled
C0000022	Access denied: process requires access to an object to which access is being denied.
C0000033	Object (path/file) is invalid, e.g. is especially marked.
C0000034	Object (path/file) not found
C0000035	Same object (path/file) already exists.

Support and Contact

To receive more information about O&O DiskImage, please visit our website, <http://www.oo-software.com> and get the latest information about product developments and support. Also included on our web site are regularly updated FAQs and knowledge bases that address the most common problems and questions regarding our products.

All registered customers receive installation support, free of charge, for the first 30 days after registration. When contacting our support team, please do not forget to have your registration code available.

In addition, it may be helpful to read the frequently asked questions (FAQ) section of our website before contacting our support team. It is always possible that your specific question or problem may have already been addressed.

O&O Software

Address: Am Borsigturm 48
13507 Berlin
Germany

Telephone: +49(0)30 4303 4303

Fax: +49(0)30 4303 4399

Web: <http://www.oo-software.com>

E-Mail: support@oo-software.de

sales@oo-software.de

Authorized resellers

Our authorized reseller partners in over 30 countries stand ready to assist you with answers to all questions regarding the licensing and purchase of our software products. Their names and addresses may be found on our website, under the heading "Partner – Find Resellers". We would also be more than happy to assist you in finding the partner closest to you.

End user license agreement 2.1 (EULA)

O&O Software

General and Specialized Section

General Section

IMPORTANT – PLEASE READ CAREFULLY

This End User License Agreement (EULA) is organized into 2 sections: a general part, which is valid for all O&O products, and a specialized part, which includes the particular terms of each corresponding product. By accepting both parts of the license terms they automatically form part of your contract with O&O Software, Am Borsigturm 48, 13507 Berlin. If you have any questions regarding this contract and the license terms, our Service Team is available to help you under info@oo-software.com.

The software product is protected by copyright laws and international copyright contracts as well as other laws and agreements concerning intellectual property.

1. Object and form of delivery

(1) You receive the software covered by the contract in executable form (Binary code) together with the relevant documentation released by O&O according to Section (6).

(2) The software provides the range of functions described in the given documentation. The documentation regarding functionality may be consulted prior to concluding the contract in the internet presentation on the following site <http://www.oo-software.com/>.

(3) Delivery will be made according to the way in which you have purchased the software, either by having a disk directly handed over or sent by mail to an address you have supplied or through the forwarding of license as well as any required download information to a given E-mail address.

(4) If you are currently receiving updates as part of a maintenance agreement, these will continue to be supplied in the same way as the initial software delivery, i.e., for a disk sent by mail, a disk containing the update will be sent to the given address: for electronically delivered keys, a key for downloading updates will be sent to the given E-mail address.

(5) Changes to the delivery or E-mail address can only be taken into consideration when they are supplied in writing or by E-mail to the address or E-mail address indicated on <http://www.oo-software.com> at least two weeks before delivery of the update.

(6) A printed copy of the documentation will not be included in delivery. The documentation consists primarily of electronic aids.

2. Voraussetzungen des Einsatzes (Systemvoraussetzungen)

(1) Installation of the software is not part of the agreement.

(2) Depending on the software, there are certain system requirements that must be met in order to use the software according to the terms of this contract. These will be defined according to each product in the specialized section of this contract.

3. Rights of use, including test versions, unauthorized transfer, and application

End user license agreement 2.1 (EULA)

- (1) O&O grants you, upon payment of the agreed one-time fee, a permanent, spatially unlimited and non-exclusive right to use the software.
- (2) Test versions – if you have installed a test version of one of our products taken from the O&O Website <http://www.oo-software.com/>, the right of use will be, according to the program, for a limited time only and/or technically restricted.
- (3) One copy of the software is entitled to be used on a maximum of one (1) output device/workstation simultaneously.
- (4) If you want to use the software on more than one output device/workstation, the rights of use must be extended accordingly. To find out which O&O products are also available as volume licenses, please consult (<http://www.oo-software.com/>). The separate price list concerning O&O Volume Licenses will apply to extending the rights of use without redelivery.
- (5) Any use beyond that agreed upon in the contract is one in violation of the contract. In such a case, you are required to report this use that exceeds the rights of use to the supplier without any delay. The parties will then try to bring about an agreement for extending the rights of use. For the duration of the excessive usage, i.e., until the conclusion of such an agreement or the cessation of the excessive usage, you are required to pay compensation for this excessive usage according to the amount indicated in our price lists. The amount of compensation will be calculated on the basis of a four year, straight-line depreciation. If we are not informed of the excessive usage, a contract penalty in the amount three times the price of the usage indicated in the price list will be due O&O.
- (6) You are entitled to create a backup copy of the software and to conduct ordinary data backups. The creation of more copies than the amount needed for the backing up of any future usage (including the backup copies and data backups) is not allowed.
- (7) Copyrights and other trademarks within the software may not be altered or removed. They must be transferred onto every copy of the software.
- (8) Unauthorized transfer – only when you have purchased the software with an accompanying disk are you permitted to transfer it and then, only under the following conditions: a resale of the software is only permitted when it involves an entire software copy, i.e., by surrendering your own usage of the purchased copy, you are entitled to transfer these rights of use of the disk onto a third party according to the terms of the agreement existing between you and O&O. When making such a transfer, you are required to hand over to the third party all materials related to the software that are covered in the contract and to delete the software from any storage volumes (e.g., hard disks) remaining in your possession.
- (9) Unauthorized rental and service – The purchase of this contract does not entitle you to any public transfer or rental of the software. You are also not entitled to include the software as part of your providing services for and in the presence of any third parties. You may purchase an appropriate license from O&O for doing this.

4.Payment

- (1) The prices are given with the corresponding sales taxes included, unless otherwise indicated.
- (2) Test versions – Downloads of test versions offered by O&O are provided free of charge, unless otherwise indicated.
- (3) If you receive updates of your programs as part of a Maintenance Agreement, the terms of payment in these contracts will apply to these Maintenance Agreements.
- (4) O&O is entitled to forward any data it has received onto third parties requiring it for purposes of collection.

(5) Until payment is made in full, O&O retains possession of all rights, particularly those concerning copyrighted rights of use, on the materials included in this contract. O&O is specifically entitled to cancel a contract, for example, when your payment is delayed, it prohibits the further using of the software and demands the surrendering of all copies or this being impossible, to demand their deletion. Should a third party have access to the object of purchase before payment is completed for the contractual software, you are required to inform this third party about the object being the property of O&O and to inform O&O, in writing, about the third party's access.

5. Material defect and defect of title

(1) The software package or download you receive is free of any material defect or defect of title.

(2) A material defect exists when the software is unable to be used as described in the documentation appearing on the website and included in delivery or available for downloading.

O&O is constantly checking to make sure that other sources are not misrepresenting the functions and properties of the software as described in the documentation. You can therefore assume that any descriptions beyond those found in the software documentation have not originated with O&O and are also unknown to it. Please inform O&O if you learn of any software descriptions that include functions and properties not mentioned in the documentation.

(3) Please inform O&O if you learn of any software descriptions that include functions and properties not mentioned in the documentation.

(4) Any claims concerning defects of material and/or title related to the software have a limitation period of two years subsequent to delivery of the program or transmission of the serial number needed for downloading. If you are not a private individual, the warranty period is shortened to one year.

If O&O has fraudulently concealed a material defect, a three year limitation period will cover claims related to this defect.

Payment for compensation that you might have been entitled to as a result of cancellation or an abatement can be refused upon expiration of the limitation period.

(5) You are required to inform O&O, in writing if possible, of any defects that arise immediately upon their discovery. While doing so you should also describe, as well as possible, how the defect is communicated, the effect it has on the program, and under which circumstances it occurs.

(6) Should defects be reported to O&O within the limitation period, it will undertake a cure free of charge.

(7) As part of the cure, the corrected software will be redelivered as agreed. An on-site analysis and correction of the error on your system will not take place.

O&O assumes the ensuing expenses for the cure, in particular the costs for transport, labor, and material. You are personally responsible for installation. O&O specifically does not assume on-site installation as part of its obligation with regard to defects of material or title.

Should a change of the program be required as part of the cure, O&O will make the necessary changes in the documentation without any charges.

(8) After the unsuccessful expiration of a deadline you set for cure, you can cancel the contract or reduce the purchase price and demand compensation instead of service or the replacement of any futile expenditures.

(9) A deadline is not required when

- a) O&O refuses both kinds of cure, even if it is entitled to do so as a result of the arising expenses or
- b) the cure is impossible or
- c) the cure is unacceptable to you or
- d) the cure is unsuccessful.

A subsequent improvement is considered a failure after the second unsuccessful attempt unless there is something particular about the type of software or the defect itself or the surrounding circumstances that would indicate otherwise.

(10) You are not entitled to cancel the contract if the defect is negligible, nor may you, in this event, demand compensation instead of full service.

(11) In the event of cancellation, compensation is due for any uses made. The compensation for use will be based on a four year, straight-line depreciation of the purchase price.

(12) As a result of the abatement, the purchase price will be reduced by the amount which is calculated for deducting the defect from the value of the software. The standard used will be its value at the time the contract was concluded. The amount, when necessary, is to be calculated by estimation. As a result of this reduction, any amount larger than that paid for the reduced purchase price will be refunded.

If it turns out that a reported problem did not arise as a result of a defect in the software and if you can be accused of malice or gross negligence, then O&O is entitled to invoice you for: 1) services; 2) the expenses for analysis and; 3) correction of the problem, according to the amount stated in the price list.

(14) The seller's warranty is canceled when changes are made on the software without expressed written consent or when the software is not used as intended or used in an improper software environment, unless you can prove that these facts had nothing to do with the problems that occurred.

6.Limitation of compensation

(1) O&O is liable for compensation for every legal ground to the extent described in the following provisions.

(2) The extent of liability of O&O for damages caused by malice or gross negligence arising from O&O itself or one of its vicarious or legal agents is unlimited.

(3) There is no limit to the extent of liability of O&O or any of its legal or vicarious agents for damages involving injury to life, physical well-being or health, or for simple breach of duty.

(4) There is unlimited liability for damages caused by serious organizational fault on the part of O&O as well as for damages arising from a missing guaranteed characteristic.

(5) For the breach of an essential contractual duty, O&O is liable for damages normally foreseen in a contract when none of the instances in provisions (2) – (4) applies.

(6) Any further liability for compensation is excluded, specifically excluded is liability without fault.

(7) Liability as defined by the product liability law remains untouched.

(8) If damage can be traced to have arisen through a fault on the part of O&O as well as on the part of yourself, you must have your share of the fault evaluated.

You are responsible for making a standard backup of your data at least once a day. For data loss caused by O&O, O&O is only liable for the expense of duplicating the data on your backup copies that need to be created and for the restoration of data which would have also been lost during a standard backup procedure.

7. Final provisions

- (1) You may only balance claims from O&O with indisputable or legally valid claims.
- (2) Changes and amendments to this contract must be made in writing. This also applies to changes to this provision.
- (3) The contract is subject to German law. The uniform UN purchasing law (CISG) as well as the UNIDROIT Factoring Agreement of Ottawa do not apply.
- (4) Any general terms and conditions on your part will not be applied.

In the event you are not a private individual or a resident of the Federal Republic of Germany, we agree that the district court in Berlin will be the competent court for litigation arising from this contract.

8. Kontakt

If you have any questions concerning the O&O Software License Agreement or wish to speak with O&O, please get in touch with us.

O&O Software GmbH, Am Borsigturm 48, 13507 Berlin, Germany.

Telephone: +49 (0)30 4303 4303, Fax: +49 (0)30 4303 4399

E-Mail info@oo-software.com / sales@oo-software.com, Web www.oo-software.com

Special section

O&O BlueCon

Important note on the Windows PE Start CD

The Microsoft® Windows™ Preinstallation Environment contained in this hardware or this software may only be used for starting, diagnosing, setup, restoration, installation, configuration, testing or disaster recovery.

NOTE: THIS SOFTWARE CONTAINS A SECURITY FEATURE THAT WILL CAUSE END USER'S SYSTEM TO REBOOT WITHOUT PRIOR NOTIFICATION TO THE END USER AFTER 72 HOURS OF CONTINUOUS USE.

Amendment to: 2. Requirements for application (system requirements)

The software requires the Windows 2000 (all Editions), Windows Server 2003 (all Editions), Windows XP (all Editions), Windows Vista (all Editions) or Windows Server 2008 (all Editions) operating systems. Usage within the terms of this contract is not achieved without the application of these operating systems.

The product at hand can only be employed according to the acquired license. The following license types exist for O&O BlueCon:

O&O BlueCon Admin Edition

End user license agreement 2.1 (EULA)

You are authorized to install and use the software product on all computers a) in the possession of the company (legal person or natural person(s) in the case of corporations) owning the license and b) all located at a single site. This license is bound to a single natural person and is non-transferable.

O&O BlueCon Tech Edition

You are authorized to install and use the software product on all computers. This includes computers that do not belong to the company owning the license (also known as Service Technician's License). This license is bound to a single natural person and is non-transferable.

O&O CleverCache

Amendment to: 2. Requirements for application (system requirements)

O&O CleverCache Professional Edition

The software requires the Windows XP (all Editions), Windows Vista (all Editions) or Windows 7 (all editions) operating systems. Usage within the terms of this contract is not achieved without the application of these operating systems.

O&O CleverCache Server Edition

The software requires Windows Server 2003 (all Editions), Windows XP (all Editions), Windows Vista (all Editions), Windows Server 2008 (all Editions), Windows 7 (all Editions) or Windows Server 2008 R2 (all Editions) operating systems. Usage within the terms of this contract is not achieved without the application of these operating systems.

O&O Defrag

Amendment to: 2. Requirements for application (system requirements)

O&O Defrag Professional Edition

The software requires the Windows 2000 Professional, Windows XP (all Editions), Windows Vista (all Editions) or Windows 7 (all editions) operating systems. Usage within the terms of this contract is not achieved without the application of these operating systems. Control of the program through a network management is not possible.

O&O Defrag Workstation Edition

The software requires the Windows 2000 Professional, Windows XP (all Editions), Windows Vista (all Editions) or Windows 7 (all editions) operating systems. Usage within the terms of this contract is not achieved without the application of these operating systems. The O&O Defrag Workstation Edition may be used on computers with or without the user interface. You are entitled to control this program over the separately obtainable network manager.

O&O Defrag Server Edition

The software requires Windows 2000 (all Editions), Windows Server 2003 (all Editions), Windows XP (all Editions), Windows Vista (all Editions), Windows Server 2008 (all Editions), Windows 7 (all Editions) or Windows Server 2008 R2 (all Editions) operating systems. Usage within the terms of this contract is not achieved without the application of these operating systems. The O&O Defrag Server Edition may be used on computers with or without the user interface. You are entitled to control this program over the separately obtainable network manager.

O&O DiskImage

Important note on the Windows PE Start CD

End user license agreement 2.1 (EULA)

This note is only valid for the O&O DiskImage Professional and the Server Edition Start CD. The Microsoft® Windows™ Preinstallation Environment (Windows PE) is not a part of O&O DiskImage Express and the Workstation Edition!

The Microsoft® Windows™ Preinstallation Environment contained in this hardware or this software may only be used for starting, diagnosing, setup, restoration, installation, configuration, testing or disaster recovery.

NOTE: THIS SOFTWARE CONTAINS A SECURITY FEATURE THAT WILL CAUSE END USER'S SYSTEM TO REBOOT WITHOUT PRIOR NOTIFICATION TO THE END USER AFTER 72 HOURS OF CONTINUOUS USE.

Amendment to: 2. Requirements for application (system requirements)

O&O DiskImage Express Edition

The software requires the Windows 2000 Professional, Windows XP (all Editions), Windows Vista (all Editions) or Windows 7 (all editions) operating systems. Usage within the terms of this contract is not achieved without the application of these operating systems. Control of the program through a network management is not possible.

O&O DiskImage Professional Edition und Special Edition

The software requires the Windows 2000 Professional, Windows XP (all Editions), Windows Vista (all Editions) or Windows 7 (all editions) operating systems. Usage within the terms of this contract is not achieved without the application of these operating systems. Control of the program through a network management is not possible.

O&O DiskImage Workstation Edition

The software requires the Windows 2000 Professional, Windows XP (all Editions), Windows Vista (all Editions) or Windows 7 (all editions) operating systems. Usage within the terms of this contract is not achieved without the application of these operating systems. The O&O DiskImage Workstation Edition may be used on computers with or without the user interface. You are entitled to control this program over the separately obtainable network manager.

O&O DiskImage Server Edition

The software requires Windows 2000 (all Editions), Windows Server 2003 (all Editions), Windows XP (all Editions), Windows Vista (all Editions), Windows Server 2008 (all Editions), Windows 7 (all Editions) or Windows Server 2008 R2 (all Editions) operating systems. Usage within the terms of this contract is not achieved without the application of these operating systems. The O&O DiskImage Server Edition may be used on computers with or without the user interface. You are entitled to control this program over the separately obtainable network manager.

Amendment to: 3. Rights of use, including test versions, unauthorized transfer, and application

Creation and restoration of images

The source computer and each target computer are required to hold licenses, to create and restore images using O&O DiskImage. One license is sufficient under the previously mentioned terms, if the source and the target computer is one non-virtual workstation. Each virtual machine is seen as an independent computer; in other words, each virtual machine needs its own license.

O&O DiskRecovery

Amendment to: 2. Requirements for application (system requirements)

End user license agreement 2.1 (EULA)

The software requires Windows 2000 (all Editions), Windows Server 2003 (all Editions), Windows XP (all Editions), Windows Vista (all Editions), Windows Server 2008 (all Editions), Windows 7 (all Editions) or Windows Server 2008 R2 (all Editions) operating systems. Usage within the terms of this contract is not achieved without the application of these operating systems.

The product at hand can only be employed according to the acquired license. The following license types exist for O&O DiskRecovery:

O&O DiskRecovery Personal Edition

You are authorized to install and use the software product on only one computer. Other limitations may apply in the software itself. Please consult the software documentation for more information on these limitations.

O&O DiskRecovery Admin Edition

You are authorized to install and use the software product on all computers

a) in the possession of the company (legal person or natural person(s) in the case of corporations) owning the license and b) all located at a single site. This license is bound to a single natural person and is non-transferable.

O&O DiskRecovery Tech Edition

You are authorized to install and use the software product on all computers. This includes computers that do not belong to the company owning the license (also known as Service Technician's License). This license is bound to a single natural person and is non-transferable.

O&O DiskStat

Amendment to: 2. Requirements for application (system requirements)

O&O DiskStat Professional Edition

The software requires the Windows 2000 Professional, Windows XP (all Editions), Windows Vista (all Editions) or Windows 7 (all editions) operating systems. Usage within the terms of this contract is not achieved without the application of these operating systems.

O&O DiskStat Workstation Edition

The software requires the Windows 2000 Professional, Windows XP (all Editions), Windows Vista (all Editions) or Windows 7 (all editions) operating systems. Usage within the terms of this contract is not achieved without the application of these operating systems. The O&O DiskStat Workstation Edition may be used on computers with or without the user interface. You are entitled to control this program over the separately obtainable network manager.

O&O DiskStat Server Edition

The software requires Windows 2000 (all Editions), Windows Server 2003 (all Editions), Windows XP (all Editions), Windows Vista (all Editions), Windows Server 2008 (all Editions), Windows 7 (all Editions) or Windows Server 2008 R2 (all Editions) operating systems. Usage within the terms of this contract is not achieved without the application of these operating systems.

O&O DriveLED

Amendment to: 2. Requirements for application (system requirements)

End user license agreement 2.1 (EULA)

The software requires Windows 2000 (all Editions), Windows Server 2003 (all Editions), Windows XP (all Editions), Windows Vista (all Editions), Windows Server 2008 (all Editions), Windows 7 (all Editions) or Windows Server 2008 R2 (all Editions) operating systems. Usage within the terms of this contract is not achieved without the application of these operating systems.

O&O Enterprise Management Console

Important note on the Microsoft SQL Server

This product uses the Microsoft SQL Server or Microsoft SQL Server Express Edition. To the extent that these programs are part of the installation of this product, the terms of their licensing related to the use of this software will also apply to the terms of this agreement.

The use of Microsoft SQL Server Express Edition is free of charge in conjunction with this product. The purchase of licenses for O&O Enterprise Management Console and related products is separate from any possible purchase of SQL Server products.

Amendment to: 2. Requirements for application (system requirements)

The software requires Windows 2000 (all Editions), Windows Server 2003 (all Editions), Windows XP (all Editions), Windows Vista (all Editions), Windows Server 2008 (all Editions), Windows 7 (all Editions) or Windows Server 2008 R2 (all Editions) operating systems. Usage within the terms of this contract is not achieved without the application of these operating systems.

O&O FormatRecovery

Amendment to: 2. Requirements for application (system requirements)

The software requires the Windows 2000 (all Editions), Windows Server 2003 (all Editions), Windows XP (all Editions), Windows Vista (all Editions) or Windows Server 2008 (all Editions) operating systems. Usage within the terms of this contract is not achieved without the application of these operating systems.

The product at hand can only be employed according to the acquired license. The following license types exist for O&O

FormatRecovery:

O&O FormatRecovery Personal Edition

You are authorized to install and use the software product on only one computer. Other limitations may apply in the software itself. Please consult the software documentation for more information on these limitations.

O&O FormatRecovery Admin Edition

You are authorized to install and use the software product on all computers a) in the possession of the company (legal person or natural person(s) in the case of corporations) owning the license and b) all located at a single site. This license is bound to a single natural person and is non-transferable.

O&O FormatRecovery Tech Edition

You are authorized to install and use the software product on all computers. This includes computers that do not belong to the company owning the license (also known as Service Technician's License). This license is bound to a single natural person and is non-transferable.

O&O ISOBoot

Important note on the use of O&O ISOBoot

The program overwrites the target data volume (these include among other things rewritable CDs or USB sticks). Please make sure that no data you need is left on the target data volume. Overwriting data cannot be reversed!

O&O formally declares that it is not responsible for damages arising from the improper use of O&O ISOBoot.

Amendment to: 2. Requirements for application (system requirements)

Die Software setzt das Betriebssystem Windows 2000 (alle Editionen), Windows Server 2003 (alle Editionen), Windows XP (alle Editionen), Windows Vista (alle Editionen), Windows 7 (alle Editionen) oder Windows Server 2008 (alle Editionen) voraus. Usage within the terms of this contract is not achieved without the application of these operating systems.

Amendment to: 4. Payment

O&O demands no fee for the use of O&O ISOBoot. In addition, a fee for this license and this program may not be demanded by any Third Parties, unless this is done with the expressed approval of O&O. When in doubt, please get in touch with us.

O&O MediaRecovery

Amendment to: 2. Requirements for application (system requirements)

The software requires the Windows 2000 (all Editions), Windows Server 2003 (all Editions), Windows XP (all Editions), Windows Vista (all Editions) or Windows Server 2008 (all Editions) operating systems. Usage within the terms of this contract is not achieved without the application of these operating systems.

O&O PartitionManager

Important note on the Windows PE Start CD

The Microsoft® Windows™ Preinstallation Environment contained in this hardware or this software may only be used for starting, diagnosing, setup, restoration, installation, configuration, testing or disaster recovery.

NOTE: THIS SOFTWARE CONTAINS A SECURITY FEATURE THAT WILL CAUSE END USER'S SYSTEM TO REBOOT WITHOUT PRIOR NOTIFICATION TO THE END USER AFTER 72 HOURS OF CONTINUOUS USE.

Amendment to: 2. Requirements for application (system requirements)

O&O PartitionManager Professional Edition

The software requires the Windows 2000 Professional, Windows XP (all Editions), Windows Vista (all Editions) or Windows 7 (all editions) operating systems. Usage within the terms of this contract is not achieved without the application of these operating systems.

O&O RegEditor

Important note for working with the Microsoft Windows Registry

End user license agreement 2.1 (EULA)

Before making changes to the Microsoft Windows Registry (in the following Registry), you should prepare a backup copy of the Registry and ensure that you'll be able to restore the Registry if a problem should arise.

O&O formally declares that it is not responsible for damages arising from the improper use of O&O RegEdit. Changes to the Registry should only be made by experienced users who are aware of the consequences of such changes. A defective Registry can influence the entire stability of the system and lead to a crash of the computer or make it unable to start. This can further lead to loss of data.

Amendment to: 2. Requirements for application (system requirements)

The software requires the Windows 2000 (all Editions), Windows Server 2003 (all Editions), Windows XP (all Editions), Windows Vista (all Editions) or Windows Server 2008 (all Editions) operating systems. Usage within the terms of this contract is not achieved without the application of these operating systems.

Amendment to: 4. Payment

O&O demands no fee for the use of this license. In addition, a fee for this license and this program may not be demanded by any Third Parties, unless this is done with the expressed approval of O&O. When in doubt, please get in touch with us.

O&O RescueBox

Important note on the Windows PE Start CD

The Microsoft® Windows™ Preinstallation Environment contained in this hardware or this software may only be used for starting, diagnosing, setup, restoration, installation, configuration, testing or disaster recovery.

NOTE: THIS SOFTWARE CONTAINS A SECURITY FEATURE THAT WILL CAUSE END USER'S SYSTEM TO REBOOT WITHOUT PRIOR NOTIFICATION TO THE END USER AFTER 72 HOURS OF CONTINUOUS USE.

Amendment to: 2. Requirements for application (system requirements)

The software requires the Windows 2000 (all Editions), Windows Server 2003 (all Editions), Windows XP (all Editions), Windows Vista (all Editions) or Windows Server 2008 (all Editions) operating systems. Usage within the terms of this contract is not achieved without the application of these operating systems.

The product at hand can only be employed according to the acquired license. The following license types exist for O&O RescueBox:

O&O RescueBox Personal Edition

You are authorized to install and use the software product on only one computer. Other limitations may apply in the software itself. Please consult the software documentation for more information on these limitations.

O&O RescueBox Admin Edition

You are authorized to install and use the software product on all computers a) in the possession of the company (legal person or natural person(s) in the case of corporations) owning the license and b) all located at a single site. This license is bound to a single natural person and is non-transferable.

O&O RescueBox Tech Edition

End user license agreement 2.1 (EULA)

You are authorized to install and use the software product on all computers. This includes computers that do not belong to the company owning the license (also known as Service Technician's License). This license is bound to a single natural person and is non-transferable.

O&O SafeErase

Amendment to: 2. Requirements for application (system requirements)

The software requires Windows 2000 (all Editions), Windows Server 2003 (all Editions), Windows XP (all Editions), Windows Vista (all Editions), Windows Server 2008 (all Editions), Windows 7 (all Editions) or Windows Server 2008 R2 (all Editions) operating systems. Usage within the terms of this contract is not achieved without the application of these operating systems.

O&O UnErase

Amendment to: 2. Requirements for application (system requirements)

The software requires Windows Server 2003 (all Editions), Windows XP (all Editions), Windows Vista (all Editions), Windows Server 2008 (all Editions), Windows 7 (all Editions) or Windows Server 2008 R2 (all Editions) operating systems. Usage within the terms of this contract is not achieved without the application of these operating systems.

The product at hand can only be employed according to the acquired license. The following license types exist for O&O UnErase:

O&O UnErase Personal Edition

You are authorized to install and use the software product on only one computer. Other limitations may apply in the software itself. Please consult the software documentation for more information on these limitations.

O&O UnErase Admin Edition

You are authorized to install and use the software product on all computers a) in the possession of the company (legal person or natural person(s) in the case of corporations) owning the license and b) all located at a single site. This license is bound to a single natural person and is non-transferable.

O&O UnErase Tech Edition

You are authorized to install and use the software product on all computers. This includes computers that do not belong to the company owning the license (also known as Service Technician's License). This license is bound to a single natural person and is non-transferable.