

 **O&O PartitionManager 2**
Professional Edition

O&O PartitionManager
Rev. 2008-10-20

© 2006-2008
O&O Software GmbH • Am Borsigturm 48 • 13507 Berlin • Germany

Text, illustrations and examples have been produced with great care. The editor is neither legally nor in any other way liable for incorrect information given and its possible consequences.

This document is protected by copyright. All rights reserved. Without written approval no part of this document may be reproduced through photocopying, microfilming or any other procedure, nor may it be translated into a language used by machines, especially data-processing plants. Rights are likewise reserved for quotation in lectures, on radio and television.

Microsoft, Windows, Windows NT, Windows 2000, Windows XP, Windows Vista and Windows 2003 are registered trademarks of Microsoft Corporation, Redmond, USA. O&O and the O&O-logo are registered trademarks of the O&O Software GmbH, Berlin

Table of Contents

| | |
|---|-----------|
| About O&O PartitionManager | 1 |
| Introduction | 1 |
| Important Features at a Glance | 1 |
| Installation and System Requirements | 2 |
| System Requirements | 2 |
| Installation | 2 |
| Entering the license | 2 |
| Note about Licensing | 3 |
| Completing registration | 3 |
| Updates of O&O PartitionManager | 4 |
| Using the test version | 4 |
| Uninstallation | 4 |
| Getting Started | 5 |
| Introduction | 5 |
| Tips and important instructions | 6 |
| General information about disk management | 6 |
| Basic Disks | 6 |
| Dynamic Disks | 6 |
| GPT Disks | 7 |
| Convert to Dynamic Disk | 7 |
| Convert to GPT Disk | 7 |
| Convert to MBR Disk | 7 |
| Identify new disks | 8 |
| Format drives | 8 |
| Create a primary partition out of a new drive | 9 |
| Create an extended partition | 10 |
| Create a logical drive | 10 |
| Create a new simple volume | 10 |
| Create a new spanned volume | 10 |
| Create a new striped volume | 11 |
| Create a new mirrored volume | 11 |
| Create a new RAID 5 volume | 12 |
| Mirror drive | 12 |
| Rename drive and change paths | 13 |
| Advanced Functions | 14 |
| Delete drive | 14 |
| Delete the contents of a drive securely | 14 |
| Delete drive securely | 14 |
| Delete free disk space securely | 15 |
| Change the size of a drive | 16 |
| Increase drive | 16 |

| | |
|--|-----------|
| Shrink drive | 16 |
| Moving a drive | 17 |
| Rename a drive | 17 |
| Show properties | 18 |
| Using the Start CD | 19 |
| Introduction | 19 |
| Starting O&O PartitionManager under Windows PE | 19 |
| Load drivers | 20 |
| Examples of Application | 21 |
| Example 1 | 21 |
| Example 2 | 22 |
| Example 3 | 22 |
| Support and Contact | 23 |
| Online-Registration | 24 |

About O&O PartitionManager

Introduction

Thank you for deciding to purchase O&O PartitionManager! O&O PartitionManager is similar in design to the familiar Windows DiskManager, but provides a number of advanced options such as changing the size of a drive, or moving it from one place to another. What makes it even more unique is the integration of O&O SafeErase, our multiple award winning tool for deleting data securely. This is something that comes in very handy when you no longer need a certain partition and wish to free the space it's taking up on the disk.

O&O PartitionManager is also a component of O&O BlueCon, our all-around solution when it comes to repairing damaged systems or restoring lost data. You can learn more about it on the product pages of our website.

We wish you lots of fun and success working with O&O PartitionManager! We will be very happy to answer all your questions about this and any other of our products.

O&O Software GmbH

Important:

There is a risk, in the event a job cannot be run successfully, that data saved on the respective drives could be partially, or even totally lost. To be on the safe side, we suggest you create an image of the original drives before using the O&O PartitionManager: a tool like O&O DiskImage is ideal for this purpose.

Note:

Please take into account that the printed version of the handbook might slightly differ from the Online Help due to ongoing program updates.

Important Features at a Glance

- Creates, deletes, enlarges and shrinks partitions
- One of a kind of support of all volume types from Vista to Windows*
- Includes leading technologies of O&O Defrag and O&O SafeErase
- Start CD is based on O&O BlueCon**
- Supports Vista and Windows XP (32-bit/64-bit)

Installation and System Requirements

System Requirements

- Intel® Pentium™ III or comparable processor
- For the Start CD at least 512 MB RAM (1 GB recommended)
- 10 MB free hard disk space
- VGA graphics card with minimum 800x600 and 256 colors
- CD/DVD drive, Keyboard and Mouse
- Windows™ 2000 Pro, XP, and Vista® all Editions (starting from Windows™ XP 32-bit/64-bit Support respectively)
- Windows File System FAT12/FAT16/FAT32/NTFS4/NTFS5
- Microsoft Internet Explorer 5.5 or a higher version is required to display the Online Help

Permissions

You must be a member of a local administrator group, or possess comparable permissions, in order to install and register O&O PartitionManager. As a domain administrator, you normally possess such permissions.

Installation

The installation of O&O PartitionManager is very easy. Please proceed as follows:

1. Start the computer on which you wish to install O&O PartitionManager.
2. Logon as local administrator or as an user with comparable permissions.
3. Start the O&O PartitionManager installation file which you have either downloaded from our server or have on your CD-ROM.
4. After the setup program has been successfully initialized, please follow the installation dialogue.
5. When prompted, restart your computer.

Entering the license

Note:

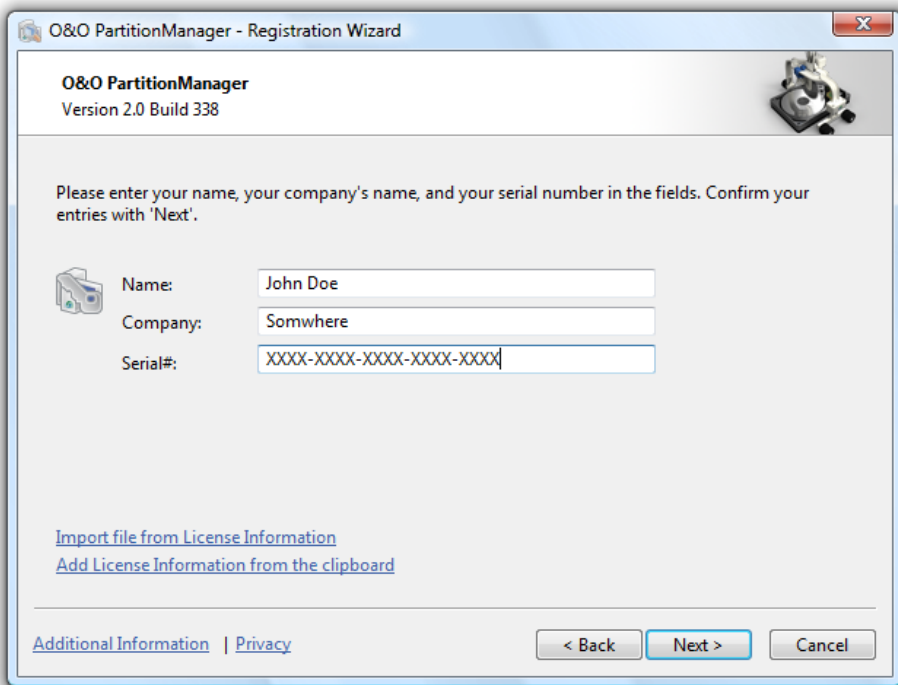
In order to activate the product after installation or to gain access to the Full Version at a later time, you must possess a valid license key. This license key is also called a registration code, serial number, or product ID. If you do not enter a valid license key, you can still use O&O PartitionManager as a fully functional trial version for up to a maximum of 30 days. Should you have any questions, please contact our Support Team.

The dialogue for registration always appears automatically at the start to guide you if you are using an unregistered version, or have entered the registration code incorrectly.

The Registration Wizard allows for a simple registration process. When you select the option **Enter Registration Code**, a dialog box will appear where you can enter the registration code you received when purchasing the software. Please make sure that you do not confuse the digit "1" with "l" or enter any empty spaces where they don't belong.

Press **Next** to save the registration data or **Cancel** to leave the dialog window without saving the data.

Should you run into any problems when entering your registration code, please contact our Support Team.



O&O PartitionManager - Registration Wizard

O&O PartitionManager
Version 2.0 Build 338

Please enter your name, your company's name, and your serial number in the fields. Confirm your entries with 'Next'.

Name:

Company:

Serial#:

[Import file from License Information](#)
[Add License Information from the clipboard](#)

[Additional Information](#) | [Privacy](#)

Registration Wizard: Enter registration code

Note about Licensing

You can test O&O PartitionManager for 30 days free of charge and with no obligation. The remaining trial period will be displayed each time you start the program.

If you would like to implement O&O in your company or as a technician for your customers, then please contact one of our resellers or our Sales Department.

Completing registration

When you have correctly entered the license code you will receive confirmation in the dialog window. You can now register online and benefit from many advantages such as technical support and free upgrades. To do so, simply click on **Register Product Online!** To close the wizard simply click on Close.

Updates of O&O PartitionManager

If you want to update O&O PartitionManager to a newer version, you'll need the license key. Please follow the following directions:

1. First uninstall the previous version of O&O PartitionManager.
2. Start the Installation O&O PartitionManager.
3. Complete the O&O PartitionManager installation in the normal way.
4. Once finished, the new version is fully installed.

Using the test version

You can test O&O PartitionManager without any commitments and for free for up to 30 days. The remaining days of the trial period are displayed whenever you start the program. The trial version is not restricted – all program functions are fully operational. You should, you should keep in mind that applications such as shrinking or deleting a system partition can only be performed with the O&O PartitionManager Start CD, which you will receive whenever you buy the product.

Uninstallation

To remove O&O PartitionManager from your PC, please follow the following instructions:

1. Open the Control Panel in the Windows start menu and select Add or Remove Programs.
2. Please select O&O PartitionManager from the list of installed software and then click the **Add/Remove** button.
3. Confirm the uninstallation of O&O Partition Manager. Once uninstallation is complete, you will receive a message of confirmation and you must restart your computer.

Getting Started

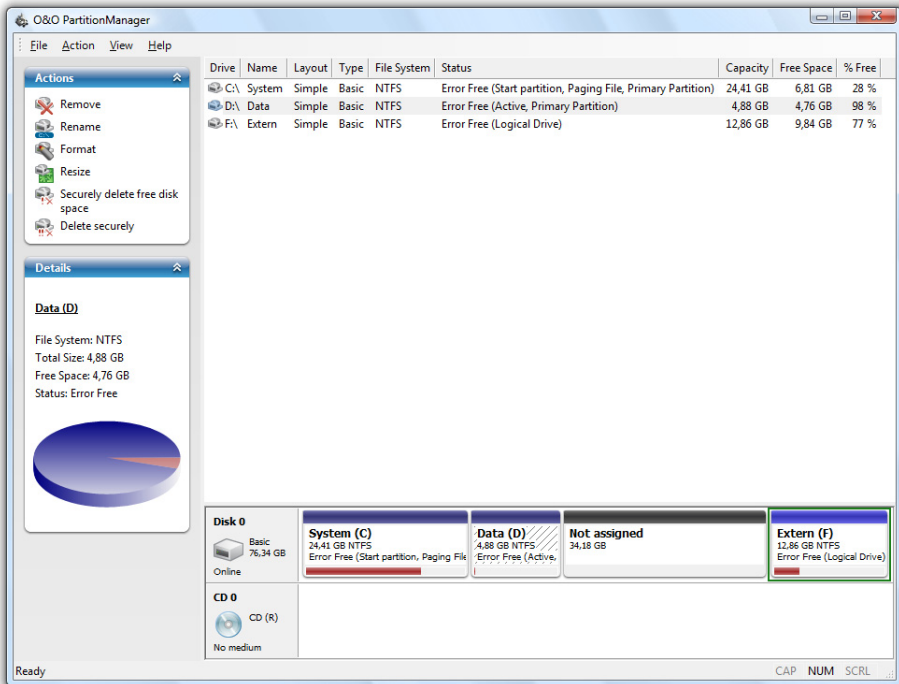
Introduction

The following chapters will give you a broad view of the program functions available on O&O PartitionManager. Many functions on it have been designed in a way similar to the Windows Disk Manager. Beyond that, however, O&O PartitionManager has a number of useful functions that will make it even easier for you to manage your hard disk.

You can start O&O PartitionManager by following the corresponding desktop shortcut or under **Start/Programs/O&O Software/O&O PartitionManager**. The Online Help will open, if you click **Help** or press **F1**.

Note:

Please take into account that the printed version of the handbook might slightly differ from the Online Help due to ongoing program updates.



Welcome page of O&O PartitionManager

Tips and important instructions

Important:

Create an image of your data! Before using O&O PartitionManager, it's a good idea to create an image of your hard disk's contents with the help of special software like O&O DiskImage. This is important because in the process of deleting, creating or extending the partition of a volume, existing data could, under certain conditions, be permanently destroyed. Even if you're not intending to change individual partitions or volumes, you should still create an image of important data or your entire hard disk, before you begin using O&O PartitionManager.

Note:

You must be a member of a local administrator group or possess comparable permissions in order to work with O&O PartitionManager on a local computer.

Note:

Deleting the system partition with O&O PartitionManager is only possible by using the Start CD from and under Windows PE.

General information about disk management

O&O PartitionManager will allow you to create and convert ("change") various types of disks.

Note:

The original disk must be empty in order for it to be changed into another disk type.

Basic Disks

A basic disk is a physical disk, e.g., a hard disk. It's possible to create up to four primary partitions on a basic disk, or three primary partitions and one extended partition with any number of logical drives.

O&O PartitionManager will let you change a basic disk into

- a GPT Disk or
- a dynamic disk.

Dynamic Disks

A dynamic disk is a physical disk, e.g., a hard disk, which is so formatted that it's also able to support dynamic volumes. Dynamic volumes can be sprawled over a number of disks.

Dynamic disks from new or unknown hard disk will initially be displayed as unallocated spaces. With help the help of O&O PartitionManager, you can import them so that they will be displayed as dynamic disks. A dynamic disk can be changed into

- a basic disk or
- a GPT Disk.

 **Note:**

Certain problems may arise when trying to import disks of various Windows Versions, e.g., W2K and XP. This is why you should only import disks of the same Windows Version.

GPT-Disk

A GPT disk (GUID Partition Table) can be changed into

- A basic disk or
- A dynamic disk

Convert to Dynamic Disk

You can change a basic disk into a dynamic disk. Dynamic disks make it possible to create volumes that extend over a number of disks. All volumes present on dynamic disks are labeled as dynamic volumes.

You can select the function **Convert to Dynamic Disk** by right-clicking the disk, or under the program setting **Action**.

 **Note:**

A disk may only be changed into a dynamic disk when the original disk contains no partitions or volumes.

Convert to GPT Disk

You can change dynamic disks into a GPT disk (GUID Partition Table). A GPT disk is the same as an MBR basic disk, except that a GPT disk can have up to 128 partitions created on without the need for an extended partition. You can change a disk into a GPT Disk by selecting **Convert to GPT Disk** when you right-click the disk, or by clicking under **Action**.

 **Note:**

A disk can only be changed into a GPT Disk when the original disk contains no partitions or volumes.

Convert to MBR Disk

You can change dynamic disks and GPT disks into an MBR (Master Boot Record) disks.

You can select the function **Convert to MBR Disk** by right-clicking the disk, or under the program setting **Action**.

 **Note:**

A disk can only be changed into an MBR disk when the original disk contains no partitions or volumes.


Identify new disks

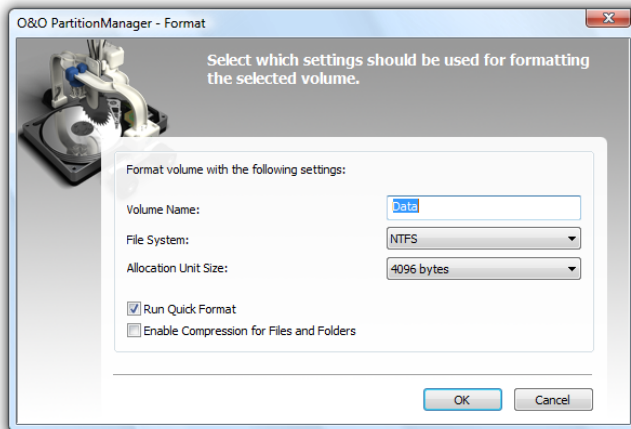
Should newly connected disks, e.g., USB Sticks, internal and external hard disks, not be displayed, under Action select Search for New Devices to refresh the view of disk?

-  **Note:**
Restart your computer if the new disk is not identified.
-  **Note:**
New disks will be added to your computer as basic disks by default.
-  **Note:**
Dynamic disks of new or unknown hard disks will first be displayed as unallocated spaces. With help the help of O&O PartitionManager, you can import them so that they will be displayed as dynamic disks.

Format drives

You can format a selected drive, partition, or a volume by right-clicking the corresponding object, or by clicking under **Jobs**. Formatting will delete all existing data in the object and also create a file system on the drive, which will later permit you to save data on it.

-  **Note:**
Any data on the drive you want to format will be lost as a result of the formatting. To be on the safe side, create an image of this data before formatting, using a program like O&O DiskImage.



Format drive

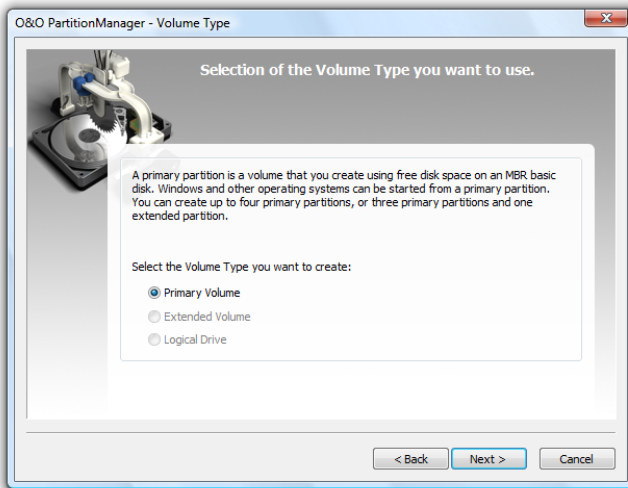
Create a primary partition out of a new drive

You can change unallocated spaces of the hard disk(s) /basic disk(s) into a new primary partition. A primary partition functions just like a separate disk: it can be used for installing an operating system.

 **Note:**

It's possible to create up to four primary partitions on a basic disk, or three primary partitions and one extended partition with any number of logical drives.

1. To create a primary partition, right-click the unallocated space and then click **New Partition**, or under **Action** in the menu bar.
2. Follow the questions in the dialogue and in the dialogue **Select Volume Type**, click **Primary Partition**.
3. In the next step you should specify properties such as drive letters and size of the partition.
4. You can then format the drive immediately (recommended) or at a later moment, the initialization will follow automatically.
5. After confirmation, the new RAID 5 volume will be displayed graphically.



Create a primary partition

Create an extended partition

An extended partition can only be created on an MBR disk and may contain one or more logical drives. Extended partitions are useful for creating more than four partitions on an MBR disk.

You can create an extended partition in an unallocated space of the hard disk.

1. To create an extended partition, right-click the unallocated space then click **New**
2. Follow the questions in the dialogue and in the dialogue **Select Volume Type**, click **Extended Partition**.
3. In the next step you should specify properties such as the size of the partition.
4. After confirmation, the extended partition will be displayed graphically as "free space".

Create a logical drive

A logical drive can only be created on an extended partition. Logical drives perform the same function as primary partitions, but cannot be used for booting the operating system.

1. To create a new logical drive, right-click the extended partition then click **New Partition**, or click under **Action**.
2. Follow the questions in the dialogue and in the dialogue **Select Volume Type** click **Logical Drive**.
3. In the next step you should specify properties such as drive letters and size of the partition.
4. You can then format the drive immediately (recommended) or at a later moment, the initialization will follow automatically.
5. After confirmation, the logical drive will be displayed graphically.

Create a new simple volume

A new simple volume can only be created on an unallocated space of a dynamic disk.

1. To create a new simple volume, right-click the unallocated space then click **New Simple Volume**, or click under **Action**.
2. In the next step you should specify properties such as drive letters and size of the partition.
3. You can then format the drive immediately (recommended) or at a later moment, the initialization will follow automatically.
4. After confirmation, the new simple volume will be displayed graphically.

Create a new spanned volume

A spanned volume is a partition that's shared by at least two disks. A spanned volume can only be created on dynamic disks. A minimum of two disks, e.g., hard disks, are required for doing this.

Note:

This function is not supported by Windows XP Home.

1. To create a new spanned volume, right-click the unallocated space of a dynamic disk and click **New Spanned Volume**, or click under **Action**.
2. In the next step you should select the disks you want to use and add them to the selection. You must select at least two disks.
3. You can also select the size of the individual parts. In the selection, mark the corresponding disk in the list and specify the size you desire.
4. You can then select the drive letters.
5. You can then format the drive immediately (recommended), the initialization will follow automatically.
6. After confirmation, the new spanned volume will be displayed graphically.

Create a new striped volume

A stripe set volume can only be created on dynamic disks. In order to do this there must be at least two disks, e.g., hard disks, available. A stripe set volume saves data alternately in stripes on selected disks. As this involves simultaneously contacting ever more (at least two) disks, the load will be divided, which means data can be written and read faster with a stripe set volume than with a simple or spanned one.

 **Note:**

This function is not supported by Windows XP Home.

1. To create a new stripe set volume, right-click the unallocated space of a dynamic disk and select **New Striped Volume**, or by clicking under **Action**.
2. In the next step you should select the disks you want to use and add them to the selection. You must select at least two dynamic disks.
3. You can also specify the size of each part. The size of each part will always remain identical.
4. You can then select the drive letters.
5. You can then format the drive immediately (recommended), the initialization will follow automatically.
6. After confirmation, the new striped volume will be displayed graphically.

Create a new mirrored volume

A mirrored volume can only be created on dynamic disks. A minimum of two disks, e.g., hard disks, are required for doing this.

 **Note:**

A mirrored volume can only be created under Windows Server 2000, 2003 or 2008 (all Editions).

Unlike stripe set volumes, identical data will be written onto the disks of a mirrored volume. The data will therefore be “mirrored” from one disk, e.g., hard disk, to another. This provides you with a “backup copy”, just in case one disk is defective.

1. To create a new mirrored volume, right-click the unallocated space of the dynamic disk and select **New Mirrored Volume**, or click under **Action**.
2. In the next step you should select the disks you want to use and add them to the selection. You must select at least two dynamic disks.
3. You can also specify the size of each part. The size of each part will always remain identical to the other.
4. You can then assign the drive letters.
5. You can then format the drive immediately (recommended), the initialization will follow automatically.
6. After confirmation, the new mirrored volume will be displayed graphically.

Create a new RAID 5 volume

A RAID 5 volume can only be created on a dynamic disk. At least three (and a maximum of 32) dynamic disks are required for doing this.

Note:

A RAID 5 volume can only be created under Windows Server 2000, 2003 or 2008 (all Editions).

A RAID 5 volume is a mixture of payload and data redundancy. This makes a RAID 5 volume very fault-tolerant. If you create, for example, a RAID 5 volume using three dynamic disks of 10GB each, the entire volume will have a capacity of 20 GB. The remaining disk space will be used for storing backup data (parity). RAID 5 volumes cannot be extended or mirrored.

1. To create a new RAID 5 volume, right-click the unallocated space of the dynamic disk and click **New RAID 5 Volume**, or click under **Action**.
2. In the next step you should select the disks you want to use and add them to the selection. You must select at least three dynamic disks.
3. You can also specify the size of each part. The size of each part will always remain identical to the other.
4. You can then select the drive letters.
5. You can then immediately format the drive (recommended), the initialization will follow automatically.
6. After confirmation, the new RAID 5 volume will be displayed graphically.

Mirror drive

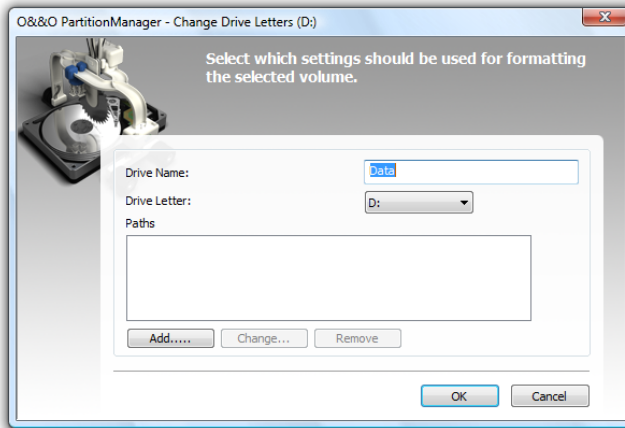
You can create a mirror out of a simple volume. The data on it will then be copied onto another drive. Every change that is made to the original drive will automatically be made to the mirror.

1. To create a mirror, right-click the original drive and click **Mirror** or **Add Mirror**, or click under **Action**.
2. In the next step you should select the disk where the mirror should be saved.
3. After confirmation, the mirroring process will be run.

Rename drive and change paths

If you want to change the drive letters, right-click the drive then click **Change Drive Letter and Paths** and enable your settings in the dialogue window.

Paths can also be assigned instead of drive letters. Just like a shortcut, the created partition will then be displayed in the new folder (only with NTFS).



Change the name of the volume

Advanced Functions

Delete drive

You can delete an existing drive by either right-clicking it, or clicking under Action. This will result in both the drive and all data on it being permanently lost.

 **Note:**

When you delete a drive securely, the drive will be permanently deleted. To be on the safe side, before deleting, create an image of your data drive with special software like O&O DiskImage.

 **Note:**

Deleting the system partition with O&O PartitionManager is only possible by using the Start CD from and under Windows PE.

Delete the contents of a drive securely

When you delete data, they are no longer visible to the system. Your data, however, are still present on your hard disk. To be sure that your data are permanently deleted, right-click the drive and select the function **Delete content securely**. This is something you should really do in the event you want to give your computer away or sell it.

 **Note:**

When you delete the contents of a drive securely, all data on it are destroyed. This data will then be securely deleted using the technology of O&O SafeErase. At this point, not even special data recovery software will be able to restore them. To be on the safe side, before deleting, create an image of your data drive with special software like O&O DiskImage.

 **Note:**

Deleting the system partition with O&O PartitionManager is only possible by using the Start CD from and under Windows PE.

Delete drive securely

When you delete a drive, its space will once again be labeled as free space on the hard disk. Your data are still present on the hard disk, but they are no longer visible to the system. To be absolutely certain your data are permanently deleted, right-click the drive and click **Delete Disk Securely**. This is something you should really do in the event you want to give your computer away or sell it.

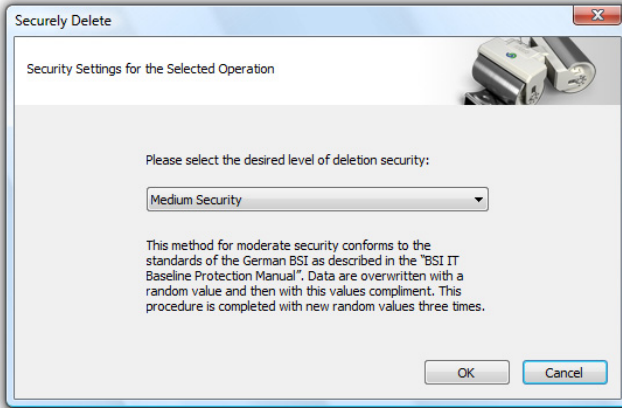
 **Note:**

When you delete a drive securely, the drive will be permanently deleted with the technology of O&O SafeErase and all data on it can never be recovered. At this point, not

even special data recovery software will be able to restore them. To be on the safe side, before deleting, create an image of your data drive with special software like O&O DiskImage.

Note:

Deleting the system partition with O&O PartitionManager is only possible by using the Start CD from and under Windows PE.



Set degree of safety for deleting

Delete free disk space securely

Deleted doesn't always mean deleted. Even when you delete data from the Windows Recycle Bin, it is still present on your hard disk. It's just it is no longer being "read" by the system. Once you use **Delete Free Disk Space Securely** on any space of the hard disk, all data that has ever been stored there will be permanently destroyed.

Deleting can be done by right-clicking a partition, an unallocated space, or a free space and then clicking **Delete Free Disk Space Securely**. Not even special data recovery software will be able to restore any data from these free spaces.

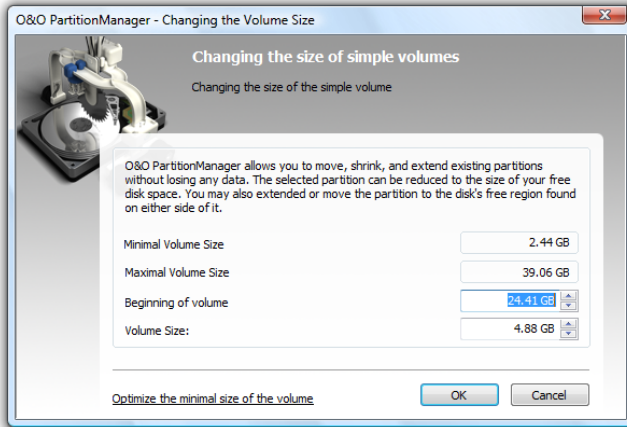
Note:

Once you delete free disk space, all data that has ever been stored there will be permanently deleted using the technology of O&O SafeErase. Not even special data recovery software will be able to restore any data from these free spaces. Creating a forensic image with O&O DiskImage is one sure way of doing this.

Change the size of a drive

 **Note:**

Enlarging or shrinking the system partition is only possible with O&O PartitionManager when using the Start-CD and under Windows PE.



Change the size of a drive

Extending a drive

 **Note:**

If the job is not successfully run, there is a risk that data saved on the drive will be partially or fully lost. To be on the safe side, before increasing the size of a drive, create an image of the original drive with O&O DiskImage.

- Right-click the drive or click under Action and then click Change Size. You should then adjust the size of the drive in the dialogue window.

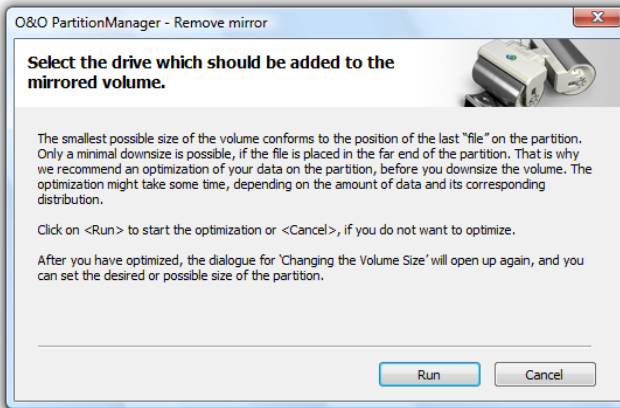
Shrinking a drive

You can shrink a volume down to its free space or even until its last physical file. You can also find free space in between files in some volumes (so called holes), which cannot be used while decreasing in size. These holes can be closed if you optimize the volume. We therefore recommend optimizing your volume before shrinking it. As a result, all files will be reorganized and saved back to back. In other words, your files will physically be moved forward, and the distance of the last file to the end of the volume will have increased. Consequently, the volume can then be shrunk to the maximum. Optimizing is based on the technology of our multiple award-winning defragmentation program, O&O Defrag.

Note:

If the shrink job cannot be performed successfully, there is a risk that the data saved on the volume might be lost partially or even fully. To be on the safe side, create a disk image of your original volume with for example O&O DiskImage, before reducing the drive.

1. Right-click the drive or click under **Action** and then click **Change Size**.
2. We recommend choosing the option **Optimize Minimum Size of Volume**, before shrinking your volume. Optimizing can take some time, depending on the size of the volume.
3. After optimizing, the dialogue to shrink the volume is displayed anew. Please enter your desired size in the selection screen.
4. You have to delete data on your volume to have more free storage space, if the space is not sufficient, even after optimizing.



Optimization dialogue

Moving drive

Note:

If the job cannot be successfully run, there is a risk that data saved on the drive will be partially or entirely lost. To be on the safe side, make an image of the original drive before you move any drive. A product like O&O DiskImage is perfect for doing this.

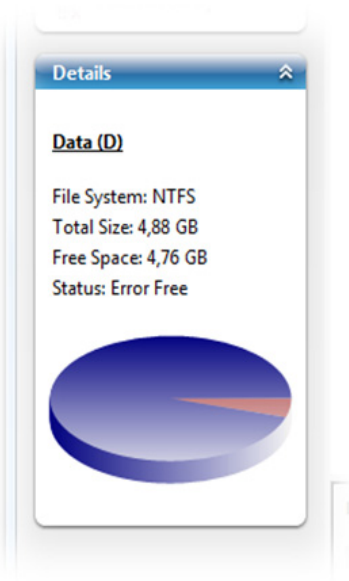
- Right-click the drive or under **Actions** click **Change Size** and then under **Volume Begin** adjust the dimensions of the volume to fit the hard disk.
- Keep in mind that you can only move the drive in the direction of the free disk space that is still available on the hard disk.

Rename a drive

By right-clicking the selected drive, you can use **Change Drive Letter and Paths**, to give the drive another name.

Show properties

When you click the graphical display of a drive, you'll be able to get pertinent information about it in the **Details** window.



Drive information

Using the Start CD

Introduction

Thanks to the Start CD - the only one of its kind in the entire world - being able to run its very own mini-operating system based on Windows PE, you'll be able to use O&O Partition Manager without having to rely on your own Windows operating system. The Windows driver contained in Windows PE is a guarantee that you will always have access to your hardware. There'll also be no problem if an important driver is missing because O&O DriverLoader will be able to load it for you. Having Windows PE as its foundation gives O&O PartitionManager unlimited possibilities to help you make changes in your hard disk configurations.

Starting O&O PartitionManager under Windows PE

Make sure that your system is able to be started from a CD. You can place the appropriate settings in BIOS. Further information can be obtained from your motherboard manufacturer.

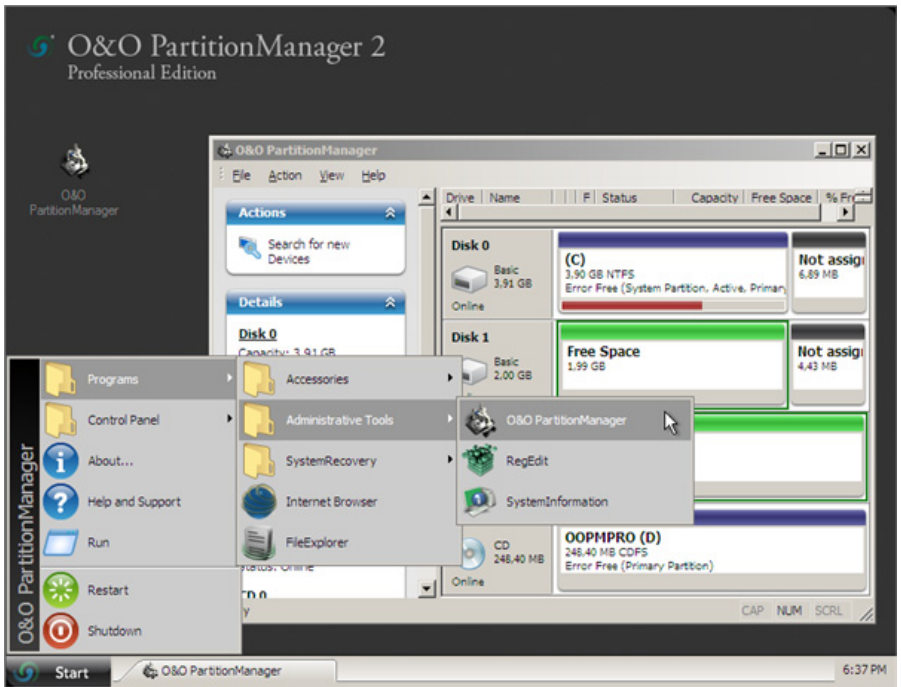
1. Enter the Start CD in your computer's CD/DVD drive.
2. Restart the computer.
3. To run O&O PartitionManager, follow the instructions for starting the CD. This procedure can take a few minutes. At this stage is the Network Initialized. If a network connection cannot be initialized, it means your network card is not supported.
4. The system settings will subsequently appear in the window. Use the menu feature **System** for selecting your target system. This selection is particularly important when several operating systems are installed on the computer. If no system is displayed, the selection will default to Windows PE.
5. You can then select language, time, country, keyboard layout, and driver.

O&O PartitionManager will be started after confirming the license agreements, and the welcoming page of O&O PartitionManager under Windows PE is displayed.

- Start O&O PartitionManager under **Start/Administration/O&O PartitionManager**

Note:

O&O PartitionManager does not support encrypted drives!



Execute O&O PartitionManager from the Start-CD (under Windows PE)

Load drivers

Before starting O&O PartitionManager, it's possible to install hard disk controller drivers to make sure the program will be able to detect all connected hard disks. This also applies to drivers for network cards.

Under **Drivers** in the system settings, you can load drivers for those devices still unable to be found under PE.

Note:

Under certain circumstances you may receive a message requiring you to restart if you have loaded an additional driver under Windows PE. This message is automatically generated by Windows PE but is irrelevant when starting from a CD. Simply decline the request and follow the further instructions in the pop-up window.

Examples of Application

Example 1

Dividing a large partition into a number of smaller ones

There are various ways of dividing a large partition into a number of smaller ones, according to the size and amount of data allocation.

Important:

If the application is unsuccessful, there is a risk that your data will be either partially or fully lost. That's why you should backup all the original partition's data onto a removable medium or another partition.

Option 1: Shrinking the partition to the minimal size (based on the amount of data), and using the area that's now free for creating the desired number of partitions.

1. Right-click the selected partition and then click **Change Size**. In the dialogue box, go to **Volume Size** and set the minimal size. The space you now have available will be subsequently displayed in the view of the disk.
2. By right-clicking the free space you can create a new partition and adjust the size to make sure you'll have enough space for any further partitions you may want to create. In the dialogue you can also perform additional functions such as selecting the type of drive or assigning drive letters.
3. The new partition will be created after you've confirmed your selections. You will then be able to create the next partition in the same way.

Option 2: When your partition is almost full, create an image of your data on either a removable medium or another partition. You can then delete the original partition and split it afterwards into the number of partitions you desire. Once you've finished doing this, you can divide your imaged data among the newly created partitions.

1. Create an image of your data from the large partition and save it on a removable medium or another partition.
2. Delete the original partition by right-clicking the selected partition and then clicking **Delete Partition**. It will then be labeled as an unallocated space.
3. After you right-click, select **New Partition** and adjust the size to make sure you'll have enough space for any additional partitions you might want. In the dialogue, you'll also be able to perform additional functions such as assigning drive letters or the type of drive.
4. The new partition will be created after you've confirmed your selections. You will then be able to create the next partition in the same way.

Example 2

Change several small partitions into one large one.

1. First copy all the data onto one drive so that all the remaining drives are empty. If one drive doesn't have enough room for storing all the data, save the data on something like a removable medium for the duration.
2. Delete the empty partitions by right-clicking each one and then selecting **Delete Partition**. They will then be labeled as an unallocated space.
3. Right-click the drive where you have copied all the data and then select **Change Size**.
4. In the dialogue you'll then be able to select and confirm the size you desire.

 **Note:**

The free space must be located directly behind the drive whose size you want to increase, otherwise, you will not be able to increase it.

Example 3

Delete Free Disk Space Securely

Deleted doesn't always mean deleted. Even when you delete data from the Windows Recycle Bin, it is still present on your hard disk. It's just that it is no longer being "read" by the system. Once you use **Delete Free Disk Space Securely** on any space of the hard disk, all data that has ever been stored there will be permanently destroyed.

Deleting can be done by right-clicking a partition, an unallocated space, or a free space and then clicking Delete Free Disk Space Securely.

Not even special data recovery software will be able to restore any data from these free spaces.

 **Note:**

Once you delete free disk space, all data that has ever been stored there will be permanently deleted using technology of O&O SafeErase. Not even special data recovery software will be able to restore any data from these free spaces. To be on the safe side, you should create an image of your data drive before permanently deleting it. Creating a forensic image with O&O DiskImage is one sure way of doing this.

Support and Contact

Technical Support

To receive more information about O&O PartitionManager, please visit our website, www.oo-software.com, and get the latest information about product developments and support. Also included on our website are regularly updated FAQs and Knowledge Bases that address the most common problems and questions regarding our products.

All registered customers receive installation and product support, free of charge, for the first 90 days after registration. When contacting our Support Team, please remember to have your registration code available.

In addition, it may be helpful to read the Frequently Asked Questions (FAQ) section of our website before contacting our Support Team. It is always possible that your specific problem may have already been addressed.

Authorized Resellers

Our authorized reseller partners in over 30 countries stand ready to assist you with answers to all questions regarding the licensing and purchase of our software products. Their names and addresses may be found on our website, under the heading "Partner – Find Resellers". We would also be more than happy to assist you in finding the partner closest to you.

O&O Software GmbH

Am Borsigturm 48
13507 Berlin
Germany

Tel +49 (0)30 4303 4303

Fax +49 (0)30 4303 4399

E-mail sales@oo-software.com

support@oo-software.com

Web www.oo-software.com

Online-Registration

Register online

In order to register an O&O Product online, you'll need the registration code that you received at the time you purchased your product. This registration code is also called a license key, a serial number or product ID.

If you'd like to register, start the O&O program. The questions related to online registration always appear at the start, provided you haven't registered online.

What are the advantages of online registration at O&O?

Online registration gives you the benefit of having your customer data kept safely on our files, which means we can provide you with even better service. This comes in very handy if, for example, you're unable to find the access code to your product. With online registration, a new one can be issued quickly and easily. The access code is needed for making Updates or reinstalling the O&O programs on your computer, if it ever needs to be set-up again.

Further advantages will let you:

Be supplied with the latest information about our products

- Make free updates on new versions of purchased items (minor updates)
- Upgrade to a new version at a special discount price (major update)
- Obtain support from our Customer Service
- And much, much more...

How does online registration work?

If your O&O program was purchased on our Online Shop, you've automatically registered with us. If it was purchased through a Dealer, you'll be asked during installment if you'd like to register. You then have the option of either registering immediately or at another time. All you'll need is a functioning Internet connection and a valid license key.

You may also complete the registration form right here:

www.oo-software.com/register

Just return the completed online form by clicking "Send" and you'll be eligible to take full advantage of our O&O Customer Service.