



Copyrights

Text, illustrations and examples have been produced with great care. The editor is neither legally nor in any other way liable for incorrect information given and its possible consequences.

This document is protected by copyright. All rights reserved. Without written approval no part of this document may be reproduced through photocopying, microfilming or any other procedure, nor may it be translated into a language used by machines, especially data-processing plants. Rights are likewise reserved for quotation in lectures, on radio and television.

Microsoft, Windows 2000, Windows XP, Windows Vista, Windows 7, Windows 2003, Windows 2008 and Windows 2008 R2 are registered trademarks of the Microsoft Corp., Redmond, WA, USA. O&O and the O&O-logo are registered trademarks of the O&O Software GmbH, Berlin.

Rev. 8/9/201010:21 AM

©1997 -2010 O&O Software GmbH • Am Borsigturm 48 • 13507 Berlin • Germany

<http://www.oo-software.com>

Contents

About O&O RescueBox 14	1
Features at a glance.....	1
System requirements	3
Installation of the individual products	4
Enter license.....	4
Online registration	5
What are the advantages of online registration?.....	5
How do I register online?.....	6
Start directly without operating System	7
Load drivers.....	8
Getting started with O&O DiskRecovery	10
Selection of search process.....	11
Getting Started with O&O DiskImage	14
One-click imaging - Create an image of the entire computer.....	15
Differential/incremental imaging.....	16
Restore drives.....	16
Getting Started with O&O PartitionManager	17
Change the size of a drive.....	17
Change the size of a partition.....	18
Move a partition.....	19
Change the size of a volume.....	19
Optimize the size to a minimum.....	21
Support and Contact	23
Authorized Resellers.....	23
Endbenutzer-Lizenzvertrag 2.7 (EULA)	24

About O&O RescueBox 14

We appreciate your trust and will gladly introduce you to the O&O RescueBox.

You know this scenario: data loss or even system crashes seem to occur then, when you need your computer the most. Just before a term paper deadline, while filing taxes or when compiling pictures and videos for the next presentation. The O&O RescueBox supports you in all emergencies which your computer can bring you in and includes the best O&O programs for rescuing and securing data and for managing your hard disks. You can install your programs individually or run them directly from CD, even if Windows is not running properly or cannot be started at all. The operation is partly assisted so you won't need much time getting used to the program. All components are perfected, tested and licensed by us:

- **O&O DiskRecovery 6 Personal Edition**
Can locate deleted data even if the disk shows signs of software errors. A maximum of 1000 files can be restored per run.
- **O&O DiskImage 5 Professional Edition**
Imaging and restoration of data, forensic imagings for the rescuing data, to lessen the strain on the original disk.
- **O&O PartitionManager 3 Professional Edition**
Easy hard disk management, to simplify data rescue and organisation.
- **Additional O&O programs**
for example a simpler file browser, a Registry Editor and Internet browser

The following chapters explain, how you can apply the O&O RescueBox optimally and helps you getting started.

We hope that you will benefit from O&O RescueBox and that it will simplify your work with the computer. Should you have any questions or suggestions about either our products or licensing, please get in touch with us. We will be very happy to help you further.

Yours O&O Software

www.oo-software.com

Note: Each product included has access to a separate program help, which you can find as PDF on the O&O RescueBox CD, or in the corresponding program via the help function, or by pressing the F1 key.

Features at a glance

The O&O RescueBox includes the best O&O programs for rescuing and securing data, and for managing your hard disks. The programs can be installed individually or run directly from CD, even if Windows is not running as it should or does not boot up anymore. The Windows driver contained in Windows PE is a guarantee that you will always have access to your hardware.

O&O DiskRecovery 6 Personal Edition

O&O DiskRecovery looks for and reconstructs data deleted accidentally or due to software errors. O&O DiskRecovery checks each sector of the hard disk, of the memory card, or the USB sticks for lost files. Rescuing data

with O&O DiskRecovery saves valuable time, which the re-entry of the data - if at all possible - might cost you. 2 additional integrated search algorithms, know through our renowned highly awarded test winner O&O UnErase and O&O FormatRecovery, you can now search for lost data even more thorough with O&O MediaRecovery.

O&O DiskImage 5 Professional Edition

With O&O DiskImage you can create professional images of complete systems or individual drives. After imaging you will not have to fear data loss anymore. Your old data will quickly be available again: Simply restore your image and your computer will be just as it was. There's no longer any need for a time consuming set-up of operating systems and applications. Even in the case of a total crash or a computer infected with malware we can help you thanks to the Start CD. Simply boot O&O DiskImage from CD and restore the last system image - done! From O&O DiskImage 5 on, it is even possible to run a restoration on a computer with different hardware (Machine Independent Restoration).

O&O PartitionManager 3 Professional Edition

The O&O PartitionManager offers you the possibility to subdivide your hard disk into partitions, to move these and to change their size. Besides recognizing MBR disks, it also recognizes and supports dynamical disk, disks with a GPT layout, as well as removable storage mediums, USB sticks and memory cards. If you run the O&O PartitionManager directly from CD, you can extend or shrink your system partition, which is not possible while Windows is running.

Additional O&O programs

- **O&O FileExplorer:** Is a simple file browser. If your system is damaged, you have practically no chance of accessing your files to back them up. O&O FileExplorer enables you to navigate through your computers entire file system.
- **O&O RegEdit:** Offers complete access on the Windows registration databank. The settings for numerous Windows applications, drivers and services are saved here. A special feature of O&O RegEditor is the direct navigation over the address line. This enables you to navigate quickly to certain keys.
- **O&O SRP-Manager:** If your target system is Windows XP, you can reset your computer to an earlier state. SRPs enable you to revert back to previously saved system configuration, even when the system is damaged or Windows will not start.
- **O&O CheckDisk:** Runs an exhaustive check of the file system and the storage medium interface and by doing so protects them against possible loss of data.
- **O&O Notepad:** A basic text editor that allows you to view, edit and save text files. Files in ASCII and Unicode may be edited using O&O Notepad.
- **Webbrowser:** The integrated FireFox® Web browser enables you to access the Internet.

System requirements

- The system requirement of each operating system have to be fulfilled
- 150 MB free hard disk space
- Supports 32 and 64-bit operating systems
- Windows® 7, Vista, XP oder 2000 (alle Editionen)

Note: For booting with the Start CD at least 1GB RAM is necessary.

Permissions

You need to be a member of a local administrator group or hold comparable permissions, to install and register individual O&O Programme. Domain administrators normally already possess these permissions.

Installation of the individual products

Please insert the O&O RescueBox CD in your CD/DVD drive, for the installation of the individual O&O products. The CD should boot up automatically. You will find further information on the O&O products included, their corresponding installation files, detailed hand books as PDF, as well as references to our product pages on the Web in the menu on the left.

Note: The Products of the O&O RescueBox can only be installed individually. Please have the license keys ready, which you received with the purchase of the O&O RescueBox.

1. Select an O&O program in the welcome dialogue on the left for the installation.
2. Click on **Install program**. Select either the 32 Bit or 64-Bit installation according to your processor.
3. After the setup program has been successfully initialized, please follow the installation dialogue.
4. After the successful installation you can execute the O&O program via the start menu **All Programs/O&O Software**.
5. To use the programs full scope, you need to enter the [License information](#) in the registration assistant. You received the license key with the purchase of the software.

Enter license

Note: the information in this chapter is not relevant for you, if you use O&O products directly from CD under Windows PE. A registration is only possible under Windows.

Note: Products from the O&O RescueBox can only be installed or uninstalled individually. You will receive 3 license keys upon purchase of the O&O RescueBox.

The prompt to register pops up automatically at the start of a O&O program, if you use an unregistered version, or enter the wrong license key.

The registration wizard allows for a simple registration process.

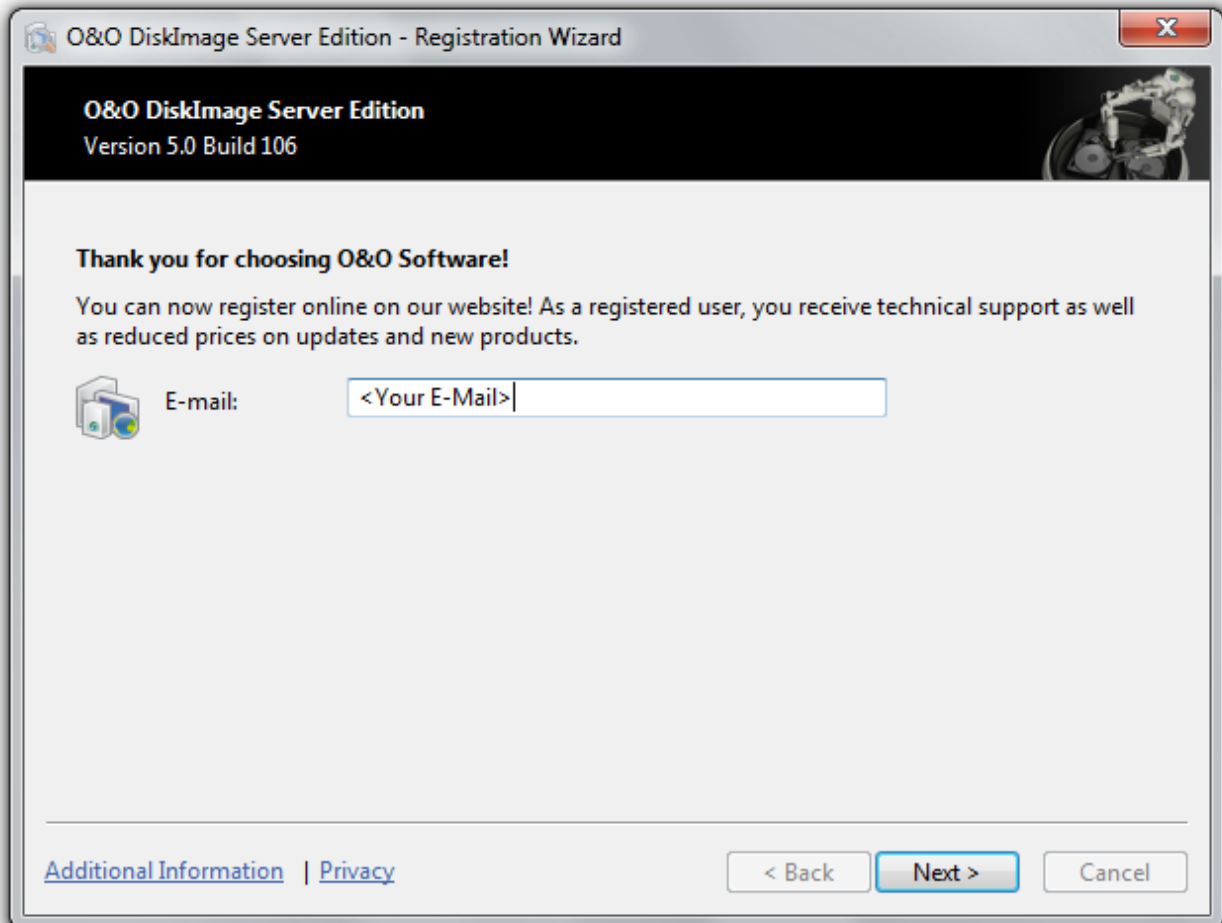
1. If you select the option **I want to enter my license**, a dialogue appears where you can enter your license information. You received the license key with the purchase of the software.
If you have purchased the **download version** of the software, please enter the license information ("Name", "Company" and License key), just as they are written in the confirmation E-Mail you received.
If you have purchased the **box version** of the software, please enter the license key as it is written on the license card included. In addition, please enter your name and if needed your company.
2. Please make sure that you do not confuse the digit "1" with "l" or enter any empty spaces where they don't belong.
3. Press **Next** to save the registration data or **Cancel** to leave the dialog window without saving the data.
4. When you have correctly entered the license code you will receive a confirmation in the dialog window.

If you encounter problems during while entering your license key, please contact our Support: support@oo-software.com

Online registration

To register the O&O program online, you'll need the license key you received when you purchased the program.

To register online, start the O&O program. The questions related to online registration always appear at the start, provided you haven't registered online.



Online registration

What are the advantages of online registration?

Online registration gives you the benefit of having your customer data kept safely in our files, which means we can provide you with even better service. If, for example, you lose your license key, you can quickly and easily ask us to send you a new one. The license key is needed for, among other things, purchasing updates or reinstalling your O&O programs when you make a new setup for your computer.

Further advantages will let you:

- Be supplied with the latest information about our products
- Make free updates on new versions of purchased items (minor updates)
- Upgrade to a new version at a special discount price (major update)
- Obtain support from our customer service

How do I register online?

If the O&O program was purchased on our Online Shop, you've automatically registered with us. If the O&O program was purchased through a dealer, you'll be asked during the installation if you'd like to register. You then have the option of either registering immediately or at another time. All you'll need is a functioning Internet connection and a valid license key.

You may also complete the registration form right here:

<http://www.oo-software.com/register>

Just return the completed online form by clicking "Send" and you'll be eligible to take full advantage of our O&O Customer Service.

Start directly without operating System

To start the O&O RescueBox directly from CD, you don't need to install the programs included. You need the CD functions, for instance, if you want to restore a system partition with O&O DiskImage, or Windows doesn't boot up anymore and you still want to restore your data with the integrated data rescue products. If you want to start the O&O RescueBox without an operating system, proceed as follows.

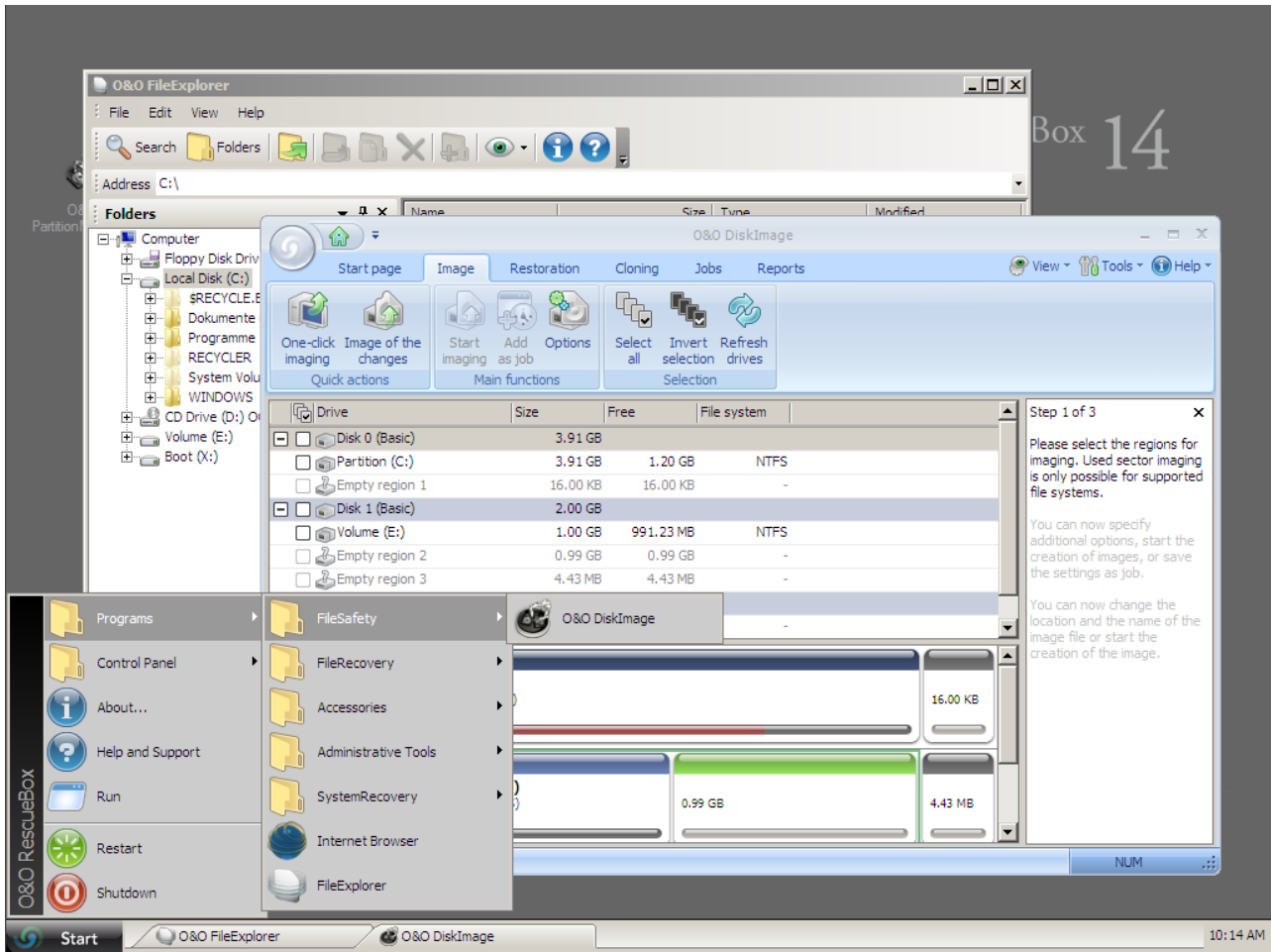
1. Make sure that your system is able to be started from a CD. You can place the appropriate settings in BIOS. Further information can be obtained from your motherboard manufacturer.
2. Put the O&O RescueBox CD in your computer's CD/DVD drive.
3. Restart the computer.
4. Follow the instructions at the start of the CD. The system settings will subsequently appear in the window.
5. Confirm the license agreement of the O&O RescueBox.
6. In the next step you can load additional drivers for the devices, if they haven't been found under Windows PE („Preinstallation Environment“).
7. Select **OK**, to start the O&O RescueBox.



Desktop view to start from CD

Note: Under certain circumstances you may receive a message requiring you to restart if you have loaded an additional driver under Windows PE. This message is automatically generated by Windows PE but is irrelevant when starting from a CD. Simply decline the request and follow the further instructions in the pop-up window.

Start directly without operating System



Start menu of the O&O RescueBox under Windows PE

Load drivers

If a device like a hard disk or network card isn't automatically recognized when using the Start CD under Windows PE, it could be that a required driver for the controller (e.g., for RAID) is missing.

You can start loading a new driver immediately after inserting the Start CD using the dialog **O&O System settings** and the tab **Drivers**. You can also find this dialog at a later moment under **Start/O&O System settings/Drivers**.

Please follow these instructions for loading a new driver:

1. Open the tab **Drivers** in the dialog **O&O System settings** as described above.
2. All recognized Windows devices as well as all devices missing installed drivers will be displayed.
3. Select the device for which you want to load a driver.
4. Click **Load**.
5. Select the desired driver such as one on a connected hard disk, USB Stick or CD*.
6. In the dialog, select **Open** to install the driver.
7. You'll then see a program message informing you about the status of the installation.

* **Note:** You can remove the Start CD from the drive in order to insert a driver CD from a manufacturer.

Note: Please be aware that for running on Windows Server 2008 32 bit the corresponding drivers are required. It is possible, that the drivers for Windows Vista 32 bit already work fine.

Start directly without operating System

Note: Under certain circumstances you may receive a message requiring you to restart if you have loaded an additional driver under Windows PE. This message is automatically generated by Windows PE but is irrelevant when starting from a CD. Simply decline the request and follow the further instructions in the pop-up window.

Note: Encrypted drives are not supported under Windows PE

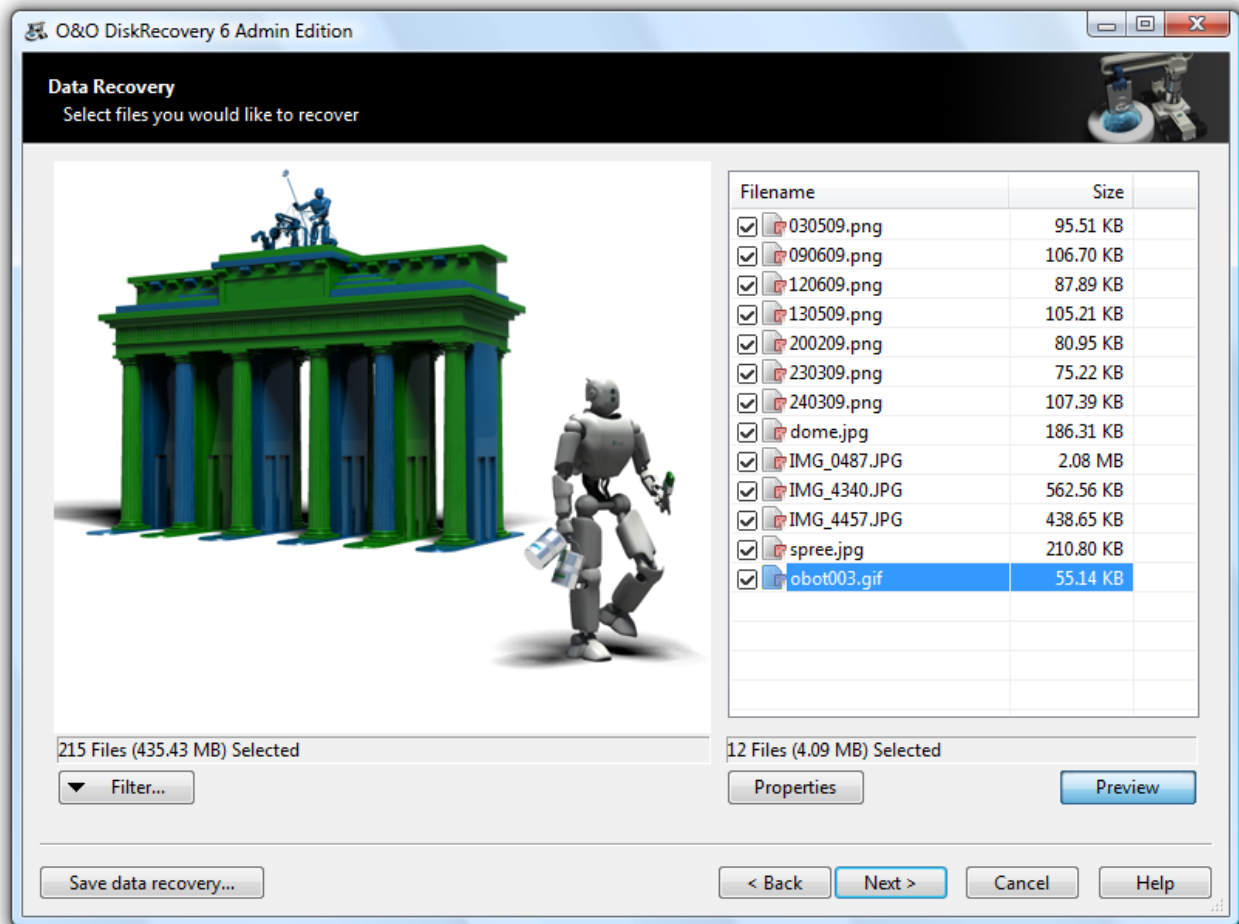
Getting started with O&O DiskRecovery

Connect the drive, from which you would like recover data, to your computer. It is necessary that your computer is running a compatible version of Windows.

1. Start O&O DiskRecovery from **Start/All Programs/O&O Software/O&O DiskRecovery**.
2. After the start you will get to the drive selection by clicking on **Continue**. Select the drive on which you would like to recover data and confirm by clicking on **Next**.
3. Confirm the initial data recovery settings on the next page by click on **Next**. After the following page, the data recovery operation will begin.
4. After the scan for deleted data has been completed you may now select from the list of folders and files the deleted files you would like to restore. With some file types (e.g. pictures) you can see the content of the file. This function is activated with **preview**.
5. Clicking **Next** will lead you to the selection of the target folder. In this folder your restored files will be saved.
6. In the next step the files will be restored. After this is complete, you will be able to view a status report of all actions taken up to this point. You can now close O&O DiskRecovery.

Note: Please make sure that there is sufficient disk space on your system and the target folder is not located on the drive where you would like to recover the deleted data.

Regarding O&O RescueBox/O&O BlueCon: It is possible to execute the data restoration directly from the bootable O&O RescueBox-CD or the O&O BlueCon-CD without needing a bootable Windows operating system!



Preview (Image File)

Selection of search process

O&O DiskRecovery offers various search techniques in combination. The search techniques employ different search techniques to rescue data, which optimally complement each other.

As a rule, all search techniques are activated. In the search for deleted files all will be used for any inquiry. Depending on the size of the disk, this could take some time.

Selecting individual search techniques e.g. only O&O UnErase, offers the advantage that the search for deleted files is faster. If you are missing files after the first search run, you can use another search technique.

Note: It is possible that not all scan processes will be fully run during a scan. This can be caused by the scan requiring an increased memory load. You'll notice this when, for example, a higher number of files are found, or one of the three scan processes results in no found data at all. To avoid this, you should run a new scan and when doing so, disable one of the scan processes. You should either run O&O UnErase and O&O FormatRecovery OR O&O UnErase and O&O DiskRecovery.

O&O UnErase

Even on large hard disks, searching for files will only take a few moments thanks to the intelligent search algorithms employed by O&O UnErase. Even if some parts of your file have been overwritten with data, it is still possible to restore the other parts. Yet, it is also possible that not all deleted files are found.

O&O FormatRecovery

Compared to O&O UnErase and O&O DiskRecovery, O&O FormatRecovery is able to restore data, of which folder and structure information is missing completely. The advanced functions of the special search algorithm of O&O FormatRecovery makes it possible to locate and ignore the defect sector. As a result, it is still possible to conduct a data rescue even if the disks is damaged.

O&O DiskRecovery

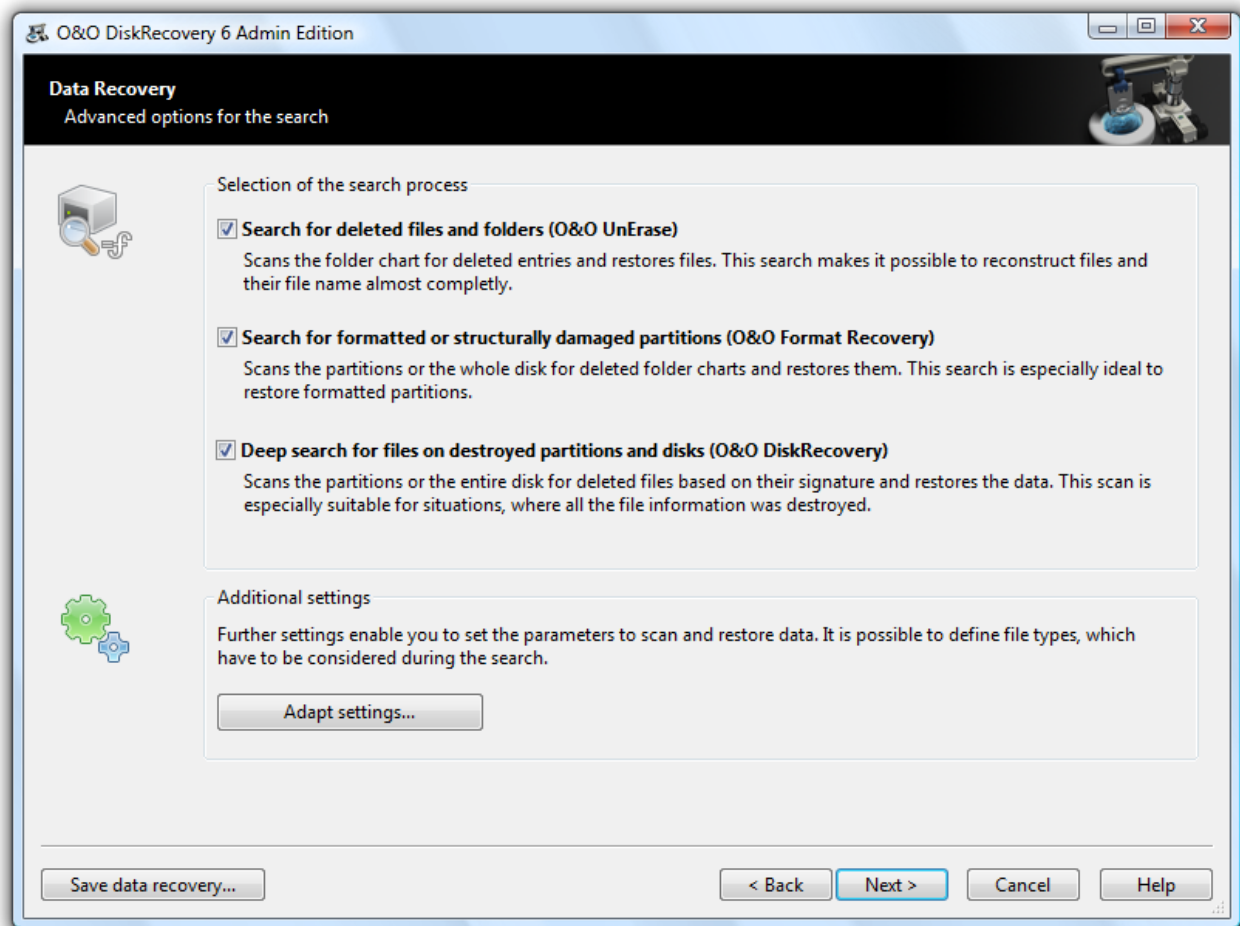
The search algorithm of O&O DiskRecovery scans all sectors of the hard disk, the memory card or the USB Stick for lost files. Even formatted or destroyed file systems have a good chance of having data reconstructed. After completing a scan, it is possible to preview the files that can be restored. O&O DiskRecovery supports various picture and text formats in the preview function (among other things JPEG, BMP, TIF an many more).

Most of the time it makes sense to use all three search methods when recovering data.

You can set further settings under **Adapt settings**.

Note: Please bear in mind that the search techniques used by O&O FormatRecovery on e.g. hard disks encrypted with BitLocker, cannot reconstruct data.

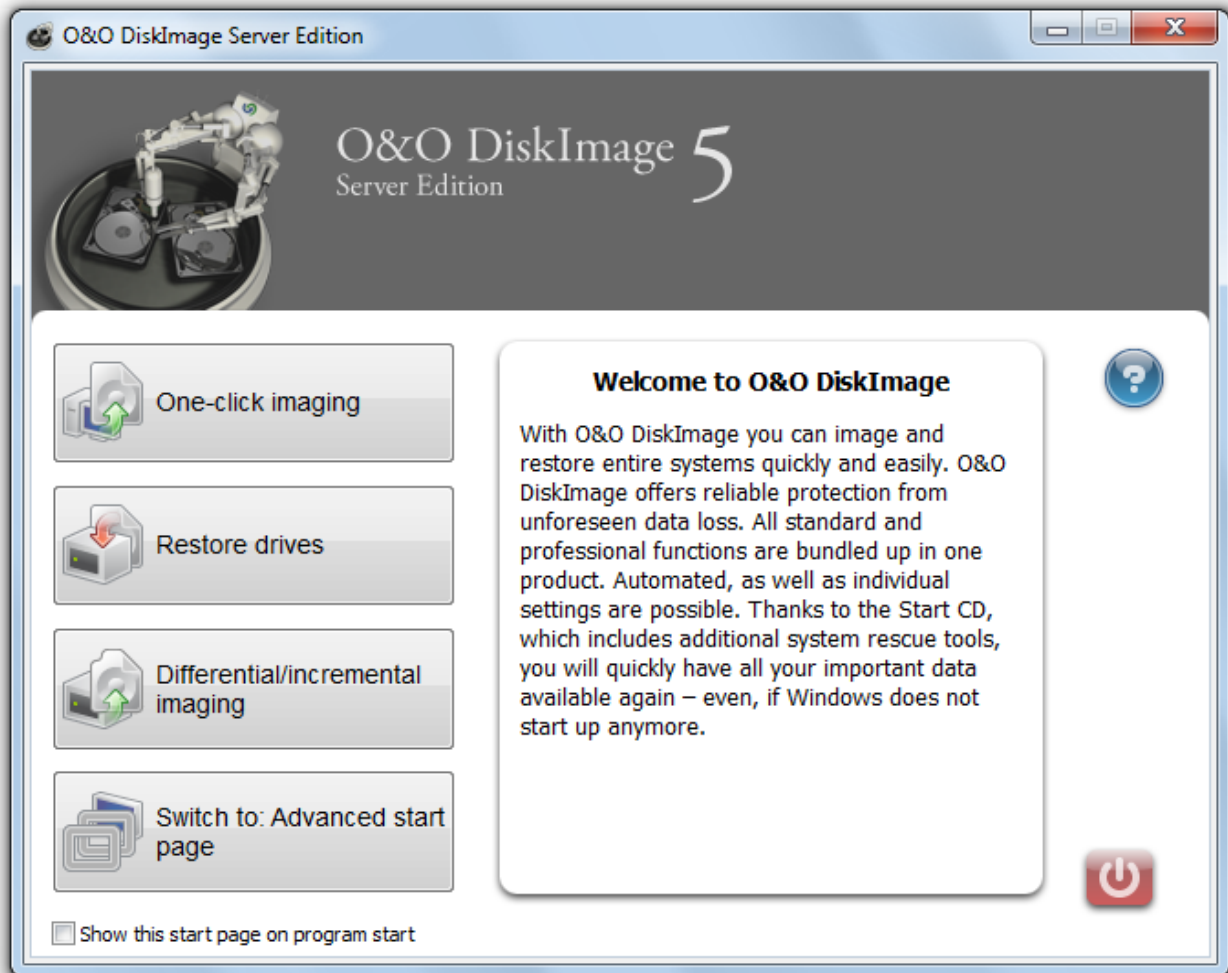
Getting started with O&O DiskRecovery



Select search technique

Getting Started with O&O DiskImage

In this section we will explain how, after successfully installing O&O DiskImage, you can take images of drives or your entire computer and restore them back to your computer. Start O&O DiskImage either from an icon on the Desktop or under **Start/Programs/O&O Software/O&O DiskImage**. You can also have online help displayed by clicking **Help** or pushing **F1**.



Start page of O&O DiskImage

Tip: If you want to run features such as imaging individual drives or cloning a drive, click **Advanced start page** and work from there.

More:

[One-click imaging - Create an image of the entire computer](#)

[Differential/incremental imaging](#)

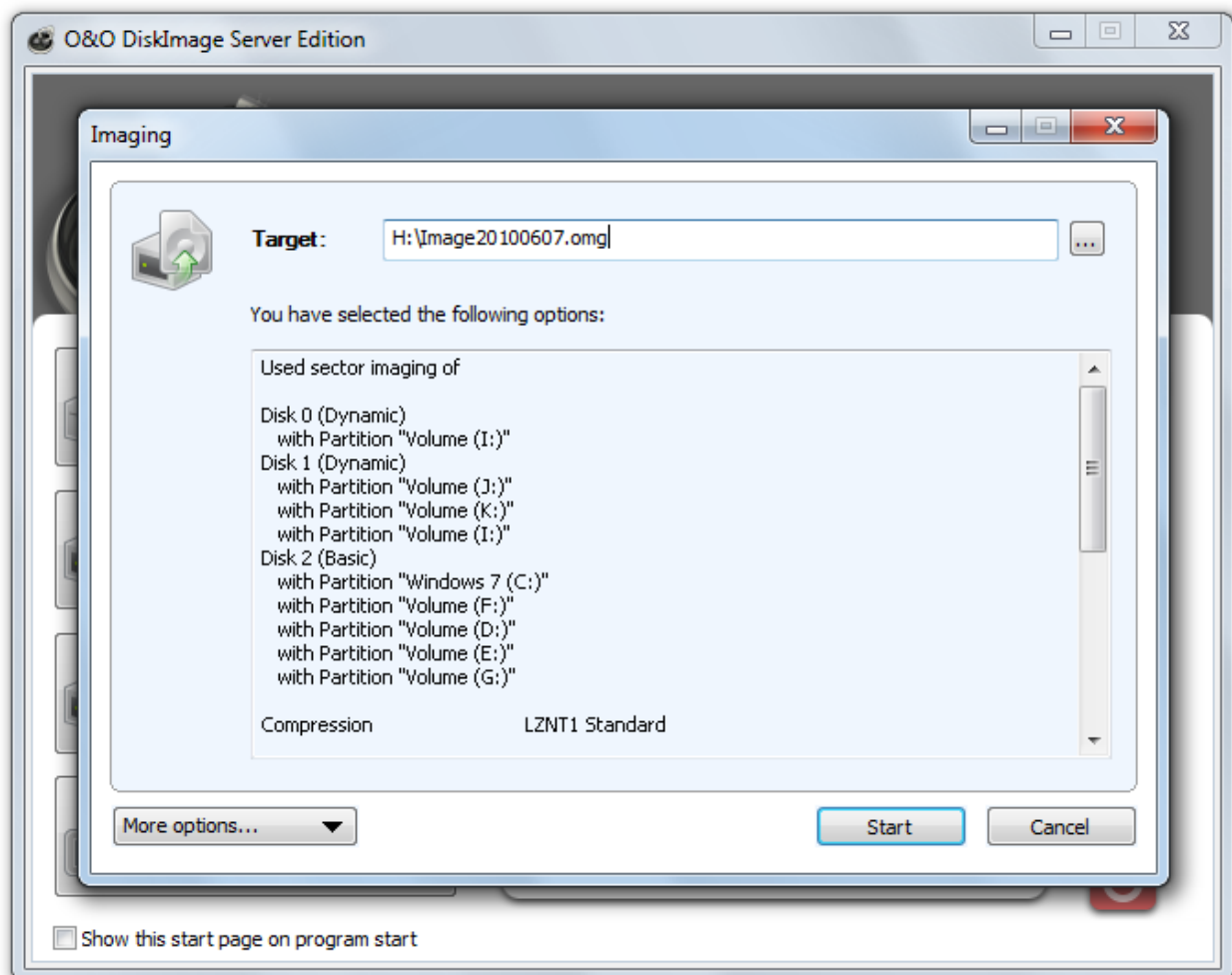
[Restore drives](#)

One-click imaging - Create an image of the entire computer

One-click imaging is the fastest and easiest way to create a complete image of all your data and settings. One-click imaging is especially useful if you are using O&O DiskImage for the first time, or have not yet created an image of your computer. Your entire computer including the system partitions are imaged with one click. The compression method (LZNT1) and the imaging method (imaging used sectors) are set as default. "One-click imaging - Create an image of the entire computer"

Note: We recommend using an external disk, e.g., a USB hard disk or a network drive as a target for One-click imaging.

1. Start O&O DiskImage and select **1 click imaging** on the Start page.
2. Then check to make sure the target path is set to your desired storage location.
3. The image is automatically named after the creation date. You can however enter a name manually.
4. Click on **Start** to initiate the imaging process. The imaging process can take some time depending on the size of the hard disk(s).



1 click imaging settings

Tip: Further settings can be specified in the dialogue **More options**.

Differential/incremental imaging

The **Differential/incremental imaging** function creates an image that saves only the data that's been changed since the last base image. As a rule, an image of the changes requires less disk space than a complete image.

To create an incremental image, you must have first created a complete image of the respective drive. As a base image you can use either a "complete" image, using the methods "Used sector imaging", "Forensic imaging" or "Direct forensic imaging", or by using a previously created incremental image/differential image.

Follow the instructions below:

1. Please make sure that the drive containing the base image is connected to your computer.
2. On the O&O DiskImage start page, click **Differential/incremental imaging**.
3. Select your base image in the browser window and click **Open**.
4. Now you can either select the recommended drive for saving the image, or enter a new target path. For greater clarity, it's advisable to store the base image and its respective incremental/differential image file on the same drive. You may, however, use any drive you wish.
5. The image is automatically named after the creation date. You can however enter a name manually.
6. Now click **Start** to create a differential/incremental image from the base image. The Imaging method of the original "complete" image, e.g. Used Sector Imaging, remains the same and cannot be amended.

Note: the option **Compare data with checksums** is set as default. While creating incremental images, it is sufficient to use the last incremental image as base image. Should **Use checksums to administer unchanged data** not be set, you will need the last base image and all the incremental images previously created, since all of them will be accessed for creating the new image.

Restore drives

If you want to restore one or more drives from an existing image, click **Restore drives** on the O&O DiskImage start page. O&O DiskImage, by default, will always go the place where the last image was saved. If the image file presented is not the one you want, browse through your drives and enter the path to the image file.

1. Select the image file (*.omg) or (*.vhd) in the dialog window and then click **Open**.
2. All drives contained in the image will then be displayed.
3. Click the drive that you want to restore ("play back").
4. In the following dialog, select the target drive for restoration by clicking next to it. You can either replace an existing drive or create a new one: for example, in an empty sector.
5. Click **Map** if you want to continue with restoration or select additional drives from the image.
6. In the following dialog under **Further options**, you can specify whether certain functions should be executed when restoration is completed. These functions are disabled by default.
7. Once you've enabled all the settings, click **Start** to begin the restoration process.

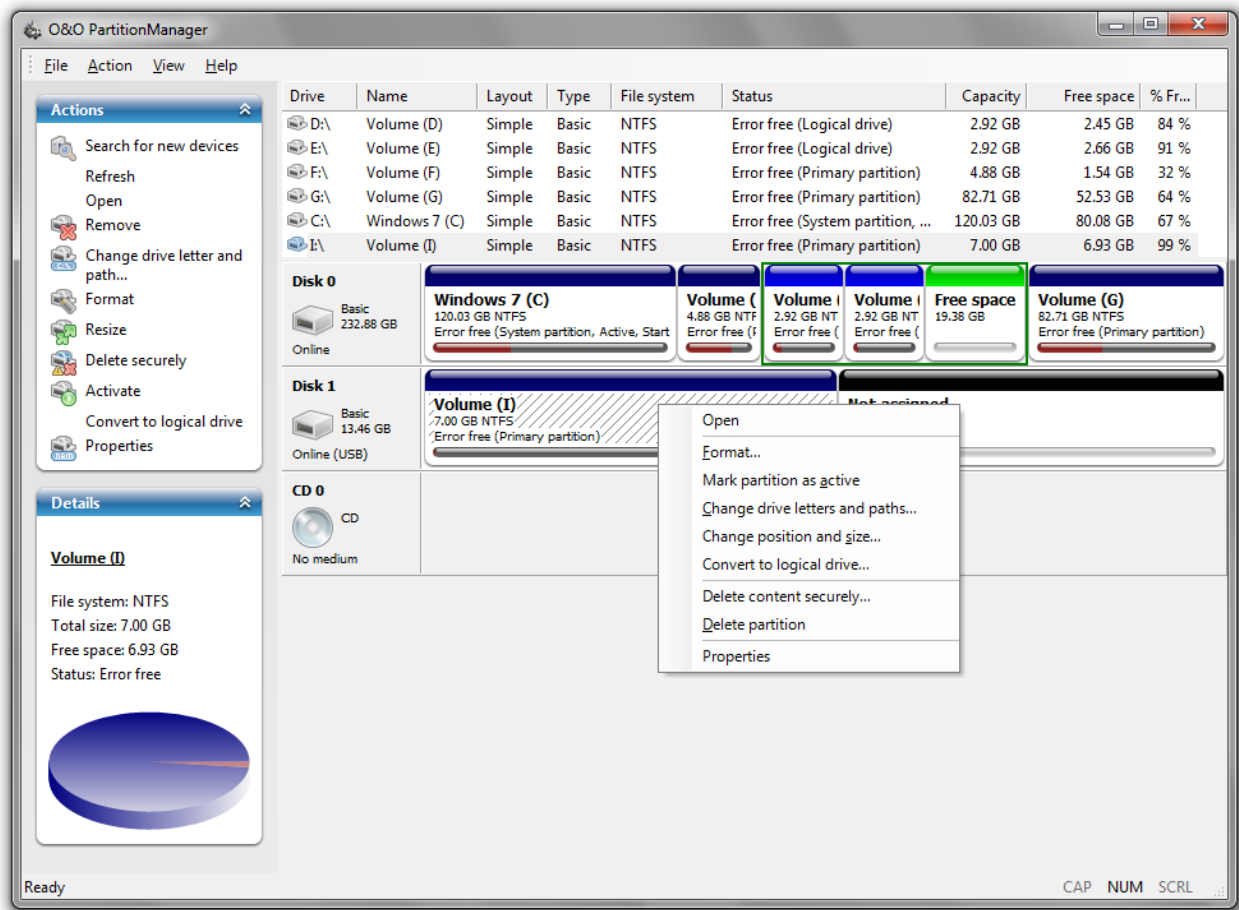
Important: During restoration, the image overwrites your selected drive with the data of the drive contained within the image. All data saved on the target drive is thereby lost and replaced by that of the image.

Getting Started with O&O PartitionManager

The following chapters will give you a broad view of the program functions available on O&O PartitionManager. Many functions on it have been designed in a way similar to the Windows Disk Manager. Beyond that, however, O&O PartitionManager has a number of useful functions that will make it even easier for you to manage your hard disk.

You can start O&O PartitionManager under **Start/Programs/O&O Software/O&O PartitionManger**. The Online Help will open, if you click on **Help** or press **F1**.

Important! There is a risk, in the event an action cannot be run successfully, that data saved on the respective drives could be partially, or even totally lost. To be on the safe side, we suggest you create an image of the original drives before using the O&O PartitionManager: a tool like [O&O DiskImage](#) is ideal for this purpose.



User Interface of O&O PartitionManager

Change the size of a drive

You can change the size of a partition, a volume, or a spanned volume. It's also possible to move a partition.

More:

[Change the size of a partition](#)

[Move a partition](#)

[Change the size of a volume](#)

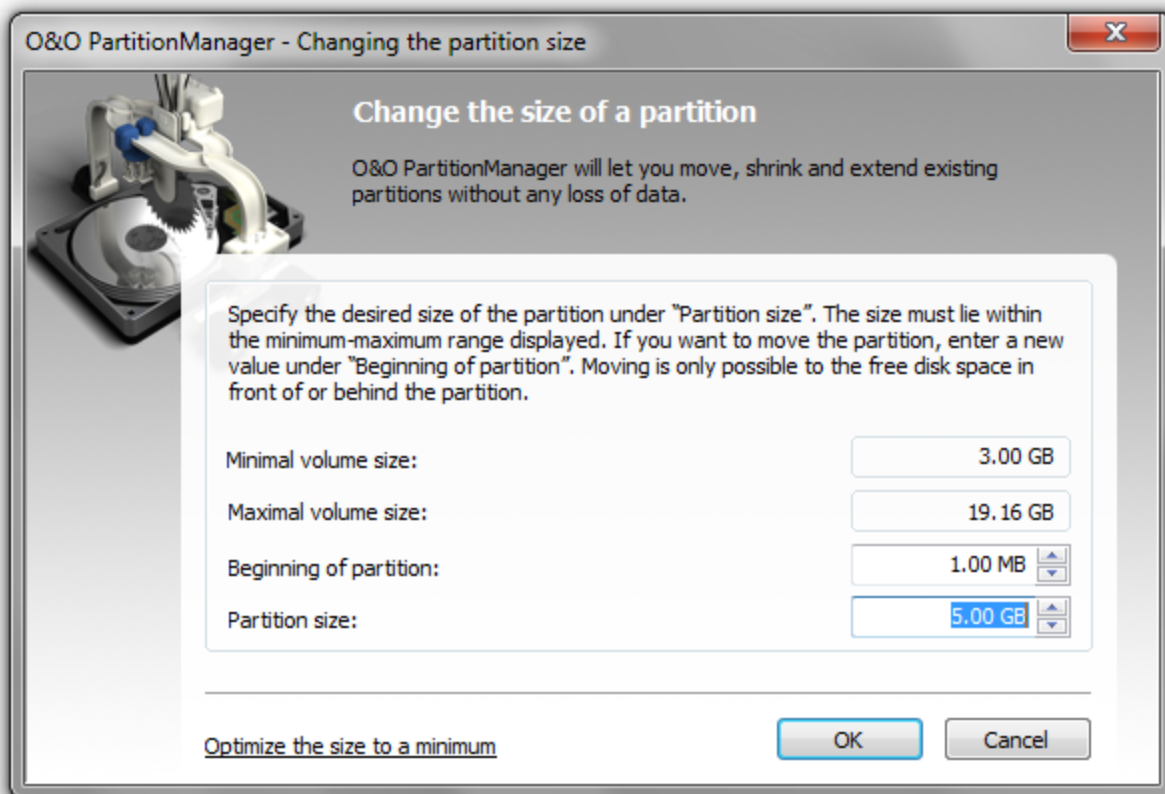
[Optimize the size to a minimum](#)

Change the size of a partition

1. To change the size of a drive, right-click the desired drive or in the menu bar on **Action/All actions** on the start page of O&O PartitionManager and select **Change location and size**.
2. Adapt the drive size in the dialogue under **Partition size** according to the shown minimum and maximum values.

Note: Please bear in mind that you can only extend the partition by the free space available, which lies behind the drive in the graphical drive display.

Note: We recommend choosing the option [Optimize the size to a minimum](#), before shrinking your drive. Optimizing can take some time, depending on the size of the partition.



Changing partition size

Note: If the action is not successfully run, there is a risk that data saved on the drive will be partially or fully lost. To be on the safe side, before increasing the size of a drive, create an image of the original drive with O&O DiskImage.

Note: Please bear in mind that shrinking or extending the system partition is only possible when using the Start CD under Windows PE.

Move a partition

Important! We strongly advise against moving a system partition under Windows Vista. Moving a partition will result in Windows not automatically starting the next time you start your computer.

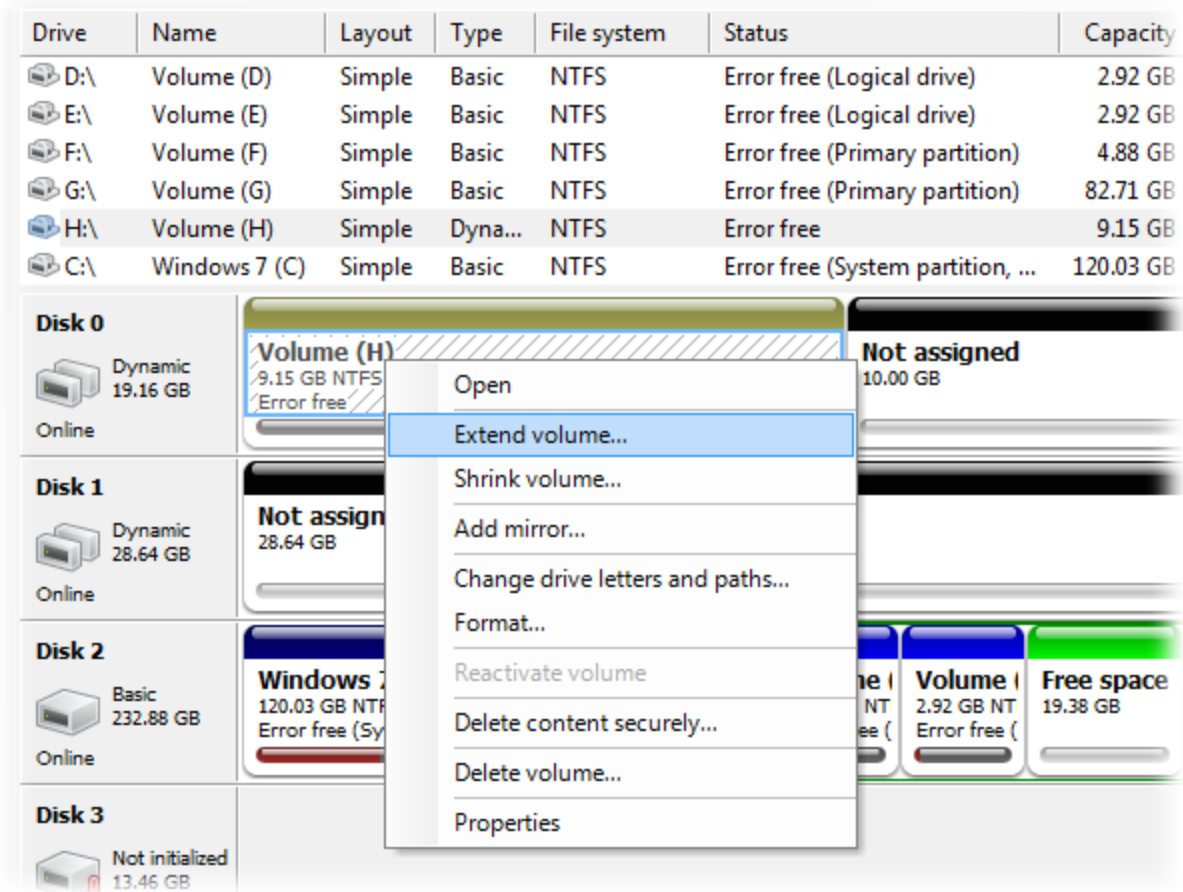
Note: Please bear in mind that you can only move the partition by the free space available in the direction you are moving it to. The free space must be located directly behind the partition, otherwise it is not possible to move it.

1. To move a partition, right-click the partition or in the menu bar under **Action/All actions** on **Change location and size**.
2. Adapt the position of the volume in the disk under **Beginning of partition**. The higher the value, the more it will move to the back.

Change the size of a volume

Volumes are located on dynamic disks. There are simple and spanned volumes. A spanned volume needs to be located on at least two dynamic disks.

- To extend the size of a volume, right-click the volume and then click **Extend volume**. All the available disks will be displayed.



click menu of a volume

Right-

Extend simple volume

1. If you only want to extend the volume, just enter the desired size under **Disk space in MB**.
2. Click **Continue** in the wizard and set additional settings. The extended volume will then be created.

Extend the volume onto multiple disks

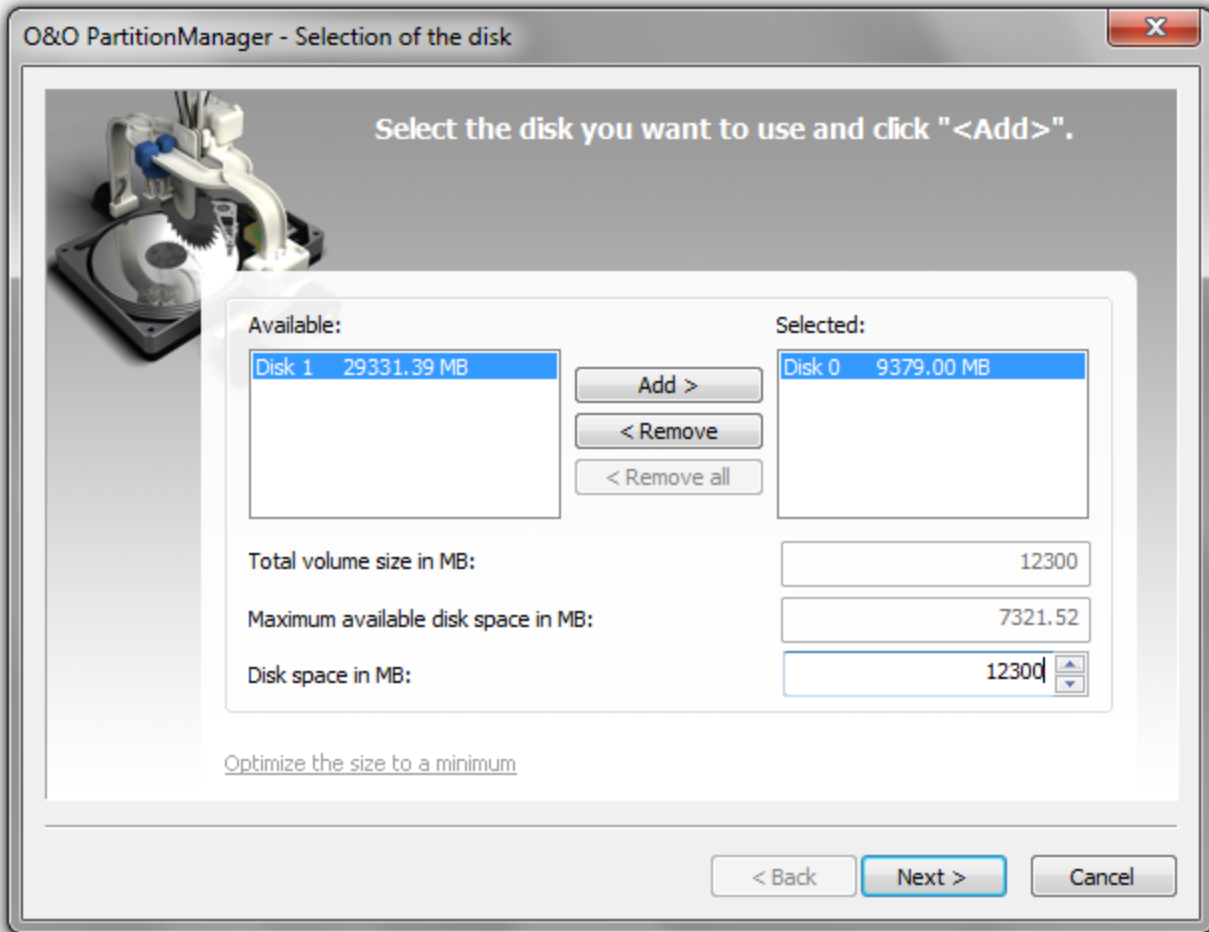
1. If you want to extend a volume onto multiple disks, select the additional disks you want from the list on the left and click **Add**. This will result in the volume being automatically created as a spanned volume in a later process.
2. Now specify the respective size of the volume for each disk. Select the first disk under "Selected" and enter the size you want the volume to be under **Disk space in MB**. Then select the second disk and enter the size you want the volume to be on this disk.
3. Click **Continue** in the wizard and set additional settings. The spanned volume will then be created on the disks you have selected.

Shrink volume

1. To shrink a volume, right-click the volume and then click **Shrink volume**. All the available disks will be displayed.

2. If the volume is located on multiple disks (spanned volume), you can select whether the volume should be shrunk on all or just one of the disks.
3. Using **Add/Remove** select the disk or disks you want. By removing a disk from the selection, the volume will not be shrunk on it.
4. Click **Continue** in the wizard and set additional settings. The volume will then be shrunk.

Note: Only simple or spanned volumes can be extended or shrunk. RAID, mirrored, and stripe set volumes cannot be changed.



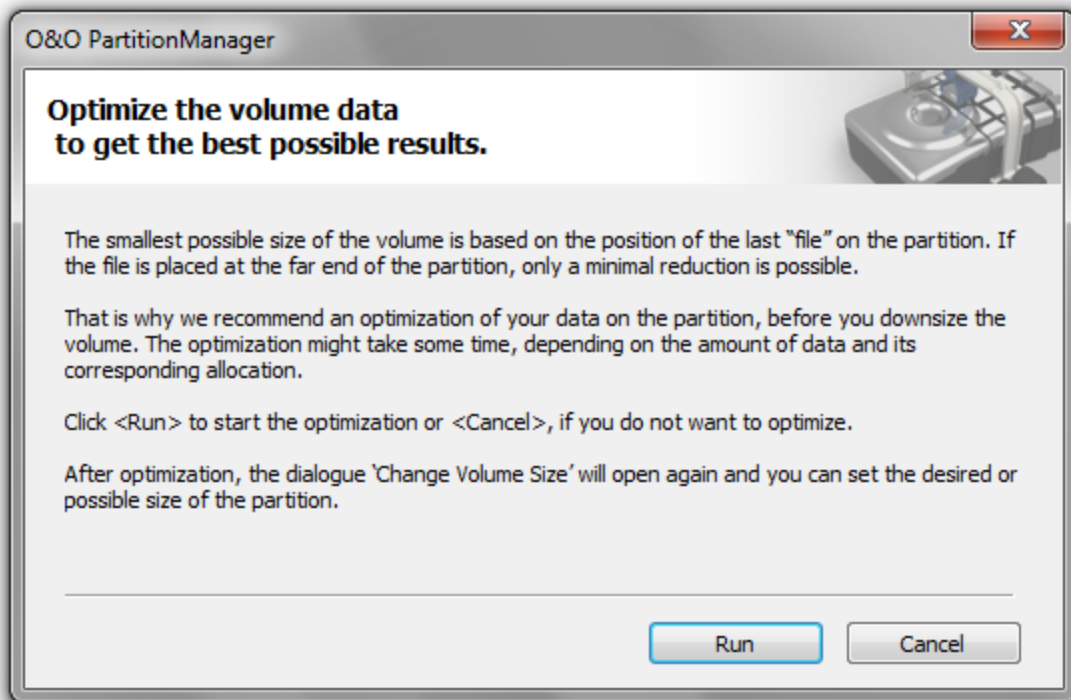
Change the size of a volume

Optimize the size to a minimum

You can shrink a drive (volume or partition) down to its free disk space and even until the last physical file on the volume. You can also find free space in between files on some drives (so called "holes") that cannot be used when shrinking. These holes can be closed by optimizing the drive. We therefore recommend optimizing your drive before shrinking it. As a result, all files will be reorganized and saved back to back (which uses up less space). In other words, your files will physically be moved forward, and the distance from the last file to the end of the drive will be increased. This will allow the drive to be shrunk to a minimum. The process of optimization is based on the technology contained in our multiple award-winning defragmentation program, O&O Defrag.

Important: If shrinking the drive is not successfully run, there is a risk that data saved on the drive will be partially or fully lost. To be on the safe side, before reducing the size of a drive, create an image of the original drive with O&O DiskImage.

Note: Please bear in mind that shrinking or extending the system partition is only possible when using the Start CD under Windows PE.



Optimize the size to a minimum

Support and Contact

For more information about the O&O program, please visit our website <http://www.oo-software.com> and get the latest information about product developments and support. Also included on our website are regularly updated FAQs and Knowledge Bases that address the most common issues regarding our products.

All registered customers receive installation support, free of charge, for the first 30 days after registration. When contacting our support team, please remember to have your registration code available.

In addition, it may be helpful to read the frequently asked questions (FAQ) section of our Website before contacting our support team. It's always possible that your specific question or problem has already been addressed.

O&O Software

Address: Am Borsigturm 48
13507 Berlin
Germany

Telephone: +49(0)30 4303 4303

Fax: +49(0)30 4303 4399

Web: <http://www.oo-software.com>

e-mail support@oo-software.com

sales@oo-software.com

Authorized Resellers

Our authorized reseller partners in over 30 countries stand ready to assist you with answers to all questions regarding the licensing and purchase of our software products. Their names and addresses can be found on our website, under the heading "Partner – Find Resellers". Just ask us, we'll be happy to help you find an authorized partner in your vicinity.

Endbenutzer-Lizenzvertrag 2.7 (EULA)

O&O Software

GENERAL and SPECIALIZED SECTION

GENERAL SECTION

IMPORTANT – PLEASE READ CAREFULLY

This End User License Agreement (EULA) is organized into 2 sections: a general part, which is valid for all O&O products, and a specialized part, which includes the particular terms of each corresponding product. By accepting both parts of the license terms they automatically form part of your contract with O&O Software, Am Borsigturm 48, 13507 Berlin. If you have any questions regarding this contract and the license terms, our Service Team is available to help you under info@oo-software.com.

The software product is protected by copyright laws and international copyright contracts as well as other laws and agreements concerning intellectual property.

1. Object and form of delivery

- (1) You receive the software covered by the contract in executable form (Binary code) together with the relevant documentation released by O&O according to Section (6).
- (2) The software provides the range of functions described in the given documentation. The documentation regarding functionality may be consulted prior to concluding the contract in the Internet presentation on the following site <http://www.oo-software.com/>.
- (3) Delivery will be made according to the way in which you have purchased the software, either by having a disk directly handed over or sent by mail to an address you have supplied or through the forwarding of license as well as any required download information to a given E-mail address.
- (4) If you are currently receiving updates as part of a maintenance agreement, these will continue to be supplied in the same way as the initial software delivery, i.e. for a disk sent by mail, a disk containing the update will be sent to the given address: for electronically delivered keys, a key for downloading updates will be sent to the given E-mail address.
- (5) Changes to the delivery or E-mail address can only be taken into consideration when they are supplied in writing or by E-mail to the address or E-mail address indicated on <http://www.oo-software.com> at least two weeks before delivery of the update.
- (6) A printed copy of the documentation will not be included in delivery. The documentation consists primarily of electronic aids.

2. Requirements for application (system requirements)

- (1) Installation of the software is not part of the agreement.
- (2) Depending on the software, there are certain system requirements that must be met in order to use the software according to the terms of this contract. These will be defined according to each product in the specialized section of this contract.

3. Rights of use, including test versions, unauthorized transfer, and application

- (1) O&O grants you, upon payment of the agreed one-time fee, a permanent, spatially unlimited and non-exclusive right to use the software.

- (2) Test versions – if you have installed a test version of one of our products taken from the O&O Website <http://www.oo-software.com/>, the right of use will be, according to the program, for a limited time only and/or technically restricted.
- (3) One copy of the software is entitled to be used on a maximum of one (1) output device/workstation simultaneously.
- (4) If you want to use the software on more than one output device/workstation, the rights of use must be extended accordingly. To find out which O&O products are also available as volume licenses, please consult (<http://www.oo-software.com/>). The separate price list concerning O&O Volume Licenses will apply to extending the rights of use without redelivery.
- (5) Any use beyond that agreed upon in the contract is one in violation of the contract. In such a case, you are required to report this use that exceeds the rights of use to the supplier without any delay. The parties will then try to bring about an agreement for extending the rights of use. For the duration of the excessive usage, i.e., until the conclusion of such an agreement or the cessation of the excessive usage, you are required to pay compensation for this excessive usage according to the amount indicated in our price lists. The amount of compensation will be calculated on the basis of a four year, straight-line depreciation. If we are not informed of the excessive usage, a contract penalty in the amount three times the price of the usage indicated in the price list will be due O&O.
- (6) You are entitled to create a backup copy of the software and to conduct ordinary data backups. The creation of more copies than the amount needed for the backing up of any future usage (including the backup copies and data backups) is not allowed.
- (7) Copyrights and other trademarks within the software may not be altered or removed. They must be transferred onto every copy of the software.
- (8) Unauthorized transfer – only when you have purchased the software with an accompanying disk are you permitted to transfer it and then, only under the following conditions: a resale of the software is only permitted when it involves an entire software copy, i.e., by surrendering your own usage of the purchased copy, you are entitled to transfer these rights of use of the disk onto a third party according to the terms of the agreement existing between you and O&O. When making such a transfer, you are required to hand over to the third party all materials related to the software that are covered in the contract and to delete the software from any storage volumes (e.g., hard disks) remaining in your possession.
- (9) Unauthorized rental and service – The purchase of this contract does not entitle you to any public transfer or rental of the software. You are also not entitled to include the software as part of your providing services for and in the presence of any third parties. You may purchase an appropriate license from O&O for doing this.

4. Payment

- (1) The prices are given with the corresponding sales taxes included, unless otherwise indicated.
- (2) Test versions – Downloads of test versions offered by O&O are provided free of charge, unless otherwise indicated.
- (3) If you receive updates of your programs as part of a Maintenance Agreement, the terms of payment in these contracts will apply to these Maintenance Agreements.
- (4) O&O is entitled to forward any data it has received onto third parties requiring it for purposes of collection.
- (5) Until payment is made in full, O&O retains possession of all rights, particularly those concerning copyrighted rights of use, on the materials included in this contract. O&O is specifically entitled to cancel a contract, for example, when your payment is delayed, it prohibits the further using of the software and demands the surrendering of

all copies or this being impossible, to demand their deletion. Should a third party have access to the object of purchase before payment is completed for the contractual software, you are required to inform this third party about the object being the property of O&O and to inform O&O, in writing, about the third party's access.

5. Material defect and defect of title

(1) The software package or download you receive is free of any material defect or defect of title.

(2) A material defect exists when the software is unable to be used as described in the documentation appearing on the website <http://www.oo-software.com/> and included in delivery or available for downloading.

O&O is constantly checking to make sure that other sources are not misrepresenting the functions and properties of the software as described in the documentation. You can therefore assume that any descriptions beyond those found in the software documentation have not originated with O&O and are also unknown to it. Please inform O&O if you learn of any software descriptions that include functions and properties not mentioned in the documentation.

(3) Please inform O&O if you learn of any software descriptions that include functions and properties not mentioned in the documentation.

(4) Any claims concerning defects of material and/or title related to the software have a limitation period of two years subsequent to delivery of the program or transmission of the serial number needed for downloading. If you are not a private individual, the warranty period is shortened to one year.

If O&O has fraudulently concealed a material defect, a three year limitation period will cover claims related to this defect.

Payment for compensation that you might have been entitled to as a result of cancellation or an abatement can be refused upon expiration of the limitation period.

(5) You are required to inform O&O, in writing if possible, of any defects that arise immediately upon their discovery. While doing so you should also describe, as well as possible, how the defect is communicated, the effect it has on the program, and under which circumstances it occurs.

(6) Should defects be reported to O&O within the limitation period, it will undertake a cure free of charge.

(7) As part of the cure, the corrected software will be redelivered as agreed. An on-site analysis and correction of the error on your system will not take place.

O&O assumes the ensuing expenses for the cure, in particular the costs for transport, labor, and material. You are personally responsible for installation. O&O specifically does not assume on-site installation as part of its obligation with regard to defects of material or title.

Should a change of the program be required as part of the cure, O&O will make the necessary changes in the documentation without any charges.

(8) After the unsuccessful expiration of a deadline you set for cure, you can cancel the contract or reduce the purchase price and demand compensation instead of service or the replacement of any futile expenditures.

(9) A deadline is not required when

- a) O&O refuses both kinds of cure, even if it is entitled to do so as a result of the arising expenses or
- b) the cure is impossible or
- c) the cure is unacceptable to you or

d) the cure is unsuccessful.

A subsequent improvement is considered a failure after the second unsuccessful attempt unless there is something particular about the type of software or the defect itself or the surrounding circumstances that would indicate otherwise.

(10) You are not entitled to cancel the contract if the defect is negligible, nor may you, in this event, demand compensation instead of full service.

(11) In the event of cancellation, compensation is due for any uses made. The compensation for use will be based on a four year, straight-line depreciation of the purchase price.

(12) As a result of the abatement, the purchase price will be reduced by the amount which is calculated for deducting the defect from the value of the software. The standard used will be its value at the time the contract was concluded. The amount, when necessary, is to be calculated by estimation. As a result of this reduction, any amount larger than that paid for the reduced purchase price will be refunded.

(13) If it turns out that a reported problem did not arise as a result of a defect in the software, O&O is entitled to invoice you, according to the amount charged in its price lists for such services, the expenses for analysis and correction of the problem if you can be accused of malice or gross negligence.

(14) The seller's warranty is canceled when changes are made on the software without expressed written consent or when the software is not used as intended or used in an improper software environment, unless you can prove that these facts had nothing to do with the problems that occurred.

6. Limitation of compensation

(1) O&O is liable for compensation for every legal ground to the extent described in the following provisions.

(2) The extent of liability of O&O for damages caused by malice or gross negligence arising from O&O itself or one of its vicarious or legal agents is unlimited.

(3) There is no limit to the extent of liability of O&O or any of its legal or vicarious agents for damages involving injury to life, physical well-being or health, or for simple breach of duty.

(4) There is unlimited liability for damages caused by serious organizational fault on the part of O&O as well as for damages arising from a missing guaranteed characteristic.

(5) For the breach of an essential contractual duty, O&O is liable for damages normally foreseen in a contract when none of the instances in provisions (2) – (4) applies.

(6) Any further liability for compensation is excluded, specifically excluded is liability without fault.

(7) Liability as defined by the product liability law remains untouched.

(8) If damage can be traced to have arisen through a fault on the part of O&O as well as on the part of yourself, you must have your share of the fault evaluated.

You are responsible for making a standard backup of your data at least once a day. For data loss caused by O&O, O&O is only liable for the expense of duplicating the data on your backup copies that need to be created and for the restoration of data which would have also been lost during a standard backup procedure.

7. Final provisions

(1) You may only balance claims from O&O with indisputable or legally valid claims.

(2) Changes and amendments to this contract must be made in writing. This also applies to changes to this provision.

(3) The contract is subject to German law. The uniform UN purchasing law (CISG) as well as the UNIDROIT Factoring Agreement of Ottawa do not apply.

(4) Any general terms and conditions on your part will not be applied.

(5) In the event you are not a private individual or a resident of the Federal Republic of Germany, we agree that the district court in Berlin will be the competent court for litigation arising from this contract.

8. Contact

If you have any questions concerning the O&O Software License Agreement or wish to speak with O&O, please get in touch with us.

O&O Software GmbH, Am Borsigturm 48, 13507 Berlin, Germany.

Telephone: +49 (0)30 4303 4303, Fax: +49 (0)30 4303 4399

E-Mail info@oo-software.com / sales@oo-software.com, Web www.oo-software.com

SPECIALIZED SECTION

O&O BlueCon

Important note on the Windows PE Start CD

The Microsoft® Windows® Preinstallation Environment software included with this device or software may be used for boot, diagnostic, setup, restoration, installation, configuration, test or disaster recovery purposes only.

NOTE: THIS SOFTWARE CONTAINS A SECURITY FEATURE THAT WILL CAUSE END USER'S SYSTEM TO REBOOT WITHOUT PRIOR NOTIFICATION TO THE END USER AFTER 72 HOURS OF CONTINUOUS USE.

Amendment to: 2. Requirements for application (system requirements)

The software requires Windows 2000 (all Editions), Windows Server 2003 (all Editions), Windows XP (all Editions), Windows Vista (all Editions) or Windows Server 2008 (all Editions) operating systems. Application within the terms of this contract is not achieved without the use of one of these operating systems.

The product at hand can only be employed according to the acquired license. The following license types exist for O&O BlueCon:

O&O BlueCon Admin Edition

You are authorized to install and use the software product on all computers a) in the possession of the company (legal person or natural person(s) in the case of corporations) owning the license and b) all located at a single site. This license is bound to a single natural person and is non-transferable.

O&O BlueCon Tech Edition

You are authorized to install and use the software product on all computers. This includes computers that do not belong to the company owning the license (also known as Service Technician's License). This license is bound to a single natural person and is non-transferable.

O&O BuildPE

Amendment to: 2. Requirements for application (system requirements)

The software requires Windows Vista (all Editions) or Windows Server 2008 (all Editions), Windows 7 (all Editions) or Windows Server 2008 R2 (all Editions) operating systems. Usage within the terms of this contract is not achieved without the application of these operating systems.

O&O CleverCache

Amendment to: 2. Requirements for application (system requirements)

O&O CleverCache Professional Edition

The software requires the Windows XP (all Editions), Windows Vista (all Editions) or Windows 7 (all editions) operating systems. Usage within the terms of this contract is not achieved without the application of these operating systems.

O&O CleverCache Server Edition

The software requires Windows 2000 (all Editions), Windows Server 2003 (all Editions), Windows XP (all Editions), Windows Vista (all Editions), Windows Server 2008 (all Editions), Windows 7 (all Editions) or Windows Server 2008 R2 (all Editions) operating systems. Application within the terms of this contract is not achieved without the use of one of these operating systems.

O&O Defrag

Amendment to: 2. Requirements for application (system requirements)

O&O Defrag Professional Edition

The software requires Windows 2000 Professional or Windows XP (all Editions) Windows Vista (all Editions) or Windows 7 (all Editions) operating systems. Usage within the terms of this contract is not achieved without the application of these operating systems. Control of the program through a network management is not possible.

O&O Defrag Workstation Edition

The software requires Windows 2000 Professional or Windows XP (all Editions) Windows Vista (all Editions) or Windows 7 (all Editions) operating systems. Usage within the terms of this contract is not achieved without the application of these operating systems. The O&O Defrag Workstation Edition may be used on computers with or without the user interface. You are entitled to control this program over the separately obtainable network manager.

O&O Defrag Server Edition

The software requires Windows 2000 (all Editions), Windows Server 2003 (all Editions), Windows XP (all Editions), Windows Vista (all Editions), Windows Server 2008 (all Editions), Windows 7 (all Editions) or Windows Server 2008 R2 (all Editions), operating systems. Usage within the terms of this contract is not achieved without the application of these operating systems. The O&O Defrag Server Edition may be used on computers with or without the user interface. You are entitled to control this program over the separately obtainable network manager.

O&O Defrag Virtual Machine Edition

The O&O Defrag Workstation Edition may be used on computers with or without the user interface. You must own a minimum of one Server Edition to use a Virtual Machine Edition.

O&O DiskImage

Important note on the Windows PE Start CD

This note is only valid for the O&O DiskImage Professional and the Server Edition Start CD. The Microsoft® Windows™ Preinstallation Environment (Windows PE) is not a part of O&O DiskImage Express, Special and the Workstation Edition!

The Microsoft® Windows® Preinstallation Environment software included with this device or software may be used for boot, diagnostic, setup, restoration, installation, configuration, test or disaster recovery purposes only.

NOTE: THIS SOFTWARE CONTAINS A SECURITY FEATURE THAT WILL CAUSE END USER'S SYSTEM TO REBOOT WITHOUT PRIOR NOTIFICATION TO THE END USER AFTER 72 HOURS OF CONTINUOUS USE.

Amendment to: 2. Requirements for application (system requirements)

The O&O DiskImage Express Edition

The software requires Windows 2000 Professional or Windows XP (all Editions) Windows Vista (all Editions) or Windows 7 (all Editions) operating systems. Usage within the terms of this contract is not achieved without the application of these operating systems. Control of the program through a network management is not possible.

O&O DiskImage Professional Edition und Special Edition

The software requires Windows 2000 Professional or Windows XP (all Editions) Windows Vista (all Editions) or Windows 7 (all Editions) operating systems. Usage within the terms of this contract is not achieved without the application of these operating systems. Control of the program through a network management is not possible.

O&O DiskImage Workstation Edition

The software requires Windows 2000 Professional or Windows XP (all Editions) Windows Vista (all Editions) or Windows 7 (all Editions) operating systems. Usage within the terms of this contract is not achieved without the application of these operating systems. The O&O DiskImage Workstation Edition may be used on computers with or without the user interface. You are entitled to control this program over the separately obtainable network manager.

O&O DiskImage Server Edition

The software requires Windows 2000 (all Editions), Windows Server 2003 (all Editions), Windows XP (all Editions), Windows Vista (all Editions), Windows Server 2008 (all Editions), Windows 7 (all Editions) or Windows Server 2008 R2 (all Editions), operating systems. Usage within the terms of this contract is not achieved without the application of these operating systems. The O&O DiskImage Server Edition may be used on computers with or without the user interface. You are entitled to control this program over the separately obtainable network manager.

O&O DiskImage Virtual Machine Edition

The O&O Defrag Workstation Edition may be used on computers with or without the user interface. You must own a minimum of one Server Edition to use a Virtual Machine Edition.

Amendment to: 3. Rights of use, including test versions, unauthorized transfer, and application

Creation and restoration of images

The source computer and each target computer are required to hold licenses, to create and restore images using O&O DiskImage. One license is sufficient under the previously mentioned terms, if the source and the target computer is one non-virtual workstation. Each virtual machine is seen as an independent computer; in other words, each virtual machine needs its own license.

O&O DiskRecovery

Amendment to: 2. Requirements for application (system requirements)

Endbenutzer-Lizenzvertrag 2.7 (EULA)

The software requires Windows 2000 (all Editions), Windows Server 2003 (all Editions), Windows XP (all Editions), Windows Vista (all Editions), Windows Server 2008 (all Editions), Windows 7 (all Editions) or Windows Server 2008 R2 (all Editions), operating systems. Application within the terms of this contract is not achieved without the use of one of these operating systems.

The product at hand can only be employed according to the acquired license. The following license types exist for O&O DiskRecovery:

O&O DiskRecovery Personal Edition

You are authorized to install and use the software product on only one computer. This should be used wholly in conjunction with all hardware in your possession, i.e. this license may not be used to provide a service to a third party. Other limitations may apply in the software itself. Please consult the software documentation for more information on these limitations.

O&O DiskRecovery Admin Edition

You are authorized to install and use the software product on all computers

a) in the possession of the company (legal person or natural person(s) in the case of corporations) owning the license and b) all located at a single site. This should be used wholly in conjunction with all hardware in your possession, i.e. this license may not be used to provide a service to a third party. This license is bound to a single natural person and is non-transferable.

O&O DiskRecovery Tech Edition

You are authorized to install and use the software product on all computers. This includes computers that do not belong to the company owning the license (also known as Service Technician's License). This license is bound to a single natural person and is non-transferable.

O&O DiskStat

Amendment to: 2. Requirements for application (system requirements)

O&O DiskStat Professional Edition

The software requires Windows 2000 Professional or Windows XP (all Editions) Windows Vista (all Editions) or Windows 7 (all Editions) operating systems. Usage within the terms of this contract is not achieved without the application of these operating systems.

O&O DiskStat Workstation Edition

The software requires Windows 2000 Professional or Windows XP (all Editions) Windows Vista (all Editions) or Windows 7 (all Editions) operating systems. Usage within the terms of this contract is not achieved without the application of these operating systems. The O&O DiskStat Workstation Edition may be used on computers with or without the user interface. You are entitled to control this program over the separately obtainable network manager.

O&O DiskStat Server Edition

The software requires Windows 2000 (all Editions), Windows Server 2003 (all Editions), Windows XP (all Editions), Windows Vista (all Editions), Windows Server 2008 (all Editions), Windows 7 (all Editions) or Windows Server 2008 R2 (all Editions), operating systems. Application within the terms of this contract is not achieved without the use of one of these operating systems.

O&O DiskStat Virtual Machine Edition

The O&O Defrag Workstation Edition may be used on computers with or without the user interface. You must own a minimum of one Server Edition to use a Virtual Machine Edition.

O&O DriveLED

Amendment to: 2. Requirements for application (system requirements)

O&O DriveLED Professional Edition

The software requires Windows XP (all Editions), Windows Vista (all Editions) or Windows 7 (all Editions) operating systems. Usage within the terms of this contract is not achieved without the application of these operating systems. Control of the program through a network management is not possible.

O&O DriveLED Workstation Edition

The software requires Windows XP (all Editions), Windows Vista (all Editions) or Windows 7 (all Editions) operating systems. Usage within the terms of this contract is not achieved without the application of these operating systems. The O&O DriveLED Workstation Edition may be used on computers with or without the user interface. You are entitled to control this program over the separately obtainable network manager.

O&O DriveLED Server Edition

The software requires Windows 2000 (all Editions), Windows Server 2003 (all Editions), Windows XP (all Editions), Windows Vista (all Editions), Windows Server 2008 (all Editions), Windows 7 (all Editions) or Windows Server 2008 R2 (all Editions) operating systems. Usage within the terms of this contract is not achieved without the application of these operating systems. The O&O DriveLED Server Edition may be used on computers with or without the user interface. You are entitled to control this program over the separately obtainable network manager.

O&O DriveLED Virtual Machine Edition

The O&O Defrag Workstation Edition may be used on computers with or without the user interface. You must own a minimum of one Server Edition to use a Virtual Machine Edition.

O&O Enterprise Management Console

Important note on the Microsoft SQL Server

This product uses the Microsoft SQL Server or Microsoft SQL Server Express Edition. To the extent that these programs are part of the installation of this product, the terms of their licensing related to the use of this software will also apply to the terms of this agreement.

The use of Microsoft SQL Server Express Edition is free of charge in conjunction with this product. The purchase of licenses for O&O Enterprise Management Console and related products is separate from any possible purchase of SQL Server products.

Amendment to: 2. Requirements for application (system requirements)

The software requires Windows 2000 (all Editions), Windows Server 2003 (all Editions), Windows XP (all Editions), Windows Vista (all Editions), Windows Server 2008 (all Editions), Windows 7 (all Editions) or Windows Server 2008 R2 (all Editions) operating systems. Usage within the terms of this contract is not achieved without the application of these operating systems.

O&O EventViewer

Amendment to: 2. Requirements for application (system requirements)

O&O EventViewer Workstation Edition

Endbenutzer-Lizenzvertrag 2.7 (EULA)

The software requires Windows 2000 Professional or Windows XP (all Editions) Windows Vista (all Editions) or Windows 7 (all Editions) operating systems. Usage within the terms of this contract is not achieved without the application of these operating systems. The O&O EventViewer Workstation Edition may be used on computers with or without the user interface. You are entitled to control this program over the separately obtainable network manager.

O&O EventViewer Server Edition

The software requires Windows 2000 (all Editions), Windows Server 2003 (all Editions), Windows XP (all Editions), Windows Vista (all Editions), Windows Server 2008 (all Editions), Windows 7 (all Editions) or Windows Server 2008 R2 (all Editions), operating systems. Usage within the terms of this contract is not achieved without the application of these operating systems.

O&O EventViewer Virtual Machine Edition

The O&O Defrag Workstation Edition may be used on computers with or without the user interface. You must own a minimum of one Server Edition to use a Virtual Machine Edition.

O&O ISOBoot

Important note for working with O&O ISOBoot

The program overwrites the target data volume (these include among other things rewritable CDs or USB sticks). Please make sure that no data you need is left on the target data volume. Overwriting data cannot be reversed!

O&O formally declares that it is not responsible for damages arising from the improper use of O&O ISOBoot.

Amendment to: 2. Requirements for application (system requirements)

The software requires the Windows 2000 (all Editions), Windows Server 2003 (all Editions), Windows XP (all Editions), Windows Vista (all Editions), Windows 7 (all Editions) or Windows Server 2008 (all Editions) operating systems. Application within the terms of this contract is not achieved without the use of one of these operating systems.

Amendment to: 4. Payment

O&O demands no fee for the use of this license In addition, a fee for this license and this program may not be demanded by any Third Parties, unless this is done with the expressed approval of O&O. When in doubt, please get in touch with us. You can find our contact data at the end of this license agreement.

O&O MediaRecovery

Amendment to: 2. Requirements for application (system requirements)

The software requires Windows 2000 (all Editions), Windows Server 2003 (all Editions), Windows XP (all Editions), Windows Vista (all Editions), Windows Server 2008 (all Editions), Windows 7 (all Editions) or Windows Server 2008 R2 (all Editions), operating systems. Usage within the terms of this contract is not achieved without the application of these operating systems.

O&O PartitionManager

Important note on the Windows PE Start CD

The Microsoft® Windows® Preinstallation Environment software included with this device or software may be used for boot, diagnostic, setup, restoration, installation, configuration, test or disaster recovery purposes only.

NOTE: THIS SOFTWARE CONTAINS A SECURITY FEATURE THAT WILL CAUSE END USER'S SYSTEM TO REBOOT WITHOUT PRIOR NOTIFICATION TO THE END USER AFTER 72 HOURS OF CONTINUOUS USE.

Amendment to: 2. Requirements for application (system requirements)

O&O PartitionManager Professional Edition

The software requires Windows 2000 Professional or Windows XP (all Editions) Windows Vista (all Editions) or Windows 7 (all Editions) operating systems. Usage within the terms of this contract is not achieved without the application of these operating systems.

O&O PartitionManager Server Edition

The software requires Windows 2000 (all Editions), Windows Server 2003 (all Editions), Windows XP (all Editions), Windows Vista (all Editions), Windows Server 2008 (all Editions), Windows 7 (all Editions) or Windows Server 2008 R2 (all Editions), operating systems. Usage within the terms of this contract is not achieved without the application of these operating systems.

O&O RegEditor

Important note for working with the Microsoft Windows Registry

Before making changes to the Microsoft Windows Registry (in the following Registry), you should prepare a backup copy of the Registry and ensure that you'll be able to restore the Registry if a problem should arise.

O&O formally declares that it is not responsible for damages arising from the improper use of O&O RegEdit. Changes to the Registry should only be made by experienced users who are aware of the consequences of such changes. A defective Registry can influence the entire stability of the system and lead to a crash of the computer or make it unable to start. This can further lead to loss of data.

Amendment to: 2. Requirements for application (system requirements)

The software requires Windows 2000 (all Editions), Windows Server 2003 (all Editions), Windows XP (all Editions), Windows Vista (all Editions) or Windows Server 2008 (all Editions) operating systems. Application within the terms of this contract is not achieved without the use of one of these operating systems.

Amendment to: 4. Payment

O&O demands no fee for the use of O&O RegEditor. In addition, a fee for this license and this program may not be demanded by any Third Parties, unless this is done with the expressed approval of O&O. When in doubt, please get in touch with us. You can find our contact data at the end of this license agreement.

O&O RescueBox

Important note on the Windows PE Start CD

The Microsoft® Windows® Preinstallation Environment software included with this device or software may be used for boot, diagnostic, setup, restoration, installation, configuration, test or disaster recovery purposes only.

NOTE: THIS SOFTWARE CONTAINS A SECURITY FEATURE THAT WILL CAUSE END USER'S SYSTEM TO REBOOT WITHOUT PRIOR NOTIFICATION TO THE END USER AFTER 72 HOURS OF CONTINUOUS USE.

Amendment to: 2. Requirements for application (system requirements)

The software requires Windows 2000 (all Editions), Windows Server 2003 (all Editions), Windows XP (all Editions), Windows Vista (all Editions) or Windows Server 2008 (all Editions) operating systems. Application within the terms of this contract is not achieved without the use of one of these operating systems.

The product at hand can only be employed according to the acquired license. The following license types exist for O&O RescueBox:

O&O RescueBox Personal Edition

You are authorized to install and use the software product on only one computer. This should be used wholly in conjunction with all hardware in your possession, i.e. this license may not be used to provide a service to a third party. Other limitations may apply in the software itself. Please consult the software documentation for more information on these limitations.

O&O RescueBox Admin Edition

You are authorized to install and use the software product on all computers a) in the possession of the company (legal person or natural person(s) in the case of corporations) owning the license and b) all located at a single site. This should be used wholly in conjunction with all hardware in your possession, i.e. this license may not be used to provide a service to a third party. This license is bound to a single natural person and is non-transferable.

O&O RescueBox Tech Edition

You are authorized to install and use the software product on all computers. This includes computers that do not belong to the company owning the license (also known as Service Technician's License). This license is bound to a single natural person and is non-transferable.

O&O SafeErase

Amendment to: 2. Requirements for application (system requirements)

The software requires Windows 2000 (all Editions), Windows Server 2003 (all Editions), Windows XP (all Editions), Windows Vista (all Editions), Windows Server 2008 (all Editions), Windows 7 (all Editions) or Windows Server 2008 R2 (all Editions), operating systems. Usage within the terms of this contract is not achieved without the application of these operating systems.

O&O UnErase

Amendment to: 2. Requirements for application (system requirements)

The software requires Windows Server 2003 (all Editions), Windows XP (all Editions), Windows Vista (all Editions), Windows Server 2008 (all Editions), Windows 7 (all Editions) or Windows Server 2008 R2 (all Editions) operating systems. Application within the terms of this contract is not achieved without the use of one of these operating systems.

The product at hand can only be employed according to the acquired license. The following license types exist for O&O UnErase:

O&O UnErase Personal Edition

You are authorized to install and use the software product on all computers a) in the possession of the company (legal person or natural person(s) in the case of corporations) owning the license and b) all located at a single site. This should be used wholly in conjunction with all hardware in your possession, i.e. this license may not be used to provide a service to a third party. This license is bound to a single natural person and is non-transferable.

O&O UnErase Admin Edition

Endbenutzer-Lizenzvertrag 2.7 (EULA)

You are authorized to install and use the software product on all computers a) in the possession of the company (legal person or natural person(s) in the case of corporations) owning the license and b) all located at a single site. This should be used wholly in conjunction with all hardware in your possession, i.e. this license may not be used to provide a service to a third party. This license is bound to a single natural person and is non-transferable.

O&O UnErase Tech Edition

You are authorized to install and use the software product on all computers. This includes computers that do not belong to the company owning the license (also known as Service Technician's License). This license is bound to a single natural person and is non-transferable.