

© O&O software

O&O BlueCon



Table of contents

About O&O BlueCon	3
System requirements	4
Explaining the main functions	5
Application scenarios	7
Start O&O BlueCon from a bootable disk	11
O&O FileExplorer	15
O&O UpdateRemover	17
O&O DeviceManager	18
O&O Check & Repair	20
O&O EventViewer	21
O&O RegEditor	22
O&O UserManager	26
Microsoft PowerShell	29
Command Index	31
O&O SystemInfo	39
Control Panel	41
Web Browser	44
O&O Notepad	45
O&O Calc	46
End user license agreement	47

About O&O BlueCon

Thank you for the trust you have placed in our product. We are happy to introduce you to O&O BlueCon.

O&O BlueCon provides a collection of strong tools for users, administrators, and service technicians so that damaged Windows systems can be made operational again without any prior installation. The Windows based user interface makes it so easy to use O&O BlueCon that less time is needed for training.

The following chapters will explain the best way of using O&O BlueCon and show how you can get started.

We hope you will enjoy using O&O BlueCon and the products included. Should you have any questions or suggestions about either our products or licensing, please get in touch with us. We will be very happy to help you further.

Your O&O Software Customer Center

<http://www.oo-software.com>

Note:

The following products contain a special program that you can access over the help function within the program:

- [O&O DiskImage](#) (in certain O&O BlueCon licenses and Editions)
- [O&O SafeErase](#)
- [O&O DiskRecovery](#)
- [O&O PartitionManager](#)

System requirements

- 4 GB RAM recommended for the base functionality of O&O BlueCon
- Bootable CD or DVD drive
- To create a start medium, O&O BuildPE requires Windows 11, Windows 10, Windows Server 2019 or Windows Server 2022 (all Editions)
- The created start medium supports Windows® 8.1, 10, 11, Windows Server 2012 R2, Windows Server 2016, Windows Server 2019 and Windows Server 2022 (all Editions)
- Windows file systems: FAT12/FAT16/FAT32/NTFS4/NTFS5
- You need Microsoft Internet Explorer 6.0 or higher for correct functioning of O&O BlueCon

Note:

To start the O&O BlueCon CD, you need to have a bootable CD drive. Eventually you must change the BIOS settings for your computer. For more information please consult the documentation of your motherboard manufacturers.

Explaining the main functions

A total Windows system crash is every administrator's worst nightmare. If a new start or restoring the old settings doesn't help then it is mostly too late.

O&O BlueCon provides a whole range of refined tools for solving problems. A particular highlight is the ability to start O&O BlueCon from CD ROM with no prior installation. This enables you to access systems that cannot be started anymore from the hard disk. This prevents data being damaged by additional or new installations of Windows.

There are many situations in which O&O BlueCon can help you. We have listed the most common for you here to give you an idea of O&O BlueCon's performance range:

Windows-based interface

With O&O BlueCon the user has a task bar, Start menu and all appropriate program buttons at their disposal. This enables access without entering command lines and with just a few simple mouse clicks. Navigation, as in Windows, can be done with the mouse. For execution, editing or creation of basic files users have a command-line editor at their fingertips.

Backup data from defective systems

Copy data from defective systems to external storage media. You can access your system without having to write on it – this gives you the security of knowing no data will be lost. Simply start the O&O BlueCon CD and access all partitions! (See O&O FileExplorer) (see O&O FileExplorer)

Disable defective drivers and system services

Amongst the most common causes of a system crash are defective drivers or system services. These are loaded before the user can log on, giving them no opportunity to remove or replace them. With O&O BlueCon you can simply disable the driver or service, or replace them with a new version! (see O&O DeviceManager) (See O&O DeviceManager)

Edit the Registry

The registry is the central depot where all system and user settings are saved. Any errors here can prevent your system from running correctly. False driver or service parameters can also cause severe problems. The O&O RegEditor enables you to change or correct entries in the registry. (See O&O RegEditor)

Gain access without an administrator password

You cannot log on to your Windows system without a password. If you forget or lose this password you have to install Windows anew in order to gain system access. O&O BlueCon provides you with a tool to delete or change passwords for local user accounts so that you regain access to their systems. (See O&O UserManager)

Securely delete data

With O&O BlueCon, the technology of O&O SafeErase will let you delete data, partitions, hard disks or entire systems beyond any chance of recovery. Using five different methods of deletion it is

possible to overwrite data up to 35 times!

Data recovery included

O&O DiskRecovery, our data rescue specialist, is integrated into O&O BlueCon to help restore data that was accidentally deleted. This lets you recover data in almost every data loss scenario caused by software, be that as a result of formatted disks, accidental deletion, or viral attack. With O&O DiskRecovery, data recovery was never so easy, quick and affordable.

Data imaging with O&O DiskImage*

You can start O&O DiskImage without installation directly from the O&O BlueCon CD. If you have problems with your operating systems, you could for instance, restore a previously created image, and afterwards continue using your computer as usual.

In case of data loss, O&O DiskImage can also be used to create a 1:1 image of the affected disk (forensic image). This image can then be mounted as a drive in Windows and you can try to rescue data using our O&O data rescue program. The advantage here is that the original disk will not be directly needed and so remains available for additional treatment, such as sending it to a data rescue laboratory.

***Note:**

O&O DiskImage is included in certain licenses and Editions of O&O BlueCon. For questions concerning our licensing model, please contact the O&O Customer Center. We will be happy to help you further.

Remove/uninstall updates that were installed by Windows

With this new function you can remove/uninstall updates that were installed by Windows. The O&O UpdateRemover offers much more than the in-built Windows function. This only shows and removes the "last update", whereas the O&O UpdateRemover is more detailed with a full list of updates installed and available for removal. It is also still available even if the Windows rescue environment no longer starts!

O&O BlueCon Assistant

The new O&O Bluecon Assistant provides you at the start with a clear overview of all the most important functions within the program. With just one click, you can access these functions without having to go through a menu or navigation. This not only lets you see at a glance the main features that O&O BlueCon has to offer, it also saves you valuable time.

Application scenarios

The following are examples for quickly solving problems by using the programs in O&O BlueCon.

Forgotten password

A user forgot his system password. He cannot remember it at all. You being the Administrator are asked to help.

Solution:

- 1. Start O&O BlueCon.
- 2. Open the O&O UserManager under **Start/Programs/Administrative Tools/UserManager**.
- 3. Click on the icon **User accounts**.
- 4. Select the user who forgot his password from the list.
- 5. Click **Change password** and follow the directions in the dialogue window.
- 6. End BlueCon and restart your computer. After boot up, the user can login with a new password.

Important!

If you want to change passwords with O&O BlueCon, you won't have access to encrypted files. Coding cannot be decrypted after the password changed!

Note:

O&O UserManager can only manage local user accounts. No changes can be made to a domain controller.

Access data from a computer that can no longer boot

You need data from your computer but it is no longer able to boot. Before experimenting with system rescue attempts, you can copy the most important data from your hard disk onto an external disk (e.g. USB stick or USB hard disk) using the O&O FileExplorer.

Solution:

- 1. Connect an external storage medium such as a USB stick or hard disk to your computer.
- 2. Start the O&O BlueCon CD and open the **O&O FileExplorer** it via **Start/Programs**.
- 3. Scan the hard disk for files and folders.
- 4. Copy the files on the external storage media.

System crashes after updates

You installed a new Windows update. Your system crashes immediately or is no longer able to start.

Solution:

Start **O&O BlueCon**

Open via **Start/Programs/Administrative tools/O&O UpdateRemover**

Updates will be loaded

Select the last installed update and click **Remove update**

The update will now, if possible, be uninstalled

Restart the computer

Completely delete data

If you sell, give away, or discard your computer, it is very easy for your personal or business data to fall into the wrong hands. Windows does not completely delete data. Even formatting a hard disk is not enough to delete your data. You don't have access to it right away, but unauthorized access is still possible using special reconstructing software.

O&O SafeErase deletes your data using processes which are recommended by the US Department of Defence or the Federal Office for Information Security of Germany.

Solution:

- 1. Start O&O BlueCon.
- 2. Open **Start/Programs/Data security/O&O SafeErase**.
- 3. Select the desired activity in the O&O-SafeErase Assistant and follow the directions of the dialogue window.

Note:

Please bear in mind that data deleted with O&O SafeErase cannot be restored! Please make sure that before you delete anything, that you really would like to delete the data or that you have saved a back-up copy in another location (security copy).

Note:

Detailed information to the secure deletion of data is available in the program Help of O&O SafeErase.

Reconstruct deleted data

A user deleted important files or folders by accident. In addition, he even emptied the Recycle bin. Since he really needs the data, it needs to be restored quickly.

Solution:

- 1. Start O&O BlueCon.
- 2. Start O&O DiskRecovery under **Start/Programs/File Recovery/O&O DiskRecovery**.
- 3. Click **Next** in the data recovery dialog to reach the selection of drives.
- 4. Now select the drive where you want to restore data. If you are not sure, select all drives.
- 5. Confirm the default settings for the data rescue on the next page. Afterwards, you can start your data rescue.
- 6. Select the files you want to restore from the folder and details list. To be totally sure, you can also select all. The preview function lets you see the contents of certain file types (Graphics/Images). This function is enabled with **Preview**.
- 7. You will then get to the selection of the target folder of the restoration. Please make sure that the target folder is not located on one of the drives where recovery is taking place.
- 8. In the next step the files will be restored. After this is complete, you will be able to view a status report of all actions taken up to this point. You can now end O&O DiskRecovery and navigate to the target folder with your rescued data.

Note:

Please make sure you have enough disk space for the recovered data.

Note:

More detailed information about data recovery can be found in the O&O DiskRecovery Help.

Change system partitions

If your hard disk is only divided into one partition, you can assume to find your system files as well as your private data on it. If you want to create a system and a data partition, you must start O&O PartitionManager directly from the Start CD. Shrink the partition to the minimal size (based on the amount of data), and use the area that's now free to create the desired number of partitions. Please follow the steps below:

- 1. Start O&O PartitionManager under **Start/Programs/Administrative Tools/O&O PartitionManager**.
- 2. Right-click the selected system partition and then click **Change location and size**. In the dialogue box, go to **Partition size** and set the minimal size. The space you now have available will be subsequently displayed in the view of the disk.
- 3. Generate a **New partition** by right-clicking on the free area.
- 4. If you want more subdivisions, then set the parameters for size in a way that there will still be space for additional partitions. In the dialogue you'll also be able to perform additional functions such as assigning drive letters or the type of drive.
- 5. You will then be able to create the next partition in the same way. The new partition will be created after you've confirmed your selections.

Important:

If the application is unsuccessful, there is a risk that your data will be either partially or fully lost. That's why you should backup all the original partition's data onto a removable medium or another

partition.

Tip:

You can mark the new primary partition as active by right-clicking. This setting is important if you have or want to install one or more operating systems on this hard disk. The setting specifies that the bootloader of the operating system is written on this partition, and that it should be started from there. If you have several operating systems installed on one hard disk, the operating system which was installed last will always start. Only one "active" primary partition can exist on one hard disk. If you are not sure please do not make any changes and keep the default settings.

Start O&O BlueCon from a bootable disk

Note:

A minimum of 1GB RAM is required for starting O&O BlueCon with the bootable disk (boot medium).

Create or start the boot environment

Here you can find out more about creating the O&O BlueCon boot environment: [Create O&O BlueCon boot environment with O&O BuildPE](#).

No installation is necessary for O&O BlueCon. O&O BlueCon starts directly from the boot medium. You need the boot medium (CD/DVD or USB stick) when, for example, Windows is no longer able to start or you want to make changes to the system partition. To start, proceed as follows:

Start from CD/DVD

- 1. Make sure your computer can be started from the CD. You can place the appropriate settings in BIOS. Further information can be obtained from your motherboard manufacturer.
- 2. Insert the O&O BlueCon Start CD/DVD in your computer's optical drive.
- 3. Restart the computer. Follow the prompts for starting from CD/DVD.

- 4. The system settings will then appear in the window. Select a language and region.
- 5. At the next stage you can load drivers for those devices where no drivers under Windows PE were initially found, see also chapter [Control Panel/Load Drivers](#).
- 6. O&O BlueCon will be started after confirmation of the licensing provisions.

Start from USB stick

To start from a USB stick, you'll usually have to change the boot sequence in your computer's boot menu. Alternatively, you can also configure appropriate settings in the BIOS. You can find out more about this from your motherboard's manufacturer.

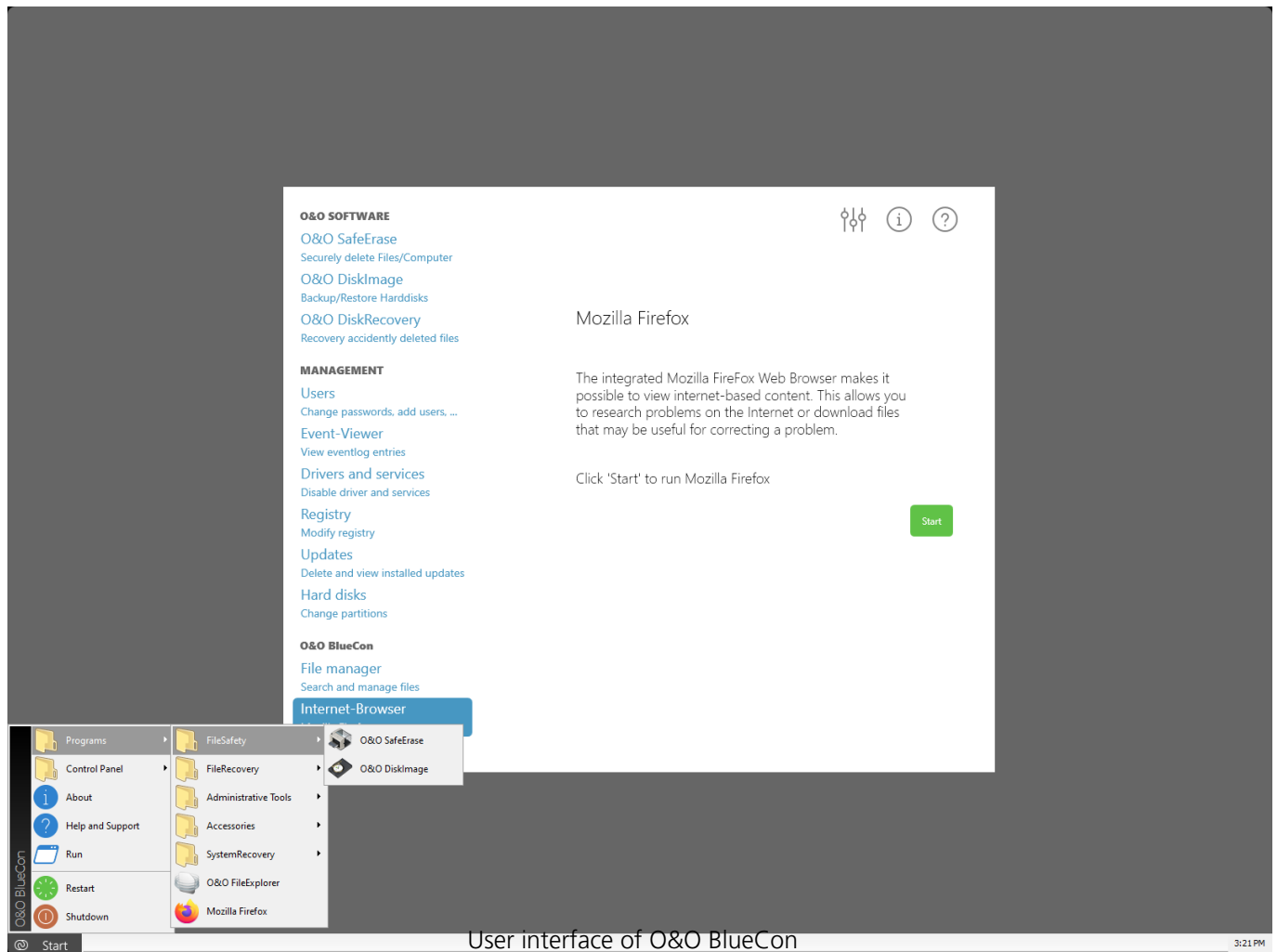
- 1. Open the boot menu while the computer is booting.
- 2. You can change the sequence in the menu if you place the USB entry (removable devices) at the beginning.
- 3. After this, your computer will recognize the USB stick as a boot medium and will start O&O BlueCon from there.



Start programs from O&O BlueCon

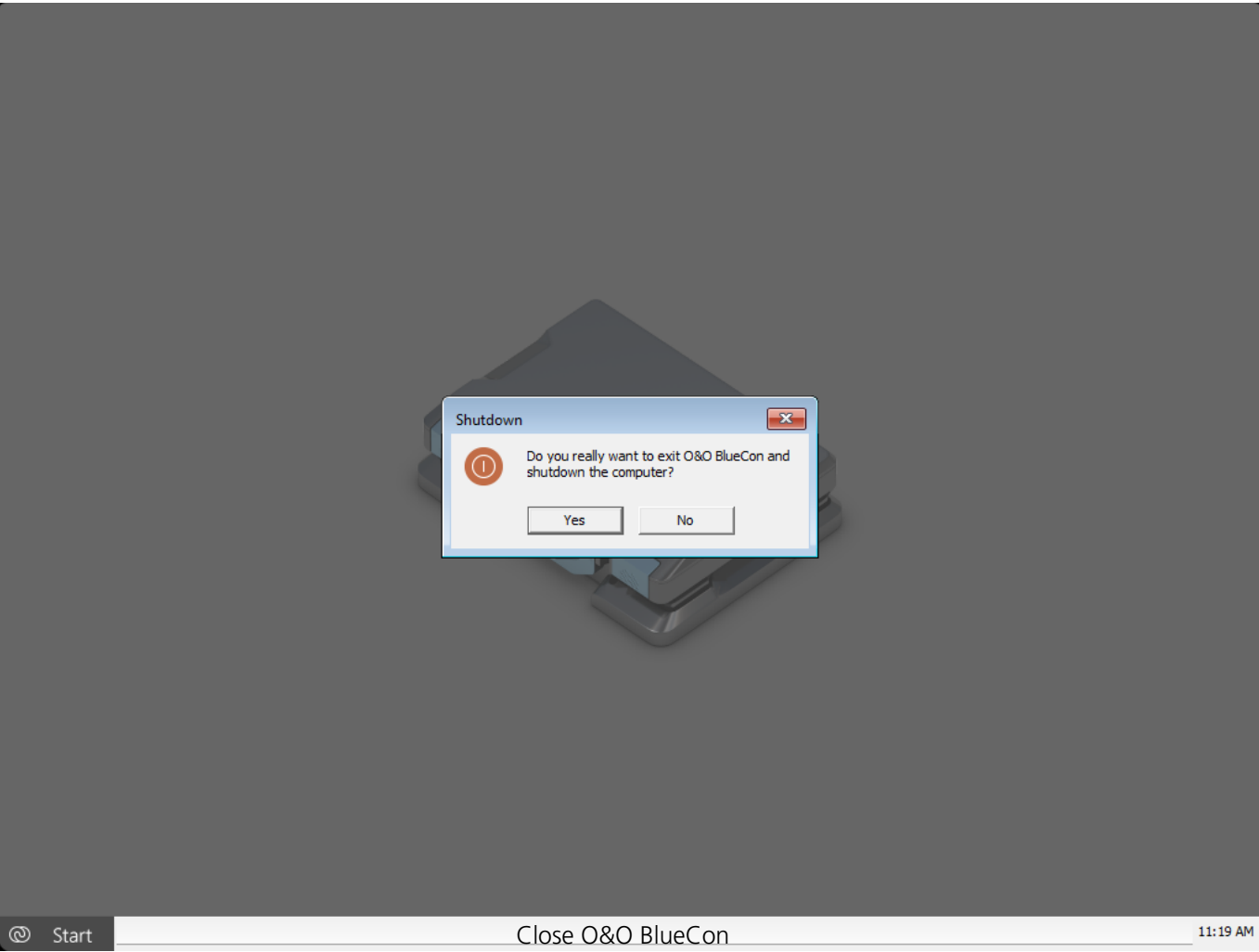
When starting O&O BlueCon, you will be asked to accept the license agreement. After that, you have the option of making customized settings for the system. In most cases it is not necessary to change anything. O&O BlueCon will automatically select the best settings for your system on its own.

In the Start menu under **Programs** you will find all programs for restoration, management, security, and data rescue. You can also consult the online Help. Simply click **Help and Support** in the Start menu.



Close O&O BlueCon

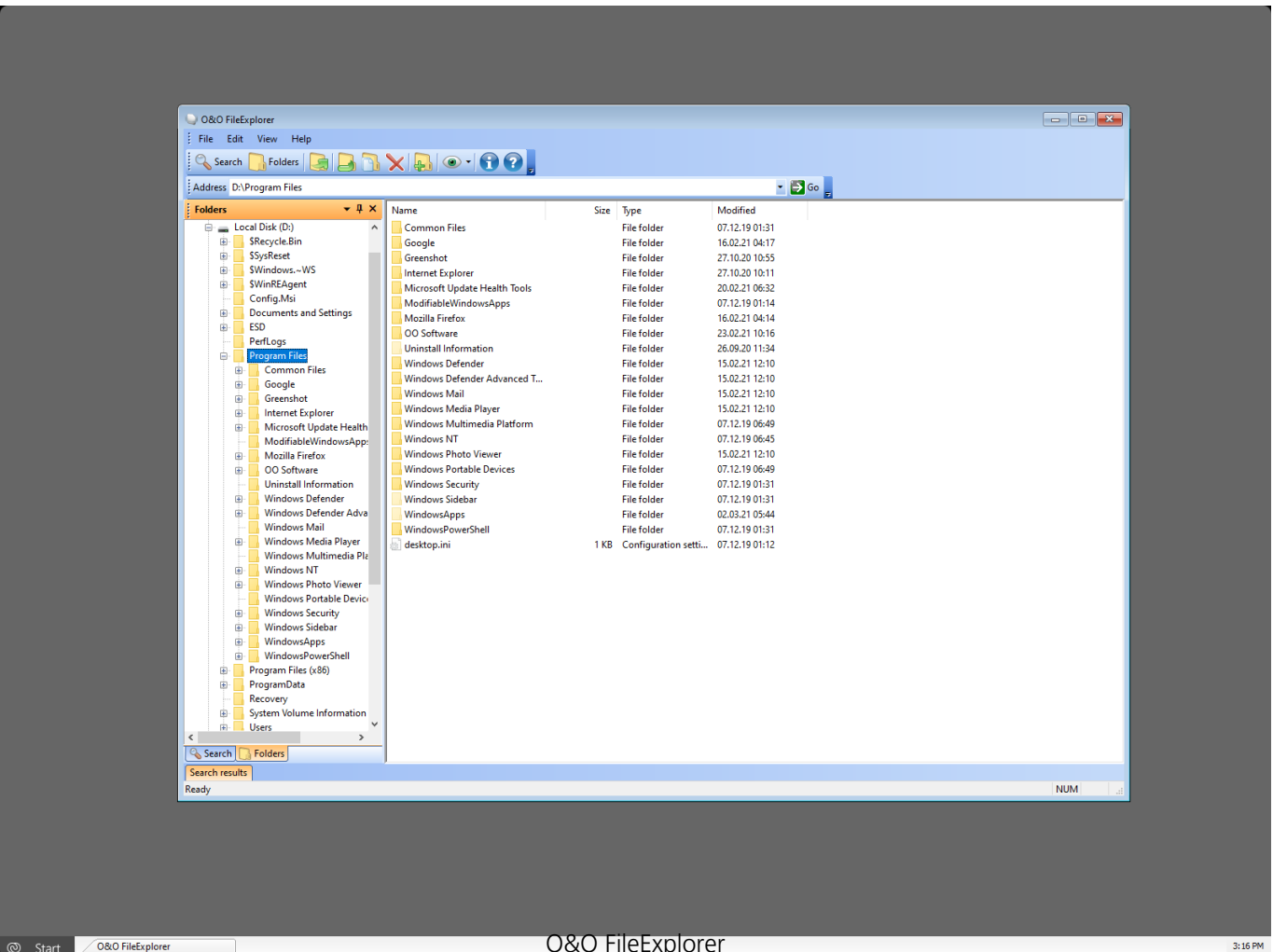
To close O&O BlueCon, click Start and select either Restart. (O&O BlueCon is closed and the computer is restarted) or **Shut down** (O&O BlueCon is closed and the computer shut down).



O&O FileExplorer

If your system is damaged, you have practically no chance of accessing your files to back them up. O&O FileExplorer allows you to navigate through your computers' entire file system.

- To open O&O FileExplorer click **Start/Programs** and then **FileExplorer**.



Search for files and folders

- 1. To look for certain files and folders in your computer, click **Search**.
- 2. Enter the required file or folder name. You can refine your search by entering further search criteria in the Search menu.

Copy, move or delete files and folders

Files and folders can be copied, moved or deleted over the context menu. Alternatively, you can also use the appropriate instructions in the Toolbar.

Note:

If you connected external storage media to your computer after booting O&O FileExplorer, you need to restart O&O FileExplorer so that all connected drives will be recognized.

Build a network drive connection

A special feature of O&O FileExplorer is the direct connection of network drives to other servers.

- 1. In the **O&O FileExplorers** file menu, click **Network Drive Connection**.
- 2. A free drive-letter will be selected and you can enable the UNC Path.
- 3. A registration field for the target system will appear and you should have an account for it.

O&O FileExplorer does not offer a separation of network drives. This is rarely needed, but can be done under **Start/Run** with the command "NET USE : /DELETE".

View drive/file properties and NTFS access permissions

Access permissions

To view access permissions, select **Permissions** from either the file menus or respective context menu.

File properties

File properties can be managed over the context menu. File information can be read, file attributes changed or NTFS rights managed.

Warning!

Removing NTFS Rights can prevent access to files. A later addition of NTFS permissions is not possible under O&O BlueCon.

Drive properties

If you right-click a drive under **Properties** you will find information about its total capacity as well as information regarding the drive's free and used capacity.

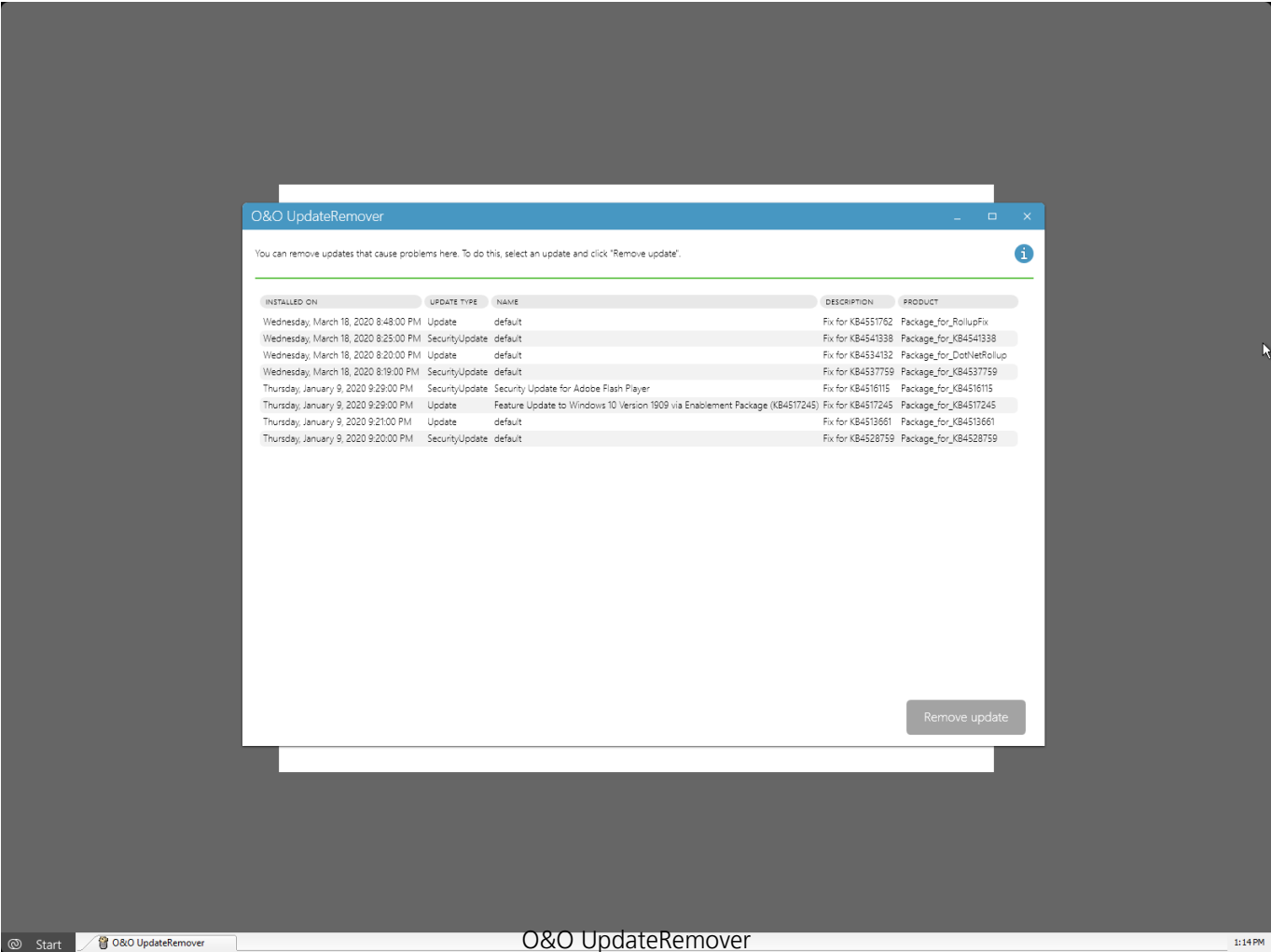
O&O UpdateRemover

Remove updates

Whenever a Windows update causes problems, especially if the computer is no longer able to start, you can use O&O UpdateRemover to remove the defective update.

Once you start O&O UpdateRemover, it begins detecting Windows updates. This might take some time, depending on the age of the computer. After all the updates are found, you can select the one you want to remove by clicking on it. You can then select **Remove update** at the lower right and in the lower section, you'll be able to see the progress of the deletion.

While deletion of the update can be stopped, this will not result in the update being reinstalled. The current action will be closed and the system restored to a pristine condition. In certain cases deletion of the update must be completed in order for the system to remain bootable. If you've deleted an update by mistake, you can reinstall it under Windows.



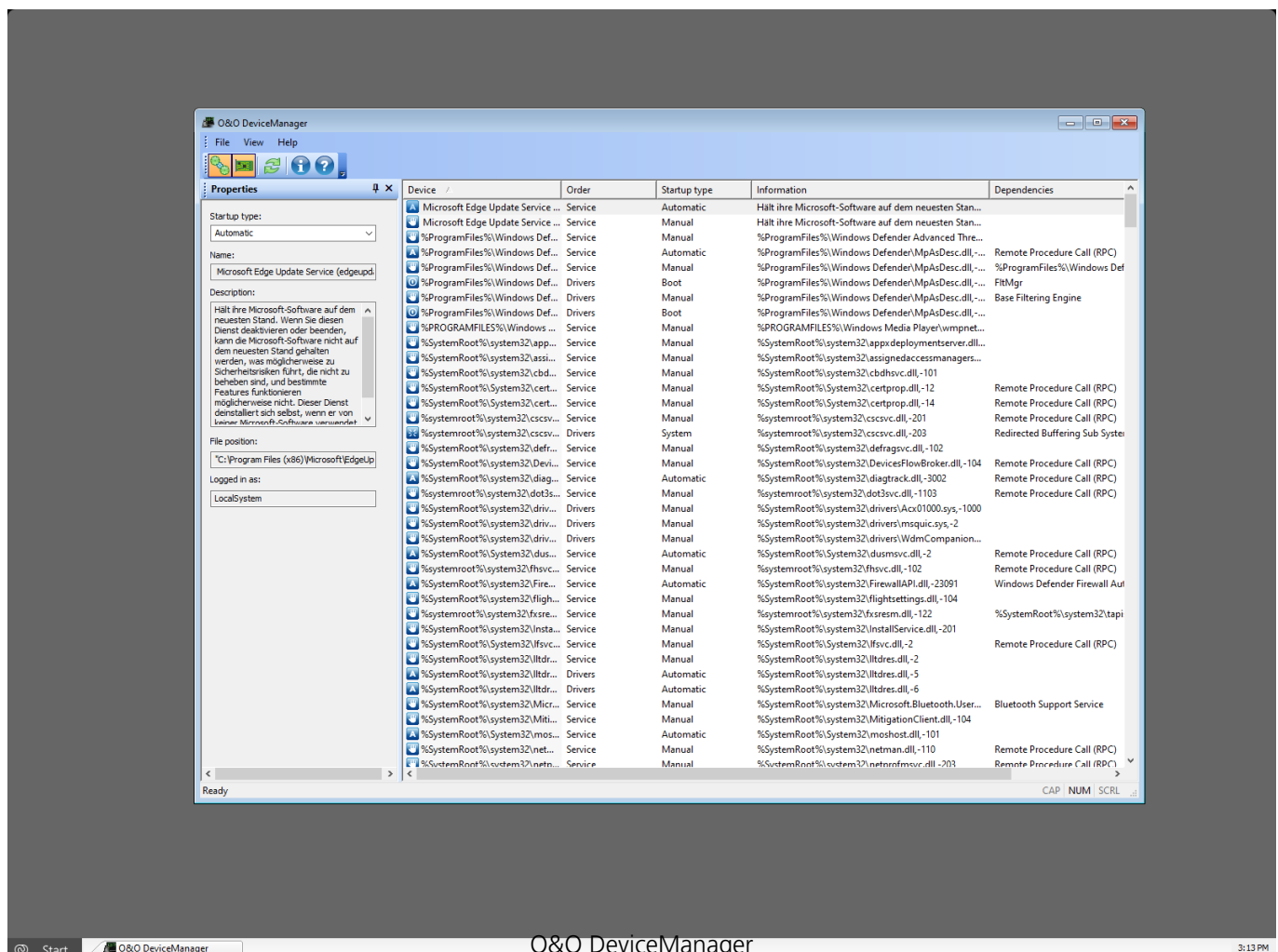
O&O DeviceManager

The O&O DeviceManager provides the best possible overview of the installed hardware. It is organized in driver and service management.

- To open the Driver Management function in the O&O DeviceManagement, click **Start/Programs/AdministrativeTools** and then **DriverManager**.
- To open the Service Management function in the O&O DeviceManagement, click **Start/Programs/AdministrativeTools** and then **ServiceManager**.

Driver management

Driver management can influence the start and stop time of the hard and software drivers. This function is especially helpful if missing drivers prevent the system from starting.



- Select the symbol for the driver management.
- You can now select a driver from the list. You have several options for setting the start time of each driver:

- **Disabled:** Sets the start mode into disabled. The driver is not loaded. To disable a driver, select it and click **disable** under start time.
- **Boot:** Sets the start mode to boot. The device boots before all others. The driver is loaded and started while Windows is booting.
- **System:** Sets the start mode to system. The device starts after all boot devices have started. The driver is started at a random time by the system. This does not have to be during the system start.
- **Auto:** Sets the start mode to automatic. The device starts after all boot and system devices have been started.
- **Manual:** Sets the start mode to manual. The device does not start automatically. The user can start it manually after login.

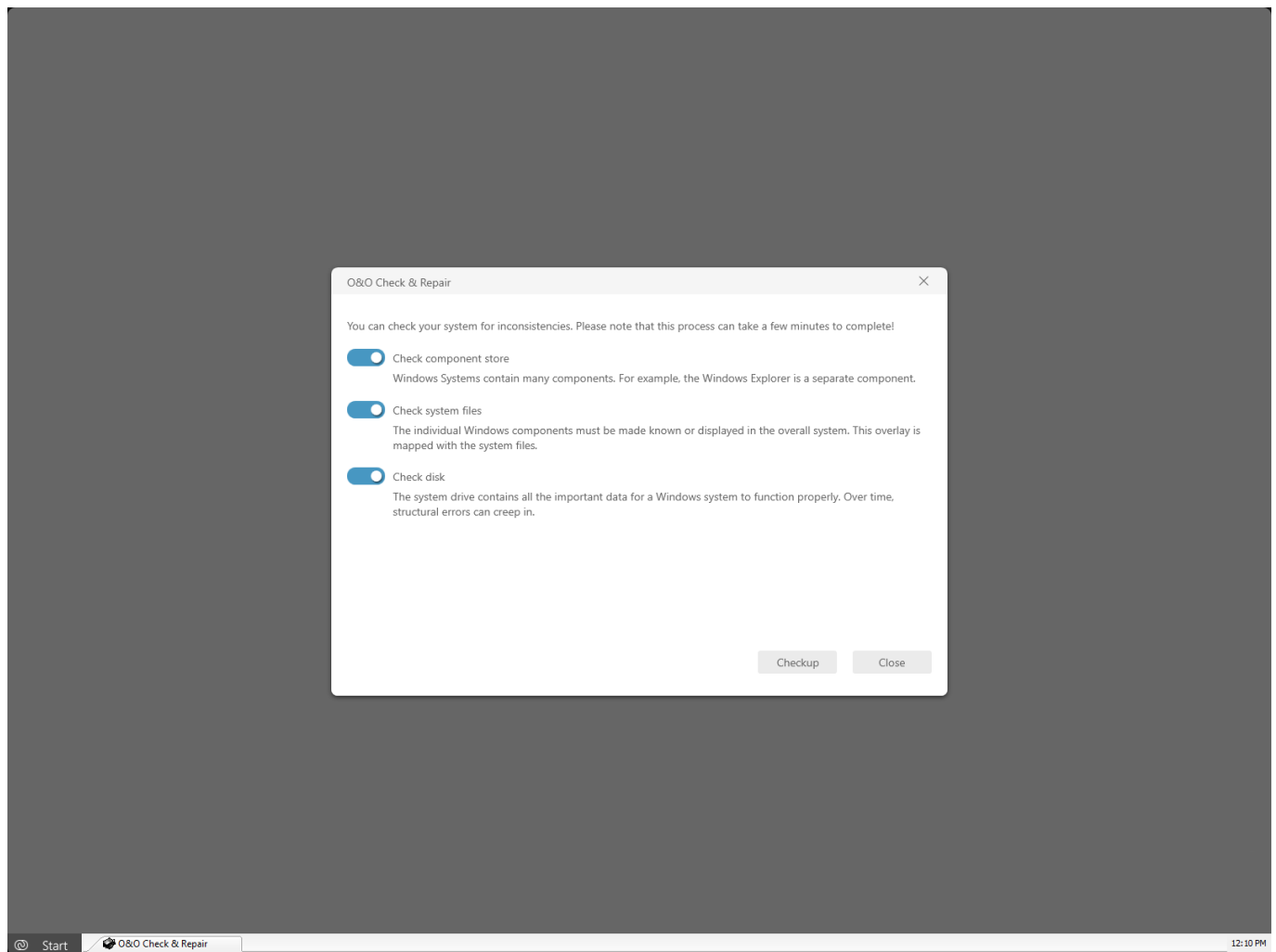
Service management

You can find Services next to the Driver Management icon in the toolbar. The Service Management function in the O&O DeviceManager can customize the startup type of Windows services. This means defective or superfluous services can be disabled, thereby making a new system start possible. Proceed in the same way as with Driver Management.

O&O Check & Repair

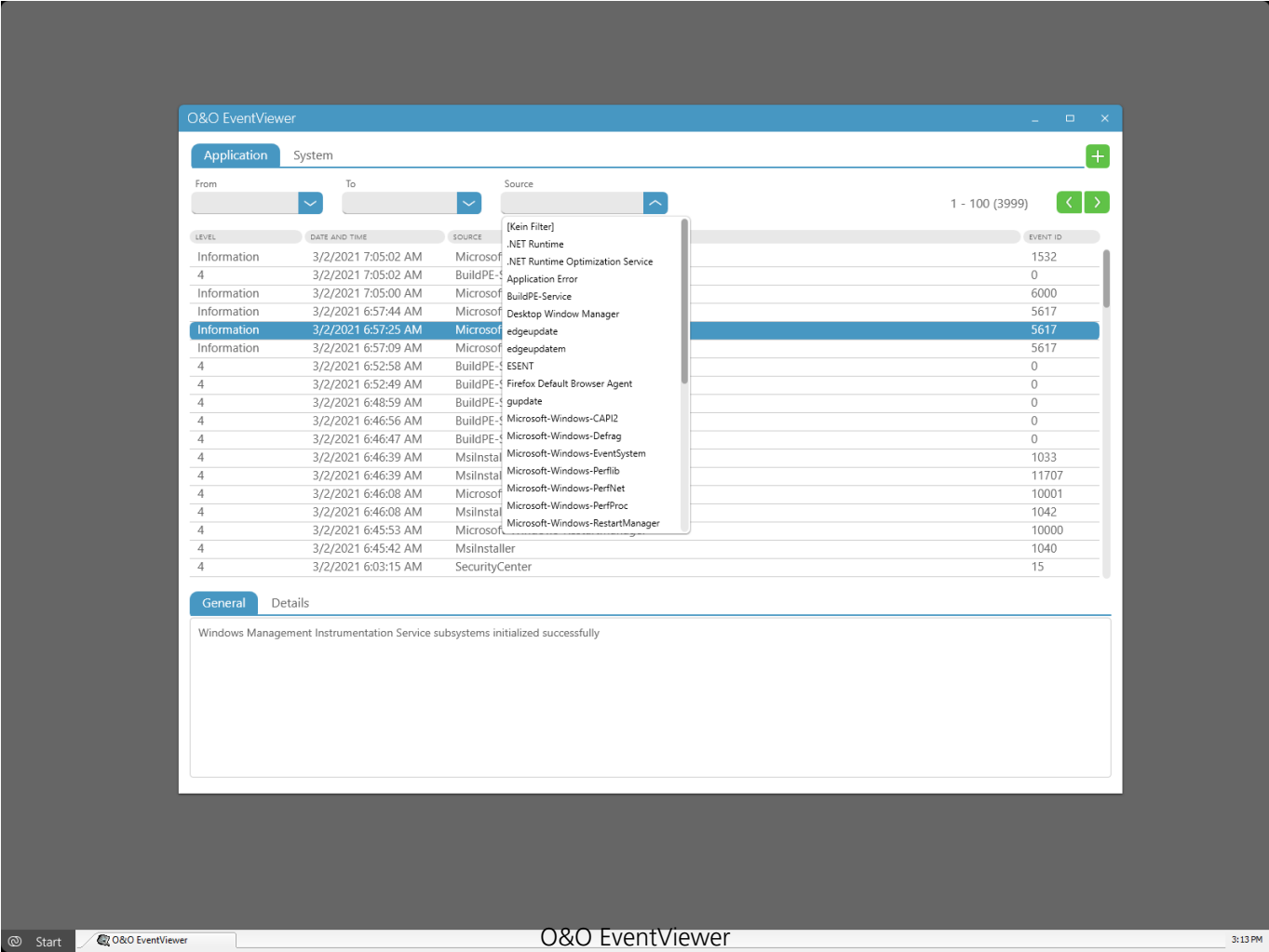
A system analysis and check, with the option of having any inconsistencies and errors corrected automatically. O&O Defrag checks your hard drive or SSD for inconsistencies that can lead to problems. The component memory and the Windows system files are checked for errors. After the check is complete, O&O Defrag will show you whether and which errors were found.

Most errors can be corrected directly with the repair function.



O&O EventViewer

The O&O Eventviewer gives you the option to evaluate current as well as imported event logs. In the upper section you'll be able to switch form area, it is possible to switch between system and program event logs. It is also possible to filter the event logs according to date and source using the buttons above the table. To the right of the filters there's an option for browsing the event log pages.



You'll be able to have additional information about an entry displayed by clicking the corresponding line in the table. In the lower section you can toggle between general and more detailed information.

To import an event log, click the button with the plus symbol in the upper right-hand corner. You'll then be able to load a file with the evtx extension into the program.

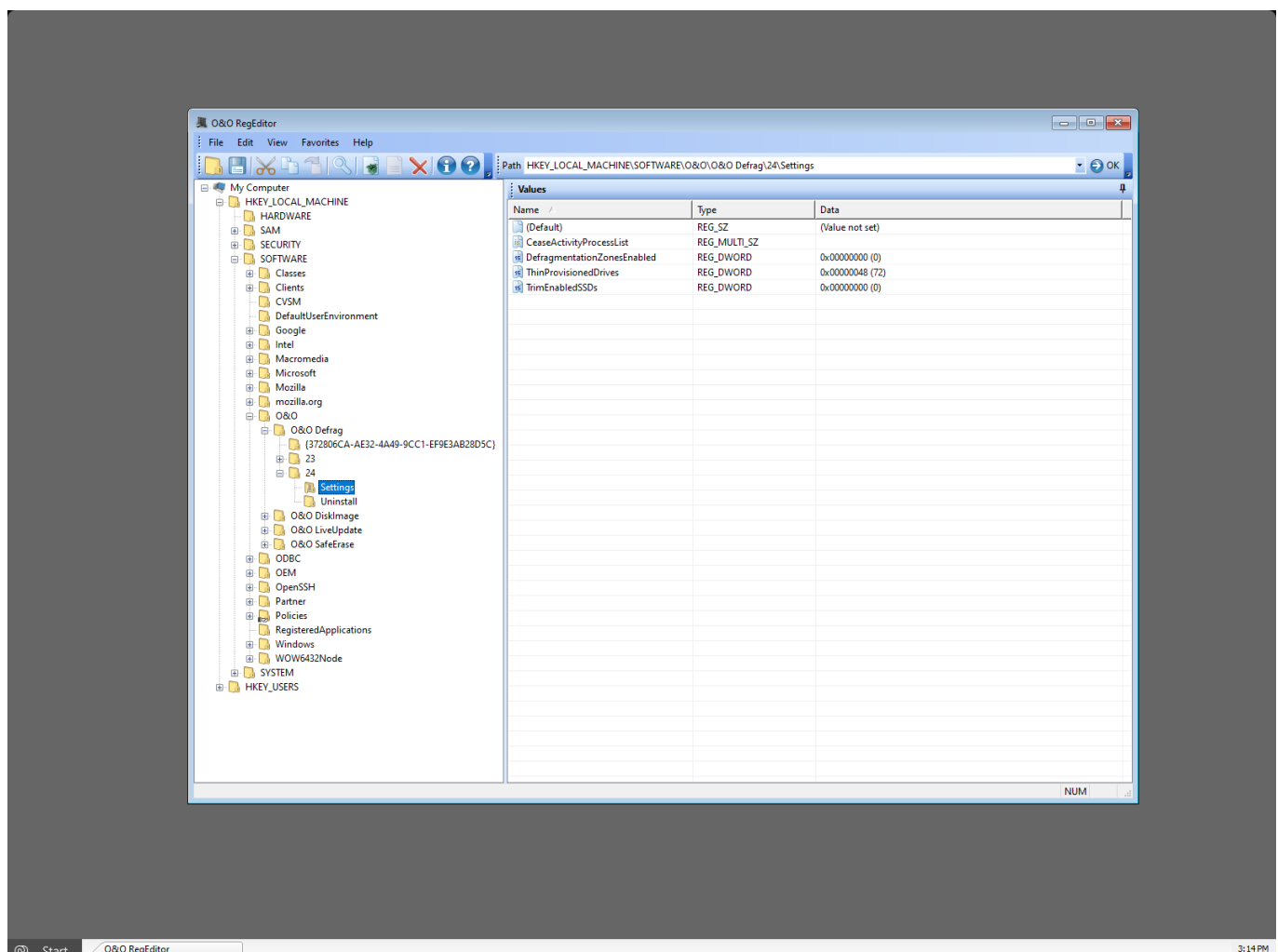
O&O RegEditor

O&O RegEditor is similar in structure to the well-known Windows RegEdit. The O&O RegEditor provides full access to the Windows registry database. The settings for numerous Windows applications, drivers and services are saved here. A special feature of O&O RegEditor is the direct navigation over the address line. At that point, the DNS name will be automatically entered.

- To open O&O RegEditor, click on **Start/Programs/AdministrativeTools** and then **O&O RegEditor**.

Warning!

The incorrect use of O&O RegEditor can cause severe problems affecting the whole system and may cause the need to reinstall the operating system. Before making changes to the Registry database in Windows, you should make a backup copy of all important computer information with an imaging program, such as O&O DiskImage. O&O cannot guarantee that problems caused by the incorrect use of O&O RegEditor will be repairable.



O&O RegEdit

Important information regarding O&O RegEdit

The correct functioning of Windows systems relies strongly on information saved in the registry database. Incorrect information in this database can cause the total crash of a Windows system.

O&O RegEditor allows for the reading and editing of the maintenance system of the registry database, even when the maintenance system is no longer operational.

Navigation is over a tree structure in the left-hand window, just as in Windows. The two main keys "HKEY_LOCAL_MACHINE" for computer-specific data and "HKEY_USERS" for user-specific data are displayed here.

All user profiles of the maintenance system are displayed in the user specific are.

The root key normally found under Windows "HKEY_CURRENT_USER" does not exist, since no current user is registered. You can reach these entries under "HKEY_USERS", followed by the key with the appropriate user name.

The under Windows usual branch link „HKEY_CLASSES_ROOT“ does not exist, but may be opened over the key „HKEY_LOCAL_MACHINESOFTWARECLASSES“ or the corresponding subkey in „HKEY_USERS“.

The root key "HKEY_LOCAL_MACHINESYSTEMCurrentControlSet" for service and driver configuration also does not exist, as the maintenance system has not loaded a current ControlSet. To reach the ControlSet, under "HKEY_LOCAL_MACHINESYSTEM" you can find several ControlSets (ControlSet001, ControlSet002, etc.). The current one is listed under "HKEY_LOCAL_MACHINESYSTEMSelectCurrent". It is normally ControlSet001.

The root key normally found under Windows "HKEY_CURRENT_CONFIG" does not exist, but can be opened over the key "HKEY_LOCAL_MACHINESYSTEMControlSetXXXHardware ProfilesCurrent". XXX is listed as the value from "HKEY_LOCAL_MACHINESYSTEMSelectCurrent".

Before changes can be made it is recommended that an Export (REG file) of the relevant key is made so that in any later import the changes can be made retrospectively. The exported REG files are compatible with the Windows REG files.

O&O RegEditor also allows for the editing, adding or deleting of keys and values. All data types recognized by Windows can be processed:

- REG_SZ: Symbol chain
- REG_DWORD: DWORD number, 32-Bit long
- REG_MULTI_SZ: Several symbol chains
- REG_EXPAND_SZ: Extendable symbol chain (environmental variables are employed)
- REG_BINARY: Binary values
- REG_QWORD: QWORD number, 64-Bit long

Various entry formats can be used when changing values. They can be entered in hexadecimal, decimal or binary formats.

What is the difference between a key and a value?

One or more values can be assigned to a key.

Keys are organized around main and subkeys. The main keys of O&O RegEditor in O&O BlueCon are:

- HKEY_LOCAL_MACHINE
- HKEY_USERS

Under these main keys are several sub keys, which in turn own further sub-keys.

Browse the Registry Database

- 1. Open **O&O RegEditor**.
- 2. Click **Search** in the ToolBar and you have access to entries in the registry database.
- 3. In the search field, enter the string, value or key that should be found.
- 4. Check the appropriate tick-box such as key, value or data.

Create new keys

- 1. Open **O&O RegEditor**.
- 2. Select a key (folder) and create a new key by right-clicking. The new key will be created as sub key.

Create new values

You can allocate one or several values to a key.

- 1. Open **O&O RegEditor**.
- 2. Select a key where you want to allocate a value.
- 3. You can create a new value over the value list or by right-clicking the value. You have several value types to select from:
 - Numerical values
 - String
 - Binary values

Change values

- 1. Open **O&O RegEditor**.
- 2. Select the key whose value you want to change.
- 3. Change the desired values in the value list by right-clicking. You can change the value in

the edit field, e.g. vary the path, disable or delete.

Delete values

- 1. Open **O&O RegEditor**.
- 2. Select the key whose value you want to change.
- 3. Delete the value in the value list by right-clicking.

Manage permissions

Assign permissions to registration key

- 1. Open the **O&O RegEditor**.
- 2. Select the key on which you want to assign permissions.
- 3. In the file menu click **Edit/Permissions**.
- 4. Select the desired users under group or user names. Then assign an access permission to the selected key as follows:
- Enable the check box **Assign** under **Full access** to assign the user permissions, to open the key, and to edit it as well as accept its ownership.
- If you want to allow the user to read the file, but not change it, enable the check box **Assign for Read key**
- To provide the user with special permissions for the selected key click **Advanced**.
- If you assign a child with permissions and you want to include inheritable permissions from this object's parent, enable the check box **Include inheritable permissions from this object's parent** under **Advanced**. Include this with the entries defined here.

Export keys with values as*.reg files

- 1. Open **O&O RegEditor**.
- 2. Click **Export** in the file menu.
- 3. Select the *.reg file you want to export and click **Open**.

Import keys with values as*.reg files

- 1. Open **O&O RegEditor**.
- 2. Click **Import** in the file menu.
- 3. Select the *.reg file you wish to import and click **Open**.

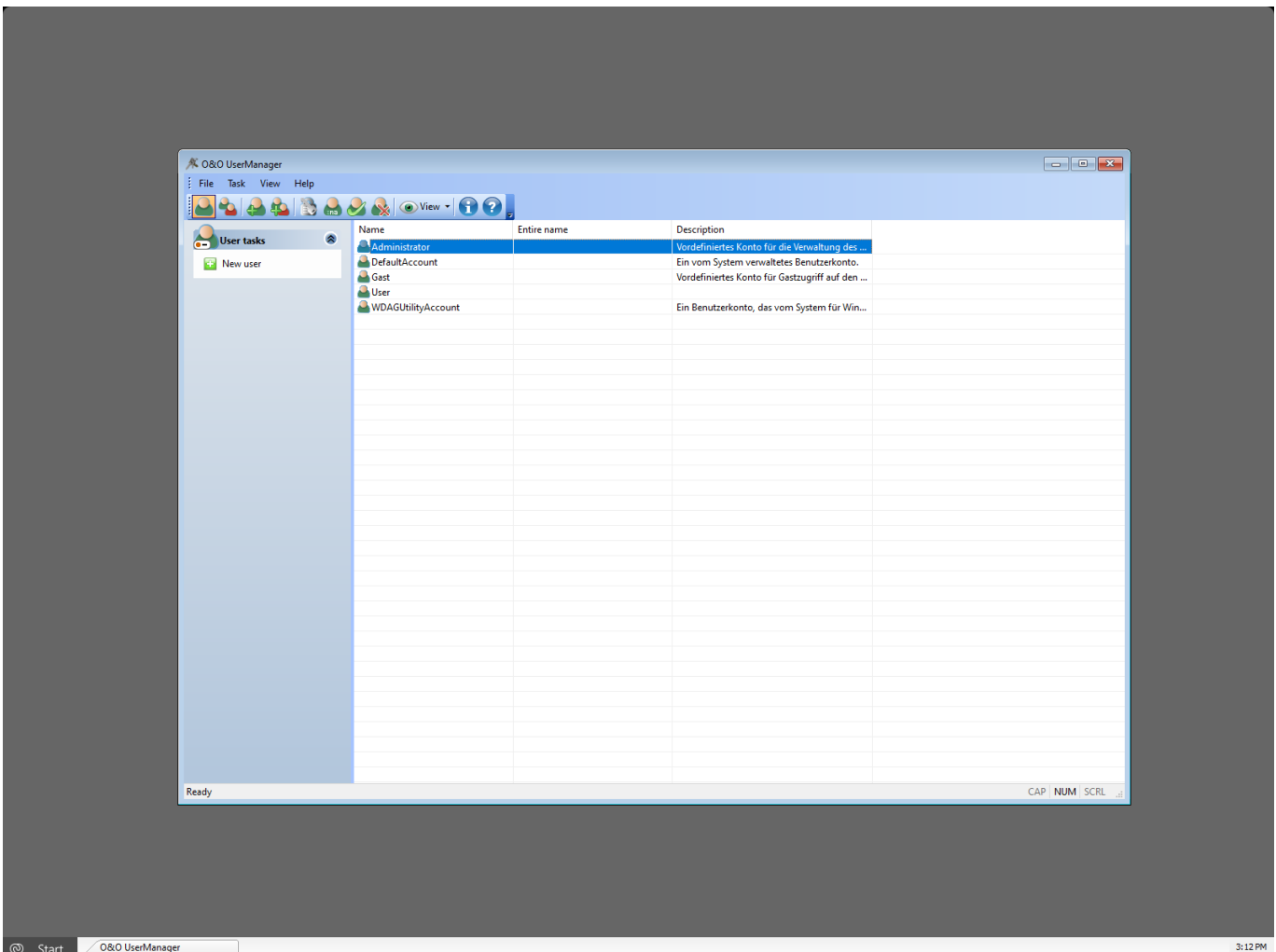
O&O UserManager

The O&O UserManager lets you control the local user management of your Windows systems.

- To open the O&O UserManager, click **Start/Programs/Administrative Tools** and then **UserManager**.

Note:

O&O UserManager can only manage local user accounts. No changes can be made to a domain controller.



O&O UserManager

Change user profiles

1. Select the icon **Create user profile**.
2. Select the user in the user list whose profile you want to change.
3. Make the desired modification e.g. password or name under **user activities**.

Important!

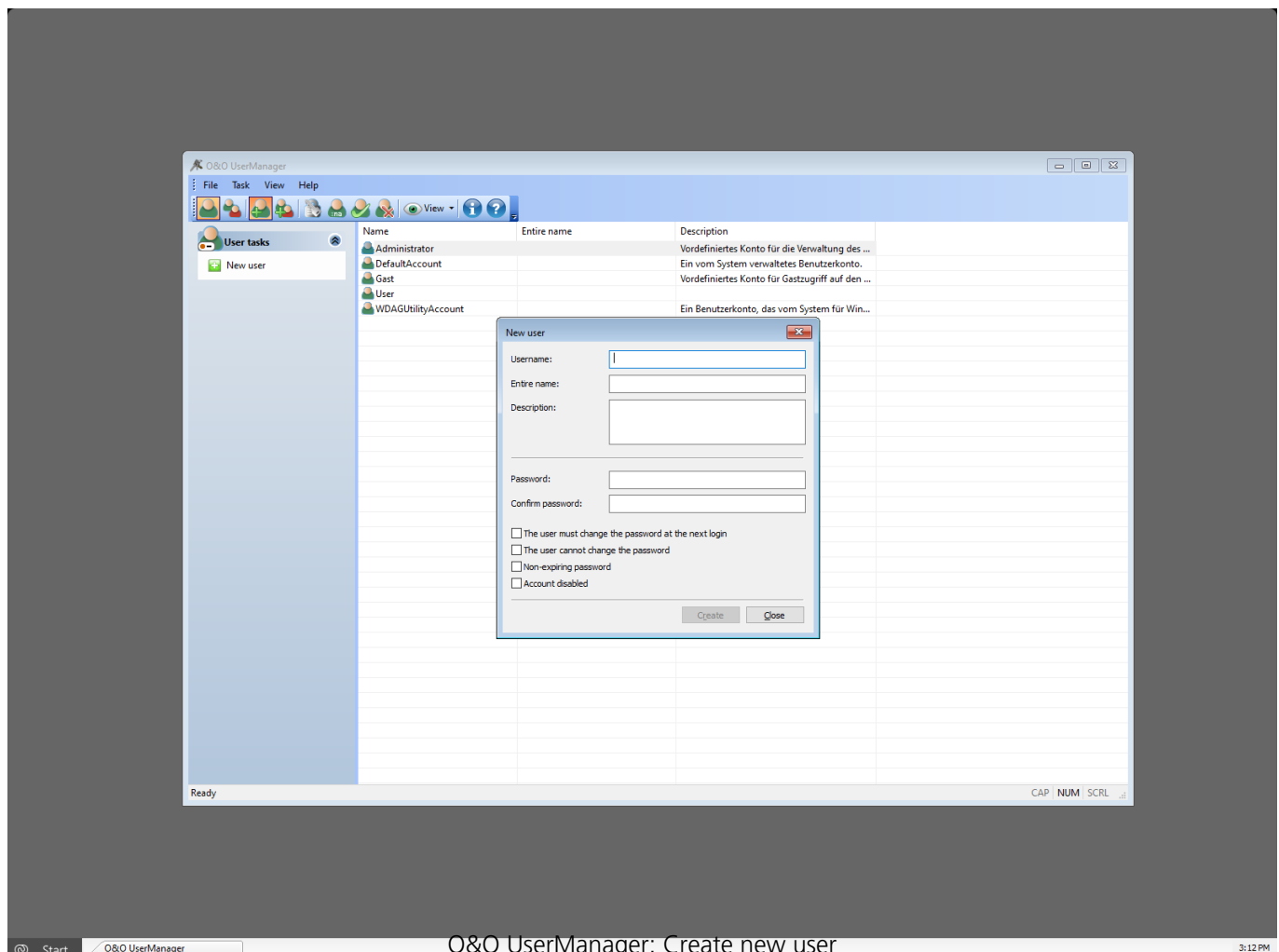
If you want to change passwords with O&O BlueCon, you won't have access to encrypted files. The coding cannot be decrypted after the password is changed!

Note:

It is not possible to decrypt used passwords. But you can change passwords even if you don't know the old password. This is recommended if, for example, a user has forgotten his password.

Create user

- 1. Select the icon **User account**.
- 2. In the menu **User activities** you can create a user profile with **New user**.
- 3. The new user will appear to the right of the user list.



Create user groups

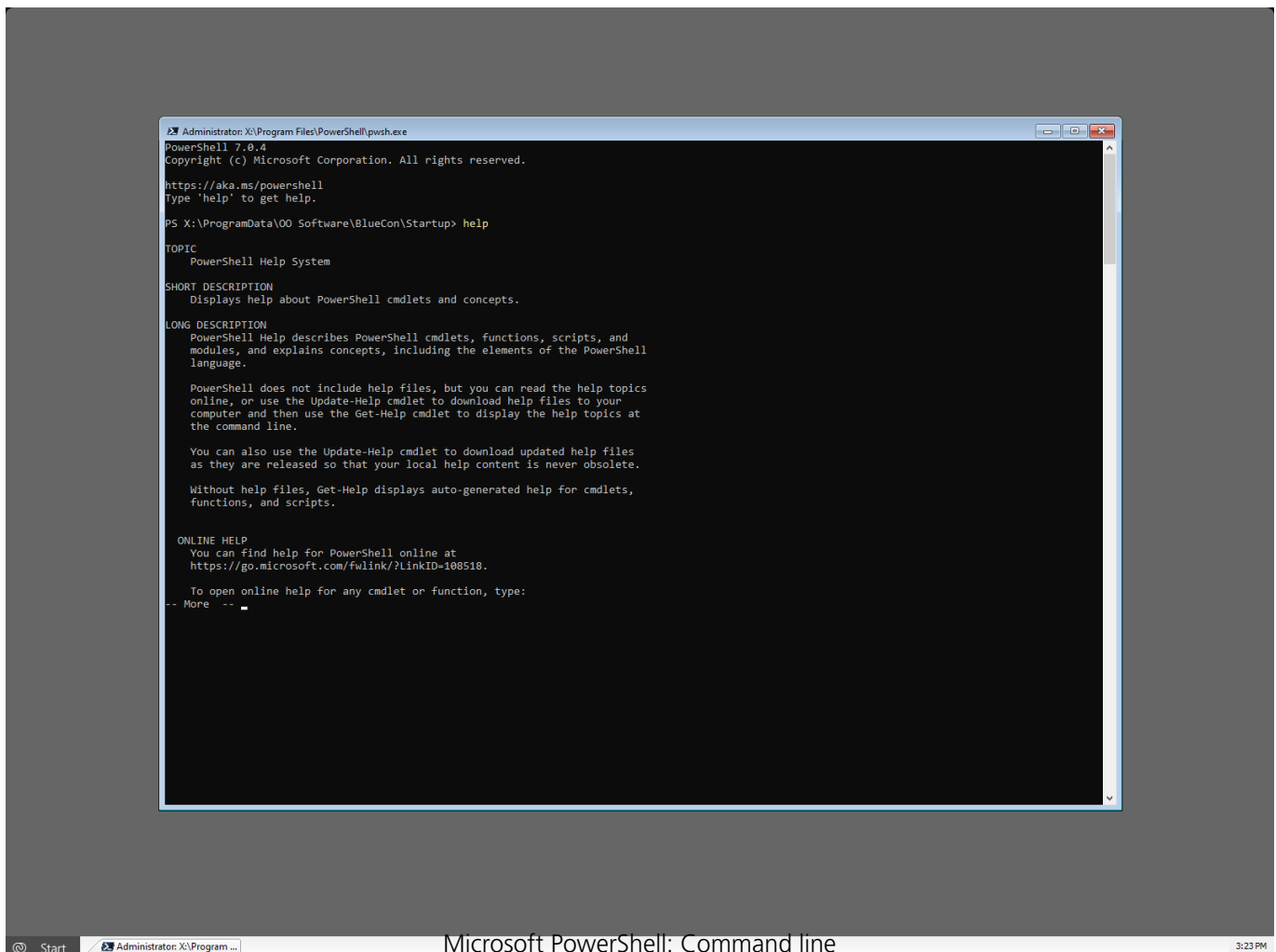
- 1. Select the Icon **User group**.

- 2. Click **New group** under **Groups activities**.
- 3. You can add new users to the group in the dialogue window under **Add**.

Microsoft PowerShell

The command line (Microsoft PowerShell) can be used for entering commands directly. It also enables the execution of batches.

- To open the Microsoft PowerShell, click **Start/Programs/Accessories** and then **Command line**.



The command HELP lists all available commands and their function. Please keep in mind that the screen will be automatically scrolled down when the lower end is reached. Some commands offer the option to stop the scrolling and will only continue if you press a key such as `dir /p`.

You can find a more detailed command description in the command directory of this guide.

Batch processing

Microsoft PowerShell makes it easy to process batch commands. This can be very useful if you have to repeat the command sequence but don't want to enter each one a new. Please complete the

following steps:

- 1. Create an ASCII file with a text editor such as O&O Notepad
- 2. Enter the commands - only one command per line - with the required arguments.
- 3. When finished, save the file with the .BAT extension. We suggest an 8.3-name convention, as you can easier access short filenames from the console interface.
- 4. Execute the file in the Microsoft PowerShell, for example, c: test.bat. The contained commands will be executed in the order they were saved.

If you would like to prematurely abort a batch operation, press Strg+C.

Command Index

Microsoft PowerShell lets you control O&O BlueCon with scripting. The Command Index below lists all commands, their syntax and parameters. If you need help on a particular command, you can use the `/?` switch to display a short description of the syntax and the command's purpose.

attrib

Displays or changes file attributes. This command displays, sets, or removes the read-only, archive, system, hidden and compressed attributes assigned to files or folders.

attrib

Displays or changes file attributes. This command displays, sets, or removes the read-only, archive, system, hidden, and compressed attributes assigned to files or folders.

Syntax `attrib [+ | -] [rash]
[<Drive:>][<Path>][<filename>]`

Parameters

<Drive:>	Indicates the path and name of the folder, file, or files you want to edit.
<Path>	
<Filename>	
+	Sets attributes.
-	Clears attributes.
r	Read-only file attribute.
a	Archive file attribute.
s	System file attribute.
h	Hidden file attribute.

cd

Displays the name of the current folder or changes the current folder.

Syntax `cd [[<Drive:>]<Path> | ..]`

Parameters

None	Used without parameters, <code>cd</code> displays the names of the current drive and folder.
<Drive:>	Indicates the drive (if different from the current drive) and folder to which you want to change.
<Path>	Indicates that you want to change to the parent folder.
..	

Example: `C:>Windowstest>cd ..`

cls

Clears the screen. The cleared screen shows only the command prompt and cursor.

Syntax `cls`

Parameters

None

copy

Copies one or more files to another location.

Syntax

Parameters

<Source>

copy <Source> <Target>

Indicates the location and name of a file or group of files you want to copy. The name can consist of a drive letter and colon, a folder name, a filename or a combination of all these. You may use wildcards to indicate a group of files.

<Target>

Indicates the path to the folder where you want to copy something. The target can consist of a drive letter and colon, a folder name, a filename or a combination of all these.

Example:

copy C:test D:test

del

Deletes specified files.

Syntax

Parameters

<Drive:>

<Path>

<Filename>

Example:

del [<Drive:>][<Path>]<Filename>

Indicates the path and name of the file you want to delete. You can use wildcards to indicate a group of files.

del C:test.txt

deltree

Deletes a selected folder.

Syntax

Parameters

<Drive:>

<Path>

deltree [<Drive:>]<Path>

Indicates the path and name of the folder you want to delete. Subfolders and files in this folders will also be deleted.

Example:

deltree C:Windowstest*.*

device / service

Entering the command 'device' or 'service' launches the O&O DeviceManager, It displays all installed drivers and services. It is also possible to change the startup point. (see O&O DeviceManager)

dir

Displays a list of files and subfolders in one folder.

Syntax	dir [/p] [<Drive:>][<Path>][<filename>]
Parameters	/p
None	Used without parameters or switches, 'dir' displays the hard disk's name and serial number: one folder including the file extension per line, the file size in bytes, the total number of listed files, their cumulative size, and the amount of disk space on the drive(in bytes)that's still available.
/p	Displays one screen of the listing at a time. Press the space bar to display the next screen. Any other key cancels the process.
<Drive:>	Indicates the drive and folder you want to see listed.
<Path>	
<Filename>	Displays the file, providing it is in the selected folder.By using wildcards, it's possible to have a group of files displayed.
Example:	dir /p

edlin

Entering the command 'edlin' will launch the O&O Notepad. O&O Notepad is a basic text editor that allows you to view, edit and save text files. Files in ASCII and Unicode may be edited using O&O Notepad.

Exit

Closes Microsoft PowerShell.

Syntax	exit
Parameters	None

help

Lists all available commands with short descriptions. If you need help on a particular command, you can use the /? switch to display a short description of the syntax and the command's purpose.

Syntax	help
Parameters	None

info

Displays information about the file system and drives.

Syntax `info { hdd | <Drive:> }`

Parameters

Hdd

Displays information about available drives.

<Drive:>

Indicates the drive whose information (MFT location, cluster size, number of sectors, etc.) you'd like to see.

mkdir

Creates a folder or subfolder.

Syntax

`mkdir [<Drive:>]<Path>`

Parameters

<Drive:>

Indicates the drive on which you want to create the new folder.

<Path>

Indicates name and path of the new folder. The maximum length of any single path is determined by the file system.

Example:

`mkdir C:test`

passwd

Changes or removes the password for a user account.

Syntax

`passwd <User account> [<password>]`

Parameters

<user account>

The user account whose password will be changed or removed.

<Password>

The new password for the user account. An empty password resets the current password, i.e. the password is deleted.

Example:

`passwd administrator test`

rename

Changes the name of a file. You cannot use the rename command to rename files across drives or to move files to a different folder location.

Syntax	rename [<Drive:>][<Path><alt>[<Path>]<neu>
Parameters	
<Drive:>	Indicates the drive where the name of the selected file should be changed.
<Path>	Specifies the location of the file to be renamed. The maximum length of any single path is determined by the file system.
<alt>	Indicates the name of the file you want to rename.
<New>	Indicates the new name for the file. The path is relative to the current path.
Example:	rename C:testtest.txt test1.txt

rmdir

Deletes (removes) a folder.

Syntax

Parameters

<Drive:>

<Path>

rmdir [<Drive:>]<Path>

Indicates the drive where you want to delete the selected folder.

Indicates the name and path of the folder that should be deleted. The maximum length of any single path is determined by the file system.

safeerase

Securely deletes files or drives.

Syntax

Parameters

None

/highestsecurity

/highsecurity

/mediumsecurity

/lowsecurity

/lowestsecurity

/output <File>

safeerase [/<Security level>] [/output <File>]
 [/verbose] [/silent] [/help] [/showdisks]
 [/matchfile] [/matchfolder] [/matchall] [/volume
 <Drive>] [/disk <Hard disks#>] [/freespace
 <Drive>] [/y]

Help text will be displayed.

The available security levels. They refer to the deletion methods described. If no security level is chosen, the default is /highest security.

Saves the output additionally to a file.

<code>/verbose</code>	Detailed output will be shown.
<code>/silent</code>	Screen output will not be shown.
<code>/help, /?</code>	Help will be shown.
<code>/showdisks</code>	Displays drive and hard disk information. The disks will be numbered so that the numbers can be used with the command <code>/disk</code> .
<code>/matchfile</code>	Only matching files will be deleted. (Standard) Use the 'match' command in combination with a file filter (e.g. *.txt, a?.exe)
<code>/matchfolder</code>	Only matching folders will be deleted.
<code>/matchall</code>	Matching files and folders will be deleted.
<code>/volume <Drive></code>	Deletes the entire content of the drive.
<code>/disk <Hard disks#></code>	Deleted the entire hard disk.
<code>/freespace <Drive></code>	Deletes free space on the drive.
<code>/y</code>	All security checks will be suppressed.
Examples:	<code>safeerase example.txt /output test.log</code> – The text file is deleted with the highest security method and the output saved in the file test.log. <code>safeerase /matchfile *.txt /silent /mediumsecurity</code> – All text files in the current folder are deleted with the medium security level without output to screen. <code>safeerase /freespace C: /verbose</code> – The free space on C: is deleted with the highest security method and detailed output. <code>safeerase /volume D: /y /lowsecurity</code> - The content of the drive D: is deleted with a low security level and without security checks. <code>safeerase /disk 0</code> - All partitions on the first hard disk are completely deleted. All parameters, apart from <code>/help</code> and <code>/showdisks</code> , can be combined with one another.

scopy

Copies one or more files to another location. If the files lie on an NTFS Drive, they retain the security and ownership attributes.

Syntax

scopy <Source> <Target>

Parameters

<Source>

Specifies the path and name of a file or file group which will be copied from. <Source> can consist of drive name and colon, folder name, file name or a combination thereof. To specify a group of files, you may use wildcards.

<Target>

Indicates the path and name of a file or file group in which something will be copied. <Target> can consist of drive name and colon, folder name, file name or a combination thereof.

type

Displays the contents of a text file. Use the type command to view a text file without modifying it.

Syntax

type [/p] [<Drive:>][<Path>]<File name>

Parameters

/p

Displays one screen of the listing at a time. To see the next screen, press any key.

Press space bar to display the next screen. Any other key cancels the process.

<Drive:>

Specifies the location and name of the file you want to view.

<Path>

<Filename>

If using long filenames and if the filename contains spaces, you must enclose the filename within quotation marks (") or use the short (8.3 style) filename.

Example:

type C:testtest.txt

user

Displays a list of all local user accounts.

Syntax

user

Parameters

None

ver

Displays the version number of Microsoft PowerShell.

Syntax	ver
Parameters	None

vmap

Lists all mounted volumes, their mappings and additional information.

Syntax	vmap
Parameters	None

xcopy

Copies files and folders, including subfolders.

Syntax	xcopy [/e] [/s] <Source> <Target folder>
--------	--

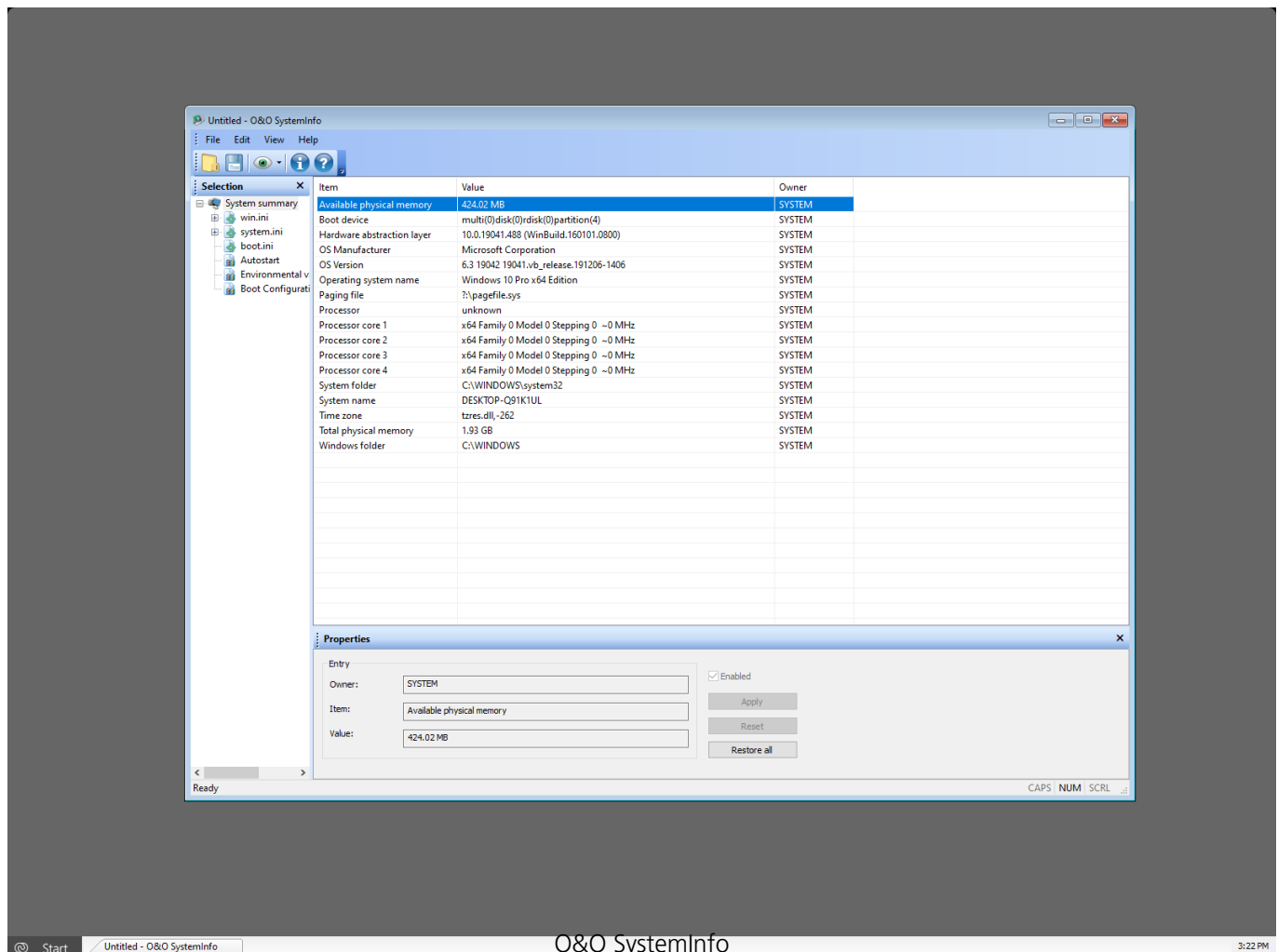
Parameters

/e	Copies all subfolders, even if they are empty.
/s	If the files are located on an NTFS volume, security and ownership attributes will be preserved.
<Source>	Indicates the path and name of a file or file group from which you want to copy.<Source> can consist of a drive letter and colon, a folder name, a filename or a combination. To specify a group of files, you may use wildcards.
<Target folder>	Indicates the path where you wish to copy. Target can consist of a drive letter and colon, a folder name, a filename, or a combination.
Example:	xcopy C:windowstest*.* D:test

O&O SystemInfo

O&O SystemInfo gives you the best possible overview of the system settings in your Windows operating system. Here you can delete, disable or change system parameters.

- To open O&O SystemInfo, click on **Start/Programs/Administrative Tools** and then on **System Information**.



Note:

The Boot Configuration Data (BCD) for Windows Vista and newer operating systems is only supported to a limited degree. BCD Store cannot be manipulated and is only shown for control purposes.

System Information displays:

- Configuration of the win.ini files
- Configuration of the system.ini files

- Configuration of the boot.ini files
- Autostart entries
- Environmental variables

A further important aspect of O&O SystemInfo is the presentation of a list of Autostart entries. Programs from the Autostart Program group are displayed as well as the most important Autostart areas from the registry database, including:

HKEY_LOCAL_MACHINE\SOFTWARE\Microsoft\Windows\CurrentVersion\Run
HKEY_CURRENT_USER\SOFTWARE\Microsoft\Windows\CurrentVersion\Run

These areas are also favored by virus programs as storage locations for viruses, Trojans or Spyware. The Autostart entries can be disabled and/or enabled with SystemInfo. This prevents starting damaged or infected programs.

Edit system parameters

- 1. Select a configuration or entry.
- 2. To edit a system parameter, select one from the list on the right.
- 3. A window will appear where you can edit.

Disable system parameters

- 1. Select an entry from a configuration.
- 2. Delete the checkmark next to "Enable".
- 3. The element and its value are now disabled.

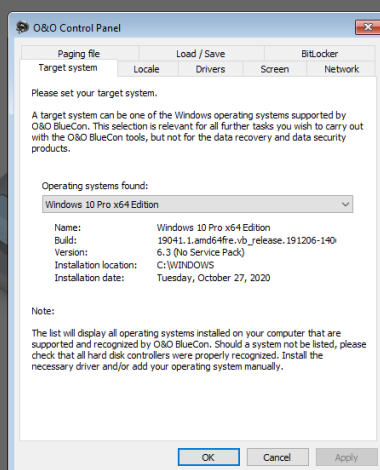
Delete system parameters

- 1. Click a system parameter to see its value displayed in an editing window.
- 2. You can now delete the parameter.

Control Panel

With the Control Panel you can set parameters, screen resolution, language and keyboard settings, time zones, enable the network and select the operating system. The last function is particularly important in cases where the target computer has several operating systems installed. This selection defines which system database O&O BlueCon should communicate with. All the O&O Program tools executing system-dependant information will automatically access the selected system. By using the Control Panel, it's possible to change the target system or enable the network retrospectively while the program is running.

- To open the O&O System Settings click **Start/Settings** and then **Control Panel**.



Control Panel

Load drivers

If a device like a hard disk or network card isn't automatically recognized when using the Start CD under Windows PE, it could be that a required driver for the controller (e.g., for RAID) is missing.

You can start loading a new driver immediately after inserting the Start CD using the dialog **O&O**

System settings and the tab **Drivers**. You can also find this dialog at a later moment under **Start/O&O System settings/Drivers**.

Please follow these instructions for loading a new driver:

1. Open the tab **Drivers** in the dialog **O&O System settings** as described above.
2. All recognized Windows devices as well as all devices missing installed drivers will be displayed. Select a device for which you want to load a driver.
3. Click **Load**.
4. Select the desired driver such as one on a connected hard disk, USB Stick or CD*.
5. In the dialog, select **Open** to install the driver.
6. You'll then see a program message informing you about the status of the installation.

*Note:

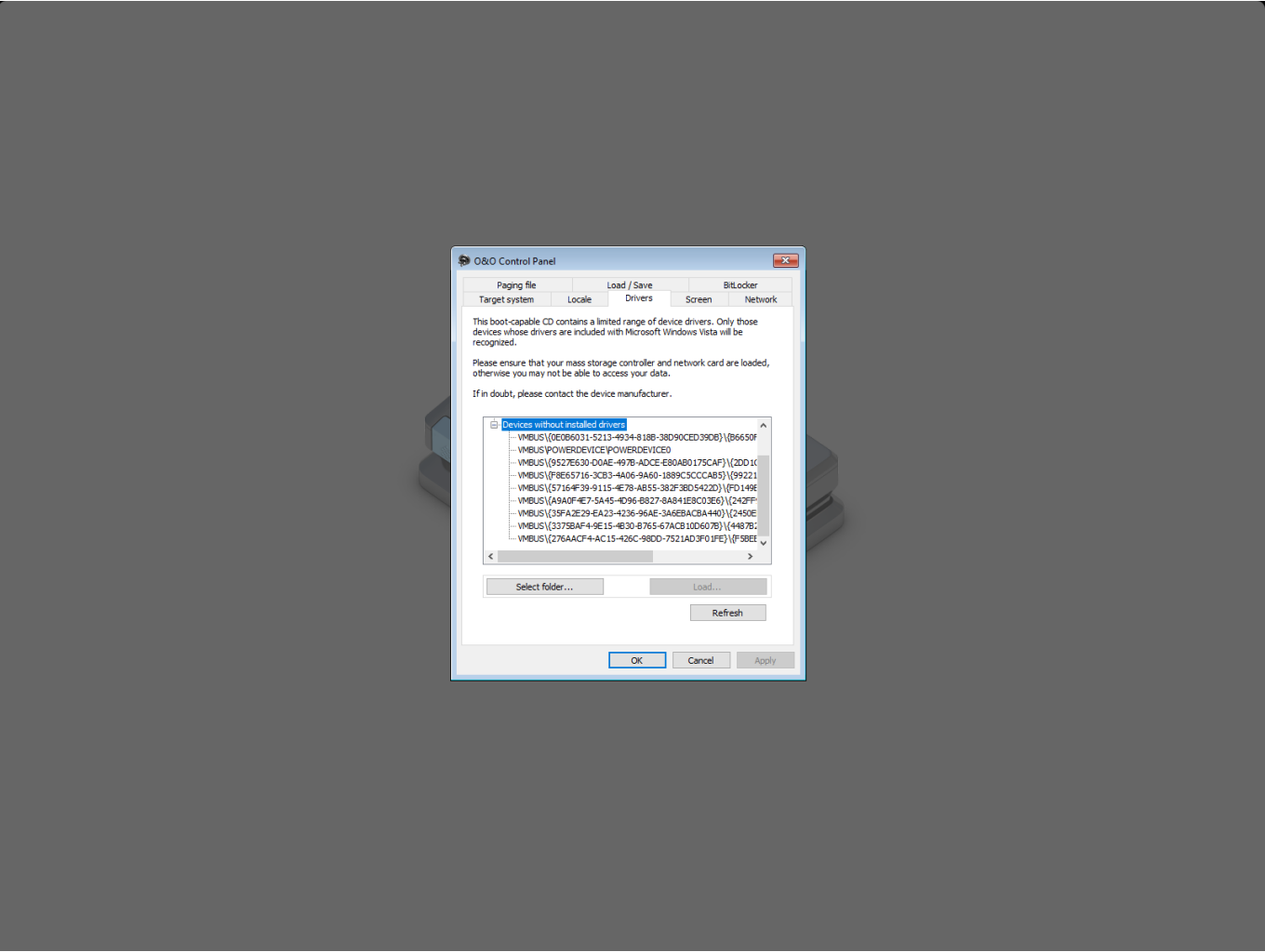
You can remove the Start CD from the drive in order to insert a driver CD from a manufacturer.

Note:

Under certain circumstances you may receive a message requiring you to restart if you have loaded an additional driver under Windows PE. This message is automatically generated by Windows PE but is irrelevant when starting from a CD. Simply decline the request and follow the further instructions in the pop-up window.

Note:

Encrypted drives are not supported under Windows PE, except Bitlocker encrypted drives.



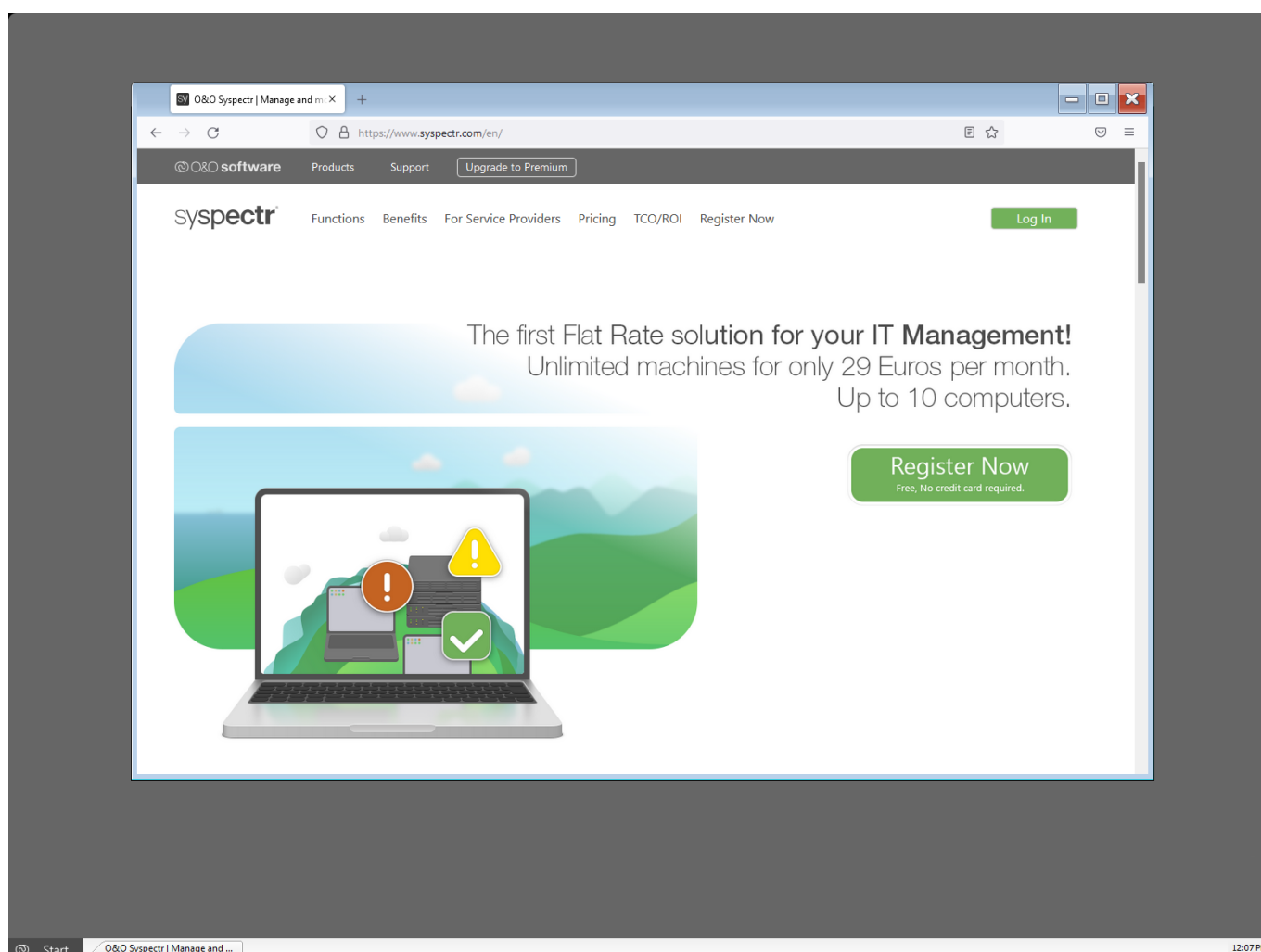
Treiber laden

Web Browser

The integrated FireFox® Web Browser makes it possible to view internet-based content. This allows you to research problems on the Internet or download files that may be useful for correcting a problem.

Note:

To use this feature, it is necessary to be connected to a Local Area Network (LAN) with access to the Internet.

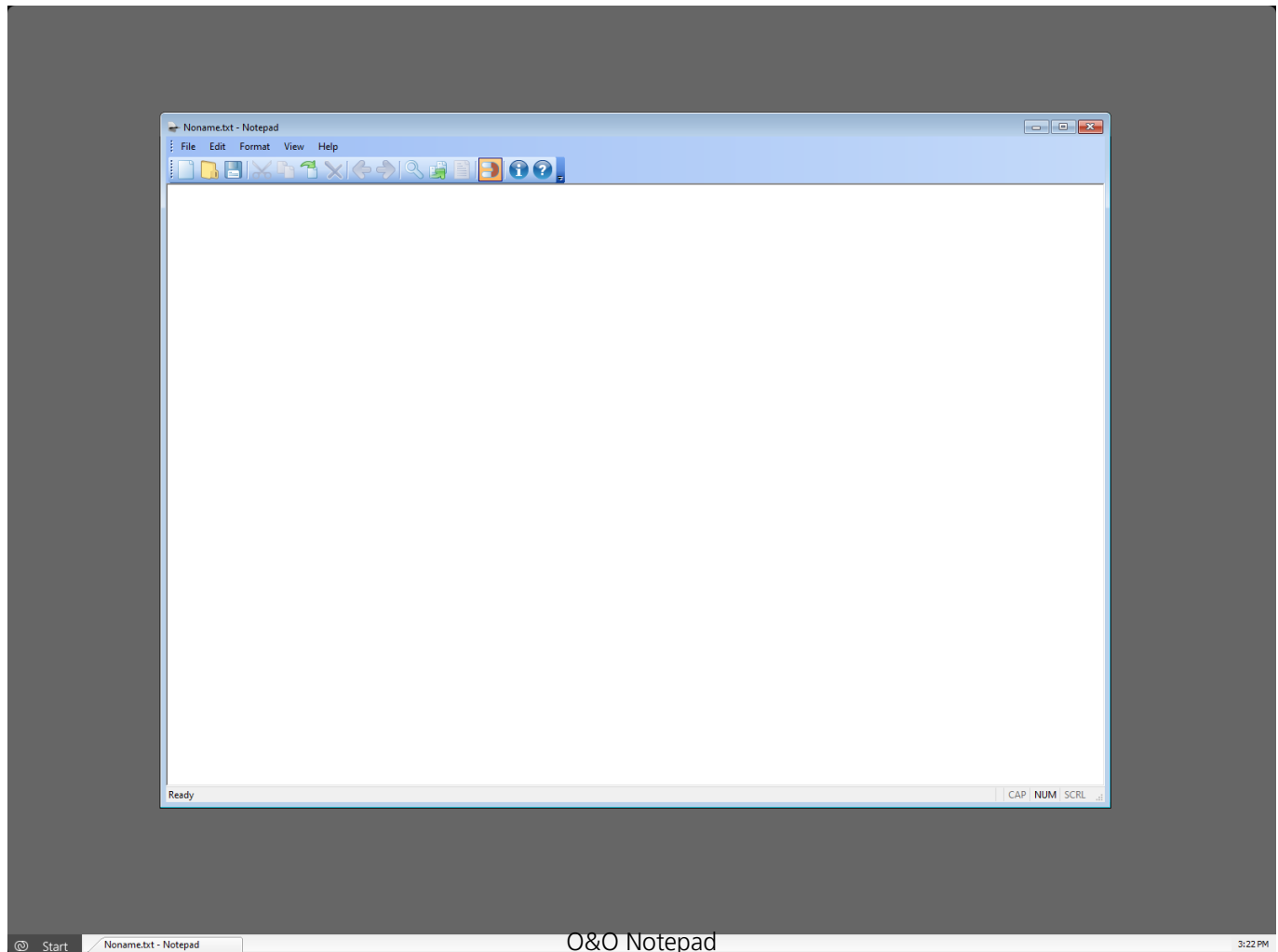


Web Browser

O&O Notepad

O&O Notepad is a basic text editor that allows you to view, edit and save text files. Files in ASCII and Unicode may be edited using O&O Notepad.

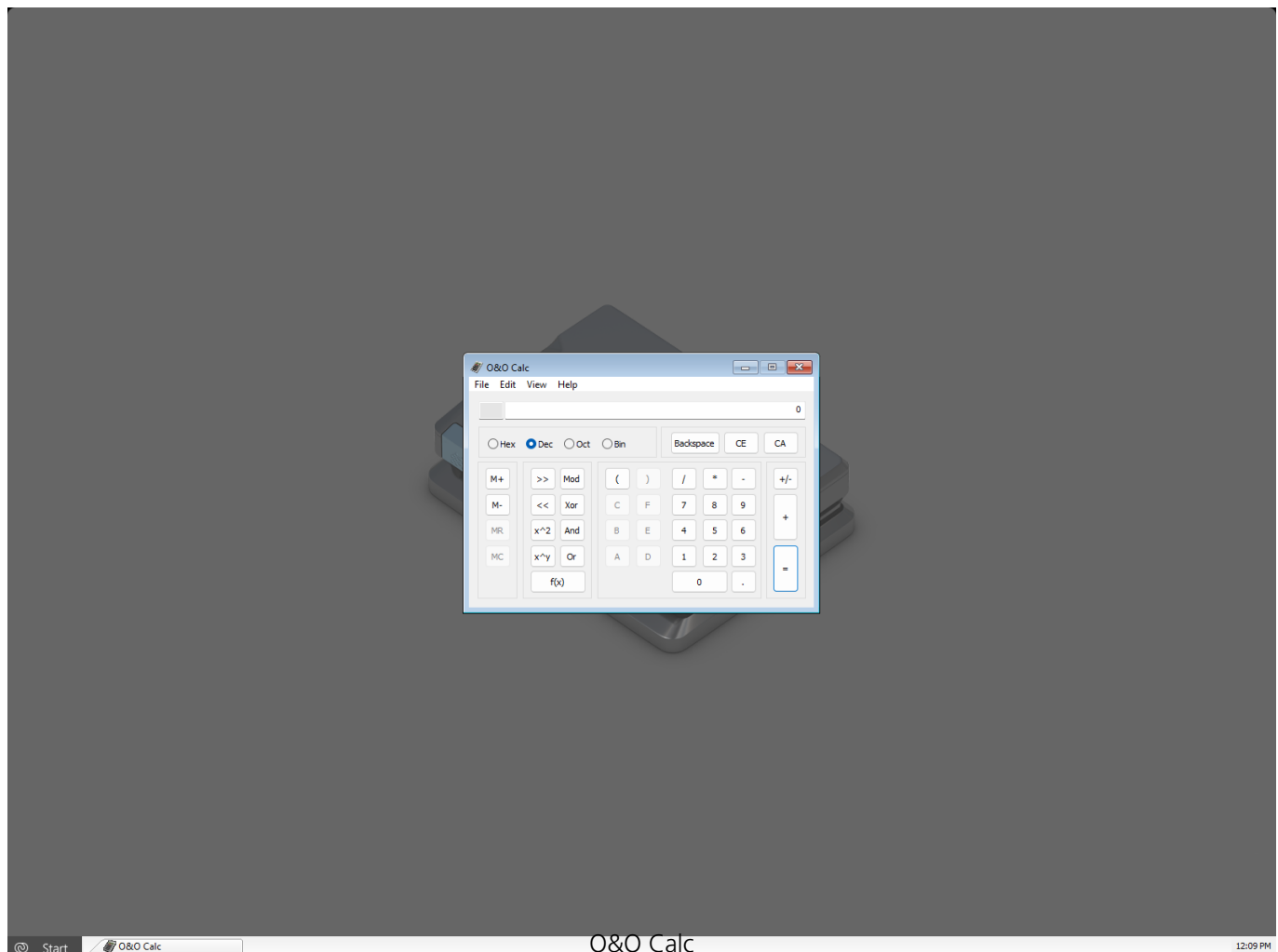
- To open O&O Notepad, click **Start/Programs/Accessories** and then **Notepad**.



O&O Calc

O&O Calc, O&O BlueCon's built-in calculator, makes it possible to perform basic arithmetic as well as conversions between commonly used number formats (Decimal, Hexadecimal, Octal and Binary). Additionally, O&O Calc is able to calculate equations.

- To open the O&O Calc, click on **Start/Programs/Accessories/Calculator**.



End user license agreement

O&O Software GmbH

End User License Agreement 5.9.2 (EULA)

GENERAL SECTION and SPECIALIZED SECTION

GENERAL SECTION

IMPORTANT - PLEASE READ CAREFULLY

This End User License Agreement (EULA) is organized into 2 sections: a general part, which is valid for all O&O products, and a specialized part, which includes the particular terms of each corresponding product. By accepting both parts of the license terms they automatically form part of your contract with O&O Software, Bülowstraße 66, 10783 Berlin.

Once accepted, these license terms will become part of your contract with O&O Software, Bülowstraße 66, 10783 Berlin.

If you have any questions regarding this contract and the license terms, our Service Team is available to help you under info@oo-software.com. The software product is protected by copyright laws and international copyright contracts as well as other laws and agreements concerning intellectual property.

1. Object and form of delivery

(1) You receive the software covered by the contract in executable for (Binary code) together with the relevant documentation released by O&O according to Section (6).

(2) The software provides the range of functions described in the given documentation. The documentation regarding functionality may be consulted prior to concluding the contract in the internet presentation on the following site www.oo-software.com.

(3) Delivery will be made according to the way in which you have purchased the software, either by having a disk directly handed over, or sent by mail to an address you have supplied, or through the forwarding of a license as well as any required download information to a given E-mail address.

(4) If you are currently receiving updates as part of a maintenance agreement, these will be made available electronically to you for downloading.

(5) Changes to the delivery or E-mail address can only be considered, if they are supplied in writing or by E-mail to the address or E-mail address indicated on www.oo-software.com at least two weeks before delivery of the update.

(6) A printed copy of the documentation will not be included in the delivery. The documentation consists primarily of electronic aids.

2. Requirements for application (system requirements)

(1) Installation of the software is not part of the agreement.

(2) Depending on the software, there are certain system requirements that must be met in order to use it according to the terms of this contract. These will be defined according to each product in the specialized section of this contract.

3. Rights of use, including test versions, unauthorized transfer, and application

(1) O&O grants you, upon payment of the agreed one-time fee, a permanent, spatially unlimited and non-exclusive right to use the software.

(2) Test versions - if you have installed a test version of one of our products taken from the O&O Website www.oo-software.com, the right of use will be, according to the program, for a limited time only and/or technically restricted.

(3) One copy of the software is entitled to be used on a maximum of one (1) output device /workstation simultaneously.

(4) If you want to use the software on more than one output device/workstation, the rights of use must be extended accordingly. To find out which O&O products are also available as volume licenses, please consult www.oo-software.com. The separate price list concerning O&O Volume Licenses will apply to extending the rights of use without redelivery. A subsequent extension of the rights of use without redelivery does not result in further warranty.

(5) Any use beyond that agreed upon in the contract is one in violation of the contract. In such a case, you are required to report this use that exceeds the rights of use to the supplier without any delay. The parties will then try to bring about an agreement for extending the rights of use. For the duration of the excessive usage, i.e., until the conclusion of such an agreement or the cessation of the excessive usage, you are required to pay compensation for this excessive usage according to the amount indicated in our price lists. The amount of compensation will be calculated on the basis of a four year, straight-line depreciation. If we are not informed of the excessive usage, a contract penalty in the amount three times the price of the usage indicated in the price list will be due to O&O.

(6) You are entitled to create a backup copy of the software and to conduct ordinary data backups. The creation of more copies than the amount needed for the backing up of any future usage (including the backup copies and data backups) is not allowed.

(7) Copyrights and other trademarks within the software may not be altered or removed. They must be transferred onto every copy of the software.

(8) Unauthorized transfer - only when you have purchased the software with an accompanying disk are you permitted to transfer it and then, only under the following conditions: a resale of the software is only permitted when it involves an entire software copy, i.e., by surrendering your own usage of the purchased copy, you are entitled to transfer these rights of use of the disk onto a third party according to the terms of the agreement existing between you and O&O. When making such

a transfer, you are required to hand over to the third party all materials related to the software that are covered in the contract and to delete the software from any storage volumes (e.g., hard disks) remaining in your possession.

(9) Unauthorized rental and service - The purchase of this contract does not entitle you to any public transfer or rental of the software. You are also not entitled to include the software as part of your providing services for and in the presence of any third parties. You may purchase an appropriate license from O&O for doing this.

(10) Prohibition on Reverse Engineering, Decompilation, and Disassembly. You may not reverse engineer, decompile, or disassemble this software except and only to the extent that such activity is expressly permitted by applicable law notwithstanding this limitation.

(11) Compliance with Applicable Laws. You must comply with all applicable laws regarding use of software.

4. Payment

(1) The prices are given with the corresponding sales taxes included, unless otherwise indicated.

(2) Test versions - Downloads of test versions offered by O&O are provided free of charge, unless otherwise indicated.

(3) If you receive updates of your programs as part of a Maintenance Agreement, the terms of payment in these contracts will apply to these Maintenance Agreements.

(4) O&O is entitled to forward any data it has received onto third parties requiring it for purposes of collection.

(5) Until payment is made in full, O&O retains possession of all rights, particularly those concerning copyrighted rights of use, on the materials included in this contract. O&O is specifically entitled to cancel a contract, for example, when your payment is delayed, it prohibits the further using of the software and demands the surrendering of all copies or this being impossible, to demand their deletion. Should a third party have access to the object of purchase before payment is completed for the contractual software, you are required to inform this third party about the object being the property of O&O and to inform O&O, in writing, about the third party's access.

5. Material defect and defect of title

(1) The software package or download you receive is free of any material defect or defect of title.

(2) A material defect exists when the software is unable to be used as described in the documentation appearing on the website www.oo-software.com and included in delivery or available for downloading. O&O is constantly checking to make sure that other sources are not misrepresenting the functions and properties of the software as described in the documentation. You can therefore assume that any descriptions beyond those found in the software documentation have not originated with O&O and are also unknown to it. Please inform O&O if you learn of any software descriptions that include functions and properties not mentioned in the

documentation.

(3) A defect of title exists when, after delivery of the software, the rights needed for using it as stipulated in the contract have not been effectively granted.

(4) Any claims concerning defects of material and/or title related to the software have a limitation period of two years subsequent to delivery of the program or transmission of the serial number needed for downloading. If you are not a private individual, the warranty period is shortened to one year. If O&O has fraudulently concealed a material defect, a three year limitation period will cover claims related to this defect. Payment for compensation that you might have been entitled to as a result of cancellation or an abatement can be refused upon expiration of the limitation period.

(5) You are required to inform O&O, in writing if possible, of any defects that arise immediately upon their discovery. While doing so you should also describe, as well as possible, how the defect is communicated, the effect it has on the program, and under which circumstances it occurs.

(6) Should defects be reported to O&O within the limitation period, it will undertake a cure free of charge.

(7) As part of the cure, the corrected software will be redelivered as agreed. An on-site analysis and correction of the error on your system will not take place. O&O assumes the ensuing expenses for the cure, in particular the costs for transport, labor, and material. You are personally responsible for installation. O&O specifically does not assume on-site installation as part of its obligation with regard to defects of material or title. Should a change of the program be required as part of the cure, O&O will make the necessary changes in the documentation without any charges.

(8) After the unsuccessful expiration of a deadline you set for cure, you can cancel the contract or reduce the purchase price and demand compensation instead of service or the replacement of any futile expenditures.

(9) A deadline is not required when a) O&O refuses both kinds of cure, even if it is entitled to do so as a result of the arising expenses, or b) the cure is impossible, or c) the cure is unacceptable to you, or d) the cure is unsuccessful.

A subsequent improvement is considered a failure after the second unsuccessful attempt, unless there is something particular about the type of software or the defect itself or the surrounding circumstances that would indicate otherwise.

(10) You are not entitled to cancel the contract if the defect is negligible, nor may you, in this event, demand compensation instead of full service.

(11) In the event of cancellation, compensation is due for any uses made. The compensation for use will be based on a four year, straight-line depreciation of the purchase price.

(12) As a result of the abatement, the purchase price will be reduced by the amount which is calculated for deducting the defect from the value of the software. The standard used will be its

value at the time the contract was concluded. The amount, when necessary, is to be calculated by estimation. As a result of this reduction, any amount larger than that paid for the reduced purchase price will be refunded.

(13) If it turns out that a reported problem did not arise as a result of a defect in the software, O&O is entitled to invoice you, according to the amount charged in its price lists for such services, the expenses for analysis and correction of the problem if you can be accused of malice or gross negligence.

(14) The seller's warranty is canceled, when changes are made on the software without expressed written consent or when the software is not used as intended or used in an improper software environment, unless you can prove that these facts had nothing to do with the problems that occurred.

6. Limitation of compensation

(1) O&O is liable for compensation for every legal ground to the extent described in the following provisions.

(2) The extent of liability of O&O for damages caused by malice or gross negligence arising from O&O itself or one of its vicarious or legal agents is unlimited.

(3) There is no limit to the extent of liability of O&O or any of its legal or vicarious agents for damages involving injury to life, physical well-being or health, or for simple breach of duty.

(4) There is unlimited liability for damages caused by serious organizational fault on the part of O&O as well as for damages arising from a missing guaranteed characteristic.

(5) For the breach of an essential contractual duty, O&O is liable for damages normally foreseen in a contract when none of the instances in provisions (2) - (4) applies.

(6) Any further liability for compensation is excluded, specifically excluded is liability without fault.

(7) Liability as defined by the product liability law remains untouched.

(8) If damage can be traced to have arisen through a fault on the part of O&O as well as on the part of yourself, you must have your share of the fault evaluated.

You are responsible for making a standard backup of your data at least once a day. For data loss caused by O&O, O&O is only liable for the expense of duplicating the data on your backup copies that need to be created and for the restoration of data, which would have also been lost during a standard backup procedure.

7. Final provisions

(1) You may only balance claims from O&O with indisputable or legally valid claims.

(2) Changes and amendments to this contract must be made in writing. This also applies to

changes to this provision.

(3) The contract is subject to German law. The uniform UN purchasing law (CISG) as well as the UNIDROIT Factoring Agreement of Ottawa do not apply.

(4) Any general terms and conditions on your part will not be applied.

(5) This license agreement is subject to the laws of the Federal Republic of Germany. In the event you are not a private individual or a resident of the Federal Republic of Germany, we agree that the district court in Berlin will be the competent court for litigation arising from this contract.

8. Contact

If you have any questions concerning the O&O Software License Agreement or wish to speak with O&O, please get in touch with us.

O&O Software, Bülowstraße 66, 10783 Berlin, Germany

E-Mail: info@oo-software.com / sales@oo-software.com, Web: www.oo-software.com

SPECIALIZED SECTION

O&O AutoBackup

Amendment to: 2. Requirements for application (system requirements)

O&O AutoBackup Professional Edition

The software requires Windows 8.1 (all Editions), Windows 10 (all Editions) or Windows 11 (all Editions) operating systems. Application within the terms of this contract is not achieved without the use of one of these operating systems. Control of the program through a network management is not possible.

O&O BlueCon

Amendment to: 2. Requirements for application (system requirements)

The software requires Windows 8.1 (all Editions), Windows Server 2012 R2 (all Editions), Windows 10 (all Editions), Windows Server 2016 (all Editions), Windows Server 2019 (all Editions) or Windows Server 2022 (all Editions) operating systems. Application within the terms of this contract is not achieved without the use of one of these operating systems.

The product at hand can only be employed according to the acquired license. The following license types exist for O&O BlueCon:

O&O BlueCon Admin Edition

You are authorized to use the software product on all computers a) in the possession of the company (legal person or natural person(s) in the case of corporations) owning the license and b) all located at a single site. This software product may be used only via the corresponding bootable

medium that was either purchased or that you created. Separate installation of the software product itself or any of its components on individual computers is not part of this licensing agreement. This license is bound to a single natural person and is non-transferable.

O&O BlueCon Tech Edition

You are authorized to use the software product on all computers. This includes computers not owned by the company of the licensee (also known as Service Technician's License). This software product may be used only via the corresponding bootable medium that was either purchased or that you created. Separate installation of the software product itself or any of its components on individual computers is not part of this licensing agreement. This license is bound to a single natural person and is non-transferable.

O&O BrowserPrivacy

Amendment to: 2. Requirements for application (system requirements)

The software requires Windows 8 (all Editions), Windows 8.1 (all Editions), Windows 10 (all Editions) or Windows 11 (all Editions) operating systems. Application within the terms of this contract is not achieved without the use of one of these operating systems. Control of the program through a network management is not possible.

O&O BuildPE

Important note for working with O&O BuildPE

The program overwrites the target storage volume (these volumes include re-writable CDs or USB Sticks, amongst others). Please therefore make absolutely sure that the target volume does not contain any data that you may still require, as the overwriting of this data cannot be reversed!

O&O formally declares that it is not responsible for damages arising from the improper use of O&O BuildPE.

Amendment to: 2. Requirements for application (system requirements)

The software requires Windows 10 (all Editions) or Windows Server 2019 (all Editions) operating systems. Application within the terms of this contract is not achieved without the use of one of these operating systems.

O&O CleverCache

Amendment to: 2. Requirements for application (system requirements)

O&O CleverCache Professional Edition

The software requires Windows 7 (all Editions) operating systems. Application within the terms of this contract is not achieved without the use of one of these operating systems.

O&O CleverCache Server Edition

The software requires Windows Server 2008 (all Editions), Windows 7 (all Editions) or Windows

Server 2008 R2 (all Editions) operating systems. Application within the terms of this contract is not achieved without the use of one of these operating systems.

O&O Defrag

Amendment to: 2. Requirements for application (system requirements)

O&O Defrag Professional Edition

The software requires Windows 8.1 (all Editions), Windows 10 (all Editions) or Windows 11 (all Editions) operating systems. Application within the terms of this contract is not achieved without the use of one of these operating systems. Control of the program through a network management is not possible.

O&O Defrag Server Edition

The software requires Windows 8.1 (all Editions), Windows 10 (all Editions), Windows 11 (all Editions), Windows Server 2012 (all Editions), Windows Server 2012 R2 (all Editions), Windows Server 2016 (all Editions), Windows Server 2019 (all Editions) or Windows Server 2022 (all Editions) operating systems. Application within the terms of this contract is not achieved without the use of one of these operating systems. The O&O Defrag Server Edition may be used on computers with or without the user interface. You are entitled to control this program over the separately obtainable network manager.

O&O Defrag Virtual Machine Edition

The software may only be used on the appropriate operating system in accordance with the previously mentioned conditions for the Server Edition. You must own a minimum of one Server Edition to use a Virtual Machine Edition.

O&O DiskImage

Amendment to: 2. Requirements for application (system requirements)

O&O DiskImage Express Edition

The software requires Windows 8.1 (all Editions), Windows 10 (all Editions) or Windows 11 (all Editions) operating systems. Application within the terms of this contract is not achieved without the use of one of these operating systems. Control of the program through a network management is not possible.

O&O DiskImage Professional and Special Edition

The software requires Windows 8.1 (all Editions), Windows 10 (all Editions) or Windows 11 (all Editions) operating systems. Application within the terms of this contract is not achieved without the use of one of these operating systems. Control of the program through a network management is not possible.

O&O DiskImage Server Edition

The software requires Windows 8.1 (all Editions), Windows 10 (all Editions), Windows 11 (all Editions), Windows Server 2012 (all Editions), Windows Server 2012 R2 (all Editions), Windows

Server 2016 (all Editions), Windows Server 2019 (all Editions) or Windows Server 2022 (all Editions) operating systems. Application within the terms of this contract is not achieved without the use of one of these operating systems. The O&O DiskImage Server Edition may be used on computers with or without the user interface. You are entitled to control this program over the separately obtainable network manager.

O&O DiskImage Virtual Machine Edition

The software may only be used on the appropriate operating system in accordance with the previously mentioned conditions for the Workstation and Server Editions. You must own a minimum of one Server Edition to use a Virtual Machine Edition.

Amendment to: 3. Rights of use, including test versions, unauthorized transfer, and application

Creation and restoration of images

The source computer and each target computer are required to hold licenses, to create and restore images using O&O DiskImage. One license is sufficient under the previously mentioned terms, if the source and the target computer is one non-virtual workstation. Each virtual machine is seen as an independent computer; in other words, each virtual machine needs its own license.

O&O DiskRecovery

Amendment to: 2. Requirements for application (system requirements)

The software requires Windows 8 (all Editions), Windows 8.1 (all Editions), Windows Server 2012 (all Editions), Windows Server 2012 R2 (all Editions), Windows 10 (all Editions), Windows Server 2016 (all Editions) or Windows Server 2019 (all Editions) operating systems. Application within the terms of this contract is not achieved without the use of one of these operating systems.

The product at hand can only be used according to its acquired license. The following license types exist for O&O DiskRecovery:

O&O DiskRecovery Professional Edition

You are authorized to install and use the software product on only one computer. This should be used wholly in conjunction with all hardware in your possession, i.e. this license may not be used to provide a service to a third party. Other limitations may apply in the software itself. Please consult the software documentation for more information on these limitations.

O&O DiskRecovery Admin Edition

You are authorized to install and use the software product on all computers a) in the possession of the company (legal person or natural person(s) in the case of corporations) owning the license and b) all located at a single site. This should be used wholly in conjunction with all hardware in your possession, i.e. this license may not be used to provide a service to a third party. This software product may be used only via the corresponding bootable medium that was either purchased or that you created. Separate installation of the software product itself or any of its components on individual computers is not part of this licensing agreement. This license is bound to a single natural person and is non-transferable.

O&O DiskRecovery Tech Edition

You are authorized to install and use the software product on all computers. This includes computers that do not belong to the company owning the license (also known as Service Technician's License). This software product may be used only via the corresponding bootable medium that was either purchased or that you created. Separate installation of the software product itself or any of its components on individual computers is not part of this licensing agreement. This license is bound to a single natural person and is non-transferable.

O&O DiskStat

Amendment to: 2. Requirements for application (system requirements)

O&O DiskStat Professional Edition

The software requires Windows 7 (all Editions) operating systems. Application within the terms of this contract is not achieved without the use of one of these operating systems.

O&O DiskStat Workstation Edition

The software requires Windows 7 (all Editions) operating systems. Application within the terms of this contract is not achieved without the use of one of these operating systems. The O&O DiskStat Workstation Edition may be used on computers with or without the user interface. You are entitled to control this program over the separately obtainable network manager.

O&O DiskStat Server Edition

The software requires Windows Server 2008 (all Editions), Windows 7 (all Editions) or Windows Server 2008 R2 (all Editions), operating systems. Application within the terms of this contract is not achieved without the use of one of these operating systems.

O&O DiskStat Virtual Machine Edition

The software may only be used on the appropriate operating system in accordance with the previously mentioned conditions for the Workstation and Server Editions. You must own a minimum of one Server Edition to use a Virtual Machine Edition.

O&O DriveLED

Amendment to: 2. Requirements for application (system requirements)

O&O DriveLED Professional Edition

The software requires Windows 7 (all Editions) operating systems. Application within the terms of this contract is not achieved without the use of one of these operating systems. Control of the program through a network management is not possible.

O&O DriveLED Workstation Edition

The software requires Windows 7 (all Editions) operating systems. Application within the terms of this contract is not achieved without the use of one of these operating systems. The O&O DriveLED Workstation Edition may be used on computers with or without the user interface. You are entitled to control this program over the separately obtainable network manager.

O&O DriveLED Server Edition

The software requires Windows Server 2008 (all Editions), Windows 7 (all Editions) or Windows Server 2008 R2 (all Editions), operating systems. Application within the terms of this contract is not achieved without the use of one of these operating systems. The O&O DriveLED Server Edition may be used on computers with or without the user interface. You are entitled to control this program over the separately obtainable network manager.

O&O DriveLED Virtual Machine Edition

The software may only be used on the appropriate operating system in accordance with the previously mentioned conditions for the Workstation and Server Editions. You must own a minimum of one Server Edition to use a Virtual Machine Edition.

O&O Enterprise Management Console

Important note on the Microsoft SQL Server

This product uses the Microsoft SQL Server or Microsoft SQL Server Express Edition. To the extent that these programs are part of the installation of this product, the terms of their licensing related to the use of this software will also apply to the terms of this agreement.

The use of Microsoft SQL Server Express Edition is free of charge in conjunction with this product. The purchase of licenses for O&O Enterprise Management Console and related products is separate from any possible purchase of SQL Server products.

Amendment to: 2. Requirements for application (system requirements)

The software requires Windows 8 (all Editions), Windows Server 2012 (all Editions), Windows Server 2012 R2 (all Editions), Windows 10 (all Editions) or Windows Server 2016 (all Editions) operating systems. Application within the terms of this contract is not achieved without the use of one of these operating systems.

O&O EventViewer

Amendment to: 2. Requirements for application (system requirements)

O&O EventViewer Workstation Edition

The software requires Windows 8 (all Editions) operating systems. Application within the terms of this contract is not achieved without the use of one of these operating systems. The O&O EventViewer Workstation Edition may be used on computers with or without the user interface. You are entitled to control this program over the separately obtainable network manager.

O&O EventViewer Server Edition

The software requires Windows 8 (all Editions) or Windows Server 2012 operating systems. Application within the terms of this contract is not achieved without the use of one of these operating systems.

O&O EventViewer Virtual Machine Edition

The software may only be used on the appropriate operating system in accordance with the

previously mentioned conditions for the Workstation and Server Editions. You must own a minimum of one Server Edition to use a Virtual Machine Edition.

O&O FileDirect

Amendment to: 2. Requirements for application (system requirements)

The software requires Windows 10 (all Editions) operating systems. Application within the terms of this contract is not achieved without the use of one of these operating systems.

Amendment to: 3. Rights of use, including test versions, unauthorized transfer, and application Distribution. You may make exact, unmodified copies of this Software Product and distribute such copies solely by electronic means for example, posting on Internet sites for others to download), subject to the following (a) that the software is distributed unmodified (wrapping or packaging the software with a so-called "Installer", "Wrapper" or similar constitutes a forbidden modification for the purposes of this contract) and in its entirety with its complete user documentation, readme files, copyright, trademark, and other indications protecting intellectual property including this license agreement, and all of its other components), and (b) that such transfer may occur anywhere in the world, except when prohibited by laws of the Federal Republic of Germany (directly or indirectly.)

Amendment to: 4. Payment

O&O demands no fee for the use of O&O FileDirect. In addition, a fee for this license and this program may not be demanded by any Third Parties, unless this is done with the expressed approval of O&O. When in doubt, please get in touch with us. You can find our contact data at the end of this license agreement.

O&O MediaRecovery

Amendment to: 2. Requirements for application (system requirements)

The software requires Windows 8 (all Editions), Windows 8.1 (all Editions) or Windows 10 (all Editions) operating systems. Application within the terms of this contract is not achieved without the use of one of these operating systems.

O&O PartitionManager

Amendment to: 2. Requirements for application (system requirements)

O&O PartitionManager Professional Edition

The software requires Windows 7 (all Editions) operating systems. Usage within the terms of this contract is not achieved without the application of these operating systems.

O&O PartitionManager Server Edition

The software requires Windows Server 2008 (all Editions), Windows 7 (all Editions) or Windows Server 2008 R2 (all Editions) operating systems. Application within the terms of this contract is not achieved without the use of one of these operating systems.

O&O RegEditor

Important note for working with the Microsoft Windows Registry

Before making changes to the Microsoft Windows Registry (in the following Registry), you should prepare a backup copy of the Registry and ensure that you'll be able to restore the Registry if a problem should arise.

O&O formally declares that it is not responsible for damages arising from the improper use of O&O RegEdit. Changes to the Registry should only be made by experienced users who are aware of the consequences of such changes. A defective Registry can influence the entire stability of the system and lead to a crash of the computer or make it unable to start. This can further lead to loss of data.

Amendment to: 2. Requirements for application (system requirements)

The software requires Windows 8 (all Editions), Windows 8.1 (all Editions), Windows Server 2012 (all Editions), Windows Server 2012 R2 (all Editions) or Windows 10 (all Editions) operating systems. Application within the terms of this contract is not achieved without the use of one of these operating systems.

Amendment to: 4. Payment

O&O demands no fee for the use of this license. In addition, a fee for this license and this program may not be demanded by any Third Parties, unless this is done with the expressed approval of O&O. When in doubt, please get in touch with us. You can find our contact data at the end of this license agreement.

O&O RescueBox

Amendment to: 2. Requirements for application (system requirements)

The software requires Windows Server 2008 (all Editions), Windows 7 (all Editions) or Windows Server 2008 R2 (all Editions), operating systems. Application within the terms of this contract is not achieved without the use of one of these operating systems.

The product at hand can only be used according to its acquired license. The following license types exist for O&O RescueBox:

O&O RescueBox Personal Edition

You are authorized to install and use the software product on only one computer. This should be used wholly in conjunction with all hardware in your possession, i.e. this license may not be used to provide a service to a third party. Other limitations may apply in the software itself. Please consult the software documentation for more information on these limitations.

O&O SafeErase

Amendment to: 2. Requirements for application (system requirements)

O&O SafeErase – Subscription for 1 year

The software requires the operating system Windows 8.1 (all editions), Windows 10 (all editions) or Windows 11 (all editions). Without the use of such an operating system, contractual use is not guaranteed.

O&O SafeErase Professional Edition

The software requires Windows 8 (all Editions), Windows 8.1 (all Editions), Windows 10 (all Editions) or Windows 11 (all Editions) operating systems. Usage within the terms of this contract is not achieved without the application of these operating systems.

O&O SafeErase Server Edition

You are authorized to install and use the software product on only one computer. This should be used wholly in conjunction with all hardware in your possession, i.e. this license may not be used to provide a service to a third party. Other limitations may apply in the software itself. Please consult the software documentation for more information on these limitations.

The software requires Windows 8.1 (all Editions), Windows 10 (all Editions), Windows 11 (all Editions), Windows Server 2012 (all Editions), Windows Server 2012 R2 (all Editions), Windows Server 2016 (all Editions), Windows Server 2019 (all Editions) or Windows Server 2022 (all Editions) operating systems. Application within the terms of this contract is not achieved without the use of one of these operating systems.

O&O SafeErase Admin Edition

You are authorized to install and use the software product on all computers a) in the possession of the company (legal person or natural person(s) in the case of corporations) owning the license and b) all located at a single site. This should be used wholly in conjunction with all hardware in your possession, i.e. this license may not be used to provide a service to a third party. This software product may be used only via the corresponding bootable medium that was either purchased or that you created. Separate installation of the software product itself or any of its components on individual computers is not part of this licensing agreement. This license is bound to a single natural person and is non-transferable.

The software requires Windows 8.1 (all Editions), Windows 10 (all Editions), Windows 11 (all Editions), Windows Server 2012 (all Editions), Windows Server 2012 R2 (all Editions), Windows Server 2016 (all Editions), Windows Server 2019 (all Editions) or Windows Server 2022 (all Editions) operating systems. Application within the terms of this contract is not achieved without the use of one of these operating systems.

O&O SafeErase Tech Edition

You are authorized to install and use the software product on all computers. This includes computers that do not belong to the company owning the license (also known as Service Technician's License). This software product may be used only via the corresponding bootable medium that was either purchased or that you created. Separate installation of the software product itself or any of its components on individual computers is not part of this licensing agreement. This license is bound to a single natural person and is non-transferable.

The software requires Windows 8.1 (all Editions), Windows 10 (all Editions), Windows 11 (all

Editions), Windows Server 2012 (all Editions), Windows Server 2012 R2 (all Editions), Windows Server 2016 (all Editions), Windows Server 2019 (all Editions) or Windows Server 2022 (all Editions) operating systems. Application within the terms of this contract is not achieved without the use of one of these operating systems.

Amendment to: 3. Use rights, including trial versions and redistribution/use prohibitions
The software is licensed, not sold, and proprietary.

Amendment to: 4. Payment

The license is valid for the period specified in your transaction documentation (subscription period). The license is effective until terminated in accordance with this agreement. If no subscription term is specified in your transaction documentation, the subscription will extend to the standard twelve month period from the time the software was purchased. With the automatic renewal of the subscription period, you accept the license agreement valid at the time of renewal.

O&O SSD Migration Kit

Amendment to: 2. Requirements for application (system requirements)

The software requires Windows 7 (all Editions) or Windows 8 (all Editions) operating systems. Application within the terms of this contract is not achieved without the use of one of these operating systems.

Contact

If you have any questions concerning the O&O Software License Agreement or wish to speak with O&O, please get in touch with us.

O&O Software, Bülowstraße 66, 10783 Berlin, Germany

E-Mail: info@oo-software.com / sales@oo-software.com, Web: www.oo-software.com