

 O&O Software

O&O SafeErase



Table of contents

About O&O SafeErase	11	4
Differences between Editions	5	
Important note before program use	6	
Terminology	7	
Basics on data deletion	9	
Features at a glance	10	
System requirements	13	
Installation and licensing	15	
Information about licensing	16	
Enter license	17	
Online registration	19	
Updates	21	
Uninstall	23	
Getting started	24	
Start O&O SafeErase (user interface)	25	
Start the analysis of your drives	26	
Clean computer	27	
SafeErase files and folders	28	
SafeErase hard disks and partitions	29	
SafeErase free disk space	30	
SafeErase temporary Windows and program files	32	
SafeErase temporary Internet files	34	
Cancel deletion	37	
Securely move files and folders	38	
SafeErase data from Solid State Drives (SSDs)	39	
Reports	40	
Method of deletion	41	
Six methods of deletion	42	
Settings	43	
Standardmethode festlegen	44	
Change settings for reports	45	
Change settings to SafeErase free space	46	
Change other settings	47	
Settings for scope of analysis	48	

SafeErasing the entire computer	50
Start SafeErasing the entire computer	51
Security check	52
Completing the deletion process	53
Use O&O SafeErase via right-clicking	54
SafeErase files and folders via right-clicking	55
SafeErase a hard disks/partitions via right-clicking	56
SafeErase data later by right-clicking	58
SafeErase data from the Windows Recycle Bin via right-clicking	60
Start from the command line	61
Parameters	62
Combining several parameter	66
Frequently asked questions	67
How you can check on the deletion process	68
How you can SafeErase data, which already has been deleted	69
How to act when receiving error notices	70
End user license agreement	71

About O&O SafeErase 11

Welcome to O&O Software. We are pleased that you have chosen O&O SafeErase, our solution to SafeErase your sensitive data.

There are many reasons for SafeErasing data. It becomes very important to remove data completely, for example, if you want to sell your old computer, or give away a hard drive or memory card. You also need to be careful when you want to get rid of your spent company computer or return it to the leasing company. Formatting the volumes is not enough to SafeErase data. Data spies will have a feast while restoring your personal data, e.g. pictures, Emails or your financial data.

O&O SafeErase is the solution to SafeErase sensitive data and therefore offers valuable data protection. O&O SafeErase does not simply erase files, but it destroys them using recognized and recommended methods. You can make sure that your private or business data will not be seen by anybody unauthorized.

The deletion processes employed by O&O SafeErase you can choose from various algorithms to delete files. Methods are offered, which are recommended and used by the US Department of Defense (DoD) and the German Federal Office of Information Security (BSI). In other words, the highest standard in security.

Hackers nor data spies stand a chance to restore your data once it has been deleted with O&O SafeErase.

After using O&O SafeErase on your computer it can be easily sold, given away, or recycled and feel safe about the fact that no data will be reconstructed or accessed.

We are happy to assist you with questions about the use of our products.

Yours O&O Software

www.oo-software.com

Note:

Please bear in mind that data deleted with O&O SafeErase **cannot** be restored, even special restoration software cannot revoke the process! Please make sure that before you SafeErase the data, you really want to delete it or have it stored at a different place as a backup.

Differences between Editions

O&O SafeErase is available in three Editions:

- O&O SafeErase Professional Edition
- O&O SafeErase Workstation Edition
- O&O SafeErase Server Edition

The **Professional Edition** is the version to use for a single PC. It cannot be used on a Server operating system.

The **Workstation Edition** is intended for use on a desktop computer within a company. The Workstation Edition can be controlled over the user interface as well as over command lines. Another special feature of the Workstation Edition is its ability to simultaneously delete free space and partitions on different physical disks. This is different from the Professional Edition, where deletion is performed successively. This allows you to save considerable time when working with large data volumes. We'll also be happy to help you use O&O SafeErase Workstation Edition across a network. Just get in touch with us and we'll show you how.

The **Server Edition** is optimized for a server and can be used on both a server as well as on a desktop computer. You can also control the Server Edition using command lines. Another special feature of the Server Edition is its ability to simultaneously delete free space and partitions on different physical disks. This is different from the Professional Edition, where deletion is performed successively. This allows you to save considerable time when working with large data volumes. We'll also be happy to help you use O&O SafeErase Workstation Edition across a network. Just get in touch with us and we'll show you how.

Important note before program use

If you start O&O SafeErase without previously installing it, e.g. from the O&O-BlueCon CD, then you **won't** be able to use the following program functions:

- Analysis and subsequent clean up of your computer
- Report management
- Temporary Windows and program files cannot be deleted explicitly
- Temporary Internet files cannot be deleted explicitly
- SafeErase via right-clicking
- Secure moving
- SafeErase (empty) Recycle Bin
- SafeErase entire computer

Important!

Please bear in mind that data deleted with O&O SafeErase cannot be restored; even special restoration software cannot revoke the process! Please make sure that before you SafeErase anything that you really want to permanently delete the data or that you have saved a back-up copy in another location (security copy).

Important!

The function SafeErase entire computer erases all data from your computer without additional boot disk type media. Once you have confirmed the execution of this function, all data on your computer will be deleted, after which all data and settings will be lost.

Data deleted just once with O&O SafeErase can never be reconstructed. Even while using specialized software like O&O DiskRecovery. Even the application of special data recovery hardware will not be able to do so.

If there is even a possibility that you might need a specific piece of data, it is strongly advised that you make a back-up copy prior to deletion. Otherwise this data will be lost!

O&O SafeErase is not a toy to be used "just for fun". This program works and will definitely delete your data.

Terminology

SafeErase

If data is SafeErased, then they will be lost forever. Even special restoration software is not able to bring it back. On the other hand, "normally" deleted data can be easily restored, even if you have emptied the Windows Recycle Bin. O&O SafeErase offers various methods for deletion, so that you can SafeErase your data using different methods.

Drive/Partition

A drive is a reserved area of the hard disk. Multiple drives can be found on a hard disk. The term "drive" will be used to depict (single) partitions as well as logical drives in expanded partitions. Drives are used, for example, to separate documents from programs. This makes it easier to image data using data imaging products such as O&O DiskImage. A division into two partitions has become generally accepted:

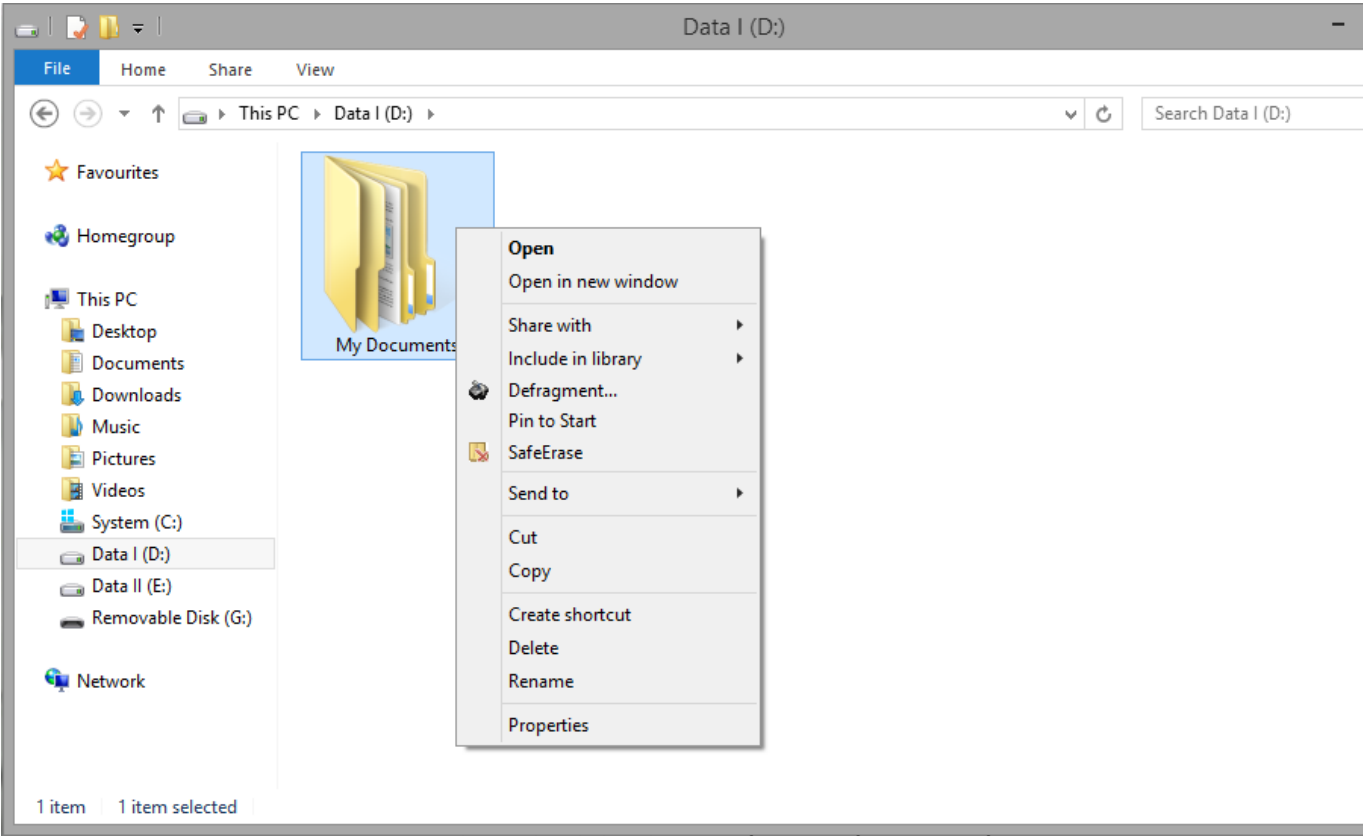
- Drive C: for operating systems and programs
- Drive D: for documents, e.g. photos, Office documents, music, etc.

Temporary files

The operating system often buffers files temporary to unburden the memory. For example, temporary files are needed and created for the quick access bar of last opened documents or for the picture preview in the miniature view. Even if you SafeErase individual files, some of that information still exists as a temporary file - a restoration cannot be excluded. Normally, these temporary files are automatically deleted after having been used. Yet, even those deleted temporary files can be restored. To make sure that these temporary files do not cause any damage we recommend removing them with O&O SafeErase.

Context menu

As a rule, the context menu will open, whenever you right-click on an object (picture, word, interface etc.). O&O SafeErase is integrated in the context menu as "SafeErase". As a result, you can also execute your deletion from there.



Context menu (via right-clicking) entry of O&O SafeErase "SafeErase"

Basics on data deletion

Deleting is more complicated than it sounds. Moving a file to the Recycle Bin and then emptying the Bin doesn't really delete the file from the hard disk. The directory entry is removed, but the data itself remains on the hard disk and can therefore be restored. Formatting a partition is also not usually enough. Even a low level-formatting on the BIOS level is no secure solution, since data - even if it requires more effort - can always be reconstructed.

Features at a glance

Compatible with Windows 10 and Microsoft Edge Browser

O&O Software guarantees that its top products will function under Windows 10

Shut down after deletion is complete

O&O SafeErase now offers you the option to shut down the computer automatically once a deletion has completed.

Analyzes your entire computer for data which hasn't been SafeErased yet

A special algorithm scans the computer for files, which have been SafeErased, have been created temporarily or have been stored in your Internet Browser. After the analysis you will get a detailed list of files, which haven't been SafeErased and pose a risk for your private sphere. Based on the graphical status display you will see the potential risk which an unsafe deletion of data may pose. A few clicks allow you to clean up your computer, so that no temporary and assumed deleted files can be restored.

SafeErase data of Solid State Drives (SSDs)

The frequent deletion and overwriting of files influences the life span of SSDs. It is not possible to run indefinite writing access on the memory cell of a SSD. O&O SafeErase offers a sensitive method to delete files irrevocably from SSDs. The data on a SSD is deleted via TRIM commands. The data cannot be restored anymore.

Enhanced report management

The enhanced report management allows you to manage reports individually. If you want to SafeErase your entire computer, you can specify an external storage medium to save the deletion log. Otherwise, the report would also be deleted.

Adapted user interface

The user O&O SafeErase interface was simplified and leads to a more intuitive deletion.

Enhanced command processing

In addition to the already known commands for O&O SafeErase via the command line, new and helpful functions have been added.

Three Editions: Professional, Workstation and Server Edition

Along with the Professional Edition that's ideal for home use, we're now offering the new Workstation and Server Editions that are optimized for operation in company's of any size.

A special feature of the **O&O SafeErase Workstation and Server Editions** is their ability to simultaneously delete free space and partitions on different physical disks. This varies from the Professional Edition, where deletion is performed successively. Using simultaneous deletion can save considerable time, especially when working with large data volumes.

SafeErase files and folders

Windows doesn't delete data correctly. Even formatting your hard disk is not enough to permanently delete your data. You don't have access to it right away, but unauthorized access is still possible using special reconstructing software. O&O SafeErase deletes your data using processes which are recommended by the US Department of Defense or the Federal Office for Information Security of Germany.

SafeErase hard disks and partitions

O&O SafeErase not only facilitates the permanent deletion of individual files and folders, but also entire partitions and hard disks. All information regarding the drives and saved on the drives will be SafeErased. The drives will later be shown as empty spaces on the hard disk.

SafeErase free disk space

If you don't want to SafeErase all data on a drive you can apply the function "SafeErase free space". All of your visible data on a drive will remain intact and only the "free areas" will be overwritten several times by O&O SafeErase so that the data cannot be restored ever again.

You can SafeErase the free space in each selected drive.

SafeErasing the entire computer

The function SafeErase entire computer enables you to delete an entire computer, without having to create a start medium (e.g. disks or CD-Rs). All data, settings, programs, etc. will be permanently deleted - a restoration will be impossible.

Deleting your entire computer enables you to SafeErase your data when you sell, give away, or throw away your computer. You can rest assured that nobody will be able to restore and abuse your data.

Use O&O SafeErase via right-clicking

O&O SafeErase integrates itself into your Windows Explorer. You can access O&O SafeErase via right-clicking.

Method of deletion

You can use the procedure to delete selected files based on their importance and the time required by six different methods. Each method offers another security level.

Securely move files and folders

While securely moving the source file to another folder, it will be SafeErased in its original location.

SafeErase data from the Windows Recycle Bin

Besides permanently deleting files and folders, O&O SafeErase also deletes the contents of the Windows Recycle Bin. This comes in handy, because normally all files, which you usually do not need anymore, are collected there.

Start from the command line

Allows for the automation of repeating activities.

Manage individual deletion lists

With the help of deletion lists it is possible to save activities e.g. permanently deleting free space of one or more drives and run these activities at the next start of O&O SafeErase.

SafeErase temporary Windows and program files

Temporary files are files created with a limited life span. These are created most often by Windows and other programs to relieve the memory, e.g. during an installation created in a folder. Sometimes these files will not be deleted automatically though.

Even if you SafeErase individual files, some of that information still exists as a temporary file - a restoration cannot be excluded. Normally, these temporary files are automatically deleted after having been used. Yet, even those deleted temporary files can be restored. To make sure that these temporary files do not cause any damage we recommend removing them with O&O SafeErase.

With just a few clicks you can command O&O SafeErase to SafeErase all temporary Windows and program files. You are also able to select which specific temporary file to delete.

SafeErase temporary Internet files

O&O SafeErase enables you to also SafeErase sensitive Internet data. Various Internet Browser, like Microsoft Internet Explorer, Mozilla Firefox or Google Chrome will be displayed automatically. The user can select which type of Internet files, e.g. Cookies, browser history or form data should be deleted.

Reports

As evidence for the deletion process you will have detailed reports available.

Supports multi core processors

Multi core processors are recognized and supported by O&O SafeErase.

System requirements

O&O SafeErase does not specify specific requirements for the proper use of the program functions.

- The system requirement of each operating system have to be fulfilled
- 40 MB free hard disk space
- Supports 32 and 64-bit operating systems
- Supports multi core processors
- .Net Framework 4.6.1
- Windows® Vista till Windows® 10 (all editions),
- Windows® Server 2008 till Windows® Server 2016 (all editions):

Supported operating systems

Operating system	Professional Edition	Workstation Edition	Server Edition
Windows® 10	yes	yes	yes
Windows® 8/8.1	yes	yes	yes
Windows® 7	yes	yes	yes
Windows® Vista®	yes	yes	yes
Windows® Server 2008*	no	no	yes*
Windows® Server 2008 R2*	no	no	yes*
Windows® Server 2012*	no	no	yes*
Windows Server 2012 R2*	no	no	yes*
Windows Server 2016*	no	no	yes*

*Core installations are excluded

Supported Browser	Versions
Microsoft Edge®	20-38
Internet Explorer®	6-11
Mozilla FireFox®	31-52
Mozilla FireFox® Extended Support Release (ESR)	31-52
Google Chrome®	30-57

Note:

Please bear in mind that you need the .Net Framework 4.6.1 in order for O&O SafeErase to work properly.

Access permissions

You must be a member of your system's local administrators group or possess comparable permissions in order to install and register O&O SafeErase. Domain Administrators normally already

possess these permissions.

Installation and licensing

The installation of O&O SafeErase is very simple. Please follow the steps below:

1. Turn on the computer on which you would like to install O&O SafeErase.
2. Login as a local Administrator.
3. Insert the data medium with the required software in its respective disk drive, e.g. your CD-ROM drive, or start the installation file provided (SETUP.EXE).
4. Please follow the installation guide and confirm the End-User license Agreement (EULA). Please read it carefully before the installation - it is binding.
5. To complete the installation of the program, please restart your computer, if you have not been prompted to do so already.

Information about licensing

Note:

In order to activate the product after installation or to gain access to the Full Version at a later time, you must possess a valid license key. This license key is also called a registration code, serial number, or product ID.

O&O SafeErase needs to be licensed per computer; in other words, you have to purchase a license for each computer where you want to employ O&O SafeErase.

If you do not enter a valid license key, you will only be able to use O&O SafeErase as a trial version with a limited functionality.

If you would like to implement O&O SafeErase in your company or as a technician for your customers, then please contact one of our resellers or our Sales Department.

Enter license

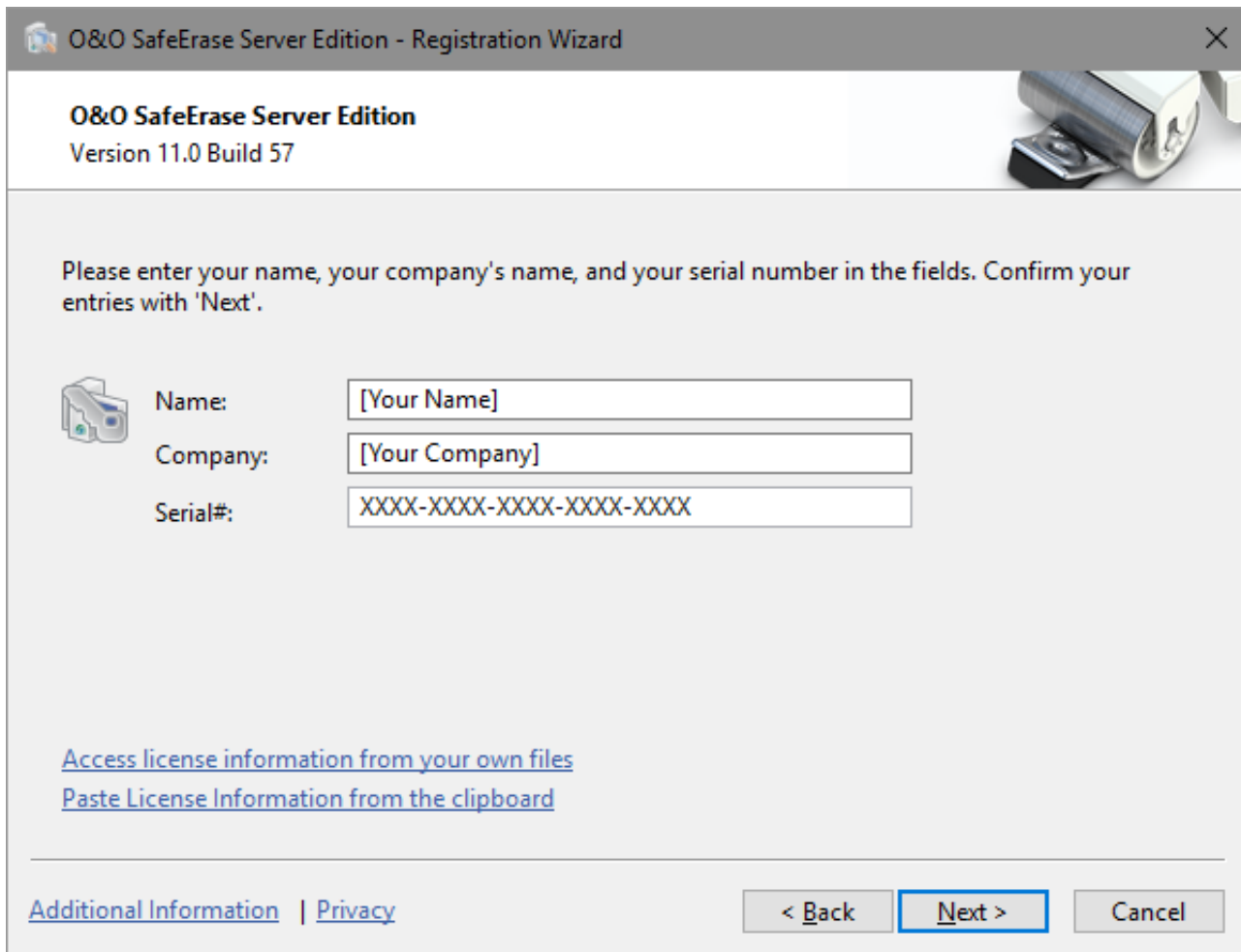
The dialogue for registration always appears automatically at the start to guide you if you are using an unregistered version or have entered the registration code incorrectly.

1. The registration wizard allows for a simple registration process.
2. When you select the option **I want to enter my license**, a dialog box will appear where you can enter the registration code you received when purchasing the software.
If you have purchased the **download version** of the software, please enter the license information (name, company and license key), just as they are written in the confirmation E-Mail you received.
If you have purchased the **box version** of the software, please enter the license key as it is written on the license card included. In addition, please enter your name and if needed your company.
3. Please make sure that you do not confuse the digit "1" with "l" or enter any empty spaces where they don't belong.
4. Press **Next** to save the registration data or **Cancel** to leave the dialog window without saving the data.
5. When you have correctly entered the license code you will receive a confirmation in the dialog window.

If you encounter problems while entering your license key, please contact our Support: support@oo-software.com

Note:


If you do not enter a valid license key, you will only be able to use O&O SafeErase as a trial version with a limited functionality.



O&O SafeErase Server Edition - Registration Wizard

O&O SafeErase Server Edition
Version 11.0 Build 57

Please enter your name, your company's name, and your serial number in the fields. Confirm your entries with 'Next'.

 Name:

Company:

Serial#:

[Access license information from your own files](#)
[Paste License Information from the clipboard](#)

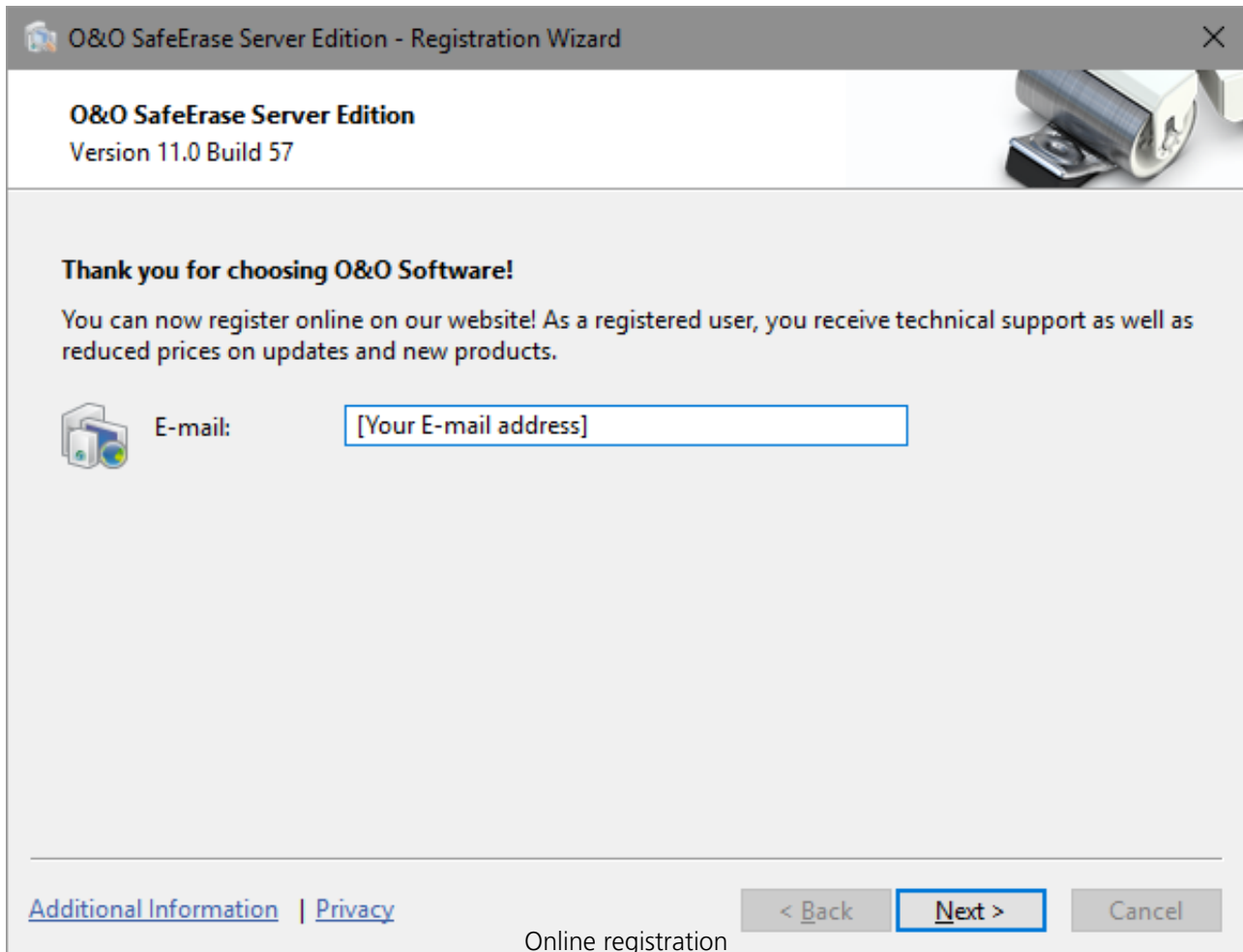
[Additional Information](#) | [Privacy](#)

< Back **Next >** Cancel

Registration wizard: Enter the license key

Online registration

To register online, you'll need the license key you received when you purchased the program. To register online, start. The questions related to online registration always appear at the start, provided you haven't registered online.



O&O SafeErase Server Edition - Registration Wizard

O&O SafeErase Server Edition
Version 11.0 Build 57

Thank you for choosing O&O Software!

You can now register online on our website! As a registered user, you receive technical support as well as reduced prices on updates and new products.

E-mail:

[Additional Information](#) | [Privacy](#)

[Online registration](#)

< Back **Next >** Cancel

What are the advantages of online registration?

Online registration gives you the benefit of having your customer data kept safely in our files, which means we can provide you with even better service. If, for example, you accidentally lose your license key, we can quickly resend it to you without any problem. The license key is needed for using the full version of a program, getting updates, and for reinstalling the program when you make a new setup of your computer.

Further advantages will let you:

- Be supplied with the latest information about our products
- Make free updates on new versions of purchased items (minor updates)
- Upgrade to a new version at a special discount price (major update)
- Obtain support from our customer service

How do I register online?

If O&O SafeErase was purchased on our Online Shop, you've automatically registered with us. If O&O SafeErase 7 purchased at a retailer, you will be asked if you want to register while entering the license information. You then have the option of either registering immediately or at another time. All you'll need is a functioning Internet connection and a valid license key.

You may also complete the registration form right here:

<http://www.oo-software.com/register>

Just return the completed online form by clicking "Send" and you'll be eligible to take full advantage of our O&O Customer Service.

Updates

By clicking **Update**, you can check if you're using the latest version of the program. If a newer program version is available, you can select to find out about it on our website.

So-called "Minor Updates" (Version 11.0 to 11.1, 11.5, etc.), where smaller changes in the program have been made, are free. "Major-Updates", such as from version 10 to 11, must generally be purchased.

- If you decide to upgrade, download the current program version from our website under ([Downloads](#)) and save the installation file on your computer.
- Your license data will normally be saved during Minor Updates so you won't have to enter them again after a successful installation. To be on the safe side, we do recommend keeping your license key for the current version within easy reach - just in case you run into trouble.
- "Major Updates" will require the new license that you receive upon purchasing the software.

To install an update, please do the following:

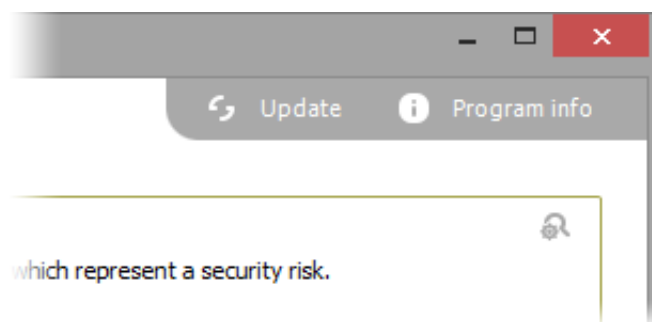
1. Double-click the O&O SafeErase installation file to start the new installation.
2. Follow the installation dialogs.
3. Once finished, the new version is fully installed.
4. Restart the computer when prompted to do so.
5. Before starting O&O SafeErase for the first time enter your license key when prompted to do so.

Note

If you do not have your license key at hand, contact our Support: support@oo-software.com

Tip

Information about your installed program version and the license data (if you have it) can be found under **Program info**.



Update and Program Info

Note

You won't be able to use the Update function if you're using O&O SafeErase as a component of a Boot CD, such as O&O BlueCon.

Uninstall

To remove O&O SafeErase from your PC, please follow the instructions below:

1. Open the **Control Panel** in the Windows start menu and then click on **Software**.
2. Select **O&O SafeErase** from the list and then click on (depending on the OS) **Uninstallation** or **Add/Remove**.
3. Confirm the uninstallation. You'll receive a confirmation notice when uninstallation is completed. When prompted, restart your computer.

Getting started

O&O SafeErase offers you a whole new arsenal of features to SafeErase data. Besides deleting partitions and an entire computer you can also move files and folders securely. More regarding this in the paragraphs to follow.

There are two methods for using O&O SafeErase.

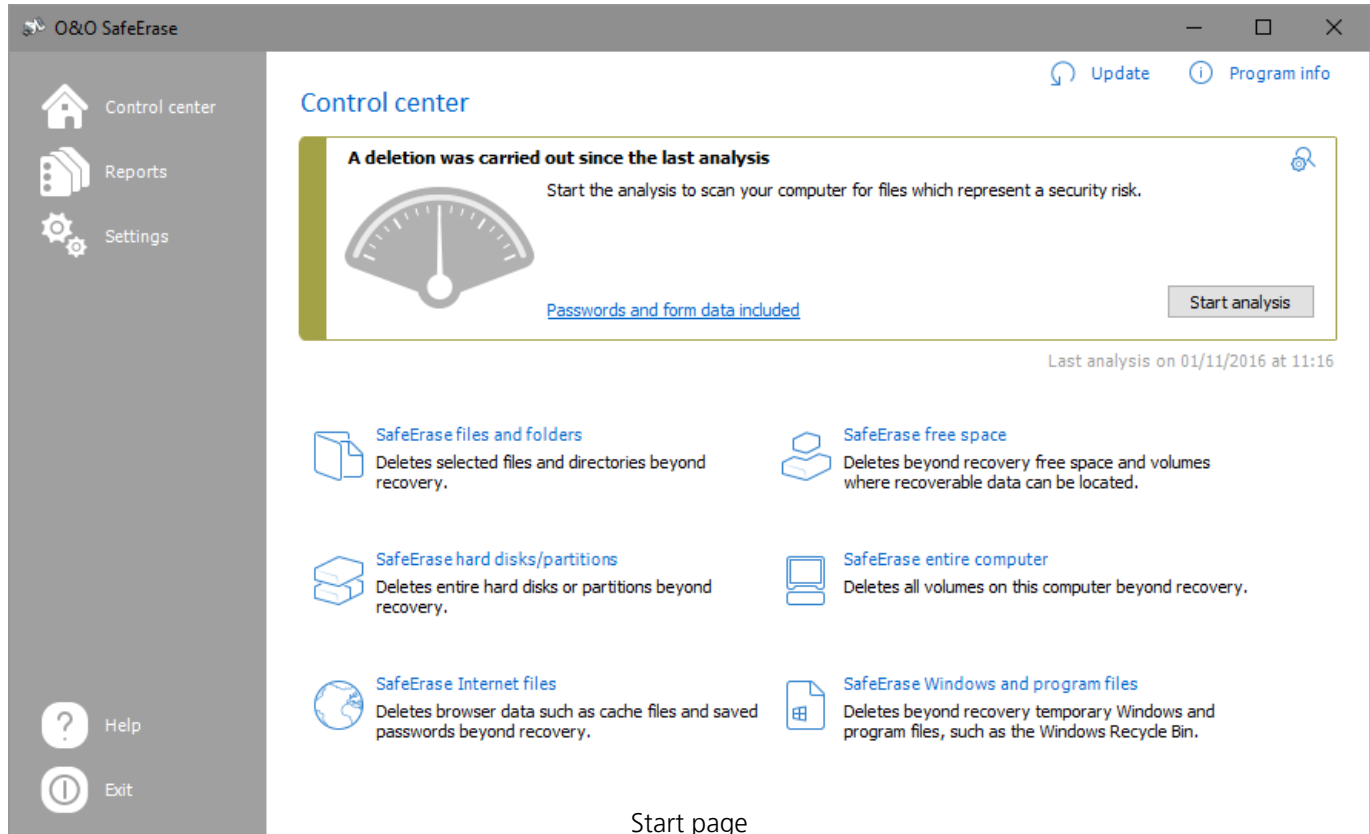
- Start O&O SafeErase under **Start/All Programs/O&O Software/O&O SafeErase**.
- [Through Windows Explorer](#) (via right-clicking)

Tip

To increase your chances to a successful deletion process, close all program before the starting the deletion.

Start O&O SafeErase (user interface)

1. Start O&O SafeErase under **Start/All Programs/O&O Software/O&O SafeErase**.
2. From the start page (control center) you can reach all main functions of O&O SafeErase.



Start the analysis of your drives

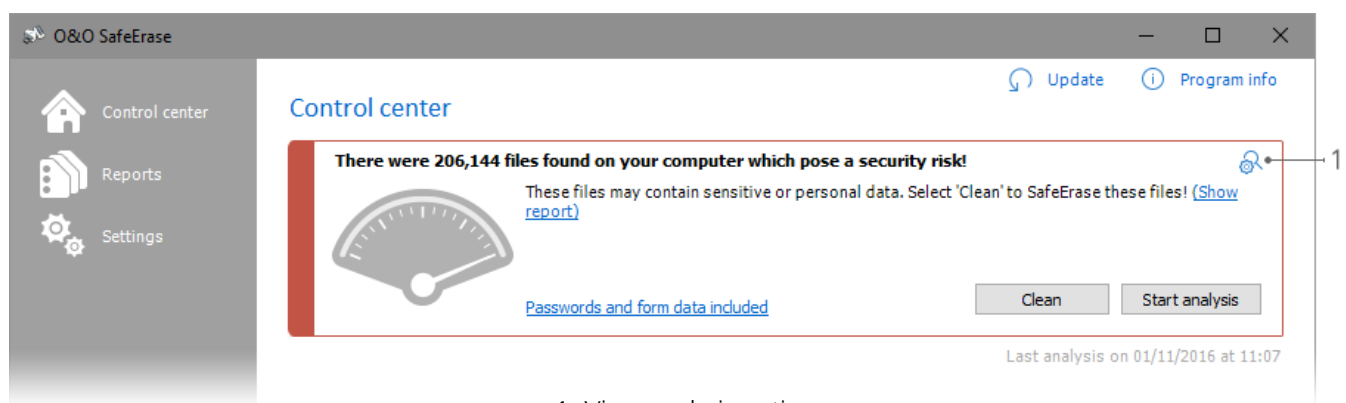
On the O&O SafeErase start page, you have the possibility to scan your entire computer for unsafely deleted and temporary files.

1. Click on **Start analysis**, to begin the scan.
2. You'll then see an overview of the number of files found.

Setup scope of analysis

You can select those file types that should not be considered in the analysis.

1. To do this, click the icon **Analysis settings** or the link **Passwords and form data included/excluded** before you begin the analysis.
2. You'll then see a list of the Scope of analysis.
3. You can now place a check next to the file types you want to SafeErase individually.
4. When you then start the analysis, only the selected file types will be considered during the scan.



1: View analysis options

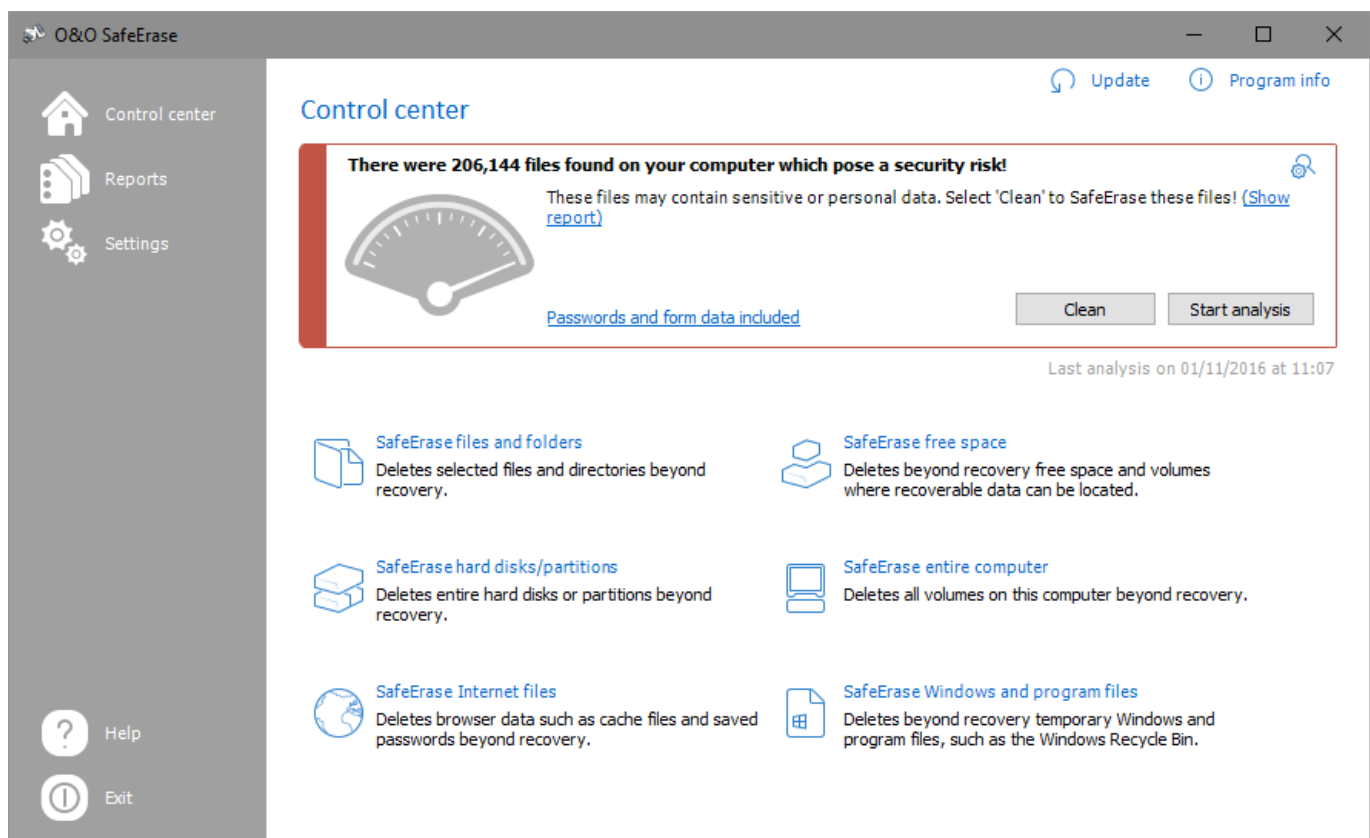
Clean computer

After the analysis you can clean your computer with just a few clicks. All files referred to in the analysis will be SafeErased.

1. If you click on **Clean** after the analysis, you will get to select the deletion method. The lowest deletion method is set as default.
2. After selecting the deletion method you can start the deletion with **SafeErase now**. All listed files will be permanently deleted.

Important!

Check if you really want all files found to be SafeErased. The deletion list with the file types will be presented to you when selecting the method of deletion. Individual files will be listed in the report, which you can access via **Show report**.

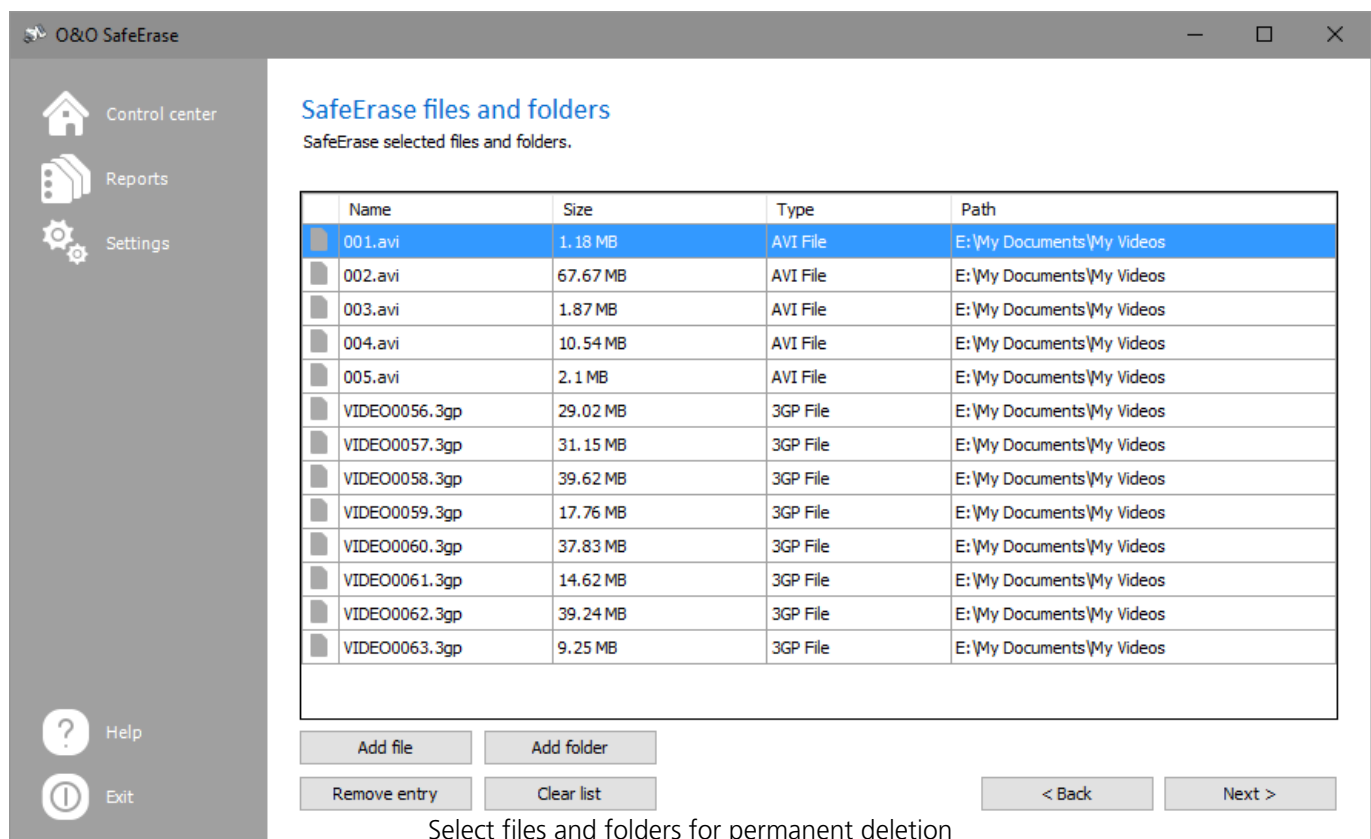


Clean computer

SafeErase files and folders

With O&O SafeErase you can permanently destroy files and folders. It will not be possible to reconstruct them even using special data rescue software.

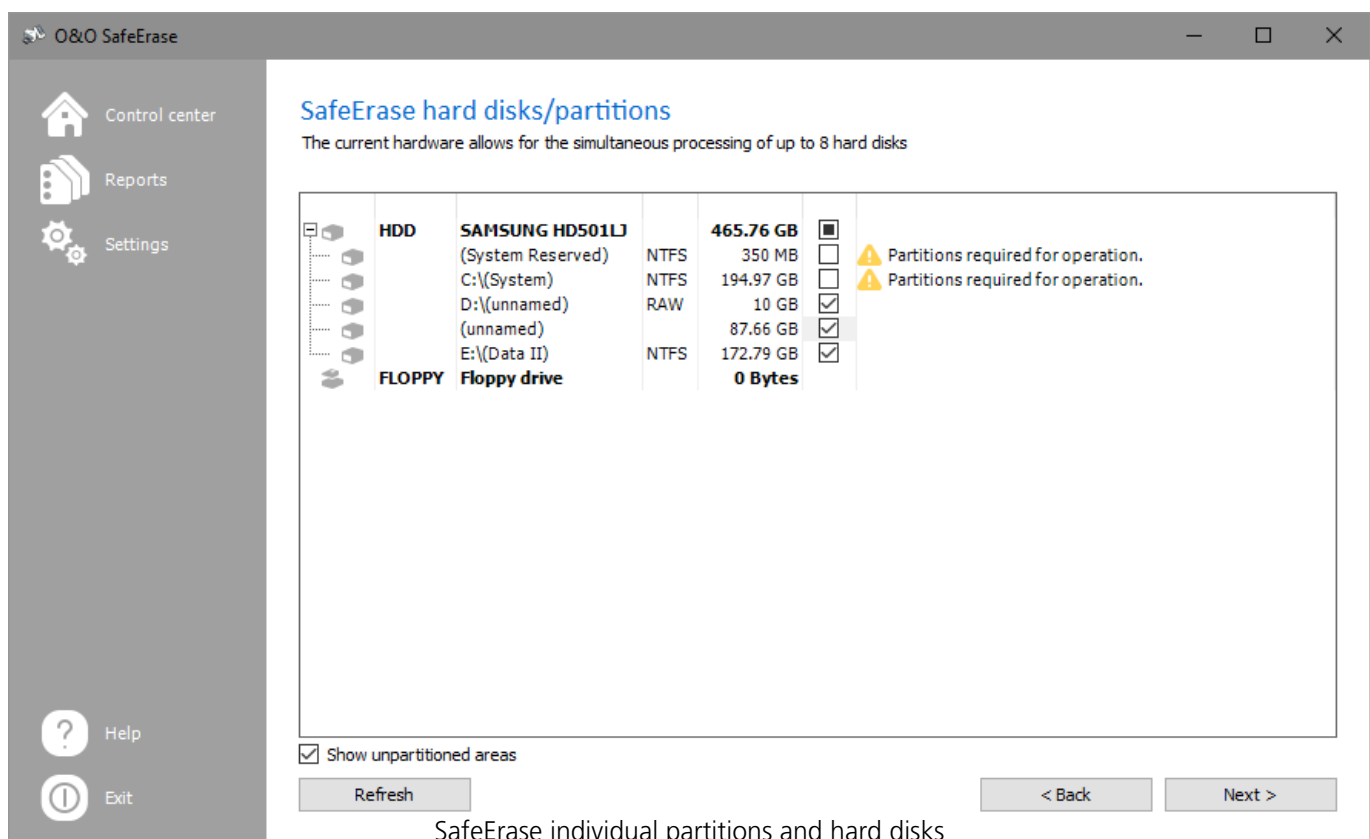
1. On the start page select SafeErase files and folders.
2. With **Add file** or **Add folder** you select the files or folders you want to SafeErase in Windows Explorer.
3. By clicking on **Next** you will get to selection of the Deletion method.
4. After selecting the deletion method you can start the deletion with **SafeErase now**. All listed files will be permanently deleted.



SafeErase hard disks and partitions

O&O SafeErase not only facilitates the permanent deletion of individual files and folders, but also entire partitions and hard disks.

1. In the start page click on **SafeErase hard disks/partitions**.
2. Place a check next to the partition (drive) or the hard disk, which you want to SafeErase.
3. By clicking on **Next** you will get to selection of the Deletion method.
4. After selecting the deletion method you can start the deletion with **SafeErase now**.



Only in the Workstation and Server Editions:

A special feature of the Workstation and Server Editions is their ability to simultaneously delete partitions on dissimilar physical disks or entire hard disks. This is different than in the Professional Edition where deletion is performed successively. If, for example, you have an internal hard disk and a USB Stick connected, O&O SafeErase Workstation and Server Editions can delete both disks at the same time. This can save you a considerable amount of time when working with large data volumes.

SafeErase free disk space

You have generally already deleted data before installing O&O SafeErase. In order to be safe, and make sure that this data will never be reconstructed, O&O SafeErase includes a feature that wipes your free space clean. This enables you to SafeErase data even after a regular deletion.

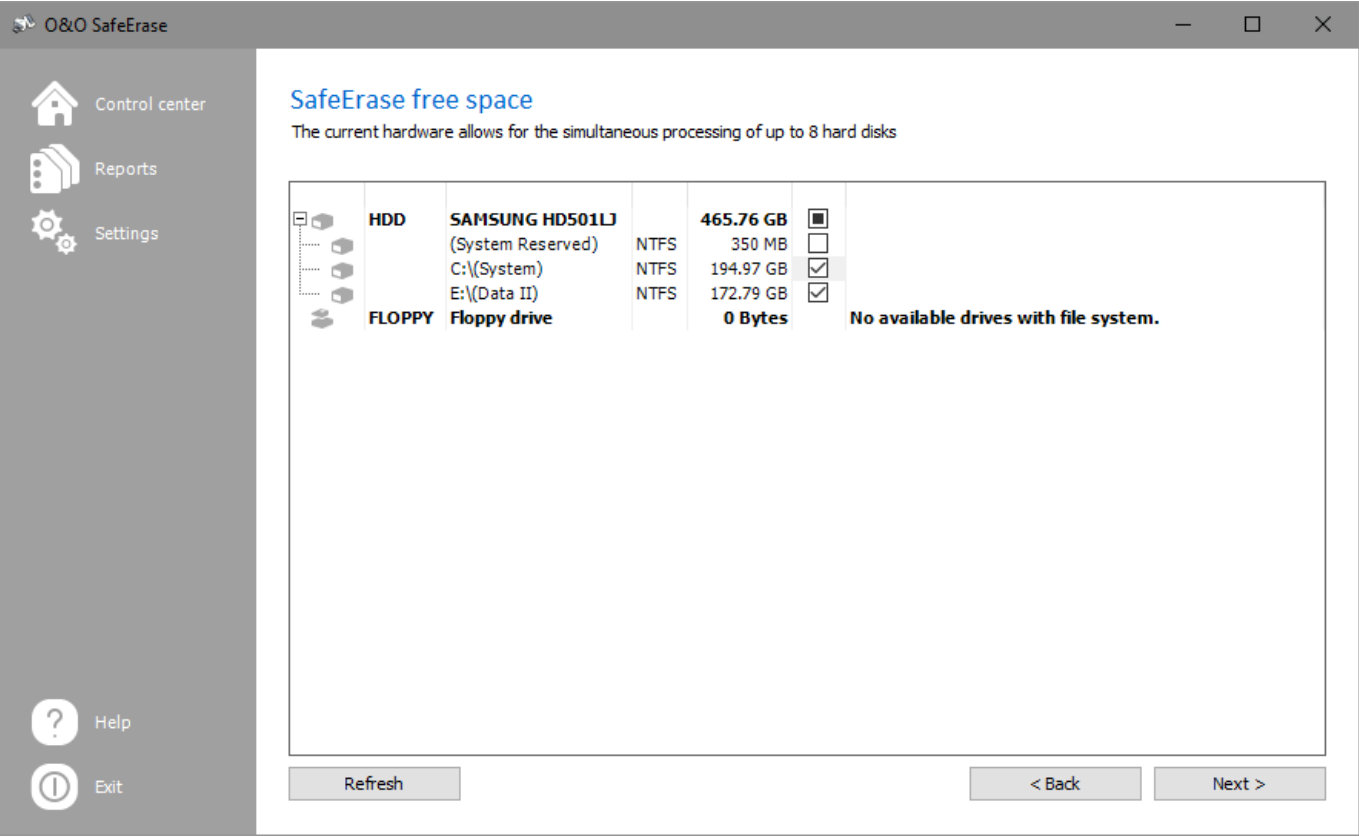
Note

Data, which is located in the Windows Recycle Bin, will not be considered during this function and remain intact. If you want to SafeErase this data, empty the Windows Recycle Bin before or delete your files immediately with the key combination Shift+Del. This will result in data being deleted directly, and not via the Recycle Bin. Otherwise, the files will not be SafeErased with this function.

1. Select the activity **SafeErase free space** on the start page.
2. In the dialog window, select the partition (drive) or the entire hard disk whose free space you want to SafeErase.
3. Click **Next** to continue with the deletion.
4. Select the deletion method.
5. Start the deletion process with **SafeErase now**.

For Server and Workstation Editions only:

A special feature of the Workstation and Server Editions is their ability to simultaneously delete free space from multiple physical disks. This is different from the Professional Edition where deletion is performed successively. If, for example, your computer has an internal hard disk and a USB disk connected, O&O SafeErase Workstation and Server Editions will be able to delete both disks simultaneously. This will let you save a considerable amount of time when working with large data volumes.



SafeErase free space

SafeErase temporary Windows and program files

The operating system often buffers files temporary to unburden the memory. Normally, these temporary files are automatically deleted after having been used. Yet, even those deleted temporary files can be restored. Even if you SafeErase individual files, some of that information still exists as a temporary file - a restoration cannot be excluded. To make sure that these temporary files do not cause any damage we recommend removing them with O&O SafeErase.

With just a few clicks you can command O&O SafeErase to SafeErase all temporary Windows and program files. You are also able to select which specific temporary file to delete.

1. On the start page of O&O SafeErase click on **SafeErase temporary Windows and Program files**.
2. A selection of Windows and program files appears. Activate the check for the desired options.
3. By clicking on **Next** you will get to selection of the Deletion method.
4. After selecting the deletion method you can start the deletion with **SafeErase now**. All listed files will be deleted irrevocably.

Selection of the Windows files

Shortcut to last accessed files

Temporary Windows files

Image preview cache

Content of the Windows Recycle Bin
Kernel memory dumps

Stored data from CheckDisk

Stored FTP access data from Explorers

Adobe Flash Player Cookies

Explanation

Permanently deletes the displayed shortcuts to files, which were just opened, e.g. the shortcuts displayed in the Windows start menu

Windows sometimes stores temporary information in the folder TEMP. Normally, temporary information is deleted when Windows shuts down. You can permanently delete temporary files, which have not been modified for a week, without hesitation.

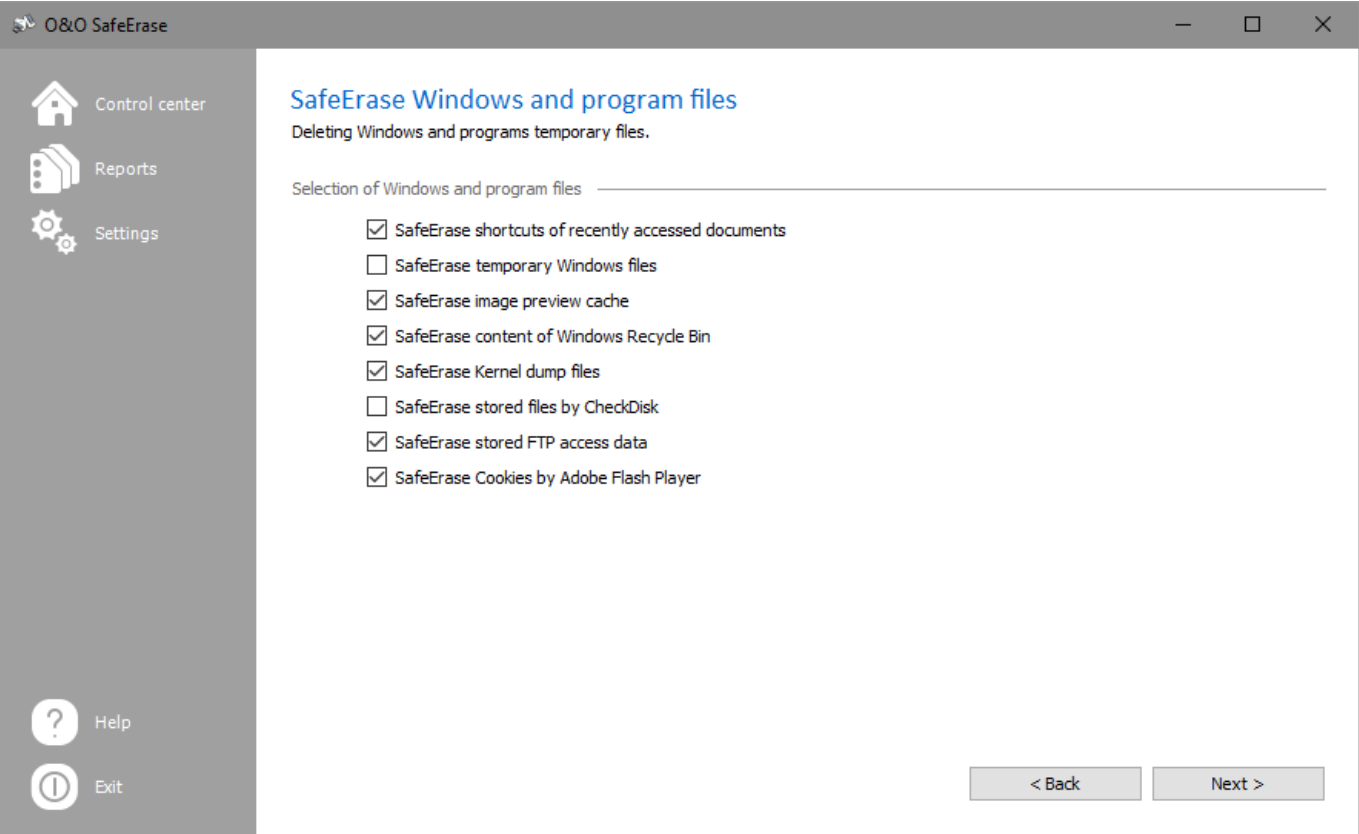
Permanently deletes thumbnails - the preview of pictures from the cache. The cache enables the quicker preview of pictures, using the miniature view for example.

Removes files from the Windows Recycle Bin. Permanently deletes the copy of the storage content, which is saved in Windows in a file with the filename extension DMP, whenever Windows creates a storage statement for critical errors.

Permanently deletes files stored by CheckDisk due to system errors.

Removes the access data from FTP-Server stored in the Registry. (Path and password)

Permanently deletes the Cookie files from Adobe Flash Player.



SafeErase temporary Windows and program files

SafeErase temporary Internet files

Temporary Internet files are automatically created by your browser, whenever you use it. It is therefore retroactively traceable, which Internet pages have been visited by you. Sometimes, even login data is saved on your computer. If you want to SafeErase these temporary data, proceed as follows:

Note

You can find the list of the supported Browser types in the **System requirements**.

1. Click **SafeErase temporary Internet files** on the O&O SafeErase start page.
2. All the browsers installed on your computer are listed.
3. Select the options you want to apply.
4. After clicking **Next**, you'll be able to select the deletion method.
5. After selecting the deletion method, you can begin deletion with **SafeErase now**. All the files listed will be permanently deleted.

SafeErase cookies and saved website data

SafeErase bookmarks

SafeErase download history

SafeErase cached data and files

SafeErase browsing history

SafeErase form data and passwords

SafeErase entered URLs

SafeErase site-specific preferences

SafeErase cookies

SafeErase internet history

SafeErase bookmarks

SafeErase Cache

SafeErase form data and passwords

SafeErase site-specific preferences

SafeErase download files history

SafeErase cookies

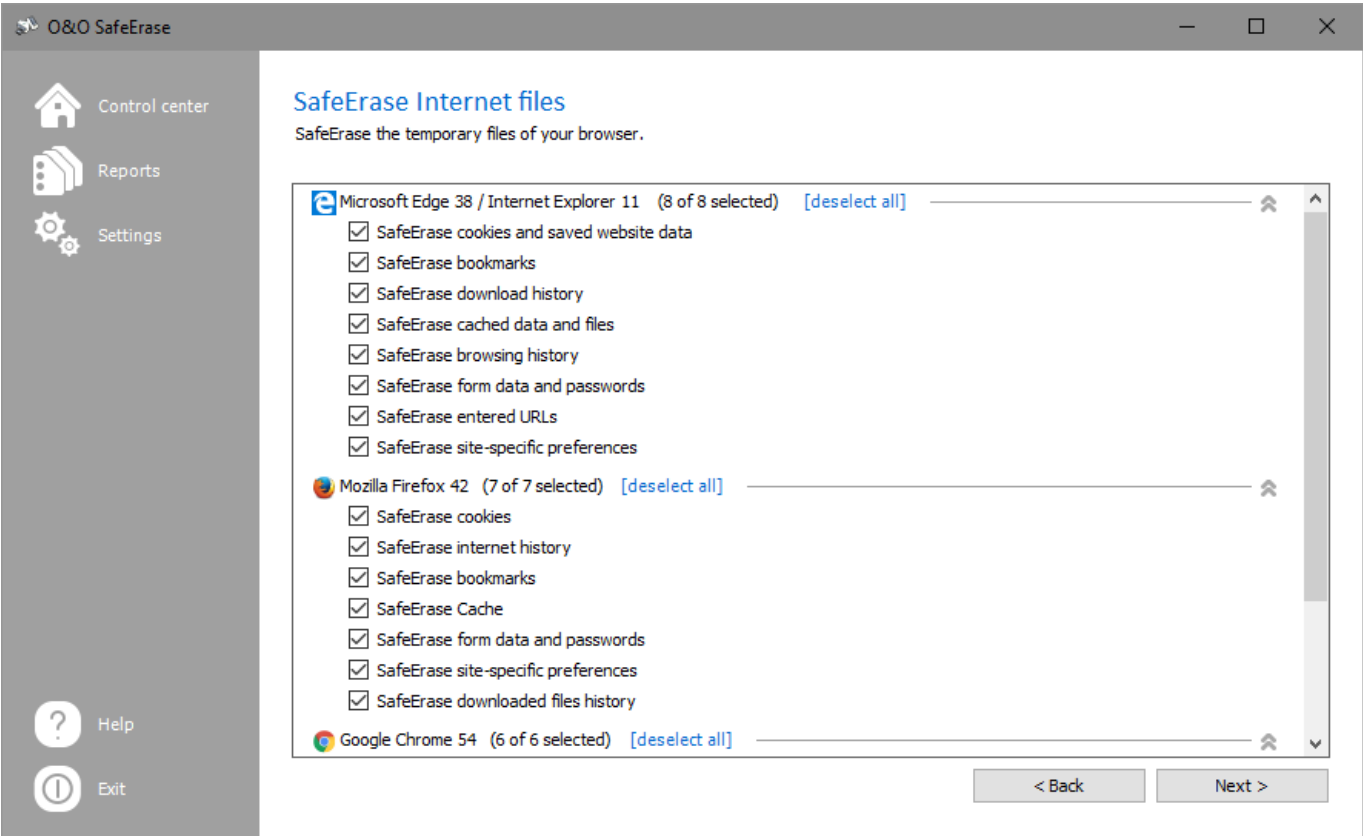
SafeErase extention cookies

SafeErase stored form data and passwords

SafeErase internet cache

SafeErase internet history

SafeErase bookmarks



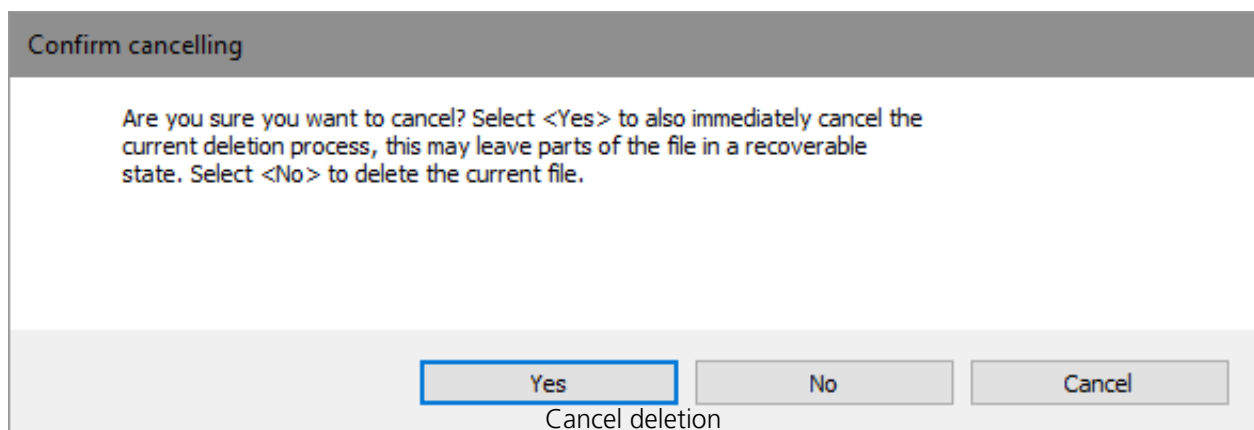
SafeErase Internet files

Cancel deletion

The following dialog box shows you the progress of the deletion process. A detailed log can be found in **Reports**. A TrayIcon will be displayed, if you minimize the window. It will inform you on the status of the deletion process.

If you want to cancel a running deletion, you have the following options:

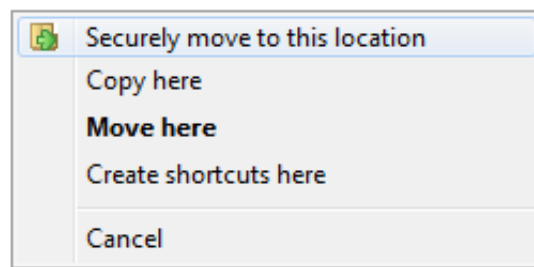
- If you click on **Stop**, the program will ask, if you want to cancel immediately.
- If you say **Yes**, the actual process will be stopped with some files still in restorable condition.
- Should you say No, however, the last file will be completely removed and then the process will be aborted.
- Clicking **Cancel** will resume the deletion process.



Securely move files and folders

While moving files and folders, the data at the source is deleted and pasted at the target location. Still, some file information remains in the source location and are therefore not SafeErased - it is possible to restore them yet.

You can either manually copy the data and then use O&O SafeErase to SafeErase them from the source. Or you use the function **Securely move to this location**, which copies the data just like the regular command, but then SafeErases them from the source location. This makes it impossible to reconstruct data from there.



Context menu (right click) to move securely

To securely move follow the instructions below:

1. When doing a standard drag and drop move of the file or folder, use the right-hand mouse button instead of the left one to drag and drop it on the desired destination.
2. Whenever you let go of the mouse button, the context menu will appear, then you select the option **Securely move to this location**.
3. Afterwards, you have to select a method of deletion and then confirm the activity.

SafeErase data from Solid State Drives (SSDs)

The frequent deletion and overwriting of files influences the life span of SSDs. It is not possible to run indefinite writing access on the memory cell of a SSD. O&O SafeErase offers you a gentle method, to permanently delete individual files, folders or partitions from the SSD. Files are deleted via a TRIM command. The data cannot be restored anymore.

O&O SafeErase recognizes SSDs automatically. The sequence and the control of the dialogs occurs analogously to the deletion of normal hard disks so that you need not apply more settings.

Important

O&O SafeErase also displays the selection of deletion methods when deleting data from an SSD. Yet, the deletion method will not be considered during deletion (trimming). If the data you selected is located on a hard disk and an SSD, the selected deletion method will only be applied to the data on the hard disk.

Note

If your SSD does not support the TRIM command, please consider the warning notices given by the program.

Technical limitations when SafeErasing Solid State Drives SSD technology limits the options for SafeErasing in a number of certain situations.

In the following cases, O&O SafeErase will permanently delete data using the "Overwrite with zeroes" method instead of TRIM commands:

- When deleting or moving very small files on NTFS drives. This generally affects MFT resident files.
- When deleting free space from ClusterTips, MFT, and FAT entries.

If partitions or entire disks are deleted from SSDs (using TRIM), the deletion will sometimes first become visible after the computer is restarted. This depends on the SSD involved.

Reports

A report is created for each completed task. In it you can read, which program function was run. For this, click on **Reports** in the left menu bar and select the report you want to see in the browser.

O&O SafeErase

Version: 11.0.57
 Computer name: USER-PC
 User: USER-PC\Screeentaker
 Method of deletion: Lowest security
 A quick process to SafeErase data. Data is overwritten with random data in only one run.

Start date: 01/11/2016 11:13:51
 End date: 01/11/2016 11:14:40
 Status: Successful

SafeErase files and folders

Name	Size	Point in time	Status
D:\My Documents\Marketing\Data sheet\datenblatt_de.pdf	604.03 KB	01/11/2016 11:13:54	SafeErased
D:\My Documents\Marketing\Data sheet\datasheet_en.pdf	692.03 KB	01/11/2016 11:13:54	SafeErased
D:\My Documents\Marketing\Desktop\obotwp_01_1280x1024.png	12 KB	01/11/2016 11:13:54	SafeErased
D:\My Documents\Marketing\Desktop\obotwp_04_1280x1024.png	204 KB	01/11/2016 11:13:54	SafeErased
D:\My Documents\Marketing\Desktop\obotwp_05_1280x1024.png	684 KB	01/11/2016 11:13:54	SafeErased
D:\My Documents\Marketing\Desktop\obotwp_06_1280x1024.png	392 KB	01/11/2016 11:13:54	SafeErased
D:\My Documents\Marketing\Desktop\obotwp_07_1280x1024.png	460 KB	01/11/2016 11:13:55	SafeErased
D:\My Documents\Marketing\Desktop\obotwp_08_1280x1024.png	484 KB	01/11/2016 11:13:55	SafeErased
D:\My Documents\Marketing\Desktop\obotwp_09_2560x1024.png	692 KB	01/11/2016 11:13:55	SafeErased

Find Print Save OK

Reports

SafeErase reports

- To SafeErase a report, you need to select it in the report overview and then click on **SafeErase report(s)**.

In addition, you also have the possibility to permanently delete all reports.

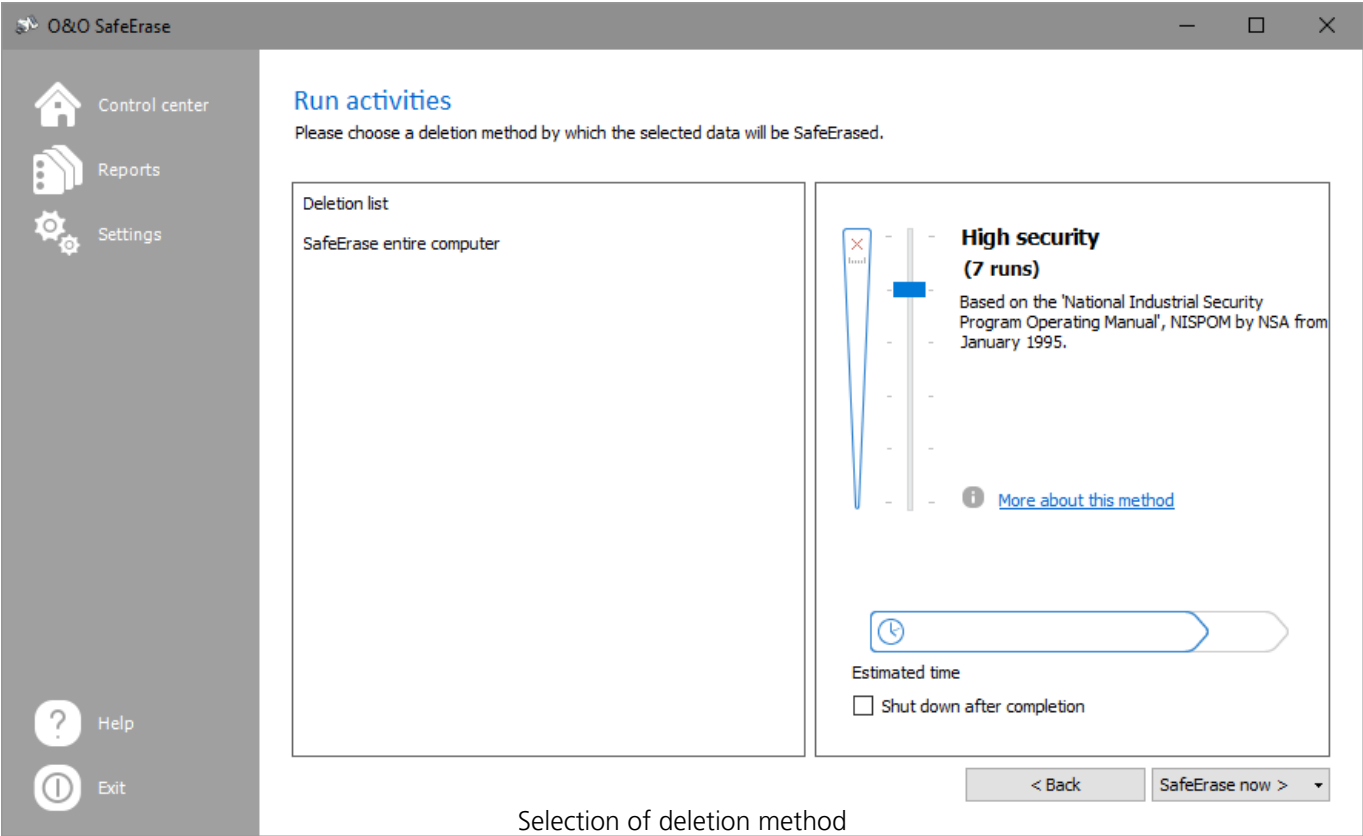
- For this select **SafeErase all reports** in the drop down menu from the interface **SafeErase reports**.

Method of deletion

There are six methods of deletion to SafeErase files. Each method offers another security level. The deletion varies in time due to the security level of the method used. The method "Lowest security" is preset.

Even data SafeErased with the lowest security level cannot be restored using commercial data rescue programs. These methods are useful if you want to delete private pictures or videos before selling your computer. Data SafeErased with medium or high security levels cannot be restored even by data rescue labs or from specialized offices. Use this method when deleting sensitive company or financial data for instance.

Please note that the higher levels require a longer amount of deletion time as the lower levels. The higher the level is, the higher number of deletion cycles have to be completed. You can now set the PC to run the deletion process and then shut down automatically.



Six methods of deletion

Highest Security (35 runs)

The method that offers the highest level of security is based on a process developed by Peter Gutmann and presented in his article "Secure Deletion of Data from Magnetic and Solid-State Memory". In this method, deleted data is overwritten by a series of 35 different deletion cycles that are executed in a random order.

High Security (7 runs)

The method for high security is based on the January 1995 'National Industrial Security Program Operating Manual' by the DoD. In this seven cycle variation (DoD 5220.22-M ECE), data is first overwritten three times with DoD 5220.22-M (E) Standards, then with a specific random value, and finally once again with DoD 5220.22-M (E).

Medium security (6 runs)

This method for medium security conforms to the standards of the German BSI as described in the "BSI IT Baseline Protection Manual". Data is overwritten with a random value and then with this values complement. This procedure is completed with new random values three times.

Low Security (3 Cycles)

The method is based on the "National Industrial Security Program Operating Manual", NISPOM (US DoD 5220.22-M) the DoD from January 1995. It proceeds with 3 runs (DoD 5220.22-M E): data is first overwritten with a fixed value, then with the complement of that value, and finally with a random value. The advantage lies in the speed with which this method proceeds to SafeErase data.

Lowest Security (1 run)

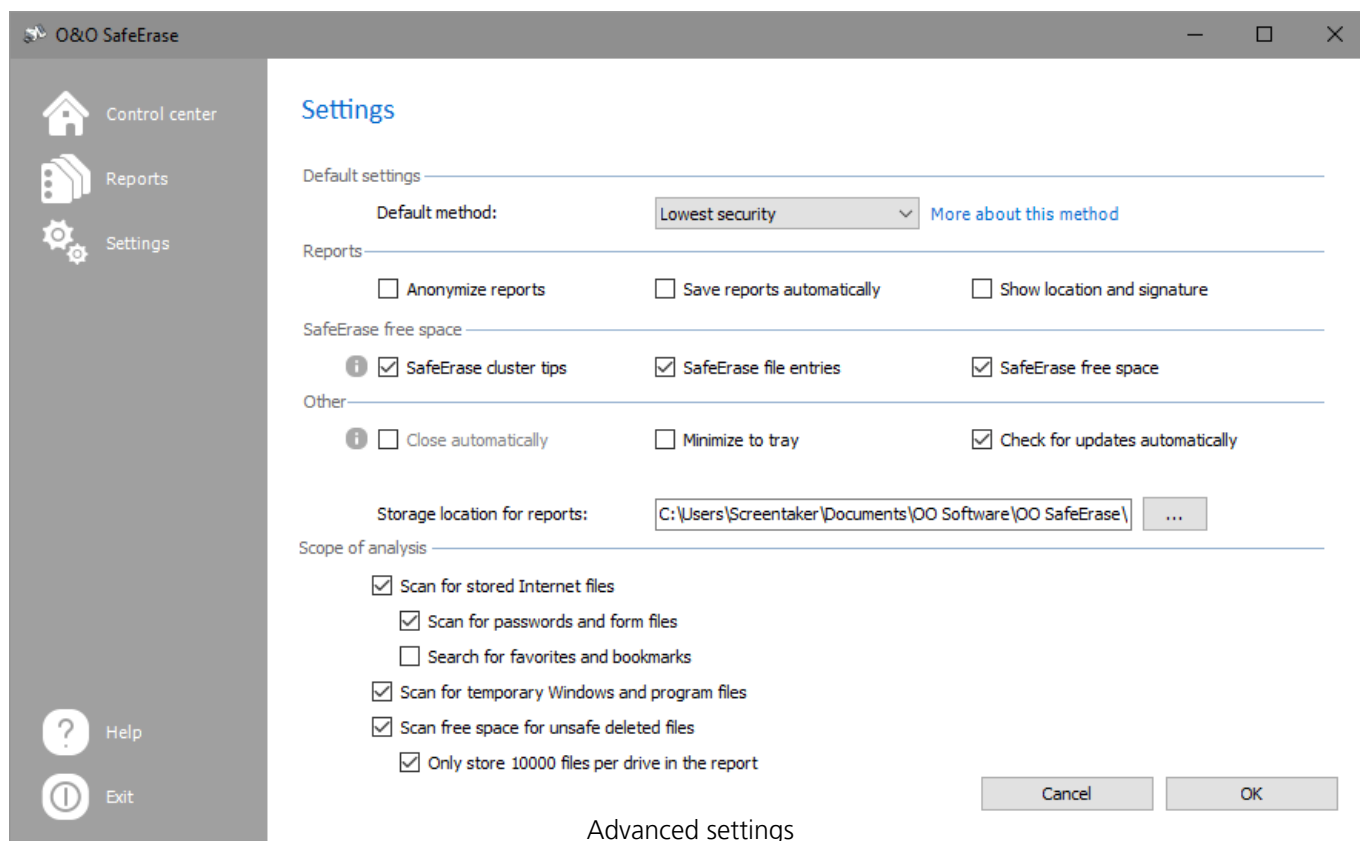
This method is quick, but offers very little security in the deletion of data. Using this method, data is overwritten with random values in one cycle.

Overwrite data with zeros

This method is the fastest, but offers very little security in the permanent deletion of data. The selected files will be overwritten with zeros.

Settings

If you want to change the default settings, click in the left menu row on **Settings**. In the settings dialogue you have the possibility to change the preset deletion method, automatically check for updates, reports settings, the deletion of free space as well as the behavior of O&O SafeErase.



Standardmethode festlegen

In the settings dialogue you can change the default preset for the Deletion method.

- Select a method from the drop-down menu, which should be used as default for deletions.

Note

To apply the settings, confirm the dialog with **OK**.

Change settings for reports

Click on **Settings/Reports** in the start page to find these options.

Save reports automatically

When enabling this option, reports will be stored automatically after program execution in and accessed in the report list.

Anonymize reports

If you select this option, all names of the deleted files will not be listed in the report.

Show location and signature

If this option is enabled, the signature and the location will be displayed at the end of a report. These fields may be used to certify the data destructing in written form.

Note

To apply the settings, confirm the dialog with **OK**.

Change settings to SafeErase free space

You have the possibility to set advanced settings for the deletion of the free space under **Settings/SafeErase free space**

SafeErase cluster tips

Clusters are the smallest hard disk units, where data can be saved. An entire unit will be occupied, even if the file is smaller than the smallest cluster. For example, if the smallest unit is 64 Kbytes in size and the file to save only 5 Kbytes small, the remainder of the hard disk unit will stay unused and there can be no access to it. Yet, file fragments of previously deleted files might still be located in this "free" area.

SafeErase MFT entries

For NTFS-file systems you can SafeErase the MFT entries (Master File Table). Every file is represented in the MFT by an entry. While using MFT entries, it is possible for data rescue programs to find and restore previously deleted data. To avoid this security loophole, O&O SafeErase offers the possibility to delete these entries. This way, unauthorized persons cannot reconstruct your data even with special software. In FAT file systems this setting deletes all FAT entries.

SafeErase free space

Deleted files are not really gone forever. When files are deleted, the area on the hard disk where the deleted data is recorded is simply marked by the operating system as free and open for the placement of other data. If this doesn't happen, data can be found and read. Therefore, it is important to SafeErase this free space.

Note

To apply the settings, confirm the dialog with **OK**.

Change other settings

Under **Other** in the settings dialog you can change the way SafeErase operates.

Close automatically

If you enable this function, then O&O SafeErase will be closed once it finished with the deletion, if activated by right-clicking). If on the other hand enabled via the user interface, O&O SafeErase will return to the start page after the deletion. Please bear in mind that you can only enable this function, if the function **Save reports automatically** is enabled in the settings dialog, since the reports will not be saved otherwise.

Minimize in tray

If this function is enabled, then O&O SafeErase will be displayed in the Tasktray when next minimized.

Storage location for reports

Here you can enter the target path, where the deletion reports for O&O SafeErase should be saved. If you want to delete the entire computer make sure that the storage location of the report is located on an external drive. Otherwise the report cannot be saved and will be deleted as well.

Note

To apply the settings, confirm the dialog with **OK**.

Settings for scope of analysis

You can select, which file type should be considered in the analysis.

- Check the box next to the file type you want to scan for. Files that have been stored on your PC by the internet browser will be searched for.

Scan for stored Internet files

Files are searched for, which have been stored by your Internet-Browser onto your computer. They might include Cookies, favorites, temporary files, passwords and form data.

Scan for Password and form files

The scan will filter for Internet files, form data and passwords, which have been stored via your Internet-Browser, e.g. the password for your Email account or access data to your online banking. This option is disabled as default.

Scan for temporary Windows and program files

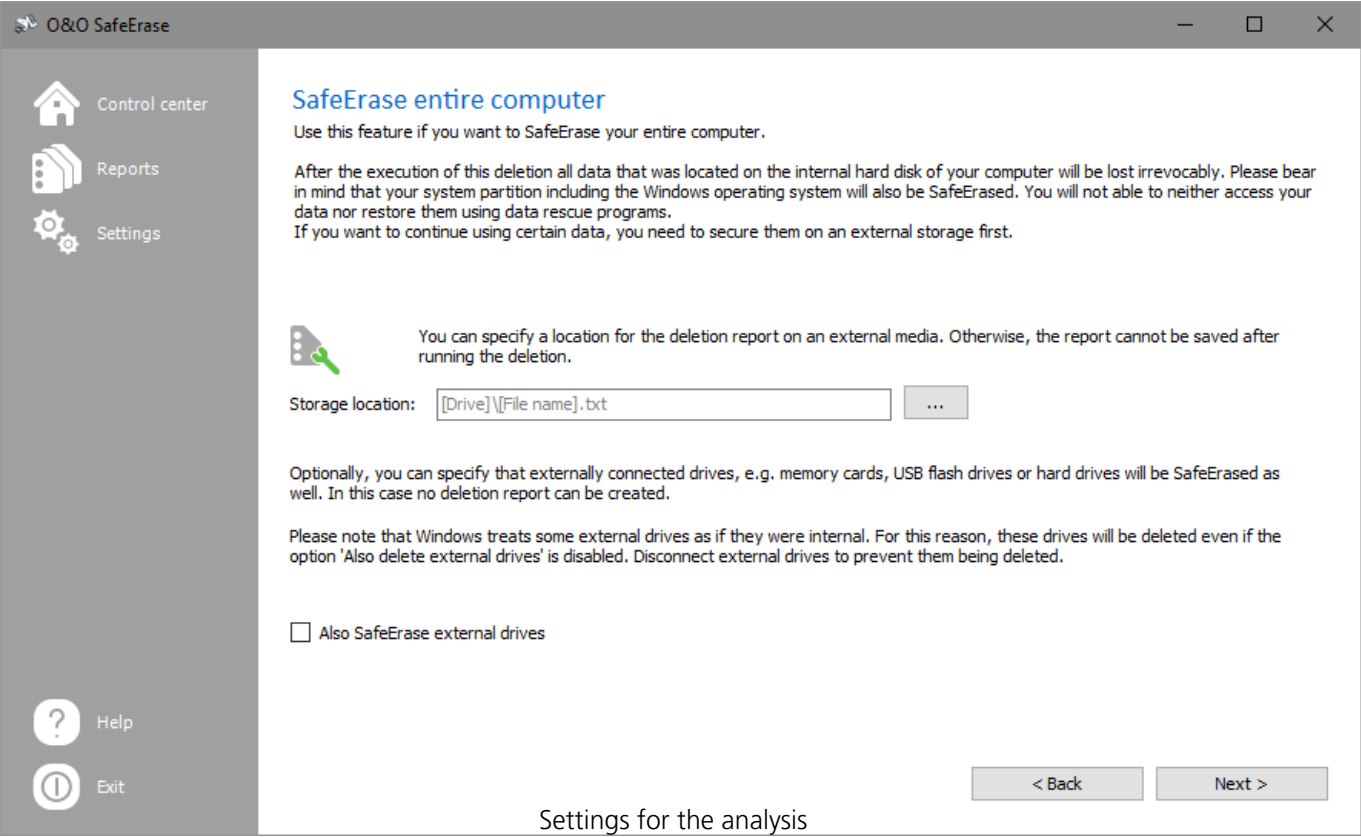
The analysis also includes temporary created files. These are created most often by Windows and other programs to relieve the memory, e.g. during an installation created in a folder.

Scan free space for unsafe deleted files

Free space is scanned for files, which have been already deleted "normally". These files are not visible under Windows anymore; yet, they it may be possible to restore them using data rescue programs.

Only store 10000 files per drive in the report

Only 10000 files will be stored in a report per drive.



SafeErasing the entire computer

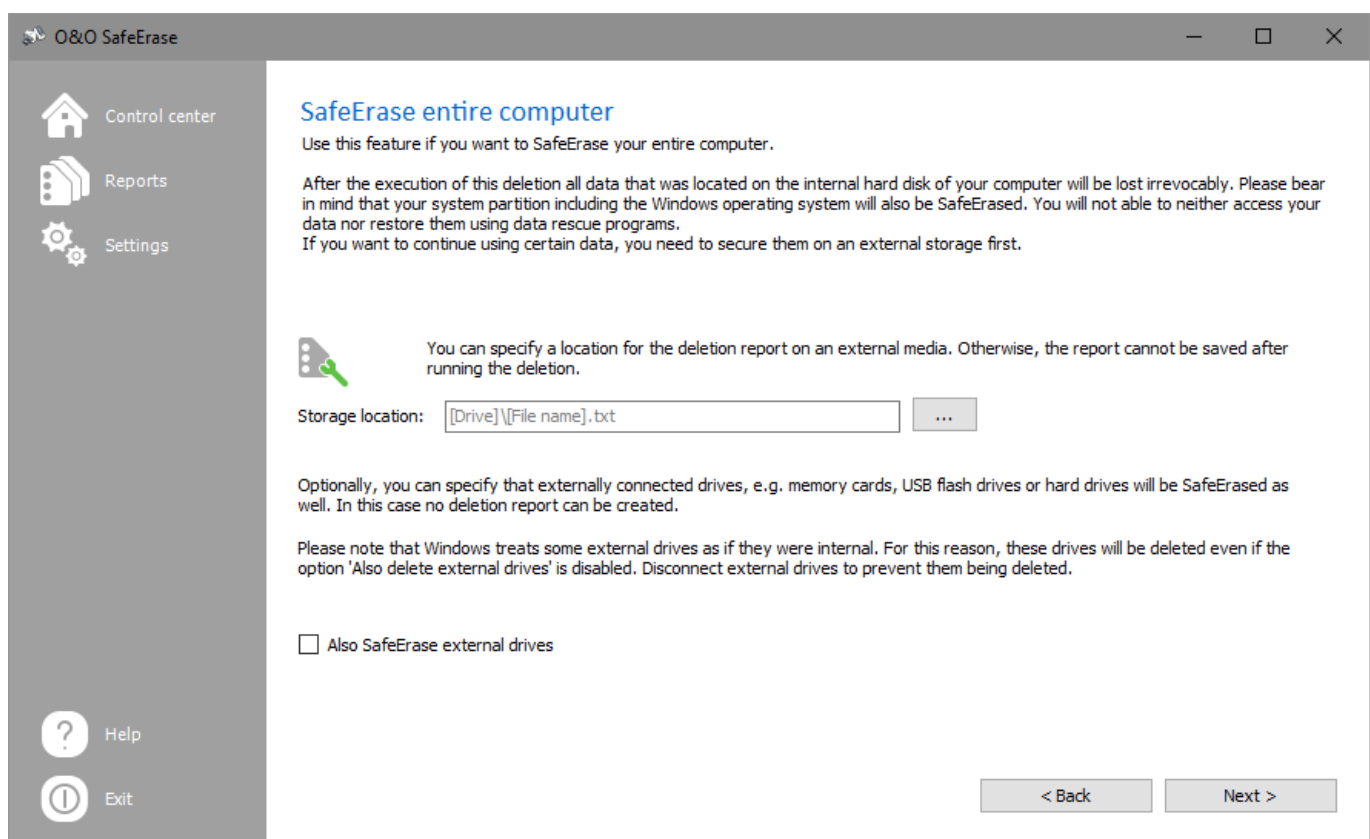
The function **SafeErase entire computer** enables you to permanently delete an entire computer without needing to create a boot CD first. All data, settings, programs, etc. will be gone forever - a restoration is impossible.

Permanently deleting your entire computer enables you to SafeErase your data when you sell, give away, or throw away your computer. You can rest assured that nobody will be able to restore and abuse your data.

After confirming the deletion, you will be asked to restart your computer. The actual deletion process will be executed during restart.

Important!

Please bear in mind that data deleted with O&O SafeErase cannot be restored, not even with the use of special software or hardware. Please bear this in mind to avoid accidental deletion of you data!



SafeErasing the entire computer

Start SafeErasing the entire computer

1. Select **SafeErase entire computer** in the start page.
2. Optionally, you can also specify to also include external drives while permanently deleting your entire computer.
3. By clicking on **Run** you will get to selection of the Deletion method.
4. After selecting the deletion method you can start the deletion with **SafeErase now**.
5. After confirming the first security checks, you will have to enter a six digit security code in the second security prompt.
6. If you confirm the dialogue, the deletion process will start and all data will be erased irrevocably from your computer.

Important!

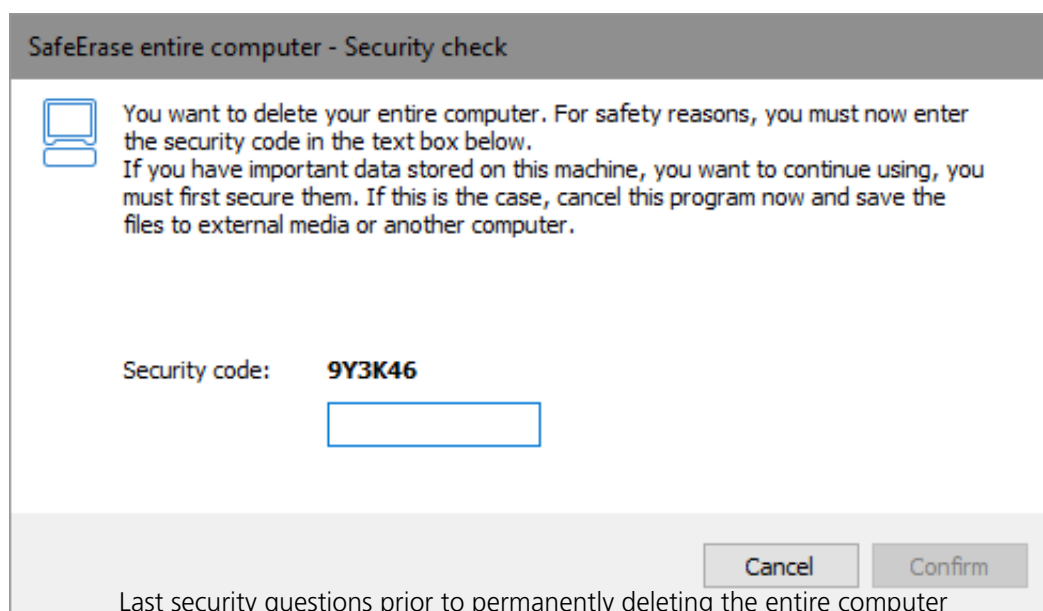
The function **SafeErase entire computer** erases all data from your computer without additional boot disk type media. Once you have confirmed the execution of this function, all data on your computer will be deleted, after which all data and settings will be lost.

Note

If you need a report after a deletion you need to save it on an external storage medium. For this, please enter a storage location. Please make sure that there is **no** check next to O&O SafeErase external drives.

Security check

Before SafeErasing your entire computer you will need to confirm various security prompts. Follow the instruction in the dialogs. You can cancel at anytime to avoid the unnecessary deletion of your computer.



Note

Please bear the Warnings in mind and confirm the security prompts if still sure. When the computer reboots all data will be SafeErased this can take up some time. Please do not turn off the computer during this process, otherwise the deletion process might not be completed correctly.

Completing the deletion process

After the security prompts, you will be asked to restart the computer. During the restart, all hard disk drives connected to the computer will be deleted permanently. The system partition is always left as last - in case you want to cancel the deletion you will still be able to restart the system and continue at a later time. Please bear in mind that a deletion process once started cannot be cancelled.

After completing the deletion, the computer will restart. On the screen you will see an error message informing you that no operating system could be found. You can now install a new operating system or sell it. All data is SafeErased.

Use O&O SafeErase via right-clicking

O&O SafeErase integrates itself into your Windows Explorer. You can access O&O SafeErase via right-clicking. Select one or more deletion objects and right-click them.

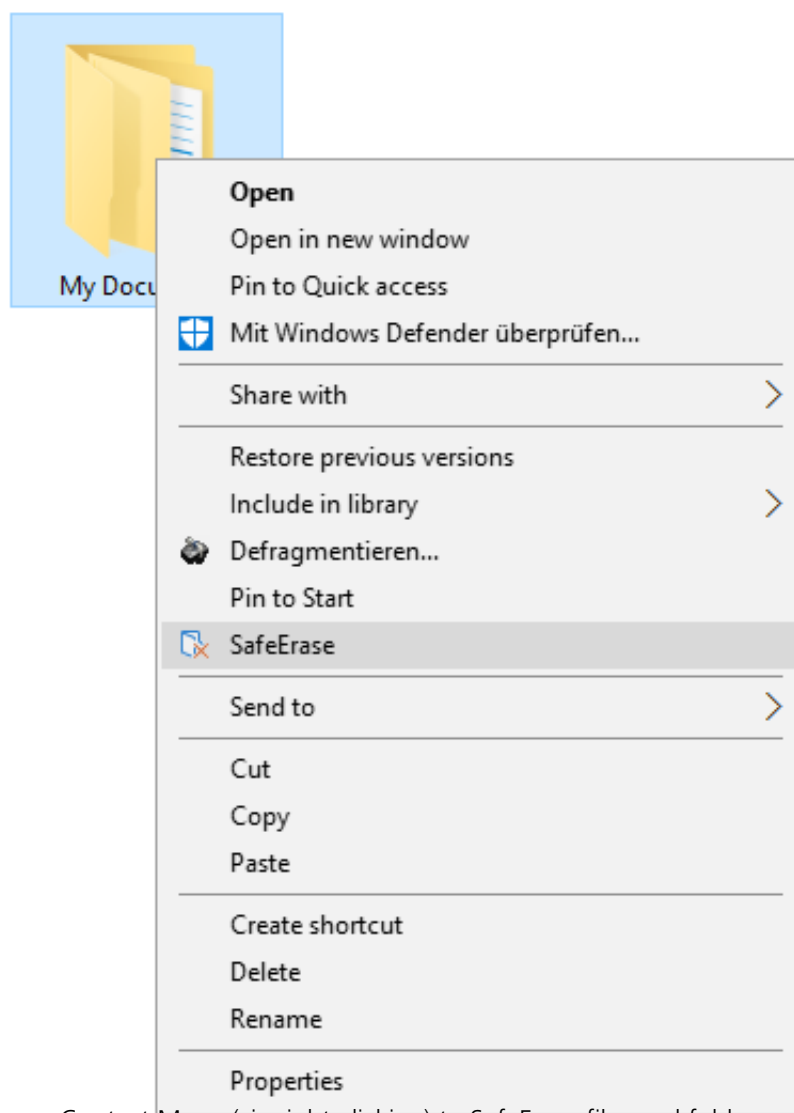
1. The entry **SafeErase** allows you to start O&O SafeErase.
2. After selecting the deletion method you can start the deletion with **SafeErase now**.

SafeErase files and folders via right-clicking

To delete files or folders, right-click on them and select **SafeErase** – exactly like the Windows entry "Delete".

1. O&O SafeErase will then ask you to proceed selecting the deletion method. More about this can be found in the chapter regarding Deletion methods.
2. **SafeErase now** starts the deletion process.

If you would like to delete more than one file, hold down the 'Ctrl' key and highlight the files with the left mouse button.



Context Menu (via right-clicking) to SafeErase files and folders

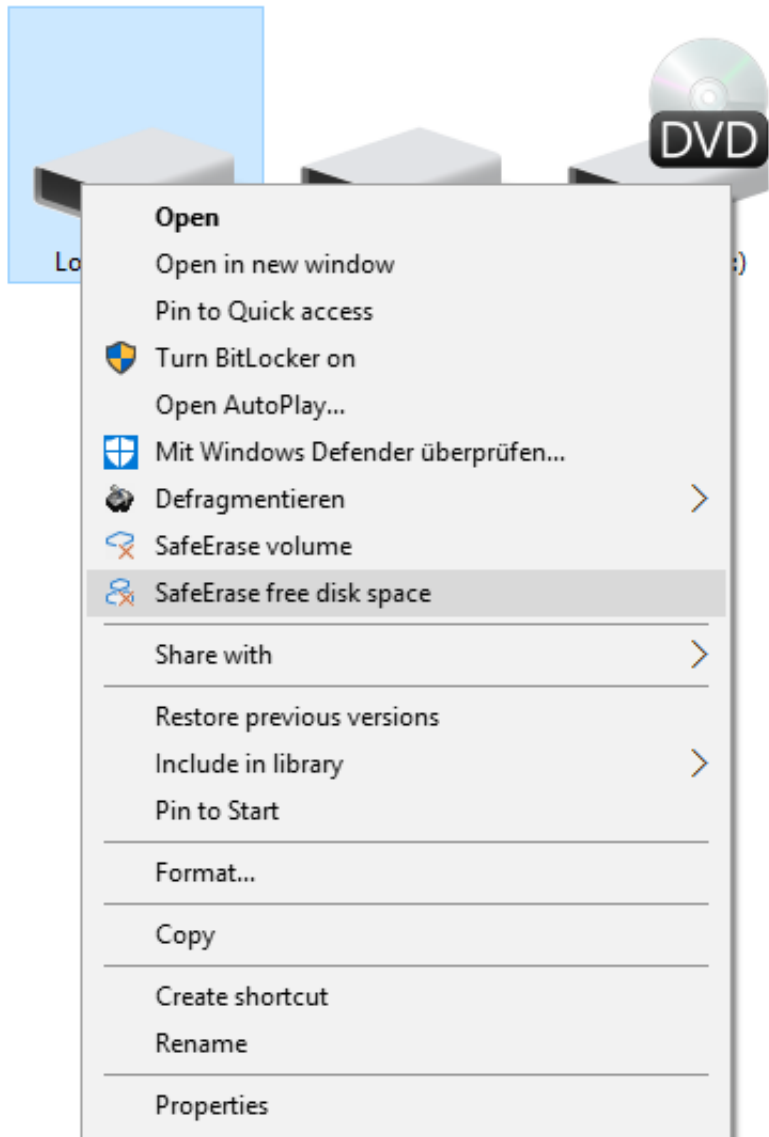
SafeErase a hard disks/partitions via right-clicking

Simply find the partition in Windows Explorer you would like to SafeErase and right click on it.

1. Select the menu entry **SafeErase volume**.
2. O&O SafeErase will then ask you to proceed selecting the deletion method. More about this can be found in the chapter regarding Deletion methods.
3. **SafeErase now** starts the deletion process.

Please bear in mind that this process might take up some time depending on the deletion method and the size of the partition.

After the partition has been permanently deleted it is necessary that you reformat the partition in order to use it again. More information about the formatting of a hard disk drive can be found in the Window's Help file.



SafeErase a hard disks/partitions via right-clicking

SafeErase data later by right-clicking

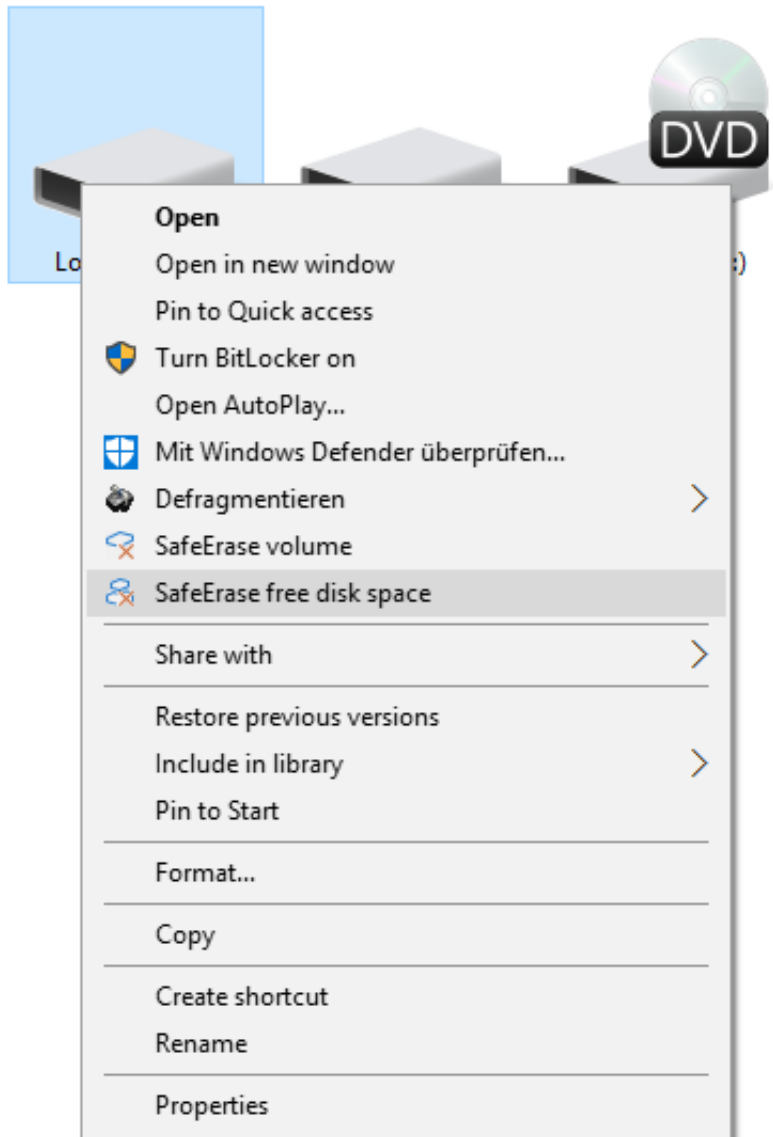
Data deleted with Windows does still exist on your computer. Windows makes these areas available to be rewritten as free space on the hard disks. To make sure that all old deleted data cannot be restored anymore, delete the free space with O&O SafeErase.

1. To do this, select the function **SafeErase free disk space** by right-clicking on the drive where you would like to wipe the free space.
2. O&O SafeErase will then ask you to proceed selecting the deletion method. More about this can be found in the chapter regarding Deletion methods.
3. **SafeErase now** starts the deletion process.

The higher the level of security and the more free space for deletion, the longer the deletion process will take.

Important

No existing files or data will be deleted, rather specific pieces of data that are marked free on the hard disk. After this process has been completed, you will not longer be able to restore this data ever again.

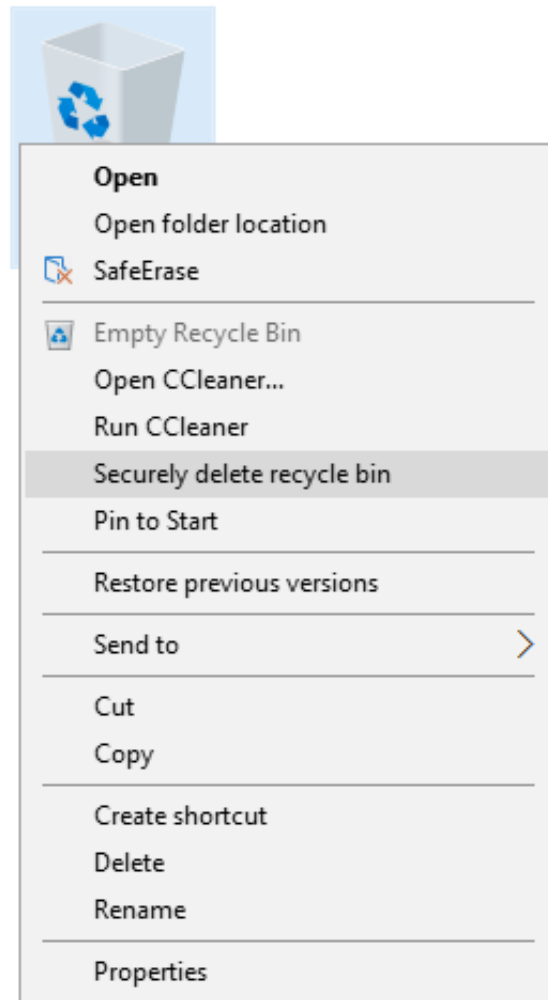


Context Menu (via right-clicking) to SafeErase free space

SafeErase data from the Windows Recycle Bin via right-clicking

Select the Recycle Bin and right-click on it to view the context menu. There you can click on **SafeErase (empty) Recycle Bin**.

1. O&O SafeErase will then ask you to proceed selecting the deletion method. More about this can be found in the chapter regarding Deletion methods.
2. **SafeErase now** starts the deletion process.



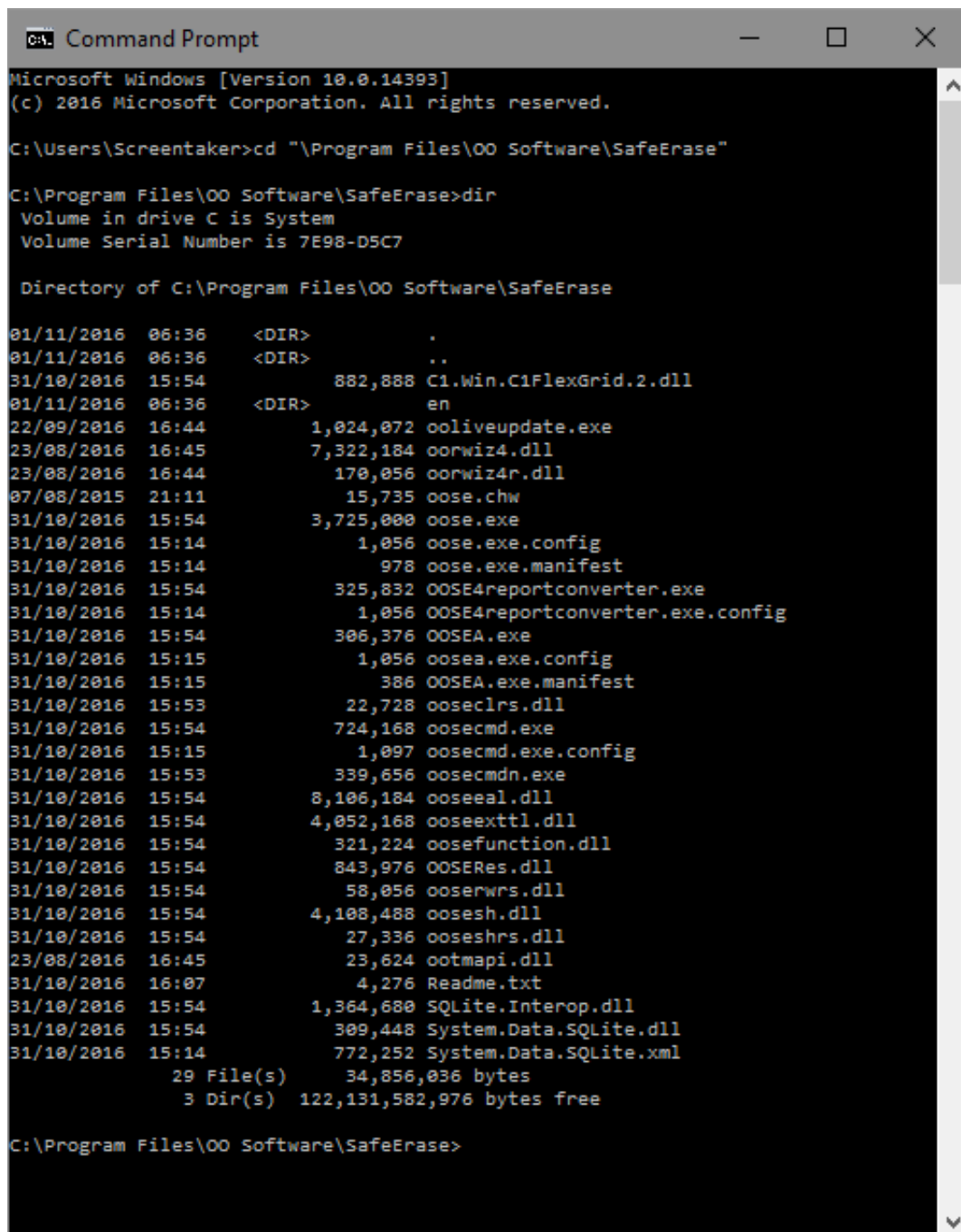
Via right-clicking for Recycling Bin with SafeErase Option

Important!

Windows diverts only a set amount of disk space to the Recycle Bin. When the total size of it files excess this set amount, the oldest data are deleted. This deletion method, however, is still the Windows' standard and therefore not secure. In case files were deleted from the Windows Recycle Bin, this function would be the only possibility to make sure they were securely overwritten.

Start from the command line

O&O SafeErase also has a command line version available. You can use it from the Windows command prompt (cmd). This development lends itself nicely to the integration into scripts that then can then be automatically executed on command.



```
C:\Program Files\OO Software\SafeErase>dir
Volume in drive C is System
Volume Serial Number is 7E98-D5C7

Directory of C:\Program Files\OO Software\SafeErase

01/11/2016  06:36    <DIR>          .
01/11/2016  06:36    <DIR>          ..
31/10/2016  15:54             882,888 C1.Win.C1FlexGrid.2.dll
01/11/2016  06:36    <DIR>          en
22/09/2016  16:44             1,024,072 ooliveupdate.exe
23/08/2016  16:45             7,322,184 oorwiz4.dll
23/08/2016  16:44             170,056 oorwiz4r.dll
07/08/2015  21:11             15,735 oose.chw
31/10/2016  15:54             3,725,000 oose.exe
31/10/2016  15:14              1,056 oose.exe.config
31/10/2016  15:14              978 oose.exe.manifest
31/10/2016  15:54             325,832 OOSE4reportconverter.exe
31/10/2016  15:14              1,056 OOSE4reportconverter.exe.config
31/10/2016  15:54             306,376 OOSEA.exe
31/10/2016  15:15              1,056 oosea.exe.config
31/10/2016  15:15              386 OOSEA.exe.manifest
31/10/2016  15:53             22,728 ooseclrs.dll
31/10/2016  15:54             724,168 oosecmd.exe
31/10/2016  15:15              1,097 oosecmd.exe.config
31/10/2016  15:53             339,656 oosecmdn.exe
31/10/2016  15:54             8,106,184 ooseeal.dll
31/10/2016  15:54             4,052,168 ooseexttl.dll
31/10/2016  15:54             321,224 oosefunction.dll
31/10/2016  15:54             843,976 OOSERes.dll
31/10/2016  15:54             58,056 ooserwrs.dll
31/10/2016  15:54             4,108,488 oosesh.dll
31/10/2016  15:54             27,336 ooseshrs.dll
23/08/2016  16:45             23,624 ootmapi.dll
31/10/2016  16:07              4,276 Readme.txt
31/10/2016  15:54             1,364,680 SQLite.Interop.dll
31/10/2016  15:54             309,448 System.Data.SQLite.dll
31/10/2016  15:14             772,252 System.Data.SQLite.xml
                29 File(s)          34,856,036 bytes
                3 Dir(s)      122,131,582,976 bytes free

C:\Program Files\OO Software\SafeErase>
```

Parameters

First, navigate in the command line (cmd) to the installation folder of O&O SafeErase. You will then be able to use the parameters listed in the chart.

The parameters in angle brackets </> are optional and do not have to be entered. A security prompt appears before deletion, which you can confirm automatically with the command /y .

Below you will find a description of the parameters for O&O SafeErase.

Parameters

[--showdisks]

[--deletedrive <disk number>]

[--deletevolume <drive letter>]

[--freespace <Drive letter>]

[--analyse <
internetfiles|windowsfiles|
deletedfiles| all>]

Explanation

Show disk drive information

Example:

```
ooscmd.exe --showdisks
```

SafeErase disk

The O&O SafeErase Server and Workstation Editions allow you to delete multiple disks using one command.

Example:

```
ooscmd.exe --deletedrive 1
```

Only in Workstation and Server Editions:

```
ooscmd.exe --deletedrive 1  
deletedrive 2
```

SafeErase drive The O&O SafeErase Server and Workstation Editions allow you to delete multiple drives using one command.

Example:

```
ooscmd.exe --deletevolume d:
```

Only in Workstation and Server

Editions: Ooscmd.exe --deletevolume d:
deletevolume e:

SafeErase free space of a drive. The O&O SafeErase Server and Workstation Editions allow you to delete free space on multiple drives using one command.

Example:

```
ooscmd.exe --freespace g:
```

Only in Workstation and Server

Editions: ooscmd.exe --freespace g:
freespace f:

Scan computer for potentially security relevant or unsafe deleted files. (Default: All file types are scanned and counted)

internetfiles: Only temporary Internet files are scanned and counted.

```
[--autoclean <internetfiles|
windowsfiles| deletedfiles| all>]
```

```
[--internetfiles <cookies|
favorites| temporary | history|
formdata| typedurls| all>]
```

```
[--tempfiles <recent | temporary |
thumbnails | recyclebin|
memorydumps | checkdisk | ftp |
all>]
```

windowsfiles: Only temporary Windows files are scanned and counted.

deletedfiles: Only unsafe deleted files will be scanned and counted.

all: All three file types are scanned and counted.

Example:

```
ooscmd.exe --analyze deletedfiles
```

SafeErase files found by analysis. (Default: All found file types will be permanently deleted)

Example:

```
ooscmd.exe --autoclean
windowsfiles
```

SafeErase temporary Internet files. (Default: All Internet files that are found will be deleted)

cookies: deletes only cookies.

favorites: deletes only set favorites.

temporary: Deletes only temporary Internet files.

history: Deletes only browsing history.

formdata: Deletes only form data saved in the browser such as username/password.

typedurls: Deletes only entered Internet addresses.

all: Deletes all Internet files that are found

Example:

```
ooscmd.exe --internetfiles
```

```
cookies --internetfiles history
```

Delete temporary Windows and program files (Default: All file types that are found will be SafeErased)

recent: Permanently deletes temporary files from programs.

temporary files: Deletes files in the Windows TEMP folder.

thumbnails: Permanently deletes the picture preview from the cache.

recyclebin: Deletes content from the Windows Recycle Bin.

memorydumps: Deletes DMP files.

checkdisk: Deletes files that were saved by CheckDisk (CHK).

ftp: Deletes saved login data from an FTP server.

all: Deletes all temporary file types that are

`[--totalerase <internal | all>]`

`[--security <highest | high |
medium | low | lowest | zero>]`

`[--register <user:user name
company:company Serial: Serial
number>]`

`[--report name <file name>]`

`[--createreport] or [-r]`

`[--match <files | folders | all>]`

`[-y] or [--yes]`

`[-s] or [--silent]`

found.

Example:

`oosecmd.exe --tempfiles recyclebin`
Deletes the entire computer. (Default: All internal drives will be deleted)

`internal`: Only internal drives will be deleted.

`all`: All connected drives, including external ones, will be deleted.

Example:

`oosecmd.exe --totalerase internal`

Optional: Set the used security level:

`highest`: Highest security level

`high`: High security level

`medium`: Medium security level

`low`: low security level

`lowest`: Lowest security level

`zero`: Overwrite with zeros

Example:

`oosecmd.exe --deletevolume d:`

`--security zero`

Register product

Example:

`oosecmd.exe --register „user:max
company:any company serial:xxx...”`

Important: Please use quotation marks with the registration data, otherwise the registration will fail!

Specify path and name of the report.

Example:

`oosecmd.exe --reportname`

`d:test.html`

A report is created for every activity performed by O&O SafeErase.

Example:

`oosecmd.exe --create report /`

`Oosecmd.exe -r --report name`

`d:test.html`

Delete files and folders that match the file filter

Example:

`oosecmd.exe -match files c:test*.*`

Deletes only files in folder `c:test`

Optional parameter: Answer all security prompts automatically with "Yes".

Example:

`oosecmd.exe --tempfiles all -y`

No display

<code>[-v] or [--version]</code>	Information on the program version Example: <code>oosecmd.exe --version</code>
<code>[-h]</code>	Shows all available commands and their explanation. Example: <code>oosecmd.exe -h</code>
<code><Files and/or folders></code>	List of files and folders to be permanently deleted. Example: <code>oosecmd.exe c:test*.*</code> <code>c:test2pic.jpg</code> <code>d:wordworddocument.doc</code>

Note

Please note that when entering the parameter in the command line, **no** manual line break may be included in the command sequence. Otherwise, the command will not be executed as intended. The line breaks in the examples are caused by the document's formatting.

Combining several parameter

You can also build a command sequence from the parameter. You will be able to combine an activity, such as delete free space with as many different options you like, for example:

Example

```
oosecmd.exe --freespace g:  
--security medium --createreport  
--reportname d:test.html
```

```
osecmd.exe --tempfiles all  
--security zero --createreport  
--reportname d:test_1.html
```

```
oosecmd.exe c:\Application\CV.doc  
d:\Pictures\Passport_picture.jpg
```

Explanation

The free space in drive G: will be SafeErased using the deletion method "medium security". Afterwards, a report on the deletion will be created and saved on Drive D: with the name "test.html".

All temporary Windows and program files will be overwritten with zeros. Afterwards, a report on the deletion will be created and saved on Drive D: with the name "test_1.html".

The file "CV.doc" in the folder "Application" on Drive C:, the file "Passport_picture.jpg" in the folder "Pictures" on Drive D: will be SafeErased using the preset default method.

Note

Please bear in mind that while entering the parameter in the command line **no** manual line break will be included into the command sequence. Otherwise, the command cannot be executed as it is supposed to. The line breaks in the examples exists because of the document format.

Frequently asked questions

In the following chapters you will find answers to some frequently asked questions. More information can also be found in the support section on our website ([FAQ](#)).

How you can check on the deletion process

As soon as data is erased, they cannot be displayed anymore. However, unless data is SafeErased, the data is still accessible.

If you run the analysis function after the deletion, you will see the remaining files.

The success of O&O SafeErase can also be measured with special data rescue programs. You can use O&O DiskRecovery for this purpose. These program will show you what data may be restored. You can download O&O DiskRecovery as trial versions for free from our Website.

More information about their use can be found in their respective user handbooks. If you have any questions. don't hesitate to contact us.

How you can SafeErase data, which already has been deleted

If you already have deleted data before installing O&O SafeErase, which you would like to SafeErase retroactively, you can delete the free space to do so. Through this process all free disk space is overwritten and already deleted files annihilated, making it possible to remove any trace of sensitive data you thought had already been erased. SafeErasing free space prevents the restoration of already deleted data by employing a special restoration product.

How to act when receiving error notices

O&O SafeErase can display error messages for various reasons during the deletion process.

These messages are also noted in the report. In most cases O&O SafeErase is not able to access the files intended for deletion. This is the case, whenever other programs are still using these files. They will not be deleted.

- If in doubt, restart your computer and run the deletion again.
- You will raise the chance for a successful deletion, if you keep other programs closed while the deletion is under way.

End user license agreement

O&O Software GmbH

End User License Agreement 5.0 (EULA)

GENERAL SECTION and SPECIALIZED SECTION

GENERAL SECTION

IMPORTANT - PLEASE READ CAREFULLY

This End User License Agreement (EULA) is organized into 2 sections: a general part, which is valid for all O&O products, and a specialized part, which includes the particular terms of each corresponding product. By accepting both parts of the license terms they automatically form part of your contract with O&O Software, Am Borsigturm 48, 13507 Berlin.

Once accepted, these license terms will become part of your contract with O&O Software, Am Borsigturm 48, 13507 Berlin.

If you have any questions regarding this contract and the license terms, our Service Team is available to help you under info@oo-software.com. The software product is protected by copyright laws and international copyright contracts as well as other laws and agreements concerning intellectual property.

1. Object and form of delivery

(1) You receive the software covered by the contract in executable for (Binary code) together with the relevant documentation released by O&O according to Section (6).

(2) The software provides the range of functions described in the given documentation. The documentation regarding functionality may be consulted prior to concluding the contract in the internet presentation on the following site www.oo-software.com.

(3) Delivery will be made according to the way in which you have purchased the software, either by having a disk directly handed over, or sent by mail to an address you have supplied, or through the forwarding of a license as well as any required download information to a given E-mail address.

(4) If you are currently receiving updates as part of a maintenance agreement, these will be made available electronically to you for downloading.

(5) Changes to the delivery or E-mail address can only be considered, if they are supplied in writing or by E-mail to the address or E-mail address indicated on www.oo-software.com at least two weeks before delivery of the update.

(6) A printed copy of the documentation will not be included in the delivery. The documentation

consists primarily of electronic aids.

2. Requirements for application (system requirements)

(1) Installation of the software is not part of the agreement.

(2) Depending on the software, there are certain system requirements that must be met in order to use it according to the terms of this contract. These will be defined according to each product in the specialized section of this contract.

3. Rights of use, including test versions, unauthorized transfer, and application

(1) O&O grants you, upon payment of the agreed one-time fee, a permanent, spatially unlimited and non-exclusive right to use the software.

(2) Test versions - if you have installed a test version of one of our products taken from the O&O Website www.oo-software.com, the right of use will be, according to the program, for a limited time only and/or technically restricted.

(3) One copy of the software is entitled to be used on a maximum of one (1) output device /workstation simultaneously.

(4) If you want to use the software on more than one output device/workstation, the rights of use must be extended accordingly. To find out which O&O products are also available as volume licenses, please consult www.oo-software.com. The separate price list concerning O&O Volume Licenses will apply to extending the rights of use without redelivery. A subsequent extension of the rights of use without redelivery does not result in further warranty.

(5) Any use beyond that agreed upon in the contract is one in violation of the contract. In such a case, you are required to report this use that exceeds the rights of use to the supplier without any delay. The parties will then try to bring about an agreement for extending the rights of use. For the duration of the excessive usage, i.e., until the conclusion of such an agreement or the cessation of the excessive usage, you are required to pay compensation for this excessive usage according to the amount indicated in our price lists. The amount of compensation will be calculated on the basis of a four year, straight-line depreciation. If we are not informed of the excessive usage, a contract penalty in the amount three times the price of the usage indicated in the price list will be due to O&O.

(6) You are entitled to create a backup copy of the software and to conduct ordinary data backups. The creation of more copies than the amount needed for the backing up of any future usage (including the backup copies and data backups) is not allowed.

(7) Copyrights and other trademarks within the software may not be altered or removed. They must be transferred onto every copy of the software.

(8) Unauthorized transfer - only when you have purchased the software with an accompanying disk are you permitted to transfer it and then, only under the following conditions: a resale of the software is only permitted when it involves an entire software copy, i.e., by surrendering your own

usage of the purchased copy, you are entitled to transfer these rights of use of the disk onto a third party according to the terms of the agreement existing between you and O&O. When making such a transfer, you are required to hand over to the third party all materials related to the software that are covered in the contract and to delete the software from any storage volumes (e.g., hard disks) remaining in your possession.

(9) Unauthorized rental and service - The purchase of this contract does not entitle you to any public transfer or rental of the software. You are also not entitled to include the software as part of your providing services for and in the presence of any third parties. You may purchase an appropriate license from O&O for doing this.

(10) Prohibition on Reverse Engineering, Decompilation, and Disassembly. You may not reverse engineer, decompile, or disassemble this software except and only to the extent that such activity is expressly permitted by applicable law notwithstanding this limitation.

(11) Compliance with Applicable Laws. You must comply with all applicable laws regarding use of software.

4. Payment

(1) The prices are given with the corresponding sales taxes included, unless otherwise indicated.

(2) Test versions - Downloads of test versions offered by O&O are provided free of charge, unless otherwise indicated.

(3) If you receive updates of your programs as part of a Maintenance Agreement, the terms of payment in these contracts will apply to these Maintenance Agreements.

(4) O&O is entitled to forward any data it has received onto third parties requiring it for purposes of collection.

(5) Until payment is made in full, O&O retains possession of all rights, particularly those concerning copyrighted rights of use, on the materials included in this contract. O&O is specifically entitled to cancel a contract, for example, when your payment is delayed, it prohibits the further using of the software and demands the surrendering of all copies or this being impossible, to demand their deletion. Should a third party have access to the object of purchase before payment is completed for the contractual software, you are required to inform this third party about the object being the property of O&O and to inform O&O, in writing, about the third party's access.

5. Material defect and defect of title

(1) The software package or download you receive is free of any material defect or defect of title.

(2) A material defect exists when the software is unable to be used as described in the documentation appearing on the website www.oo-software.com and included in delivery or available for downloading. O&O is constantly checking to make sure that other sources are not misrepresenting the functions and properties of the software as described in the documentation. You can therefore assume that any descriptions beyond those found in the software

documentation have not originated with O&O and are also unknown to it. Please inform O&O if you learn of any software descriptions that include functions and properties not mentioned in the documentation.

(3) A defect of title exists when, after delivery of the software, the rights needed for using it as stipulated in the contract have not been effectively granted.

(4) Any claims concerning defects of material and/or title related to the software have a limitation period of two years subsequent to delivery of the program or transmission of the serial number needed for downloading. If you are not a private individual, the warranty period is shortened to one year. If O&O has fraudulently concealed a material defect, a three year limitation period will cover claims related to this defect. Payment for compensation that you might have been entitled to as a result of cancellation or an abatement can be refused upon expiration of the limitation period.

(5) You are required to inform O&O, in writing if possible, of any defects that arise immediately upon their discovery. While doing so you should also describe, as well as possible, how the defect is communicated, the effect it has on the program, and under which circumstances it occurs.

(6) Should defects be reported to O&O within the limitation period, it will undertake a cure free of charge.

(7) As part of the cure, the corrected software will be redelivered as agreed. An on-site analysis and correction of the error on your system will not take place. O&O assumes the ensuing expenses for the cure, in particular the costs for transport, labor, and material. You are personally responsible for installation. O&O specifically does not assume on-site installation as part of its obligation with regard to defects of material or title. Should a change of the program be required as part of the cure, O&O will make the necessary changes in the documentation without any charges.

(8) After the unsuccessful expiration of a deadline you set for cure, you can cancel the contract or reduce the purchase price and demand compensation instead of service or the replacement of any futile expenditures.

(9) A deadline is not required when a) O&O refuses both kinds of cure, even if it is entitled to do so as a result of the arising expenses, or b) the cure is impossible, or c) the cure is unacceptable to you, or d) the cure is unsuccessful.

A subsequent improvement is considered a failure after the second unsuccessful attempt, unless there is something particular about the type of software or the defect itself or the surrounding circumstances that would indicate otherwise.

(10) You are not entitled to cancel the contract if the defect is negligible, nor may you, in this event, demand compensation instead of full service.

(11) In the event of cancellation, compensation is due for any uses made. The compensation for use will be based on a four year, straight-line depreciation of the purchase price.

(12) As a result of the abatement, the purchase price will be reduced by the amount which is calculated for deducting the defect from the value of the software. The standard used will be its value at the time the contract was concluded. The amount, when necessary, is to be calculated by estimation. As a result of this reduction, any amount larger than that paid for the reduced purchase price will be refunded.

(13) If it turns out that a reported problem did not arise as a result of a defect in the software, O&O is entitled to invoice you, according to the amount charged in its price lists for such services, the expenses for analysis and correction of the problem if you can be accused of malice or gross negligence.

(14) The seller's warranty is canceled, when changes are made on the software without expressed written consent or when the software is not used as intended or used in an improper software environment, unless you can prove that these facts had nothing to do with the problems that occurred.

6. Limitation of compensation

(1) O&O is liable for compensation for every legal ground to the extent described in the following provisions.

(2) The extent of liability of O&O for damages caused by malice or gross negligence arising from O&O itself or one of its vicarious or legal agents is unlimited.

(3) There is no limit to the extent of liability of O&O or any of its legal or vicarious agents for damages involving injury to life, physical well-being or health, or for simple breach of duty.

(4) There is unlimited liability for damages caused by serious organizational fault on the part of O&O as well as for damages arising from a missing guaranteed characteristic.

(5) For the breach of an essential contractual duty, O&O is liable for damages normally foreseen in a contract when none of the instances in provisions (2) - (4) applies.

(6) Any further liability for compensation is excluded, specifically excluded is liability without fault.

(7) Liability as defined by the product liability law remains untouched.

(8) If damage can be traced to have arisen through a fault on the part of O&O as well as on the part of yourself, you must have your share of the fault evaluated.

You are responsible for making a standard backup of your data at least once a day. For data loss caused by O&O, O&O is only liable for the expense of duplicating the data on your backup copies that need to be created and for the restoration of data, which would have also been lost during a standard backup procedure.

7. Final provisions

(1) You may only balance claims from O&O with indisputable or legally valid claims.

(2) Changes and amendments to this contract must be made in writing. This also applies to changes to this provision.

(3) The contract is subject to German law. The uniform UN purchasing law (CISG) as well as the UNIDROIT Factoring Agreement of Ottawa do not apply.

(4) Any general terms and conditions on your part will not be applied.

(5) This license agreement is subject to the laws of the Federal Republic of Germany. In the event you are not a private individual or a resident of the Federal Republic of Germany, we agree that the district court in Berlin will be the competent court for litigation arising from this contract.

8. Contact

If you have any questions concerning the O&O Software License Agreement or wish to speak with O&O, please get in touch with us.

O&O Software, Am Borsigturm 48, 13507 Berlin, Germany

Tel. +49 (0)30 991 91 62-00, Fax +49 (0)30 991 91 62-99

E-Mail: info@oo-software.com / sales@oo-software.com, Web: www.oo-software.com

SPECIALIZED SECTION

O&O BlueCon

Amendment to: 2. Requirements for application (system requirements)

The software requires Windows Windows Server 2008 (all Editions), Windows 7 (all Editions), Windows Server 2008 R2 (all Editions), Windows 8 (all Editions), Windows Server 2012 (all Editions), Windows Server 2012 R2 (all Editions) or Windows 10 (all Editions) operating systems. Application within the terms of this contract is not achieved without the use of one of these operating systems.

The product at hand can only be employed according to the acquired license. The following license types exist for O&O BlueCon:

O&O BlueCon Admin Edition

You are authorized to use the software product on all computers a) in the possession of the company (legal person or natural person(s) in the case of corporations) owning the license and b) all located at a single site. This software product may be used only via the corresponding bootable medium that was either purchased or that you created. Separate installation of the software product itself or any of its components on individual computers is not part of this licensing agreement. This license is bound to a single natural person and is non-transferable.

O&O BlueCon Tech Edition

You are authorized to use the software product on all computers. This includes computers not owned by the company of the licensee (also known as Service Technician's License). This software product may be used only via the corresponding bootable medium that was either purchased or

that you created. Separate installation of the software product itself or any of its components on individual computers is not part of this licensing agreement. This license is bound to a single natural person and is non-transferable.

O&O BuildPE

Important note for working with O&O BuildPE

The program overwrites the target storage volume (these volumes include re-writable CDs or USB Sticks, amongst others). Please therefore make absolutely sure that the target volume does not contain any data that you may still require, as the overwriting of this data cannot be reversed!

O&O formally declares that it is not responsible for damages arising from the improper use of O&O BuildPE.

Amendment to: 2. Requirements for application (system requirements)

The software requires Windows Windows Server 2008 (all Editions), Windows 7 (all Editions), Windows Server 2008 R2 (all Editions), Windows 8 (all Editions), Windows Server 2012 (all Editions), Windows Server 2012 R2 (all Editions) or Windows 10 (all Editions) operating systems. Application within the terms of this contract is not achieved without the use of one of these operating systems.

O&O CleverCache

Amendment to: 2. Requirements for application (system requirements)

O&O CleverCache Professional Edition

The software requires Windows 7 (all Editions) operating systems. Application within the terms of this contract is not achieved without the use of one of these operating systems.

O&O CleverCache Server Edition

The software requires Windows Server 2008 (all Editions), Windows 7 (all Editions) or Windows Server 2008 R2 (all Editions) operating systems. Application within the terms of this contract is not achieved without the use of one of these operating systems.

O&O Defrag

Amendment to: 2. Requirements for application (system requirements)

O&O Defrag Professional Edition

The software requires Windows 7 (all Editions), Windows 8 (all Editions) or Windows 10 (all Editions) operating systems. Application within the terms of this contract is not achieved without the use of one of these operating systems. Control of the program through a network management is not possible.

O&O Defrag Workstation Edition

The software requires Windows 7 (all Editions), Windows 8 (all Editions) or Windows 10 (all

Editions) operating systems. Application within the terms of this contract is not achieved without the use of one of these operating systems. The O&O Defrag Workstation Edition may be used on computers with or without the user interface. You are entitled to control this program over the separately obtainable network manager.

O&O Defrag Server Edition

The software requires Windows Server 2008 (all Editions), Windows 7 (all Editions), Windows Server 2008 R2 (all Editions), Windows 8 (all Editions), Windows Server 2012 (all Editions), Windows Server 2012 R2 (all Editions), Windows 10 (all Editions) or Windows Server 2016 (all Editions) operating systems. Application within the terms of this contract is not achieved without the use of one of these operating systems. The O&O Defrag Server Edition may be used on computers with or without the user interface. You are entitled to control this program over the separately obtainable network manager.

O&O Defrag Virtual Machine Edition

The software may only be used on the appropriate operating system in accordance with the previously mentioned conditions for the Workstation and Server Editions. You must own a minimum of one Server Edition to use a Virtual Machine Edition.

O&O DiskImage

Amendment to: 2. Requirements for application (system requirements)

O&O DiskImage Express Edition

The software requires Windows 7 (all Editions), Windows 8 (all Editions) or Windows 10 (all Editions) operating systems. Application within the terms of this contract is not achieved without the use of one of these operating systems. Control of the program through a network management is not possible.

O&O DiskImage Professional and Special Edition

The software requires Windows 7 (all Editions), Windows 8 (all Editions) or Windows 10 (all Editions) operating systems. Application within the terms of this contract is not achieved without the use of one of these operating systems. Control of the program through a network management is not possible.

O&O DiskImage Workstation Edition

The software requires Windows 7 (all Editions), Windows 8 (all Editions) or Windows 10 (all Editions) operating systems. Application within the terms of this contract is not achieved without the use of one of these operating systems. The O&O DiskImage Workstation Edition may be used on computers with or without the user interface. You are entitled to control this program over the separately obtainable network manager.

O&O DiskImage Server Edition

The software requires Windows Server 2008 (all Editions), Windows 7 (all Editions), Windows Server 2008 R2 (all Editions), Windows 8 (all Editions), Windows Server 2012 (all Editions), Windows Server 2012 R2 (all Editions), Windows 10 (all Editions) or Windows Server 2016 (all Editions)

operating systems. Application within the terms of this contract is not achieved without the use of one of these operating systems. The O&O DiskImage Server Edition may be used on computers with or without the user interface. You are entitled to control this program over the separately obtainable network manager.

O&O DiskImage Virtual Machine Edition

The software may only be used on the appropriate operating system in accordance with the previously mentioned conditions for the Workstation and Server Editions. You must own a minimum of one Server Edition to use a Virtual Machine Edition.

Amendment to: 3. Rights of use, including test versions, unauthorized transfer, and application

Creation and restoration of images

The source computer and each target computer are required to hold licenses, to create and restore images using O&O DiskImage. One license is sufficient under the previously mentioned terms, if the source and the target computer is one non-virtual workstation. Each virtual machine is seen as an independent computer; in other words, each virtual machine needs its own license.

O&O DiskRecovery

Amendment to: 2. Requirements for application (system requirements)

The software requires Windows Server 2008 (all Editions), Windows 7 (all Editions), Windows Server 2008 R2 (all Editions), Windows 8 (all Editions), Windows Server 2012 (all Editions), Windows Server 2012 R2 (all Editions), Windows 10 (all Editions) or Windows Server 2016 (all Editions) operating systems. Application within the terms of this contract is not achieved without the use of one of these operating systems.

The product at hand can only be used according to its acquired license. The following license types exist for O&O DiskRecovery:

O&O DiskRecovery Professional Edition

You are authorized to install and use the software product on only one computer. This should be used wholly in conjunction with all hardware in your possession, i.e. this license may not be used to provide a service to a third party. Other limitations may apply in the software itself. Please consult the software documentation for more information on these limitations.

O&O DiskRecovery Admin Edition

You are authorized to install and use the software product on all computers a) in the possession of the company (legal person or natural person(s) in the case of corporations) owning the license and b) all located at a single site. This should be used wholly in conjunction with all hardware in your possession, i.e. this license may not be used to provide a service to a third party. This license is bound to a single natural person and is non-transferable.

O&O DiskRecovery Tech Edition

You are authorized to install and use the software product on all computers. This includes computers that do not belong to the company owning the license (also known as Service

Technician's License). This license is bound to a single natural person and is non-transferable.

O&O DiskStat

Amendment to: 2. Requirements for application (system requirements)

O&O DiskStat Professional Edition

The software requires Windows 7 (all Editions) operating systems. Application within the terms of this contract is not achieved without the use of one of these operating systems.

O&O DiskStat Workstation Edition

The software requires Windows 7 (all Editions) operating systems. Application within the terms of this contract is not achieved without the use of one of these operating systems. The O&O DiskStat Workstation Edition may be used on computers with or without the user interface. You are entitled to control this program over the separately obtainable network manager.

O&O DiskStat Server Edition

The software requires Windows Server 2008 (all Editions), Windows 7 (all Editions) or Windows Server 2008 R2 (all Editions), operating systems. Application within the terms of this contract is not achieved without the use of one of these operating systems.

O&O DiskStat Virtual Machine Edition

The software may only be used on the appropriate operating system in accordance with the previously mentioned conditions for the Workstation and Server Editions. You must own a minimum of one Server Edition to use a Virtual Machine Edition.

O&O DriveLED

Amendment to: 2. Requirements for application (system requirements)

O&O DriveLED Professional Edition

The software requires Windows 7 (all Editions) operating systems. Application within the terms of this contract is not achieved without the use of one of these operating systems. Control of the program through a network management is not possible.

O&O DriveLED Workstation Edition

The software requires Windows 7 (all Editions) operating systems. Application within the terms of this contract is not achieved without the use of one of these operating systems. The O&O DriveLED Workstation Edition may be used on computers with or without the user interface. You are entitled to control this program over the separately obtainable network manager.

O&O DriveLED Server Edition

The software requires Windows Server 2008 (all Editions), Windows 7 (all Editions) or Windows Server 2008 R2 (all Editions), operating systems. Application within the terms of this contract is not achieved without the use of one of these operating systems. The O&O DriveLED Server Edition may be used on computers with or without the user interface. You are entitled to control this program

over the separately obtainable network manager.

O&O DriveLED Virtual Machine Edition

The software may only be used on the appropriate operating system in accordance with the previously mentioned conditions for the Workstation and Server Editions. You must own a minimum of one Server Edition to use a Virtual Machine Edition.

O&O Enterprise Management Console

Important note on the Microsoft SQL Server

This product uses the Microsoft SQL Server or Microsoft SQL Server Express Edition. To the extent that these programs are part of the installation of this product, the terms of their licensing related to the use of this software will also apply to the terms of this agreement.

The use of Microsoft SQL Server Express Edition is free of charge in conjunction with this product. The purchase of licenses for O&O Enterprise Management Console and related products is separate from any possible purchase of SQL Server products.

Amendment to: 2. Requirements for application (system requirements)

The software requires Windows 7 (all Editions), Windows Server 2008 R2 (all Editions), Windows 8 (all Editions), Windows Server 2012 (all Editions), Windows Server 2012 R2 (all Editions) or Windows 10 (all Editions) operating systems. Application within the terms of this contract is not achieved without the use of one of these operating systems.

O&O EventViewer

Amendment to: 2. Requirements for application (system requirements)

O&O EventViewer Workstation Edition

The software requires Windows 7 (all Editions) or Windows 8 (all Editions) operating systems. Application within the terms of this contract is not achieved without the use of one of these operating systems. The O&O EventViewer Workstation Edition may be used on computers with or without the user interface. You are entitled to control this program over the separately obtainable network manager.

O&O EventViewer Server Edition

The software requires Windows Server 2008 (all Editions), Windows 7 (all Editions), Windows Server 2008 R2 (all Editions), Windows 8 (all Editions) or Windows Server 2012 operating systems. Application within the terms of this contract is not achieved without the use of one of these operating systems.

O&O EventViewer Virtual Machine Edition

The software may only be used on the appropriate operating system in accordance with the previously mentioned conditions for the Workstation and Server Editions. You must own a minimum of one Server Edition to use a Virtual Machine Edition.

O&O FileDirect

Amendment to: 2. Requirements for application (system requirements)

The software requires Windows 10 (all Editions) operating systems. Application within the terms of this contract is not achieved without the use of one of these operating systems.

Amendment to: 3. Rights of use, including test versions, unauthorized transfer, and application Distribution. You may make exact, unmodified copies of this Software Product and distribute such copies solely by electronic means for example, posting on Internet sites for others to download), subject to the following (a) that the software is distributed unmodified (wrapping or packaging the software with a so-called "Installer", "Wrapper" or similar constitutes a forbidden modification for the purposes of this contract) and in its entirety with its complete user documentation, readme files, copyright, trademark, and other indications protecting intellectual property including this license agreement, and all of its other components), and (b) that such transfer may occur anywhere in the world, except when prohibited by laws of the Federal Republic of Germany (directly or indirectly.)

Amendment to: 4. Payment

O&O demands no fee for the use of O&O FileDirect. In addition, a fee for this license and this program may not be demanded by any Third Parties, unless this is done with the expressed approval of O&O. When in doubt, please get in touch with us. You can find our contact data at the end of this license agreement.

O&O MediaRecovery

Amendment to: 2. Requirements for application (system requirements)

The software requires Windows 7 (all Editions), Windows 8 (all Editions) or Windows 10 (all Editions) operating systems. Application within the terms of this contract is not achieved without the use of one of these operating systems.

O&O PartitionManager

Amendment to: 2. Requirements for application (system requirements)

O&O PartitionManager Professional Edition

The software requires Windows 7 (all Editions) operating systems. Usage within the terms of this contract is not achieved without the application of these operating systems.

O&O PartitionManager Server Edition

The software requires Windows Server 2008 (all Editions), Windows 7 (all Editions) or Windows Server 2008 R2 (all Editions) operating systems. Application within the terms of this contract is not achieved without the use of one of these operating systems.

O&O RegEditor

Important note for working with the Microsoft Windows Registry

Before making changes to the Microsoft Windows Registry (in the following Registry), you should prepare a backup copy of the Registry and ensure that you'll be able to restore the Registry if a problem should arise.

O&O formally declares that it is not responsible for damages arising from the improper use of O&O RegEdit. Changes to the Registry should only be made by experienced users who are aware of the consequences of such changes. A defective Registry can influence the entire stability of the system and lead to a crash of the computer or make it unable to start. This can further lead to loss of data.

Amendment to: 2. Requirements for application (system requirements)

The software requires Windows Server 2008 (all Editions), Windows 7 (all Editions), Windows Server 2008 R2 (all Editions), Windows 8 (all Editions), Windows Server 2012 (all Editions), Windows Server 2012 R2 (all Editions) or Windows 10 (all Editions) operating systems. Application within the terms of this contract is not achieved without the use of one of these operating systems.

Amendment to: 4. Payment

O&O demands no fee for the use of this license. In addition, a fee for this license and this program may not be demanded by any Third Parties, unless this is done with the expressed approval of O&O. When in doubt, please get in touch with us. You can find our contact data at the end of this license agreement.

O&O RescueBox

Amendment to: 2. Requirements for application (system requirements)

The software requires Windows Server 2008 (all Editions), Windows 7 (all Editions) or Windows Server 2008 R2 (all Editions), operating systems. Application within the terms of this contract is not achieved without the use of one of these operating systems.

The product at hand can only be used according to its acquired license. The following license types exist for O&O RescueBox:

O&O RescueBox Personal Edition

You are authorized to install and use the software product on only one computer. This should be used wholly in conjunction with all hardware in your possession, i.e. this license may not be used to provide a service to a third party. Other limitations may apply in the software itself. Please consult the software documentation for more information on these limitations.

O&O SafeErase

Amendment to: 2. Requirements for application (system requirements)

O&O SafeErase Professional Edition

The software requires Windows Vista (all Editions), Windows 7 (all Editions), Windows 8 (all Editions) or Windows 10 (all Editions) operating systems. Usage within the terms of this contract is not achieved without the application of these operating systems.

O&O SafeErase Workstation Edition

The software requires Windows Vista (all Editions), Windows 7 (all Editions), Windows 8 (all Editions) or Windows 10 (all Editions) operating systems. Usage within the terms of this contract is not achieved without the application of these operating systems.

O&O SafeErase Server Edition

The software requires Windows Vista (all Editions), Windows Server 2008 (all Editions), Windows 7 (all Editions), Windows Server 2008 R2 (all Editions), Windows 8 (all Editions), Windows Server 2012 (all Editions), Windows Server 2012 R2 (all Editions), Windows 10 (all Editions) or Windows Server 2016 (all Editions) operating systems. Application within the terms of this contract is not achieved without the use of one of these operating systems.

O&O SSD Migration Kit

Amendment to: 2. Requirements for application (system requirements)

The software requires Windows 7 (all Editions) or Windows 8 (all Editions) operating systems. Application within the terms of this contract is not achieved without the use of one of these operating systems.

Contact

If you have any questions concerning the O&O Software License Agreement or wish to speak with O&O, please get in touch with us.

O&O Software, Am Borsigturm 48, 13507 Berlin, Germany

Tel. +49 (0)30 991 91 62-00, Fax +49 (0)30 991 91 62-99

E-Mail: info@oo-software.com / sales@oo-software.com, Web: www.oo-software.com